

# LYNDEX NIKKEN

SHRINK FIT PRODUCT CATALOG



SHRINK FIT HOLDERS



<b>Table of Contents</b>	<b>1</b>
<b>About Lyndex-Nikken</b>	<b>2-3</b>
<b>Shrink Fit Introduction</b>	<b>4-5</b>
<b>CAT Tooling</b>	<b>6-7</b>
CAT40 Taper	6
CAT50 Taper	7
<b>HSK Tooling</b>	<b>8-12</b>
HSK63A Taper	8
HSK100A Taper	9
HSK80F Taper	10
HSK32E Taper	11
HSK40E Taper	11
HSK63F Taper	12
<b>BT Tooling</b>	<b>12-14</b>
BT30 Taper	12
BT40 Taper	13
BT50 Taper	14
<b>Straight Shank and Specials</b>	<b>15</b>
<b>Shrink Fit Machines</b>	<b>16</b>
<b>Accessories</b>	<b>17</b>

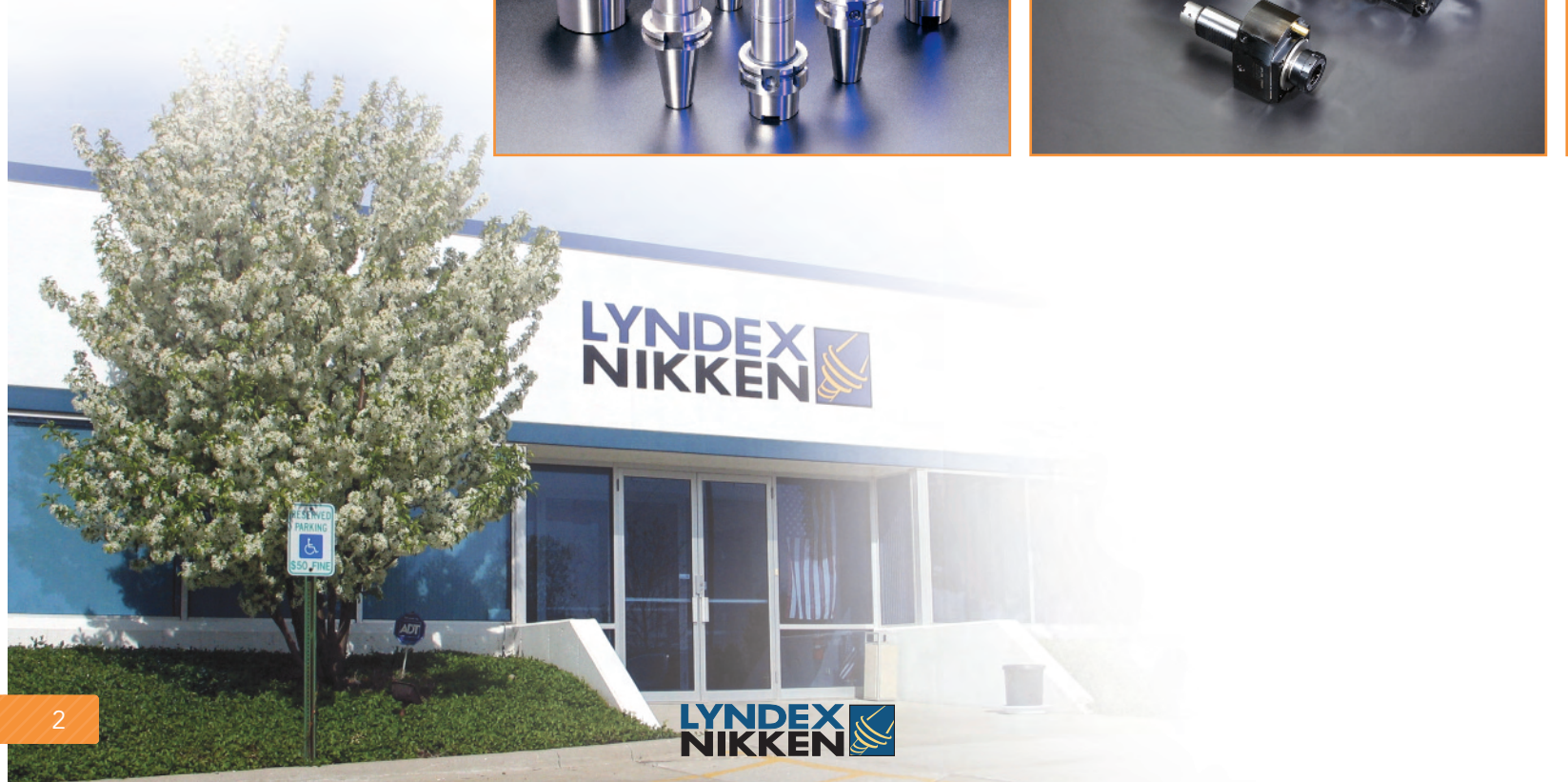


**SHRINKER**™ Shrinker is a registered trademark of Tooling Innovations, Dana Point, CA.

# QUALITY & TECHNOLOGY

North America's leading supplier of machine tool accessories, Lyndex-Nikken is a wholly-owned subsidiary of Nikken Kosakusho Works, LTD. - Japan. Backed by over a half century of experience, Lyndex-Nikken sets the standard for quality and technology with a complete line of superior toolholders and machine tool accessories.

From one source you can expect the best of both worlds: Extreme Quality and Advanced Technology



**LYNDEX  
NIKKEN**

**LYNDEX  
NIKKEN**

## High-Speed Toolholders

To eliminate any vibration from air turbulence, our high-speed toolholders have completely ground external surfaces (including the nut). Each of these holders is balanced on a high-performance balancing machine to suite the appropriate speed and G rating. Our high speed products are available in all tapers for Ultra-Lock™ Milling Chucks, SK Collets Chucks, Insider™ Chucks (MMC), and VC Holders.

## Rotary Tables

Our Complete line of Nikken CNC rotary tables are known worldwide for their wear-resistance, rigidity and high-speed rotation. Ion-nitrided worm wheels and carbide worm screws reduce friction and wear by up to 8 times (compared to common conventional construction). Our latest models feature reduced footprints and increased capabilities.

## Live Tools

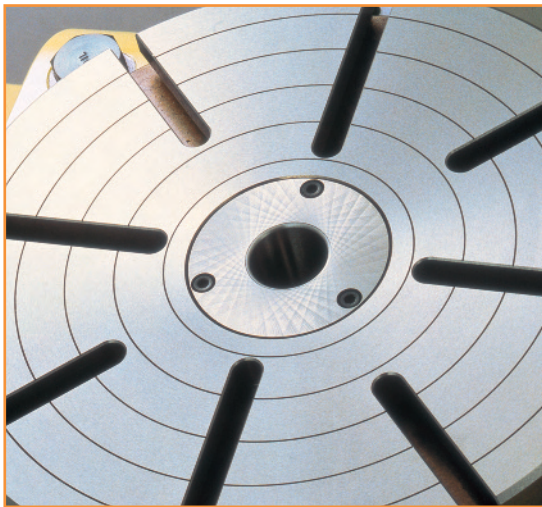
Our line of live tooling meets the industry's demand for superior technology, precision and selection. Choose from standard or custom designs in axial or radial configurations. Various shank tooling and collets available.

## Presetters

Presetters from Elbo Controlli reduce valuable tooling set up time. Our numerous models maximize accuracy and ease of operation, are solidly constructed, include an intuitive icon-driven control system and feature specially designed Panvision or Twinvision Camera Systems.

## Custom Tools

Upgrade your machine tool's capability with our production-driven Custom Tools. Our AngleHeads™ reduce the number of work setups in complex jobs by accessing previously unavailable planes. HiSpinners™ increase tooling RPM by up to 5 times. FluidHeads™ add coolant-thru capability.



## Customer Service

We pride ourselves on providing a high level of customer service—before, during and after the sale.

## Engineering

Our team of dedicated engineers provides expert process and product consultations.

## Repair Service

In the event that your Lyndex-Nikken product requires attention, we will quickly analyze, diagnose and correct any problem to get your equipment back up and running.

## Technical Support

Support for our entire line spans the U.S., Canada, Mexico and South America.

## Warehouse and Delivery

Lyndex-Nikken North American headquarters is centrally located near Chicago, Illinois. Our 50,000 sq. ft. facility warehouses an inventory of over 12,000 machine tool accessories stocked for fast delivery. Over 95% of orders are shipped the same day.





Shrinker is a registered trademark of Tooling Innovations, Dana Point, CA.

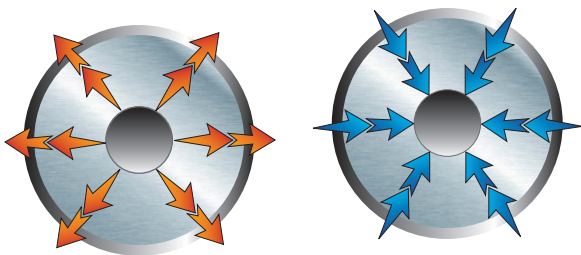
# Shrink



## Introducing the Industries Highest Quality Shrink Fit Line

- Completely redesigned to meet today's stringent requirements
- Manufactured to produce the highest gripping torque available
- Unparalleled accuracy
- Highest balance specifications, each tool is pre-balanced and balancable for speeds up to 40,000 RPM
- All tools feature our patented balancing system
- The broadest product line available. Metric and Inch sizes available in CAT40, CAT50, HSK32E, HSK40E, HSK63A, HSK80F, HSK100A, BT30, BT40, and BT50
- Wide variety of configurations available (short or long gage lengths) for difficult applications
- Our Shrink Fit system increases cutting tool life, chip removal rate, workpiece accuracy and spindle life. This means productivity can be dramatically increased, and production costs can be reduced significantly
- DIN 69882 - 8 June 2005

## Long Term Repeatability



Lyndex-Nikken's shrink fit system gives consistent and highly repeatable results. This repeatability correlates to extreme accuracy, rigidity and balance. Our uniform and superior gripping on the tool shank provides the best torque and force capability compared to other manufacturers.

## Patented Balancing Method

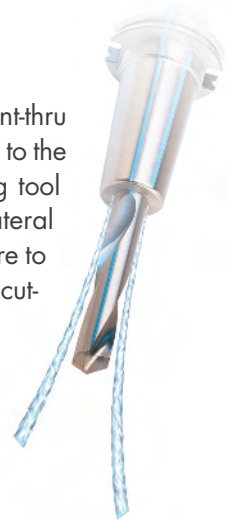
Lyndex's HSBalance toolholder employs a series of tapped holes surrounding the holder's centerline. Small set screws and weights are used to achieve balance. The holes are drilled parallel (not perpendicular) to the holder's centerline so the inserted set screws are not depth sensitive. A deeper setting will not affect the weight distribution. Parallel holes offer an additional advantage:



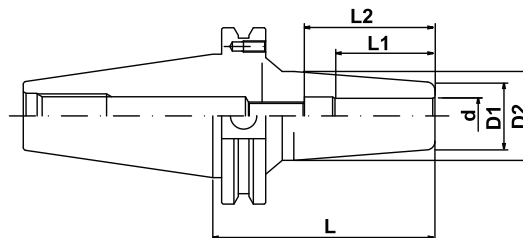
set screws cannot become unscrewed and back out during high-speed operations, so they need not be affixed semi-permanently.

## Coolant Options

Our tool holders offer different coolant-thru options which provide coolant directly to the cutting edge. This will extend cutting tool life and increase hole accuracy. Lateral coolant ports can be added to the bore to direct coolant down the flutes of the cutting tool and onto the cutting edge.



## CT40 Taper Shrink Fit Holders



Inch

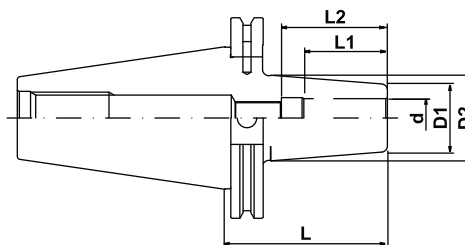
Part Number	Taper	d	L	L1	L2	D1	D2	B/U Screw
C40SF-0250-3.15P	CT40	1/4"	3.15"	0.87"	1.42"	0.83"	1.06"	M5
C40SF-0375-3.15P	CT40	3/8"	3.15"	1.22"	1.65"	0.94"	1.26"	M8
C40SF-0500-3.15P	CT40	1/2"	3.15"	1.42"	1.85"	0.94"	1.26"	M10
C40SF-0625-3.15P	CT40	5/8"	3.15"	1.54"	1.97"	1.06"	1.34"	M12
C40SF-0750-3.15P	CT40	3/4"	3.15"	1.61"	2.05"	1.30"	1.65"	M16
C40SF-1000-3.94P	CT40	1"	3.94"	1.85"	2.28"	1.73"	2.05"	M16
C40SF-1250-3.94P	CT40	1 1/4"	3.94"	2.01"	2.44"	1.73"	2.05"	M16
C40SF-0250-6.30P	CT40	1/4"	6.30"	0.87"	1.42"	0.83"	1.06"	M5
C40SF-0375-6.30P	CT40	3/8"	6.30"	1.22"	1.65"	0.94"	1.26"	M8
C40SF-0500-6.30P	CT40	1/2"	6.30"	1.42"	1.85"	0.94"	1.26"	M10
C40SF-0625-6.30P	CT40	5/8"	6.30"	1.54"	1.97"	1.06"	1.34"	M12
C40SF-0750-6.30P	CT40	3/4"	6.30"	1.61"	2.05"	1.30"	1.65"	M16
C40SF-1000-6.30P	CT40	1"	6.30"	1.85"	2.28"	1.73"	2.09"	M16
C40SF-1250-6.30P	CT40	1 1/4"	6.30"	2.01"	2.44"	1.73"	2.09"	M16

Metric

Part Number	Taper	d	L	L1	L2	D1	D2	B/U Screw
C40SF-6-80P	CT40	6mm	80mm (3.15")	0.87"	1.42"	0.83"	1.06"	M5
C40SF-8-80P	CT40	8mm	80mm (3.15")	1.02"	1.42"	0.83"	1.06"	M6
C40SF-10-80P	CT40	10mm	80mm (3.15")	1.22"	1.65"	0.94"	1.26"	M8
C40SF-12-80P	CT40	12mm	80mm (3.15")	1.42"	1.85"	0.94"	1.26"	M10
C40SF-16-80P	CT40	16mm	80mm (3.15")	1.54"	1.97"	1.06"	1.34"	M12
C40SF-20-80P	CT40	20mm	80mm (3.15")	1.61"	2.05"	1.30"	1.65"	M16
C40SF-25-100P	CT40	25mm	100mm (3.94")	1.85"	2.28"	1.73"	2.05"	M16
C40SF-32-100P	CT40	32mm	100mm (3.94")	2.01"	2.44"	1.73"	2.05"	M16
C40SF-6-160P	CT40	6mm	160mm (6.30")	0.87"	1.42"	0.83"	1.06"	M5
C40SF-8-160P	CT40	8mm	160mm (6.30")	1.02"	1.42"	0.83"	1.06"	M6
C40SF-10-160P	CT40	10mm	160mm (6.30")	1.22"	1.65"	0.94"	1.26"	M8
C40SF-12-160P	CT40	12mm	160mm (6.30")	1.42"	1.85"	0.94"	1.26"	M10
C40SF-16-160P	CT40	16mm	160mm (6.30")	1.54"	1.97"	1.06"	1.34"	M12
C40SF-20-160P	CT40	20mm	160mm (6.30")	1.61"	2.05"	1.30"	1.65"	M16
C40SF-25-160P	CT40	25mm	160mm (6.30")	1.85"	2.28"	1.73"	2.09"	M16
C40SF-32-160P	CT40	32mm	160mm (6.30")	2.01"	2.44"	1.73"	2.09"	M16

Note: Balancing screw for CT40 is M4

## CT50 Taper Shrink Fit Holders



Inch

Part Number	Taper	d	L	L1	L2	D1	D2	B/U Screw
C50SF-0250-3.15P	CT50	1/4"	3.15"	0.87"	1.42"	0.83"	1.06"	M5
C50SF-0375-3.15P	CT50	3/8"	3.15"	1.22"	1.65"	0.94"	1.26"	M8
C50SF-0500-3.15P	CT50	1/2"	3.15"	1.42"	1.85"	0.94"	1.26"	M10
C50SF-0625-3.15P	CT50	5/8"	3.15"	1.54"	1.97"	1.06"	1.34"	M12
C50SF-0750-3.15P	CT50	3/4"	3.15"	1.61"	2.05"	1.30"	1.65"	M16
C50SF-1000-3.94P	CT50	1"	3.94"	1.85"	2.28"	1.73"	2.09"	M16
C50SF-1250-3.94P	CT50	1 1/4"	3.94"	2.01"	2.44"	1.73"	2.09"	M16
C50SF-0250-6.30P	CT50	1/4"	6.30"	0.87"	1.42"	0.83"	1.06"	M5
C50SF-0375-6.30P	CT50	3/8"	6.30"	1.22"	1.65"	0.94"	1.26"	M8
C50SF-0500-6.30P	CT50	1/2"	6.30"	1.42"	1.85"	0.94"	1.26"	M10
C50SF-0625-6.30P	CT50	5/8"	6.30"	1.54"	1.97"	1.06"	1.34"	M12
C50SF-0750-6.30P	CT50	3/4"	6.30"	1.61"	2.05"	1.30"	1.65"	M16
C50SF-1000-6.30P	CT50	1"	6.30"	1.85"	2.28"	1.73"	2.09"	M16
C50SF-1250-6.30P	CT50	1 1/4"	6.30"	2.01"	2.44"	1.73"	2.09"	M16

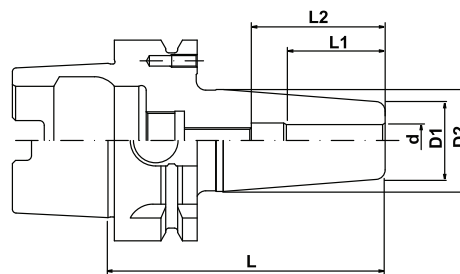
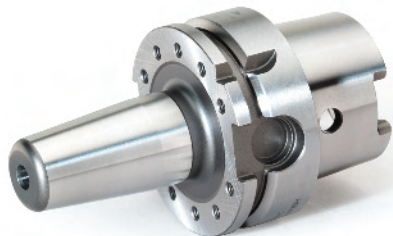
Metric

Part Number	Taper	d	L	L1	L2	D1	D2	B/U Screw
C50SF-6-80P	CT50	6mm	80mm (3.15")	0.87"	1.42"	0.83"	1.06"	M5
C50SF-8-80P	CT50	8mm	80mm (3.15")	1.02"	1.42"	0.83"	1.06"	M6
C50SF-10-80P	CT50	10mm	80mm (3.15")	1.22"	1.65"	0.94"	1.26"	M8
C50SF-12-80P	CT50	12mm	80mm (3.15")	1.42"	1.85"	0.94"	1.26"	M10
C50SF-16-80P	CT50	16mm	80mm (3.15")	1.54"	1.97"	1.06"	1.34"	M12
C50SF-20-80P	CT50	20mm	80mm (3.15")	1.61"	2.05"	1.30"	1.65"	M16
C50SF-25-100P	CT50	25mm	100mm (3.94")	1.85"	2.28"	1.73"	2.09"	M16
C50SF-32-100P	CT50	32mm	100mm (3.94")	2.01"	2.44"	1.73"	2.09"	M16
C50SF-10-160P	CT50	10mm	160mm (6.30")	1.22"	1.65"	0.94"	1.26"	M8
C50SF-12-160P	CT50	12mm	160mm (6.30")	1.42"	1.85"	0.94"	1.26"	M10
C50SF-16-160P	CT50	16mm	160mm (6.30")	1.54"	1.97"	1.06"	1.34"	M12
C50SF-20-160P	CT50	20mm	160mm (6.30")	1.61"	2.05"	1.30"	1.65"	M16
C50SF-25-160P	CT50	25mm	160mm (6.30")	1.85"	2.28"	1.73"	2.09"	M16
C50SF-32-160P	CT50	32mm	160mm (6.30")	2.01"	2.44"	1.73"	2.09"	M16

Note: Balancing screw for CT50 is M4



## HSK63A Taper Shrink Fit Holders



Inch

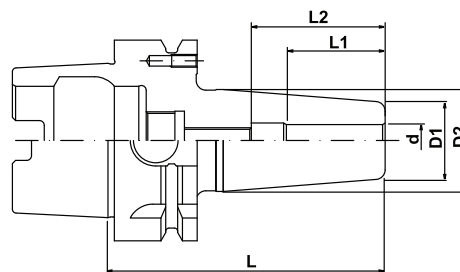
Part Number	Taper	d	L	L1	L2	D1	D2	B/U Screw
HSK63A-SF0250-3.15P	HSK63A	1/4"	3.15"	0.87"	1.42"	0.83"	1.06"	M5
HSK63A-SF0375-3.35P	HSK63A	3/8"	3.35"	1.22"	1.65"	0.94"	1.26"	M8
HSK63A-SF0500-3.54P	HSK63A	1/2"	3.54"	1.42"	1.85"	0.94"	1.26"	M10
HSK63A-SF0625-3.74P	HSK63A	5/8"	3.74"	1.54"	1.97"	1.06"	1.34"	M12
HSK63A-SF0750-3.94P	HSK63A	3/4"	3.94"	1.61"	2.05"	1.30"	1.65"	M16
HSK63A-SF1000-4.53P	HSK63A	1"	4.53"	1.85"	2.28"	1.73"	2.09"	M16
HSK63A-SF0250-6.30P	HSK63A	1/4"	6.30"	0.87"	1.42"	0.83"	1.06"	M5
HSK63A-SF0375-6.30P	HSK63A	3/8"	6.30"	1.22"	1.65"	0.94"	1.26"	M8
HSK63A-SF0500-6.30P	HSK63A	1/2"	6.30"	1.42"	1.85"	0.94"	1.26"	M10
HSK63A-SF0625-6.30P	HSK63A	5/8"	6.30"	1.54"	1.97"	1.06"	1.34"	M12
HSK63A-SF0750-6.30P	HSK63A	3/4"	6.30"	1.61"	2.05"	1.30"	1.65"	M16
HSK63A-SF1000-6.30P	HSK63A	1"	6.30"	1.85"	2.28"	1.73"	2.09"	M16

Metric

Part Number	Taper	d	L	L1	L2	D1	D2	B/U Screw
HSK63A-SF6-80P	HSK63A	6mm	80mm (3.15")	0.87"	1.42"	0.83"	1.06"	M5
HSK63A-SF8-80P	HSK63A	8mm	80mm (3.15")	1.02"	1.42"	0.83"	1.06"	M6
HSK63A-SF10-85P	HSK63A	10mm	85mm (3.35")	1.22"	1.65"	0.94"	1.26"	M8
HSK63A-SF12-90P	HSK63A	12mm	90mm (3.54")	1.42"	1.85"	0.94"	1.26"	M10
HSK63A-SF16-95P	HSK63A	16mm	95mm (3.74")	1.54"	1.97"	1.06"	1.34"	M12
HSK63A-SF20-100P	HSK63A	20mm	100mm (3.94")	1.61"	2.05"	1.30"	1.65"	M16
HSK63A-SF25-115P	HSK63A	25mm	115mm (4.53")	1.85"	2.28"	1.73"	2.09"	M16
HSK63A-SF32-120P	HSK63A	32mm	120mm (4.72")	2.01"	2.44"	1.73"	2.09"	M16
HSK63A-SF6-160P	HSK63A	6mm	160mm (6.30")	0.87"	1.42"	0.83"	1.06"	M5
HSK63A-SF8-160P	HSK63A	8mm	160mm (6.30")	1.02"	1.42"	0.83"	1.06"	M6
HSK63A-SF10-160P	HSK63A	10mm	160mm (6.30")	1.22"	1.65"	0.94"	1.26"	M8
HSK63A-SF12-160P	HSK63A	12mm	160mm (6.30")	1.42"	1.85"	0.94"	1.26"	M10
HSK63A-SF16-160P	HSK63A	16mm	160mm (6.30")	1.54"	1.97"	1.06"	1.34"	M12
HSK63A-SF20-160P	HSK63A	20mm	160mm (6.30")	1.61"	2.05"	1.30"	1.65"	M16
HSK63A-SF25-160P	HSK63A	25mm	160mm (6.30")	1.85"	2.28"	1.73"	2.09"	M16

Note: Balancing screw for HSK63A is M4

## HSK100A Taper Shrink Fit Holders



Inch

Part Number	Taper	d	L	L1	L2	D1	D2	B/U Screw
HSK100A-SF0375-3.54P	HSK100A	3/8"	3.54"	1.22"	1.65"	0.94"	1.26"	M8
HSK100A-SF0500-3.74P	HSK100A	1/2"	3.74"	1.42"	1.85"	0.94"	1.26"	M10
HSK100A-SF0625-3.94P	HSK100A	5/8"	3.94"	1.54"	1.97"	1.06"	1.34"	M12
HSK100A-SF0750-4.13P	HSK100A	3/4"	4.13"	1.61"	2.05"	1.30"	1.65"	M16
HSK100A-SF1000-4.53P	HSK100A	1"	4.53"	1.85"	2.28"	1.73"	2.09"	M16
HSK100A-SF1250-4.72P	HSK100A	1 1/4"	4.72"	2.01"	2.44"	1.73"	2.09"	M16
HSK100A-SF0375-6.30P	HSK100A	3/8"	6.30"	1.22"	1.65"	0.94"	1.26"	M8
HSK100A-SF0500-6.30P	HSK100A	1/2"	6.30"	1.42"	1.85"	0.94"	1.26"	M10
HSK100A-SF0625-6.30P	HSK100A	5/8"	6.30"	1.54"	1.97"	1.06"	1.34"	M12
HSK100A-SF0750-6.30P	HSK100A	3/4"	6.30"	1.61"	2.05"	1.30"	1.65"	M16
HSK100A-SF1000-6.30P	HSK100A	1"	6.30"	1.85"	2.28"	1.73"	2.09"	M16
HSK100A-SF1250-6.30P	HSK100A	1 1/4"	6.30"	2.01"	2.44"	1.73"	2.09"	M16

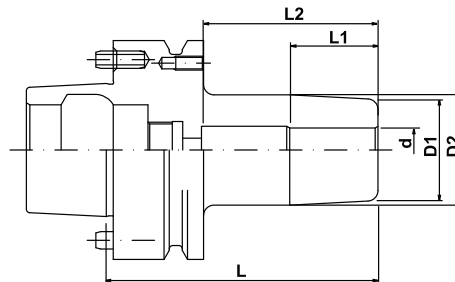
Metric

Part Number	Taper	d	L	L1	L2	D1	D2	B/U Screw
HSK100A-SF6-85P	HSK100A	6mm	85mm (3.35")	0.87"	1.42"	0.83"	1.06"	M5
HSK100A-SF8-85P	HSK100A	8mm	85mm (3.35")	1.02"	1.42"	0.83"	1.06"	M6
HSK100A-SF10-90P	HSK100A	10mm	90mm (3.54")	1.22"	1.65"	0.94"	1.26"	M8
HSK100A-SF12-95P	HSK100A	12mm	95mm (3.74")	1.42"	1.85"	0.94"	1.26"	M10
HSK100A-SF16-100P	HSK100A	16mm	100mm (3.94")	1.54"	1.97"	1.06"	1.34"	M12
HSK100A-SF20-105P	HSK100A	20mm	105mm (4.13")	1.61"	2.05"	1.30"	1.65"	M16
HSK100A-SF25-115P	HSK100A	25mm	115mm (4.53")	1.85"	2.28"	1.73"	2.09"	M16
HSK100A-SF32-120P	HSK100A	32mm	120mm (4.72")	2.01"	2.44"	1.73"	2.09"	M16
HSK100A-SF6-160P	HSK100A	6mm	160mm (6.30")	0.87"	1.42"	0.83"	1.06"	M5
HSK100A-SF8-160P	HSK100A	8mm	160mm (6.30")	1.02"	1.42"	0.83"	1.06"	M6
HSK100A-SF10-160P	HSK100A	10mm	160mm (6.30")	1.22"	1.65"	0.94"	1.26"	M8
HSK100A-SF12-160P	HSK100A	12mm	160mm (6.30")	1.42"	1.85"	0.94"	1.26"	M10
HSK100A-SF16-160P	HSK100A	16mm	160mm (6.30")	1.54"	1.97"	1.06"	1.34"	M12
HSK100A-SF20-160P	HSK100A	20mm	160mm (6.30")	1.61"	2.05"	1.30"	1.65"	M16
HSK100A-SF25-160P	HSK100A	25mm	160mm (6.30")	1.85"	2.28"	1.73"	2.09"	M16
HSK100A-SF32-160P	HSK100A	32mm	160mm (6.30")	2.01"	2.44"	1.73"	2.09"	M16

Note: Balancing screw for HSK100A is M4



## HSK80F Taper Shrink Fit Holders



Inch

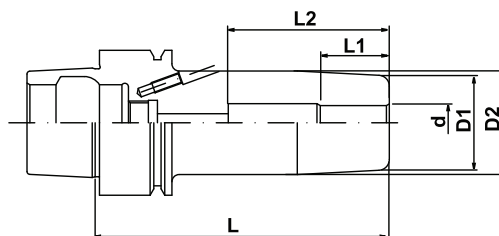
Part Number	Taper	d	L	L1	L2	D1	D2	B/U Screw
HSK80F-SF0250-3.00P	HSK80F	1/4"	3.00"	0.87"	1.42"	0.83"	1.06"	M5
HSK80F-SF0375-3.00P	HSK80F	3/8"	3.00"	1.22"	1.65"	0.94"	1.18"	M8
HSK80F-SF0500-3.00P	HSK80F	1/2"	3.00"	1.42"	1.85"	0.94"	1.18"	M8
HSK80F-SF0625-3.00P	HSK80F	5/8"	3.00"	1.54"	1.97"	1.06"	1.30"	M8
HSK80F-SF0750-3.50P	HSK80F	3/4"	3.50"	1.61"	2.05"	1.30"	1.61"	M8
HSK80F-SF1000-4.00P	HSK80F	1"	4.00"	1.85"	2.28"	1.73"	2.09"	M8
HSK80F-SF0250-6.00P	HSK80F	1/4"	6.00"	0.87"	1.42"	0.83"	1.06"	M5
HSK80F-SF0375-6.00P	HSK80F	3/8"	6.00"	1.22"	1.65"	0.94"	1.26"	M8
HSK80F-SF0500-6.00P	HSK80F	1/2"	6.00"	1.42"	1.85"	0.94"	1.26"	M10
HSK80F-SF0625-6.00P	HSK80F	5/8"	6.00"	1.54"	1.97"	1.06"	1.34"	M12
HSK80F-SF0750-6.00P	HSK80F	3/4"	6.00"	1.61"	2.05"	1.30"	1.65"	M16
HSK80F-SF1000-6.00P	HSK80F	1"	6.00"	1.85"	2.28"	1.73"	2.09"	M16

Custom Sizes

Part Number	Taper	d	L	L1	L2	D1	D2	B/U Screw
HSK80F-SF0250-2.36P	HSK80F	1/4"	2.36"	0.87"	-	0.83"	0.98"	-
HSK80F-SF0375-2.56P	HSK80F	3/8"	2.56"	1.22"	1.57"	0.94"	1.14"	-
HSK80F-SF0500-2.95P	HSK80F	1/2"	2.95"	1.42"	1.85"	0.94"	1.18"	-
HSK80F-SF0625-3.15P	HSK80F	5/8"	3.15"	1.54"	1.97"	1.06"	1.34"	-
HSK80F-SF0750-3.15P	HSK80F	3/4"	3.15"	1.61"	2.05"	1.30"	1.57"	-
HSK80F-SF1000-2.75P	HSK80F	1"	2.75"	1.26"	1.69"	1.73"	1.97"	-

Note: Balancing screw for HSK80F is M4

## HSK32E Taper Shrink Fit Holders



Metric

Part Number	Taper	d	L	L1	L2	D1	D2	B/U Screw
HSK32E-SF3-60P	HSK32E	3mm	60mm (2.36")	0.35"	-	0.39"	-	-
HSK32E-SF4-60P	HSK32E	4mm	60mm (2.36")	0.47"	-	0.39"	-	-
HSK32E-SF6-100P	HSK32E	6mm	100mm (3.94")	0.87"	1.42"	0.83"	1.02"	M5
HSK32E-SF8-100P	HSK32E	8mm	100mm (3.94")	1.02"	1.42"	0.83"	1.02"	M6
HSK32E-SF10-80P	HSK32E	10mm	80mm (3.15")	1.22"	1.65"	0.94"	1.14"	M8

Note: Balancing screw for HSK32E is M3

## HSK40E Taper Shrink Fit Holders

Inch

Part Number	Taper	d	L	L1	L2	D1	D2	B/U Screw
HSK40E-SF0125-2.36P	HSK40E	1/8"	2.36"	0.35"	-	0.39"	-	-
HSK40E-SF0187-2.36P	HSK40E	3/16"	2.36"	0.47"	-	0.39"	-	-
HSK40E-SF0250-3.15P	HSK40E	1/4"	3.15"	0.87"	1.42"	0.83"	1.06"	M5
HSK40E-SF0375-3.15P	HSK40E	3/8"	3.15"	1.22"	1.65"	0.94"	1.22"	M8
HSK40E-SF0500-3.54P	HSK40E	1/2"	3.54"	1.42"	1.85"	0.94"	1.26"	M10
HSK40E-SF0625-3.54P	HSK40E	5/8"	3.54"	1.54"	1.97"	1.06"	1.34"	M12
HSK40E-SF0250-5.12P	HSK40E	1/4"	5.12"	0.87"	1.42"	0.83"	1.06"	M5
HSK40E-SF0375-5.12P	HSK40E	3/8"	5.12"	1.22"	1.65"	0.94"	1.26"	M8
HSK40E-SF0500-5.12P	HSK40E	1/2"	5.12"	1.42"	1.85"	0.94"	1.26"	M10
HSK40E-SF0625-5.12P	HSK40E	5/8"	5.12"	1.54"	1.97"	1.06"	1.34"	M12

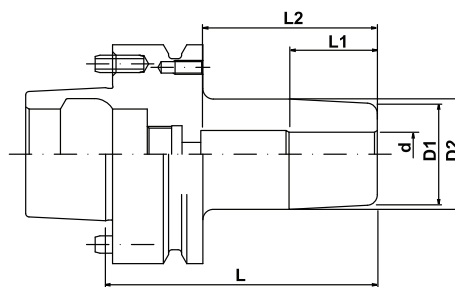
Metric

Part Number	Taper	d	L	L1	L2	D1	D2	B/U Screw
HSK40E-SF3-60P	HSK40E	3mm	60mm (2.36")	0.35"	-	0.39"	-	-
HSK40E-SF4-60P	HSK40E	4mm	60mm (2.36")	0.47"	-	0.39"	-	-
HSK40E-SF6-80P	HSK40E	6mm	80mm (3.15")	0.87"	1.42"	0.83"	1.06"	M5
HSK40E-SF8-80P	HSK40E	8mm	80mm (3.15")	1.02"	1.42"	0.83"	1.06"	M6
HSK40E-SF10-80P	HSK40E	10mm	80mm (3.15")	1.22"	1.65"	0.94"	1.26"	M8
HSK40E-SF12-90P	HSK40E	12mm	90mm (3.54")	1.42"	1.85"	0.94"	1.26"	M10
HSK40E-SF16-90P	HSK40E	16mm	90mm (3.54")	1.54"	1.97"	1.06"	1.34"	M12
HSK40E-SF6-130P	HSK40E	6mm	130mm (5.12")	0.87"	1.42"	0.83"	1.06"	M5
HSK40E-SF8-130P	HSK40E	8mm	130mm (5.12")	1.02"	1.42"	0.83"	1.06"	M6
HSK40E-SF10-130P	HSK40E	10mm	130mm (5.12")	1.22"	1.65"	0.94"	1.22"	M8
HSK40E-SF12-130P	HSK40E	12mm	130mm (5.12")	1.42"	1.85"	0.94"	1.26"	M10
HSK40E-SF16-130P	HSK40E	16mm	130mm (5.12")	1.54"	1.97"	1.06"	1.34"	M12

Note: Balancing screw for HSK40E is M3



## HSK63F Taper Shrink Fit Holders

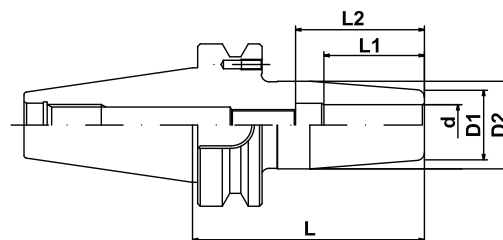


Inch

Part Number	Taper	d	L	L1	L2	D1	D2	B/U Screw
HSK63F-SF0250-3.00P	HSK63F	1/4"	3.00"	0.87"	1.42"	0.83"	1.06"	M5
HSK63F-SF0375-3.00P	HSK63F	3/8"	3.00"	1.22"	1.65"	0.94"	1.18"	-
HSK63F-SF0500-3.00P	HSK63F	1/2"	3.00"	1.42"	1.85"	0.94"	1.18"	-
HSK63F-SF0625-3.00P	HSK63F	5/8"	3.00"	1.54"	1.97"	1.06"	1.30"	-
HSK63F-SF0750-3.00P	HSK63F	3/4"	3.00"	1.61"	2.05"	1.30"	1.61"	-
HSK63F-SF1000-3.00P	HSK63F	1"	3.00"	1.85"	2.28"	1.73"	2.01"	M16P1
HSK63F-SF0250-6.00P	HSK63F	1/4"	6.00"	0.87"	1.42"	0.83"	1.06"	M5
HSK63F-SF0375-6.00P	HSK63F	3/8"	6.00"	1.22"	1.65"	0.94"	1.26"	M8P1
HSK63F-SF0500-6.00P	HSK63F	1/2"	6.00"	1.42"	1.85"	0.94"	1.26"	M10P1
HSK63F-SF0625-6.00P	HSK63F	5/8"	6.00"	1.54"	1.97"	1.06"	1.34"	M12P1
HSK63F-SF0750-6.00P	HSK63F	3/4"	6.00"	1.61"	2.05"	1.30"	1.65"	-
HSK63F-SF1000-6.00P	HSK63F	1"	6.00"	1.85"	2.28"	1.73"	2.09"	M16P1

Note: Balancing screw for HSK63F is M3

## BT30 Taper Shrink Fit Holders

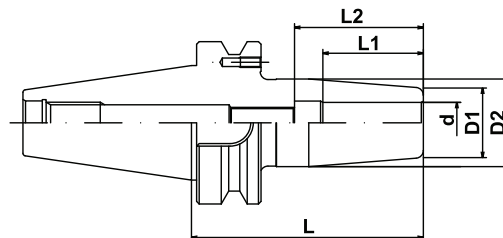


Inch

Part Number	Taper	d	L	L1	L2	D1	D2	B/U Screw
B30SF-0125-3.15P	BT30	1/8"	3.15"	0.35"	-	0.39"	0.71"	-
B30SF-0250-3.15P	BT30	1/4"	3.15"	0.87"	1.42"	0.83"	1.06"	M5
B30SF-0375-3.15P	BT30	3/8"	3.15"	1.22"	1.65"	0.94"	1.22"	M8
B30SF-0500-3.15P	BT30	1/2"	3.15"	1.42"	1.85"	0.94"	1.22"	M10
B30SF-0625-3.15P	BT30	5/8"	3.15"	1.54"	1.97"	1.06"	1.34"	M12
B30SF-0750-3.15P	BT30	3/4"	3.15"	1.61"	2.05"	1.30"	1.54"	M16

Note: Balancing screw for BT30 is M3

## BT40 Taper Shrink Fit Holders



Inch

Part Number	Taper	d	L	L1	L2	D1	D2	B/U Screw
B40SF-0250-3.54P	BT40	1/4"	3.54"	0.87"	1.42"	0.83"	1.06"	M5
B40SF-0375-3.54P	BT40	3/8"	3.54"	1.22"	1.65"	0.94"	1.26"	M8
B40SF-0500-3.54P	BT40	1/2"	3.54"	1.42"	1.85"	0.94"	1.26"	M10
B40SF-0625-3.54P	BT40	5/8"	3.54"	1.54"	1.97"	1.06"	1.34"	M12
B40SF-0750-3.54P	BT40	3/4"	3.54"	1.61"	2.05"	1.30"	1.61"	M16
B40SF-1000-3.94P	BT40	1"	3.94"	1.85"	2.28"	1.73"	2.05"	M16
B40SF-1250-3.94P	BT40	1 1/4"	3.94"	2.01"	2.44"	1.73"	2.05"	M16
B40SF-0250-6.30P	BT40	1/4"	6.30"	0.87"	1.42"	0.83"	1.06"	M5
B40SF-0375-6.30P	BT40	3/8"	6.30"	1.22"	1.65"	0.94"	1.26"	M8
B40SF-0500-6.30P	BT40	1/2"	6.30"	1.42"	1.85"	0.94"	1.26"	M10
B40SF-0625-6.30P	BT40	5/8"	6.30"	1.54"	1.97"	1.06"	1.34"	M12
B40SF-0750-6.30P	BT40	3/4"	6.30"	1.61"	2.05"	1.30"	1.61"	M16
B40SF-1000-6.30P	BT40	1"	6.30"	1.85"	2.28"	1.73"	2.09"	M16
B40SF-1250-6.30P	BT40	1 1/4"	6.30"	2.01"	2.44"	1.73"	2.09"	M16

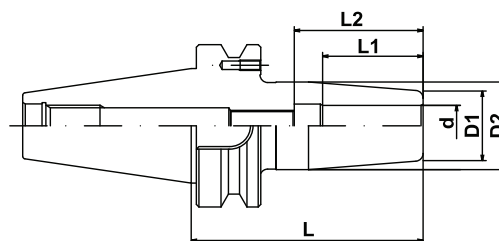
Metric

Part Number	Taper	d	L	L1	L2	D1	D2	B/U Screw
B40SF-6-90P	BT40	6mm	90mm (3.54")	0.87"	1.42"	0.83"	1.06"	M5
B40SF-8-90P	BT40	8mm	90mm (3.54")	1.02"	1.42"	0.83"	1.06"	M6
B40SF-10-90P	BT40	10mm	90mm (3.54")	1.22"	1.65"	0.94"	1.26"	M8
B40SF-12-90P	BT40	12mm	90mm (3.54")	1.42"	1.85"	0.94"	1.26"	M10
B40SF-16-90P	BT40	16mm	90mm (3.54")	1.54"	1.97"	1.06"	1.34"	M12
B40SF-20-90P	BT40	20mm	90mm (3.54")	1.61"	2.05"	1.30"	1.61"	M16
B40SF-25-100P	BT40	25mm	100mm (3.94")	1.85"	2.28"	1.73"	2.05"	M16
B40SF-32-100P	BT40	32mm	100mm (3.94")	2.01"	2.44"	1.73"	2.05"	M16
B40SF-6-160P	BT40	6mm	160mm (6.30")	0.87"	1.42"	0.83"	1.06"	M5
B40SF-8-160P	BT40	8mm	160mm (6.30")	1.02"	1.42"	0.83"	1.06"	M6
B40SF-10-160P	BT40	10mm	160mm (6.30")	1.22"	1.65"	0.94"	1.26"	M8
B40SF-12-160P	BT40	12mm	160mm (6.30")	1.42"	1.85"	0.94"	1.26"	M10
B40SF-16-160P	BT40	16mm	160mm (6.30")	1.54"	1.97"	1.06"	1.34"	M12
B40SF-20-160P	BT40	20mm	160mm (6.30")	1.61"	2.05"	1.30"	1.61"	M16
B40SF-25-160P	BT40	25mm	160mm (6.30")	1.85"	2.28"	1.73"	2.09"	M16
B40SF-32-160P	BT40	32mm	160mm (6.30")	2.01"	2.44"	1.73"	2.09"	M16

Note: Balancing screw for BT40 is M4



## BT50 Taper Shrink Fit Holders



Inch

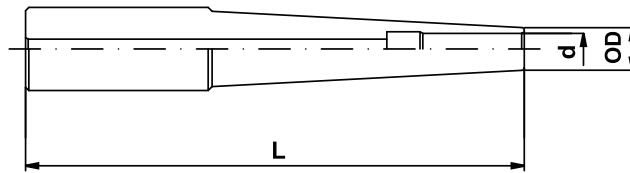
Part Number	Taper	d	L	L1	L2	D1	D2	B/U Screw
B50SF-0250-3.94P	BT50	1/4"	3.94"	0.87"	1.42"	0.83"	1.06"	M5
B50SF-0375-3.94P	BT50	3/8"	3.94"	1.22"	1.65"	0.94"	1.26"	M8
B50SF-0500-3.94P	BT50	1/2"	3.94"	1.42"	1.85"	0.94"	1.26"	M10
B50SF-0625-3.94P	BT50	5/8"	3.94"	1.54"	1.97"	1.06"	1.34"	M12
B50SF-0750-3.94P	BT50	3/4"	3.94"	1.61"	2.05"	1.30"	1.61"	M16
B50SF-1000-3.94P	BT50	1"	3.94"	1.85"	2.28"	1.73"	2.05"	M16
B50SF-1250-3.94P	BT50	1 1/4"	3.94"	2.01"	2.44"	1.73"	2.05"	M16
B50SF-0250-6.30P	BT50	1/4"	6.30"	0.87"	1.42"	0.83"	1.06"	M5
B50SF-0375-6.30P	BT50	3/8"	6.30"	1.22"	1.65"	0.94"	1.26"	M8
B50SF-0500-6.30P	BT50	1/2"	6.30"	1.42"	1.85"	0.94"	1.26"	M10
B50SF-0625-6.30P	BT50	5/8"	6.30"	1.54"	1.97"	1.06"	1.34"	M12
B50SF-0750-6.30P	BT50	3/4"	6.30"	1.61"	2.05"	1.30"	1.65"	M16
B50SF-1000-6.30P	BT50	1"	6.30"	1.85"	2.28"	1.73"	2.09"	M16
B50SF-1250-6.30P	BT50	1 1/4"	6.30"	2.01"	2.44"	1.73"	2.09"	M16

Metric

Part Number	Taper	d	L	L1	L2	D1	D2	B/U Screw
B50SF-6-100P	BT50	6mm	100mm (3.94")	0.87"	1.42"	0.83"	1.06"	M5
B50SF-8-100P	BT50	8mm	100mm (3.94")	1.02"	1.42"	0.83"	1.06"	M6
B50SF-10-100P	BT50	10mm	100mm (3.94")	1.22"	1.65"	0.94"	1.26"	M8
B50SF-12-100P	BT50	12mm	100mm (3.94")	1.42"	1.85"	0.94"	1.26"	M10
B50SF-16-100P	BT50	16mm	100mm (3.94")	1.54"	1.97"	1.06"	1.34"	M12
B50SF-20-100P	BT50	20mm	100mm (3.94")	1.61"	2.05"	1.30"	1.61"	M16
B50SF-25-100P	BT50	25mm	100mm (3.94")	1.85"	2.28"	1.73"	2.05"	M16
B50SF-32-100P	BT50	32mm	100mm (3.94")	2.01"	2.44"	1.73"	2.05"	M16
B50SF-6-160P	BT50	6mm	160mm (6.30")	0.87"	1.42"	0.83"	1.06"	M5
B50SF-8-160P	BT50	8mm	160mm (6.30")	1.02"	1.42"	0.83"	1.06"	M6
B50SF-10-160P	BT50	10mm	160mm (6.30")	1.22"	1.65"	0.94"	1.26"	M8
B50SF-12-160P	BT50	12mm	160mm (6.30")	1.42"	1.85"	0.94"	1.26"	M10
B50SF-16-160P	BT50	16mm	160mm (6.30")	1.54"	1.97"	1.06"	1.34"	M12
B50SF-20-160P	BT50	20mm	160mm (6.30")	1.61"	2.05"	1.30"	1.65"	M16
B50SF-25-160P	BT50	25mm	160mm (6.30")	1.85"	2.28"	1.73"	2.09"	M16
B50SF-32-160P	BT50	32mm	160mm (6.30")	2.01"	2.44"	1.73"	2.09"	M16

Note: Balancing screw for BT50 is M4

## Straight Shank Shrink Fit



3; Slim Style (Light duty)

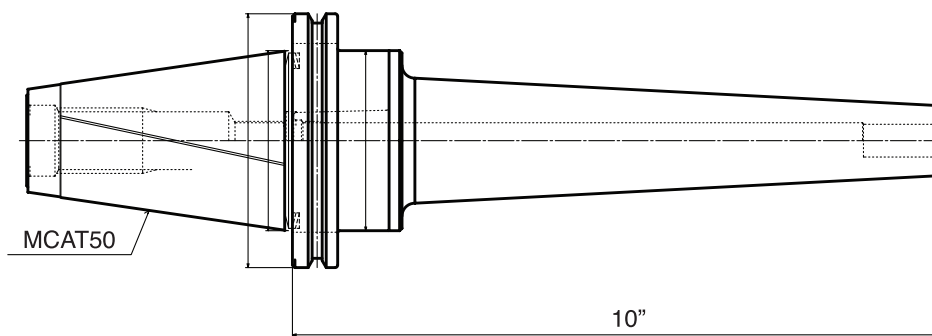
Part Number	OD	d	L
S62SF-0187-4.00-3	5/8"	3/16"	4"
S62SF-0250-4.00-3	5/8"	1/4"	4"
S62SF-4-4.00-3	5/8"	4mm	4"
S62SF-5-4.00-3	5/8"	5mm	4"
S62SF-6-4.00-3	5/8"	6mm	4"
S75SF-0250-6.00-3	3/4"	1/4"	6"
S75SF-0375-6.00-3	3/4"	3/8"	6"
S75SF-6-6.00-3	3/4"	6mm	6"
S75SF-8-6.00-3	3/4"	8mm	6"
S10SF-0375-6.00-3	1"	3/8"	6"
S10SF-0500-6.00-3	1"	1/2"	6"
S10SF-10-6.00-3	1"	10mm	6"
S10SF-12-6.00-3	1"	12mm	6"

4.5; Standard

Part Number	OD	d	L
S75SF-0250-6.00	3/4"	1/4"	6"
S75SF-0375-6.00	3/4"	3/8"	6"
S75SF-6-6.00	3/4"	6mm	6"
S75SF-8-6.00	3/4"	8mm	6"
S75SF-10-6.00	3/4"	10mm	6"
S10SF-0375-6.00	1"	3/8"	6"
S10SF-0500-6.00	1"	1/2"	6"
S10SF-10-6.00	1"	10mm	6"
S10SF-12-6.00	1"	12mm	6"

## Special Lengths & Sizes

Special lengths and sizes are available.



Offering four different high quality shrink fit machines, both liquid and air cooled, Lyndex-Nikken has the solution to fit both your budget and tooling needs.

Make sure to contact your Lyndex-Nikken representative for more information on a solution that is right for you (800-543-6237).

### **ThermoGrip™ ISG 2200 Air Cooled**

- Clamping range: 6–20 mm
- Suitable shanks: carbide tools
- Operation: manual
- Tool setting: measuring adaptor
- Coil: integrated
- Max. tool length: 290 mm
- 1 Cooling Station
- Electric current: 3 x 208

### **ThermoGrip™ ISG 2200WK Liquid Cooled**

- Processor controlled 8 KW high frequency generator
- Shrinking range  $\varnothing$  3 – 20 mm solid carbide and  $\varnothing$  6 – 20 mm HSS
- Maximum shrinking time of all Shrink Fit holders is 5 seconds
- Cooling length for HSK-63 max. 239 mm
- Cooling of all Shrink Fit holders without separate cooling adaptors possible
- No danger of burning by touching the heated holders
- No damage to the tool cutting edge by the cooling adaptors
- For use with all standard tool spindles by means of a simple change of the tool holder
- Optimal protection between coil and tool shank by means of 3 interchangeable discs with quick changing
- Fully automatic shrinking and cooling process, fast tool change time of 30 seconds
- Cooling time can be set between 1 and 99 seconds

### **ThermoGrip™ ISG 3200 Air Cooled**

- Clamping range: 3–6 mm (1/8–1/4 carbide)
- Clamping range: 6–32 mm (1/4–1-1/4 carbide+HSS)
- Clamping range: 32–50 mm (1-1/4–2 - optional) carbide+HSS
- Operation: automatic
- Tool setting: measuring adaptor
- Coil: exchangeable
- Max. tool length: 450 mm (17.719) (from gauge line)
- 4 Cooling Stations
- Air pressure: 87 PSI



### **ThermoGrip™ ISG 3200WK Liquid Cooled**

- Processor controlled 10 KW high frequency generator
- Shrinking range  $\varnothing$  3 – 32 mm solid carbide and  $\varnothing$  6 – 32 mm HSS with only 1 coil
- Second coil for shrinking range till  $\varnothing$  50 mm
- Max. shrinking length 450 mm (can be increased optionally by extending the guide unit)
- Max. cooling length 400 mm
- Cooling of all shrinking chucks without separate cooling adaptors possible
- For all standard tool spindles by means of a simple change of the tool holder
- Fully automatic shrinking and cooling process, fast tool change times of less than 30 seconds
- No overheating of the shrinking chucks while using programmed parameters
- Manual shrinking cycle for free adjustment of generator power and heating time
- Easy control by graphic display with dialog function
- Adjustable delay time for every shrinking cycle

Note: Heating time may vary depending on the machine and the tool used.



## Setting Pots For Liquid Cooled



ISG 2200WK

SK/BT/CAT Taper

Setting Pot	Part Number
SK30/BT30/CAT30	T2-WWK/SK30
SK40/BT40/CAT40	T2-WWK/SK40
SK50/BT50/CAT50	T2-WWK/SK50

HSK Taper

Setting Pot	Part Number
HSK-32	T2-WWK/HSK32
HSK-40	T2-WWK/HSK40
HSK-50	T2-WWK/HSK50
HSK-63	T2-WWK/HSK63
HSK-80	T2-WWK/HSK80
HSK-100	T2-WWK/HSK100

ISG 3200WK

SK/BT/CAT Taper

Setting Pot	Part Number
SK30/BT30/CAT30	T3-WWK/SK30
SK40/BT40/CAT40	T3-WWK/SK40
SK50/BT50/CAT50	T3-WWK/SK50

HSK Taper

Setting Pot	Part Number
HSK-32	T3-WWK/HSK32
HSK-40	T3-WWK/HSK40
HSK-50	T3-WWK/HSK50
HSK-63	T3-WWK/HSK63
HSK-80	T3-WWK/HSK80
HSK-100	T3-WWK/HSK100

## Setting Pots for Air Cooled



ISG 2200 AND ISG 3200

SK/BT/CAT Taper

Setting Pot	Part Number
SK30/BT30/CAT30	T3-W/SK30
SK40/BT40/CAT40	T3-W/SK40
SK50/BT50/CAT50	T3-W/SK50

HSK Taper

Setting Pot	Part Number
HSK-32	T3-W/HSK32
HSK-40	T3-W/HSK40
HSK-50	T3-W/HSK50
HSK-63	T3-W/HSK63
HSK-80	T3-W/HSK80
HSK-100	T3-W/HSK100

## Cooling Adaptors

Different sizes available depending on the tool length.

Cooling Adaptor Diameter(mm)	Tool Length(mm)
from Ø2 to Ø50	up to 120
from Ø3 to Ø40	up to 200

Ask your Lyndex-Nikken representative for more information(800-543-6237)

## Balancing Kits

BAL-KIT(M3)-200-SET

Balancing Kit for BT30, HSK40, HSK32E

BAL-KIT(M4)-200-SET

Balancing Kit for BT40, BT50, CAT40, CAT50, HSK63, HSK100, HSK80F