

2019 NEW TOOLING

# SHRINKFIT TOOL HOLDING SOLUTIONS



## EXPANDED SHRINKFIT LINE

Enhanced development of coolant-ported and heavy duty holders for extreme machining.

# ShrinkFit Holders

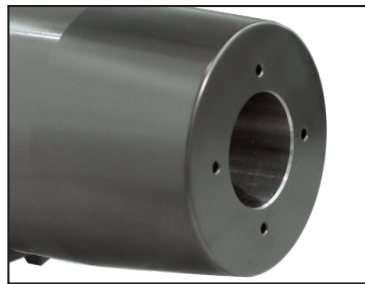
## 1 Extreme Precision Shrinkfit Tools

# SHRINKFIT TOOLS DEVELOPED SPECIFICALLY FOR THE MOST DEMANDING APPLICATIONS IN THE HEAVY MACHINERY AND AEROSPACE INDUSTRIES.



### HSK100A HEAVY DUTY SHRINKFIT (THICK-WALL)

Our NEW heavy duty shrinkfit holders deliver the required rigidity and clamping force for heavy chip loads and high metal removal rates.



Heavy duty shrinkfit with high pressure coolant ports.

- Coolant supplied directly to the cutting zone drastically improves tool life and chip evacuation.
- Extreme concentricity, 3 Microns.
- Balanced up to 25,000 rpm.
- Available stock in BT, CAT and HSK.

### WIDER SELECTION OF COOLANT-PORTED SHRINKFIT HOLDERS.



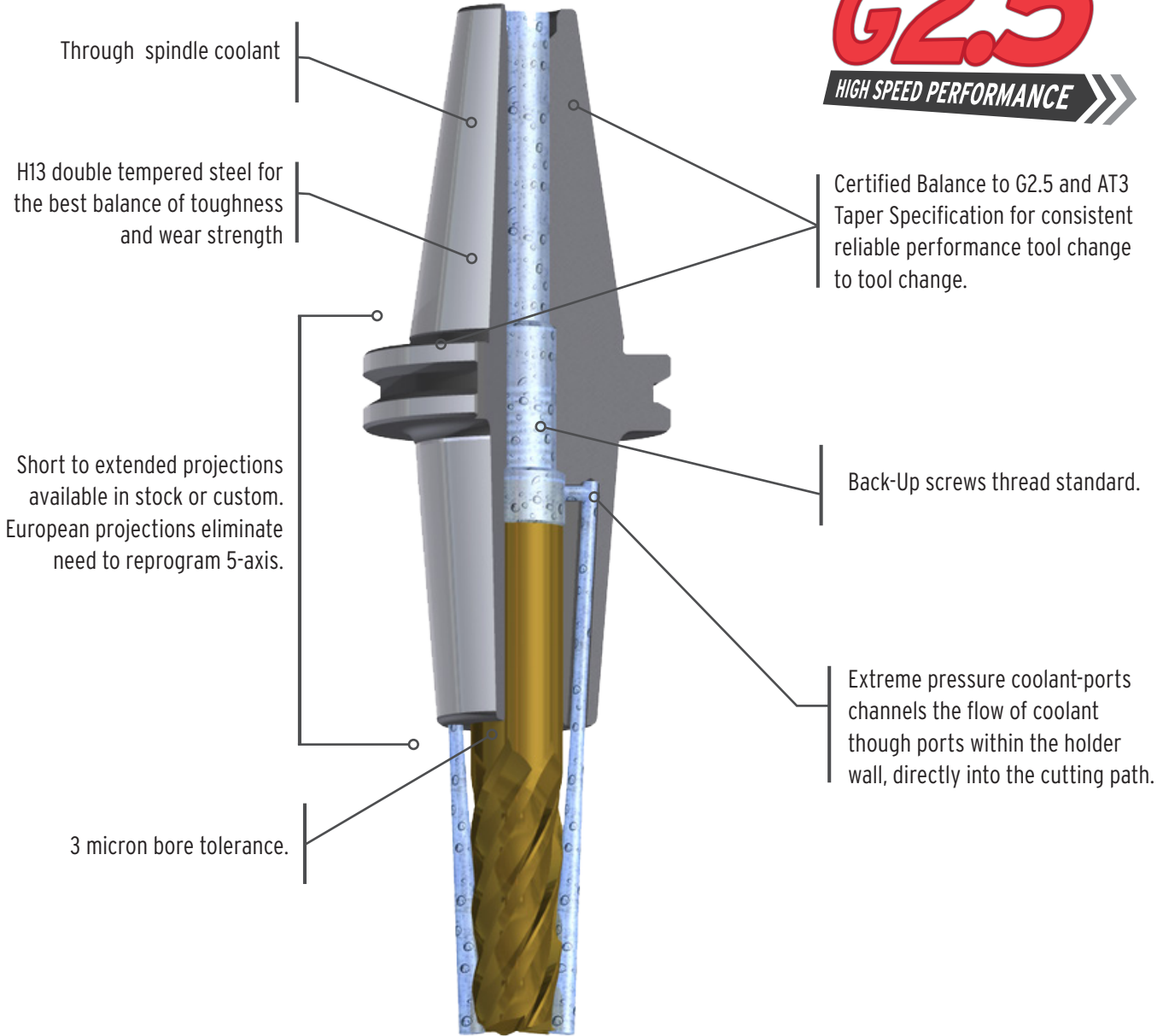
### UPGRADE TO SHRINK-LOCKED



**SHRINK-LOCKED**  
WITH FORMULA **TTG 594™**

Shrink-Locked Toolholders eliminate cutting tool pull-out, providing more than **6X** the friction drive force compared to untreated tool holders.

## PARLEC SHRINKFIT SYSTEM FEATURES



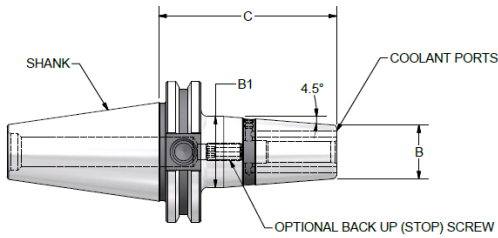
**Not in a catalog? No problem.  
We can make it! *FAST!***

Turbo Turn specials use the latest CNC technology to create engineered solutions that go beyond standard tool holding for all types of unique jobs.

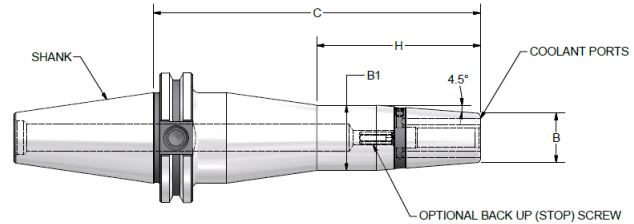
- Optimized for your application.
- Dedicated "Turbo Turn" CNC cells.
- Ultra fast quoting & production.
- Short lead times.
- Competitive pricing.

# ShrinkFit Holders

## 3 Extreme Precision Shrinkfit Tools



Style 1



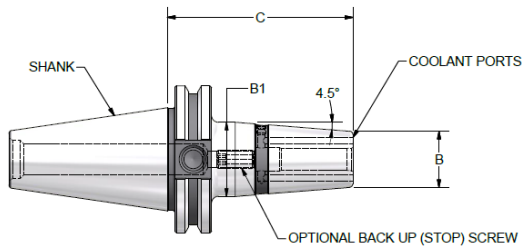
Style 2

## CAT 40

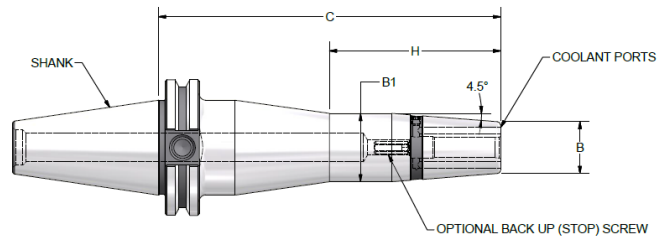
SIZE	ITEM NUMBER	C	B	B1	H	THREAD	Style
1/8"	C40A-01SF315-9	3.15"	.39"	.62"	3.15"	-	3*
3/16"	C40A-18SF315-9	3.15"		.72"		-	3*
1/4"	C40A-25SF315-9C	3.15"	.83"	1.06"	3.15"	M5X.8	1
	C40A-25SF512-9C	5.12"					1
	C40A-25SF630-9C	6.30"					2
5/16"	C40A-31SF315-9C	3.15"	.94"	1.26"	3.15"	M6X1	1
3/8"	C40A-38SF315-9C	3.15"				M8X1	1
	C40A-38SF512-9C	5.12"					1
	C40A-38SF630-9C	6.30"	2				
1/2"	C40A-50SF315-9C	3.15"	1.06"	1.34"	3.15"	M10X1	1
	C40A-50SF512-9C	5.12"					1
	C40A-50SF630-9C	6.30"					2
5/8"	C40A-62SF315-9C	3.15"	1.30"	1.65"	3.15"	M12X1	1
	C40A-62SF512-9C	5.12"					1
	C40A-62SF630-9C	6.30"					2
3/4"	C40A-75SF315-9C	3.15"	1.73"	2.09"	3.15"	M16X1	1
	C40A-75SF512-9C	5.12"					1
	C40A-75SF630-9C	6.30"					2
1"	C40A-10SF394-9C	3.94"	1.73"	2.09"	3.15"	M16X1	1
	C40A-10SF512-9C	5.12"					1
	C40A-10SF630-9C	6.30"					2
1 1/4"	C40A-12SF394-9C	3.94"					1

\*Style 3:  
No Coolant Ports

For additional sizes and tapers without coolant ports, please refer to Parlec's Full Line Master Tooling Catalog or visit Parlec.com.



Style 1



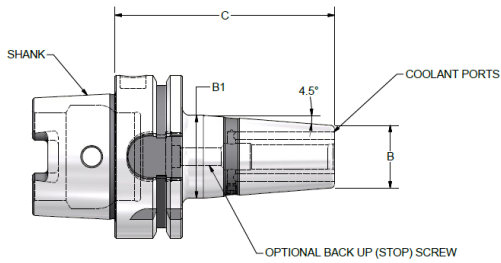
Style 2

## CAT 50

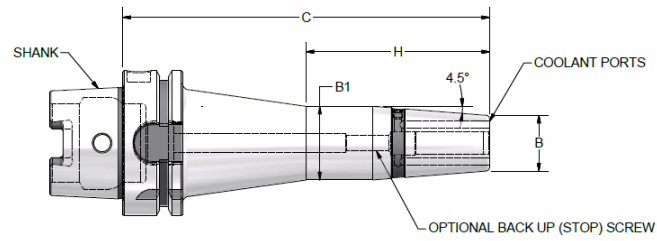
SIZE	ITEM NUMBER	C	B	B1	H	THREAD	Style
1/4"	C50A-25SF315-9C	3.15"	.83"	1.06"	3.15"	M5X.8	1
	C50A-25SF512-9C	5.12"					1
	C50A-25SF630-9C	6.30"					2
5/16"	C50A-31SF315-9C	3.15"	.94"	1.26"	3.15"	M6X1	1
	C50A-31SF512-9C	5.12"					1
	C50A-31SF630-9C	6.30"					2
3/8"	C50A-38SF315-9C	3.15"	.94"	1.26"	3.15"	M8X1	1
	C50A-38SF512-9C	5.12"					1
	C50A-38SF630-9C	6.30"					2
1/2"	C50A-50SF315-9C	3.15"	.94"	1.26"	3.15"	M10X1	1
	C50A-50SF512-9C	5.12"					1
	C50A-50SF630-9C	6.30"					2
5/8"	C50A-62SF315-9C	3.15"	1.06"	1.34"	3.15"	M12X1	1
	C50A-62SF512-9C	5.12"					1
	C50A-62SF630-9C	6.30"					2
3/4"	C50A-75SF315-9C	3.15"	1.30"	1.65"	3.15"	M16X1	1
	C50A-75SF512-9C	5.12"					1
	C50A-75SF630-9C	6.30"					2
1"	C50A-10SF394-9C	3.94"	1.73"	2.09"	3.15"	M16X1	1
	C50A-10SF512-9C	5.12"					1
	C50A-10SF630-9C	6.30"					2
1 1/4"	C50A-12SF394-9C	3.94"	1.73"	2.09"	3.15"	M16X1	1
	C50A-12SF512-9C	5.12"					1
	C50A-12SF630-9C	6.30"					2

# ShrinkFit Holders

## 5 Extreme Precision Shrinkfit Tools



Style 1



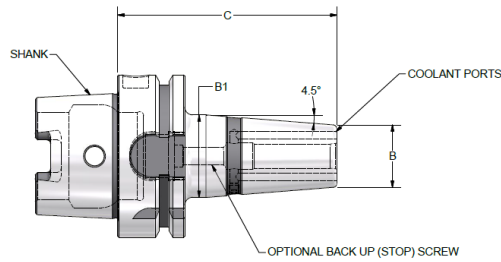
Style 2

## HSK 63A - INCH

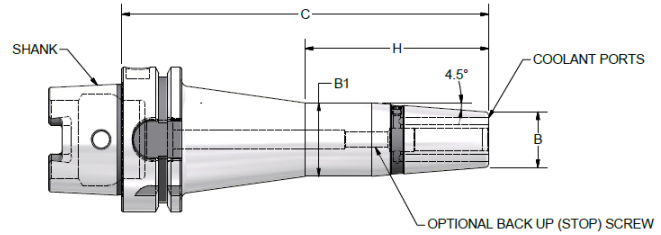
SIZE	ITEM NUMBER	C	B	B1	H	THREAD	Style
1/8"	H63A-01SF315-9	3.15"	.39"	.62"	3.15"	-	3*
3/16"	H63A-18SF315-9	3.15"		.72"		-	3*
1/4"	H63A-25SF315-9C	3.15"	.83"	1.06"	3.15"	M5X.8	1
	H63A-25SF512-9C	5.12"					1
	H63A-25SF630-9C	6.30"					2
5/16"	H63A-31SF315-9C	3.15"	.94"	1.26"	3.15"	M6X1	1
	H63A-31SF512-9C	5.12"					1
	H63A-31SF630-9C	6.30"					1
3/8"	H63A-38SF335-9C	3.35"	1.06"	1.34"	3.15"	M8X1	1
	H63A-38SF512-9C	5.12"					1
	H63A-38SF630-9C	6.30"					2
1/2"	H63A-50SF354-9C	3.54"	1.30"	1.65"	3.15"	M10X1	1
	H63A-50SF512-9C	5.12"					1
	H63A-50SF630-9C	6.30"					2
5/8"	H63A-62SF374-9C	3.74"	1.73"	2.09"	3.15"	M12X1	1
	H63A-62SF512-9C	5.12"					1
	H63A-62SF630-9C	6.30"					2
3/4"	H63A-75SF394-9C	3.94"	1.30"	1.65"	3.15"	M16X1	1
	H63A-75SF512-9C	5.12"					1
	H63A-75SF630-9C	6.30"					2
1"	H63A-10SF453-9C	4.53"	1.73"	2.09"	3.15"	M16X1	1
	H63A-10SF630-9C	5.12"					1
1 1/4"	H63A-12SF472-9C	4.72"	1.73"	2.09"	3.15"	M16X1	1
	H63A-12SF630-9C	6.30"					1

\*Style 3:  
No Coolant Ports

For additional sizes and tapers without coolant ports, please refer to Parlec's Full Line Master Tooling Catalog or visit Parlec.com.



Style 1



Style 2

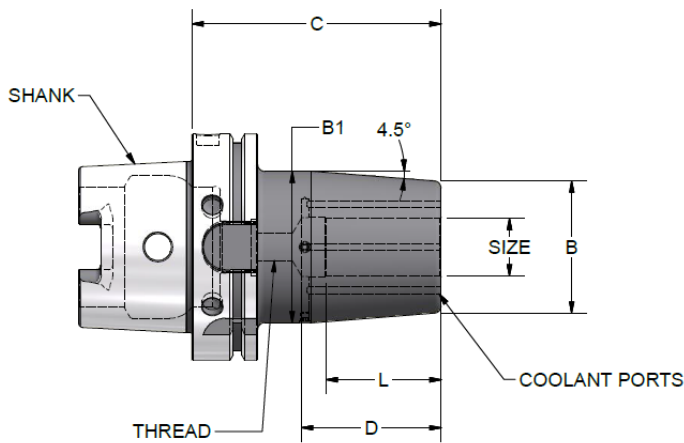
## HSK 63A - METRIC

SIZE	ITEM NUMBER	C	B	B1	H	THREAD	Style			
4 MM	H63A-M04SF80-9	3.15"	.39"	-		-	3*			
6 MM	H63A-M06SF80-9C	3.15"	.83"	1.06"	3.15"	M5X.8	1			
	H63A-M06SF130-9C	5.12"					1			
	H63A-M06SF160-9C	6.30"					2			
8 MM	H63A-M08SF80-9C	3.15"				M6X1	1			
	H63A-M08SF130-9C	5.12"					1			
	H63A-M08SF160-9C	6.30"					2			
10 MM	H63A-M10SF85-9C	3.35"	.94"	1.26"	3.15"	M8X1	1			
	H63A-M10SF130-9C	5.12"					1			
	H63A-M10SF160-9C	6.30"					2			
12 MM	H63A-M12SF90-9C	3.54"				M10X1	1			
	H63A-M12SF130-9C	5.12"					1			
	H63A-M12SF160-9C	6.30"					2			
16 MM	H63A-M16SF95-9C	3.74"	1.06"	1.34"	3.15"	M12X1	1			
	H63A-M16SF130-9C	5.12"					1			
	H63A-M16SF160-9C	6.30"					2			
20 MM	H63A-M20SF100-9C	3.94"				1.30"	1.65"	3.15"	M16X1	1
	H63A-M20SF130-9C	5.12"								1
	H63A-M20SF160-9C	6.30"								2
25 MM	H63A-M25SF115-9C	4.53"	1.73"	2.09"	3.15"	M16X1	1			
	H63A-M25SF130-9C	5.12"					1			
32 MM	H63A-M32SF120-9C	4.72"				1				
	H63A-M32SF160-9C	6.30"						1		

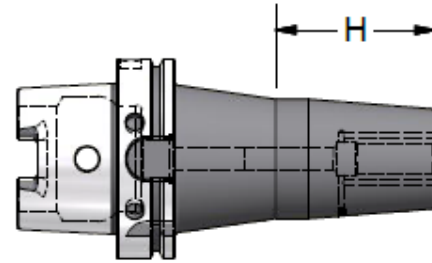
\*Style 3:  
No Coolant Ports

# ShrinkFit Holders

## 7 Extreme Precision Shrinkfit Tools



Style 1



Style 2

## HSK 100A HEAVY DUTY

SIZE	ITEM NUMBER	C	B	B1	L	D	H	THREAD	PORTS	STYLE
3/8"	H100A-38SHD512-9C	5.12"	1.50"	1.78"	1.20"	1.65"	3.07"	M8X1	2	2
	H100A-38SHD630-9C	6.30"	1.50"	1.78"	1.20"	1.65"	3.07"	M8X1	2	2
1/2"	H100A-50SHD374-9C	3.74"	1.06"	1.34"	1.46"	1.85"	-	M10X1	2	1
	H100A-50SHD630-9C	6.30"	1.50"	1.78"	1.46"	1.85"	3.54"	M8X1	2	2
	H100A-50SHD787-9C	7.87"	1.06"	1.34"	1.46"	1.85"	3.54"	M10X1	2	2
5/8"	H100A-62SHD394-9C	3.94"	1.97"	2.36"	1.54"	1.97"	-	M12X1	2	1
	H100A-62SHD630-9C	6.30"	1.97"	2.36"	1.54"	1.97"	3.15"	M12X1	2	2
3/4"	H100A-75SHD394-9C	3.94"	2.28"	2.64"	1.61"	2.05"	-	M16X1	2 OR 4	1
	H100A-75SHD413-9C	4.13"	2.28"	2.64"	1.61"	2.05"	-	M16X1	2 OR 4	1
	H100A-75SHD512-9C	5.12"	2.28"	2.64"	1.64"	2.05"	-	M16X1	2 OR 4	1
	H100A-75SHD630-9C	6.30"	2.28"	2.64"	1.64"	2.05"	-	M16X1	2 OR 4	1
	H100A-75SHD787-9C	7.87"	2.28"	2.64"	1.64"	2.05"	-	M16X1	2 OR 4	1
1"	H100A-10SHD433-9C	4.33"	2.28"	2.64"	2.00"	2.44"	-	-	4	1
	H100A-10SHD472-9C	4.72"	2.48"	2.84"	2.01"	2.44"	-	M16X1	4	1
	H100A-10SHD630-9C	6.30"	2.48"	2.84"	2.01"	2.44"	-	M16X1	4	1
	H100A-10SHD787-9C	7.87"	2.28"	2.64"	2.01"	2.44"	-	M16X1	4	1
1 1/4"	H100A-12SHD433-9C	4.33"	2.76"	3.07"	2.50"	3.07"	-	NONE	4	1
	H100A-12SHD472-9C	4.72"	2.76"	3.07"	2.50"	3.07"	-	NONE	4	1
	H100A-12SHD512-9C	5.12"	2.76"	3.07"	2.50"	3.07"	-	NONE	4	1
	H100A-12SHD630-9C	6.30"	2.76"	3.07"	2.50"	3.07"	-	M16X1	4	1
	H100A-12SHD787-9C	7.87"	2.76"	3.07"	2.50"	3.07"	-	M16X1	4	1

For additional sizes and tapers without coolant ports, please refer to Parlec's Full Line Master Tooling Catalog or visit [Parlec.com](http://Parlec.com).