



# SX Modular Shrink

## 2 Piece Shrink Fit System

### The Best Modular Shrink Fit System w/ SX Collet Chuck

- ⇒ Z Length Adjustable, increase reach when needed
- ⇒ Slim Nose Shrink Extensions for 5 Axis Work
- ⇒ Sealed for High Pressure Coolant
- ⇒ Jet-Blast optional for around solid tools air or coolant
- ⇒ Projections of base holders from 1.75" - 5.91"
- ⇒ Extensions from 4" - 11.8"
- ⇒ Extensions manufactured from ISO 40CrMoV5 (H13)
- ⇒ Cost Effective Solution, no special connection

### What do you need?

- ⇒ Pick your Base Holder
- ⇒ Pick your Collet
- ⇒ Pick your Shrink Extension
- ⇒ Pick your Accessories
- ⇒ A controlled heat source to heat and cool the extension for tool change



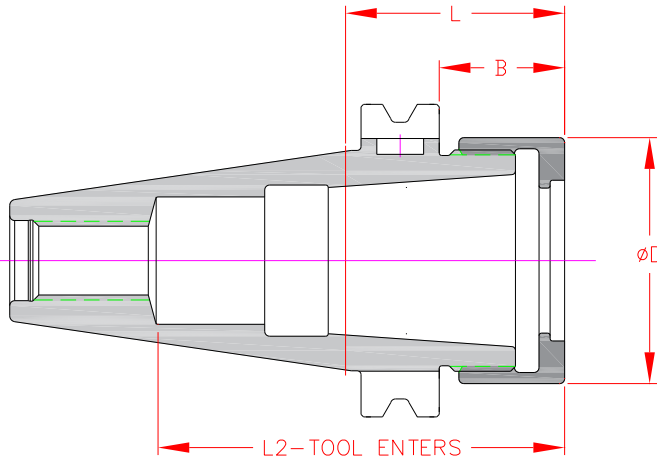
**AHB** Tooling & Machinery, Inc.  
Complete Metalworking Solutions  
Roseville Saginaw & Jackson, MI

ISO Certified  
(800) 991-4225  
www.ahbinc.com  
customerservice@ahbinc.com



## SX25M Collet Chuck

- 3µm (0.0001) TIR Taper to Taper
- Pre-Balanced G2.5 @ 25,000 RPM or ≤1 grmm
- Coolant Thru, DIN-B Coolant Available (see chart)
- 1" Capacity Collet Chuck
- Nut OD 1.97"
- Locking Torque @ 85 ft/lbs Maximum (120 ft/lbs Max. with SXN25MB Bearing Nut)
- Order Collets, Wrench & Collet Remover Tool Separately



Part Number	Spindle	Flange Coolant	B"	D"	L"	L2" - Tool Enters	Collet	Nut	Standard Wrench	Torque Wrench Head	Collet Remover
DCAT40-SX25M-0175-D**	Dual Contact		1.00		1.75	3.25					
CAT40-SX25M-0175-D**		Included	1.00		1.75	3.25					
CAT40-SX25M-0250-D			1.75		2.50	2.18					
CAT40-SX25M-0354			2.79		3.54	3.20					
CAT40-SX25M-0472			3.97		4.72	3.68					
CAT40-SX25M-0591	Standard		5.15		5.91	3.68					
CAT50-SX25M-0413		Optional Add -D	2.56		4.13	3.87					
CAT50-SX25M-0531			3.74		5.31	3.87					
CAT50-SX25M-0650			4.92	1.97	6.50	3.80	SX25	SXN-25M	50-55 HOOK	TWSQ050-S55	SXR25
CAT50-SX25M-0800			6.10		8.00	3.87					
BT30-SX25M-070	-	-	-		2.76	2.42					
BT40-SX25M-090	Standard	Optional Add -D	2.40		3.54	3.16					
BT40-SX25M-120			2.40		4.72	3.16					
HSK63A-SX25M-090			2.52		3.54	2.44					
HSK63A-SX25M-135	HSK - A	-	4.29		5.31	2.89					
HSK100A-SX25M-095			2.60		3.74	2.44					

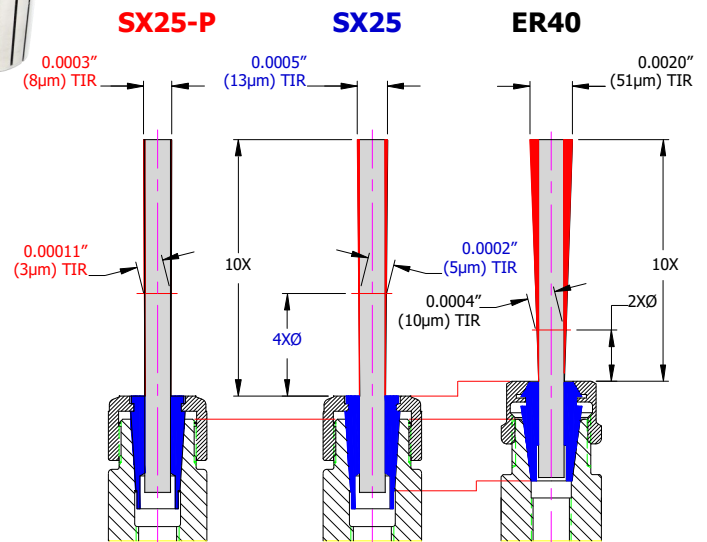
\*\* Nut Diameter is larger than ANSI B5.50 Safety Area, may not function in some Heavy Duty or Umbrella Style Tool Changers

## SX25 Collets

- Collets Ground & Inspected @ 5µm (0.0002) TIR @ 4D
- -P Collets Hand Inspected 3X @ 3µm (0.0001) TIR @ 4D
- SSX Collets Sealed for up to 2,000 PSI
- Square shoulder design, reduces nut effect on TIR
- 8° Taper for Superior Driving Torque & Surface Engagement
- Order Collet Remover Tool Separately



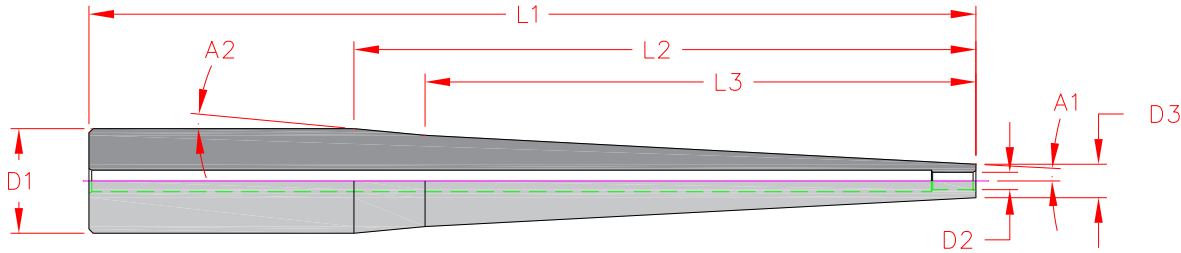
Extension OD	5µm @ 4D Precision	3µm @ 4D Ultimate Precision	Hi Pressure Sealed
0.3750"	SX25-0375	SX25-0375-P	SSX25-0375
0.5000"	SX25-0500	SX25-0500-P	SSX25-0500
0.7500"	SX25-0750	SX25-0750-P	SSX25-0750
1.0000"	SX25-1000	SX25-1000-P	SSX25-1000
12mm	SX25-M120	SX25-M120-P	SSX25-M120
16mm	SX25-M160	SX25-M160-P	SSX25-M160
20mm	SX25-M200	SX25-M200-P	SSX25-M200
25mm	SX25-M250	SX25-M250-P	SSX25-M250





## Inch SN & SD Shrink Extensions

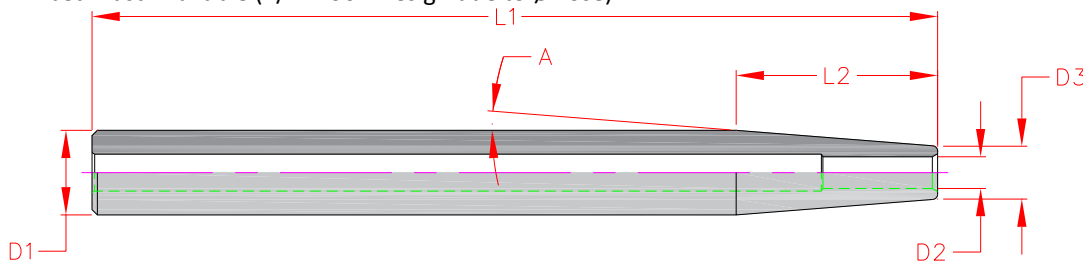
- 3µm (0.0001) TIR OD to ID
- OD ISO-h6 Tolerance
- Manufactured from ISO-40CrMoV5 Tool Steel (H13)
- Jet-Blast Available (1/2 Moon Design due to ØNose)



Part Number	D1"	D2"	D3"	L1"	L2"	L3"	A1	A2
S037-SN012-0315	0.375	0.1250	0.24	3.15	1.40	-	2.8	-
S037-SN018-0315	0.375	0.1875	0.31	3.15	1.40	-	1.5	-
S050-SN025-0315	0.500	0.2500	0.37	3.15	1.40	-	2.8	-
S075-SN012-0800	0.750	0.1250	0.24	8.00	4.46	3.95	3.0	5.4
S075-SN018-0800	0.750	0.1875	0.31	8.00	4.46	-	2.9	-
S075-SN025-0800	0.750	0.2500	0.37	8.00	4.46	-	2.5	-
S100-SN037-0800	1.000	0.3750	0.49	8.00	4.33	3.82	3.0	6.0
S100-SN050-0800	1.000	0.5000	0.62	8.00	4.33	3.82	2.0	6.0
S100-SD025-0800	1.000	0.2500	0.49	8.00	2.17	1.65	3.0	18.0
S100-SD031-0800	1.000	0.3125	0.55	8.00	2.17	1.65	3.0	15.0
S100-SD037-0800	1.000	0.3750	0.61	8.00	2.17	1.65	3.0	12.0
S100-SD050-0800	1.000	0.5000	0.81	8.00	1.71	1.43	2.5	6.5

## Metric SD Shrink Extensions

- 3µm (0.0001) TIR OD to ID
- OD ISO-h6 Tolerance
- Manufactured from ISO-40CrMoV5 Tool Steel (H13)
- Jet-Blast Available (1/2 Moon Design due to ØNose)



Part Number	D1 mm	D2 mm	D3 mm	L1 mm	L2 mm	A Angle
S12-SD03-160	12	3	8	160	25.41	4.5
S12-SD04-160	12	4	8	160	25.41	4.5
S16-SD03-160	16	3	10	160	38.12	4.5
S16-SD04-160	16	4	10	160	38.12	4.5
S16-SD05-160	16	5	10	160	38.12	4.5
S16-SD06-160	16	6	10	160	38.12	4.5
S20-SD06-160	20	6	14	160	38.12	4.5
S20-SD06-300	20	6	14	300	38.12	4.5
S20-SD08-160	20	8	14	160	38.12	4.5
S20-SD08-300	20	8	14	300	38.12	4.5
S25-SD10-160	25	10	20	160	31.77	4.5
S25-SD10-300	25	10	20	300	31.77	4.5
S25-SD12-160	25	12	20	160	31.77	4.5
S25-SD12-300	25	12	20	300	31.77	4.5
S25-SD14-160	25	14	20	160	31.77	4.5
S25-SD16-160	25	16	22	160	19.06	4.5
S25-SD16-300	25	16	22	300	19.06	4.5



# SX25 Accessories

## SX25 Collet Remover Tool

- Works with all SX25 & SSX25 Collets

Part Number
COLLET REMOVER SXR25



### Instructions

Set the small end of the collet remover on the taper



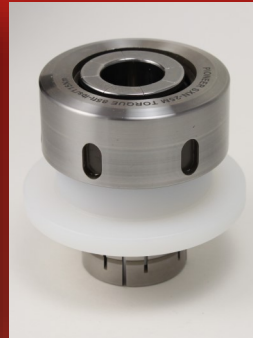
Push down on the collet remover until the slots collapse



Flip the collet on over on the tail end



Set the collet nut on the collet



Push down on the collet remover, the collet will expand into the nut



## SX25 Torque Wrench Head



Part Number	Drive	Type	Max Torque
TWSQ050-S55	1/2"	Hook / Spanner	SXN25M = 85 ft/lbs SXN25MB = 120 FT/LBS

## SX25 Wrench

- Fits SXN25 and SXN25M Lock Nuts

Part Number	Type
WRENCH 50-55 HOOK	Hook / Spanner



**AHB** Tooling & Machinery, Inc.

ISO Certified  
(800) 991-4225  
www.ahbinc.com  
customerservice@ahbinc.com

Complete Metalworking Solutions  
Roseville Saginaw & Jackson, MI