





Toolholders Compatible with Coromant Capto

9

License SANDVIK

ER *SYSTEM*

- 9.01 Features and Benefits
- 9.02 Information
- 9.05 CAPTO/ER

powRgrip *SYSTEM*

- 9.03 Features and Benefits
- 9.04 Information
- 9.06 CAPTO/PG



Swiss Precision Tools

ER CAPTO Toolholders

Features | Benefits



Swiss Quality

Made in Switzerland to ISO 9001/ISO 14001.

1

Marking

Type and part number (reduces selection error).

2

Traceability

Lot numbers are marked on all products for traceability throughout the entire manufacturing process.

3

Original REGO-FIX®

Our extensive experience results in a well-engineered system. Original only with the REGO-FIX® quality symbol Δ . Guarantees the best quality.

T.I.R. < 0.0001" (3 μ m)

I.D. to O.D.

Surface Finish max. Ra 0.25

Higher clamping force and higher transferable torque.

Q+® Balancing

100% balanced to G 2.5 @ 25'000 min⁻¹.

Hi-Q® Balancing System

Ready to accept Hi-Q® balancing rings, which will allow for the offset of the imbalance introduced by the cutting tool up to 80'000 min⁻¹.

Hi-Q® Clamping Nut Included

Guarantees highest clamping force and best balancing.

Vibration Dampening

For best machining results.

ID Chip Hole

Per DIN 69873 with 10 mm diameter.

9

Capto/ER Toolholder

Applications

These toolholders are designed for use on CNC machining centers with an automatic tool changer. They are universally suitable for drilling, machining, reaming, tapping and grinding. The vibration dampening of these systems reduce spindle wear and extend tool life.

Balancing

REGO-FIX® Q+® System Capto/ER toolholders are balanced by design to $G 2.5 @ 25'000 \text{ min}^{-1}$. Type H collets are ready to accept Hi-Q® balancing rings which allow precision balancing of the system up to $80'000 \text{ min}^{-1}$ depending on the balancing rings used.

Special Applications

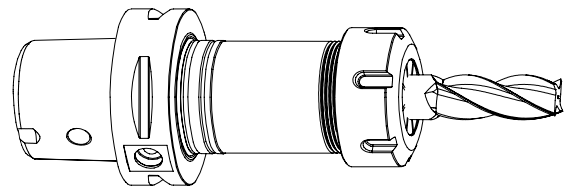
When additional clamping force is needed, e.g. when tapping with ER-GB or milling we recommend to use our friction bearing clamping nuts Hi-Q®/ERB and Hi-Q®/ERBC.

Matched Tooling System for Best Fit

For highest precision and best results the whole system counts. For that reason REGO-FIX® components are carefully matched for optimum fit and accuracy. This guarantees the best run-out and balance.

For the influence of run-out on tool life see the graph page 2.03

Recommended tightening torque see page 14.03/14.04



We recommend tightening the clamping nuts with a torque wrench. The maximum torque should not be more than 25% above the recommended tightening torque.



Swiss Precision Tools

PG CAPTO Toolholders

Features | Benefits

PGU or PGC required for toolholder assembly.
See page 13.07 for machine details.



Swiss Quality

Made in Switzerland to ISO 9001/ISO 14001.

1

Marking

Type and part number (reduces selection error).

2

Traceability

Lot numbers are marked on all products for traceability throughout the entire manufacturing process.

3

Original REGO-FIX®

Original only with the REGO-FIX® quality symbol \triangle . Guarantees the best quality.

T.I.R. of the Whole System <0.0001" (3 μ m)

Highest clamping force and lowest runout.

Surface Finish max. Ra 0.25

Higher clamping force and higher transferable torque.

Q+® Balancing

100% balanced to G 2.5 @ 25'000 min⁻¹. Ideal for High Speed Cutting (HSC) and High Performance Cutting (HPC).

Hi-Q® Balancing System

Ready to accept Hi-Q® balancing rings, which will allow for the offset of the imbalance introduced by the cutting tool up to 80'000 min⁻¹.

Minimal Outside Dimensions

Slim design provides more processing flexibility.

Fast

Tool clamping with hydraulic press in less than 10 seconds.

Excellent at Small Diameters

Clamping of small diameter tools from \varnothing 0.2 mm and higher.

Presetable Tooling System

Repeatability <0.0004" (10 μ m)

ID Chip Hole

Per DIN 69873 with 10 mm diameter.

9

Capto/PG Toolholder

Applications

These toolholders are designed for use on newest CNC machining centers for High Performance Cutting (HPC) and High Speed Cutting (HSC). Due to their precision and positive locking in the machine spindle, Capto/PG collets are suitable for highest demands. Vibration dampening of this system reduces spindle wear and extend tool life.

Balancing

REGO-FIX® Q+® System Capto/PG toolholders are balanced by design to G 2.5 @ 25'000 min⁻¹. Type H toolholders are ready to accept Hi-Q® balancing rings which allow precision balancing of the system up to 80'000 min⁻¹ depending on the balancing rings used.

Coolant Through

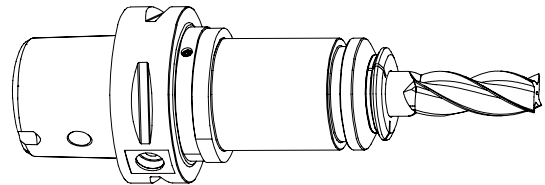
For use with coolant through tools.

Peripheral Cooling

PG-CF collets for peripheral cooling with non-coolant through tools.

Matched Tooling System for Best Fit

For highest precision and best results the whole system counts. For that reason REGO-FIX® components are carefully matched to fit together. This guarantees best run-out and balancing.

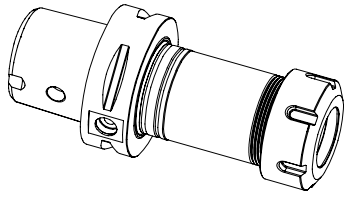




Swiss
Precision
Tools

ER

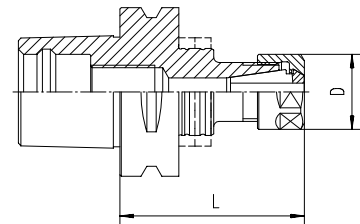
CAPTO Toolholders



CAPTO | ER

ER Toolholders

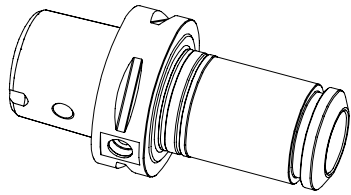
Type	Part No.	D [mm]	L [mm]	Balancing Rings	Wrenches
C3/ER 16 x 045	2803.11610*	28	45		7112.16010
C3/ER 20 x 045	2803.12010*	34	45		7112.20010
C4/ER 16 x 070	2804.11630*	28	70		7112.16010
C4/ER 20 x 052	2804.12010*	34	52		7112.20010
C4/ER 25 x 052	2804.12510*	42	52		7111.25000
C4/ER 32 x 054	2804.13210*	50	54		7111.32000
C5/ER 16 x 070 H	4805.11630	28	70	FWR 285	7112.16010
C5/ER 16 x 100 H	4805.11650	28	100	FWR 285	7112.16010
C5/ER 20 x 055	2805.12010*	34	55		7112.20010
C5/ER 20 x 100 H	4805.12050	34	100	FWR 325	7112.20010
C5/ER 25 x 055	2805.12510*	42	55		7111.25000
C5/ER 25 x 100 H	4805.12550	42	100	FWR 325	7111.25000
C5/ER 32 x 057	2805.13210*	50	57		7111.32000
C5/ER 32 x 070 H	4805.13230	50	70	FWR 405	7111.32000
C5/ER 32 x 100 H	4805.13250	50	100	FWR 405	7111.32000
C6/ER 11 x 150 H	4806.11170	19	150	FWR 325	7112.11010
C6/ER 16 x 070 H	4806.11630	28	70	FWR 325	7112.16010
C6/ER 16 x 100 H	4806.11650	28	100	FWR 325	7112.16010
C6/ER 16 x 150 H	4806.11670	28	150	FWR 325	7112.16010
C6/ER 20 x 060	2806.12020*	34	60	FWR 325	7112.20010
C6/ER 25 x 060	2806.12520*	42	60		7112.20010
C6/ER 25 x 100 H	4806.12550	42	100	FWR 325	7111.25000
C6/ER 25 x 130 H	4806.12560	42	130	FWR 325	7111.25000
C6/ER 32 x 060	2806.13220*	50	60		7111.32000
C6/ER 32 x 070 H	4806.13230	50	70	FWR 405	7111.32000
C6/ER 32 x 100 H	4806.13250	50	100	FWR 405	7111.32000
C6/ER 40 x 065	2806.14020*	63	65		7111.40000
C8/ER 25 x 070	2808.12530*	42	70		7111.25000
C8/ER 32 x 070	2808.13230*	50	70		7111.32000
C8/ER 40 x 070	2808.14030*	63	70		7111.40000
C8/ER 50 x 080	2808.15040*	78	80		7111.50000



9

Related Items	
Collets (Std & UP)	See Section 2.00
Collets (Tapping)	See Section 3.00
Nuts	See Section 4.00
Torque Wrench	See Section 13.00

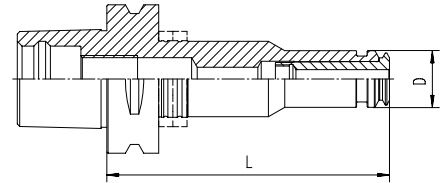
* Not for use with balancing rings



CAPTO | PG

powRgrip® Toolholders

Type	Part No.	D [mm]	L [mm]	Balancing Rings
C3 / PG 10 x 055*	2803.71010	16	55	–
C3 / PG 15 x 067*	2803.71520	24	67	–
C4 / PG 10 x 060*	2804.71020	16	60	–
C4 / PG 10 x 080 H	4804.71040	16	80	FWR 225
C4 / PG 15 x 062*	2804.71520	24	62	–
C4 / PG 15 x 080 H	4804.71540	24	80	FWR 285
C5 / PG 10 x 060*	2805.71020	16	60	–
C5 / PG 10 x 080 H	4805.71040	16	80	FWR 285
C5 / PG 10 x 120 H	4805.71060	16	120	FWR 285
C5 / PG 15 x 065*	2805.71520	24	65	–
C5 / PG 15 x 080 H	4805.71540	24	80	FWR 285
C5 / PG 15 x 120 H	4805.71560	24	120	FWR 325
C5 / PG 25 x 080*	2805.72540	40	80	–
C5 / PG 25 x 100 H	4805.72550	40	100	FWR 405
C6 / PG 10 x 080 H	4806.71040	16	80	FWR 325
C6 / PG 10 x 120 H	4806.71060	16	120	FWR 325
C6 / PG 10 x 160 H	4806.71080	16	160	FWR 325
C6 / PG 15 x 080 H	4806.71540	24	80	FWR 325
C6 / PG 15 x 120 H	4806.71560	24	120	FWR 325
C6 / PG 15 x 160 H	4806.71580	24	160	FWR 325
C6 / PG 25 x 085*	2806.72540	40	85	–
C6 / PG 25 x 100 H	4806.72550	40	100	FWR 405
C6 / PG 25 x 120 H	4806.72560	40	120	FWR 405
C6 / PG 25 x 160 H	4806.72580	40	160	FWR 405
C6 / PG 32 x 090*	2806.73240	50	90	–
C8 / PG 25 x 092*	2808.72540	40	92	–
C8 / PG 32 x 090*	2808.73240	50	90	–



9

Related Items	
Collets (Std & CF)	See Section 2.00
Collets (Tapping)	See Section 3.00
Accessories	See Section 13.00

*Not for use with balancing rings.