

REGO-FIX®
Swiss Line
PHC25/ER20
2625.92003.17



ER_{SYSTEM}

- 12.01 Features and Benefits
- 12.02 Information
- 12.03 PH/ER and MPH/ERM
for Non Coolant Through Tools
- 12.04 PHC/ER
for Coolant Through Tools





Swiss Precision Tools

ER Floating Chucks

Features | Benefits

Swiss Quality

Made in Switzerland to ISO 9001/ISO 14001.

1

Marking

Type and part number.

2

Traceability

Lot numbers are marked on all products for traceability throughout the entire manufacturing process.

3

Original REGO-FIX®

Our extensive experience results in a well-engineered system. Original only with the REGO-FIX® quality symbol \triangle . Guarantees the best quality.

Adjustable Floating Resistance

Fine adjustment between auto-centering and free floating. No restriction of the floating movement.

Adjustment for Tool Weight

Optimal setup by adjustment of floating resistance.

Vertical and Horizontal Application

Adjustable centering keeps the tool at the center of the floating chuck, even in the horizontal position. Prevents chatter marks and extends tool life.

Combined Ball and Friction Bearing

Low load applications:

- Ball bearing for easy floating

High load applications:

- Friction bearing to withstand the high pressure

Double Sealing Against Dirt

Prevents coolant and chips from entering the floating chuck.

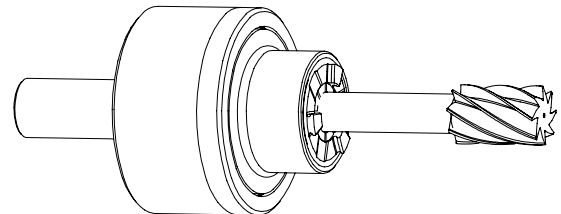


12

Straight Shank Non-Coolant through Floating Chuck PH/ER

Applications

REGO-FIX® floating chucks are excellent tools for reaming and tapping. Their design is such that the tool is self-centering in the vertical or horizontal position. The float is always parallel to the rotational axis and the rotation is both clockwise and counter clockwise. The self-centering feature allows very precise positioning of the reaming or tapping tool. This is especially important in horizontal applications, where ordinary floating chucks tend to move off the rotational axis because of the weight of the tool.



Straight Shank Coolant through Floating Chuck PHC/ER

For Coolant Through & Standard Tools

REGO-FIX® Floating Chucks PHC/ER for coolant through tools are especially designed for internal cooling and have the same advantages as the PH/ER Floating Chucks.

Mini-Floating Chuck MPH/ER

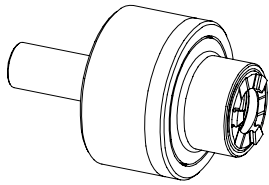
For Tight Space Applications

REGO-FIX® MPH/ER floating chucks are an efficient solution for tight space applications.



When using coolant through tools please order AXC clamping nuts and the appropriate sealing disks or Metallic Sealed Collets.

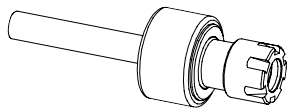
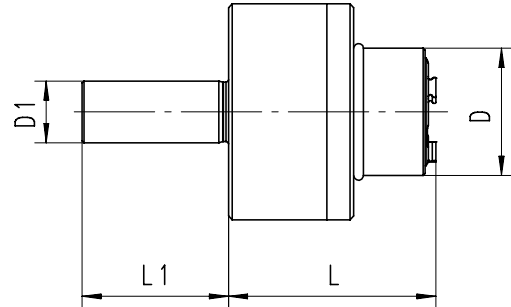
PH | ER



Floating Chucks For Non Coolant Through Tools

Type	Part No.	D [mm]	D1 h6 [mm]	L [mm]	L1 [mm]	Radial Float [mm]	Wrench
PH 5/8" / ER 11	2616.91102	22	15.88	36	34	0.8	7117.11000
PH 16 / ER 11	2616.91100	22	16.00	36	34	0.8	7117.11000
PH 3/4" / ER 11	2619.91102	22	19.05	36	34	0.8	7117.11000
PH 20 / ER 11	2620.91100	22	20.00	36	34	0.8	7117.11000
PH 22 / ER 11	2622.91100	22	22.00	36	34	0.8	7117.11000

Supplied with: clamping nut and spanner

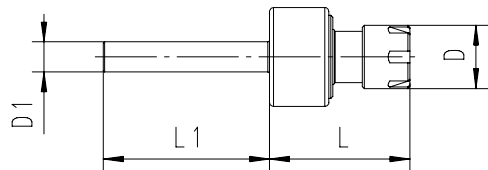


MPH | ERM

Mini-Floating Chucks For Non Coolant Through Tools

Type	Part No.	D [mm]	D1 h6 [mm]	L [mm]	L1 [mm]	Radial Float [mm]	Wrench
MPH 8 / ER 11 M	2608.91107	16	8.00	35	42	0.5	7113.11000
MPH 10 / ER 11 M	2610.91107	16	10.00	35	42	0.5	7113.11000
MPH 3/4" / ER 11 M	2619.91108	16	19.05	35	70	0.5	7113.11000
MPH 20 / ER 11 M	2620.91107	16	20.00	35	42	0.5	7113.11000
MPH 22 / ER 11 M	2622.91107	16	22.00	35	42	0.5	7113.11000
MPH 25 / ER 11 M	2625.91107	16	25.00	35	42	0.5	7113.11000
MPH 1" / ER 11 M	2625.91108	16	25.40	35	42	0.5	7113.11000

Supplied with: Floating chuck, clamping nut and spanner

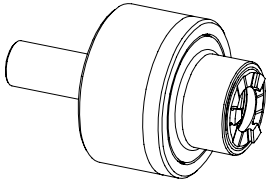


Related Items

Collets (Std & UP)	See Section 2.00
Collets (Tapping)	See Section 3.00
Nuts	See Section 4.00

For drawings with detailed dimensions see:

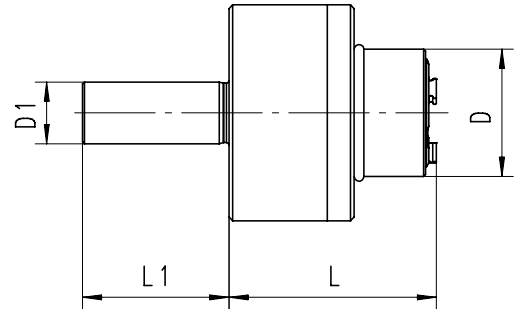
search.rego-fix.com



Floating Chucks For Coolant Through Tools

Type	Part No.	D [mm]	D1 h6 [mm]	L [mm]	L1 [mm]	Radial Float [mm]	Wrench
PHC 5/8" / ER 20	2616.92004	33	15.88	53.5	38	1.0	7117.20000
PHC 16 / ER 20	2616.92003	33	16.00	53.5	38	1.0	7117.20000
PHC 3/4" / ER 20	2619.92004	33	19.05	53.5	38	1.0	7117.20000
PHC 20 / ER 20	2620.92003	33	20.00	53.5	38	1.0	7117.20000
PHC 22 / ER 20	2622.92003	33	22.00	53.5	38	1.0	7117.20000
PHC 25 / ER 20	2625.92003	33	25.00	53.5	38	1.0	7117.20000
PHC 1" / ER 20	2625.92004	33	25.40	53.5	38	1.0	7117.20000
PHC 3/4" / ER 32	2619.93204	46	19.05	64.5	46	1.5	7117.32000
PHC 20 / ER 32	2620.93203	46	20.00	64.5	46	1.5	7117.32000
PHC 22 / ER 32	2622.93203	46	22.00	64.5	46	1.5	7117.32000
PHC 25 / ER 32	2625.93203	46	25.00	64.5	46	1.5	7117.32000
PHC 1" / ER 32	2625.93204	46	25.40	64.5	46	1.5	7117.32000
PHC 32 / ER 32	2632.93203	46	32.00	64.5	46	1.5	7117.32000
PHC 1 1/4" / ER 32	2632.93204	46	31.75	64.5	46	1.5	7117.32000
PHC 1 3/4" / ER 32	2644.93204	46	44.45	64.5	46	1.5	7117.32000

Supplied with: clamping nut, spanner and adjusting key



When ordering please specify if a coolant nut is required. One will be substituted free of charge at that time.



When using coolant through tools please order AXC clamping nuts and the appropriate sealing disks or Metallic Sealed Collets.

Related Items

Collets (Std & UP)	See Section 2.00
Collets (Tapping)	See Section 3.00
Nuts	See Section 4.00

12

For drawings with detailed dimensions see:
search.rego-fix.com