



Other Toolholders

(SwissQuick Reductions)
(Morse Tapers)
(Automotive Shank)

11

ER SYSTEM

- 11.01 Features and Benefits
ERM/ERM and ER/ERM**
- 11.02 ERM/ERM and ER/ERM
SwissQuick Collet Reductions**
- 11.03 Features and Benefits
ISO 20/ER**
- 11.04 ISO 20 ER Toolholders for Haas Mini-Mill**
- 11.05 SH/ER & MK/ER Features and Benefits
Automotive Shank Toolholders
with Trapezoidal Thread & Morse Tapers**
- 11.06 SH/ER and MK/ER Toolholders**



Swiss Precision Tools

Features | Benefits



Swiss Quality

Made in Switzerland to ISO 9001/ISO 14001.

1

Marking

Type and part number.

2

Traceability

Lot numbers are marked on all products for traceability throughout the entire manufacturing process.

3

Original REGO-FIX®

Our extensive experience results in a well-engineered system. Original only with the REGO-FIX® quality symbol . Guaranteed for best quality.

Surface Finish max. Ra 0.25

Higher clamping force and higher transferable torque.

Applications

The collet reductions are mainly used on Swiss Screw Machines with live tooling.

Quick Change System

Best suited for quick tool change as the cutting tools can be preinstalled.

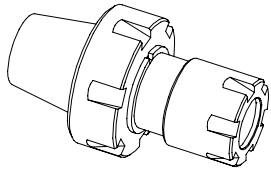
Length Presetting

Tools can be preset outside of the machine reducing set-up and tool change time.

Minimal External Dimensions

By using the Hi-Q®/ERM clamping nuts minimal external dimensions can be achieved.

11



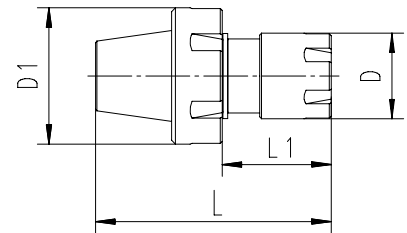
ERM | ERM
ER | ERM

SwissQuick Collet Reductions

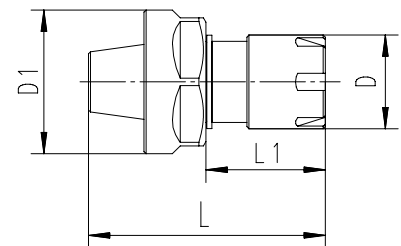
Type	Part No.	L [mm]	L1 [mm]	D [mm]	D1 [mm]	Wrenches
Mini-Nut Reductions						
ER 11 M / ER 8 M	7161.11080	33	16.5	12	16	7113.11000 / 7113.08000
ER 16 M / ER 11 M	7161.16110	42.5	18.5	16	23	7113.16000 / 7113.11000
ER 20 M / ER 16 M	7161.20160	55.5	28	22	28	7113.20000 / 7113.16000
ER 25 M / ER 16 M	7161.25160	60.5	28	22	35	7113.25000 / 7113.16000
ER 25 M / ER 20 M	7161.25200	60.5	28	28	35	7113.25000 / 7113.20000
Standard Nut Reductions						
ER 11 / ER 8 M	7162.11080	33	16.5	12	19	7112.11010 / 7113.08000
ER 20 / ER 16 M	7162.20160	55.5	28	22	34	7112.20010 / 7113.16000
ER 25 / ER 16 M	7162.25160	60.5	28	22	42	7111.25000 / 7113.16000
ER 25 / ER 20 M	7162.25200	60.5	28	28	42	7111.25000 / 7113.25000

Please call for availability of new products within this line.

Type ERM/ERM
with Mini-Thread



Type ER/ERM
with Standard-Thread



11

Related Items

Collets (Std & UP)	See Section 2.00
Collets (Tapping)	See Section 3.00
Nuts	See Section 4.00



The main body and the main nut are connected and not intended to be separated.

For drawings with detailed dimensions see:
search.rego-fix.com



Swiss
Precision
Tools

ER

ISO 20 ER Toolholders

Features | Benefits

DIN 228-A

ISO 20/ER Toolholders for Haas Office-Mill

Swiss Quality

Made in Switzerland to ISO 9001/ISO 14001.

Marking

Type and part number.

Traceability

Lot numbers are marked on all products for traceability throughout the entire manufacturing process.

Original REGO-FIX®

Our extensive experience results in a well-engineered system. Original only with the REGO-FIX® quality symbol Δ . Guarantees the best quality.

Q+® Balancing

100% balanced to G 2.5 @ 40'000 min⁻¹.
Balance includes integral pull stud.

Matched Tooling System for Best Fit

For highest precision and best results the whole system counts. For that reason REGO-FIX® components are carefully matched for optimum fit and accuracy. This guarantees the best run-out and balance.

For the influence of run-out on tool life see the graph page 2.03

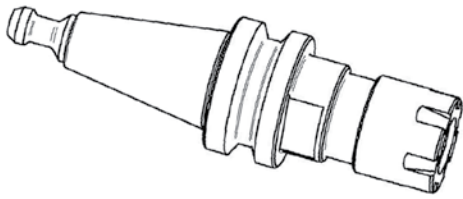


11

Recommended tightening torque see page 14.03/14.04



We recommend tightening the clamping nuts with a torque wrench. The maximum torque should not be more than 25% above the recommended tightening torque.

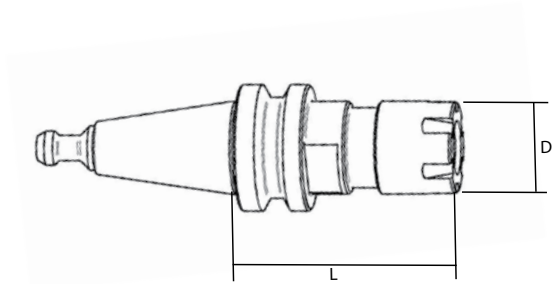


ISO 20 ER Toolholders

Type	Part No.	D [mm]	L [mm]	Wrenches
ISO 20 / ER 11M x 048**	2420.11116	16	48	7113.11000
ISO 20 / ER 16M x 053**	2420.11616	22	53	7113.16000
ISO 20 / ER 20M x 055**	2420.12016	28	55	7113.20000
ISO 20 / PG 10 x 058*	2420.71015	16	48	--

* Supplied with integral Pull Stud - for use with powRgrip tool holding system

**Supplied with: clamping nut & integral Pull Stud



Related Items	
Collets (Std & UP)	See Section 2.00
Collets (Tapping)	See Section 3.00
Nuts	See Section 4.00
Torque Wrench	See Section 13.00

For drawings with detailed dimensions see:
search.rego-fix.com



Swiss Precision Tools

ER

Morse Taper and Automotive Shank Toolholders

Features | Benefits

DIN 6327-C

Automotive Shank SH/ER & Morse Taper MK/ER

Swiss Quality

Made in Switzerland to ISO 9001/ISO 14001.

1

Marking

Type and part number.

2

Traceability

Lot numbers are marked on all products for traceability throughout the entire manufacturing process.

3

Original REGO-FIX®

Our extensive experience results in a well-engineered system. Original only with the REGO-FIX® quality symbol Δ . Guarantees the best quality.

Matched Tooling System for Best Fit

For highest precision and best results the whole system counts. For that reason REGO-FIX® components are carefully matched for optimum fit and accuracy. This guarantees the best run-out and balance.

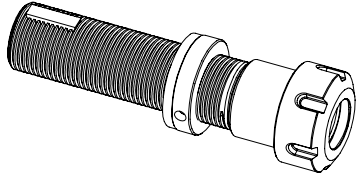
For the influence of run-out on tool life see the graph page 2.03

Recommended tightening torque see page 14.03/14.04

11

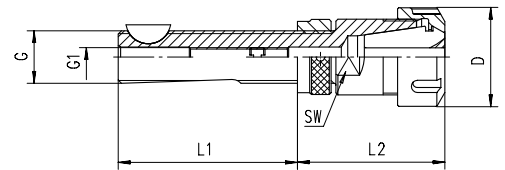


We recommend tightening the clamping nuts with a torque wrench. The maximum torque should not be more than 25% above the recommended tightening torque.

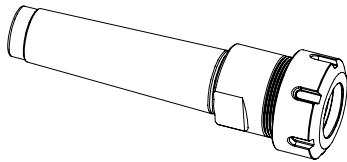


Automotive Shank ER Toolholders

Type	Part No.	D [mm]	G	G1	L1 [mm]	L2 [mm]	SW [mm]	Wrenches
SH 12 x 050 / ER 11	2612.11104	19.0	Tr 12 x 1.5	M5	50.0	46.6	12	7112.11010
SH 16 x 073 / ER 16	2616.11604	28.0	Tr 16 x 1.5	M6	73.0	53.5	19	7112.16010
SH 20 x 076 / ER 20	2620.12004	34.0	Tr 20 x 2.0	M8	76.0	59.5	22	7112.20010
SH 28 x 083 / ER 25	2628.12504	42.0	Tr 28 x 2.0	M18x1.5	83.0	57.0	28	7111.25000
SH 7/8 x 078/ER 25	2622.12505	42.0	Tr7/8" x 12	M12	78	54.5	28	7111.25000

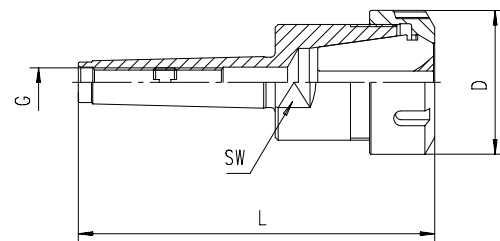


Supplied with: clamping nut, back-up screw, setting nut and Woodruff-key



Morse Taper ER Toolholders

Type	Part No.	D [mm]	L [mm]	G	SW [mm]	Wrenches
MK 1 / ER 16 x 041	2701.11600	28	93.5	M6	17	7112.16010
MK 2 / ER 20 x 049	2702.12000	34	111.5	M10	22	7112.20010
MK 2 / ER 25 x 052	2702.12500	42	115	M10	24	7111.25000
MK 2 / ER 32 x 060	2702.13200	50	123	M10	36	7111.32000
MK 3 / ER 25 x 052	2703.12500	42	132	M12	24	7111.25000
MK 3 / ER 32 x 070	2703.13200	50	150	M12	24	7111.32000
MK 4 / ER 32 x 060	2704.13200	50	163	M16	32	7111.32000
MK 4 / ER 40 x 082	2704.14000	63	183	M16	32	7111.40000
MK 5 / ER 40 x 064	2705.14000	63	192	M20	45	7111.40000
MK 5 / ER 50 x 086	2705.15900	78	214	M20	45	7111.50000



Supplied with: clamping nut and back-up screw

*Threaded Tangs Available Upon Request

Related Items

Collets (Std & UP)	See Section 2.00
Collets (Tapping)	See Section 3.00
Nuts	See Section 4.00
Torque Wrench	See Section 13.00

For drawings with detailed dimensions see:
search.rego-fix.com