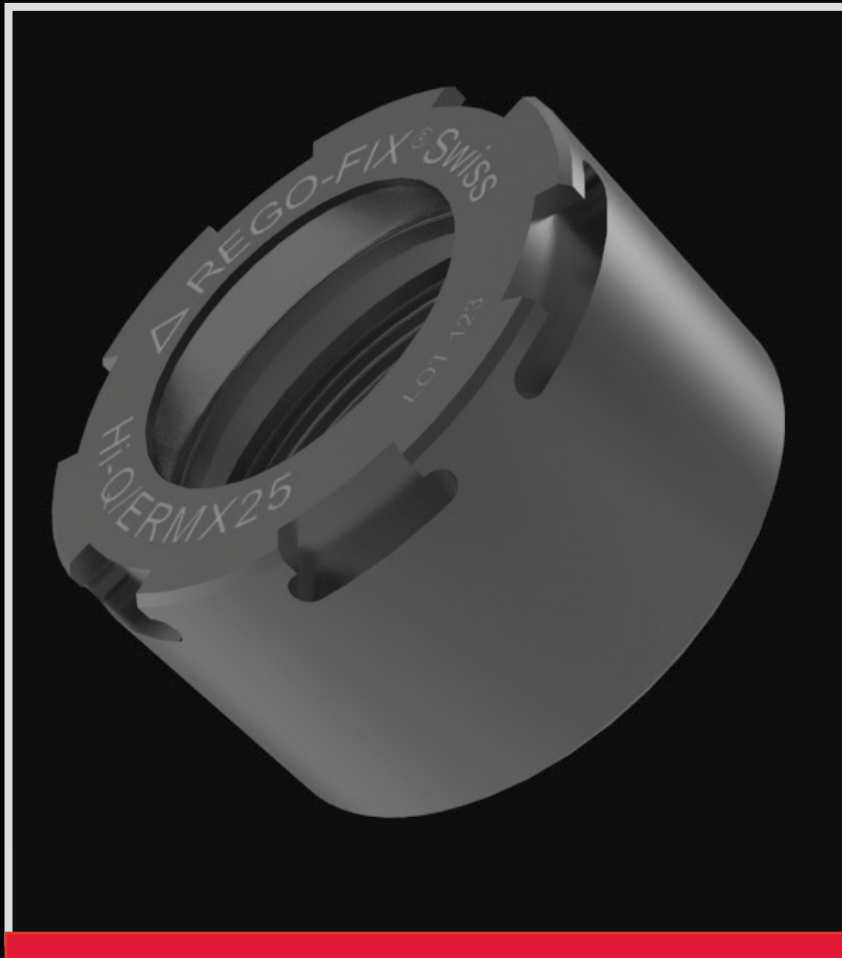


intRlox Mini Nut

(patent pending)

Anti-Slip Locking Design



Made in
Switzerland



Swiss
Precision
Tools



REGO-FIX®

intRlox Mini Nut

intRlox Mini Clamping Nut

The new intRlox mini clamping nut features an anti-slip locking design that will keep the wrench from slipping off during the assembly/disassembly operation. The new nut features a wrench that fits over and onto the nut that has locking grooves to keep it from slipping.

- Available in ER11, ER 16 & ER 20 series
- Standard and coolant versions available (ER 16 & ER 20 only)
- Replaces older standard mini-nuts
- Hi-Q design for added clamping forces
- Compatible with standard mini-nut thread design
- Compatible with REGO-FIX sealing disks (DS/ER) and coolant flush disks (KS/ER)

Part No.	Description
3511.60000	New Hi-Q/ERMX11 clamping nut
3516.60000	New Hi-Q/ERMX16 clamping nut
3520.60000	New Hi-Q/ERMX20 clamping nut
3516.70000	New Hi-Q/ERMXC16 clamping nut
3520.70000	New Hi-Q/ERMXC20 clamping nut
7118.11000	Spanner E11MX for ER 11 MX clamping nut
7118.16000	Spanner E16MX for ER 16 MX/MXC clamping nut
7118.20000	Spanner E20MX for ER 20 MX/MXC clamping nut
7158.11000	Torque wrench head A-E11MX for ER 11MX clamping nut
7158.16000	Torque wrench head A-E16MX for ER 16 MX/MXC clamping nut
7158.20000	Torque wrench head A-E20MX for ER 20 MX/MXC clamping nut
7159.11000	Extension to Spanner E 11 MX and A-E 11 MX with ER 11 MX clamping nut profile
7159.16000	Extension to Spanner E 16 MX and A-E 16 MX with ER 16 MX/MXC clamping nut profile
7159.20000	Extension to Spanner E 20 MX and A-E 20 MX with ER 20 MX/MXC clamping nut profile



*Please see REGO-FIX ER System catalog for torque wrenches and sealing disk options

AHB Tooling & Machinery, Inc.
ISO Certified
(800) 991-4225
www.ahbinc.com
customerservice@ahbinc.com

Complete Metalworking Solutions
Roseville Saginaw & Jackson, MI