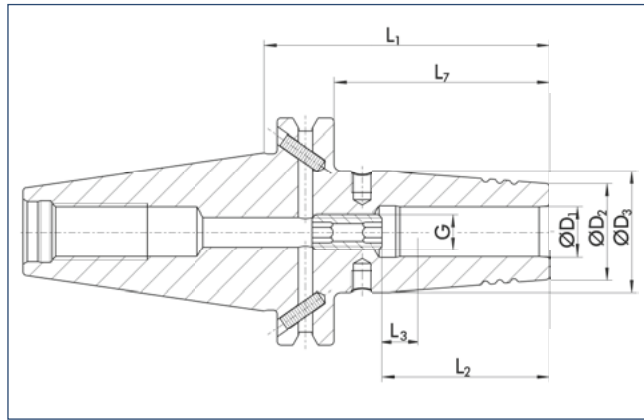


CELSIO SSF CAT 40

with axial length adjustment



CELSIO SSF CAT 40

con ajuste de la longitud axial



< 0.003 mm*



50000 min⁻¹



25000 min⁻¹



Technical data

Datos técnicos

D ₁	ID	D ₂	D ₃	L ₁	L ₂	L ₃	L ₇	G	M _{min}	m
[inch]		[mm]	[mm]	[mm]	[mm]	[mm]	[mm]		[Nm]	[kg]
1/4"	0208650	21.0	27.0	80.0	36.0	10.0	61.0	M5	20.0	1.0
1/4"	0208651	21.0	27.0	130.0	36.0	10.0	111.0	M5	20.0	1.2
1/4"	0208652	21.0	27.0	160.0	36.0	10.0	141.0	M5	20.0	1.4
5/16"	0208655	21.0	27.0	80.0	36.0	10.0	61.0	M6	52.0	1.0
5/16"	0208656	21.0	27.0	130.0	36.0	10.0	111.0	M6	52.0	1.2
5/16"	0208657	21.0	27.0	160.0	36.0	10.0	141.0	M6	52.0	1.4
3/8"	0208660	24.0	32.0	80.0	42.0	10.0	61.0	M8x1	70.0	1.0
3/8"	0208661	24.0	32.0	130.0	42.0	10.0	111.0	M8x1	70.0	1.3
3/8"	0208662	24.0	32.0	160.0	42.0	10.0	141.0	M8x1	70.0	1.6
7/16"	0208665	24.0	32.0	80.0	42.0	10.0	61.0	M8x1	150.0	1.0
7/16"	0208666	24.0	32.0	130.0	42.0	10.0	111.0	M8x1	150.0	1.3
7/16"	0208667	24.0	32.0	160.0	42.0	10.0	141.0	M8x1	150.0	1.6
1/2"	0208670	24.0	32.0	80.0	47.0	10.0	61.0	M10x1	150.0	1.0
1/2"	0208671	24.0	32.0	130.0	47.0	10.0	111.0	M10x1	150.0	1.3
1/2"	0208672	24.0	32.0	160.0	47.0	10.0	141.0	M10x1	150.0	1.6

• Can be supplied from stock

• Posible suministro de existencias

Design suitable for MQL operations available on request

Diseño apto para operaciones MQL disponible a pedido

Bore for data carrier as an option

Orificio para portador de datos como opción

Additional sizes and special designs available on request

Tamaños adicionales y diseños especiales disponibles a pedido

* Run-out accuracy measured in the clamping diameter according to DIN 69882-8

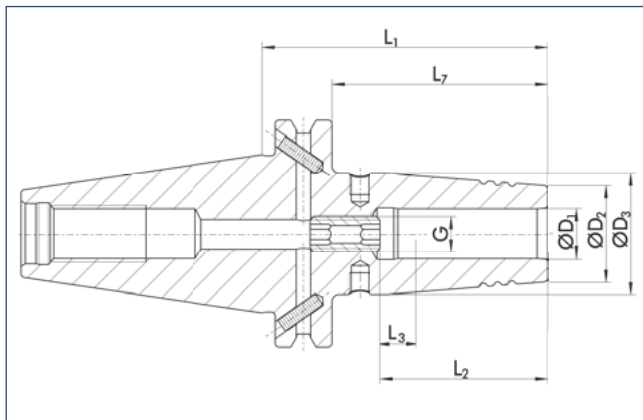
* Precisión de concentricidad medida en el diámetro de sujeción de acuerdo a DIN 69882-8

CELSIO SSF CAT 40

with axial length adjustment

CELSIO SSF CAT 40

con ajuste de la longitud axial



CAT



< 0.003 mm*



50000 min⁻¹



25000 min⁻¹



Technical data

Datos técnicos

D ₁ [inch]	ID	D ₂ [mm]	D ₃ [mm]	L ₁ [mm]	L ₂ [mm]	L ₃ [mm]	L ₇ [mm]	G	M _{min} [Nm]	m [kg]
5/8"	0208675	27.0	34.0	80.0	50.0	10.0	61.0	M12x1	300.0	1.0
5/8"	0208676	27.0	34.0	130.0	50.0	10.0	111.0	M12x1	300.0	1.4
5/8"	0208677	27.0	34.0	160.0	50.0	10.0	141.0	M12x1	300.0	1.6
3/4"	0208680	33.0	42.0	80.0	52.0	10.0	61.0	M16x1	420.0	1.2
3/4"	0208681	33.0	42.0	130.0	52.0	10.0	111.0	M16x1	420.0	1.5
3/4"	0208682	33.0	42.0	160.0	52.0	10.0	141.0	M16x1	420.0	1.9
1"	0208685	44.0	53.0	100.0	58.0	10.0	81.0	M16x1	550.0	1.6
1"	0208686	44.0	53.0	130.0	58.0	10.0	111.0	M16x1	550.0	1.8
1"	0208687	44.0	53.0	160.0	58.0	10.0	141.0	M16x1	550.0	2.5
1 1/4"	0208690	44.0	53.0	100.0	58.0	10.0	81.0	M16x1	600.0	1.5
1 1/4"	0208691	44.0	53.0	130.0	58.0	10.0	111.0	M16x1	600.0	1.7
1 1/4"	0208692	44.0	53.0	160.0	58.0	10.0	141.0	M16x1	600.0	1.9

• Can be supplied from stock

• Posible suministro de existencias

Design suitable for MQL operations available on request

Diseño apto para operaciones MQL disponible a pedido

Bore for data carrier as an option

Orificio para portador de datos como opción

Additional sizes and special designs available on request

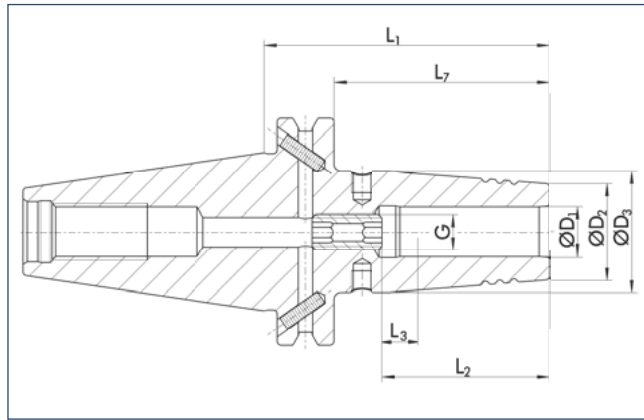
Tamaños adicionales y diseños especiales disponibles a pedido

* Run-out accuracy measured in the clamping diameter according DIN 69882-8

* Precisión de concentricidad medida en el diámetro de sujeción de acuerdo a DIN 69882-8

CELSIO SSF CAT 40

with axial length adjustment



CELSIO SSF CAT 40

con ajuste de la longitud axial



< 0.003 mm*



50000 min⁻¹



25000 min⁻¹



Technical data

Datos técnicos

D ₁ [mm]	ID	D ₂ [mm]	D ₃ [mm]	L ₁ [mm]	L ₂ [mm]	L ₃ [mm]	L ₇ [mm]	G	M _{min} [Nm]	m [kg]
6.0	0208600	21.0	27.0	80.0	36.0	10.0	61.0	M5	20.0	1.0
6.0	0208601	21.0	27.0	130.0	36.0	10.0	111.0	M5	20.0	1.2
6.0	0208602	21.0	27.0	160.0	36.0	10.0	141.0	M5	20.0	1.4
8.0	0208605	21.0	27.0	80.0	36.0	10.0	61.0	M6	52.0	1.0
8.0	0208606	21.0	27.0	130.0	36.0	10.0	111.0	M6	52.0	1.2
8.0	0208607	21.0	27.0	160.0	36.0	10.0	141.0	M6	52.0	1.4
10.0	0208610	24.0	32.0	80.0	42.0	10.0	61.0	M8x1	70.0	1.0
10.0	0208611	24.0	32.0	130.0	42.0	10.0	111.0	M8x1	70.0	1.3
10.0	0208612	24.0	32.0	160.0	42.0	10.0	141.0	M8x1	70.0	1.6
12.0	0208615	24.0	32.0	80.0	47.0	10.0	61.0	M10x1	150.0	1.0
12.0	0208616	24.0	32.0	130.0	47.0	10.0	111.0	M10x1	150.0	1.3
12.0	0208617	24.0	32.0	160.0	47.0	10.0	141.0	M10x1	150.0	1.6

- Can be supplied from stock

Design suitable for MQL operations available on request
 Bore for data carrier as an option

Additional sizes and special designs available on request

* Run-out accuracy measured in the clamping diameter according to DIN 69882-8

- Posible suministro de existencias

Diseño apto para operaciones MQL disponible a pedido
 Orificio para portador de datos como opción

Tamaños adicionales y diseños especiales disponibles a pedido

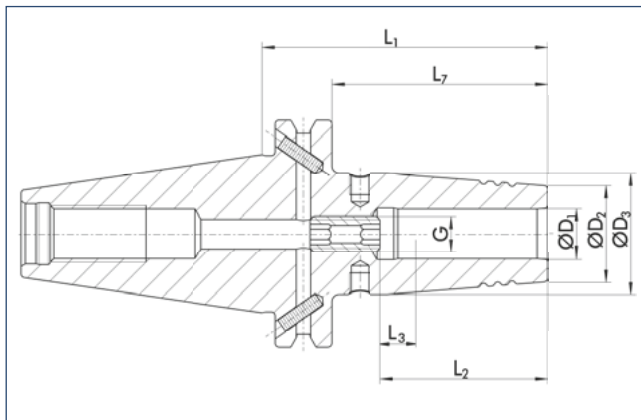
* Precisión de concentricidad medida en el diámetro de sujeción de acuerdo a DIN 69882-8

CELSIO SSF CAT 40

with axial length adjustment

CELSIO SSF CAT 40

con ajuste de la longitud axial



CAT



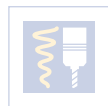
< 0.003 mm*



50000 min⁻¹



25000 min⁻¹



Technical data

Datos técnicos

D ₁		D ₂	D ₃	L ₁	L ₂	L ₃	L ₇	G	M _{min}	m
[mm]	ID	[mm]	[mm]	[mm]	[mm]	[mm]	[mm]		[Nm]	[kg]
16.0	0208625	27.0	34.0	80.0	50.0	10.0	61.0	M12x1	300.0	1.0
16.0	0208626	27.0	34.0	130.0	50.0	10.0	111.0	M12x1	300.0	1.4
16.0	0208627	27.0	34.0	160.0	50.0	10.0	141.0	M12x1	300.0	1.6
20.0	0208635	33.0	42.0	80.0	52.0	10.0	61.0	M16x1	420.0	1.2
20.0	0208636	33.0	42.0	130.0	52.0	10.0	111.0	M16x1	420.0	1.5
20.0	0208637	33.0	42.0	160.0	52.0	10.0	141.0	M16x1	420.0	1.9
25.0	0208640	44.0	53.0	100.0	58.0	10.0	81.0	M16x1	550.0	1.6
25.0	0208641	44.0	53.0	130.0	58.0	10.0	111.0	M16x1	550.0	1.8
25.0	0208642	44.0	53.0	160.0	58.0	10.0	141.0	M16x1	550.0	2.5
32.0	0208645	44.0	53.0	100.0	58.0	10.0	81.0	M16x1	600.0	1.5
32.0	0208646	44.0	53.0	130.0	58.0	10.0	111.0	M16x1	600.0	1.7
32.0	0208647	44.0	53.0	160.0	58.0	10.0	141.0	M16x1	600.0	1.9

• Can be supplied from stock

• Posible suministro de existencias

Design suitable for MQL operations available on request

Diseño apto para operaciones MQL disponible a pedido

Bore for data carrier as an option

Orificio para portador de datos como opción

Additional sizes and special designs available on request

Tamaños adicionales y diseños especiales disponibles a pedido

* Run-out accuracy measured in the clamping diameter according DIN 69882-8

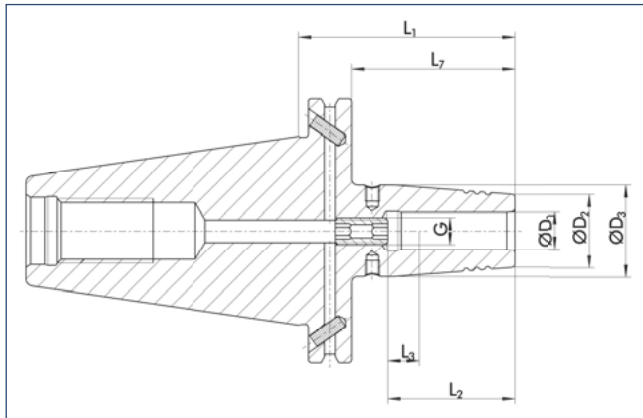
* Precisión de concentricidad medida en el diámetro de sujeción de acuerdo a DIN 69882-8

CELSIO SSF CAT 50

with axial length adjustment

CELSIO SSF CAT 50

con ajuste de la longitud axial



CAT



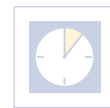
< 0.003 mm*



30000 min⁻¹



25000 min⁻¹



Technical data

Datos técnicos

D ₁ [inch]	ID	D ₂ [mm]	D ₃ [mm]	L ₁ [mm]	L ₂ [mm]	L ₃ [mm]	L ₇ [mm]	G	M _{min} [Nm]	m [kg]
1/4"	0208750	21.0	27.0	80.0	36.0	10.0	61.0	M5	20.0	2.9
1/4"	0208751	21.0	27.0	130.0	36.0	10.0	111.0	M5	20.0	3.0
1/4"	0208752	21.0	27.0	160.0	36.0	10.0	141.0	M5	20.0	3.2
5/16"	0208755	21.0	27.0	80.0	36.0	10.0	61.0	M6	52.0	2.9
5/16"	0208756	21.0	27.0	130.0	36.0	10.0	111.0	M6	52.0	3.0
5/16"	0208757	21.0	27.0	160.0	36.0	10.0	141.0	M6	52.0	3.2
3/8"	0208760	24.0	32.0	80.0	42.0	10.0	61.0	M8x1	70.0	2.9
3/8"	0208761	24.0	32.0	130.0	42.0	10.0	111.0	M8x1	70.0	3.1
3/8"	0208762	24.0	32.0	160.0	42.0	10.0	141.0	M8x1	70.0	3.5
7/16"	0208765	24.0	32.0	80.0	42.0	10.0	61.0	M8x1	150.0	2.9
7/16"	0208766	24.0	32.0	130.0	42.0	10.0	111.0	M8x1	150.0	3.1
7/16"	0208767	24.0	32.0	160.0	42.0	10.0	141.0	M8x1	150.0	3.5
1/2"	0208770	24.0	32.0	80.0	47.0	10.0	61.0	M10x1	150.0	2.9
1/2"	0208771	24.0	32.0	130.0	47.0	10.0	111.0	M10x1	150.0	3.1
1/2"	0208772	24.0	32.0	160.0	47.0	10.0	141.0	M10x1	150.0	3.5

• Can be supplied from stock

• Posible suministro de existencias

Design suitable for MQL operations available on request

Diseño apto para operaciones MQL disponible a pedido

Bore for data carrier as an option

Orificio para portador de datos como opción

Additional sizes and special designs available on request

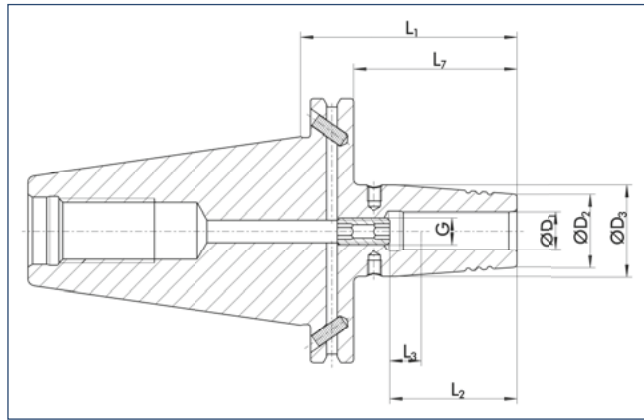
Tamaños adicionales y diseños especiales disponibles a pedido

* Run-out accuracy measured in the clamping diameter according to DIN 69882-8

* Precisión de concentricidad medida en el diámetro de sujeción de acuerdo a DIN 69882-8

CELSIO SSF CAT 50

with axial length adjustment



CELSIO SSF CAT 50

con ajuste de la longitud axial



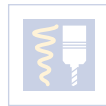
< 0.003 mm*



30000 min⁻¹



25000 min⁻¹



Technical data

Datos técnicos

D ₁	ID	D ₂	D ₃	L ₁	L ₂	L ₃	L ₇	G	M _{min}	m
[inch]		[mm]	[mm]	[mm]	[mm]	[mm]	[mm]		[Nm]	[kg]
5/8"	0208775	27.0	34.0	80.0	50.0	10.0	61.0	M12x1	300.0	2.9
5/8"	0208776	27.0	34.0	130.0	50.0	10.0	111.0	M12x1	300.0	3.1
5/8"	0208777	27.0	34.0	160.0	50.0	10.0	141.0	M12x1	300.0	3.6
3/4"	0208780	33.0	42.0	80.0	52.0	10.0	61.0	M16x1	420.0	2.9
3/4"	0208781	33.0	42.0	130.0	52.0	10.0	111.0	M16x1	420.0	3.5
3/4"	0208782	33.0	42.0	160.0	52.0	10.0	141.0	M16x1	420.0	4.0
1"	0208785	44.0	53.0	100.0	58.0	10.0	81.0	M16x1	550.0	3.5
1"	0208786	44.0	53.0	130.0	58.0	10.0	111.0	M16x1	550.0	4.5
1"	0208787	44.0	53.0	160.0	58.0	10.0	141.0	M16x1	550.0	4.1
1 1/4"	0208790	44.0	53.0	100.0	58.0	10.0	81.0	M16x1	600.0	3.4
1 1/4"	0208792	44.0	53.0	160.0	58.0	10.0	141.0	M16x1	600.0	4.4

- Can be supplied from stock

- Design suitable for MQL operations available on request
- Bore for data carrier as an option

Additional sizes and special designs available on request

* Run-out accuracy measured in the clamping diameter according DIN 69882-8

- Posible suministro de existencias

- Diseño apto para operaciones MQL disponible a pedido
- Orificio para portador de datos como opción

Tamaños adicionales y diseños especiales disponibles a pedido

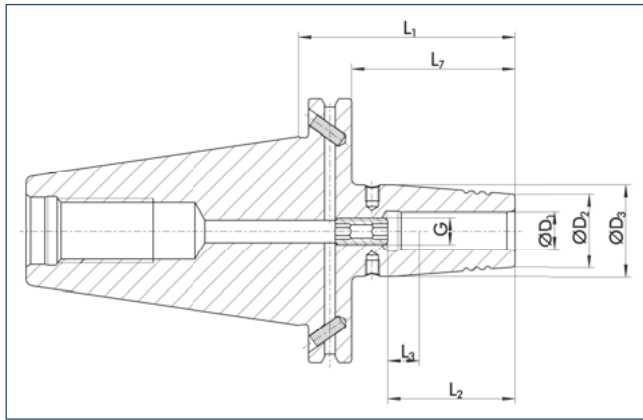
* Precisión de concentricidad medida en el diámetro de sujeción de acuerdo a DIN 69882-8

CELSIO SSF CAT 50

with axial length adjustment

CELSIO SSF CAT 50

con ajuste de la longitud axial



CAT



< 0.003 mm*



30000 min⁻¹



25000 min⁻¹



Technical data

Datos técnicos

D ₁ [mm]	ID	D ₂ [mm]	D ₃ [mm]	L ₁ [mm]	L ₂ [mm]	L ₃ [mm]	L ₇ [mm]	G	M _{min} [Nm]	m [kg]
6.0	0208700	21.0	27.0	80.0	36.0	10.0	61.0	M5	20.0	2.9
6.0	0208701	21.0	27.0	130.0	36.0	10.0	111.0	M5	20.0	3.0
6.0	0208702	21.0	27.0	160.0	36.0	10.0	141.0	M5	20.0	3.2
8.0	0208705	21.0	27.0	80.0	36.0	10.0	61.0	M6	52.0	2.9
8.0	0208706	21.0	27.0	130.0	36.0	10.0	111.0	M6	52.0	3.0
8.0	0208707	21.0	27.0	160.0	36.0	10.0	141.0	M6	52.0	3.2
10.0	0208710	24.0	32.0	80.0	42.0	10.0	61.0	M8x1	70.0	2.9
10.0	0208711	24.0	32.0	130.0	42.0	10.0	111.0	M8x1	70.0	3.1
10.0	0208712	24.0	32.0	160.0	42.0	10.0	141.0	M8x1	70.0	3.5
12.0	0208715	24.0	32.0	80.0	47.0	10.0	61.0	M10x1	150.0	2.9
12.0	0208716	24.0	32.0	130.0	47.0	10.0	111.0	M10x1	150.0	3.1
12.0	0208717	24.0	32.0	160.0	47.0	10.0	141.0	M10x1	150.0	3.5

• Can be supplied from stock

Design suitable for MQL operations available on request

Bore for data carrier as an option

Additional sizes and special designs available on request

* Run-out accuracy measured in the clamping diameter according to DIN 69882-8

• Posible suministro de existencias

Diseño apto para operaciones MQL disponible a pedido

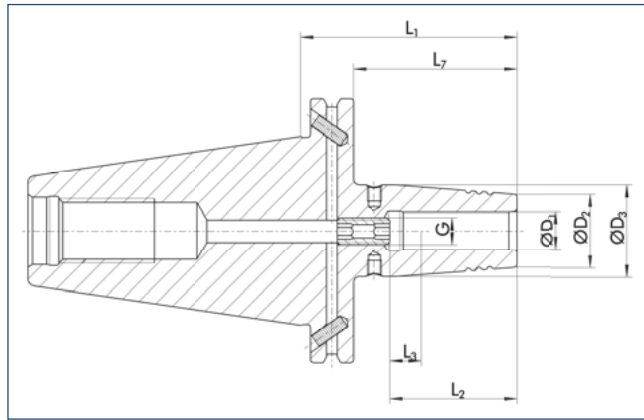
Orificio para portador de datos como opción

Tamaños adicionales y diseños especiales disponibles a pedido

* Precisión de concentricidad medida en el diámetro de sujeción de acuerdo a DIN 69882-8

CELSIO SSF CAT 50

with axial length adjustment



CELSIO SSF CAT 50

con ajuste de la longitud axial



< 0.003 mm*



30000 min⁻¹



25000 min⁻¹



✓



✓



Technical data

Datos técnicos

D ₁ [mm]	ID	D ₂ [mm]	D ₃ [mm]	L ₁ [mm]	L ₂ [mm]	L ₃ [mm]	L ₇ [mm]	G	M _{min} [Nm]	m [kg]
16.0	0208725	27.0	34.0	80.0	50.0	10.0	61.0	M12x1	300.0	2.9
16.0	0208726	27.0	34.0	130.0	50.0	10.0	111.0	M12x1	300.0	3.1
16.0	0208727	27.0	34.0	160.0	50.0	10.0	141.0	M12x1	300.0	3.6
20.0	0208735	33.0	42.0	80.0	52.0	10.0	61.0	M16x1	420.0	2.9
20.0	0208736	33.0	42.0	130.0	52.0	10.0	111.0	M16x1	420.0	3.5
20.0	0208737	33.0	42.0	160.0	52.0	10.0	141.0	M16x1	420.0	4.0
25.0	0208740	44.0	53.0	100.0	58.0	10.0	81.0	M16x1	550.0	3.5
25.0	0208741	44.0	53.0	130.0	58.0	10.0	111.0	M16x1	550.0	4.5
25.0	0208742	44.0	53.0	160.0	58.0	10.0	141.0	M16x1	550.0	4.1
32.0	0208745	44.0	53.0	100.0	58.0	10.0	81.0	M16x1	600.0	3.4
32.0	0208746	44.0	53.0	130.0	58.0	10.0	111.0	M16x1	600.0	3.9
32.0	0208747	44.0	53.0	160.0	58.0	10.0	141.0	M16x1	600.0	4.4

- Can be supplied from stock

Design suitable for MQL operations available on request

Bore for data carrier as an option

Additional sizes and special designs available on request

* Run-out accuracy measured in the clamping diameter according to DIN 69882-8

- Posible suministro de existencias

Diseño apto para operaciones MQL disponible a pedido

Orificio para portador de datos como opción

Tamaños adicionales y diseños especiales disponibles a pedido

* Precisión de concentricidad medida en el diámetro de sujeción de acuerdo a DIN 69882-8