

Mounting Shanks CAT · Zancos de montaje CAT

ASME B5.50-2009



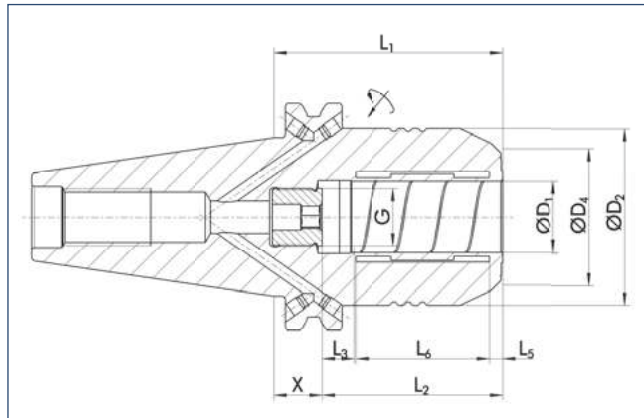
MOUNTING SHANKS CAT ZANCOS DE MONTAJE CAT

CAT	Page/Página
CAT 30	
TENDO	62
CAT 40	
TENDO	66
TRIBOS	76
SINO	84
CELSIO	88
CAT 50	
TENDO	92
TRIBOS	102
SINO	108
CELSIO	109

CAT

TENDO SDF CAT 30

short, rigid design
with axial length adjustment



TENDO SDF CAT 30

corto, diseño rígido
con ajuste de la longitud axial



Technical data

Datos técnicos

D ₁ [inch]	ID	D ₂ [mm]	D ₄ [mm]	X [mm]	L ₁ [mm]	L ₂ [mm]	L ₃ [mm]	L ₅ [mm]	L ₆ [mm]	G	M _{min} [Nm]	m [kg]
1/8"	≡											
3/16"	≡											
1/4"	≡											
5/16"	≡											
3/8"	≡											
1/2"	0207048	• 31.75	29.5	4.8	50.8	46.5	10.0	3.6	30.5	M5	95.0	0.5

- ≡ Additional sizes can be clamped with intermediate sleeves
- Can be supplied from stock

- 🔧 Design suitable for MQL operations available on request
- 📄 Bore for data carrier as an option

- 📄 Bore on form B are sealed with set screws
Additional sizes and special designs available on request

- ≡ Para sujetar con casquillos intermedios
- Posible suministro de existencias

- 🔧 Diseño apto para operaciones MQL disponible a pedido
- 📄 Orificio para portador de datos como opción

- 📄 Orificios en forma B sellados con tornillos de fijación
Tamaños adicionales y diseños especiales disponibles a pedido



Intermediate sleeves

see chapter accessories

Casquillos intermedios

consulte el capítulo sobre accesorios



Sleeve remover

see chapter accessories

Extractor de casquillos

consulte el capítulo sobre accesorios



Further accessories

see chapter accessories

Accesorios adicionales

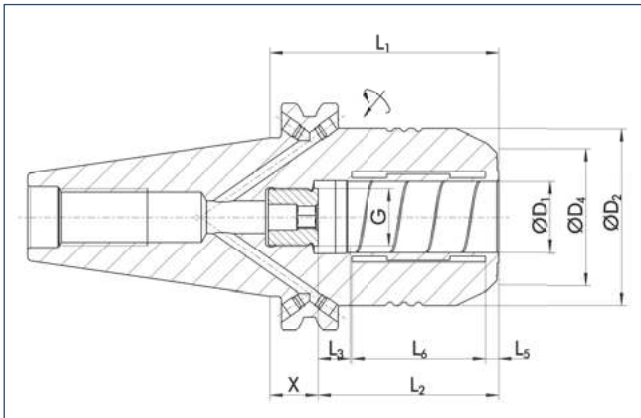
consulte el capítulo sobre accesorios

TENDO SDF CAT 30

short, rigid design
with axial length adjustment

TENDO SDF CAT 30

corto, diseño rígido
con ajuste de la longitud axial



CAT



Technical data

Datos técnicos

D ₁ [mm]	ID	D ₂ [mm]	D ₄ [mm]	X [mm]	L ₁ [mm]	L ₂ [mm]	L ₃ [mm]	L ₅ [mm]	L ₆ [mm]	G	M _{min} [Nm]	m [kg]
1.0												
2.0												
3.0												
4.0												
5.0												
6.0	≡											
8.0	≡											
10.0	≡											
12.0	0207045	• 31.75	29.5	4.8	50.8	46.0	10.0	3.6	30.5	M5	90.0	0.5

≡ Additional sizes can be clamped with intermediate sleeves
• Can be supplied from stock

🔧 Design suitable for MQL operations available on request
🔧 Bore for data carrier as an option

📄 Bore on form B are sealed with set screws
Additional sizes and special designs available on request

≡ Para sujetar con casquillos intermedios
• Posible suministro de existencias

🔧 Diseño apto para operaciones MQL disponible a pedido
🔧 Orificio para portador de datos como opción

📄 Orificios en forma B sellados con tornillos de fijación
Tamaños adicionales y diseños especiales disponibles a pedido

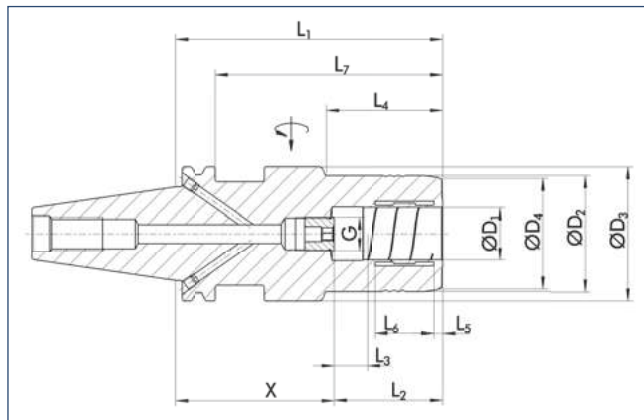
Intermediate sleeves
see chapter accessories
Casquillos intermedios
consulte el capítulo sobre accesorios

Sleeve remover
see chapter accessories
Extractor de casquillos
consulte el capítulo sobre accesorios

Further accessories
see chapter accessories
Accesorios adicionales
consulte el capítulo sobre accesorios

TENDO SDF-KS CAT 30

short, slim design
with axial length adjustment



TENDO SDF-KS CAT 30

corto, diseño delgado
con ajuste de la longitud axial



<math>< 0.003 \text{ mm}</math>



50000 min⁻¹



25000 min⁻¹



✓



✓



✓



✓



✓

Technical data

Datos técnicos

D ₁ [inch]	ID		D ₂ [mm]	D ₃ [mm]	D ₄ [mm]	X [mm]	L ₁ [mm]	L ₂ [mm]	L ₃ [mm]	L ₄ [mm]	L ₅ [mm]	L ₆ [mm]	L ₇ [mm]	G	M _{min} [Nm]	m [kg]
1/8"	≡															
3/16"	≡															
1/4"	≡															
5/16"	≡															
3/8"	≡															
7/16"	≡															
1/2"	0207055	•	32.0	44.45	28.5	55.6	101.6	46.0	10.0	48.5	3.6	30.5	82.55	M8	95.0	0.7
9/16"	≡															
5/8"	≡															
3/4"	0207056	•	42.0	44.45	37.5	50.6	101.6	51.0	10.0	48.5	3.7	37.8	82.55	M8	310.0	0.8

- ≡ Additional sizes can be clamped with intermediate sleeves
- Can be supplied from stock

- 🔧 Design suitable for MQL operations available on request
- 🔧 Bore for data carrier as an option

- 📄 Bore on form B are sealed with set screws
- Additional sizes and special designs available on request

- ≡ Para sujetar con casquillos intermedios
- Posible suministro de existencias

- 🔧 Diseño apto para operaciones MQL disponible a pedido
- 🔧 Orificio para portador de datos como opción

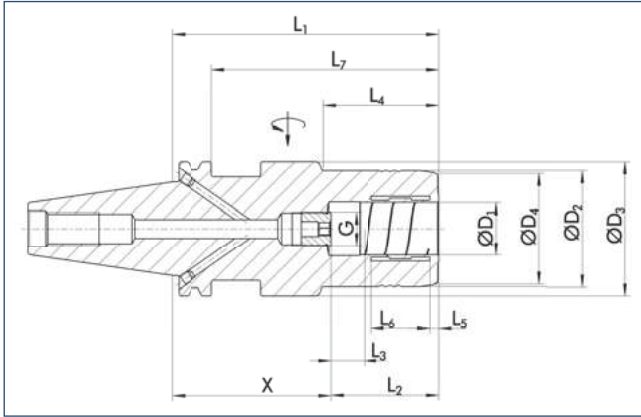
- 📄 Orificios en forma B sellados con tornillos de fijación
- Tamaños adicionales y diseños especiales disponibles a pedido

TENDO SDF-KS CAT 30

short, slim design
with axial length adjustment

TENDO SDF-KS CAT 30

corto, diseño delgado
con ajuste de la longitud axial



CAT



Technical data

Datos técnicos

D ₁ [mm]	ID	D ₂ [mm]	D ₃ [mm]	D ₄ [mm]	X [mm]	L ₁ [mm]	L ₂ [mm]	L ₃ [mm]	L ₄ [mm]	L ₅ [mm]	L ₆ [mm]	L ₇ [mm]	G	M _{min} [Nm]	m [kg]
1.0															
2.0															
3.0															
4.0															
5.0															
6.0	≡														
8.0	≡														
10.0	≡														
12.0	0207051	32.0	44.45	28.5	55.6	101.6	46.0	10.0	48.5	3.6	30.5	82.55	M8	90.0	0.7
20.0	0207052	42.0	44.45	37.5	50.6	101.6	51.0	10.0	48.5	3.7	37.8	82.55	M8	330.0	0.8

- ≡ Additional sizes can be clamped with intermediate sleeves
- Can be supplied from stock

- ≡ Para sujetar con casquillos intermedios
- Posible suministro de existencias

- 🔧 Design suitable for MQL operations available on request
- 🔧 Bore for data carrier as an option

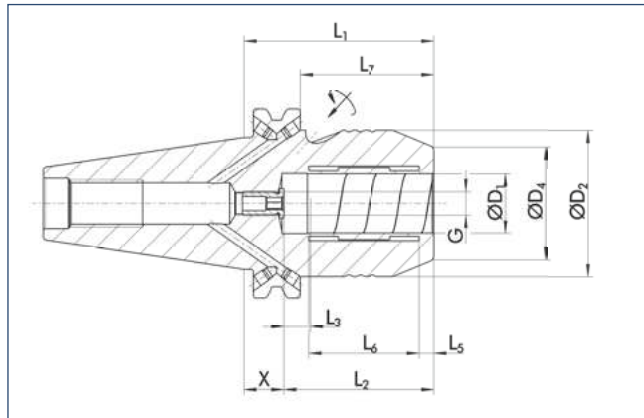
- 🔧 Diseño apto para operaciones MQL disponible a pedido
- 🔧 Orificio para portador de datos como opción

- 📄 Bore on form B are sealed with set screws
- Additional sizes and special designs available on request

- 📄 Orificios en forma B sellados con tornillos de fijación
- Tamaños adicionales y diseños especiales disponibles a pedido

TENDO SDF-E compact CAT 40

short, rigid design
with axial length adjustment



TENDO SDF-E compact CAT 40

corto, diseño rígido
con ajuste de la longitud axial



Technical data

Datos técnicos

D ₁ [inch]	ID	D ₂ [mm]	D ₄ [mm]	X [mm]	L ₁ [mm]	L ₂ [mm]	L ₃ [mm]	L ₅ [mm]	L ₆ [mm]	L ₇ [mm]	G [Nm]	M _{min} [kg]	m
1/8"	≡												
1/4"	≡												
5/16"	≡												
3/8"	≡												
7/16"	≡												
1/2"	≡												
9/16"	≡												
5/8"	≡												
3/4"	0206466	• 49.25	38.0	14.0	64.5	51.0	10.0	5.0	37.0	45.45	M8x1	520.0	1.3

≡ Additional sizes can be clamped with intermediate sleeves
• Can be supplied from stock

☑ Design suitable for MQL operations available on request
☑ Bore for data carrier as an option

ℹ Bore on form B are sealed with set screws

≡ Para sujetar con casquillos intermedios
• Posible suministro de existencias

☑ Diseño apto para operaciones MQL disponible a pedido
☑ Orificio para portador de datos como opción

ℹ Orificios en forma B sellados con tornillos de fijación



Intermediate sleeves
see chapter accessories

Casquillos intermedios
consulte el capítulo sobre accesorios



Sleeve remover
see chapter accessories

Extractor de casquillos
consulte el capítulo sobre accesorios



Further accessories
see chapter accessories

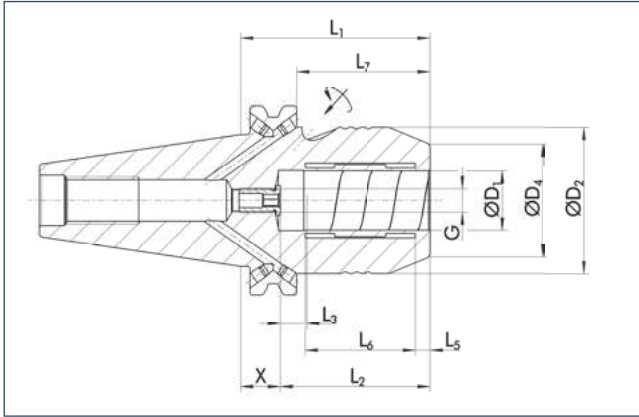
Accesorios adicionales
consulte el capítulo sobre accesorios

TENDO SDF-E compact CAT 40

short, rigid design
with axial length adjustment

TENDO SDF-E compact CAT 40

corto, diseño rígido
con ajuste de la longitud axial



CAT



Technical data

Datos técnicos

D ₁ [mm]	ID	D ₂ [mm]	D ₄ [mm]	X [mm]	L ₁ [mm]	L ₂ [mm]	L ₃ [mm]	L ₅ [mm]	L ₆ [mm]	L ₇ [mm]	G [Nm]	M _{min} [kg]	m
6.0	≡												
8.0	≡												
10.0	≡												
14.0	≡												
16.0	≡												
20.0	0206486	• 49.25	38.0	14.0	64.5	51.0	10.0	5.0	37.0	45.45	M8x1	520.0	1.3

- ≡ Additional sizes can be clamped with intermediate sleeves
- Can be supplied from stock

- ≡ Para sujetar con casquillos intermedios
- Posible suministro de existencias

- ☑ Design suitable for MQL operations available on request
- ☑ Bore for data carrier as an option

- ☑ Diseño apto para operaciones MQL disponible a pedido
- ☑ Orificio para portador de datos como opción

ⓘ Bores on form B are sealed with set screws

ⓘ Orificios en forma B sellados con tornillos de fijación

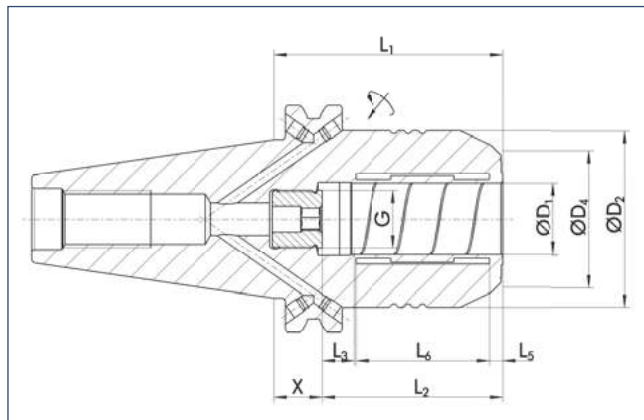
Intermediate sleeves
see chapter accessories
Casquillos intermedios
consulte el capítulo sobre accesorios

Sleeve remover
see chapter accessories
Extractor de casquillos
consulte el capítulo sobre accesorios

Further accessories
see chapter accessories
Accesorios adicionales
consulte el capítulo sobre accesorios

TENDO SDF CAT 40

short, rigid design
with axial length adjustment



TENDO SDF CAT 40

corto, diseño rígido
con ajuste de la longitud axial



Technical data

Datos técnicos

D ₁ [inch]	ID		D ₂ [mm]	D ₄ [mm]	X [mm]	L ₁ [mm]	L ₂ [mm]	L ₃ [mm]	L ₅ [mm]	L ₆ [mm]	G	M _{min} [Nm]	m [kg]
1/8"	≡												
3/16"	≡												
1/4"	0203932	•	44.5	26.0	27.0	64.0	37.0	10.0	3.6	20.5	M5	17.0	1.4
5/16"	≡												
3/8"	0203933	•	44.5	27.3	23.0	64.0	41.0	10.0	3.6	25.5	M6	45.0	1.4
7/16"	≡												
1/2"	0203934	•	44.5	28.6	18.0	64.0	46.0	10.0	3.6	30.5	M10x1	95.0	1.4
9/16"	≡												
5/8"	0203935	•	44.5	34.6	15.0	64.0	49.0	10.0	3.6	35.0	M10x1	185.0	1.4
3/4"	0203936	•	44.5	38.4	13.0	64.0	51.0	10.0	3.7	37.8	M10x1	310.0	1.5

- ≡ Additional sizes can be clamped with intermediate sleeves
- Can be supplied from stock

- ☑ Design suitable for MQL operations available on request
- ☑ Bore for data carrier as an option

- i Bore on form B are sealed with set screws
- Additional sizes and special designs available on request

- ≡ Para sujetar con casquillos intermedios
- Posible suministro de existencias

- ☑ Diseño apto para operaciones MQL disponible a pedido
- ☑ Orificio para portador de datos como opción

- i Orificios en forma B sellados con tornillos de fijación
- Tamaños adicionales y diseños especiales disponibles a pedido

Intermediate sleeves
see chapter accessories
Casquillos intermedios
consulte el capítulo sobre accesorios

Sleeve remover
see chapter accessories
Extractor de casquillos
consulte el capítulo sobre accesorios

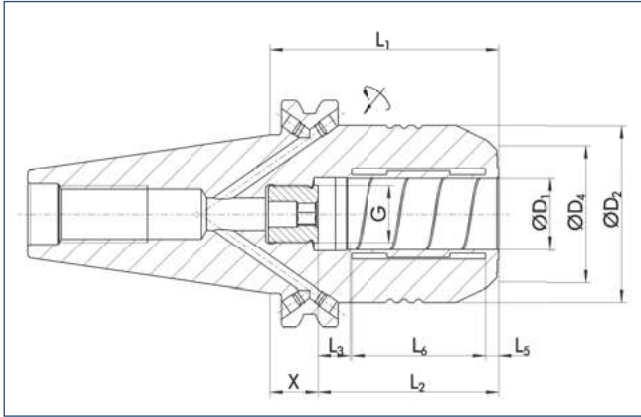
Further accessories
see chapter accessories
Accesorios adicionales
consulte el capítulo sobre accesorios

TENDO SDF CAT 40

short, rigid design
with axial length adjustment

TENDO SDF CAT 40

corto, diseño rígido
con ajuste de la longitud axial



CAT



Technical data

Datos técnicos

D ₁ [mm]	ID		D ₂ [mm]	D ₄ [mm]	X [mm]	L ₁ [mm]	L ₂ [mm]	L ₃ [mm]	L ₅ [mm]	L ₆ [mm]	G	M _{min} [Nm]	m [kg]
6.0	0203921	•	44.5	26.1	27.0	64.0	37.0	10.0	3.6	20.5	M5	16.0	1.4
10.0	0203923	•	44.5	27.3	23.0	64.0	41.0	10.0	3.6	25.5	M6	45.0	1.4
12.0	0203924	•	44.5	28.6	18.0	64.0	46.0	10.0	3.6	30.5	M10x1	90.0	1.4
14.0	0203929	•	44.5	30.6	18.0	64.0	46.0	10.0	3.6	30.5	M10x1	110.0	1.4
16.0	0203925	•	44.5	34.6	15.0	64.0	49.0	10.0	3.6	35.0	M10x1	185.0	1.4
20.0	0203930	•	44.5	38.4	13.0	64.0	51.0	10.0	3.7	37.8	M10x1	330.0	1.5

- Additional sizes can be clamped with intermediate sleeves
- Can be supplied from stock

- Para sujetar con casquillos intermedios
- Posible suministro de existencias

- Design suitable for MQL operations available on request
- Bore for data carrier as an option

- Diseño apto para operaciones MQL disponible a pedido
- Orificio para portador de datos como opción

- Bores on form B are sealed with set screws
- Additional sizes and special designs available on request

- Orificios en forma B sellados con tornillos de fijación
- Tamaños adicionales y diseños especiales disponibles a pedido



Intermediate sleeves

see chapter accessories

Casquillos intermedios

consulte el capítulo sobre accesorios



Sleeve remover

see chapter accessories

Extractor de casquillos

consulte el capítulo sobre accesorios



Further accessories

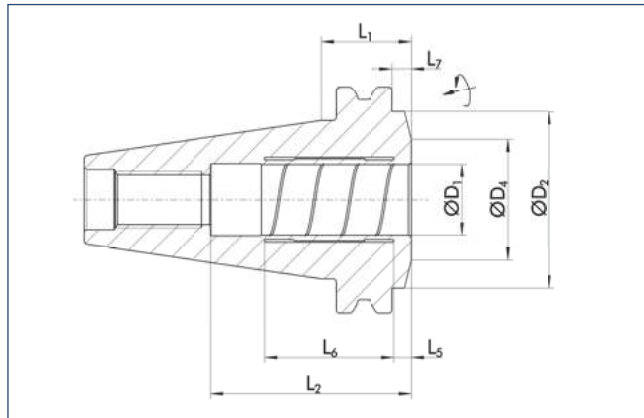
see chapter accessories

Accesorios adicionales

consulte el capítulo sobre accesorios

TENDO SDF-ES CAT 40

extra short design



TENDO SDF-ES CAT 40

diseño extra corto



<math>< 0.003 \text{ mm}</math>



50000 min⁻¹



✓



✓



✓



✓



✓



✓

Technical data

Datos técnicos

D ₁	ID	D ₂	D ₄	L ₁	L ₂	L ₅	L ₆	L ₇	M _{min}	m
[inch]		[mm]	[mm]	[mm]	[mm]	[mm]	[mm]	[mm]	[Nm]	[kg]
1/8"	≡									
3/16"	≡									
1/4"	≡									
5/16"	≡									
3/8"	≡									
3/4"	0204297	• 44.45	34.5	24.6	51.7	5.0	36.5	5.5	310.0	0.8

- ≡ Additional sizes can be clamped with intermediate sleeves
- Can be supplied from stock

GP Bore for data carrier as an option

i Additional sizes and special designs available on request

- ≡ Para sujetar con casquillos intermedios
- Posible suministro de existencias

GP Orificio para portador de datos como opción

i Tamaños adicionales y diseños especiales disponibles a pedido



Intermediate sleeves

see chapter accessories

Casquillos intermedios

consulte el capítulo sobre accesorios



Sleeve remover

see chapter accessories

Extractor de casquillos

consulte el capítulo sobre accesorios



Further accessories

see chapter accessories

Accesorios adicionales

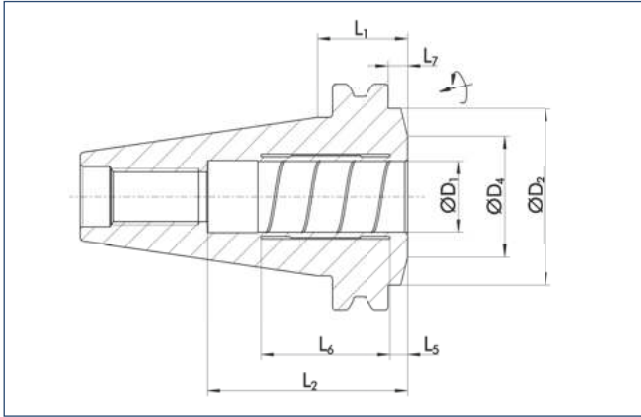
consulte el capítulo sobre accesorios

TENDO SDF-ES CAT 40

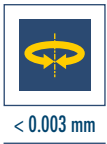
extra short design

TENDO SDF-ES CAT 40

diseño extra corto



CAT



Technical data

Datos técnicos

D ₁ [mm]	ID	D ₂ [mm]	D ₄ [mm]	L ₁ [mm]	L ₂ [mm]	L ₅ [mm]	L ₆ [mm]	L ₇ [mm]	M _{min} [Nm]	m [kg]
6.0	≡									
8.0	≡									
10.0	≡									
12.0	≡									
14.0	≡									
16.0	≡									
20.0	0204298	• 44.45	34.5	24.6	51.7	5.0	36.5	5.5	330.0	0.8

- ≡ Additional sizes can be clamped with intermediate sleeves
- Can be supplied from stock

- ≡ Para sujetar con casquillos intermedios
- Posible suministro de existencias

☞ Bore for data carrier as an option

☞ Orificio para portador de datos como opción

i Bores on form B are sealed with set screws

i Orificios en forma B sellados con tornillos de fijación



Intermediate sleeves

see chapter accessories

Casquillos intermedios

consulte el capítulo sobre accesorios



Sleeve remover

see chapter accessories

Extractor de casquillos

consulte el capítulo sobre accesorios



Further accessories

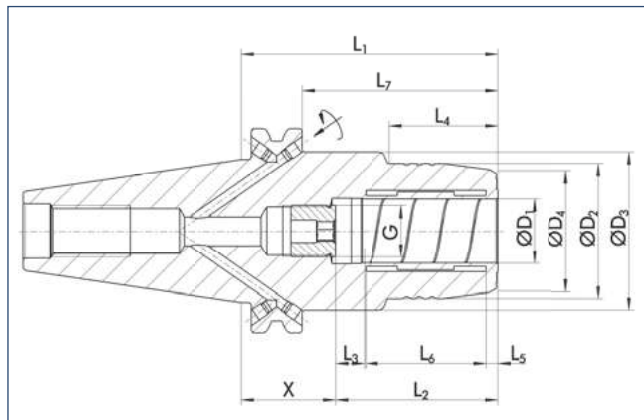
see chapter accessories

Accesorios adicionales

consulte el capítulo sobre accesorios

TENDO SDF-KS CAT 40

short, slim design
with axial length adjustment



TENDO SDF-KS CAT 40

corto, diseño delgado
con ajuste de la longitud axial



Technical data

Datos técnicos

D ₁ [inch]	ID		D ₂ [mm]	D ₃ [mm]	D ₄ [mm]	X [mm]	L ₁ [mm]	L ₂ [mm]	L ₃ [mm]	L ₄ [mm]	L ₅ [mm]	L ₆ [mm]	L ₇ [mm]	G	M _{min} [Nm]	m [kg]
1/8"	≡															
3/16"	≡															
1/4"	0203650	•	26.0	44.45	21.6	64.6	101.6	37.0	10.0	32.5	3.6	20.5	82.55	M5	17.0	1.9
5/16"	≡															
3/8"	0203652	•	30.0	44.45	25.6	60.6	101.6	41.0	10.0	41.5	3.6	25.5	82.55	M6	45.0	2.0
7/16"	≡															
1/2"	0203653	•	32.0	44.45	27.6	55.6	101.6	46.0	10.0	41.5	3.6	30.5	82.55	M10x1	95.0	2.0
9/16"	≡															
5/8"	0203654	•	38.0	44.45	33.6	52.6	101.6	49.0	10.0	49.5	3.6	35.0	82.55	M10x1	185.0	2.0
11/16"	≡															
3/4"	0203655	•	42.0	44.45	37.6	50.6	101.6	51.0	10.0	49.5	3.7	37.8	82.55	M10x1	310.0	2.2
13/16"	≡															
7/8"	≡															
15/16"	≡															
1"	0203656	•	55.0	63.0	52.1	44.6	101.6	57.0	10.0	66.5	4.2	42.3	82.55	M16x1	400.0	2.4
1 1/4"	0203657	•	63.0	80.0	60.6	40.6	101.6	61.0	10.0	66.5	4.2	47.7	82.55	M16x1	650.0	2.5

- ≡ Additional sizes can be clamped with intermediate sleeves
- Can be supplied from stock

- 🔧 Design suitable for MQL operations available on request
- 🔧 Bore for data carrier as an option

- 📄 Bore on form B are sealed with set screws
- Additional sizes and special designs available on request

- ≡ Se puede sujetar con casquillos intermedios, posibles dimensiones intermedias
- Posible suministro de existencias

- 🔧 Diseño apto para operaciones MQL disponible a pedido
- 🔧 Orificio para portador de datos como opción

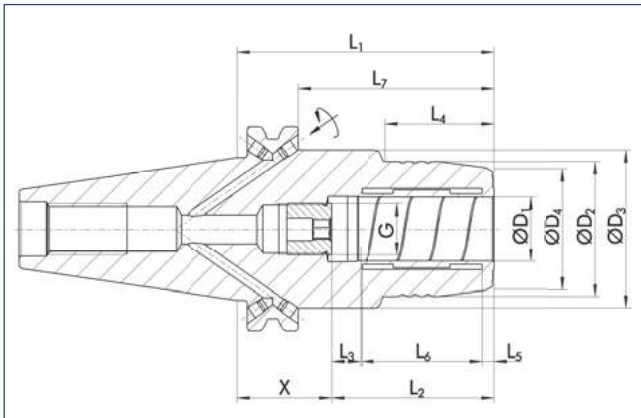
- 📄 Orificios en forma B sellados con tornillos de fijación
- Tamaños adicionales y diseños especiales disponibles a pedido

TENDO SDF-KS CAT 40

short, slim design
with axial length adjustment

TENDO SDF-KS CAT 40

corto, diseño delgado
con ajuste de la longitud axial



CAT



Technical data

Datos técnicos

D ₁ [mm]	ID		D ₂ [mm]	D ₃ [mm]	D ₄ [mm]	X [mm]	L ₁ [mm]	L ₂ [mm]	L ₃ [mm]	L ₄ [mm]	L ₅ [mm]	L ₆ [mm]	L ₇ [mm]	G	M _{min} [Nm]	m [kg]
1.0																
2.0																
3.0																
4.0																
5.0																
6.0	0203661	•	26.0	44.45	21.6	64.6	101.6	37.0	10.0	32.5	3.6	20.5	82.55	M5	16.0	1.9
10.0	0203663	•	30.0	44.45	25.6	60.6	101.6	41.0	10.0	41.5	3.6	25.5	82.55	M6	45.0	2.0
12.0	0203664	•	32.0	44.45	27.7	55.6	101.6	46.0	10.0	41.5	3.6	30.5	82.55	M10x1	90.0	2.0
14.0	0203669	•	34.0	44.45	31.5	55.6	101.6	46.0	10.0	49.5	3.6	30.5	82.55	M10x1	110.0	2.0
16.0	0203665	•	38.0	44.45	33.6	52.6	101.6	49.0	10.0	49.5	3.6	35.0	82.55	M10x1	185.0	2.2
18.0	☰															
20.0	0203666	•	42.0	44.45	37.7	50.6	101.6	51.0	10.0	49.5	3.7	37.8	82.55	M16x1	330.0	2.2
25.0	0203667	•	55.0	63.0	52.7	44.6	101.6	57.0	10.0	66.0	4.2	42.3	82.55	M16x1	400.0	2.4
32.0	0203668	•	63.0	80.0	60.0	40.6	101.6	61.0	10.0	66.0	4.2	47.7	82.55	M16x1	650.0	2.5

- ☰ Additional sizes can be clamped with intermediate sleeves
- Can be supplied from stock

- ☰ Se puede sujetar con casquillos intermedios, posibles dimensiones intermedias
- Posible suministro de existencias

- 🔧 Design suitable for MQL operations available on request
- 🔧 Bore for data carrier as an option

- 🔧 Diseño apto para operaciones MQL disponible a pedido
- 🔧 Orificio para portador de datos como opción

- 📄 Bores on form B are sealed with set screws
- Additional sizes and special designs available on request

- 📄 Orificios en forma B sellados con tornillos de fijación
- Tamaños adicionales y diseños especiales disponibles a pedido

Intermediate sleeves
see chapter accessories

Casquillos intermedios
consulte el capítulo sobre accesorios

Sleeve remover
see chapter accessories

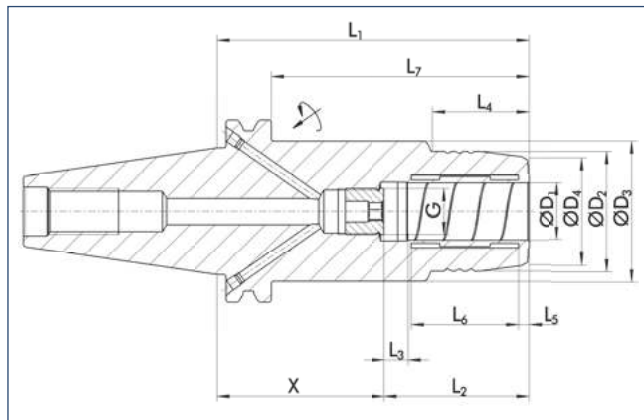
Extractor de casquillos
consulte el capítulo sobre accesorios

Further accessories
see chapter accessories

Accesorios adicionales
consulte el capítulo sobre accesorios

TENDO SDF-LS CAT 40

long, slim design
with axial length adjustment



TENDO SDF-LS CAT 40

largo, diseño delgado
con ajuste de la longitud axial



Technical data

Datos técnicos

D ₁ [inch]	ID		D ₂ [mm]	D ₃ [mm]	D ₄ [mm]	X [mm]	L ₁ [mm]	L ₂ [mm]	L ₃ [mm]	L ₄ [mm]	L ₅ [mm]	L ₆ [mm]	L ₇ [mm]	G	M _{min} [Nm]	m [kg]
1/8"	≡															
3/16"	≡															
1/4"	0203670	•	26.0	44.45	21.7	115.4	152.4	37.0	10.0	32.5	3.6	20.5	133.3	M5	17.0	2.4
5/16"	≡															
3/8"	0203672	•	30.0	44.45	25.7	111.4	152.4	41.0	10.0	41.5	3.6	25.5	133.3	M6	45.0	2.4
7/16"	≡															
1/2"	0203673	•	32.0	44.45	27.7	106.4	152.4	46.0	10.0	41.5	3.6	30.5	133.3	M10x1	95.0	2.4
9/16"	≡															
5/8"	0203674	•	38.0	44.45	33.7	103.4	152.4	49.0	10.0	49.5	3.6	35.0	133.3	M10x1	185.0	2.5
3/4"	0203675	•	42.0	44.45	37.7	101.4	152.4	51.0	10.0	49.5	3.7	37.8	133.3	M10x1	310.0	2.5
1"	0203676	•	55.0	63.0	52.7	95.4	152.4	57.0	10.0	40.5	4.2	42.3	133.3	M16x1	400.0	3.0

- ≡ Additional sizes can be clamped with intermediate sleeves
- Can be supplied from stock

- 🔧 Design suitable for MQL operations available on request
- 🔧 Bore for data carrier as an option

- 📄 Bore on form B are sealed with set screws
Additional sizes and special designs available on request

- ≡ Se puede sujetar con casquillos intermedios, posibles dimensiones intermedias
- Posible suministro de existencias

- 🔧 Diseño apto para operaciones MQL disponible a pedido
- 🔧 Orificio para portador de datos como opción

- 📄 Orificios en forma B sellados con tornillos de fijación
Tamaños adicionales y diseños especiales disponibles a pedido

Intermediate sleeves
see chapter accessories
Casquillos intermedios
consulte el capítulo sobre accesorios

Sleeve remover
see chapter accessories
Extractor de casquillos
consulte el capítulo sobre accesorios

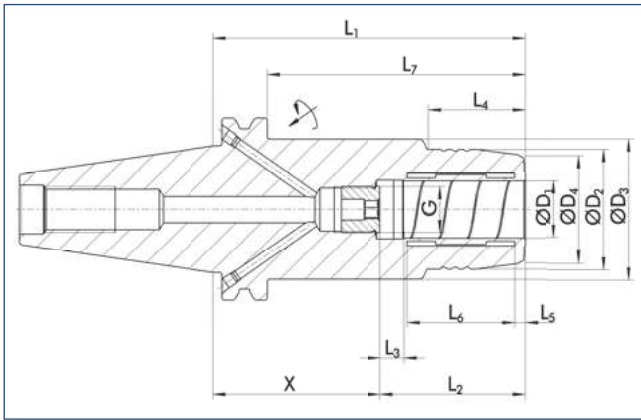
Further accessories
see chapter accessories
Accesorios adicionales
consulte el capítulo sobre accesorios

TENDO SDF-LS CAT 40

long, slim design
with axial length adjustment

TENDO SDF-LS CAT 40

largo, diseño delgado
con ajuste de la longitud axial



CAT



Technical data

Datos técnicos

D ₁ [mm]	ID		D ₂ [mm]	D ₃ [mm]	D ₄ [mm]	X [mm]	L ₁ [mm]	L ₂ [mm]	L ₃ [mm]	L ₄ [mm]	L ₅ [mm]	L ₆ [mm]	L ₇ [mm]	G	M _{min} [Nm]	m [kg]
1.0	≡															
2.0	≡															
3.0	≡															
4.0	≡															
5.0	≡															
6.0	0203681	•	26.0	44.45	21.7	115.4	152.4	37.0	10.0	32.5	3.6	20.5	133.3	M5	16.0	2.4
8.0	0203682	•	30.0	44.45	25.7		152.4	37.0		35.5	3.6	20.5	133.3	M6	23.0	2.4
10.0	0203683	•	30.0	44.45	25.7	111.4	152.4	41.0	10.0	41.5	3.6	25.5	133.3	M6	45.0	2.4
12.0	0203684	•	32.0	44.45	27.7	106.4	152.4	46.0	10.0	41.5	3.6	30.5	133.3	M10x1	90.0	2.4
14.0	0203689	•	34.0	44.45	31.5	106.4	152.4	46.0	10.0	49.5	3.6	30.5	133.3	M10x1	110.0	2.4
16.0	0203685	•	38.0	44.45	33.7	103.4	152.4	49.0	10.0	49.5	3.6	35.0	133.3	M10x1	185.0	2.5
20.0	0203686	•	42.0	44.45	37.7	101.4	152.4	51.0	10.0	49.5	3.7	37.8	133.3	M10x1	330.0	2.5
25.0	0203687	•	55.0	63.0	57.7	95.4	152.4	57.0	10.0	117.3	4.2	42.3	133.3	M16x1	400.0	3.0

≡ Additional sizes can be clamped with intermediate sleeves
• Can be supplied from stock

≡ Se puede sujetar con casquillos intermedios, posibles dimensiones intermedias
• Posible suministro de existencias

🔧 Design suitable for MQL operations available on request
🔧 Bore for data carrier as an option

🔧 Diseño apto para operaciones MQL disponible a pedido
🔧 Orificio para portador de datos como opción

📄 Bores on form B are sealed with set screws
Additional sizes and special designs available on request

📄 Orificios en forma B sellados con tornillos de fijación
Tamaños adicionales y diseños especiales disponibles a pedido

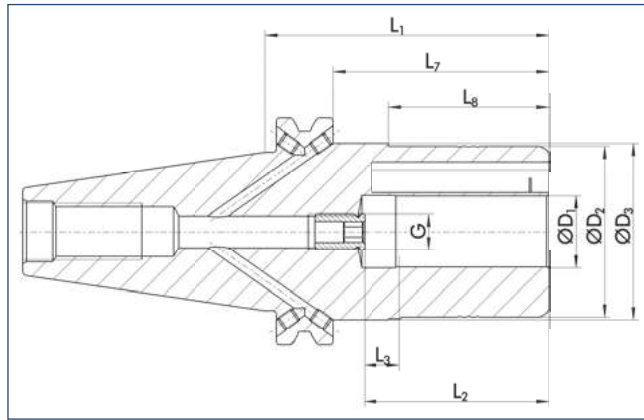
Intermediate sleeves
see chapter accessories
Casquillos intermedios
consulte el capítulo sobre accesorios

Sleeve remover
see chapter accessories
Extractor de casquillos
consulte el capítulo sobre accesorios

Further accessories
see chapter accessories
Accesorios adicionales
consulte el capítulo sobre accesorios

TRIBOS SPF-R CAT 40

short, rigid design
with axial length adjustment



TRIBOS SPF-R CAT 40

corto, diseño rígido
con ajuste de la longitud axial



Technical data

Datos técnicos

D ₁ [inch]	ID		D ₂ [mm]	D ₃ [mm]	L ₁ [mm]	L ₂ [mm]	L ₃ [mm]	L ₇ [mm]	L ₈ [mm]	G	M _{min} [Nm]	m [kg]	SRE ID
1/8"	≡												
3/16"	≡												
1/4"	≡												
5/16"	≡												
3/8"	≡												
7/16"	≡												
1/2"	0233752	•	48.0	50.00	85.0	47.0	10.0	66.0	45.0	M8x1	50.0	1.1	0201984
9/16"	≡												
5/8"	≡												
3/4"	0233754	•	48.0	50.00	85.0	52.0	10.0	66.0	45.0	M10x1	200.0	1.2	0201984

- ≡ Additional sizes can be clamped with intermediate sleeves
- Can be supplied from stock

- ☑ Design suitable for MQL operations available on request
- ☑ Bore for data carrier as an option

- i Bore on form B are sealed with set screws
- Additional sizes and special designs available on request

- ≡ Para sujetar con casquillos intermedios
- Posible suministro de existencias

- ☑ Diseño apto para operaciones MQL disponible a pedido
- ☑ Orificio para portador de datos como opción

- i Orificios en forma B sellados con tornillos de fijación
- Tamaños adicionales y diseños especiales disponibles a pedido



Tool extensions
see chapter extensions

Extensiones de herramientas
consulte el capítulo sobre extensiones



Clamping devices
see chapter accessories

Dispositivos de sujeción
consulte el capítulo sobre accesorios



Reduction inserts
see chapter accessories

Insertos de reducción
consulte el capítulo sobre accesorios



Length measuring devices
see chapter accessories

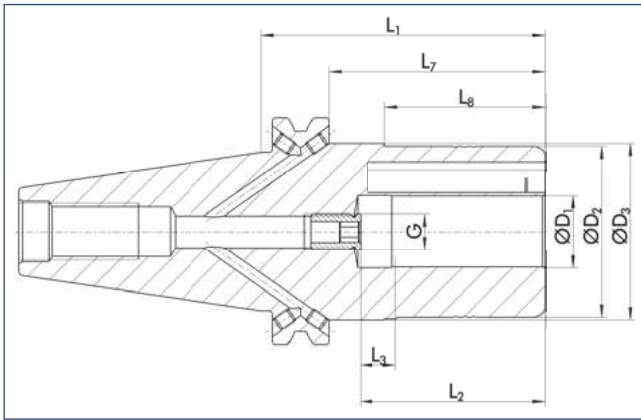
Disp. de medición de la longitud
consulte el capítulo sobre accesorios

TRIBOS SPF-R CAT 40

short, rigid design
with axial length adjustment

TRIBOS SPF-R CAT 40

corto, diseño rígido
con ajuste de la longitud axial



CAT



Technical data

Datos técnicos

D ₁ [mm]	ID		D ₂ [mm]	D ₃ [mm]	L ₁ [mm]	L ₂ [mm]	L ₃ [mm]	L ₇ [mm]	L ₈ [mm]	G	M _{min} [Nm]	m [kg]	SRE ID
6.0	≡												
8.0	≡												
10.0	≡												
12.0	0235884	•	42.0	44.45	85.0	47.0	10.0	66.0	45.0	M8x1	40.0	0.95	0201983
14.0	≡												
16.0	≡												
18.0	≡												
20.0	0235886	•	48.0	50.00	85.0	52.0	10.0	66.0	45.0	M10x1	240.0	1.09	0201984

- ≡ Additional sizes can be clamped with intermediate sleeves
- Can be supplied from stock

- ≡ Para sujetar con casquillos intermedios
- Posible suministro de existencias

- 🔧 Design suitable for MQL operations available on request
- 📄 Bore for data carrier as an option

- 🔧 Diseño apto para operaciones MQL disponible a pedido
- 📄 Orificio para portador de datos como opción

- 📄 Bore on form B are sealed with set screws
- Additional sizes and special designs available on request

- 📄 Orificios en forma B sellados con tornillos de fijación
- Tamaños adicionales y diseños especiales disponibles a pedido



Tool extensions
see chapter extensions

Extensiones de herramientas
consulte el capítulo sobre extensiones



Clamping devices
see chapter accessories

Dispositivos de sujeción
consulte el capítulo sobre accesorios



Reduction inserts
see chapter accessories

Insertos de reducción
consulte el capítulo sobre accesorios

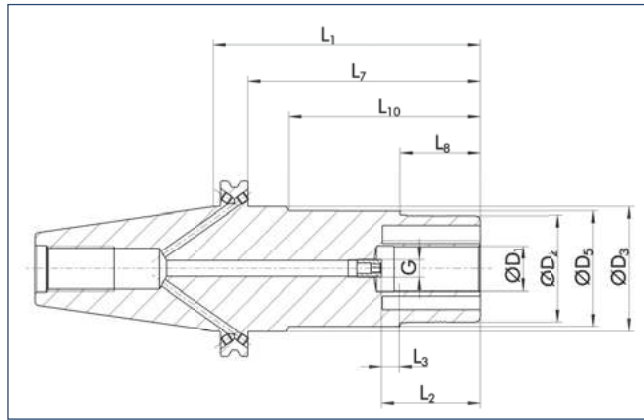


Length measuring devices
see chapter accessories

Disp. de medición de la longitud
consulte el capítulo sobre accesorios

TRIBOS SPF-R CAT 40 L₁=150

long, rigid design
with axial length adjustment



TRIBOS SPF-R CAT 40 L₁=150

largo, diseño rígido
con ajuste de la longitud axial



Technical data

Datos técnicos

D ₁	D ₂	D ₃	D ₅	L ₁	L ₂	L ₃	L ₇	L ₈	L ₁₀	G	M _{min}	m	SRE	
[inch]	ID	[mm]	[mm]	[mm]	[mm]	[mm]	[mm]	[mm]	[mm]		[Nm]	[kg]	ID	
1/8"	≡													
3/16"	≡													
1/4"	≡													
5/16"	≡													
3/8"	≡													
7/16"	≡													
1/2"	0235044	48.0	44.45	50.5	150.0	47.0	10.0	131.0	45.0	115.0	M8x1	45.0	2.0	0201984
9/16"	≡													
5/8"	≡													
3/4"	0235046	48.0	44.45	50.5	150.0	52.0	10.0	131.0	45.0	115.0	M10x1	200.0	2.0	0201984

- ≡ Additional sizes can be clamped with intermediate sleeves
- Can be supplied from stock

- ☑ Design suitable for MQL operations available on request
- ☑ Bore for data carrier as an option

- i Bore on form B are sealed with set screws
- Additional sizes and special designs available on request

- ≡ Para sujetar con casquillos intermedios
- Posible suministro de existencias

- ☑ Diseño apto para operaciones MQL disponible a pedido
- ☑ Orificio para portador de datos como opción

- i Orificios en forma B sellados con tornillos de fijación
- Tamaños adicionales y diseños especiales disponibles a pedido



Tool extensions
see chapter extensions

Extensiones de herramientas
consulte el capítulo sobre extensiones



Clamping devices
see chapter accessories

Dispositivos de sujeción
consulte el capítulo sobre accesorios



Reduction inserts
see chapter accessories

Insertos de reducción
consulte el capítulo sobre accesorios

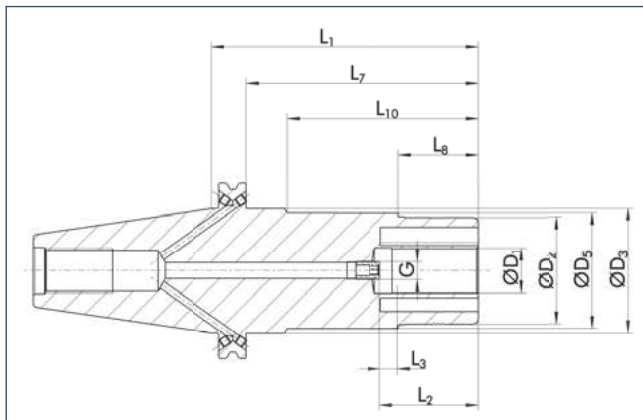


Length measuring devices
see chapter accessories

Disp. de medición de la longitud
consulte el capítulo sobre accesorios

TRIBOS SPF-R CAT 40 L₁=150

long, rigid design
with axial length adjustment



TRIBOS SPF-R CAT 40 L₁=150

largo, diseño rígido
con ajuste de la longitud axial



CAT



Technical data

Datos técnicos

D ₁ [mm]	ID	D ₂ [mm]	D ₃ [mm]	D ₅ [mm]	L ₁ [mm]	L ₂ [mm]	L ₃ [mm]	L ₇ [mm]	L ₈ [mm]	L ₁₀ [mm]	G	M _{min} [Nm]	m [kg]	SRE ID
6.0	≡													
8.0	≡													
10.0	≡													
12.0	0233894	42.0	44.45		150.0	47.0	10.0	131.0	45.0		M8x1	40.0	1.81	0201983
14.0	≡													
16.0	≡													
18.0	≡													
20.0	0233896	48.0	44.45	50.5	150.0	52.0	10.0	131.0	45.0	115.0	M10x1	240.0	2.0	0201984
25.0	≡													
32.0	0233898	67.0	69.50	69.5	150.0	61.0	10.0	131.0	88.0	115.0	M10x1	350.0	2.63	0201922

≡ Additional sizes can be clamped with intermediate sleeves
• Can be supplied from stock

☑ Design suitable for MQL operations available on request
☑ Bore for data carrier as an option

ⓘ Bores on form B are sealed with set screws
Additional sizes and special designs available on request

≡ Para sujetar con casquillos intermedios
• Posible suministro de existencias

☑ Diseño apto para operaciones MQL disponible a pedido
☑ Orificio para portador de datos como opción

ⓘ Orificios en forma B sellados con tornillos de fijación
Tamaños adicionales y diseños especiales disponibles a pedido



Tool extensions
see chapter extensions

Extensiones de herramientas
consulte el capítulo sobre extensiones



Clamping devices
see chapter accessories

Dispositivos de sujeción
consulte el capítulo sobre accesorios



Reduction inserts
see chapter accessories

Insertos de reducción
consulte el capítulo sobre accesorios

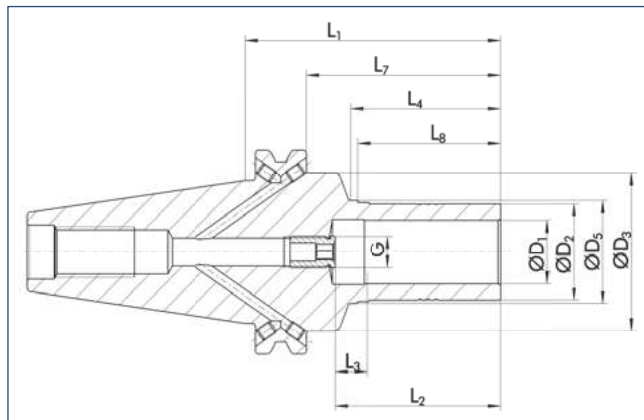


Length measuring devices
see chapter accessories

Disp. de medición de la longitud
consulte el capítulo sobre accesorios

TRIBOS SPF-S CAT 40

short, slim design
with axial length adjustment



TRIBOS SPF-S CAT 40

corto, diseño delgado
con ajuste de la longitud axial



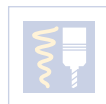
< 0.003 mm



25000 min⁻¹



G 2.5



Technical data

Datos técnicos

D ₁	ID		D ₂	D ₃	D ₅	L ₁	L ₂	L ₃	L ₄	L ₇	L ₈	G	M _{min}	m	SRE
[inch]			[mm]	[mm]	[mm]	[mm]	[mm]	[mm]	[mm]	[mm]	[mm]		[Nm]	[kg]	ID
1/8"	≡														
3/16"	≡														
1/4"	0205360	•	10.3	44.45	13.1	90.0	37.0	10.0	37.0	71.0	35.0	M5	6.0	0.9	0201988
5/16"	≡														
3/8"	≡														
7/16"	≡														
1/2"	0205363	•	20.0	44.45	22.1	90.0	47.0	10.0	47.0	71.0	45.0	M8x1	40.0	1.0	0201991
9/16"	≡														
5/8"	≡														
3/4"	0205365	•	29.0	44.45	31.1	90.0	52.0	10.0	47.0	71.0	45.0	M10x1	120.0	1.05	0201992

- ≡ Additional sizes can be clamped with intermediate sleeves
- Can be supplied from stock

- ☑ Design suitable for MQL operations available on request
- ☑ Bore for data carrier as an option

- ℹ Optimal for light machine cutting – consider radial forces
- Bores on form B are sealed with set screws
- Additional sizes and special designs available on request

- ≡ Para sujetar con casquillos intermedios
- Posible suministro de existencias

- ☑ Diseño apto para operaciones MQL disponible a pedido
- ☑ Orificio para portador de datos como opción

- ℹ Óptimo para corte con máquinas ligeras; considera fuerzas radiales
- Orificios en forma B sellados con tornillos de fijación
- Tamaños adicionales y diseños especiales disponibles a pedido



Tool extensions

see chapter extensions

Extensiones de herramientas
consulte el capítulo sobre extensiones



Clamping devices

see chapter accessories

Dispositivos de sujeción
consulte el capítulo sobre accesorios



Reduction inserts

see chapter accessories

Insertos de reducción
consulte el capítulo sobre accesorios



Length measuring devices

see chapter accessories

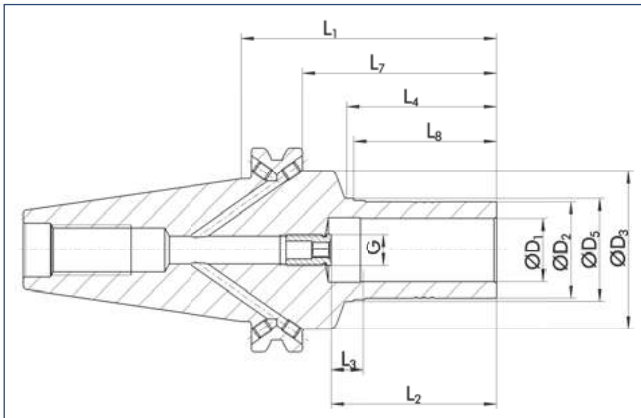
Disp. de medición de la longitud
consulte el capítulo sobre accesorios

TRIBOS SPF-S CAT 40

short, slim design
with axial length adjustment

TRIBOS SPF-S CAT 40

corto, diseño delgado
con ajuste de la longitud axial



CAT



Technical data

Datos técnicos

D ₁ [mm]	ID		D ₂ [mm]	D ₃ [mm]	D ₅ [mm]	L ₁ [mm]	L ₂ [mm]	L ₃ [mm]	L ₄ [mm]	L ₇ [mm]	L ₈ [mm]	G	M _{min} [Nm]	m [kg]	SRE ID
6.0	0215911	•	10.0	44.45	13.1	90.0	37.0	10.0	37.0	71.0	35.0	M5	5.0	0.9	0201972
8.0	≡														
10.0	≡														
12.0	0215914	•	19.0	44.45	21.1	90.0	47.0	10.0	47.0	71.0	45.0	M8x1	30.0	1.0	0201975
14.0	≡														
16.0	≡														
18.0	≡														
20.0	0215916	•	30.0	44.45	32.1	90.0	52.0	10.0	47.0	71.0	45.0	M10x1	150.0	1.05	0201981
25.0	0215917	•	36.0	44.45	38.1	90.0	57.0	10.0	47.0	71.0	45.0	M10x1	200.0	1.1	0201987
32.0	0215918	•	45.0	44.45	48.1	90.0	61.0	10.0	55.0	71.0	55.0	M10x1	280.0	1.12	0201998

- ≡ Additional sizes can be clamped with intermediate sleeves
- Can be supplied from stock

- ≡ Para sujetar con casquillos intermedios
- Posible suministro de existencias

- ☑ Design suitable for MQL operations available on request
- ☑ Bore for data carrier as an option

- ☑ Diseño apto para operaciones MQL disponible a pedido
- ☑ Orificio para portador de datos como opción

- i Optimal for light machine cutting — consider radial forces
Bores on form B are sealed with set screws
Additional sizes and special designs available on request

- i Óptimo para corte con máquinas ligeras; considera fuerzas radiales
Orificios en forma B sellados con tornillos de fijación
Tamaños adicionales y diseños especiales disponibles a pedido



Tool extensions
see chapter extensions

Extensiones de herramientas
consulte el capítulo sobre extensiones



Clamping devices
see chapter accessories

Dispositivos de sujeción
consulte el capítulo sobre accesorios



Reduction inserts
see chapter accessories

Insertos de reducción
consulte el capítulo sobre accesorios

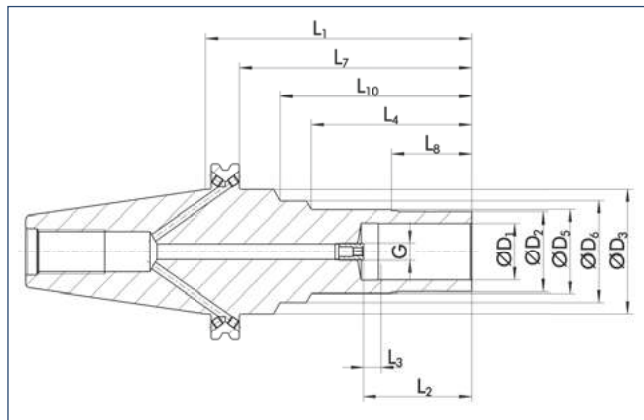


Length measuring devices
see chapter accessories

Disp. de medición de la longitud
consulte el capítulo sobre accesorios

TRIBOS SPF-S CAT 40 L₁=150

long, slim design
with axial length adjustment



TRIBOS SPF-S CAT 40 L₁=150

largo, diseño delgado
con ajuste de la longitud axial



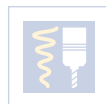
< 0.003 mm



25000 min⁻¹



25000 min⁻¹



Technical data

Datos técnicos

D ₁	ID	D ₂	D ₃	D ₅	D ₆	L ₁	L ₂	L ₃	L ₄	L ₇	L ₈	L ₁₀	G	M _{min}	m	SRE	
[inch]	ID	[mm]	[mm]	[mm]	[mm]	[mm]	[mm]	[mm]	[mm]	[mm]	[mm]	[mm]		[Nm]	[kg]	ID	
1/8"	≡																
3/16"	≡																
1/4"	≡																
5/16"	≡																
3/8"	≡																
7/16"	≡																
1/2"	0205504	•	20.0	44.45	22.5	36.0	150.0	47.0	10.0	82.0	131.0	45.0	110.0	M8x1	40.0	1.54	0201991
9/16"	≡																
5/8"	≡																
3/4"	0205506	•	29.0	44.45	32.5	36.0	150.0	52.0	10.0	82.0	131.0	45.0	110.0	M10x1	120.0	1.59	0201992

- ≡ Additional sizes can be clamped with intermediate sleeves
- Can be supplied from stock

- 🔧 Design suitable for MQL operations available on request
- 📄 Bore for data carrier as an option

- 📄 Optimal for light machine cutting — consider radial forces
- Bores on form B are sealed with set screws
- Additional sizes and special designs available on request

- ≡ Para sujetar con casquillos intermedios
- Posible suministro de existencias

- 🔧 Diseño apto para operaciones MQL disponible a pedido
- 📄 Orificio para portador de datos como opción

- 📄 Óptimo para corte con máquinas ligeras; considera fuerzas radiales
- Orificios en forma B sellados con tornillos de fijación
- Tamaños adicionales y diseños especiales disponibles a pedido



Tool extensions

see chapter extensions

Extensiones de herramientas
consulte el capítulo sobre extensiones



Clamping devices

see chapter accessories

Dispositivos de sujeción
consulte el capítulo sobre accesorios



Reduction inserts

see chapter accessories

Insertos de reducción
consulte el capítulo sobre accesorios



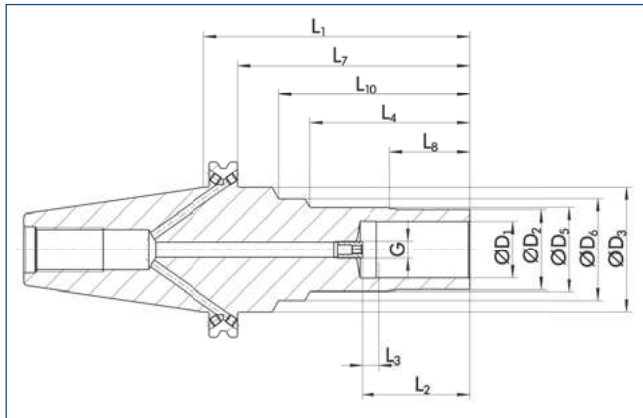
Length measuring devices

see chapter accessories

Disp. de medición de la longitud
consulte el capítulo sobre accesorios

TRIBOS SPF-S CAT 40 L₁=150

long, slim design
with axial length adjustment



TRIBOS SPF-S CAT 40 L₁=150

largo, diseño delgado
con ajuste de la longitud axial



CAT



Technical data

Datos técnicos

D ₁ [mm]	ID		D ₂ [mm]	D ₃ [mm]	D ₅ [mm]	D ₆ [mm]	L ₁ [mm]	L ₂ [mm]	L ₃ [mm]	L ₄ [mm]	L ₇ [mm]	L ₈ [mm]	L ₁₀ [mm]	G	M _{min} [Nm]	m [kg]	SRE ID
6.0	≡																
8.0	≡																
10.0	≡																
12.0	0205934	•	19.0	44.45	22.5	36.0	150.0	47.0	10.0	82.0	131.0	45.0	110.0	M8x1	30.0	1.54	0201975
14.0	≡																
16.0	≡																
18.0	≡																
20.0	0205936	•	30.0	44.45	32.5	36.0	150.0	52.0	10.0	82.0	131.0	45.0	110.0	M10x1	150.0	1.59	0201981

- ≡ Additional sizes can be clamped with intermediate sleeves
- Can be supplied from stock

- ≡ Para sujetar con casquillos intermedios
- Posible suministro de existencias

- 🔧 Design suitable for MQL operations available on request
- 🔧 Bore for data carrier as an option

- 🔧 Diseño apto para operaciones MQL disponible a pedido
- 🔧 Orificio para portador de datos como opción

- 📄 Optimal for light machine cutting – consider radial forces
Bores on form B are sealed with set screws
Additional sizes and special designs available on request

- 📄 Óptimo para corte con máquinas ligeras; considera fuerzas radiales
Orificios en forma B sellados con tornillos de fijación
Tamaños adicionales y diseños especiales disponibles a pedido



Tool extensions
see chapter extensions

Extensiones de herramientas
consulte el capítulo sobre extensiones



Clamping devices
see chapter accessories

Dispositivos de sujeción
consulte el capítulo sobre accesorios



Reduction inserts
see chapter accessories

Insertos de reducción
consulte el capítulo sobre accesorios

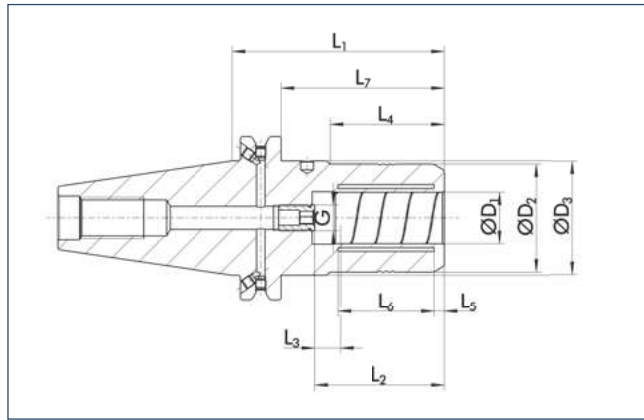


Length measuring devices
see chapter accessories

Disp. de medición de la longitud
consulte el capítulo sobre accesorios

SINO-R CAT 40

with axial length adjustment



SINO-R CAT 40

con ajuste de la longitud axial



Technical data

Datos técnicos

D ₁	ID	D ₂	D ₃	L ₁	L ₂	L ₃	L ₄	L ₅	L ₆	L ₇	G	M _{min}	m
[inch]		[mm]	[mm]	[mm]	[mm]	[mm]	[mm]	[mm]	[mm]	[mm]		[Nm]	[kg]
1/8"	≡												
3/16"	≡												
1/4"	≡												
5/16"	≡												
3/8"	≡												
1/2"	0209612	• 39.0	44.9	73.0	46.0	10.0	34.0	5.0	32.0	54.0	M8x1	150.0	1.25

- ≡ Additional sizes can be clamped with intermediate sleeves
- Can be supplied from stock

Bore for data carrier as an option

Optimal for heavy duty milling
Additional sizes and special designs available on request

- ≡ Para sujetar con casquillos intermedios
- Posible suministro de existencias

Orificio para portador de datos como opción

Óptimo para fresado de trabajo pesado
Tamaños adicionales y diseños especiales disponibles a pedido



Intermediate sleeves
see chapter accessories

Casquillos intermedios
consulte el capítulo sobre accesorios



Spanner wrenches
see chapter accessories

Llaves de apriete
consulte el capítulo sobre accesorios



"C"-spanners
see chapter accessories

Llaves de gancho
consulte el capítulo sobre accesorios



Sleeve remover
see chapter accessories

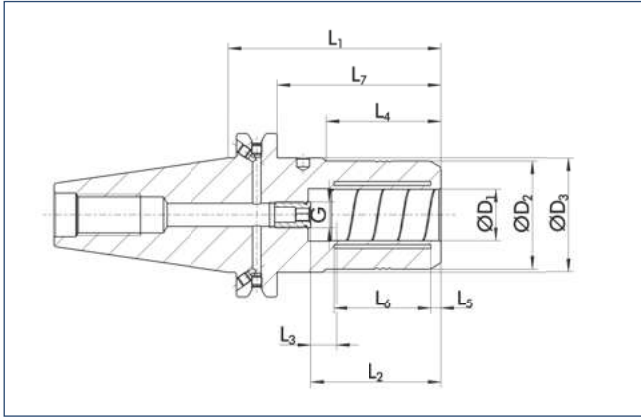
Extractor de casquillos
consulte el capítulo sobre accesorios

SINO-R CAT 40

with axial length adjustment

SINO-R CAT 40

con ajuste de la longitud axial



CAT



≤ 0.005 mm



40000 min⁻¹



15000 min⁻¹



Technical data

Datos técnicos

D ₁	D ₂	D ₃	L ₁	L ₂	L ₃	L ₄	L ₅	L ₆	L ₇	G	M _{min}	m
[mm]	ID	[mm]	[mm]	[mm]	[mm]	[mm]	[mm]	[mm]	[mm]		[Nm]	[kg]
3.0	≡											
4.0	≡											
6.0	≡											
8.0	≡											
10.0	≡											
12.0	0209623	•	39.0	44.9	73.0	46.0	10.0	34.0	5.0	32.0	54.0	M8x1 150.0 1.2

- ≡ Additional sizes can be clamped with intermediate sleeves
- Can be supplied from stock

- ≡ Para sujetar con casquillos intermedios
- Posible suministro de existencias

☑ Bore for data carrier as an option

☑ Orificio para portador de datos como opción

ℹ Optimal for heavy duty milling
Additional sizes and special designs available on request

ℹ Óptimo para fresado de trabajo pesado
Tamaños adicionales y diseños especiales disponibles a pedido



Intermediate sleeves
see chapter accessories

Casquillos intermedios
consulte el capítulo sobre accesorios



Spanner wrenches
see chapter accessories

Llaves de apriete
consulte el capítulo sobre accesorios



"C"-spanners
see chapter accessories

Llaves de gancho
consulte el capítulo sobre accesorios



Sleeve remover
see chapter accessories

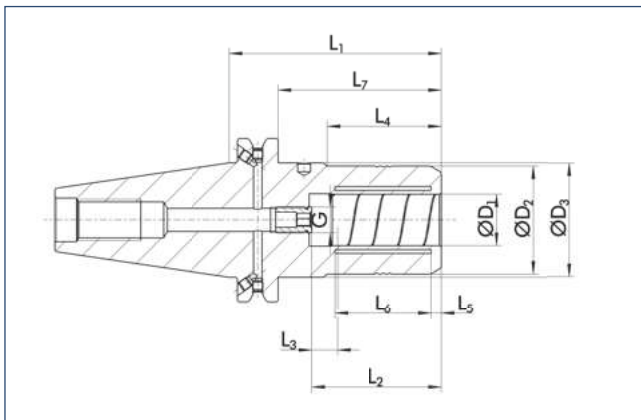
Extractor de casquillos
consulte el capítulo sobre accesorios

SINO-R CAT 40

with axial length adjustment

SINO-R CAT 40

con ajuste de la longitud axial



≤ 0.005 mm



40000 min⁻¹



15000 min⁻¹



Technical data

Datos técnicos

D ₁	ID		D ₂	D ₃	L ₁	L ₂	L ₃	L ₄	L ₅	L ₆	L ₇	G	M _{min}	m
[inch]			[mm]	[mm]	[mm]	[mm]	[mm]	[mm]	[mm]	[mm]	[mm]		[Nm]	[kg]
1/4"	≡													
5/16"	≡													
3/8"	≡													
7/16"	≡													
1/2"	≡													
9/16"	≡													
5/8"	≡													
3/4"	0209614	•	48.5	49.72	78.0	51.0	10.0	24.0	5.0	37.0	59.00	M8x1	450.0	1.5
1"	0209613	•	48.5	50.00	100.0	57.0	10.0	36.0	4.0	38.0	80.95	M10x1	550.0	1.5
1 1/4"	0209615	•	65.0	70.00	115.0	61.0	10.0	47.0	6.0	46.0	95.95	M10x1	800.0	1.5

- ≡ Additional sizes can be clamped with intermediate sleeves
- Can be supplied from stock

CHP Bore for data carrier as an option

i Optimal for heavy duty milling
Additional sizes and special designs available on request

- ≡ Para sujetar con casquillos intermedios
- Posible suministro de existencias

CHP Orificio para portador de datos como opción

i Óptimo para fresado de trabajo pesado
Tamaños adicionales y diseños especiales disponibles a pedido



Intermediate sleeves
see chapter accessories

Casquillos intermedios
consulte el capítulo sobre accesorios



Spanner wrenches
see chapter accessories

Llaves de apriete
consulte el capítulo sobre accesorios



"C"-spanners
see chapter accessories

Llaves de gancho
consulte el capítulo sobre accesorios



Sleeve remover
see chapter accessories

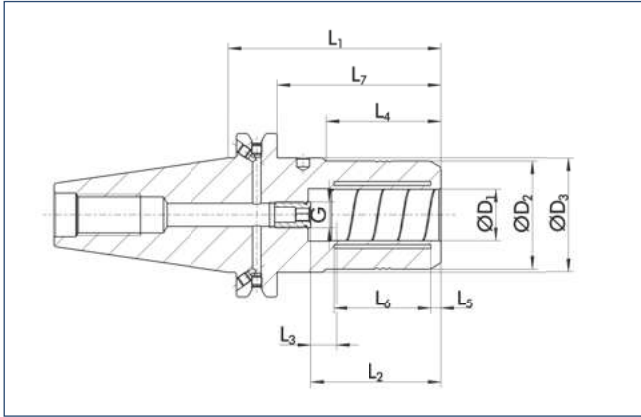
Extractor de casquillos
consulte el capítulo sobre accesorios

SINO-R CAT 40

with axial length adjustment

SINO-R CAT 40

con ajuste de la longitud axial



CAT



Technical data

Datos técnicos

D ₁	D ₂	D ₃	L ₁	L ₂	L ₃	L ₄	L ₅	L ₆	L ₇	G	M _{min}	m
[mm]	ID	[mm]	[mm]	[mm]	[mm]	[mm]	[mm]	[mm]	[mm]		[Nm]	[kg]
3.0	≡											
4.0	≡											
6.0	≡											
8.0	≡											
10.0	≡											
12.0	≡											
16.0	≡											
20.0	0209627	•	48.5	49.72	78.0	51.0	10.0	24.0	5.0	37.0	59.0	M8x1 450.0 1.5

- ≡ Additional sizes can be clamped with intermediate sleeves
- Can be supplied from stock
- ☑ Bore for data carrier as an option
- ℹ Optimal for heavy duty milling
Additional sizes and special designs available on request

- ≡ Para sujetar con casquillos intermedios
- Posible suministro de existencias
- ☑ Orificio para portador de datos como opción
- ℹ Óptimo para fresado de trabajo pesado
Tamaños adicionales y diseños especiales disponibles a pedido



Intermediate sleeves
see chapter accessories
Casquillos intermedios
consulte el capítulo sobre accesorios



Spanner wrenches
see chapter accessories
Llaves de apriete
consulte el capítulo sobre accesorios



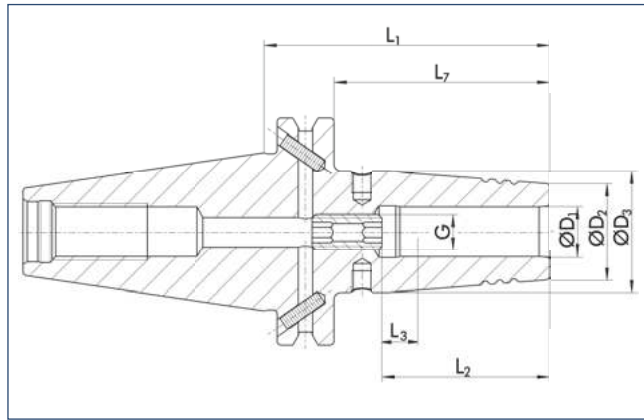
"C"-spanners
see chapter accessories
Llaves de gancho
consulte el capítulo sobre accesorios



Sleeve remover
see chapter accessories
Extractor de casquillos
consulte el capítulo sobre accesorios

CELSIO SSF CAT 40

with axial length adjustment



CELSIO SSF CAT 40

con ajuste de la longitud axial



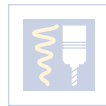
< 0.003 mm*



50000 min⁻¹



25000 min⁻¹



✓



✓



Technical data

Datos técnicos

D ₁	ID	D ₂	D ₃	L ₁	L ₂	L ₃	L ₇	G	M _{min}	m
[inch]		[mm]	[mm]	[mm]	[mm]	[mm]	[mm]		[Nm]	[kg]
1/4"	0208650	21.0	27.0	80.0	36.0	10.0	61.0	M5	20.0	1.0
1/4"	0208651	21.0	27.0	130.0	36.0	10.0	111.0	M5	20.0	1.2
1/4"	0208652	21.0	27.0	160.0	36.0	10.0	141.0	M5	20.0	1.4
5/16"	0208655	21.0	27.0	80.0	36.0	10.0	61.0	M6	52.0	1.0
5/16"	0208656	21.0	27.0	130.0	36.0	10.0	111.0	M6	52.0	1.2
5/16"	0208657	21.0	27.0	160.0	36.0	10.0	141.0	M6	52.0	1.4
3/8"	0208660	24.0	32.0	80.0	42.0	10.0	61.0	M8x1	70.0	1.0
3/8"	0208661	24.0	32.0	130.0	42.0	10.0	111.0	M8x1	70.0	1.3
3/8"	0208662	24.0	32.0	160.0	42.0	10.0	141.0	M8x1	70.0	1.6
7/16"	0208665	24.0	32.0	80.0	42.0	10.0	61.0	M8x1	150.0	1.0
7/16"	0208666	24.0	32.0	130.0	42.0	10.0	111.0	M8x1	150.0	1.3
7/16"	0208667	24.0	32.0	160.0	42.0	10.0	141.0	M8x1	150.0	1.6
1/2"	0208670	24.0	32.0	80.0	47.0	10.0	61.0	M10x1	150.0	1.0
1/2"	0208671	24.0	32.0	130.0	47.0	10.0	111.0	M10x1	150.0	1.3
1/2"	0208672	24.0	32.0	160.0	47.0	10.0	141.0	M10x1	150.0	1.6

• Can be supplied from stock

• Posible suministro de existencias

🔧 Design suitable for MQL operations available on request

🔧 Diseño apto para operaciones MQL disponible a pedido

🔧 Bore for data carrier as an option

🔧 Orificio para portador de datos como opción

📄 Additional sizes and special designs available on request

📄 Tamaños adicionales y diseños especiales disponibles a pedido

* Run-out accuracy measured in the clamping diameter according to DIN 69882-8

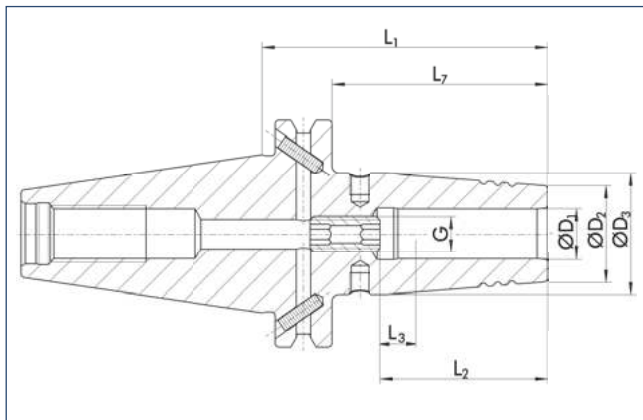
* Precisión de concentricidad medida en el diámetro de sujeción de acuerdo a DIN 69882-8

CELSIO SSF CAT 40

with axial length adjustment

CELSIO SSF CAT 40

con ajuste de la longitud axial



CAT



< 0.003 mm*



50000 min⁻¹



25000 min⁻¹



Technical data

Datos técnicos

D ₁ [inch]	ID	D ₂ [mm]	D ₃ [mm]	L ₁ [mm]	L ₂ [mm]	L ₃ [mm]	L ₇ [mm]	G	M _{min} [Nm]	m [kg]
5/8"	0208675	27.0	34.0	80.0	50.0	10.0	61.0	M12x1	300.0	1.0
5/8"	0208676	27.0	34.0	130.0	50.0	10.0	111.0	M12x1	300.0	1.4
5/8"	0208677	27.0	34.0	160.0	50.0	10.0	141.0	M12x1	300.0	1.6
3/4"	0208680	33.0	42.0	80.0	52.0	10.0	61.0	M16x1	420.0	1.2
3/4"	0208681	33.0	42.0	130.0	52.0	10.0	111.0	M16x1	420.0	1.5
3/4"	0208682	33.0	42.0	160.0	52.0	10.0	141.0	M16x1	420.0	1.9
1"	0208685	44.0	53.0	100.0	58.0	10.0	81.0	M16x1	550.0	1.6
1"	0208686	44.0	53.0	130.0	58.0	10.0	111.0	M16x1	550.0	1.8
1"	0208687	44.0	53.0	160.0	58.0	10.0	141.0	M16x1	550.0	2.5
1 1/4"	0208690	44.0	53.0	100.0	58.0	10.0	81.0	M16x1	600.0	1.5
1 1/4"	0208691	44.0	53.0	130.0	58.0	10.0	111.0	M16x1	600.0	1.7
1 1/4"	0208692	44.0	53.0	160.0	58.0	10.0	141.0	M16x1	600.0	1.9

• Can be supplied from stock

• Posible suministro de existencias

Design suitable for MQL operations available on request

Diseño apto para operaciones MQL disponible a pedido

Bore for data carrier as an option

Orificio para portador de datos como opción

Additional sizes and special designs available on request

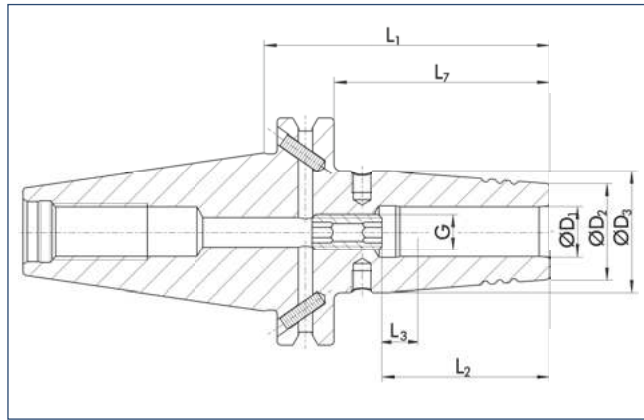
Tamaños adicionales y diseños especiales disponibles a pedido

* Run-out accuracy measured in the clamping diameter according DIN 69882-8

* Precisión de concentricidad medida en el diámetro de sujeción de acuerdo a DIN 69882-8

CELSIO SSF CAT 40

with axial length adjustment



CELSIO SSF CAT 40

con ajuste de la longitud axial



< 0.003 mm*



50000 min⁻¹



25000 min⁻¹



✓



✓



Technical data

Datos técnicos

D ₁ [mm]	ID	D ₂ [mm]	D ₃ [mm]	L ₁ [mm]	L ₂ [mm]	L ₃ [mm]	L ₇ [mm]	G	M _{min} [Nm]	m [kg]
6.0	0208600	21.0	27.0	80.0	36.0	10.0	61.0	M5	20.0	1.0
6.0	0208601	21.0	27.0	130.0	36.0	10.0	111.0	M5	20.0	1.2
6.0	0208602	21.0	27.0	160.0	36.0	10.0	141.0	M5	20.0	1.4
8.0	0208605	21.0	27.0	80.0	36.0	10.0	61.0	M6	52.0	1.0
8.0	0208606	21.0	27.0	130.0	36.0	10.0	111.0	M6	52.0	1.2
8.0	0208607	21.0	27.0	160.0	36.0	10.0	141.0	M6	52.0	1.4
10.0	0208610	24.0	32.0	80.0	42.0	10.0	61.0	M8x1	70.0	1.0
10.0	0208611	24.0	32.0	130.0	42.0	10.0	111.0	M8x1	70.0	1.3
10.0	0208612	24.0	32.0	160.0	42.0	10.0	141.0	M8x1	70.0	1.6
12.0	0208615	24.0	32.0	80.0	47.0	10.0	61.0	M10x1	150.0	1.0
12.0	0208616	24.0	32.0	130.0	47.0	10.0	111.0	M10x1	150.0	1.3
12.0	0208617	24.0	32.0	160.0	47.0	10.0	141.0	M10x1	150.0	1.6

- Can be supplied from stock

Design suitable for MQL operations available on request
 Bore for data carrier as an option

Additional sizes and special designs available on request

* Run-out accuracy measured in the clamping diameter according to DIN 69882-8

- Posible suministro de existencias

Diseño apto para operaciones MQL disponible a pedido
 Orificio para portador de datos como opción

Tamaños adicionales y diseños especiales disponibles a pedido

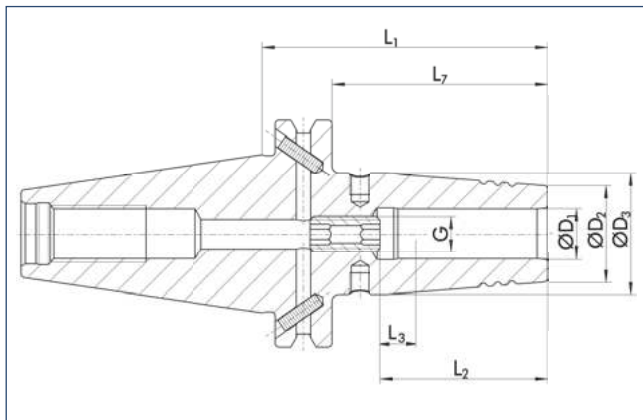
* Precisión de concentricidad medida en el diámetro de sujeción de acuerdo a DIN 69882-8

CELSIO SSF CAT 40

with axial length adjustment

CELSIO SSF CAT 40

con ajuste de la longitud axial



CAT



< 0.003 mm*



50000 min⁻¹



25000 min⁻¹



✓



✓



Technical data

Datos técnicos

D ₁ [mm]	ID	D ₂ [mm]	D ₃ [mm]	L ₁ [mm]	L ₂ [mm]	L ₃ [mm]	L ₇ [mm]	G	M _{min} [Nm]	m [kg]
16.0	0208625	27.0	34.0	80.0	50.0	10.0	61.0	M12x1	300.0	1.0
16.0	0208626	27.0	34.0	130.0	50.0	10.0	111.0	M12x1	300.0	1.4
16.0	0208627	27.0	34.0	160.0	50.0	10.0	141.0	M12x1	300.0	1.6
20.0	0208635	33.0	42.0	80.0	52.0	10.0	61.0	M16x1	420.0	1.2
20.0	0208636	33.0	42.0	130.0	52.0	10.0	111.0	M16x1	420.0	1.5
20.0	0208637	33.0	42.0	160.0	52.0	10.0	141.0	M16x1	420.0	1.9
25.0	0208640	44.0	53.0	100.0	58.0	10.0	81.0	M16x1	550.0	1.6
25.0	0208641	44.0	53.0	130.0	58.0	10.0	111.0	M16x1	550.0	1.8
25.0	0208642	44.0	53.0	160.0	58.0	10.0	141.0	M16x1	550.0	2.5
32.0	0208645	44.0	53.0	100.0	58.0	10.0	81.0	M16x1	600.0	1.5
32.0	0208646	44.0	53.0	130.0	58.0	10.0	111.0	M16x1	600.0	1.7
32.0	0208647	44.0	53.0	160.0	58.0	10.0	141.0	M16x1	600.0	1.9

• Can be supplied from stock

• Posible suministro de existencias

Design suitable for MQL operations available on request

Diseño apto para operaciones MQL disponible a pedido

Bore for data carrier as an option

Orificio para portador de datos como opción

Additional sizes and special designs available on request

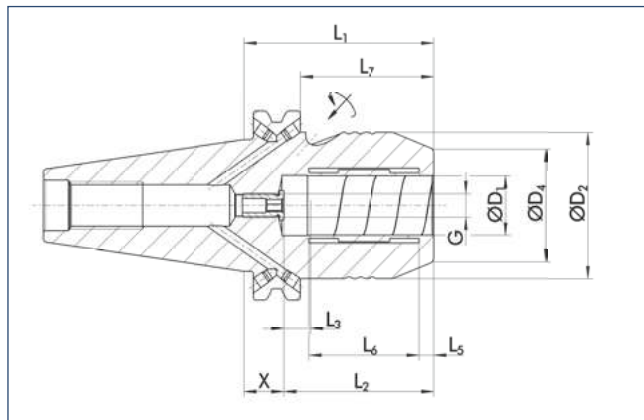
Tamaños adicionales y diseños especiales disponibles a pedido

* Run-out accuracy measured in the clamping diameter according DIN 69882-8

* Precisión de concentricidad medida en el diámetro de sujeción de acuerdo a DIN 69882-8

TENDO SDF-E compact CAT 50

short, rigid design
with axial length adjustment



TENDO SDF-E compact CAT 50

corto, diseño rígido
con ajuste de la longitud axial



Technical data

Datos técnicos

D ₁ [inch]	ID	D ₂ [mm]	D ₄ [mm]	X [mm]	L ₁ [mm]	L ₂ [mm]	L ₃ [mm]	L ₅ [mm]	L ₆ [mm]	L ₇ [mm]	G	M _{min} [Nm]	m [kg]
1/4"	≡												
1/2"	≡												
5/8"	≡												
3/4"	≡												
1"	≡												
1 1/4"	0206478	• 72.0	58.5	20.0	81.0	61.0	10.0	6.0	44.0	61.95	M8x1	900.0	4.1

- ≡ Additional sizes can be clamped with intermediate sleeves
- Can be supplied from stock

- ≡ Para sujetar con casquillos intermedios
- Posible suministro de existencias

- ☑ Design suitable for MQL operations available on request
- ☑ Bore for data carrier as an option

- ☑ Diseño apto para operaciones MQL disponible a pedido
- ☑ Orificio para portador de datos como opción

- ℹ Bore on form B are sealed with set screws

- ℹ Orificios en forma B sellados con tornillos de fijación

Intermediate sleeves
see chapter accessories

Casquillos intermedios
consulte el capítulo sobre accesorios

Sleeve remover
see chapter accessories

Extractor de casquillos
consulte el capítulo sobre accesorios

Further accessories
see chapter accessories

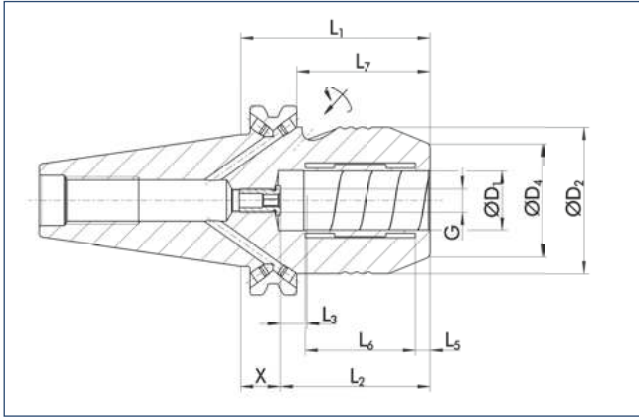
Accesorios adicionales
consulte el capítulo sobre accesorios

TENDO SDF-E compact CAT 50

short, rigid design
with axial length adjustment

TENDO SDF-E compact CAT 50

corto, diseño rígido
con ajuste de la longitud axial



CAT



Technical data

Datos técnicos

D ₁ [mm]	ID	D ₂ [mm]	D ₄ [mm]	X [mm]	L ₁ [mm]	L ₂ [mm]	L ₃ [mm]	L ₅ [mm]	L ₆ [mm]	L ₇ [mm]	G	M _{min} [Nm]	m [kg]
6.0	≡												
8.0	≡												
10.0	≡												
14.0	≡												
16.0	≡												
18.0	≡												
20.0	≡												
25.0	≡												
32.0	0206498	• 72.0	58.5	20.0	81.0	61.0	10.0	6.0	44.0	61.95	M8x1	900.0	4.1

≡ Additional sizes can be clamped with intermediate sleeves
• Can be supplied from stock

≡ Para sujetar con casquillos intermedios
• Posible suministro de existencias

🔧 Design suitable for MQL operations available on request
📄 Bore for data carrier as an option

🔧 Diseño apto para operaciones MQL disponible a pedido
📄 Orificio para portador de datos como opción

📄 Bore on form B are sealed with set screws

📄 Orificios en forma B sellados con tornillos de fijación



Intermediate sleeves
see chapter accessories

Casquillos intermedios
consulte el capítulo sobre accesorios



Sleeve remover
see chapter accessories

Extractor de casquillos
consulte el capítulo sobre accesorios

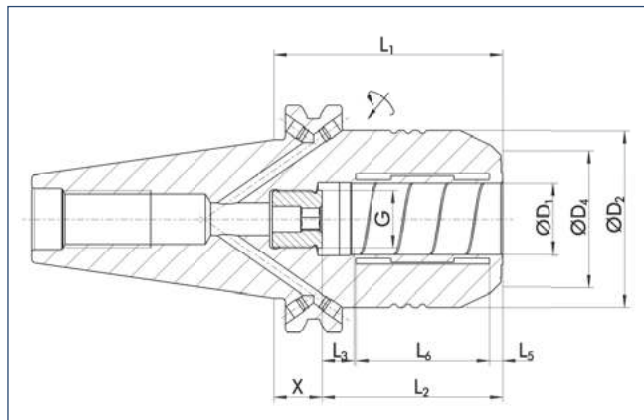


Further accessories
see chapter accessories

Accesorios adicionales
consulte el capítulo sobre accesorios

TENDO SDF CAT 50

short, rigid design
with axial length adjustment



TENDO SDF CAT 50

corto, diseño rígido
con ajuste de la longitud axial



Technical data

Datos técnicos

D ₁ [inch]	ID		D ₂ [mm]	D ₄ [mm]	X [mm]	L ₁ [mm]	L ₂ [mm]	L ₃ [mm]	L ₅ [mm]	L ₆ [mm]	G	M _{min} [Nm]	m [kg]
1/4"	0203942	•	69.9	25.7	44.0	81.0	37.0	10.0	3.6	20.5	M5	17.0	2.4
5/16"	≡												
3/8"	0203943	•	69.9	36.2	40.0	81.0	41.0	10.0	3.6	25.5	M6	45.0	2.4
7/16"	≡												
1/2"	0203944	•	69.9	46.2	35.0	81.0	46.0	10.0	3.6	30.5	M10x1	95.0	2.4
9/16"	≡												
5/8"	0203945	•	69.9	46.0	32.0	81.0	49.0	10.0	3.6	35.0	M10x1	185.0	2.4
11/16"	≡												
3/4"	0203946	•	69.9	55.5	30.0	81.0	51.0	10.0	3.7	37.8	M10x1	310.0	2.5
13/16"	≡												
7/8"	≡												
15/16"	≡												
1"	0203949	•	69.9	55.5	24.0	81.0	57.0	10.0	4.2	42.3	M16x1	400.0	2.5
1 1/4"	0203947	•	69.9	55.5	20.0	81.0	61.0	10.0	4.2	47.7	M16x1	650.0	4.1

- ≡ Additional sizes can be clamped with intermediate sleeves
- Can be supplied from stock

- 🔧 Design suitable for MQL operations available on request
- 🔧 Bore for data carrier as an option

- 📄 Bore on form B are sealed with set screws
- Additional sizes and special designs available on request

- ≡ Para sujetar con casquillos intermedios
- Posible suministro de existencias

- 🔧 Diseño apto para operaciones MQL disponible a pedido
- 🔧 Orificio para portador de datos como opción

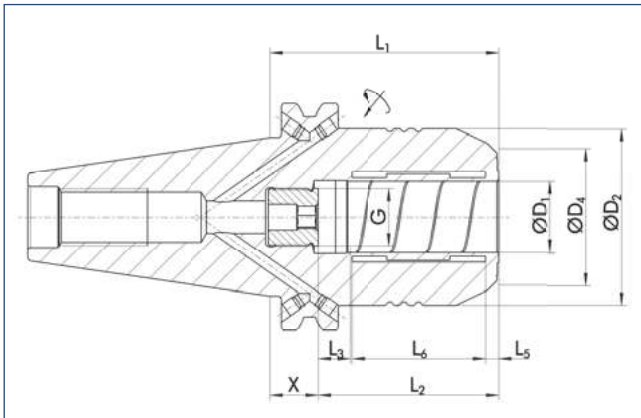
- 📄 Orificios en forma B sellados con tornillos de fijación
- Tamaños adicionales y diseños especiales disponibles a pedido

TENDO SDF CAT 50

short, rigid design
with axial length adjustment

TENDO SDF CAT 50

corto, diseño rígido
con ajuste de la longitud axial



CAT



Technical data

Datos técnicos

D ₁ [mm]	ID	D ₂ [mm]	D ₄ [mm]	X [mm]	L ₁ [mm]	L ₂ [mm]	L ₃ [mm]	L ₅ [mm]	L ₆ [mm]	G	M _{min} [Nm]	m [kg]
6.0	0203981	• 69.9	25.7	44.0	81.0	37.0	10.0	3.6	20.5	M5	16.0	2.4
8.0	☰											
10.0	0203983	• 69.9	36.2	40.0	81.0	41.0	10.0	3.6	25.5	M6	45.0	2.4
12.0	0203984	• 69.9	46.2	35.0	81.0	46.0	10.0	3.6	30.5	M10x1	90.0	2.4
14.0	0203989	• 69.9	46.2	35.0	81.0	47.5	10.0	3.6	30.5	M10x1	110.0	2.4
16.0	0203985	• 69.9	45.5	32.0	81.0	49.0	10.0	3.6	35.0	M10x1	185.0	2.4
18.0	☰											
20.0	0203986	• 69.9	55.5	30.0	81.0	51.0	10.0	3.7	37.8	M10x1	330.0	2.5
25.0	0203987	• 69.9	55.5	24.0	81.0	57.0	10.0	4.2	42.3	M16x1	400.0	2.5
32.0	0203988	• 69.9	55.5	20.0	81.0	61.0	10.0	4.2	47.7	M16x1	650.0	4.1

☰ Additional sizes can be clamped with intermediate sleeves
• Can be supplied from stock

🔧 Design suitable for MQL operations available on request
📄 Bore for data carrier as an option

📄 Bores on form B are sealed with set screws
Additional sizes and special designs available on request

☰ Para sujetar con casquillos intermedios
• Posible suministro de existencias

🔧 Diseño apto para operaciones MQL disponible a pedido
📄 Orificio para portador de datos como opción

📄 Orificios en forma B sellados con tornillos de fijación
Tamaños adicionales y diseños especiales disponibles a pedido

Intermediate sleeves
see chapter accessories
Casquillos intermedios
consulte el capítulo sobre accesorios

Sleeve remover
see chapter accessories
Extractor de casquillos
consulte el capítulo sobre accesorios

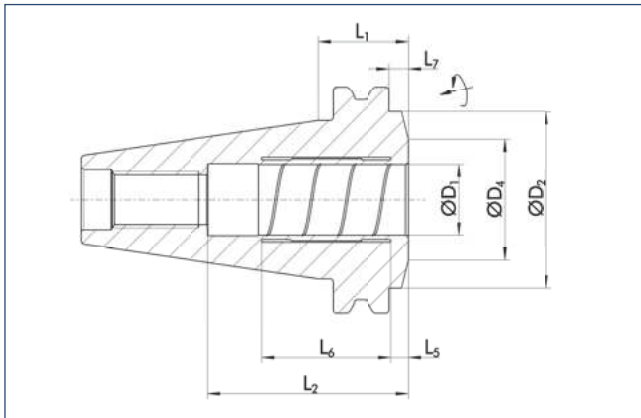
Further accessories
see chapter accessories
Accesorios adicionales
consulte el capítulo sobre accesorios

TENDO SDF-ES CAT 50

extra short design

TENDO SDF-ES CAT 50

diseño extra corto



<math>< 0.003 \text{ mm}</math>



50000 min⁻¹



✓



✓



✓



✓



✓



✓

Technical data

Datos técnicos

D ₁ [inch]	ID	D ₂ [mm]	D ₄ [mm]	L ₁ [mm]	L ₂ [mm]	L ₅ [mm]	L ₆ [mm]	L ₇ [mm]	M _{min} [Nm]	m [kg]
1/4"	≡									
3/8"	≡									
1/2"	≡									
5/8"	≡									
3/4"	≡									
7/8"	≡									
1"	≡									
1 1/4"	0204318	• 69.85	48.0	30.9	61.0	6.0	43.1	11.85	650.0	2.6

- ≡ Additional sizes can be clamped with intermediate sleeves
- Can be supplied from stock

CHP Bore for data carrier as an option

i Additional sizes and special designs available on request

- ≡ Para sujetar con casquillos intermedios
- Posible suministro de existencias

CHP Orificio para portador de datos como opción

i Tamaños adicionales y diseños especiales disponibles a pedido



Intermediate sleeves

see chapter accessories

Casquillos intermedios

consulte el capítulo sobre accesorios



Sleeve remover

see chapter accessories

Extractor de casquillos

consulte el capítulo sobre accesorios



Further accessories

see chapter accessories

Accesorios adicionales

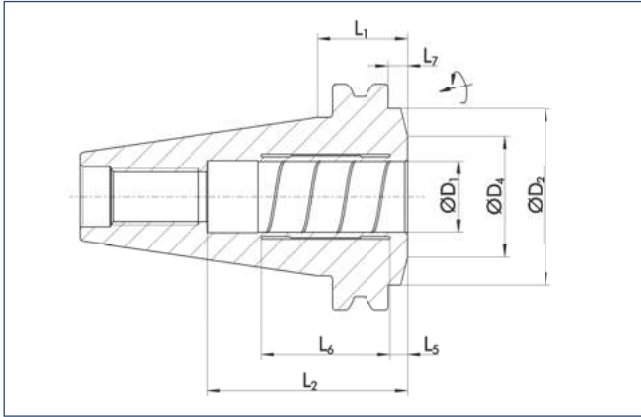
consulte el capítulo sobre accesorios

TENDO SDF-ES CAT 50

extra short design

TENDO SDF-ES CAT 50

diseño extra corto



CAT



Technical data

Datos técnicos

D ₁ [mm]	ID	D ₂ [mm]	D ₄ [mm]	L ₁ [mm]	L ₂ [mm]	L ₅ [mm]	L ₆ [mm]	L ₇ [mm]	M _{min} [Nm]	m [kg]
6.0	≡									
8.0	≡									
10.0	≡									
12.0	≡									
14.0	≡									
16.0	≡									
18.0	≡									
25.0	≡									
32.0	0204319	• 69.85	48.0	30.9	61.0	6.0	43.7	11.85	650.0	2.6

≡ Additional sizes can be clamped with intermediate sleeves
 • Can be supplied from stock

≡ Para sujetar con casquillos intermedios
 • Posible suministro de existencias

⊕ Bore for data carrier as an option

⊕ Orificio para portador de datos como opción

ℹ Additional sizes and special designs available on request

ℹ Tamaños adicionales y diseños especiales disponibles a pedido



Intermediate sleeves
see chapter accessories

Casquillos intermedios
consulte el capítulo sobre accesorios



Sleeve remover
see chapter accessories

Extractor de casquillos
consulte el capítulo sobre accesorios

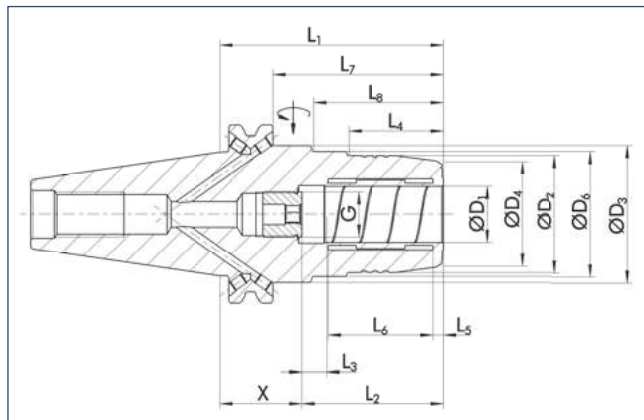


Further accessories
see chapter accessories

Accesorios adicionales
consulte el capítulo sobre accesorios

TENDO SDF-KS CAT 50

short, slim design
with axial length adjustment



TENDO SDF-KS CAT 50

corto, diseño delgado
con ajuste de la longitud axial



Technical data

Datos técnicos

D ₁ [inch]	ID		D ₂ [mm]	D ₃ [mm]	D ₄ [mm]	D ₆ [mm]	X [mm]	L ₁ [mm]	L ₂ [mm]	L ₃ [mm]	L ₄ [mm]	L ₅ [mm]	L ₆ [mm]	L ₇ [mm]	L ₈ [mm]	G	M _{min} [Nm]	m [kg]
1/4"	0204650	•	26.0	69.9	21.7	50.25	64.6	101.6	37.0	10.0	32.5	3.6	20.5	82.55	60.5	M5	17.0	2.7
5/16"	≡																	
3/8"	0204652	•	30.0	69.9	26.7	50.25	60.6	101.6	41.0	10.0	36.0	3.6	25.5	82.55	60.5	M6	45.0	2.7
7/16"	≡																	
1/2"	0204653	•	32.0	69.9	27.7	50.25	55.6	101.6	46.0	10.0	41.5	3.6	30.5	82.55	60.5	M10x1	95.0	2.7
9/16"	≡																	
5/8"	0204654	•	38.0	69.9	33.7	50.25	52.6	101.6	49.0	10.0	47.5	3.6	35.0	82.55	60.5	M10x1	185.0	2.7
11/16"	≡																	
3/4"	0204655	•	42.0	69.9	37.7	50.25	50.6	101.6	51.0	10.0	49.5	3.7	37.8	82.55	60.5	M10x1	310.0	2.8
13/16"	≡																	
7/8"	≡																	
15/16"	≡																	
1"	0204656	•	57.0	69.9	52.8	63.0	44.6	101.6	57.0	10.0	49.5	4.2	42.3	82.55	64.0	M16x1	400.0	2.8
1 1/4"	0204657	•	64.0	69.9	59.7		40.6	101.6	61.0	10.0	65.0	4.2	47.7	82.55		M16x1	650.0	4.1

≡ Additional sizes can be clamped with intermediate sleeves
• Can be supplied from stock

≡ Para sujetar con casquillos intermedios
• Posible suministro de existencias

🔧 Design suitable for MQL operations available on request
🔧 Bore for data carrier as an option

🔧 Diseño apto para operaciones MQL disponible a pedido
🔧 Orificio para portador de datos como opción

📄 Bore on form B are sealed with set screws
Additional sizes and special designs available on request

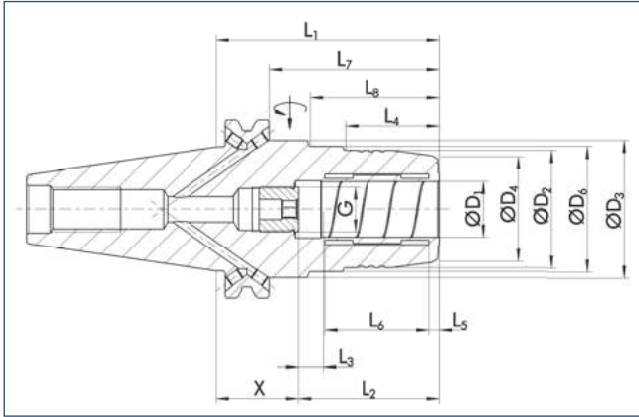
📄 Orificios en forma B sellados con tornillos de fijación
Tamaños adicionales y diseños especiales disponibles a pedido

TENDO SDF-KS CAT 50

short, slim design
with axial length adjustment

TENDO SDF-KS CAT 50

corto, diseño delgado
con ajuste de la longitud axial



CAT



Technical data

Datos técnicos

D ₁ [mm]	ID	D ₂ [mm]	D ₃ [mm]	D ₄ [mm]	D ₆ [mm]	X [mm]	L ₁ [mm]	L ₂ [mm]	L ₃ [mm]	L ₄ [mm]	L ₅ [mm]	L ₆ [mm]	L ₇ [mm]	L ₈ [mm]	G	M _{min} [Nm]	m [kg]
6.0	0204661	• 26.0	69.9	21.7	50.25	64.6	101.6	37.0	10.0	32.5	3.6	20.5	82.55	60.5	M5	16.0	2.7
8.0	☰																
10.0	0204663	• 30.0	69.9	26.7	50.25	60.6	101.6	41.0	10.0	36.0	3.6	25.5	82.55	60.5	M6	45.0	2.7
12.0	0204664	• 32.0	69.9	27.7	50.25	55.6	101.6	46.0	10.0	41.5	3.6	30.5	82.55	60.5	M10x1	90.0	2.7
14.0	0204669	• 34.0	69.9	29.7	50.25	55.6	101.6	46.0	10.0	41.5	3.6	30.5	82.55	60.5	M10x1	110.0	2.7
16.0	0204665	• 38.0	69.9	33.7	50.25	52.6	101.6	49.0	10.0	47.5	3.6	35.0	82.55	60.5	M10x1	185.0	2.7
18.0	☰																
20.0	0204666	• 42.0	69.9	37.7	50.25	50.6	101.6	51.0	10.0	49.5	3.7	37.8	82.55	60.5	M10x1	330.0	2.8
25.0	0204667	• 57.0	69.9	52.8	63.0	44.6	101.6	57.0	10.0	49.5	4.2	42.3	82.55	64.0	M16x1	400.0	2.8
32.0	0204668	• 64.0	69.9	59.7		40.6	101.6	61.0	10.0	65.0	4.2	47.7	82.55		M16x1	650.0	4.1

☰ Additional sizes can be clamped with intermediate sleeves
• Can be supplied from stock

🔧 Design suitable for MQL operations available on request
📄 Bore for data carrier as an option

📄 Bore on form B are sealed with set screws
Additional sizes and special designs available on request

☰ Para sujetar con casquillos intermedios
• Posible suministro de existencias

🔧 Diseño apto para operaciones MQL disponible a pedido
📄 Orificio para portador de datos como opción

📄 Orificios en forma B sellados con tornillos de fijación
Tamaños adicionales y diseños especiales disponibles a pedido

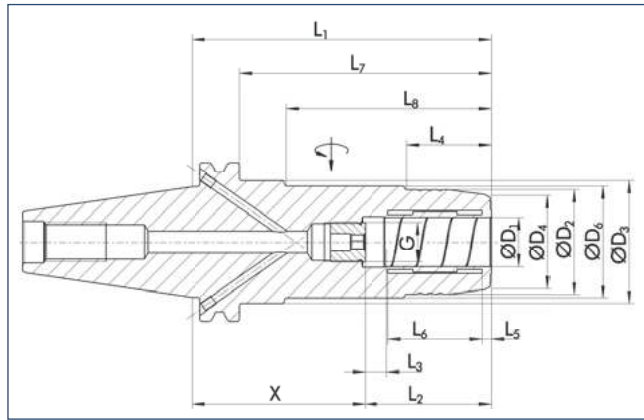
Intermediate sleeves
see chapter accessories
Casquillos intermedios
consulte el capítulo sobre accesorios

Sleeve remover
see chapter accessories
Extractor de casquillos
consulte el capítulo sobre accesorios

Further accessories
see chapter accessories
Accesorios adicionales
consulte el capítulo sobre accesorios

TENDO SDF-LS CAT 50

long, slim design
with axial length adjustment



TENDO SDF-LS CAT 50

largo, diseño delgado
con ajuste de la longitud axial



Technical data

Datos técnicos

D ₁ [inch]	ID	D ₂ [mm]	D ₃ [mm]	D ₄ [mm]	D ₆ [mm]	X [mm]	L ₁ [mm]	L ₂ [mm]	L ₃ [mm]	L ₄ [mm]	L ₅ [mm]	L ₆ [mm]	L ₇ [mm]	L ₈ [mm]	G	M _{min} [Nm]	m [kg]
1/4"	0204670	• 26.0	69.9	21.7	50.25	115.4	152.4	37.0	10.0	32.5	3.6	20.5	133.3	110.5	M5	17.0	2.7
5/16"	≡																
3/8"	0204672	• 30.0	69.9	26.7	50.25	111.4	152.4	41.0	10.0	36.5	3.6	25.5	133.3	110.5	M6	45.0	2.7
7/16"	≡																
1/2"	0204673	• 32.0	69.9	27.7	50.25	106.4	152.4	46.0	10.0	41.5	3.6	30.5	133.3	110.5	M10x1	95.0	2.7
9/16"	≡																
5/8"	0204674	• 38.0	69.9	33.7	50.25	103.4	152.4	49.0	10.0	47.5	3.6	35.0	133.3	110.5	M10x1	185.0	2.7
11/16"	≡																
3/4"	0204675	• 42.0	69.9	37.7	50.25	101.4	152.4	51.0	10.0	49.5	3.7	37.8	133.3	110.5	M10x1	310.0	2.8
13/16"	≡																
7/8"	≡																
15/16"	≡																
1"	0204676	• 57.0	69.9	52.8	63.0	95.4	152.4	57.0	10.0	49.5	4.2	42.3	133.3	115.0	M16x1	400.0	2.8
1 1/4"	0204677	• 64.0	69.9	59.7		91.4	152.4	61.0	10.0	114.5	4.2	47.7	133.3		M16x1	650.0	4.1

- ≡ Additional sizes can be clamped with intermediate sleeves
- Can be supplied from stock

- 🔧 Design suitable for MQL operations available on request
- 🔧 Bore for data carrier as an option

- 📄 Bore on form B are sealed with set screws
- Additional sizes and special designs available on request

- ≡ Para sujetar con casquillos intermedios
- Posible suministro de existencias

- 🔧 Diseño apto para operaciones MQL disponible a pedido
- 🔧 Orificio para portador de datos como opción

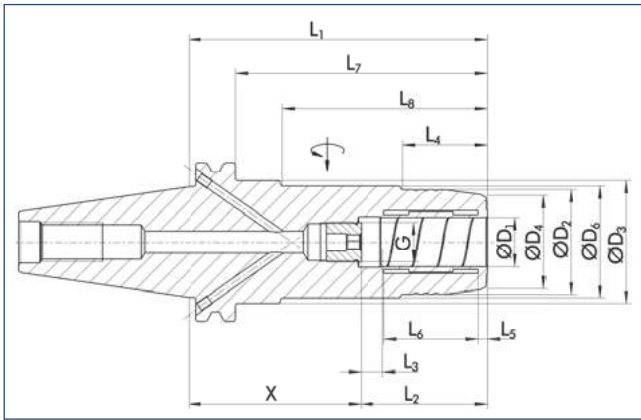
- 📄 Orificios en forma B sellados con tornillos de fijación
- Tamaños adicionales y diseños especiales disponibles a pedido

TENDO SDF-LS CAT 50

long, slim design
with axial length adjustment

TENDO SDF-LS CAT 50

largo, diseño delgado
con ajuste de la longitud axial



CAT



Technical data

Datos técnicos

D ₁ [mm]	ID	D ₂ [mm]	D ₃ [mm]	D ₄ [mm]	D ₆ [mm]	X [mm]	L ₁ [mm]	L ₂ [mm]	L ₃ [mm]	L ₄ [mm]	L ₅ [mm]	L ₆ [mm]	L ₇ [mm]	L ₈ [mm]	G	M _{min} [Nm]	m [kg]
6.0	0204681	• 26.0	69.9	21.7	50.25	115.4	152.4	37.0	10.0	32.5	3.6	20.5	133.3	110.5	M5	16.0	2.7
8.0	☰																
10.0	0204683	• 30.0	69.9	27.7	50.25	111.4	152.4	41.0	10.0	36.0	3.6	25.5	133.3	110.5	M6	45.0	2.7
12.0	0204684	• 32.0	69.9	27.7	50.25	106.4	152.4	46.0	10.0	41.5	3.6	30.5	133.3	110.5	M10x1	90.0	2.7
14.0	0204689	• 34.0	69.9	29.7	50.25	106.4	152.4	46.0	10.0	41.5	3.6	30.5	133.3	110.5	M10x1	110.0	2.7
16.0	0204685	• 38.0	69.9	33.7	50.25	103.4	152.4	49.0	10.0	47.5	3.6	35.0	133.3	110.5	M10x1	185.0	2.7
18.0	☰																
20.0	0204686	• 42.0	69.9	37.7	50.25	101.4	152.4	51.0	10.0	49.5	3.7	37.8	133.3	110.5	M10x1	330.0	2.8
25.0	0204687	• 57.0	69.9	52.8	63.0	95.4	152.4	57.0	10.0	49.5	4.2	42.3	133.3	115.0	M16x1	400.0	2.8
32.0	0204688	• 64.0	69.9	59.7		91.4	152.4	61.0	10.0	115.0	4.2	47.7	133.3		M16x1	650.0	4.1

☰ Additional sizes can be clamped with intermediate sleeves
• Can be supplied from stock

🔧 Design suitable for MQL operations available on request
📄 Bore for data carrier as an option

📄 Bore on form B are sealed with set screws
Additional sizes and special designs available on request

☰ Para sujetar con casquillos intermedios
• Posible suministro de existencias

🔧 Diseño apto para operaciones MQL disponible a pedido
📄 Orificio para portador de datos como opción

📄 Orificios en forma B sellados con tornillos de fijación
Tamaños adicionales y diseños especiales disponibles a pedido

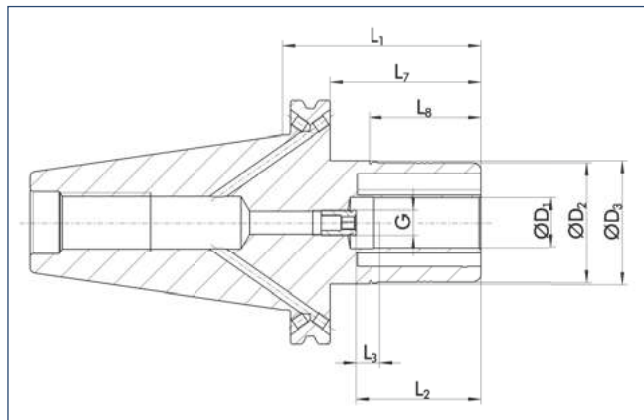
Intermediate sleeves
see chapter accessories
Casquillos intermedios
consulte el capítulo sobre accesorios

Sleeve remover
see chapter accessories
Extractor de casquillos
consulte el capítulo sobre accesorios

Further accessories
see chapter accessories
Accesorios adicionales
consulte el capítulo sobre accesorios

TRIBOS SPF-R CAT 50

short, rigid design
with axial length adjustment



TRIBOS SPF-R CAT 50

corto, diseño rígido
con ajuste de la longitud axial



Technical data

Datos técnicos

D ₁ [inch]	ID		D ₂ [mm]	D ₃ [mm]	L ₁ [mm]	L ₂ [mm]	L ₃ [mm]	L ₇ [mm]	L ₈ [mm]	G	M _{min} [Nm]	m [kg]	SRE ID
1/8"	≡												
3/16"	≡												
1/4"	≡												
5/16"	≡												
3/8"	≡												
7/16"	≡												
1/2"	0233782	•	48.0	69.85	90.0	47.0	10.0	71.0	45.0	M8x1	50.0	3.99	0201984
9/16"	≡												
5/8"	≡												
11/16"	≡												
3/4"	0233784	•	48.0	69.85	90.0	52.0	10.0	71.0	45.0	M10x1	200.0	4.09	0201984
13/16"	≡												
7/8"	≡												
15/16"	≡												
1"	0233786	•	60.0	69.85	90.0	57.0	10.0	71.0	45.0	M10x1	270.0	4.13	0201921
1 1/4"	0233785	•	67.0	69.85	90.0	61.0	10.0	71.0	45.0	M10x1	330.0	4.39	0201922

- ≡ Additional sizes can be clamped with intermediate sleeves
- Can be supplied from stock

- 🔧 Design suitable for MQL operations available on request
- 🔧 Bore for data carrier as an option

- 📄 Bore on form B are sealed with set screws
- Additional sizes and special designs available on request

- ≡ Para sujetar con casquillos intermedios
- Posible suministro de existencias

- 🔧 Diseño apto para operaciones MQL disponible a pedido
- 🔧 Orificio para portador de datos como opción

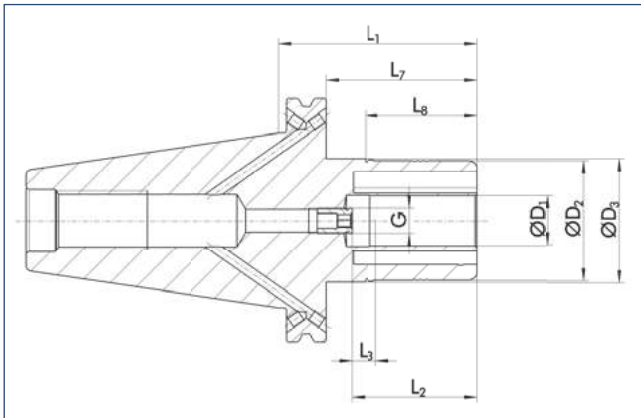
- 📄 Orificios en forma B sellados con tornillos de fijación
- Tamaños adicionales y diseños especiales disponibles a pedido

TRIBOS SPF-R CAT 50

short, rigid design
with axial length adjustment

TRIBOS SPF-R CAT 50

corto, diseño rígido
con ajuste de la longitud axial



CAT



Technical data

Datos técnicos

D ₁ [mm]	ID		D ₂ [mm]	D ₃ [mm]	L ₁ [mm]	L ₂ [mm]	L ₃ [mm]	L ₇ [mm]	L ₈ [mm]	G	M _{min} [Nm]	m [kg]	SRE ID
6.0	≡												
8.0	≡												
10.0	≡												
12.0	0235924	•	42.0	69.85	90.0	47.0	10.0	71.0	45.0	M8x1	40.0	3.49	0201983
14.0	≡												
16.0	≡												
18.0	≡												
20.0	0235926	•	48.0	69.85	90.0	52.0	10.0	71.0	45.0	M10x1	240.0	3.58	0201984
25.0	0235927	•	60.0	69.85	90.0	57.0	10.0	71.0	45.0	M10x1	270.0	3.86	0201921
32.0	0235928	•	67.0	69.85	90.0	61.0	10.0	71.0	45.0	M10x1	350.0	4.13	0201922

≡ Additional sizes can be clamped with intermediate sleeves
• Can be supplied from stock

🔧 Design suitable for MQL operations available on request
GHP Bore for data carrier as an option

i Bores on form B are sealed with set screws
Additional sizes and special designs available on request

≡ Para sujetar con casquillos intermedios
• Posible suministro de existencias

🔧 Diseño apto para operaciones MQL disponible a pedido
GHP Orificio para portador de datos como opción

i Orificios en forma B sellados con tornillos de fijación
Tamaños adicionales y diseños especiales disponibles a pedido



Tool extensions
see chapter accessories

Extensiones de herramientas
consulte el capítulo sobre accesorios



Clamping devices
see chapter accessories

Dispositivos de sujeción
consulte el capítulo sobre accesorios



Reduction inserts
see chapter accessories

Insertos de reducción
consulte el capítulo sobre accesorios

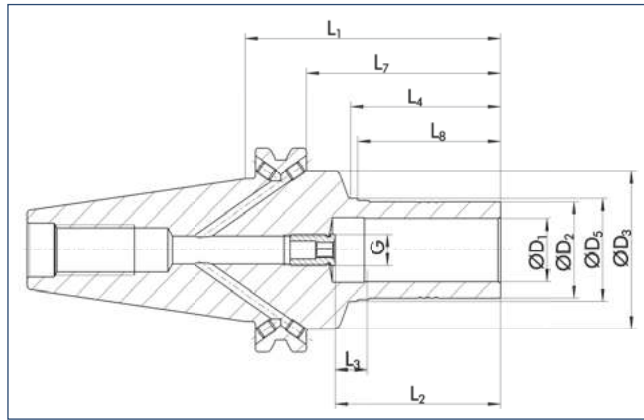


Length measuring devices
see chapter accessories

Disp. de medición de la longitud
consulte el capítulo sobre accesorios

TRIBOS SPF-S CAT 50

short, slim design
with axial length adjustment



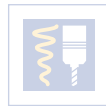
< 0.003 mm



25000 min⁻¹



25000 min⁻¹



Technical data

D ₁ [inch]	ID		D ₂ [mm]	D ₃ [mm]	D ₅ [mm]	L ₁ [mm]	L ₂ [mm]	L ₃ [mm]	L ₄ [mm]	L ₇ [mm]	L ₈ [mm]	G	M _{min} [Nm]	m [kg]	SRE ID
1/8"	≡														
3/16"	≡														
1/4"	≡														
5/16"	≡														
3/8"	0205433	•	15.0	69.85	17.1	95.0	42.0	10.0	42.0	76.0	40.0	M6	20.0	3.79	0201989
7/16"	≡														
1/2"	0205434	•	20.0	69.85	22.1	95.0	47.0	10.0	49.0	76.0	45.0	M8x1	40.0	3.84	0201991
9/16"	≡														
5/8"	≡														
3/4"	0205436	•	29.0	69.85	31.1	95.0	52.0	10.0	49.0	76.0	45.0	M10x1	120.0	3.99	0201992
1"	0205437	•	36.5	69.85	38.1	95.0	57.0	10.0	52.0	76.0	45.0	M10x1	200.0	4.19	0201993

- ≡ Additional sizes can be clamped with intermediate sleeves
- Can be supplied from stock

- ☑ Design suitable for MQL operations available on request
- ☑ Bore for data carrier as an option

- ℹ Bore on form B are sealed with set screws
Additional sizes and special designs available on request

TRIBOS SPF-S CAT 50

corto, diseño delgado
con ajuste de la longitud axial



Datos técnicos

- ≡ Para sujetar con casquillos intermedios
- Posible suministro de existencias

- ☑ Diseño apto para operaciones MQL disponible a pedido
- ☑ Orificio para portador de datos como opción

- ℹ Orificios en forma B sellados con tornillos de fijación
Tamaños adicionales y diseños especiales disponibles a pedido



Tool extensions
see chapter accessories

Extensiones de herramientas
consulte el capítulo sobre accesorios



Clamping devices
see chapter accessories

Dispositivos de sujeción
consulte el capítulo sobre accesorios



Reduction inserts
see chapter accessories

Insertos de reducción
consulte el capítulo sobre accesorios



Length measuring devices
see chapter accessories

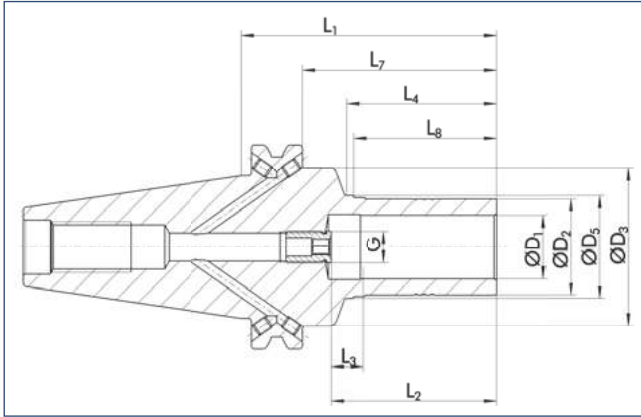
Disp. de medición de la longitud
consulte el capítulo sobre accesorios

TRIBOS SPF-S CAT 50

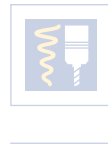
short, slim design
with axial length adjustment

TRIBOS SPF-S CAT 50

corto, diseño delgado
con ajuste de la longitud axial



CAT



Technical data

Datos técnicos

D ₁ [mm]	ID	D ₂ [mm]	D ₃ [mm]	D ₅ [mm]	L ₁ [mm]	L ₂ [mm]	L ₃ [mm]	L ₄ [mm]	L ₇ [mm]	L ₈ [mm]	G	M _{min} [Nm]	m [kg]	SRE ID
10.0	≡													
12.0	0205914	19.0	69.85	21.1	95.0	47.0	10.0	49.0	76.0	45.0	M8x1	30.0	3.84	0201975
14.0	≡													
16.0	≡													
18.0	≡													
20.0	0205916	30.0	69.85	32.1	95.0	52.0	10.0	49.0	76.0	45.0	M10x1	150.0	3.99	0201981
25.0	≡													
32.0	0205918	45.0	69.85	47.1	95.0	61.0	10.0	52.0	76.0	45.0	M10x1	280.0	4.42	0201998

- ≡ Additional sizes can be clamped with intermediate sleeves
- Can be supplied from stock
- 🔧 Design suitable for MQL operations available on request
- 📄 Bore for data carrier as an option
- 📄 Bore on form B are sealed with set screws
Additional sizes and special designs available on request

- ≡ Para sujetar con casquillos intermedios
- Posible suministro de existencias
- 🔧 Diseño apto para operaciones MQL disponible a pedido
- 📄 Orificio para portador de datos como opción
- 📄 Orificios en forma B sellados con tornillos de fijación
Tamaños adicionales y diseños especiales disponibles a pedido



Tool extensions
see chapter accessories

Extensiones de herramientas
consulte el capítulo sobre accesorios



Clamping devices
see chapter accessories

Dispositivos de sujeción
consulte el capítulo sobre accesorios



Reduction inserts
see chapter accessories

Insertos de reducción
consulte el capítulo sobre accesorios

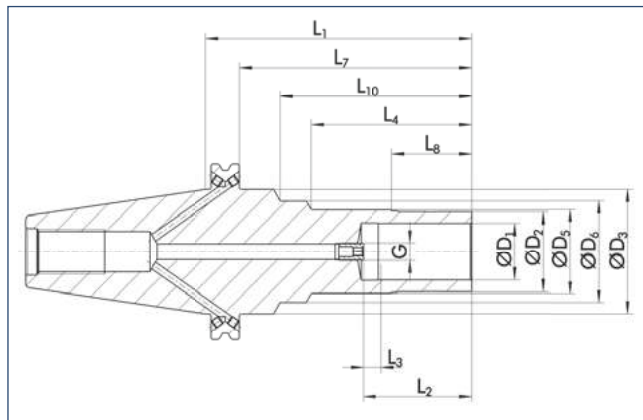


Length measuring devices
see chapter accessories

Disp. de medición de la longitud
consulte el capítulo sobre accesorios

TRIBOS SPF-S CAT 50 L₁=150

long, slim design
with axial length adjustment



TRIBOS SPF-S CAT 50 L₁=150

largo, diseño delgado
con ajuste de la longitud axial



Technical data

Datos técnicos

D ₁ [inch]	ID		D ₂ [mm]	D ₃ [mm]	D ₅ [mm]	D ₆ [mm]	L ₁ [mm]	L ₂ [mm]	L ₃ [mm]	L ₄ [mm]	L ₇ [mm]	L ₈ [mm]	L ₁₀ [mm]	G	M _{min} [Nm]	m [kg]	SRE ID
1/8"	≡																
3/16"	≡																
1/4"	≡																
5/16"	≡																
3/8"	0205493	•	15.0	69.85	18.5	50.5	150.0	42.0	10.0	82.0	131.0	40.0	108.0	M8x1	20.0	3.27	0201989
7/16"	≡																
1/2"	0205494	•	20.0	69.85	22.5	50.5	150.0	47.0	10.0	82.0	131.0	45.0	108.0	M8x1	40.0	3.31	0201991
9/16"	≡																
5/8"	0205495	•	25.0	69.85	27.5	50.5	150.0	48.0	10.0	82.0	131.0	45.0	108.0	M10x1	70.0	3.4	0201977
11/16"	≡																
3/4"	0205496	•	29.0	69.85	32.5	50.5	150.0	52.0	10.0	82.0	131.0	45.0	108.0	M10x1	120.0	3.4	0201992
13/16"	≡																
7/8"	≡																
15/16"	≡																
1"	≡																
1 1/4"	0205498	•	45.0	69.85	50.5		150.0	61.0	10.0	108.0	131.0	45.0		M10x1	250.0	3.49	0201998

- ≡ Additional sizes can be clamped with intermediate sleeves
- Can be supplied from stock

- 🔧 Design suitable for MQL operations available on request
- 🔧 Bore for data carrier as an option

- 📄 Bore on form B are sealed with set screws
Additional sizes and special designs available on request

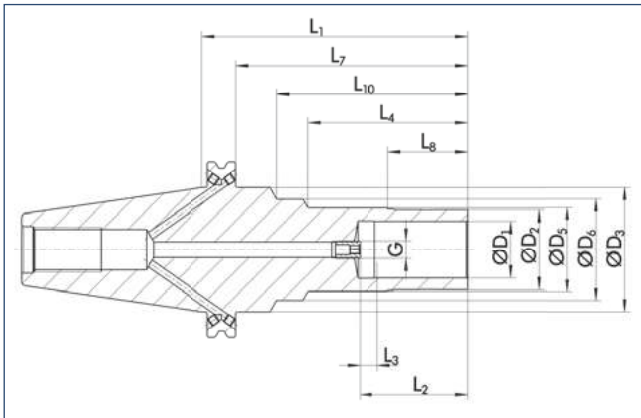
- ≡ Para sujetar con casquillos intermedios
- Posible suministro de existencias

- 🔧 Diseño apto para operaciones MQL disponible a pedido
- 🔧 Orificio para portador de datos como opción

- 📄 Orificios en forma B sellados con tornillos de fijación
Tamaños adicionales y diseños especiales disponibles a pedido

TRIBOS SPF-S CAT 50 L₁=150

long, slim design
with axial length adjustment



TRIBOS SPF-S CAT 50 L₁=150

largo, diseño delgado
con ajuste de la longitud axial



CAT



< 0.006 mm



20000 min⁻¹



25000 min⁻¹



Technical data

Datos técnicos

D ₁ [mm]	ID		D ₂ [mm]	D ₃ [mm]	D ₅ [mm]	D ₆ [mm]	L ₁ [mm]	L ₂ [mm]	L ₃ [mm]	L ₄ [mm]	L ₇ [mm]	L ₈ [mm]	L ₁₀ [mm]	G	M _{min} [Nm]	m [kg]	SRE ID
10.0	≡																
12.0	0205444	•	19.0	69.85	22.5	50.5	150.0	47.0	10.0	82.0	131.0	45.0	108.0	M8x1	30.0	3.27	0201975
14.0	≡																
16.0	≡																
18.0	≡																
20.0	0205446	•	30.0	69.85	32.5	50.5	150.0	52.0	10.0	82.0	131.0	45.0	108.0	M10x1	150.0	3.31	0201981
25.0	≡																
32.0	0205448	•	45.0	69.85	50.5		150.0	61.0	10.0	108.0	131.0	45.0		M10x1	280.0	3.49	0201998

- ≡ Additional sizes can be clamped with intermediate sleeves
- Can be supplied from stock

- 🔧 Design suitable for MQL operations available on request
- 🔧 Bore for data carrier as an option

- 📄 Bore on form B are sealed with set screws
- Additional sizes and special designs available on request

- ≡ Para sujetar con casquillos intermedios
- Posible suministro de existencias

- 🔧 Diseño apto para operaciones MQL disponible a pedido
- 🔧 Orificio para portador de datos como opción

- 📄 Orificios en forma B sellados con tornillos de fijación
- Tamaños adicionales y diseños especiales disponibles a pedido



Tool extensions
see chapter accessories

Extensiones de herramientas
consulte el capítulo sobre accesorios



Clamping devices
see chapter accessories

Dispositivos de sujeción
consulte el capítulo sobre accesorios



Reduction inserts
see chapter accessories

Insertos de reducción
consulte el capítulo sobre accesorios



Length measuring devices
see chapter accessories

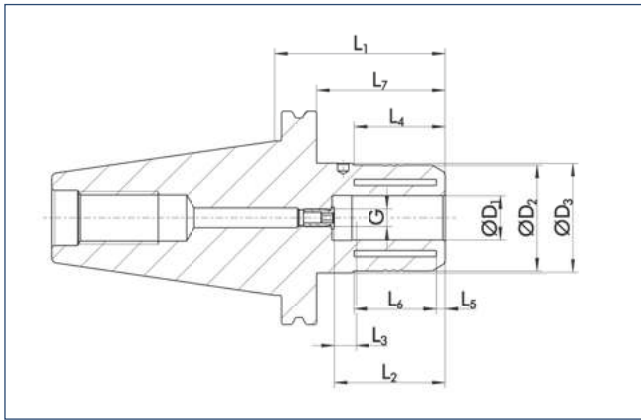
Disp. de medición de la longitud
consulte el capítulo sobre accesorios

SINO-R CAT 50

with axial length adjustment

SINO-R CAT 50

con ajuste de la longitud axial



≤ 0.005 mm



40000 min⁻¹



15000 min⁻¹



✓



✓



✓



✓



✓

Technical data

Datos técnicos

D ₁	ID		D ₂	D ₃	L ₁	L ₂	L ₃	L ₄	L ₅	L ₆	L ₇	G	M _{min}	m
[inch]			[mm]	[mm]	[mm]	[mm]	[mm]	[mm]	[mm]	[mm]	[mm]		[Nm]	[kg]
1/4"	≡													
5/16"	≡													
3/8"	≡													
7/16"	≡													
1/2"	≡													
9/16"	≡													
5/8"	≡													
3/4"	0209634	•	48.5	69.85	95.0	51.0	10.0	42.0	5.0	37.0	76.0	M8x1	450.0	3.4
7/8"	≡													
1"	0209635	•	48.5	69.85	95.0	57.0	10.0	36.0	4.0	38.0	76.0	M8x1	700.0	3.7
1 1/4"	0209636	•	65.0	69.85	90.0	61.0	10.0	47.0	6.0	46.0	71.0	M10x1	850.0	3.9

- ≡ Additional sizes can be clamped with intermediate sleeves
- Can be supplied from stock

Ⓜ Bore for data carrier as an option

ⓘ Optimal for heavy duty milling
Additional sizes and special designs available on request

- ≡ Para sujetar con casquillos intermedios
- Posible suministro de existencias

Ⓜ Orificio para portador de datos como opción

ⓘ Óptimo para fresado de trabajo pesado
Tamaños adicionales y diseños especiales disponibles a pedido



Intermediate sleeves
see chapter accessories

Casquillos intermedios
consulte el capítulo sobre accesorios



Spanner wrenches
see chapter accessories

Llaves de apriete
consulte el capítulo sobre accesorios



"C"-spanners
see chapter accessories

Llaves de gancho
consulte el capítulo sobre accesorios



Sleeve remover
see chapter accessories

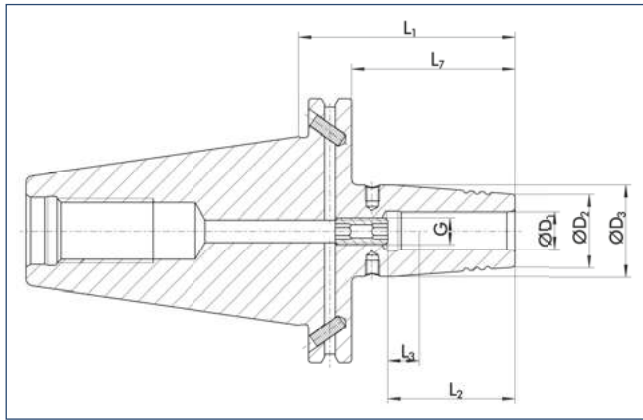
Extractor de casquillos
consulte el capítulo sobre accesorios

CELSIO SSF CAT 50

with axial length adjustment

CELSIO SSF CAT 50

con ajuste de la longitud axial



CAT



< 0.003 mm*



30000 min⁻¹



25000 min⁻¹



Technical data

Datos técnicos

D ₁	D ₂	D ₃	L ₁	L ₂	L ₃	L ₇	G	M _{min}	m
[inch]	ID	[mm]	[mm]	[mm]	[mm]	[mm]		[Nm]	[kg]
1/4"	0208750	21.0	27.0	80.0	36.0	10.0	M5	20.0	2.9
1/4"	0208751	21.0	27.0	130.0	36.0	10.0	M5	20.0	3.0
1/4"	0208752	21.0	27.0	160.0	36.0	10.0	M5	20.0	3.2
5/16"	0208755	21.0	27.0	80.0	36.0	10.0	M6	52.0	2.9
5/16"	0208756	21.0	27.0	130.0	36.0	10.0	M6	52.0	3.0
5/16"	0208757	21.0	27.0	160.0	36.0	10.0	M6	52.0	3.2
3/8"	0208760	24.0	32.0	80.0	42.0	10.0	M8x1	70.0	2.9
3/8"	0208761	24.0	32.0	130.0	42.0	10.0	M8x1	70.0	3.1
3/8"	0208762	24.0	32.0	160.0	42.0	10.0	M8x1	70.0	3.5
7/16"	0208765	24.0	32.0	80.0	42.0	10.0	M8x1	150.0	2.9
7/16"	0208766	24.0	32.0	130.0	42.0	10.0	M8x1	150.0	3.1
7/16"	0208767	24.0	32.0	160.0	42.0	10.0	M8x1	150.0	3.5
1/2"	0208770	24.0	32.0	80.0	47.0	10.0	M10x1	150.0	2.9
1/2"	0208771	24.0	32.0	130.0	47.0	10.0	M10x1	150.0	3.1
1/2"	0208772	24.0	32.0	160.0	47.0	10.0	M10x1	150.0	3.5

• Can be supplied from stock

• Posible suministro de existencias

Design suitable for MQL operations available on request

Diseño apto para operaciones MQL disponible a pedido

Bore for data carrier as an option

Orificio para portador de datos como opción

Additional sizes and special designs available on request

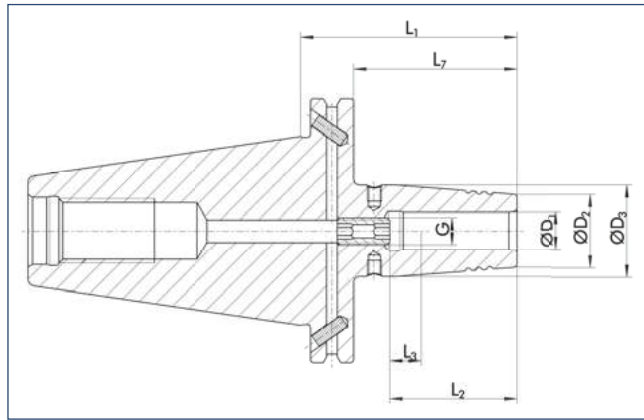
Tamaños adicionales y diseños especiales disponibles a pedido

* Run-out accuracy measured in the clamping diameter according to DIN 69882-8

* Precisión de concentricidad medida en el diámetro de sujeción de acuerdo a DIN 69882-8

CELSIO SSF CAT 50

with axial length adjustment



CELSIO SSF CAT 50

con ajuste de la longitud axial



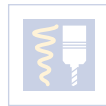
< 0.003 mm*



30000 min⁻¹



25000 min⁻¹



Technical data

Datos técnicos

D ₁ [inch]	ID	D ₂ [mm]	D ₃ [mm]	L ₁ [mm]	L ₂ [mm]	L ₃ [mm]	L ₇ [mm]	G	M _{min} [Nm]	m [kg]
5/8"	0208775	27.0	34.0	80.0	50.0	10.0	61.0	M12x1	300.0	2.9
5/8"	0208776	27.0	34.0	130.0	50.0	10.0	111.0	M12x1	300.0	3.1
5/8"	0208777	27.0	34.0	160.0	50.0	10.0	141.0	M12x1	300.0	3.6
3/4"	0208780	33.0	42.0	80.0	52.0	10.0	61.0	M16x1	420.0	2.9
3/4"	0208781	33.0	42.0	130.0	52.0	10.0	111.0	M16x1	420.0	3.5
3/4"	0208782	33.0	42.0	160.0	52.0	10.0	141.0	M16x1	420.0	4.0
1"	0208785	44.0	53.0	100.0	58.0	10.0	81.0	M16x1	550.0	3.5
1"	0208786	44.0	53.0	130.0	58.0	10.0	111.0	M16x1	550.0	4.5
1"	0208787	44.0	53.0	160.0	58.0	10.0	141.0	M16x1	550.0	4.1
1 1/4"	0208790	44.0	53.0	100.0	58.0	10.0	81.0	M16x1	600.0	3.4
1 1/4"	0208792	44.0	53.0	160.0	58.0	10.0	141.0	M16x1	600.0	4.4

- Can be supplied from stock

- Design suitable for MQL operations available on request
- Bore for data carrier as an option

• Additional sizes and special designs available on request

* Run-out accuracy measured in the clamping diameter according DIN 69882-8

- Posible suministro de existencias

- Diseño apto para operaciones MQL disponible a pedido
- Orificio para portador de datos como opción

• Tamaños adicionales y diseños especiales disponibles a pedido

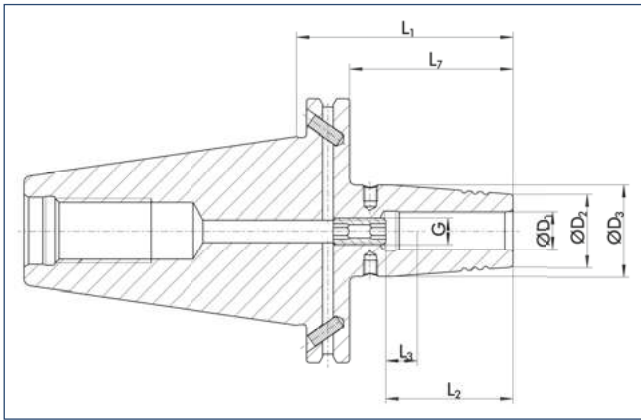
* Precisión de concentricidad medida en el diámetro de sujeción de acuerdo a DIN 69882-8

CELSIO SSF CAT 50

with axial length adjustment

CELSIO SSF CAT 50

con ajuste de la longitud axial



CAT



< 0.003 mm*



30000 min⁻¹



25000 min⁻¹



✓



✓



Technical data

Datos técnicos

D ₁ [mm]	ID	D ₂ [mm]	D ₃ [mm]	L ₁ [mm]	L ₂ [mm]	L ₃ [mm]	L ₇ [mm]	G	M _{min} [Nm]	m [kg]
6.0	0208700	21.0	27.0	80.0	36.0	10.0	61.0	M5	20.0	2.9
6.0	0208701	21.0	27.0	130.0	36.0	10.0	111.0	M5	20.0	3.0
6.0	0208702	21.0	27.0	160.0	36.0	10.0	141.0	M5	20.0	3.2
8.0	0208705	21.0	27.0	80.0	36.0	10.0	61.0	M6	52.0	2.9
8.0	0208706	21.0	27.0	130.0	36.0	10.0	111.0	M6	52.0	3.0
8.0	0208707	21.0	27.0	160.0	36.0	10.0	141.0	M6	52.0	3.2
10.0	0208710	24.0	32.0	80.0	42.0	10.0	61.0	M8x1	70.0	2.9
10.0	0208711	24.0	32.0	130.0	42.0	10.0	111.0	M8x1	70.0	3.1
10.0	0208712	24.0	32.0	160.0	42.0	10.0	141.0	M8x1	70.0	3.5
12.0	0208715	24.0	32.0	80.0	47.0	10.0	61.0	M10x1	150.0	2.9
12.0	0208716	24.0	32.0	130.0	47.0	10.0	111.0	M10x1	150.0	3.1
12.0	0208717	24.0	32.0	160.0	47.0	10.0	141.0	M10x1	150.0	3.5

• Can be supplied from stock

Design suitable for MQL operations available on request

Bore for data carrier as an option

Additional sizes and special designs available on request

* Run-out accuracy measured in the clamping diameter according to DIN 69882-8

• Posible suministro de existencias

Diseño apto para operaciones MQL disponible a pedido

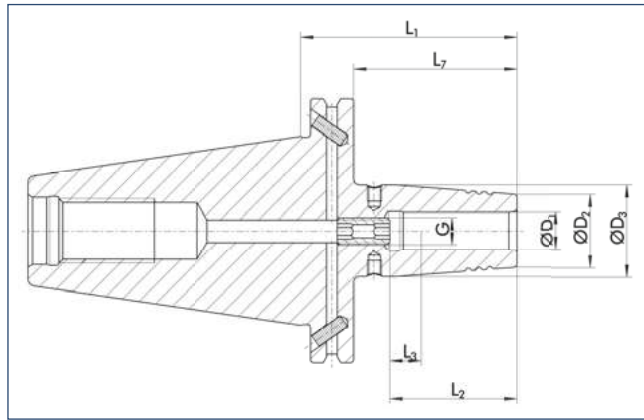
Orificio para portador de datos como opción

Tamaños adicionales y diseños especiales disponibles a pedido

* Precisión de concentricidad medida en el diámetro de sujeción de acuerdo a DIN 69882-8

CELSIO SSF CAT 50

with axial length adjustment



CELSIO SSF CAT 50

con ajuste de la longitud axial



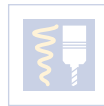
< 0.003 mm*



30000 min⁻¹



25000 min⁻¹



Technical data

Datos técnicos

D ₁ [mm]	ID	D ₂ [mm]	D ₃ [mm]	L ₁ [mm]	L ₂ [mm]	L ₃ [mm]	L ₇ [mm]	G	M _{min} [Nm]	m [kg]
16.0	0208725	27.0	34.0	80.0	50.0	10.0	61.0	M12x1	300.0	2.9
16.0	0208726	27.0	34.0	130.0	50.0	10.0	111.0	M12x1	300.0	3.1
16.0	0208727	27.0	34.0	160.0	50.0	10.0	141.0	M12x1	300.0	3.6
20.0	0208735	33.0	42.0	80.0	52.0	10.0	61.0	M16x1	420.0	2.9
20.0	0208736	33.0	42.0	130.0	52.0	10.0	111.0	M16x1	420.0	3.5
20.0	0208737	33.0	42.0	160.0	52.0	10.0	141.0	M16x1	420.0	4.0
25.0	0208740	44.0	53.0	100.0	58.0	10.0	81.0	M16x1	550.0	3.5
25.0	0208741	44.0	53.0	130.0	58.0	10.0	111.0	M16x1	550.0	4.5
25.0	0208742	44.0	53.0	160.0	58.0	10.0	141.0	M16x1	550.0	4.1
32.0	0208745	44.0	53.0	100.0	58.0	10.0	81.0	M16x1	600.0	3.4
32.0	0208746	44.0	53.0	130.0	58.0	10.0	111.0	M16x1	600.0	3.9
32.0	0208747	44.0	53.0	160.0	58.0	10.0	141.0	M16x1	600.0	4.4

- Can be supplied from stock

- Design suitable for MQL operations available on request
- Bore for data carrier as an option

- Additional sizes and special designs available on request

* Run-out accuracy measured in the clamping diameter according to DIN 69882-8

- Posible suministro de existencias

- Diseño apto para operaciones MQL disponible a pedido
- Orificio para portador de datos como opción

- Tamaños adicionales y diseños especiales disponibles a pedido

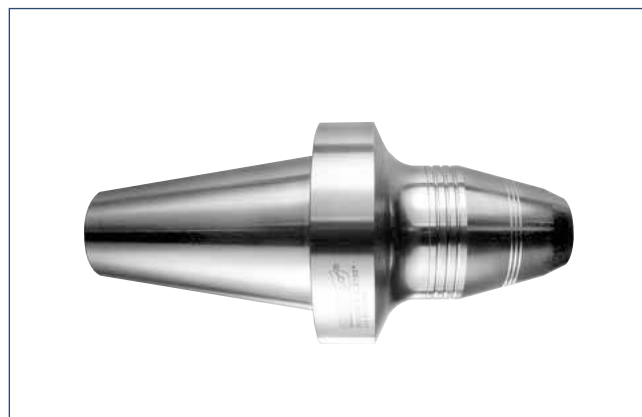
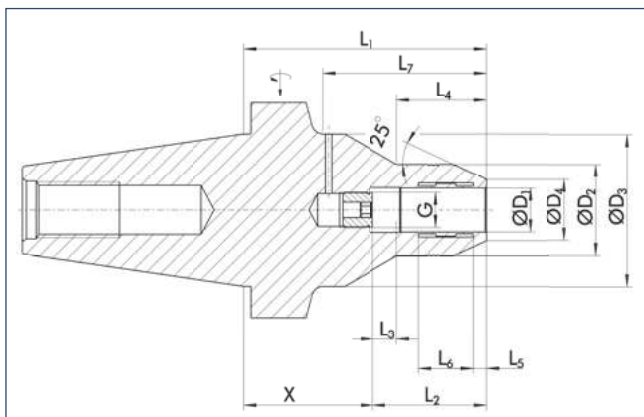
* Precisión de concentricidad medida en el diámetro de sujeción de acuerdo a DIN 69882-8

TENDO G-CAT 50

short, rigid design
with axial length adjustment

TENDO G-CAT 50

corto, diseño rígido
con ajuste de la longitud axial



<math>< 0.003 \text{ mm}</math>



Technical data

Datos técnicos

D ₁ [inch]	ID		D ₂ [mm]	D ₃ [mm]	D ₄ [mm]	X [mm]	L ₁ [mm]	L ₂ [mm]	L ₃ [mm]	L ₄ [mm]	L ₅ [mm]	L ₆ [mm]	L ₇ [mm]	G	m [kg]
3/8"	28000629	•	30.5	70.0	16.0	64.5	111.0	44.8	10.0	35.0	6.0	17.0	79.0	M6	2.7
1/2"	28000630	•	36.0	70.0	20.0	63.5	111.0	46.0	10.0	37.0	6.0	19.0	79.0	M10x1	2.7
5/8"	28000631	•	36.8	70.0	22.0	63.5	111.0	47.5	10.0	39.0	6.0	22.0	79.0	M10x1	2.7
3/4"	28000632	•	42.0	70.0	28.0	57.5	111.0	52.0	10.0	41.0	6.0	24.0	79.0	M16x1	2.8
7/8"	28000633		45.2	70.0	31.0	46.5	111.0	52.0	10.0	41.0	6.0	24.0	79.0	M16x1	2.8
1"	28000634	•	48.0	70.0	34.0	44.5	111.0	63.0	10.0	52.0	6.0	30.0	79.0	M16x1	2.8
1 1/4"	28000635	•	54.0	70.0	40.0	48.0	111.0	63.0	10.0	55.5	6.5	38.5	79.0	M16x1	4.1

- ➡ Additional sizes can be clamped with intermediate sleeves
- Can be supplied from stock

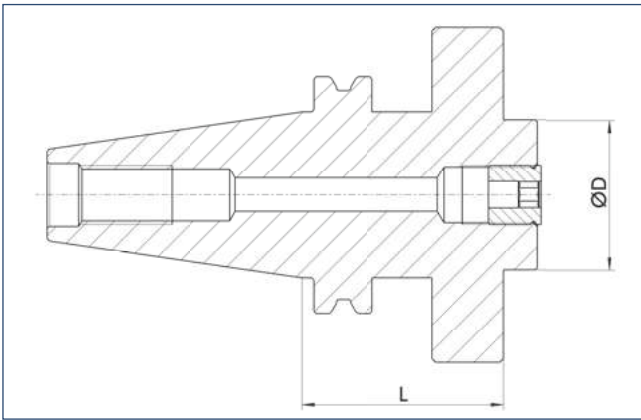
- ➡ Para sujetar con boquillas intermedias
- Posible suministro de existencia

📄 Additional sizes and special designs available on request

📄 Tamaños adicionales y diseños especiales disponibles sobre pedido

TENDO Flange – CAT Adaptor

TENDO Brida – CAT-Adaptador



<math>< 0.003 \text{ mm}</math>



Technical data

Datos técnicos

ID		D [mm]	L [mm]	G
28000184	•	40.0	54.0	M16x1
28000185	•	40.0	56.0	M16x1

- ☰ Additional sizes can be clamped with intermediate sleeves
- Can be supplied from stock

- ☰ Para sujetar con boquillas intermedias
- Posible suministro de existencia

ℹ Additional sizes and special designs available on request

ℹ Tamaños adicionales y diseños especiales disponibles sobre pedido



Intermediate sleeves

see chapter accessories

Boquillas intermedias

consulte el capítulo sobre accesorios



Sleeve remover

see chapter accessories

Extractor de casquillos

consulte el capítulo sobre accesorios



Further accessories

see chapter accessories

Accesorios adicionales

consulte el capítulo sobre accesorios