



TOOLING

DRIVEN TOOLS

Designed, manufactured, and assembled in Italy
Angular contact bearings + Taper roller bearings
Gleason spiral bevel gears
Corrosion resistant steel body
2 year warranty



NOW AVAILABLE FROM STOCK



DMG MORI



DOOSAN



HAAS



MAZAK

WE ALSO INVITE INQUIRIES FOR OKUMA, NAKAMURA, MIYANO, BIGLIA

Distributed by:



**COMPLETE
METALWORKING
SOLUTIONS**

(800) 991-4225

www.ahbinc.com

ISO Certified

customerservice@ahbinc.com

Driven tools for CNC turning centers allow milling, drilling, and tapping operations on the lathes without additional parts handling. Also in this case GS can supply a wide range of types in order to equip the CNC lathes and turrets of the most popular builders on the market with an unbeatable price/quality ratio.

Main Technical Features

- Main body designed to maximize rigidity and reduce vibration
- Specially treated corrosion resistant steel body
- Angular contact bearings + taper roller bearings on output spindle for better rigidity and longer life
- Gleason spiral bevel gears with completely ground involute form

- Rated to 70Nm torque and 6000 rpm
- Internal coolant option - up to 100bar
- 2 Year Warranty

▼ Direction of rotation is opposite to the machine spindle

▲ Direction of rotation is the same as the machine spindle

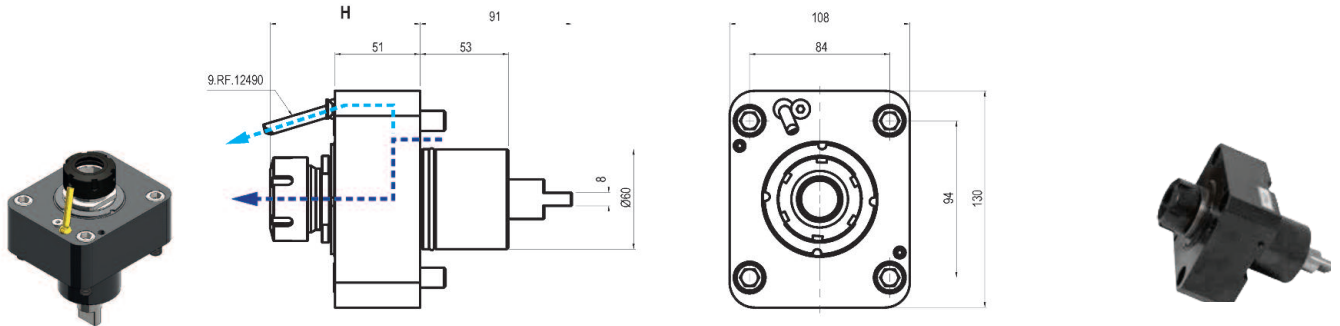
Driven Tools For DMG / MORI SEKI Lathes

Standard Equipment

- Hexagonal tool shaft lock wrench
- Cooling nozzle
- Nozzle lock screws
- Driven tool locking screws
- O-ring

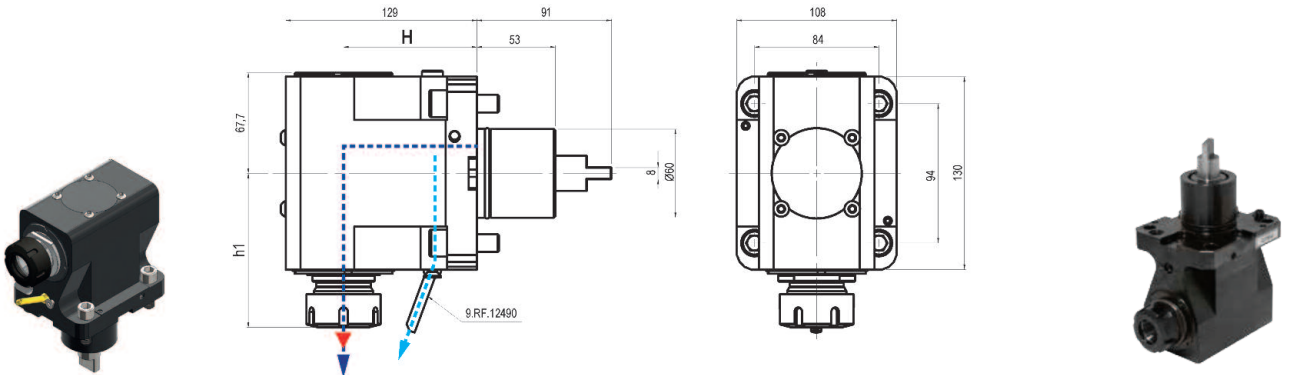
NLX 1500 - 2000 - 3000

Axial - Collet Chuck



Model	Orient	Rotation	Turret	Output	Int. Coolant	Nm	Rpm	Gage (H) Length (mm)	Code No.	Price \$
99.MS.A59	AX	▼	NL60	ER 32	-	60	10,000	Max 89.9	381-504	1,564.10
99.MS.A60	AX	▲	NL60	ER 32	• 80bar	60	10,000	Max 89.9	381-505	2,314.20

Radial - Collet Chuck



Model	Orient	Rotation	Turret	Output	Int. Coolant	Nm	Rpm	Gage Length (mm)	Code No.	Price \$
99.MS.A72	RD	▼	NL60	ER 32	-	60	10,000	90	381-506	3,351.60
99.MS.A73	RD	▲	NL60	ER 32	• 80bar	60	10,000	90	381-507	3,750.60

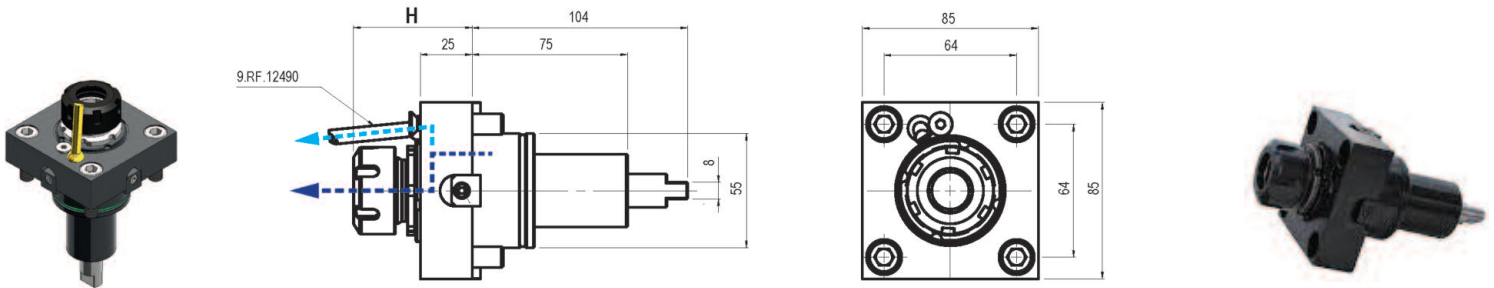
Driven Tools For DOOSAN Lathes

Standard Equipment

- Hexagonal tool shaft lock wrench
- Cooling nozzle
- Nozzle lock screws
- Driven tool locking screws
- O-ring

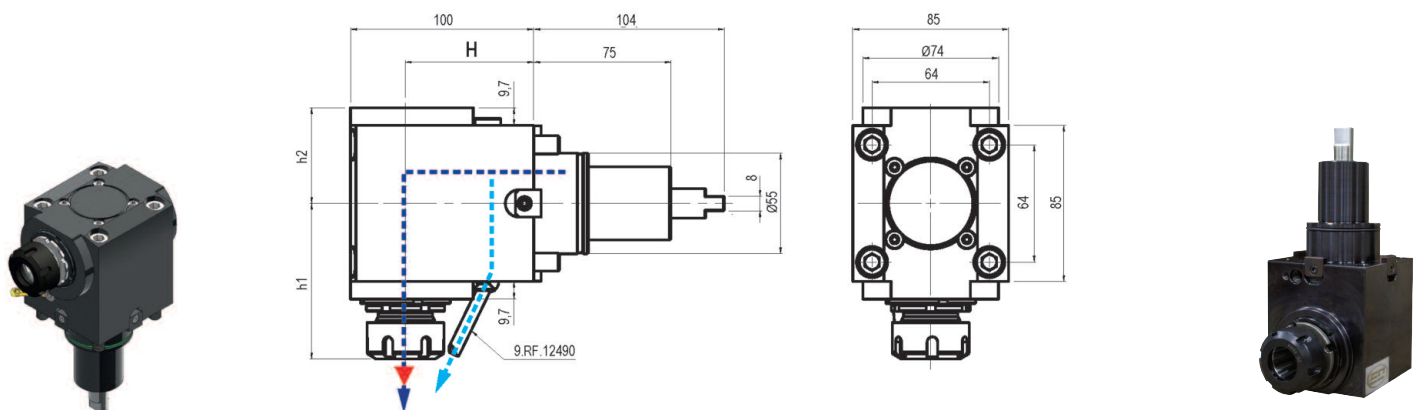
PUMA 230 - 240 - 280 M-MS

Axial - Collet Chuck



Model	Orient	Rotation	Turret	Output	Int. Coolant	Nm	Rpm	Gage Length (mm)	Code No.	Price \$
99.DS.A01	AX	▼	BMT55	ER 25	-	40	8,000	57.2	381-512	1,356.60
99.DS.A02	AX	▼	BMT55	ER 25	• 80bar	40	8,000	57.2	381-513	1,556.10

Radial - Collet Chuck



Model	Orient	Rotation	Turret	Output	Int. Coolant	Nm	Rpm	Gage Length (mm)	Code No.	Price \$
99.DS.A11	RD	▼	BMT55	ER 25	-	40	8,000	70	381-514	2,553.60
99.DS.A12	RD	▼	BMT55	ER 25	• 80bar	40	8,000	70	381-515	3,016.50

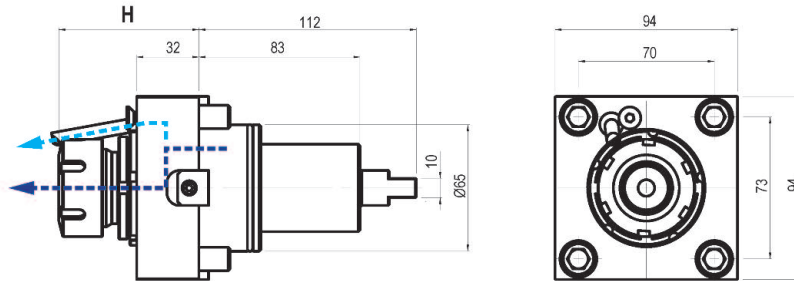
Driven Tools For DOOSAN Lathes

Standard Equipment

- Hexagonal tool shaft lock wrench
- Cooling nozzle
- Nozzle lock screws
- Driven tool locking screws
- O-ring

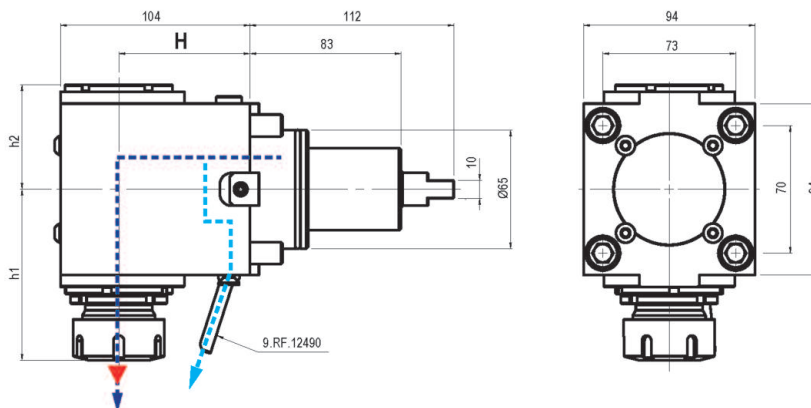
**PUMA 230 - 240 - 280 M-MS
MX2000 / X2500 / VT450 VT450TM**

Axial - Collet Chuck



Model	Orient	Rotation	Turret	Output	Int. Coolant	Nm	Rpm	Gage Length (mm)	Code No.	Price \$
99.DS.A41	AX	▼	BMT65	ER 32	-	70	6,000	72.5	381-516	1,596.00
99.DS.A42	AX	▼	BMT65	ER 32	• 70bar	70	6,000	72.5	381-517	1,835.40

Radial - Collet Chuck



Model	Orient	Rotation	Turret	Output	Int. Coolant	Nm	Rpm	Gage Length (mm)	Code No.	Price \$
99.DS.A51	RD	▼	BMT65	ER 32	-	70	6,000	72	381-518	2,681.30
99.DS.A52	RD	▼	BMT65	ER 32	• 70bar	70	6,000	72	381-519	3,176.10

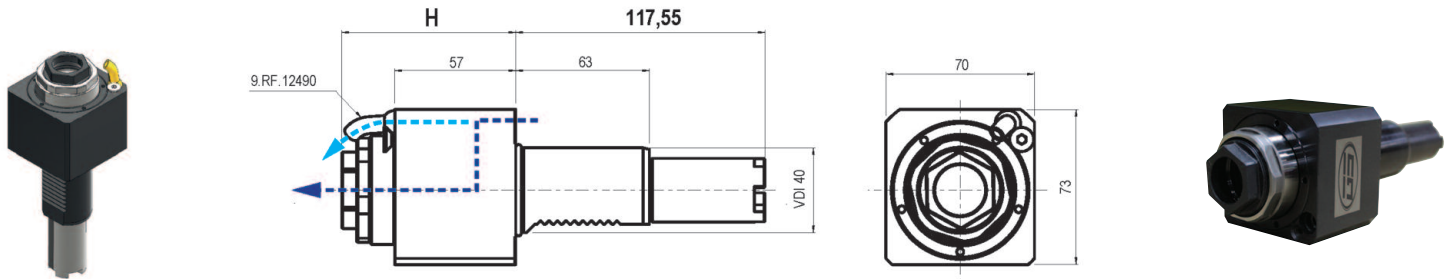
Driven Tools For HAAS Lathes

Standard Equipment

- Hexagonal tool shaft lock wrench
- Cooling nozzle
- Nozzle lock screws

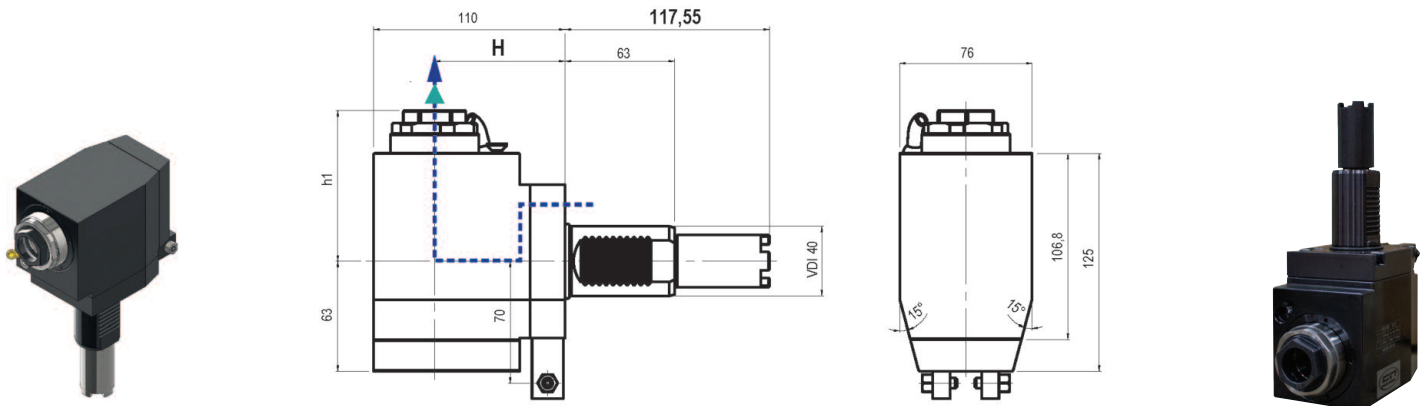
STANDARD VDI 40 TURRET SL40-ST20/30 HYBRID TURRET SL20/30 - TL15/25 HAAS TURRET SL20/30

Axial - Collet Chuck



Model	Orient	Rotation	Turret	Output	Int. Coolant	Nm	Rpm	Gage Length (mm)	Code No.	Price \$
99.HA.590082	AX	▼	VDI40	ER 32	-	63	6,000	82.1	381-500	1,181.10
99.HA.590082B	AX	▼	VDI40	ER 32	• 25bar	63	6,000	82.1	381-501	1,476.30

Radial - Collet Chuck



Model	Orient	Rotation	Turret	Output	Int. Coolant	Nm	Rpm	Gage Length (mm)	Code No.	Price \$
99.HA.590084	RD	▼	VDI40	ER-32	-	63	6,000	Max. 75	381-502	2,218.50
99.HA.590084B	RD	▼	VDI40	ER-32	• 25bar	63	6,000	Max. 75	381-503	2,806.30

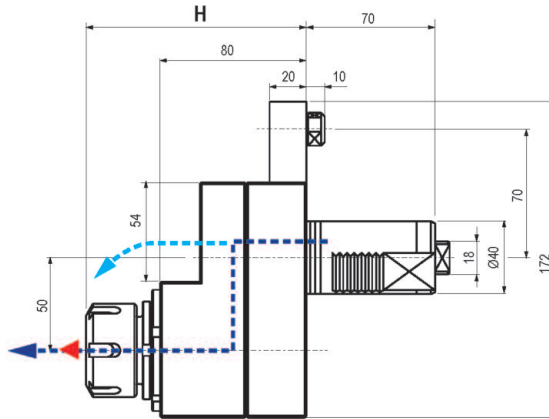
Driven Tools For MAZAK Lathes

Standard Equipment

- Hexagonal tool shaft lock wrench
- Cooling nozzle
- Nozzle lock screws
- O-ring

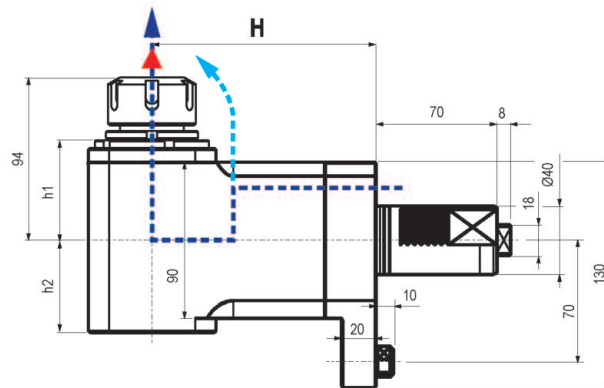
QUICK TURN NEXUS QTN 200/250 SUPER QUADREX TURN SQT 15/18 - 200/250 12 STATION TURRET

Offset Axis - Collet Chuck



Model	Orient	Rotation	Turret	Output	Int. Coolant	Nm	Rpm	Gage Length (mm)	Code No.	Price \$
99.MZ.A58	Off-AX	▼	QTN2-40	ER-32	-	80	6,000	50	381-508	2,074.80
99.MZ.A59	Off-AX	▼	QTN2-40	ER-32	• 80bar	80	6,000	116	381-509	3,192.00

Radial - Collet Chuck

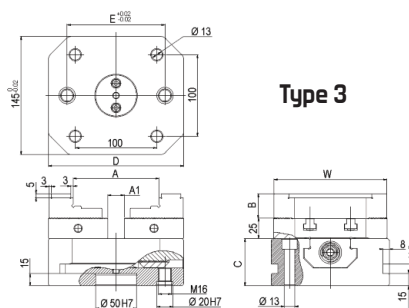
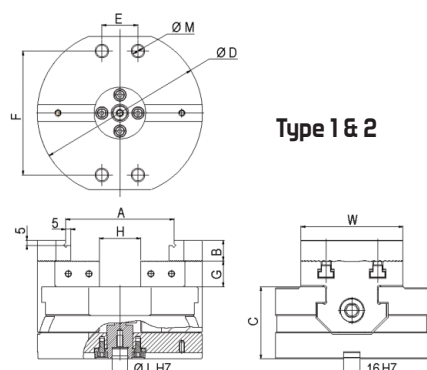
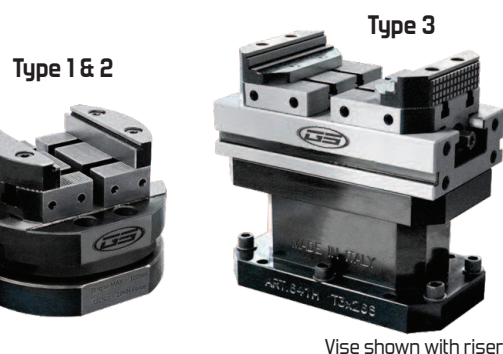


Model	Orient	Rotation	Turret	Output	Int. Coolant	Nm	Rpm	Gage Length (mm)	Code No.	Price \$
99.MZ.A65	RD	▼	QTN2-40	ER-32	-	80	6,000	130	381-510	2,217.20
99.MZ.A66	RD	▼	QTN2-40	ER-32	• 80bar	80	6,000	130	381-511	2,926.00

Multi-tasking Modular Vises For 5-Axis Machining Centres

The MULTITASKING range of vises has been specially designed for 5-axis machines. Working on 5 sides of the workpiece, it allows the best optimization of the machining cycle. Thanks to the compact design this kind of vise can be installed on all machining centers. The use of GRIP jaws is strongly recommended with multitasking vises.

- Self-centering or eccentric
- Eccentric jaw adjustment in steps of 2mm
- Highest accuracy in positioning and alignment ($\pm 0.02\text{mm}$) due to ground rack teeth on both the base and the fixed jaws
- Minimum deflection
- Solid, rigid construction and maximum clamping ratio to the total length
- Positioning through ground holes or keyways
- All case hardened to HRC60 for durability



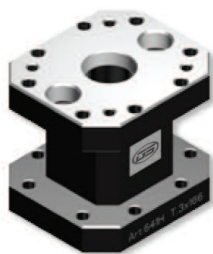
	Type 1	Type 2	Type 3x166	Type 3x266
Code No.	382-520	382-522	382-524	382-526
Price \$	1,906.20	2,541.40	2,922.70	3,049.80
A	74	104	108	208
A1	-	-	20	60
W	74	99	138	138
B	15	20	30	30
C	50	70	58	58
ØD/D	120	160	166	266
E	5	35	120	200
F	92	120	-	-
G	20	25	-	-
H	20	40	-	-
ØL H7	20	20	-	-
M	9	11	-	-
kg	4.9	11	13	20
kN	16	20	30	30

Risers

- Allow greater access to machine hard to reach areas of the workpiece

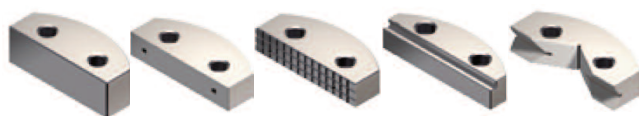


Type 1



Type 3x166

Also available: Smooth, Soft, Serrated, Step, Prismatic, and Grip Jaws



Model	Length (mm)	Width (mm)	Height (mm)	Code No	Price \$
Type 1	Ø 119	-	130	382-521	1,244.90
Type 2	Ø 158	-	130	382-523	1,791.90
Type 3x166	166	145	145	382-525	2,611.50
Type 3x266	266	125	145	382-527	3,351.70

Alternate slide designs are available by request. Risers also available in 50, 75, & 100mm heights.

Call today for more information or to receive a quote.



TOOLING



Pricing valid while quantities last or until further notice.



Sowa Tool & Machine Co. Ltd.
500 Manitou Drive
Kitchener, Ontario
N2C 1L3

Ohio Branch
416 W. Dussel Drive
Maumee, OH
43537

Serving The Metalworking Industry Since 1960



Toll Free: 1-800-265-8221
Phone: (519) 748-5750
Fax: (519) 748-9304
Email: sales@sowatool.com
web: www.sowatool.com

Printed in Canada