



INTRODUCING DUAL CONTACT HOLDERS & DIRECT COOLANT HOLDERS

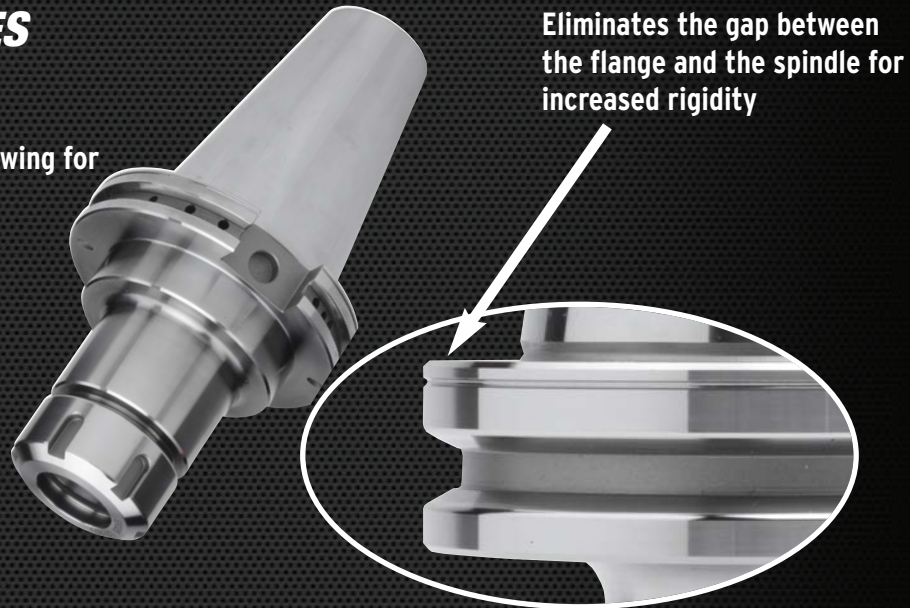
DUAL CONTACT HOLDERS & CHUCKS FOR DUAL CONTACT SPINDLES

Features:

- Improves rigidity and reduced vibration allowing for increased feed rates and increased tool life.
- Premium Balanced up to 30,000 rpm
- DIN Coolant option - standard
- All Ground Body
- 100% Forged Construction

DUAL CONTACT HOLDERS:

CAT Endmill Holders
CAT Shell Mill Holders
CAT ER Collet Chucks
CAT Milling Chucks



DIRECT COOLANT END MILL HOLDERS NOW 3 COOLANT OPTIONS ALL IN ONE!

Features:

- Coolant thru the spindle
- DIN Coolant thru flange option
- Coolant thru the body
- Premium Balanced up to 30,000 rpm
- All Ground Body
- 100% Forged Construction

DIRECT COOLANT ENDMILL HOLDERS:

CAT Endmill Holders
BT Endmill Holders
HSK Endmill Holders

Coolant thru slots for directing coolant onto the tool.

O-Ring Seal for Non Direct Coolant Operations.



CAT40 DUAL CONTACT End Mill Holders

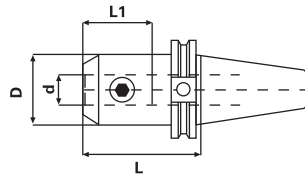
New

FOR DUAL CONTACT SPINDLES

- Improves rigidity and reduced vibration allowing for increased feed rates and increased tool life.
- DIN Coolant option - standard
- All Ground Body
- 100% Forged Construction



Complete with certificate



CAT 40
Premium
Balanced
30x
RPM

Taper	Hole Dia. (d)	Gauge Length (L)	L1	D	Set Screw	Code No.
CT40	1/2"	2.50"	1.50"	1.38"	7/16-20	521-026
CT40	1/2"	4.00"	1.50"	1.38"	7/16-20	521-028
CT40	1/2"	5.00"	1.50"	1.38"	7/16-20	521-030
CT40	5/8"	3.00"	1.61"	1.65"	9/16-18	521-034
CT40	5/8"	4.00"	1.61"	1.65"	9/16-18	521-036
CT40	5/8"	5.50"	1.61"	1.65"	9/16-18	521-038
CT40	3/4"	3.00"	1.77"	1.75"	5/8-18	521-042
CT40	3/4"	4.00"	1.77"	1.75"	5/8-18	521-044
CT40	3/4"	5.50"	1.77"	1.75"	5/8-18	521-046
CT40	1"	2.00"	2.36"	2.36"	3/4-16	521-054
CT40	1"	4.00"	2.36"	2.36"	3/4-16	521-056
CT40	1"	6.00"	2.36"	2.36"	3/4-16	521-058
CT40	1-1/4"	2.00"*	2.28"	2.25"	3/4-16	521-060
CT40	1-1/4"	4.00"	2.55"	2.48"	3/4-16	521-062
CT40	1-1/4"	6.00"	2.55"	2.48"	3/4-16	521-064
CT40	1-1/2"	4.50"	2.55"	2.99"	3/4-16	521-066

CAT50 DUAL CONTACT End Mill Holders

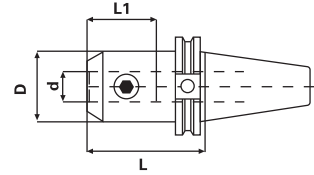
New

FOR DUAL CONTACT SPINDLES

- Improves rigidity and reduced vibration allowing for increased feed rates and increased tool life.
- DIN Coolant option - standard
- All Ground Body
- 100% Forged Construction



Complete with certificate



CAT 50
Premium
Balanced
25x
RPM

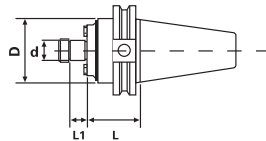
Taper	Hole Dia. (d)	Gauge Length (L)	L1	D	Set Screw	Code No.
CT50	1/2"	4.00"	1.50"	1.38"	7/16-20	521-120
CT50	1/2"	6.00"	1.50"	1.38"	7/16-20	521-122
CT50	5/8"	4.00"	1.61"	1.65"	9/16-18	521-130
CT50	5/8"	6.00"	1.61"	1.65"	9/16-18	521-132
CT50	3/4"	3.00"	1.77"	1.89"	5/8-18	521-138
CT50	3/4"	6.00"	1.77"	1.89"	5/8-18	521-140
CT50	3/4"	6.00"	1.77"	1.89"	5/8-18	521-142
CT50	1"	4.00"	2.36"	2.36"	3/4-16	521-154
CT50	1"	6.00"	2.36"	2.36"	3/4-16	521-156
CT50	1"	8.00"	2.36"	2.36"	3/4-16	521-158
CT50	1-1/4"	4.00"	2.55"	2.48"	3/4-16	521-162
CT50	1-1/4"	6.00"	2.55"	2.48"	3/4-16	521-164
CT50	1-1/4"	8.00"	2.55"	2.48"	3/4-16	521-166
CT50	1-1/2"	4.50"	2.83"	2.99"	3/4-16	521-170
CT50	1-1/2"	7.00"	2.83"	2.99"	3/4-16	521-172
CT50	2"	5.37"	3.34"	3.74"	1"-14	521-178

CAT40 DUAL CONTACT Shell Mill Holders

New

FOR DUAL CONTACT SPINDLES

- Improves rigidity and reduced vibration allowing for increased feed rates and increased tool life.
- DIN Coolant option - standard
- All Ground Body
- 100% Forged Construction



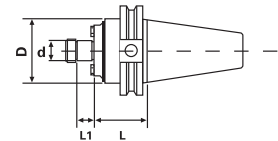
Taper	d	L	D	L1	Key Size	Arbor Thread	Code No.
CT40	3/4"	1.75"	1.75"	0.67"	5/16"	3/8"-24	521-192
CT40	3/4"	4.00"	1.75"	0.67"	5/16"	3/8"-24	521-194
CT40	3/4"	6.00"	1.75"	0.67"	5/16"	3/8"-24	521-195
CT40	1"	1.75"	2.38"	0.67"	3/8"	1/2"-20	521-196
CT40	1"	4.00"	2.38"	0.67"	3/8"	1/2"-20	521-198
CT40	1"	6.00"	2.38"	0.67"	3/8"	1/2"-20	521-199
CT40	1-1/4"	2.00"	2.88"	0.67"	1/2"	5/8"-18	521-200
CT40	1-1/4"	4.00"	2.88"	0.67"	1/2"	5/8"-18	521-202
CT40	1-1/2"	2.00"	3.80"	0.93"	5/8"	3/4"-16	521-204
CT40	1-1/2"	4.00"	3.80"	0.93"	5/8"	3/4"-16	521-206

CAT50 DUAL CONTACT Shell Mill Holders

New

FOR DUAL CONTACT SPINDLES

- Improves rigidity and reduced vibration allowing for increased feed rates and increased tool life.
- DIN Coolant option - standard
- All Ground Body
- 100% Forged Construction



Taper	d	L	D	L1	Key Size	Arbor Thread	Code No.
CT50	3/4"	1.75"	2.00"	0.67"	5/16"	3/8"-24	521-208
CT50	3/4"	4.00"	2.00"	0.67"	5/16"	3/8"-24	521-210
CT50	3/4"	6.00"	2.00"	0.67"	5/16"	3/8"-24	521-212
CT50	1"	1.75"	2.75"	0.69"	3/8"	1/2"-20	521-216
CT50	1"	4.00"	2.75"	0.69"	3/8"	1/2"-20	521-218
CT50	1"	6.00"	2.75"	0.69"	3/8"	1/2"-20	521-220
CT50	1"	8.00"	2.75"	0.69"	3/8"	1/2"-20	521-222
CT50	1-1/4"	1.75"	2.88"	0.69"	1/2"	5/8"-18	521-224
CT50	1-1/4"	4.00"	2.88"	0.69"	1/2"	5/8"-18	521-226
CT50	1-1/4"	6.00"	2.88"	0.69"	1/2"	5/8"-18	521-228
CT50	1-1/4"	8.00"	2.88"	0.69"	1/2"	5/8"-18	521-230
CT50	1-1/2"	2.00"	3.80"	0.93"	5/8"	3/4"-16	521-232
CT50	1-1/2"	4.00"	3.80"	0.93"	5/8"	3/4"-16	521-234
CT50	1-1/2"	6.00"	3.80"	0.93"	5/8"	3/4"-16	521-236
CT50	1-1/2"	8.00"	3.80"	0.93"	5/8"	3/4"-16	521-238
CT50	2"	2.00"	4.38"	0.93"	3/4"	1"-14	521-240
CT50	2"	4.00"	4.38"	0.93"	3/4"	1"-14	521-242

CAT40 DUAL CONTACT ER Collet Chucks

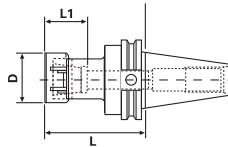
New

FOR DUAL CONTACT SPINDLES

- Improves rigidity and reduced vibration allowing for increased feed rates and increased tool life.
- DIN Coolant option - standard
- All Ground Body
- 100% Forged Construction



Complete with certificate



CAT 40
Premium
Balanced
30x
RPM

Taper	Collet Series	Collet Range	L	L1	D	Code No.
CT40	ER16	.019-.406"	2.50"	0.87"	1.26"	521-406
CT40	ER16	.019-.406"	4.00"	0.87"	1.26"	521-405
CT40	ER16	.019-.406"	6.00"	0.87"	1.26"	521-410
CT40	ER32	.078-.787"	3.13"	1.34"	1.97"	521-424
CT40	ER32	.078-.787"	4.00"	1.34"	1.97"	521-423
CT40	ER32	.078-.787"	6.00"	1.34"	1.97"	521-425

CAT50 DUAL CONTACT ER Collet Chucks

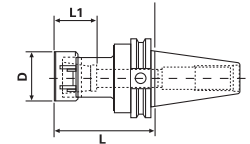
New

FOR DUAL CONTACT SPINDLES

- Improves rigidity and reduced vibration allowing for increased feed rates and increased tool life.
- DIN Coolant option - standard
- All Ground Body
- 100% Forged Construction



Complete with certificate



CAT 50
Premium
Balanced
25x
RPM

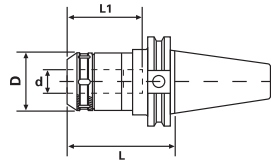
Taper	Collet Series	Collet Range	L	L1	D	Code No.
CT50	ER16	.019-.406"	4.12"	0.87"	1.26"	521-432
CT50	ER16	.019-.406"	6.00"	0.87"	1.26"	521-434
CT50	ER16	.019-.406"	8.00"	0.87"	1.26"	521-436
CT50	ER32	.078-.787"	4.00"	1.34"	1.97"	521-454
CT50	ER32	.078-.787"	6.00"	1.34"	1.97"	521-456
CT50	ER32	.078-.787"	8.00"	1.34"	1.97"	521-458

CAT 40 Taper Milling Chucks - DUAL CONTACT

New

FOR DUAL CONTACT SPINDLES

- Improves rigidity and reduced vibration allowing for increased feed rates and increased tool life.
- DIN coolant thru the flange at no extra charge
- Rough milling or 'hogging' operations
- Improved tool life over regular end mill holders
- '360°' gripping contact
- Extreme rigidity over taper collets
- 0.0002" TIR for maximum tool life and accuracy



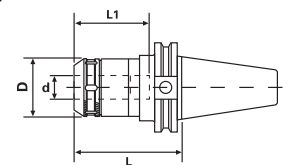
Taper	Collet Series	Collet Range	d	L	L1	D	Code No.
CT40	GS 3/4"	.125-.750"	.750"	3.54"	3.15"	2.05"	521-253
CT40	GS 1"	.125-1.00"	1.00"	3.54"	3.15"	2.41"	521-255
CT40	GS 1-1/4"	.187-1.25"	1.25"	3.54"	3.34"	2.88"	521-257

CAT 50 Taper Milling Chucks - DUAL CONTACT

New

FOR DUAL CONTACT SPINDLES

- Improves rigidity and reduced vibration allowing for increased feed rates and increased tool life.
- DIN coolant thru the flange at no extra charge
- Rough milling or 'hogging' operations
- Improved tool life over regular end mill holders
- '360°' gripping contact
- Extreme rigidity over taper collets
- 0.0002" TIR for maximum tool life and accuracy



Taper	Collet Series	Collet Range	d	L	L1	D	Code No.
CT50	GS 3/4"	.125-.750"	.750"	4.14"	3.15"	2.05"	521-260
CT50	GS 1"	.125-1.00"	1.00"	4.14"	3.15"	2.41"	521-264
CT50	GS 1-1/4"	.187-1.25"	1.25"	4.14"	4.73"	2.88"	521-266

CAT40 DIRECT COOLANT End Mill Holders

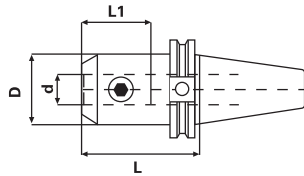
New

NOW 3 COOLANT OPTIONS ALL IN ONE!

- Coolant thru the spindle
- DIN Coolant thru flange option
- Coolant thru the body
- All Ground Body
- 100% Forged Construction



Complete with certificate



CAT 40
Premium
Balanced
30x
RPM

Taper	Hole Dia. (d)	Gauge Length (L)	L1	D	Set Screw	Code No.
CT40	1/8"	1.35"*	0.63"	0.75"	8-32	522-002
CT40	1/8"	2.50"	0.63"	0.75"	8-32	522-004
CT40	1/8"	4.00"	0.63"	0.75"	8-32	522-006
CT40	3/16"	1.38"*	0.63"	0.75"	10-32	522-008
CT40	3/16"	2.50"	0.86"	0.75"	10-32	522-010
CT40	3/16"	4.00"	0.86"	0.75"	10-32	522-012
CT40	1/4"	1.38"*	1.18"	0.79"	1/4-28	522-014
CT40	1/4"	2.50"	1.10"	0.79"	1/4-28	522-016
CT40	1/4"	4.00"	1.10"	0.79"	1/4-28	522-018
CT40	1/4"	9.00"	1.10"	0.79"	1/4-28	522-020
CT40	5/16"	1.38"*	1.34"	0.87"	5/16-24	522-022
CT40	5/16"	2.50"	1.26"	0.87"	5/16-24	522-024
CT40	5/16"	4.00"	1.26"	0.87"	5/16-24	522-026
CT40	5/16"	9.00"	1.26"	0.87"	5/16-24	522-028
CT40	3/8"	1.38"*	1.34"	1.00"	3/8-24	522-030
CT40	3/8"	2.50"	1.26"	1.00"	3/8-24	522-032
CT40	3/8"	4.00"	1.26"	1.00"	3/8-24	522-034
CT40	3/8"	5.00"	1.26"	1.00"	3/8-24	522-036
CT40	3/8"	9.00"	1.26"	1.00"	3/8-24	522-038
CT40	7/16"	2.50"	1.50"	1.38"	7/16-20	522-040
CT40	7/16"	4.00"	1.50"	1.38"	7/16-20	522-042
CT40	7/16"	9.00"	1.50"	1.38"	7/16-20	522-044
CT40	1/2"	1.75"*	1.50"	1.38"	7/16-20	522-046
CT40	1/2"	2.50"	1.50"	1.38"	7/16-20	522-048
CT40	1/2"	4.00"	1.50"	1.38"	7/16-20	522-050
CT40	1/2"	5.00"	1.50"	1.38"	7/16-20	522-052
CT40	1/2"	9.00"	1.50"	1.38"	7/16-20	522-054
CT40	5/8"	1.75"*	1.61"	1.65"	9/16-18	522-056
CT40	5/8"	3.00"	1.61"	1.65"	9/16-18	522-058
CT40	5/8"	4.00"	1.61"	1.65"	9/16-18	522-060
CT40	5/8"	5.50"	1.61"	1.65"	9/16-18	522-062
CT40	5/8"	9.00"	1.61"	1.65"	9/16-18	522-064
CT40	3/4"	1.75"*	1.77"	1.89"	5/8-18	522-066
CT40	3/4"	3.00"	1.77"	1.75"	5/8-18	522-068
CT40	3/4"	4.00"	1.77"	1.75"	5/8-18	522-070
CT40	3/4"	5.50"	1.77"	1.75"	5/8-18	522-072
CT40	3/4"	9.00"	1.77"	1.75"	5/8-18	522-074
CT40	7/8"	1.75"*	2.08"	1.94"	5/8-18	522-076
CT40	7/8"	3.50"	2.08"	2.00"	5/8-18	522-078
CT40	1"	2.00"*	2.36"	2.25"	3/4-16	522-080
CT40	1"	4.00"	2.36"	2.36"	3/4-16	522-082
CT40	1"	6.00"	2.36"	2.36"	3/4-16	522-084
CT40	1"	9.00"	2.36"	2.36"	3/4-16	522-086
CT40	1-1/4"	2.00"*	2.28"	2.25"	3/4-16	522-088
CT40	1-1/4"	4.00"	2.55"	2.48"	3/4-16	522-090
CT40	1-1/4"	6.00"	2.55"	2.48"	3/4-16	522-092
CT40	1-1/2"	4.50"	2.55"	2.99"	3/4-16	522-094

CAT50 DIRECT COOLANT End Mill Holders

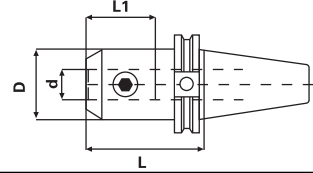
New

NOW 3 COOLANT OPTIONS ALL IN ONE!

- Coolant thru the spindle
- DIN Coolant thru flange option
- Coolant thru the body
- All Ground Body
- 100% Forged Construction



Complete with certificate



CAT 50
Premium
Balanced
25x
RPM

Taper	Hole Dia. (d)	Gauge Length (L)	L1	D	Set Screw	Code No.
CT50	1/4"	1.38"*	1.10"	0.79"	1/4-28	522-100
CT50	1/4"	2.50"	1.10"	0.79"	1/4-28	522-102
CT50	1/4"	4.00"	1.10"	0.79"	1/4-28	522-104
CT50	1/4"	6.00"	1.10"	0.79"	1/4-28	522-106
CT50	1/4"	8.00"	1.10"	0.79"	1/4-28	522-108
CT50	5/16"	2.50"	1.26"	0.87"	5/16-24	522-110
CT50	5/16"	4.00"	1.26"	0.87"	5/16-24	522-112
CT50	5/16"	6.00"	1.26"	0.87"	5/16-24	522-114
CT50	3/8"	1.38"*	1.26"	1.00"	3/8-24	522-116
CT50	3/8"	2.50"	1.26"	1.00"	3/8-24	522-118
CT50	3/8"	4.00"	1.26"	1.00"	3/8-24	522-120
CT50	3/8"	6.00"	1.26"	1.00"	3/8-24	522-122
CT50	3/8"	8.00"	1.26"	1.00"	3/8-24	522-124
CT50	3/8"	14.00"	1.26"	1.00"	3/8-24	522-126
CT50	7/16"	2.50"	1.50"	1.38"	7/16-20	522-128
CT50	7/16"	4.00"	1.50"	1.38"	7/16-20	522-130
CT50	7/16"	6.00"	1.53"	1.38"	7/16-20	522-132
CT50	1/2"	1.75"*	1.50"	1.38"	7/16-20	522-134
CT50	1/2"	2.63"	1.50"	1.38"	7/16-20	522-136
CT50	1/2"	4.00"	1.50"	1.38"	7/16-20	522-138
CT50	1/2"	6.00"	1.50"	1.38"	7/16-20	522-140
CT50	1/2"	8.00"	1.48"	1.38"	7/16-20	522-142
CT50	1/2"	14.00"	1.48"	1.38"	7/16-20	522-144
CT50	9/16"	6.00"	1.61"	1.65"	9/16-18	522-146
CT50	5/8"	1.75"*	1.61"	1.65"	9/16-18	522-148
CT50	5/8"	3.00"	1.61"	1.65"	9/16-18	522-150
CT50	5/8"	4.00"	1.61"	1.65"	9/16-18	522-152
CT50	5/8"	6.00"	1.61"	1.65"	9/16-18	522-154
CT50	5/8"	8.00"	1.57"	1.65"	9/16-18	522-156
CT50	3/4"	1.75"*	1.77"	1.89"	5/8-18	522-158
CT50	3/4"	3.00"	1.77"	1.89"	5/8-18	522-160
CT50	3/4"	4.00"	1.77"	1.89"	5/8-18	522-162
CT50	3/4"	6.00"	1.77"	1.89"	5/8-18	522-164
CT50	3/4"	8.00"	1.77"	1.89"	5/8-18	522-166
CT50	3/4"	12.00"	1.77"	1.89"	5/8-18	522-167
CT50	3/4"	14.00"	1.77"	1.89"	5/8-18	522-168
CT50	7/8"	1.75"*	2.08"	2.00"	5/8-18	522-170
CT50	7/8"	3.75"	2.08"	2.00"	5/8-18	522-172
CT50	7/8"	6.00"	2.08"	2.00"	5/8-18	522-174
CT50	1"	2.00"*	2.36"	2.36"	3/4-16	522-176
CT50	1"	4.00"	2.36"	2.36"	3/4-16	522-178
CT50	1"	6.00"	2.36"	2.36"	3/4-16	522-180
CT50	1"	8.00"	2.36"	2.36"	3/4-16	522-182
CT50	1"	12.00"	2.36"	2.36"	3/4-16	522-183
CT50	1"	14.00"	2.36"	2.36"	3/4-16	522-184
CT50	1-1/4"	2.00"*	2.55"	2.75"	3/4-16	522-186
CT50	1-1/4"	4.00"	2.55"	2.48"	3/4-16	522-188
CT50	1-1/4"	6.00"	2.55"	2.48"	3/4-16	522-190
CT50	1-1/4"	8.00"	2.55"	2.48"	3/4-16	522-192
CT50	1-1/4"	14.00"	2.55"	2.48"	3/4-16	522-194
CT50	1-1/2"	2.25"*	2.83"	2.75"	3/4-16	522-196
CT50	1-1/2"	4.50"	2.83"	2.99"	3/4-16	522-198
CT50	1-1/2"	7.00"	2.83"	2.99"	3/4-16	522-200
CT50	1-1/2"	9.00"	2.83"	2.99"	3/4-16	522-202
CT50	2"	3.63"*	3.34"	3.74"	1"-14	522-204
CT50	2"	5.37"	3.34"	3.74"	1"-14	522-206
CT50	2"	8.00"	3.34"	3.74"	1"-14	522-208
CT50	2"	10.00"	3.34"	3.74"	1"-14	522-210
CT50	2-1/2"	6.00"	3.66"	4.25"	1"-14	522-212

BT30 DIRECT COOLANT End Mill Holders

New

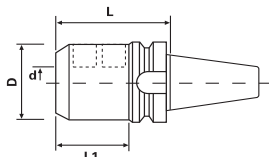
NOW 3 COOLANT OPTIONS ALL IN ONE!

- Coolant thru the spindle
- DIN Coolant thru flange option
- Coolant thru the body
- All Ground Body
- 100% Forged Construction



BT 30
Premium
Balanced
20x
RPM

Complete with certificate



Taper	Hole Dia. (d)	Gauge Length (L)	L1	D	Set Screw	Code No.
BT30	1/8"	2.36"	0.63"	0.75"	8-32	522-214
BT30	3/16"	2.36"	0.87"	0.75"	10-32	522-216
BT30	1/4"	2.36"	1.10"	0.79"	1/4-28	522-218
BT30	5/16"	2.36"	1.26"	0.87"	5/16-24	522-220
BT30	3/8"	2.36"	1.26"	1.00"	3/8-24	522-222
BT30	1/2"	2.36"	1.50"	1.38"	7/16-20	522-224
BT30	5/8"	2.50"	1.61"	1.65"	9/16-18	522-226
BT30	3/4"	3.00"	1.77"	1.88"	5/8-18	522-228
BT30	1"	3.54"	2.36"	2.36"	3/4-16	522-230

BT40 DIRECT COOLANT End Mill Holders

New

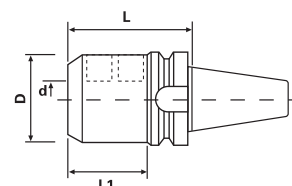
NOW 3 COOLANT OPTIONS ALL IN ONE!

- Coolant thru the spindle
- DIN Coolant thru flange option
- Coolant thru the body
- All Ground Body
- 100% Forged Construction



BT 40
Premium
Balanced
30x
RPM

Complete with certificate



Taper	Hole Dia. (d)	Gauge Length (L)	L1	D	Set Screw	Code No.
BT40	1/8"	1.38"	0.63"	0.75"	8-32	522-232
BT40	1/8"	2.50"	0.63"	0.75"	8-32	522-234
BT40	1/8"	4.00"	0.63"	0.75"	8-32	522-236
BT40	3/16"	2.50"	0.86"	0.75"	10-32	522-238
BT40	3/16"	4.00"	0.86"	0.75"	10-32	522-240
BT40	1/4"	1.38"	1.18"	0.79"	1/4-28	522-242
BT40	1/4"	2.50"	1.10"	0.79"	1/4-28	522-244
BT40	1/4"	4.00"	1.10"	0.79"	1/4-28	522-246
BT40	5/16"	1.38"	1.38"	0.87"	5/16-24	522-248
BT40	5/16"	2.50"	1.26"	0.87"	5/16-24	522-250
BT40	5/16"	4.00"	1.26"	0.87"	5/16-24	522-252
BT40	3/8"	1.38"	1.38"	1.00"	3/8-24	522-254
BT40	3/8"	2.50"	1.26"	1.00"	3/8-24	522-256
BT40	3/8"	4.00"	1.26"	1.00"	3/8-24	522-258
BT40	7/16"	2.50"	1.53"	1.38"	7/16-20	522-260
BT40	1/2"	1.75"	1.57"	1.38"	7/16-20	522-262
BT40	1/2"	2.50"	1.50"	1.38"	7/16-20	522-264
BT40	1/2"	4.00"	1.57"	1.38"	7/16-20	522-266
BT40	5/8"	1.75"	1.61"	1.65"	9/16-18	522-268
BT40	5/8"	2.50"	1.61"	1.65"	9/16-18	522-270
BT40	5/8"	4.00"	1.61"	1.65"	9/16-18	522-272
BT40	3/4"	1.75"	1.77"	1.89"	5/8-18	522-274
BT40	3/4"	2.50"	1.77"	1.89"	5/8-18	522-276
BT40	3/4"	4.00"	1.77"	1.89"	5/8-18	522-278
BT40	7/8"	3.38"	2.08"	2.00"	5/8-18	522-280
BT40	1"	2.00"	2.28"	2.25"	3/4-16	522-282
BT40	1"	3.56"	2.36"	2.36"	3/4-16	522-284
BT40	1"	6.00"	2.36"	2.36"	3/4-16	522-286
BT40	1-1/4"	2.00"	2.16"	2.25"	3/4-16	522-288
BT40	1-1/4"	3.56"	2.56"	2.48"	3/4-16	522-290
BT40	1-1/4"	6.00"	2.56"	2.48"	3/4-16	522-292
BT40	1-1/2"	4.50"	2.83"	2.99"	3/4-16	522-294
BT40	1-1/2"	6.00"	2.83"	2.99"	3/4-16	522-296

BT50 DIRECT COOLANT End Mill Holders

New

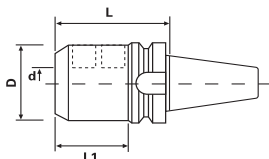
NOW 3 COOLANT OPTIONS ALL IN ONE!

- Coolant thru the spindle
- DIN Coolant thru flange option
- Coolant thru the body
- All Ground Body
- 100% Forged Construction



BT 50
Premium
Balanced
25x
RPM

Complete with certificate



Taper	Hole Dia. (d)	Gauge Length (L)	L1	D	Set Screw	Code No.
BT50	3/8"	2.50"	1.26"	1.00"	3/8-24	522-300
BT50	3/8"	5.31"	3.82"	1.00"	3/8-24	522-302
BT50	1/2"	2.75"	1.50"	1.38"	7/16-20	522-304
BT50	1/2"	5.31"	3.82"	1.38"	7/16-20	522-306
BT50	5/8"	3.00"	1.61"	1.65"	9/16-18	522-308
BT50	5/8"	5.31"	3.82"	1.65"	9/16-18	522-310
BT50	3/4"	3.00"	1.46"	1.75"	5/8-18	522-312
BT50	3/4"	6.00"	1.77"	1.75"	5/8-18	522-314
BT50	1"	4.00"	2.64"	2.36"	3/4-16	522-316
BT50	1"	6.00"	4.41"	2.36"	3/4-16	522-318
BT50	1-1/4"	4.00"	2.64"	2.48"	3/4-16	522-320
BT50	1-1/4"	6.00"	2.55"	2.48"	3/4-16	522-322
BT50	1-1/2"	4.50"	2.83"	2.99"	3/4-16	522-324
BT50	1-1/2"	7.00"	2.83"	2.99"	3/4-16	522-326
BT50	2"	4.72"	3.23"	3.86"	1"-14	522-328

HSK63A DIRECT COOLANT End Mill Holders

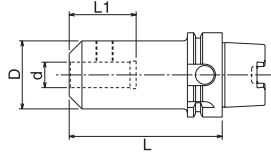
New

NOW 3 COOLANT OPTIONS ALL IN ONE!

- Coolant thru the spindle
- DIN Coolant thru flange option
- Coolant thru the body
- All Ground Body
- 100% Forged Construction



Complete with certificate



HSK 63
Premium
Balanced
30x
RPM

Taper	Hole Dia. (d)	Gauge Length (L)	L1	D	Set Screw	Code No.
HSK63A	3/16"	5.00"	0.866"	0.748"	10-32X1/4	522-330
HSK63A	1/4"	3.00"	1.102"	0.787"	1/4-28X1/4	522-332
HSK63A	1/4"	5.00"	1.102"	0.787"	1/4-28X1/4	522-334
HSK63A	5/16"	3.00"	1.417"	0.874"	5/16-24X1/4	522-336
HSK63A	5/16"	5.00"	1.417"	0.874"	5/16-24X1/4	522-338
HSK63A	3/8"	3.50"	1.574"	1.00"	3/8-24X5/16	522-340
HSK63A	3/8"	5.00"	1.574"	1.00"	3/8-24X5/16	522-342
HSK63A	1/2"	4.00"	1.771"	1.378"	7/16-20X3/8	522-344
HSK63A	1/2"	5.00"	1.771"	1.378"	7/16-20X3/8	522-346
HSK63A	5/8"	4.00"	1.889"	1.654"	9/16-18X1/2	522-348
HSK63A	3/4"	4.50"	1.968"	1.889"	5/8-18X1/2	522-350
HSK63A	3/4"	6.00"	1.968"	1.889"	5/8-18X1/2	522-352
HSK63A	1"	4.50"	2.755"	2.363"	3/4-16X11/16 (2)	522-354
HSK63A	1"	6.00"	2.755"	2.363"	3/4-16X11/16 (2)	522-356
HSK63A	1-1/4"	4.50"	2.952"	2.88"	3/4-16X11/16 (2)	522-358
HSK63A	1-1/4"	6.00"	2.952"	2.88"	3/4-16X11/16 (2)	522-360

HSK100A DIRECT COOLANT End Mill Holders

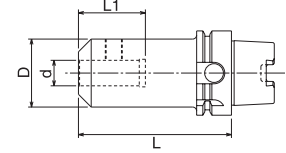
New

NOW 3 COOLANT OPTIONS ALL IN ONE!

- Coolant thru the spindle
- DIN Coolant thru flange option
- Coolant thru the body
- All Ground Body
- 100% Forged Construction



Complete with certificate



HSK 100
Premium
Balanced
25x
RPM

Taper	Hole Dia. (d)	Gauge Length (L)	L1	D	Set Screw	Code No.
HSK100A	1/4"	4.00"	1.102"	0.787"	1/4-28X1/4	522-362
HSK100A	1/4"	6.00"	1.102"	0.787"	1/4-28X1/4	522-364
HSK100A	3/8"	4.00"	1.260"	1.00"	3/8-24X5/16	522-366
HSK100A	1/2"	4.00"	1.575"	1.378"	7/16-20X3/8	522-368
HSK100A	1/2"	6.00"	1.575"	1.378"	7/16-20X3/8	522-370
HSK100A	5/8"	4.00"	1.693"	1.654"	9/16-18X1/2	522-372
HSK100A	5/8"	6.00"	1.693"	1.654"	9/16-18X1/2	522-374
HSK100A	3/4"	4.00"	1.969"	1.890"	5/8-18X1/2	522-376
HSK100A	3/4"	6.00"	1.969"	1.890"	5/8-18X1/2	522-378
HSK100A	1"	4.00"	2.559"	2.362"	3/4-16X11/16 (2)	522-380
HSK100A	1"	6.00"	2.559"	2.362"	3/4-16X11/16 (2)	522-382
HSK100A	1-1/4"	4.00"	2.559"	2.480"	3/4-16X11/16 (2)	522-384
HSK100A	1-1/4"	6.00"	2.559"	2.480"	3/4-16X11/16 (2)	522-386