

TOOLS OF THE TRADE

DECEMBER 2023

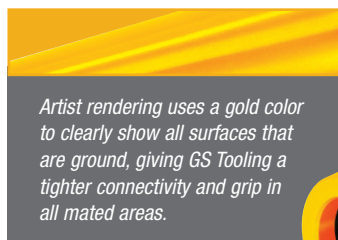


THE DIFFERENCE IS IN THE DETAILS

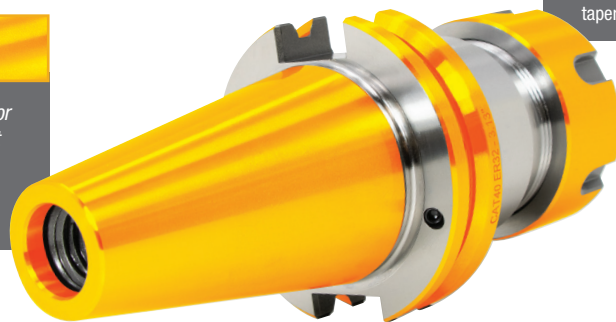
All at equal quality, better pricing,
& in stock in USA

Sowa Tool's premium brand, GS Tooling, delivers top-tier quality and performance that rivals or exceeds the best in the world. These products offer exceptional features and dependability, at shockingly affordable prices, making them an ideal choice for applications where accuracy and speed matter most.

There is a reason we say GS stands for "Gold Standard"!

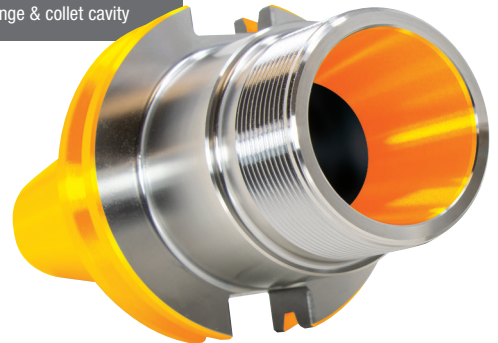


Artist rendering uses a gold color to clearly show all surfaces that are ground, giving GS Tooling a tighter connectivity and grip in all mated areas.



WHAT'S GROUND?

Ground retention knob seat,
taper, v-flange & collet cavity



Only the strongest material is used

GS Tooling holders, retention knobs and nuts are all made from **16NiCr4** Premium European Alloy Steel, with a hardness of **58-62 HRC**. This is greater than the industry standard of 48-52 HRC which can distort with use. Our taper accuracy is AT2 or better, for the life of the tool – guaranteed.

Our collets are made from alloy steel with no burrs to damage your tool or decrease accuracy.

All components are ground to perfection

For an extra level of precision, we start with prebalanced holders and components and invest the time to grind all surfaces that will be in contact with the machine to a fine finish, giving our holder a **runout accuracy of 0.0001"** and **taper and collet cavity have an accuracy of AT2 or better** (Compare this with the runout accuracy of 0.0002" and taper accuracy AT3 of other brands). This offers a tighter connectivity and grip in all mated areas vs turned holders, increasing tolerances throughout.



COMPLETE
METALWORKING
SOLUTIONS

(800) 991-4225

www.ahbinc.com

ISO Certified

customerservice@ahbinc.com

Explore our full rotary tooling line at a glance

Sowa Tool offers a large SKU offering of a wide range of rotary tooling: end mill holders, shell mill/face mill holders, shrink fit holders, tap holders, driven tooling and angle heads.



Details	ER Collet Chucks									
Image										
Holder	CAT ER Collet Chuck	CAT ER Collet Chuck	Dual Contact CAT ER Collet Chuck	HSK ER Collet Chuck	ER Collet Chuck Extension	BT ER Collet Chuck	R8 Taper ER Collet Chuck	R8 Taper ER Collet Chuck	NMTB ER Collet Chuck	NMTB ER Collet Chuck
Brand										
Taper	CAT40, 50	CAT40, 50	CAT40, 50	HSK63A, 100A	Extension	BT30, 40, 50	R8	R8	NMTB30	NMTB40, 50
Taper Accuracy	AT3 or better	AT2 or better	According to Dual Contact Tolerance	According to DIN69893	h6	AT2 or better	According to R8 Tolerance	According to R8 Tolerance	AT3 or better	AT2 or better
Coolant Features	AD/B DIN Standard	AD/B DIN Standard	AD/B DIN Standard	Coolant Through	Coolant Through	AD/B JIS Standard	Coolant Through	Coolant Through	Coolant Through	Coolant Through
Material Grade	42CrMo	16NiCr4 Premium European Alloy Steel	16NiCr4 Premium European Alloy Steel	16NiCr4 Premium European Alloy Steel	16NiCr4 Premium European Alloy Steel	16NiCr4 Premium European Alloy Steel	SCM415 Steel	16NiCr4 Premium European Alloy Steel	SCM415 Steel	16NiCr4 Premium European Alloy Steel
Factory Balanced (Certificate Included)	CAT40: G2.5/20,000rpm CAT50: G2.5/15,000rpm	CAT40: G2.5/30,000rpm CAT50: G2.5/25,000rpm	CAT40: G2.5/30,000rpm CAT50: G2.5/25,000rpm	HSK63A: G2.5/30,000rpm HSK100A: G2.5/25,000rpm	Factory Balanced	BT30 & BT40: 2.5/30,000rpm BT50: G2.5/25,000rpm	Factory Balanced	Factory Balanced	Factory Balanced	Factory Balanced
Runout Accuracy	0.0002"	0.0001"	0.0001"	0.0001"	0.0001"	0.0001"	0.0002"	0.0001"	0.0002"	0.0001"
Thread Tolerance	6h	4h	4h	4h	4h	4h	6h	4h	6h	4h
RFID Chip Hole	Yes	Yes	Yes	Yes	No	Yes	No	No	No	No



Shrink Fit Holders

Choose Shrink Fit Holders when maximum gripping power with exceptional concentricity is needed. The tool is gripped 360° along the entire length of bore resulting in an evenly distributed clamping force, allowing for greater speeds and feeds, better finishes, extended tool life and increased productivity.





Solid Carbide End Mills

Compare GS Tooling End Mills with other brands... the biggest difference you'll find is unrivaled value for your money!





Sowa Tool & Machine Co. Ltd.

We reserve the right to make pricing changes or impose purchase restrictions at any time, and accept no liabilities for mistakes and printing errors. All taxes extra.