

Compact, light-weight pneumatically-operated drilling units

SELFEEDER ELECTRIC

SSE2

Most compact and lightweight unit.
Ideal for small-diameter drilling.
The ES2 type has been updated
by replacing the induction motor with a PM motor.



Energy Saving

Global Support

Variable Rotation

Steel
φ 2.5

Aluminum
φ 5

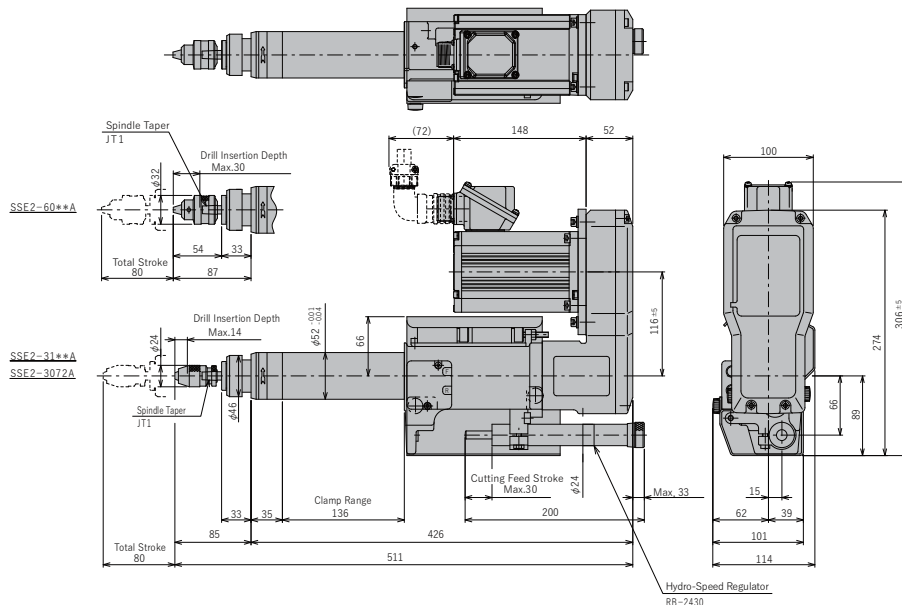
Specifications

Supply air pressure at 0.5 MPa

| Spec. | No-load rotation speed 50~120 Hz | Spindle Torque | Rated torque range | Chucking capacity | Drilling Capacity Per Number of Spindles | | | | | | Stroke | | Motor Specifications | | | Thrust | Air Consumption | Weight |
|------------|-------------------------------------|----------------|--------------------|-----------------------|--|-----|-----|------|-----|-----|--------------|---------------------|----------------------|------------------------|---------------|--------|-----------------|--------|
| | | | | | 1-SP | | | 2-SP | | | Total stroke | Cutting feed stroke | Rated Power | Rated Rotational Speed | Rated Current | | | |
| | | | | | AL* | FC* | ST* | AL* | FC* | ST* | | | | | | | | |
| Model | min ⁻¹ | N·m | min ⁻¹ | mm | AL* | FC* | ST* | AL* | FC* | ST* | mm | mm | kW | min ⁻¹ | A | N | L/Stroke | kg |
| SSE2-3120A | 4,980~12,000 | 0.19 | 4,980~9,960 | 3 Keyless Chuck | 2.5 | 1 | 1 | - | - | - | 80 | 0-30 | 0.2 | 3000 (100Hz) | 1.1 | 490 | 2 | 14 |
| SSE2-3100A | 4,290~10,300 | 0.22 | 4,290~8,570 | | 3 | 1 | 1 | - | - | - | | | | | | | | |
| SSE2-3072A | 3,000~7,200 | 0.32 | 3,000~6,000 | | 3.5 | 1.5 | 1.5 | - | - | - | | | | | | | | |
| SSE2-6054A | 2,270~5,440 | 0.42 | 2,270~4,530 | 6.5 | 4 | 2 | 2 | 3 | 1.5 | 1.5 | | | | | | | | |
| SSE2-6036A | 1,500~3,600 | 0.64 | 1,500~3,000 | | 5 | 3 | 2.5 | 4 | 2.5 | 2 | | | | | | | | |

- Notes:
1. Model selection should be based on the shape of the work, material, cutting characteristics, diameter and material of tools, rotational speed (cutting speed), etc.
 2. The drilling capacity displayed in the above table is based on values representing a drilling depth of twice the diameter of the drill.
 3. The RB-2430 comes standard with a Hydro Speed Regulator. A Hydro Speed Regulator is available as an option upon request.
(Optional Hydro Speed Regulator models are: RB-2460, R-2442A, R-2462A, and R-2482A)
 4. Make sure to use a collet chuck or spindle nose when the hardness of carbide drills and tool shanks is higher than that of general HSS (high-speed steel) drills.
 5. Valveless specification is standard. If you require valve block specification (former standard specification), please order valve block ass'y separately. (Replacement to be made by customer)
 6. AL* : Aluminium(ADC12) FC* : Cast iron(FC200) ST* : Steel(S45C)

Dimensions (mm)



About Pneumatic Control Circuit

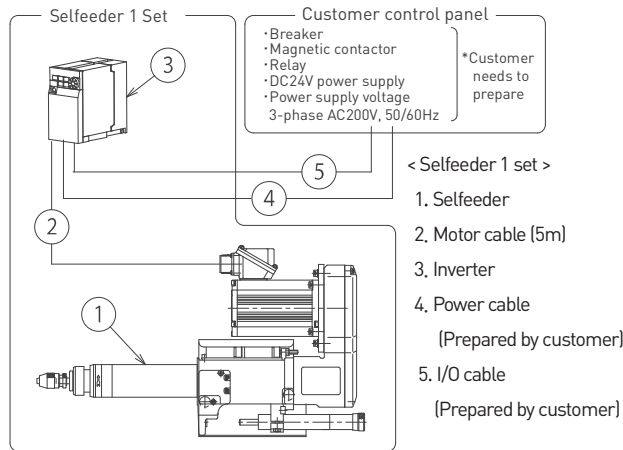
Please refer to the following QR code for the pneumatic control circuit to control the forward/reverse movement and speed of the Selffeeder.

Notes

1. Supply clean air of 0.5 to 0.6 MPa to the Selffeeder.
2. Air equipment up to the air supply port should be prepared by the customer.
3. Use a meter-in flow control valve.
4. When using the unit at an angle downward or vertical downward, install a pneumatic control circuit specialized to prevent them from falling.

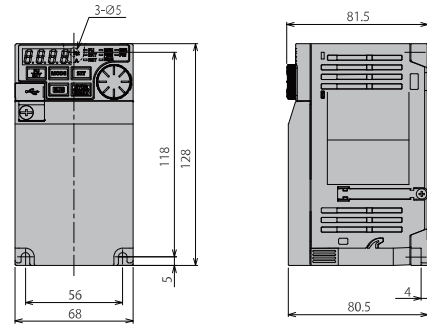
For more info

Configuration diagram



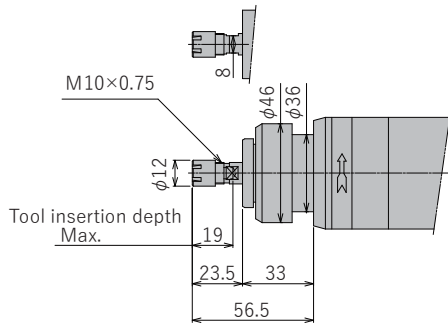
Inverter

FR-E820-0.2K



Tip shape

- Collet chuck / spindle nose (option)
Model No.: ER8 or equivalent (chucking range $\phi 0.5$ to $\phi 5$)



- Note 1: Detailed dimensions of spindle tip are as recommended for REGO-FIX ER collets.
2: Collet, collet nut, and wrench are not included. Please order separately.

I/O Signal Specifications

| I/O | Signal | Name |
|--------|-----------|--|
| Input | STF | Unused |
| | STR | Spindle ON |
| | RH | Multi-step spd (1 to 15 spd) Freq set range 50 to 120Hz Can be set in 5Hz increments |
| | RM | |
| | RL | |
| | MRS (REX) | |
| RES | Reset | |
| Output | A | Abnormal Output(Relay) Normally-open contact |
| | B | Abnormal Output(Relay) Normally-closed contact |
| | RUN | In operation |
| | FU | Freq detection |

Options

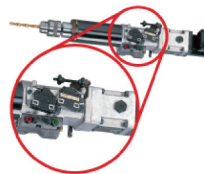
■ Hydro-speed regulator

A hydraulic feed speed control unit that can adjust the feed rate of an air cylinder to any desired speed. For details, please refer to our web page.



■ Operate Signal Kit

This kit is designed to accurately detect the operation of a Selffeeder and control synchronized operation with other devices. For details, please refer to our web page.



■ Multi-spindle head

Various multi-spindle heads are available. For details, please refer to our web page.



For more information about our products, please visit our website. ▶▶



COMPLETE
METALWORKING
SOLUTIONS

(800) 991-4225

www.ahbinc.com

ISO Certified

customerservice@ahbinc.com

■ Specifications in this catalog are subject to change without prior notice for further improvement.

■ When exporting this product overseas, please follow the export control procedures based on Japan's Foreign Exchange and Foreign Trade Law.

■ SUGINO, SUGINO and SELFEEDER are trademarks or service marks of Sugino Machine Limited in Japan or foreign countries.

■ The content of this catalog is as of January 2024.

■ Any unauthorized use, copying or reprinting of the contents or part thereof in this catalog is prohibited.