

Compact, light-weight pneumatically-operated drilling units

SELFEEDER ELECTRIC

SSE5

Includes a higher thrust range than SSE4.

Multi-spindle head can also be supported up to 6 spindles.

The ES5 type has been updated by replacing the induction motor with a PM motor.



Energy Saving

Global Support

Variable Rotation

Steel
 ϕ 13

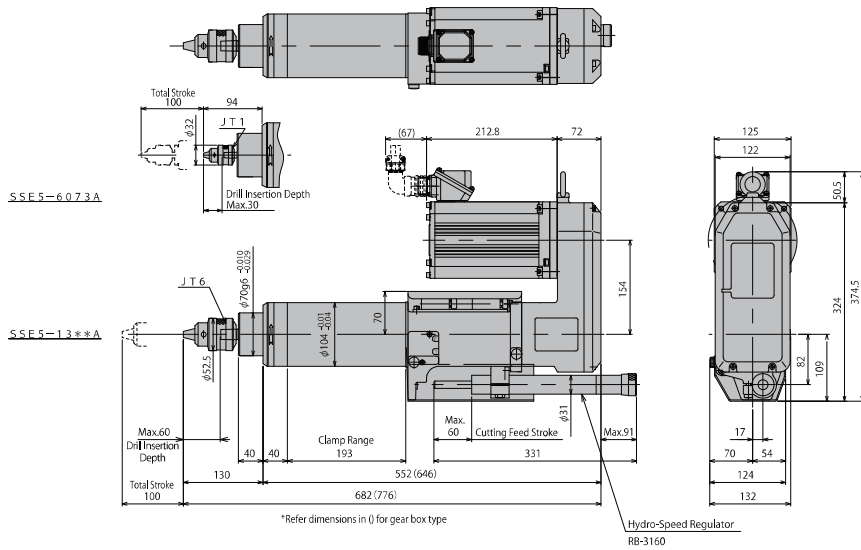
Aluminum
 ϕ 19

Specifications

Spec.	No-load rotation speed 75-180 Hz	Spindle Torque	Rated torque range	Chucking capacity	Drilling Capacity Per Number of Spindles																								Stroke		Motor Specifications				Thrust	Air Consumption	Weight											
					1-SP						2-SP						3-SP						4-SP						5-SP									6-SP						Total stroke	Cutting feed stroke	Rated Power	Rated Rotational Speed	Rated Current
					AL*	FC*	ST*	AL*	FC*	ST*	AL*	FC*	ST*	AL*	FC*	ST*	AL*	FC*	ST*	AL*	FC*	ST*	AL*	FC*	ST*	AL*	FC*	ST*	mm	mm	kW	min ⁻¹	A	N				L/Stroke	kg									
Model	min ⁻¹	N·m	min ⁻¹	mm																									mm	mm	kW	min ⁻¹	A	N	L/Stroke	kg												
SSE5-6073A	3,050 -7,300	2.35	3,050 -6,100	6.5	5.5	2	2	5	2	2	4	2	2	-	-	-	-	-	-	-	-	-	-	-	-	100	0-60	1.5	3000 (150Hz)	6.1	2000	7-12	36															
SSE5-1336A	1,500 -3,600	4.78	1,500 -3,000	13	11	5	4.5	8	5	4.5	7	4	4	6.5	4	4	6	3.5	3.5	5.5	3.5	3.5				100	0-60	1.5	3000 (150Hz)	6.1	2000	7-12	36															
SSE5-1324A	990 -2,380	7.23	990 -1,980		13	10	9	10	7	6	8	6	5.5	6.5	5	4	6.5	4	3.5	5.5	3.5	3.5																										
SSE5-1310A (with gearbox)	430 -1030	16.75	430 -860		17	14	12.5	12	9	7	10	7	6	8	6	5	7	6	5	7	5	4																										
SSE5-1305A (with gearbox)	210 -510	34.03	210 -420		19	16	13	13	9	7.5	10	7	6.5	8	6	5	7	6	5	7	5	4																										

- Notes:
- Model selection should be based on the shape of the work, material, cutting characteristics, diameter and material of tools, rotational speed (cutting speed), etc.
 - The drilling capacity displayed in the above table is based on values representing a drilling depth of twice the diameter of the drill.
 - The RB-3160 comes standard with a Hydro Speed Regulator. A Hydro Speed Regulator is available as an option upon request.
(Optional Hydro Speed Regulator models are: RB-3140, R-3182A, and R31132A)
 - Make sure to use a collet chuck or spindle nose when the hardness of carbide drills and tool shanks is higher than that of general HSS (high-speed steel) drills.
 - Valveless specification is standard. If you require valve block specification (former standard specification), please order valve block ass'y separately. (Replacement to be made by customer)
 - AL* : Aluminium(ADC12) FC* : Cast iron(FC200) ST* : Steel(S45C)

Dimensions (mm)



About Pneumatic Control Circuit

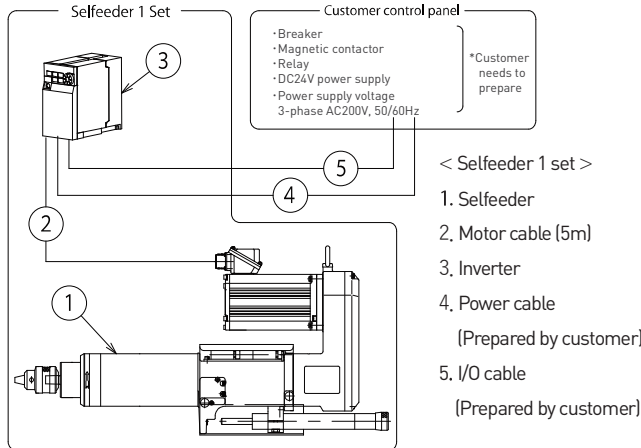
Please refer to the following QR code for the pneumatic control circuit to control the forward/reverse movement and speed of the Selffeeder.

Notes

- Supply clean air of 0.5 to 0.6 MPa to the Selffeeder.
- Air equipment up to the air supply port should be prepared by the customer.
- Use a meter-in flow control valve.
- When using the unit at an angle downward or vertical downward, install a pneumatic control circuit specialized to prevent the ram from falling.

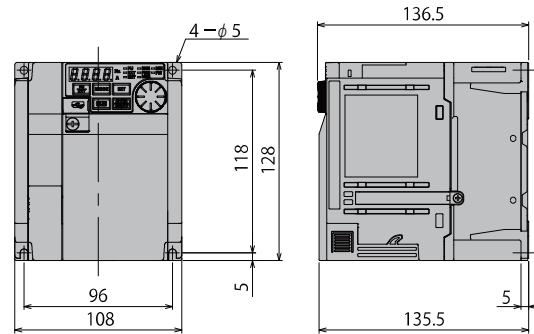
For more info

Configuration diagram



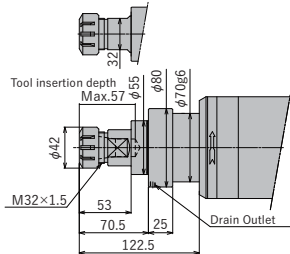
Inverter

FR-E820-1.5K



Tip shape

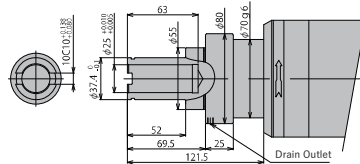
- Collet chuck / spindle nose (option)
Model No.: ER25 or equivalent
(chucking range φ1 to φ16)



Note:

1. Detailed dimensions of spindle tip are as recommended for REGO-FIX ER collets.
2. Collet, collet nut, and wrench are not included. Please order separately.
3. When installing the Selffeeder <Electric> horizontally, the drain outlet must face downwards.

- Adjustable Spindle Nose (option)
Model No.: KH-25E



Note:

1. Detailed dimensions of spindle nose are as recommended by NT Tool Co.
2. KH-E type spindle nose is applicable to NT Tool's quick-change stub holders KH-A / KH-E type.
3. Adjustable spindle nose is not applicable for Selffeeder <Electric> with no-load rotation speed exceeding 5,000min⁻¹.
4. When installing the Selffeeder <Electric> horizontally, the drain outlet must face downwards.

I/O Signal Specifications

I/O	Signal	Name
Input	STF	Unused
	STR	Spindle ON
	RH	Multi-step spd (1 to 15 spd) Freq set range 75 to 180Hz Can be set in 7.5Hz increments
	RM	
	RL	
	MRS (REX)	
RES	Reset	
Output	A	Abnormal Output(Relay) Normally-open contact
	B	Abnormal Output(Relay) Normally-closed contact
	RUN	In operation
	FU	Freq detection

Options

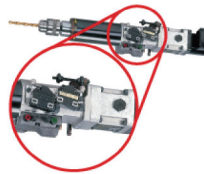
Hydro-speed regulator

A hydraulic feed speed control unit that can adjust the feed rate of an air cylinder to any desired speed. For details, please refer to our web page.



Operate Signal Kit

This kit is designed to accurately detect the operation of a Selffeeder and control synchronized operation with other devices. For details, please refer to our web page.



Multi-spindle head

Various multi-spindle heads are available. For details, please refer to our web page.



For more information about our products, please visit our website. ▶▶



AHB
TOOLING & MACHINERY

COMPLETE
METALWORKING
SOLUTIONS

(800) 991-4225

www.ahbinc.com

ISO Certified

customerservice@ahbinc.com

- Specifications in this catalog are subject to change without prior notice for further improvement.
- When exporting this product overseas, please follow the export control procedures based on Japan's Foreign Exchange and Foreign Trade Law.
- SUGINO, sugino, and SELFFEEDER are trademarks or service marks of Sugino Machine Limited in Japan or foreign countries.
- The content of this catalog is as of January 2024.
- Any unauthorized use, copying or reprinting of the contents or part thereof in this catalog is prohibited.