



COMPLETE  
METALWORKING  
SOLUTIONS

(800) 991-4225

[www.ahbinc.com](http://www.ahbinc.com)

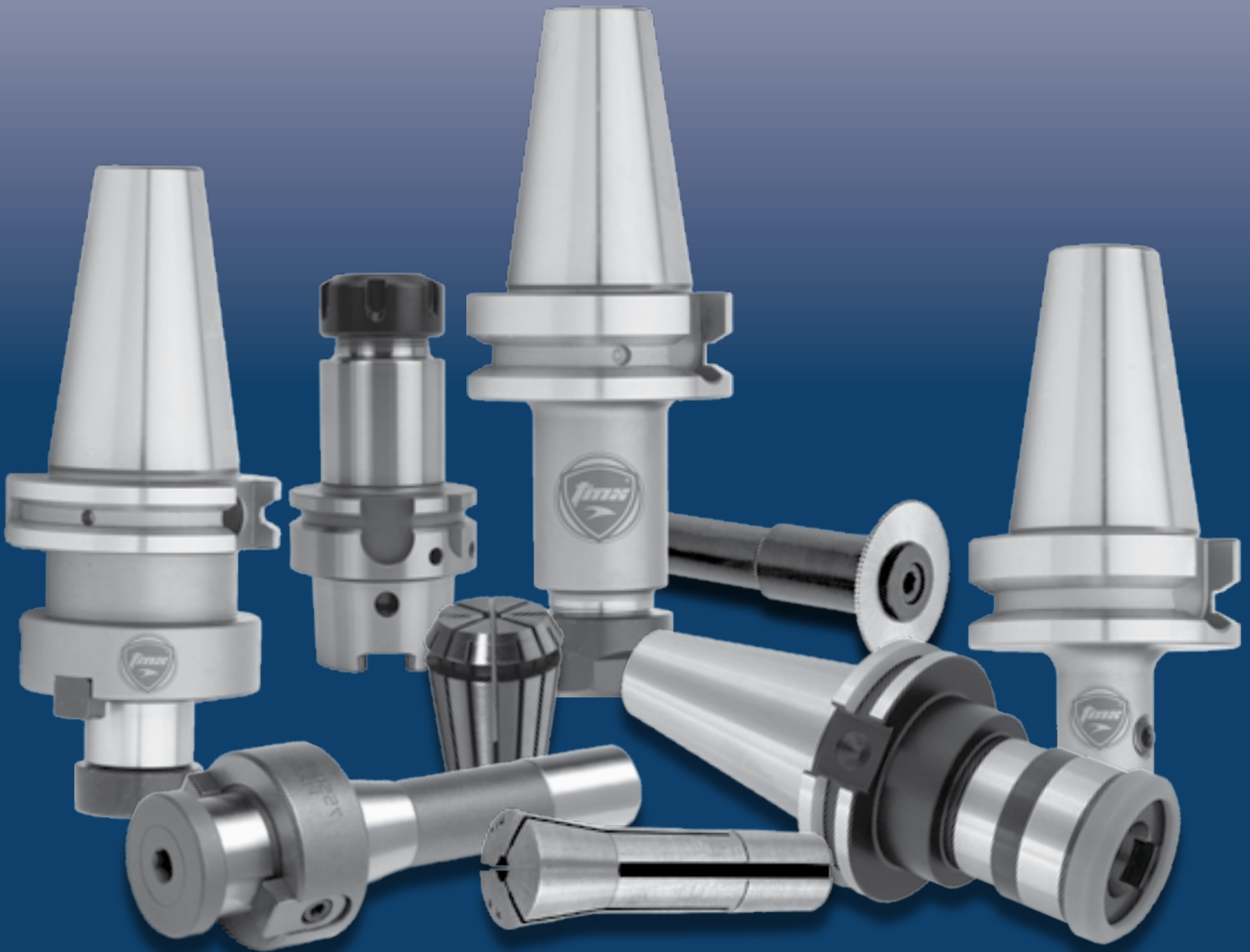
ISO Certified

[customerservice@ahbinc.com](mailto:customerservice@ahbinc.com)



## *Tooling Systems*

# ***Rotary Tool Holders***



[www.tmxtools.com](http://www.tmxtools.com)

# Guide to Interactive PDF

This PDF catalog offers new interactive features to make viewing and navigating simple and easy.



**Tooling Systems**

On the quick lookup, table of contents [A], index and item quick find pages [B], click on any page number to go directly to that page.

[B] Item Quick Find

	CAT	BT
Adapter: Jacobs Taper	15	28
Adapter: Morse Taper	15	-

[A] Table of Contents

## MT SHANK TOOLING (CONT.)

Shell Reamer Arbors.....	52
Taper Sleeves .....	53
Annular Cutter Holders .....	54
Morse Taper to Threaded Mount.....	54
Precision Drill Chuck Arbors (MT to JT Adapters) .....	55

On the contents page for each section [C], click on any of the images or entries to go to the corresponding item page.

[C] Section Contents

### CONTENTS



- 22 ER Collet Chucks
- 23 TG Collet Chucks
- 24 Precision Ball Bearing Keyless Drill Chucks
- 25 End Mill Holders
- 27 Shell Mill/Face Mill Arbor Holders

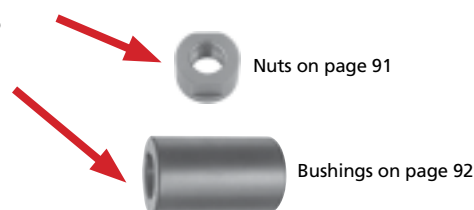
Some pages show related or accessory items [D]. Click on the images of these items to be directed to that item page.

### Style B Milling Machine Arbors

- Draw Bar Threads:
  - #30 1/2" - 13
  - #40 5/8" - 11
  - #50 1" - 8



[D] Related/Accessory Items



# Quick Lookup



**Tooling Systems**

<b>TABLE OF CONTENTS</b>	<b>1</b>
<b>CAT V-FLANGE TOOLING</b>	<b>3</b>
<b>BT FLANGE TOOLING</b>	<b>21</b>
<b>NST/NMTB FLANGE TOOLING</b>	<b>31</b>
<b>HSK FLANGE TOOLING</b>	<b>41</b>
<b>R8 SHANK TOOLING</b>	<b>43</b>
<b>MT SHANK TOOLING</b>	<b>49</b>
<b>STRAIGHT SHANK TOOLING</b>	<b>57</b>
<b>DRILL CHUCKS</b>	<b>65</b>
<b>COLLETS</b>	<b>67</b>
<b>TAP ADAPTERS</b>	<b>81</b>
<b>RETENTION KNOBS</b>	<b>85</b>
<b>ACCESSORIES &amp; SPECIALS</b>	<b>89</b>
<b>INDEX</b>	<b>95</b>

# Table of Contents



Tooling Systems

TABLE OF CONTENTS

## CAT V-FLANGE TOOLING

ER Collet Chucks .....	4
Double Angle Collet Chucks .....	6
TG Collet Chucks.....	7
End Mill Holders CAT 40.....	8
End Mill Holders CAT 50.....	10
Shell Mill/Face Mill Arbor Holders .....	12
Face Mill Holders CAT 50.....	14
Precision Ball Bearing Keyless Drill Chucks.....	14
Jacobs Taper Holders.....	15
Morse Taper Adapters.....	15
CAT 50 to CAT 40 Adapters.....	16
Stub Milling Arbors .....	16
Semi Flush Slitting Saw Holders .....	17
Rigid Tap Holders .....	18
Tension/Compression Tap Holders.....	19

## BT FLANGE TOOLING

ER Collet Chucks .....	22
TG Collet Chucks.....	23
Precision Ball Bearing Keyless Drill Chucks.....	24
End Mill Holders .....	25
Shell Mill/Face Mill Arbor Holders .....	27
Jacobs Taper Holders.....	28
Rigid Tap Holders .....	29
Tension/Compression Tap Holders.....	29

## NST/NMTB FLANGE TOOLING

ER Collet Chucks .....	32
TG Collet Chucks.....	32
DA180 Collet Chucks .....	33
End Mill Holders .....	34

Shell Mill Holders .....	35
Shell Mill Holders with 4" Extension.....	35
Face Mill Holders .....	36
Integral Drill Chucks.....	36
Jacobs Taper Adapters .....	36
Morse Taper Adapters.....	37
R8 Adapters .....	37
Reducer NMTB 50 to 40 .....	37
Style A Milling Machine Arbors .....	38
Style B Milling Machine Arbors .....	39

## HSK FLANGE TOOLING

HSK 63A ER Collet Chucks.....	42
HSK 63A End Mill Holders .....	42

## R8 SHANK TOOLING

ER Collet Chucks .....	44
TG Collet Chucks.....	44
DA180 Collet Chucks .....	45
End Mill Holders .....	45
Shell Mill Arbors .....	46
Jacobs Taper Adapters .....	46
R8 Shank to MT Socket Adapters .....	46
Stub Milling Arbors .....	47
Precision Slitting Arbor .....	47
Annular Cutter Holders .....	47

## MT SHANK TOOLING

ER Collet Chucks .....	50
Shell Mill Holders with Tanged Arbors.....	50
End Mill Holders .....	51
Face Mill Holders .....	52

The information contained herein is subject to change without notice. We do our best to maintain in stock full and complete inventories of all regular lines. Close-out items may be depleted and will be replaced with comparable merchandise subject to prior sales. Photos and drawings shown are a general representation; occasionally we may change the exterior packaging of some products. Toolmex Industrial Solutions shall not be liable for technical or editorial errors or omissions contained herein.



# Table of Contents

Tooling Systems

TABLE OF CONTENTS

## MT SHANK TOOLING (CONT.)

Shell Reamer Arbors.....	52
Taper Sleeves.....	53
Annular Cutter Holders.....	54
Morse Taper to Threaded Mount.....	54
Precision Drill Chuck Arbors (MT to JT Adapters).....	55

## STRAIGHT SHANK TOOLING

ER Collet Chucks.....	58
Shell Mill Arbors.....	59
Shell Reamer Arbors.....	59
Jacobs Taper Adapters.....	60
Rigid Tapping Chucks.....	60
Tension and Compression Tapping Chucks.....	61
Slitting or Slotting Saw Arbors.....	61
Floating Reamer Holders.....	61
Slitting and Slotting Saw Arbors.....	62
Stub Milling Arbors.....	63
Annular Cutter Holders.....	63

## DRILL CHUCKS

Heavy Duty Keyless Drill Chucks.....	66
--------------------------------------	----

## COLLETS

CAT ER Collet Chuck Sets.....	68
NMTB ER Collet Chucks Sets.....	68
R8 Shank ER Collet Chuck Sets.....	69
Morse Taper ER Collet Chuck Set.....	69
Straight Shank ER Collet Chuck Sets.....	69
ER Spring Collets & Collet Sets in Fractional & Metric Sizes.....	70
ER Rubber Sealed Collets.....	72

ER Jetstream Sealed Collets.....	73
TG Precision Single Angle Collets.....	74
DA100, DA180, DA200, & DA300 Collets & Sets.....	76
5C Precision Round Collets & Sets.....	77
R8 Precision Round Collets & Sets.....	78
16C Precision Round Collets.....	79

## TAP ADAPTERS

Quick Change Positive Drive Tap Adapters.....	82
Quick Change Torque Control Tap Adapters.....	83

## RETENTION KNOBS

Retention Knobs.....	86
----------------------	----

## ACCESSORIES & SPECIALS

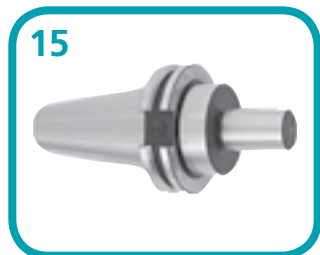
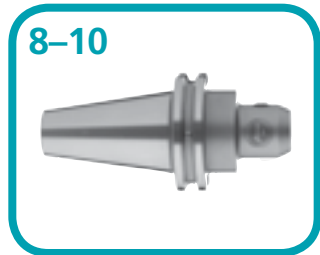
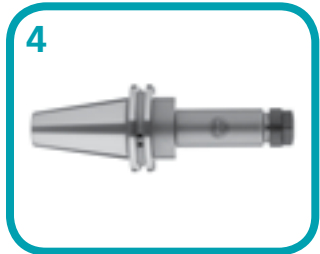
Quick Change Toolposts.....	90
Solid Sockets with MT Hole.....	91
Right Hand Nuts.....	91
Solid Spacers with Keyways.....	92
Running Bushings.....	92
Drill Drifts, Hardened and Zinc Plated.....	93
Universal H/V CNC Tool Tightening Fixtures.....	93

## INDEX

Index By Product Group.....	96
TMX Made In Poland Supplier Model # Cross Reference.....	98
Part Number Conversion 7s to 8s.....	100



## CONTENTS



- 4 ER Collet Chucks
- 6 Double Angle Collet Chucks
- 7 TG Collet Chucks
- 8 End Mill Holders CAT 40
- 10 End Mill Holders CAT 50
- 12 Shell Mill/Face Mill Arbor Holders
- 14 Face Mill Holders CAT 50
- 14 Precision Ball Bearing Keyless Drill Chucks
- 15 Jacobs Taper Holders
- 15 Morse Taper Adapters
- 16 CAT 50 to CAT 40 Adapters
- 16 Stub Milling Arbors
- 17 Semi Flush Slitting Saw Holders
- 18 Rigid Tap Holders
- 19 Tension/Compression Tap Holders



# CAT V-Flange Tooling

Tooling Systems

CAT V-FLANGE

## ER Collet Chucks **NEW**



See TMX CAT ER Collet sets on page 68



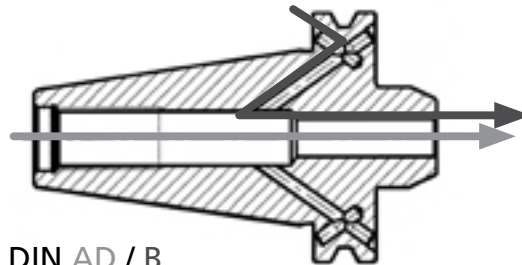
For ER collets, see page 70

### Features

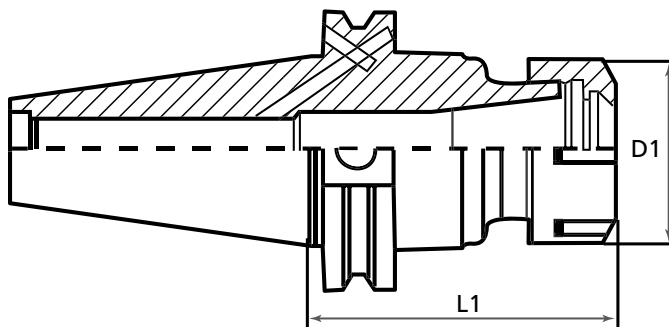
- Balanced and certified to 15,000 RPM/G6.3
- TMX DIN AD/B design as standard . AD is coolant through the spindle; B is coolant through the flange
- Constructed of Alloy Steel for long, durable service life
- Hardened to RC 57-59 to avoid damaging collet chuck threads
- Machined and shot blast exterior for surface integrity
- Accepts ER collets
- QA Lab inspected for dimensional accuracy
- Individual balance certification included
- For Individual ER Collets see page 70

### Dimensional Information

- Collet seat taper T.I.R.  $\leq .0002''$
- Draw bar thread for CAT 40 = 5/8-11, CAT 50 = 1"-8
- ANSI B5.50-1994
- AT3 taper accuracy for excellent holder / spindle engagement



DIN AD / B  
Coolant Through



Hex Nut (H)



Slotted Round Nut (S)

# CAT V-Flange Tooling



Tooling Systems

CAT V-FLANGE

## ER Collet Chucks (continued) **NEW**



See diagrams on previous page

CAT 40 Flange Screws: M4 x .7 x 4mm long = 8-815-180, CAT 50 Flange Screws: M5 x .8 x 5mm long = 8-815-185

Collet Type	Gage Length L1 (in)	CAT 40 Part Number	CAT 50 Part Number	Clamping Range (in)	Nut Style*	Nut OD D1	Nut Thread	Nut Part Number	Wrench Part Number	Adjusting Screw Size	Adjusting Screw Part Number
ER11	3	8-100-4005	—	1/32–1/4	H	19 mm (.75in)	M14 x .75	8-800-011	8-810-011	5/16-18 x 1/2"	8-815-011
ER16	2-1/2	—	8-100-5010	1/32–13/32	H	28 mm (1.1in)	M22 x 1.5	8-800-016	8-810-016	7/16-16 x 1/2"	8-815-016
	2-3/4	8-100-4010	—								
	4	8-100-4015	8-100-5015								
	6	8-100-4020	8-100-5020								
	8	8-100-4025	8-100-5025								
ER20	10	—	8-100-5027	1/16–1/2	H	34 mm (1.34in)	M25 x 1.5	8-800-020	8-810-020	9/16-16 x 1/2"	8-815-020
	2-1/2	—	8-100-5030								
	2-3/4	8-100-4030	—								
	4	8-100-4035	8-100-5035								
	6	8-100-4040	8-100-5040								
ER25	8	8-100-4045	8-100-5045	1/16–5/8	S	42 mm (1.65in)	M32 x 1.5	8-800-025	8-810-025	11/16-16 x 1/2"	8-815-025
	10	—	8-100-5047								
	2-1/2	—	8-100-5050								
	2-3/4	8-100-4050	—								
	4	8-100-4055	8-100-5055								
ER32	6	8-100-4060	8-100-5060	3/32–3/4	S	50 mm (1.97in)	M40 x 1.5	8-800-032	8-810-032	7/8-16 x 1/2"	8-815-032
	8	—	8-100-5062								
	10	—	8-100-5064								
	2-1/2	8-100-4065	—								
	2-3/4	—	8-100-5065								
	3	8-100-4070	—								
ER40	4	8-100-4075	8-100-5075	1/8–1	S	63 mm (2.48in)	M50 x 1.5	8-800-040	8-810-040	1-1/8-16 x 1/2"	8-815-040
	6	8-100-4080	8-100-5080								
	8	8-100-4085	8-100-5085								
	10	—	8-100-5087								
	2-3/4	8-100-4090	8-100-5090								
ER40	4	8-100-4095	8-100-5095	1/8–1	S	63 mm (2.48in)	M50 x 1.5	8-800-040	8-810-040	1-1/8-16 x 1/2"	8-815-040
	6	8-100-4100	8-100-5100								
	8	—	8-100-5105								
	10	—	8-100-5110								

\*H = Hex Nut, S = Slotted Round Nut



For ER collets, see page 70

See TMX CAT ER Collet sets on page 68







# CAT V-Flange Tooling

Tooling Systems

CAT V-FLANGE

## Double Angle Collet Chucks

**MADE IN POLAND**

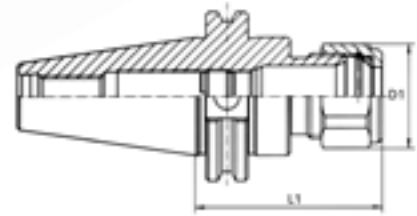
- Through the spindle coolant capability
- Draw Bar Threads: CAT 40 5/8" -11 and CAT 50 1" - 8
- Collet seat taper T.I.R. < .0002"
- Retention knobs sold separately
- Wrenches sold separately
- For Individual DA Collets see page 76



For DA Precision Collets, see page 76

Supplier Model # 7652

Taper Size	Collet Type	Gage Length L1 (in)	Part Number	Clamping Range (in)	Major Diameter D1 (in)	Part Numbers	
						Nut	Wrench
40	DA 200	3	8-102-4105	1/8-9/16	1.07	8-800-1020	8-810-1020
	DA 180	2-3/4	8-102-4115	1/8-3/4	1.54		
		4	8-102-4120				
50	DA 180	4	8-102-5120	1/8-3/4	1.54	8-800-1018	8-810-1018
		6	8-102-5125				
		8	8-102-5130				



# CAT V-Flange Tooling



Tooling Systems

CAT V-FLANGE

## TG Collet Chucks

**MADE IN POLAND**

- Through the spindle coolant capability
- Draw Bar Threads: CAT 40 5/8"-11 and CAT 50 1" - 8
- Collet seat taper T.I.R. < .0002"
- Wrenches sold separately
- Retention knobs sold separately
- For Individual TG Collets see page 75

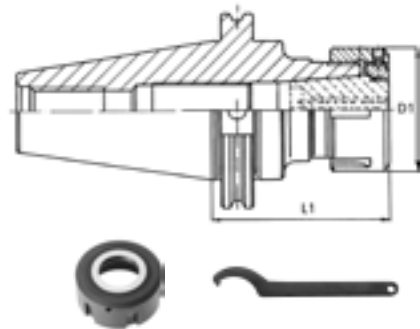


For TG Precision Collets, see page 75



Supplier Model # 7614

Taper Size	Collet Type	Gage Length L1 (in)	Part Number	Clamping Range (in)	Major Diameter D1 (in)	Nut	Wrench
						Part Numbers	
40	TG100	3	8-102-4213	3/32-1	2-1/2	8-800-2010	8-810-2010
		4	8-102-4214				
		6	8-102-4215				
50	TG100	3-1/2	8-102-5213	3/32-1	2-1/2		
		5-1/2	8-102-5215				
		7-1/2	8-102-5217				





# CAT V-Flange Tooling

Tooling Systems

CAT V-FLANGE

## End Mill Holders CAT 40 **NEW**

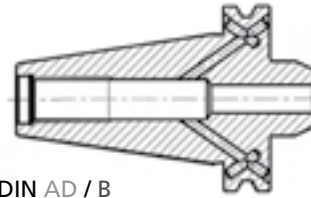
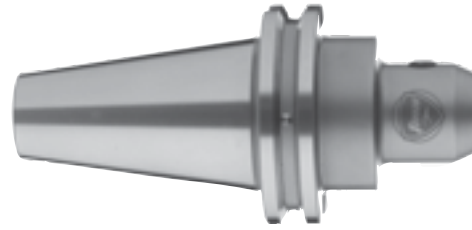
For CAT 50 End Mill Holders, see page 10

### Features

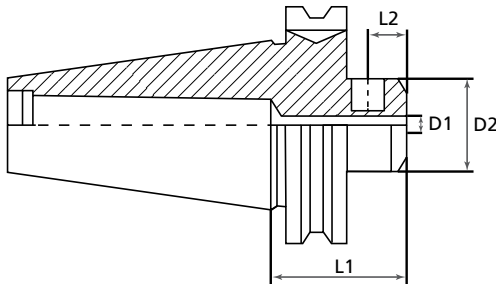
- Balanced and certified to 15,000 RPM/G6.3
- TMX DIN AD/B design as standard. AD is coolant through the spindle; B is coolant through the flange
- Will accommodate single and double ended end mills
- Low harmonic vibration increases tool life and improves surface finish
- Machined and shot blast exterior for surface integrity

### Dimensional Information

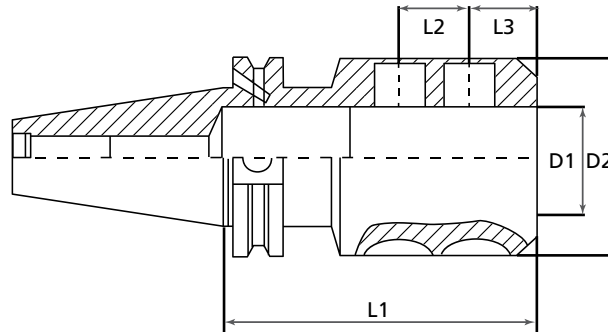
- AT3 taper accuracy for excellent holder / spindle engagement
- Draw bar thread for CAT 40 = 5/8"–11
- ANSI B5.50-1994
- H5 inside diameter tolerance
- Maximum run out is .0002"(.005mm) TIR for concentric machining



DIN AD / B  
Coolant Through



One Set Screw



Two Set Screws

Flange Screws: M4 x .7 x 4mm long = 8-815-180

ID D1 (in)	Gage Length L1 (in)	Part Number	Major Diameter D2 (in)	Locking Screw 1 Position L2 (in)	Locking Screw 2 Position L3 (in)	Coolant Through Type	Number of side locking set screws	Socket Set Screw Size (dia-pitch x length)	Socket Set Screw Part Number
1/8	1-3/8	8-110-4005	.75	.30	-	AD/B	1	# 8-32 x 5/16	8-815-105
	2-1/2	8-110-4010							
	4	8-110-4015							
	6	8-110-4020							
3/16	1-3/8	8-110-4025	.75	.41	-	AD/B	1	# 10-32 x 5/16	8-815-110
	2-1/2	8-110-4030	.75	.44					
	4	8-110-4035	.75	.44					
1/4	1-3/8	8-110-4040	.81	.60	-	AD/B	1	1/4-28 x 1/4	8-815-115
	2-1/2	8-110-4045							
	4	8-110-4050	.81						
	6	8-110-4055	.81						
5/16	1-3/8	8-110-4065	.88	.41	-	AD/B	1	5/16-24 x 1/4	8-815-120
	2-1/2	8-110-4070	.88	.63					
	4	8-110-4075	.88	.63					
	9	8-110-4080	.88	.63					

# CAT V-Flange Tooling



Tooling Systems

## End Mill Holders CAT 40 (continued)

**NEW**

For CAT 50 End Mill Holders, see page 10



See diagrams on previous page

Flange Screws: M4 x .7 x 4mm long = 8-815-180

CAT V-FLANGE

ID D1 (in)	Gage Length L1 (in)	Part Number	Major Diameter D2 (in)	Locking Screw 1 Position L2 (in)	Locking Screw 2 Position L3 (in)	Coolant Through Type	Number of side locking set screws	Socket Set Screw Size (dia-pitch x length)	Socket Set Screw Part Number
3/8	1-3/8	8-110-4085	1.00	.41	-	AD/B	1	3/8-24 x 25/64	8-815-125
	2-1/2	8-110-4090		.75					
	4	8-110-4095		.75					
	5	8-110-4100		.75					
	9	8-110-4105		.75					
7/16	2-1/2	8-110-4110	1.13	.75	-	AD/B	1	3/8-24 x 25/64	8-815-125
	4	8-110-4115							
1/2	1-3/4	8-110-4120	1.25	.65	-	AD/B	1	7/16-20 x 15/32	8-815-130
	2-1/2	8-110-4125							
	4	8-110-4130		.79					
	5	8-110-4135							
5/8	1-3/4	8-110-4145	1.50	.59	-	AD/B	1	9/16-18 x 35/64	8-815-135
	3	8-110-4150							
	4	8-110-4155		.88					
	5-1/2	8-110-4160							
3/4	1-3/4	8-110-4170	1.75	.59	-	AD/B	1	5/8-18 x 1/2	8-815-140
	3	8-110-4175							
	4	8-110-4180		.91					
	5-1/2	8-110-4185							
	6	8-110-4190							
7/8	1-3/4	8-110-4195	1.88	.59	-	AD	1	5/8-18 x 9/16	8-815-145
	3-1/2	8-110-4200	1.88	.65	.81	AD/B	2		
	6	8-110-4205							
1	2	8-110-4210	2.25	.79	-	AD	1	3/4-16 x 45/64	8-815-150
	4	8-110-4215	2.36	1.12	1.00	AD/B	2		
	6	8-110-4220							
	9	8-110-4225							
1-1/4	2	8-110-4230						2.25	.79
	4	8-110-4235	2.50	.83	.90	AD/B	2		
	6	8-110-4240							
	8	8-110-4245							
1-1/2	4-1/2	8-110-4255						2.50	.88
	6	8-110-4260							
	8	8-110-4265							



# CAT V-Flange Tooling

Tooling Systems

**NEW**

## End Mill Holders CAT 50

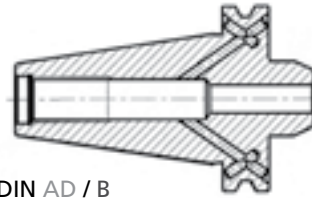
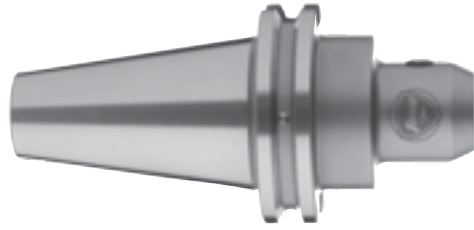
For CAT 40 End Mill Holders, see page 8

### Features

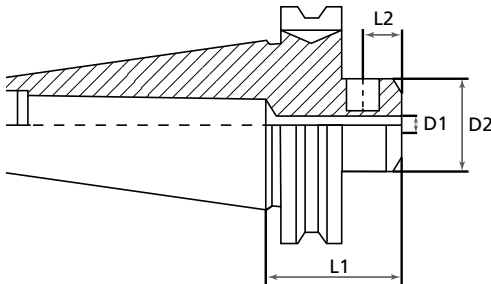
- Balanced and certified to 15,000 RPM/G6.3
- TMX DIN AD/B design as standard. AD is coolant through the spindle; B is coolant through the flange
- Will accommodate single and double ended end mills
- Low harmonic vibration increases tool life and improves surface finish
- Machined and shot blast exterior for surface integrity

### Dimensional Information

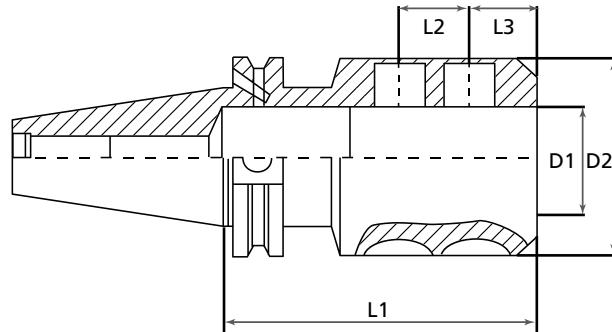
- AT3 taper accuracy for excellent holder / spindle engagement
- Draw bar thread for CAT 50 = 1"–8
- ANSI B5.50-1994
- H5 inside diameter tolerance
- Maximum run out is .0002"(.005mm) TIR for concentric machining



DIN AD / B  
Coolant Through



One Set Screw



Two Set Screws

Flange Screws: M5 x .8 x 5mm long = 8-815-185

D1 ID (in)	L1 Gage Length (in)	Part Number	Major Diameter D2 (in)	Locking Screw 1 Position L2 (in)	Locking Screw 2 Position L3 (in)	Coolant Through Type	Number of side locking set screws	Socket Set Screw Size (dia-pitch x length)	Socket Set Screw Part Number
1/4	1-3/8	8-110-5040	2.75	.41	-	AD/B	1	1/4-28 x 1/4	8-815-115
	2-1/2	8-110-5045	.81	.60					
	4	8-110-5050							
	6	8-110-5055							
5/16	1-3/8	8-110-5065	2.75	.41	-	AD/B	1	5/16-24 x 1/4	8-815-120
	2-1/2	8-110-5070	.88	.63					
	4	8-110-5075							
3/8	1-3/8	8-110-5085	2.75	.41	-	AD/B	1	3/8-24 x 25/64	8-815-125
	2-1/2	8-110-5090							
	4	8-110-5095							
	6	8-110-5100							
	8	8-110-5105							
	14	8-110-5107							

# CAT V-Flange Tooling



Tooling Systems

CAT V-FLANGE

## End Mill Holders CAT 50 (continued)

**NEW**

For CAT 40 End Mill Holders, see page 8



See diagrams on previous page

Flange Screws: M5 x .8 x 5mm long = 8-815-185

D1 ID (in)	L1 Gage Length (in)	Part Number	Major Diameter D2 (in)	Locking Screw 1 Position L2 (in)	Locking Screw 2 Position L3 (in)	Coolant Through Type	Number of side locking set screws	Socket Set Screw Size (dia-pitch x length)	Socket Set Screw Part Number
7/16	2-1/2	8-110-5110	1.13	.75	-	AD/B	1	3/8-24 x 25/64	8-815-125
	4	8-110-5115							
	6	8-110-5117							
1/2	1-3/4	8-110-5120	1.25	.79	-	AD/B	1	7/16-20 x 15/32	8-815-130
	2-1/2	8-110-5125							
	4	8-110-5130							
	6	8-110-5135							
	8	8-110-5140							
	10	8-110-5142							
14	8-110-5144								
5/8	1-3/4	8-110-5145	1.50	.88	-	AD/B	1	9/16-18 x 35/64	8-815-135
	3	8-110-5150							
	4	8-110-5155							
	6	8-110-5160							
	8	8-110-5165							
	10	8-110-5167							
14	8-110-5169								
3/4	1-3/4	8-110-5170	1.75	.91	-	AD/B	1	5/8-18 x 1/2	8-815-140
	3	8-110-5175							
	4	8-110-5180							
	6	8-110-5185							
	8	8-110-5190							
	10	8-110-5192							
14	8-110-5194								
7/8	1-3/4	8-110-5195	1.88	.65	.81	AD/B	1	5/8-18 x 9/16	8-815-145
	3-1/2	8-110-5200							
	6	8-110-5205							
1	2	8-110-5210	2.36	1.12	1.00	AD/B	1	3/4-16 x 45/64	8-815-150
	4	8-110-5215							
	6	8-110-5220							
	9	8-110-5225							
	14	8-110-5227							
1-1/4	2	8-110-5230	2.50	.83	.90	AD/B	1	3/4-16 x 45/64	8-815-150
	4	8-110-5235							
	6	8-110-5240							
	8	8-110-5245							
	14	8-110-5247							
1-1/2	4-1/2	8-110-5255	2.50	.88	1.06	AD/B	2	3/4-16 x 25/32	8-815-155
	6	8-110-5260							
	9	8-110-5265							
2	5-5/8	8-110-5275	3.75	1.36	1.30	AD/B	2	1-14 x 15/16	8-815-165
	10	8-110-5280							
2-1/2	6	8-110-5285	101.6	39.264	38.1	AD/B	2	1-14 x 7/8	8-815-165



# CAT V-Flange Tooling

Tooling Systems

CAT V-FLANGE

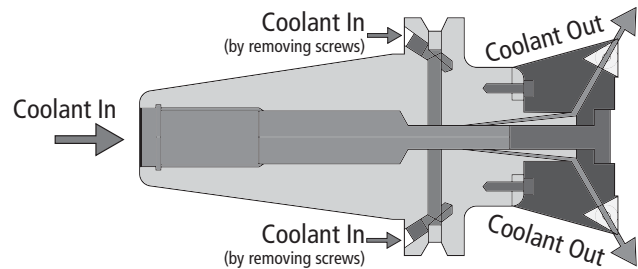
## Shell Mill/Face Mill Arbor Holders **NEW**

### Features

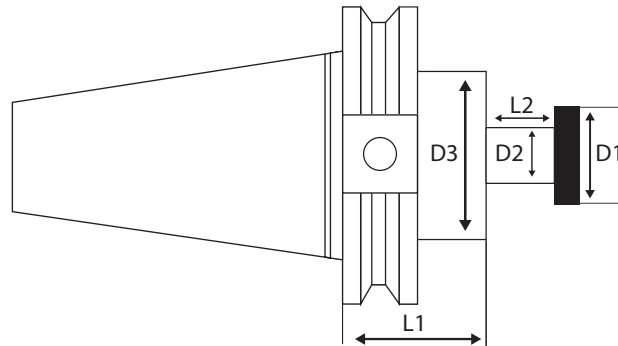
- Works with arbor mounted face mills
- DIN AD/B + C Coolant Specifications – allow for coolant delivery at the point of cut for indexable shell mills and face mills
- AD is coolant through the spindle; B is coolant through the flange; C is coolant through exiting at the point of cut.
- Balance and certified to 15,000 RPM / G6.3
- QA Lab inspected for dimensional accuracy
- Machined and shot blast exterior for surface integrity
- Compatible with standard machines

### Dimensional Information

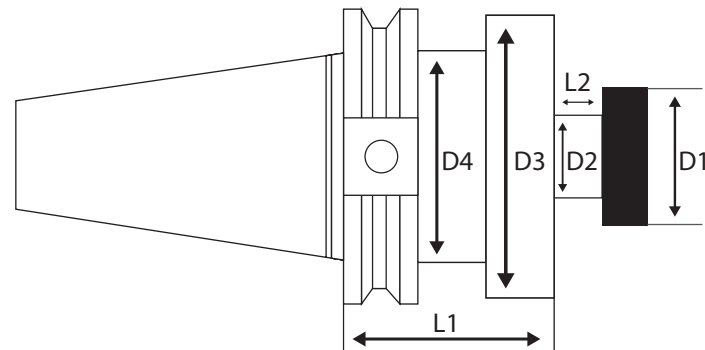
- Max run out of .0002" (.005mm) TIR
- ANSI B5.50-1994
- AT3 taper accuracy for excellent holder / spindle engagement



Type A



Type B



# CAT V-Flange Tooling



Tooling Systems

## Shell Mill/Face Mill Arbor Holders CAT 40 **NEW**

CAT 40 Flange Screws: M4 x .7 x 4mm long = 8-815-180

Arbor/Pilot Diameter D2 (in)	Gage Length L1 (in)	CAT 40 Part Number	Head Diameter D1 (in)	Pilot Length L2 (in)	Major Diameter D3 (in)	Body Type	Neck Diameter D4 (in)	Arbor Screw Thread	Arbor Screw Part Number	Key Width (in)	Key Part Number
1/2	1-3/8	8-120-4005	.62	.56	1.44	A	—	1/4-28	8-815-805	1/4	8-820-025
	4	8-120-4010	.62	.56	1.44	A	—				
3/4	1-3/8	8-120-4015	.88	.68	1.69	A	—	3/8-24	8-815-807	5/16	8-820-031
	4	8-120-4020	.88	.68	1.69	A	—				
	6	8-120-4025	.88	.68	1.69	A	—				
1	2	8-120-4030	1.18	.68	2.19	B	1.75	1/2-20	8-815-810	3/8	8-820-037
	4	8-120-4035	1.18	.68	2.19	B	1.75				
	6	8-120-4040	1.18	.68	2.19	B	1.75				
1-1/4	2	8-120-4045	1.50	.68	2.75	B	1.75	5/8-18	8-815-812	1/2	8-820-050
	4	8-120-4050	1.50	.68	2.75	B	1.75				
	6	8-120-4055	1.50	.68	2.75	B	1.75				
1-1/2	2-1/4	8-120-4060	1.88	.94	3.81	B	1.75	3/4-16	8-815-815	5/8	8-820-062
	4	8-120-4065	1.88	.94	3.81	B	1.75				

CAT V-FLANGE

## Shell Mill/Face Mill Arbor Holders CAT 50 **NEW**

CAT 50 Flange Screws: M5 x .8 x 5mm long = 8-815-185

Arbor/Pilot Diameter (in)	Gage Length L1 (in)	CAT 50 Part Number	Head Diameter D1 (in)	Pilot Length L2 (in)	Major Diameter D3 (in)	Body Type	Neck Diameter D4 (in)	Arbor Screw Thread	Arbor Screw Part Number	Key Width (in)	Key Part Number
1/2	1-1/2	8-120-5005	.62	.56	2.75	A	—	1/4-28	8-815-805	1/4	8-820-025
	3-1/2	8-120-5010			1.44						
	5-1/2	8-120-5012									
3/4	1-1/2	8-120-5015	.88	.68	2.75	A	—	3/8-24	8-815-807	5/16	8-820-031
	3-1/2	8-120-5020			1.69						
	5-1/2	8-120-5025									
	8	8-120-5027									
1	2	8-120-5030	1.18	.68	2.19	A	—	1/2-20	8-815-810	3/8	8-820-037
	4	8-120-5035									
	6	8-120-5040									
	8	8-120-5042									
1-1/4	1-1/2	8-120-5045	1.50	.68	2.75	A	—	5/8-18	8-815-812	1/2	8-820-050
	3-1/2	8-120-5050									
	6	8-120-5055									
	8	8-120-5057									
1-1/2	2.4	8-120-5060	1.88	.94	3.81	B	2.75	3/4-16	8-815-815	5/8	8-820-062
	4	8-120-5065									
	6	8-120-5070									
	8	8-120-5075									
2	2.4	8-120-5080	2.50	.94	4.88	B	2.75	1-14	8-815-820	3/4	8-820-075
	4	8-120-5085									
	6	8-120-5090									





# CAT V-Flange Tooling

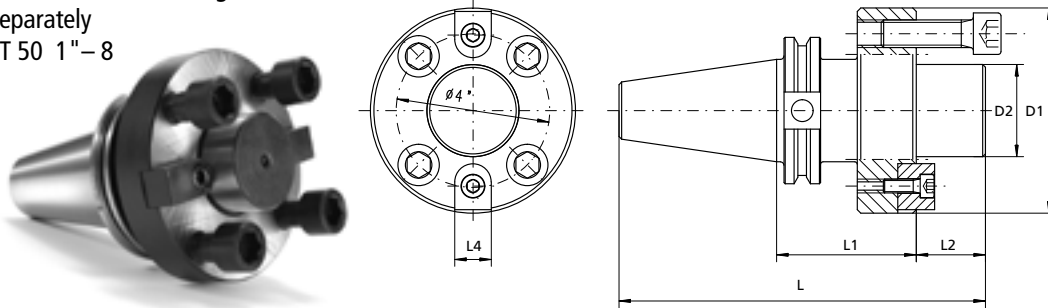
Tooling Systems

CAT V-FLANGE

## Face Mill Holders CAT 50

**MADE IN POLAND**

- Shell Mill Pilot T.I.R. < 0.0002"
- Holders are provided with four mounting holes with 5/8"-11 thread on a 4" bolt circle diameter to hold 8" or larger Face Mill Cutters
- Retention knobs sold separately
- Draw Bar Threads: CAT 50 1"-8



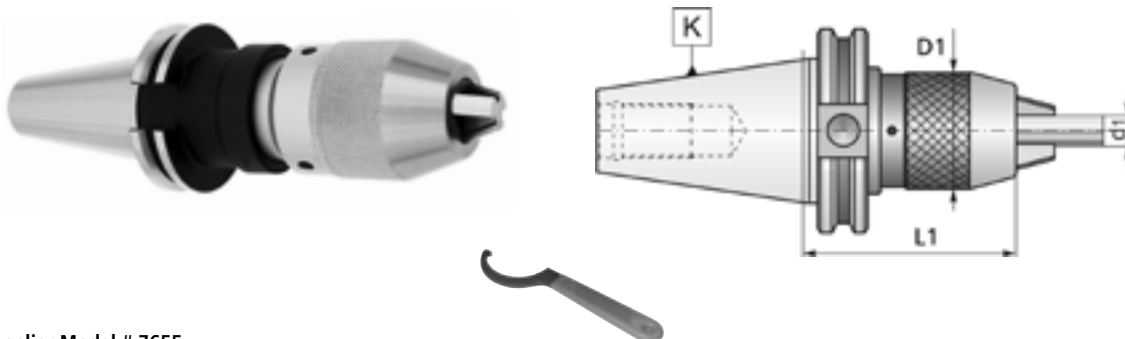
Supplier Model # 7382

Taper Size	Gage Length L1 (in)	Arbor Diameter D2 (in)	Part Number	Overall Length L (in)	Arbor Length L2 (in)	Drive Key L4 (in)	Major Diameter D1 (in)
50	2.4	2	8-122-5202	7.3	15/16	3/4	4.88
	2.4	2-1/2	8-122-5252	7.5	1-1/8	1	5.06
	4		8-122-5254	9.1			

## Precision Ball Bearing Keyless Drill Chucks

**MADE IN POLAND**

- CAT shanks are produced according to AT3 specification
- Made of Alloy Forged Steel for a long, durable service life
- Integral shank design is more compact than a combined drill chuck and arbor for greater accuracy and rigidity
- Keyless operations
- Self-tightening, clockwise rotation only
- Maximum T.I.R. 0.0015"
- Draw Bar Threads: CAT 40 5/8"-11 and CAT 50 1"-8



Supplier Model # 7655

Taper Size K	Capacity d1		Gage Length L1 (in)	Part Number	Major Diameter D1 (in)	Wrench Part Number
	inches	mm				
40	1/32-1/2	1-13	4.13	8-130-4033	2	8-810-932K
	1/8-5/8	3-16	5.12	8-130-4035	2-1/4	
50	1/32-1/2	1-13	4.13	8-130-5063	2	
	1/8-5/8	3-16	4.33	8-130-5065	2 1/4	

# CAT V-Flange Tooling



Tooling Systems

CAT V-FLANGE

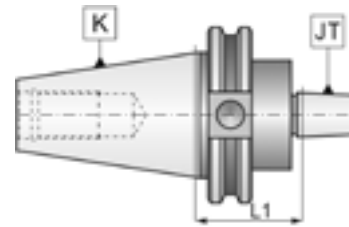
## Jacobs Taper Holders **NEW**

- Produced according to AT3 specifications
- Retention knobs are sold separately
- Draw Bar Threads: CAT 40 5/8" -11  
CAT 50 1" - 8



For drill chucks, see page 66

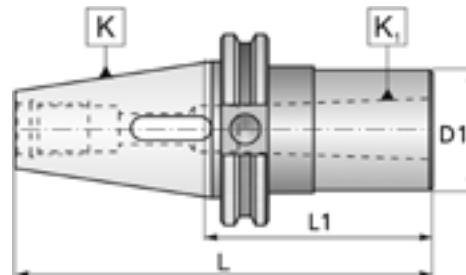
Jacobs Taper (JT)	Gage Length L1 (in)	CAT 40 (K) Part Number	CAT 50 (K) Part Number
2	1-1/2	8-132-4002	8-132-5002
3		8-132-4003	8-132-5003
4		8-132-4004	8-132-5004
6		8-132-4006	8-132-5006
33		8-132-4033	8-132-5033



## Morse Taper Adapters

**MADE IN POLAND**

- Produced according to AT3 specifications
- Made of Alloy Forged Steel for long, durable service life
- Morse Taper Seat T.I.R. < 0.0002"
- Hardened to RC 56-60 and ground to ensure maximum accuracy
- Retention knobs sold separately
- Draw Bar Threads: CAT 40 5/8" -11 and CAT 50 1" - 8



Supplier Model # 1691

Taper Size K	MT Hole K1	Gage Length L1 (in)	Part Number	Major Diameter D1 (in)	Overall Length L (in)
40	2	2	8-136-4002	1-1/4	5-9/16
	3	3	8-136-4003	1-3/4	6-9/16
	4	3-1/2	8-136-4004	2	7-1/16
50	2	2	8-136-5002	1-1/4	6
	3	2-1/2	8-136-5003	1-5/8	6-1/2
	4	3-3/8	8-136-5004	2	7-3/8
	5	4	8-136-5005	2-3/4	8



# CAT V-Flange Tooling

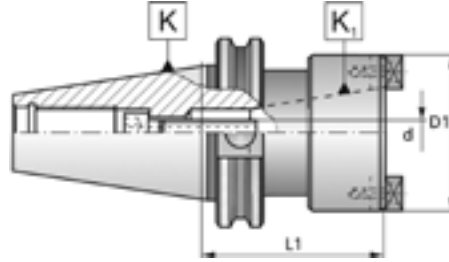
Tooling Systems

CAT V-FLANGE

## CAT 50 to CAT 40 Adapters

**MADE IN POLAND**

- Produced according to AT3 specifications
- Made of Alloy Forged Steel for long, durable service life
- Morse Taper Seat T.I.R. < 0.0002"
- Each Adapter is provided with the draw bar screw with the thread 5/8" – 11
- Retention knobs sold separately
- Draw Bar Threads: CAT 40 5/8"-11 and CAT 50 1"-8



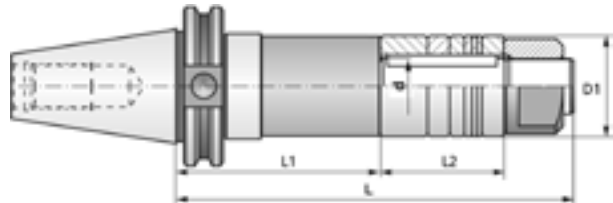
Supplier Model # 1684

Taper Size K	Taper Number Hole K1	Gage Length L1 (in)	Part Number	Major Diameter D1 (in)	Arbor Diameter d (in)
50	40	3.150	8-136-5040	3.46	.65

## Stub Milling Arbors

**MADE IN POLAND**

- Face is held perpendicular to centerline within 0.0002"
- Pilot diameter is sized for precision fit with cutter, and keyed for positive drive
- Heavy duty locking right-hand nut and 5 arbor spacers are included: 1/16", 1/8", 1/4", 3/8", and 3/4"
- Retention knobs sold separately
- Draw Bar Threads: CAT 40 5/8"-11 and CAT 50 1"-8



Supplier Model # 7318

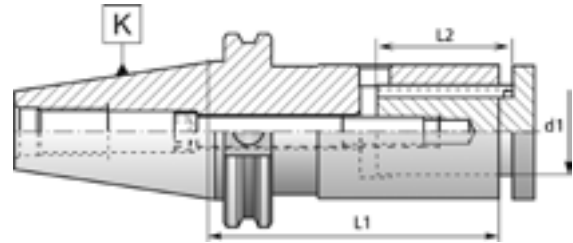
Taper Size	Arbor Dia d (in)	Gage Length L1 (in)	Part Number	Overall Length L (in)	L2 (in)	Major Dia D1 (in)	Nut Part Number	1/16" Spacer 2 Pc Part Number	1/8" Spacer 1 Pc Part Number	1/4" Spacer 1 Pc Part Number	3/8" Spacer 2 Pc Part Number	3/4" Spacer 1 Pc Part Number
40	1	4	8-162-4010	7.5	2	1.5	8-800-610R	8-825-0090	8-825-0100	8-825-0110	8-825-0120	8-825-0140
	1.25		8-162-4015	7.75		1.75	8-800-615R	8-825-0175	8-825-0185	8-825-0195	8-825-0205	8-825-0225
	1.5		8-162-4020	8.0		2.125	8-800-620R	8-825-0260	8-825-0270	8-825-0280	8-825-0290	8-825-0300
50	1	4	8-162-5010	7.5	2	1.5	8-800-610R	8-825-0090	8-825-0100	8-825-0110	8-825-0120	8-825-0140
		6	8-162-5015	9.5			8-800-610R	8-825-0090	8-825-0100	8-825-0110	8-825-0120	8-825-0140
	1.25	4	8-162-5020	7.75		1.75	8-800-615R	8-825-0175	8-825-0185	8-825-0195	8-825-0205	8-825-0225
		6	8-162-5025	9.75			8-800-615R	8-825-0175	8-825-0185	8-825-0195	8-825-0205	8-825-0225
	1.5	4	8-162-5030	8.0		2.125	8-800-620R	8-825-0260	8-825-0270	8-825-0280	8-825-0290	8-825-0300
		6	8-162-5035	10.0			8-800-620R	8-825-0260	8-825-0270	8-825-0280	8-825-0290	8-825-0300



## Semi Flush Slitting Saw Holders

**MADE IN POLAND**

- Face is held perpendicular to centerline within 0.0002"
- Designed for slitting saws up to 5/16" thick
- Use a Stub Arbor Holder for wider cutters
- Pilot diameter is sized for precision fit with cutter and is keyed for positive drive
- Semi-flush nose cap gets in tight areas
- Cap is included
- Retention knob, drive key, and wrench sold separately
- Draw Bar Threads: CAT 40 5/8"-11 and CAT 50 1"-8



Please refer to our 2015 TMX Cutting Tools Catalog or [www.tmxtools.com](http://www.tmxtools.com) for a full selection of Slitting Saws

Supplier Model # 7374

Taper Size K	Arbor Dia d (in)	Gage Length L1 (in)	Part Number	L2 (in)	Holder Screw Size	Cap	Drive Key	Hex Key
40	5/8	4	8-162-4105	1.77	M8 x 1.25	8-830-9050	8-820-8050	6-999-586
	1		8-162-4110		M10 x 1.5	8-830-9100	-	6-999-588
	1-1/4		8-162-4120		8-830-9150	8-820-8150		
50	1	4	8-162-5110	1.77	M10 x 1.5	8-830-9100	-	6-999-588
		6	8-162-5115	3		8-830-9100	8-820-8350	



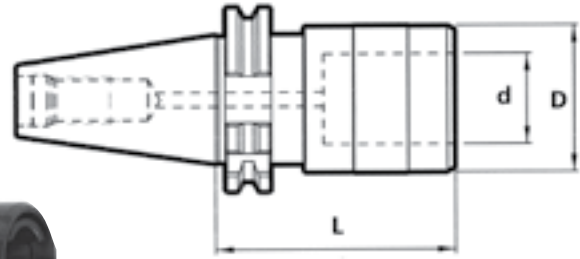
# CAT V-Flange Tooling

Tooling Systems

CAT V-FLANGE

## Rigid Tap Holders

- Quick Change
- Compatible with BILZ System
- Through spindle coolant capability
- Tap Holder and Adapter set available
- Draw Bar Threads:
  - CAT 40 5/8" - 11
  - CAT 50 1" - 8



For tap adapters, see page 82

Taper Size	ID d (mm)	Gage Length L (in)	Part Number	Major Dia D (in)	Tap Capacity	Adapter Size	Tap Shank Dia
40	19	2.638	8-145-4010	1.3	M1.6-M14 0-9/16" 1/8" NPT	#1	0.110-0.472
	31	3.543	8-145-4020	1.97	M7-M20 5/16"-7/8" 1/8"-1/2" NPT	#2	0.236-0.866
	48	4.606	8-145-4030	2.83	M12-M33 5/16"-7/8" 1/8"-1/2" NPT	#3	0.354-1.417
50	19	3.071	8-145-5010	1.3	M1.6-M14 0-9/16" 1/8" NPT	#1	0.110-0.472
	31	3.976	8-145-5020	1.97	M7-M20 5/16"-7/8" 1/8"-1/2" NPT	#2	0.236-0.866
	48	4.606	8-145-5030	2.83	M12-M33 5/16"-7/8" 1/8"-1/2" NPT	#3	0.354-1.417

## Rigid Tap Holder and Tap Adapters Set

Taper Size	Set Part Number	Tap Adapters Included in Set Part Number	Holder Included in Set Part Number	Tap Sizes
CAT40	8-145-4099	8-722-1036	8-145-4010	#6
		8-722-1041		#8
		8-722-1048		#10
		8-722-1054		#12
		8-722-1063		1/4
		8-722-1079		5/16
		8-722-1095		3/8
		8-722-1111		7/16
		8-722-1127		1/2
		8-722-1142		9/16



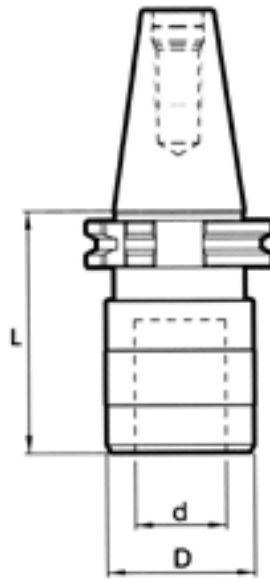


## Tension/Compression Tap Holders

- Quick Change
- Compatible with BILZ System
- This product does not have through spindle coolant capability
- Draw Bar Threads: CAT 40 5/8" -11 and CAT 50 1" - 8



For tap adapters, see page 83



Taper Size	ID d (mm)	Gage Length L (in)	Part Number	Major Dia D (in)	Tap Capacity	Adapter Size	Tap Shank Dia	Tension Compression
40	19	2.972	8-147-4010	1.30	M1.6-M14 0-9/16" 1/8" NPT	#1	0.110-0.472	0.3543
	31	3.397	8-147-4020	1.97	M7-M20 5/16"-7/8" 1/8"-1/2" NPT	#2	0.236-0.866	0.5906
	48	5.394	8-147-4030	2.83	M12-M33 9/16"-1-3/8" 3/4"-1" NPT	#3	0.354-1.417	0.9449
50	19	2.972	8-147-5010	1.30	M1.6-M14 0-9/16" 1/8" NPT	#1	0.110-0.472	0.3543
	31	3.397	8-147-5020	1.97	M7-M20 5/16"-7/8" 1/8"-1/2" NPT	#2	0.236-0.866	0.5906
	48	5.197	8-147-5030	2.83	M12-M33 9/16"-1-3/8" 3/4"-1" NPT	#3	0.354-1.417	0.9449
	60	5.787	8-147-5040	3.86	M36-M42 1-1/2"-1-7/8" 1-1/4"-1-1/2" NPT	#4	0.630-1.417	1.0236





## CONTENTS



- 22 ER Collet Chucks
- 23 TG Collet Chucks
- 24 Precision Ball Bearing
- Keyless Drill Chucks
- 25 End Mill Holders
- 27 Shell Mill/Face Mill Arbor Holders
- 28 Jacobs Taper Holders
- 29 Rigid Tap Holders
- 29 Tension/Compression Tap Holders

BT FLANGE





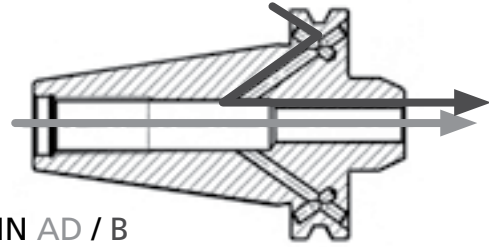
# BT Flange Tooling

Tooling Systems

BT FLANGE

## ER Collet Chucks **NEW**

- Balanced and certified to 15,000 RPM/G6.3
- TMX DIN AD/B design as standard. AD is coolant through the spindle; B is coolant through the flange
- Constructed of Alloy Steel for long, durable service life
- Hardened to RC 57-59 to avoid damaging collet chuck threads
- Machined and shot blast exterior for surface integrity
- Accepts ER collets
- QA Lab inspected for dimensional accuracy
- Individual balance certification included
- Collet seat taper T.I.R.  $\leq 0.0002''$
- AT3 taper accuracy for excellent holder / spindle engagement



DIN AD / B  
Coolant Through\*

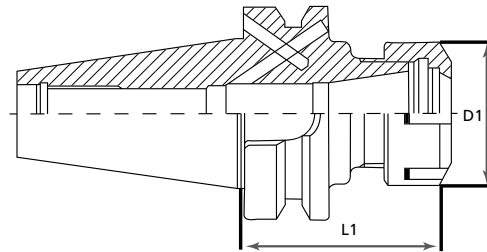


For ER collets, see page 70



## Flange Information

Taper Size	Draw Bar Thread	Flange Screw Size	Flange Screw Part Number
30	M12 x 1.75	–	–
40	M16 x 2	M4-0.7 x 4mm	8-815-180
50	M24 x 3	M5-0.8 x 5 mm	8-815-185



Taper Size	Collet Type	Gage Length L1 (in)	Part Number	Clamping Range (in)	Nut Style†	Nut Thread	D1 Nut OD		Nut Part Number	Wrench Part Number	Adjusting Screw Size	Adjusting Screw Part Number
							mm	in				
30*	ER16	2.5	8-200-3010*	1/32–13/32	H	M22 x 1.5	28	1.1	8-800-016	8-810-016	7/16-16x1/2	8-815-016
	ER20	2.5	8-200-3030*	1/16–1/2	H	M25 x 1.5	34	1.34	8-800-020	8-810-020	9/16-16x1/2	8-815-020
	ER25	2.5	8-200-3050*	1/16–5/8	S	M32 x 1.5	42	1.65	8-800-025	8-810-025	11/16-16x1/2	8-815-025
	ER32	3	8-200-3065*	3/32–3/4	S	M40 x 1.5	50	1.97	8-800-032	8-810-032	7/8-16x1/2	8-815-032
40	ER16	2.5	8-200-4010	1/32–13/32	H	M22 x 1.5	28	1.1	8-800-016	8-810-016	7/16-16x1/2	8-815-016
		4	8-200-4015									
	ER20	2.5	8-200-4030	1/16–1/2	H	M25 x 1.5	34	1.34	8-800-020	8-810-020	9/16-16x1/2	8-815-020
		4	8-200-4035									
	ER25	2.5	8-200-4050	1/16–5/8	S	M32 x 1.5	42	1.65	8-800-025	8-810-025	11/16-16x1/2	8-815-025
		4	8-200-4055									
	ER32	2.5	8-200-4065	3/32–3/4	S	M40 x 1.5	50	1.97	8-800-032	8-810-032	7/8-16x1/2	8-815-032
		4	8-200-4075									
6		8-200-4080										
ER40	2.75	8-200-4090	1/8–1	S	M50 x 1.5	63	2.48	8-800-040	8-810-040	1-1/8-16x1/2	8-815-040	
	4	8-200-4095										
50	ER32	2.75	8-200-5065	3/32–3/4	S	M40 x 1.5	50	1.97	8-800-032	8-810-032	7/8-16x1/2	8-815-032
	ER40	3	8-200-5090	1/8–1	S	M50 x 1.5	63	2.49	8-800-040	8-810-040	1-1/8-16x1/2	8-815-040

\*BT30 holders are AD coolant through only

†H = Hex Nut, S = Slotted Round Nut

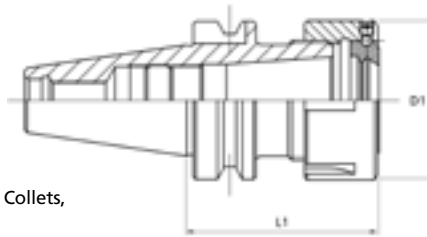


## TG Collet Chucks

**MADE IN POLAND**

- Completely interchangeable with all TG Collets
- Produced according to AT3 specifications
- Collet seat taper T.I.R. < .0002"
- Made of Alloy Forged Steel for a long durable service life
- Hardened to RC 52-56 and ground to ensure maximum accuracy
- Through spindle coolant capability
- Retention knobs are sold separately
- Wrench sold separately
- For individual TG collets, see page 75
- Draw Bar Threads:
 

BT 40	M16 x 2
BT 50	M24 x 3



For TG Precision Collets, see page 75

### Supplier Model # 7619

Taper Size	Collet Type	Gage Length L1 (in)	Part Number	Major Dia D1 (in)	Clamping Range (in)	Nut	Wrench
						Part Numbers	
40	TG100	3.00	8-202-4203	2.50	.094 to 1.0	8-800-2010	8-810-2010
		5.00	8-202-4205	1.5625			
		7.00	8-202-4207	1.875			
50	TG100	3.50	8-202-5203	2.50			





# BT Flange Tooling

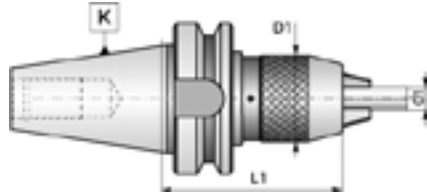
Tooling Systems

## Precision Ball Bearing Keyless Drill Chucks

- BT shanks are produced according to AT3 specification
- Made of Alloy Forged Steel for a long durable service life
- Integral shank design is more compact than a combined drill chuck and arbor for greater accuracy and rigidity
- Keyless operations

- Self-tightening, clockwise rotation only
- .00015" maximum T.I.R.
- Draw Bar Threads:
  - BT 40 M16 x 2
  - BT 50 M24 x 3

**MADE IN POLAND**



Supplier Model # 7656

Taper Size K	Capacity d1		Gage Length L1 (in)	Part Number	Major Dia D1 (in)	Wrench Part Number
	inches	mm				
40	.031 to .500	.794 to 12.7	3.74	8-230-4033	2.00	8-810-932K
	.125 to .625	3.175 to 15.875	3.94	8-230-4035	2.25	
50	.031 to .500	.794 to 12.7	4.13	8-230-5063	2.00	
	.125 to .625	3.175 to 15.875	4.33	8-230-5065	2.25	



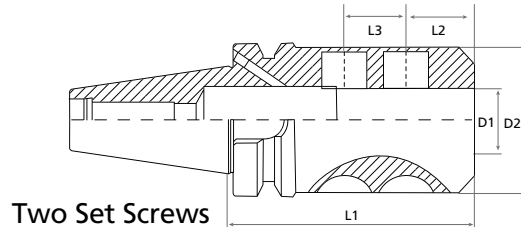
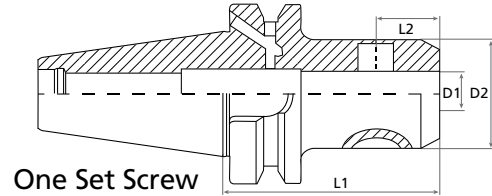
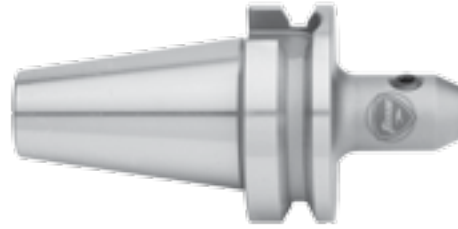
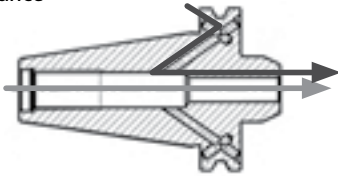
BT FLANGE



## End Mill Holders **NEW**

- Balanced and certified to 15,000 RPM/G6.3
- TMX DIN AD/B design as standard. AD is coolant through the spindle; B is coolant through the flange
- Will accommodate single and double ended end mills
- Low harmonic vibration increases tool life and improves surface finish
- Machined and shot blast exterior for surface integrity
- AT3 taper accuracy for excellent holder / spindle engagement
- Maximum run out is .0002" (.005mm) TIR for concentric machining
- H5 inside diameter tolerance

DIN AD / B  
Coolant Through\*



### Flange Information

Taper Size	Draw Bar Thread	Flange Screw Size	Flange Screw Part Number
30	M12 x 1.75	M4-0.7 x 4mm	8-815-180
40	M16 x 2	M4-0.7 x 4mm	8-815-180
50	M24 x 3	M5-0.8 x 5 mm	8-815-185

## End Mill Holders BT 30 **NEW**

\*BT30 holders are AD coolant through only

ID D1 (in)	Gage Length L1 (in)	Part Number	Major Dia D2 (in)	Locking Screw 1 Position L2 (in)	Locking Screw 2 Position L3 (in)	Coolant Through Type*	Number of Side Locking Set Screws	Socket Set Screw Size (dia-pitch x length)	Socket Set Screw Part Number
1/4	2-3/8	8-210-3045	.80	.60	–	AD	1	1/4-28 x 1/4	8-815-115
3/8	2-3/8	8-210-3090	1.00	.75	–	AD	1	3/8-24 x 25/64	8-815-125
1/2	2-3/8	8-210-3125	1.25	.79	–	AD	1	7/16-20 x 15/32	8-815-130
3/4	3	8-210-3175	1.75	.91	–	AD	1	5/8-18 x 1/2	8-815-140
1	3-1/2	8-210-3210	2.36	.94	1.00	AD	2	3/4-16 x 45/64	8-815-150

## End Mill Holders BT 40 **NEW**

ID D1 (in)	Gage Length L1 (in)	Part Number	Major Dia D2 (in)	Locking Screw 1 Position L2 (in)	Locking Screw 2 Position L3 (in)	Coolant Through Type	Number of Side Locking Set Screws	Socket Set Screw Size (dia-pitch x length)	Socket Set Screw Part Number
1/8	2-1/2	8-210-4010	.75	.30	–	AD/B	1	#8-32 x 5/16	8-815-105
	4	8-210-4015							
3/16	2-1/2	8-210-4030	.75	.44	–	AD/B	1	#10-32 x 5/16	8-815-110
	4	8-210-4035							
1/4	2-1/2	8-210-4045	.81	.60	–	AD/B	1	1/4-28 x 1/4	8-815-115
	4	8-210-4050							
5/16	2-1/2	8-210-4070	.88	.63	–	AD/B	1	5/16-24 x 1/4	8-815-120
3/8	2-1/2	8-210-4090	1.00	.75	–	AD/B	1	3/8-24 x 25/64	8-815-125
	4	8-210-4095							
7/16	2-1/2	8-210-4110	1.13	.75	–	AD/B	1	3/8-24 x 25/64	8-815-125
1/2	2-1/2	8-210-4125	1.25	.79	–	AD/B	1	7/16-20 x 15/32	8-815-130
	4	8-210-4130							

# BT Flange Tooling

BT FLANGE

## End Mill Holders BT 40 (continued)

See description and dimensional drawing on previous page.

ID D1 (in)	Gage Length L1 (in)	Part Number	Major Dia D2 (in)	Locking Screw 1 Position L2 (in)	Locking Screw 2 Position L3 (in)	Coolant Through Type	Number of Side Locking Set Screws	Socket Set Screw Size (dia-pitch x length)	Socket Set Screw Part Number
5/8	3	8-210-4150	1.50	.88	-	AD/B	1	9/16-18 x 35/64	8-815-135
	4	8-210-4155							
3/4	3	8-210-4175	1.75	.91	-	AD/B	1	5/8-18 x 1/2	8-815-140
	4	8-210-4180							
7/8	3-1/2	8-210-4200	1.88	.65	.81	AD/B	2	5/8-18 x 19/16	8-815-145
1	2	8-210-4210	2.25	.67	-	AD	1	3/4-16 x 45/64	8-815-150
	4	8-210-4215	2.36	1.12	1.00	AD/B	2		
	6	8-210-4220							
1-1/4	2	8-210-4230	2.36	1.12	1.00	AD/B	2	3/4-16 x 45/64	8-815-150
	4	8-210-4235	2.50	.83	.90				
	6	8-210-4240							
1-1/2	4-1/2	8-210-4255	2.5	.88	1.06	AD/B	2	3/4-16 x 45/64	8-815-150
	6	8-210-4265							

## Metric End Mill Holders BT 40

**NEW**

ID D1 (mm)	Gage Length L1 (mm)	Part Number	Major Dia D2 (mm)	Locking Screw 1 Position L2 (mm)	Locking Screw 2 Position L3 (mm)	Coolant Through Type	Number of Side Locking Set Screws	Socket Set Screw Size (dia-pitch x length)	Socket Set Screw Part Number
12	63	8-210-6412	42	22.5	-	AD/B	1	M12 x 1.75 x 16.5L	8-815-212
16	63	8-210-6416	48	24	-	AD/B	1	M14 x 2.0 x 16.5L	8-815-214
20	63	8-210-6420	52	25	-	AD/B	1	M16 x 2.0 x 16.5L	8-815-216
25	90	8-210-6425	65	24	25	AD/B	1	M18 x 2.0 x 20.5L	8-815-218

## End Mill Holders BT 50

**NEW**

ID D1 (in)	Gage Length L1 (in)	Part Number	Major Dia D2 (in)	Locking Screw 1 Position L2 (in)	Locking Screw 2 Position L3 (in)	Coolant Through Type	Number of Side Locking Set Screws	Socket Set Screw Size (dia-pitch x length)	Socket Set Screw Part Number
1/2	3	8-210-5125	1.25	.79	-	AD/B	1	7/16-20 x 15/32	8-815-130
5/8	3	8-210-5150	1.50	.88	-	AD/B	1	9/16-18 x 35/64	8-815-135
3/4	3	8-210-5175	1.75	.91	-	AD/B	1	5/8-18 x 1/2	8-815-140
1	4	8-210-5215	2.36	1.12	1.00	AD/B	2	3/4-16 x 45/64	8-815-150
1-1/4	4	8-210-5235	2.50	.83	.90	AD/B	2	3/4-16 x 45/64	8-815-150
1-1/2	4	8-210-5255	2.5	.88	1.06	AD/B	2	3/4-16 x 45/64	8-815-150
2	5	8-210-5275	3.75	1.36	1.30	AD/B	2	1-14 x 15/16	8-815-165

## Metric End Mill Holders BT 50

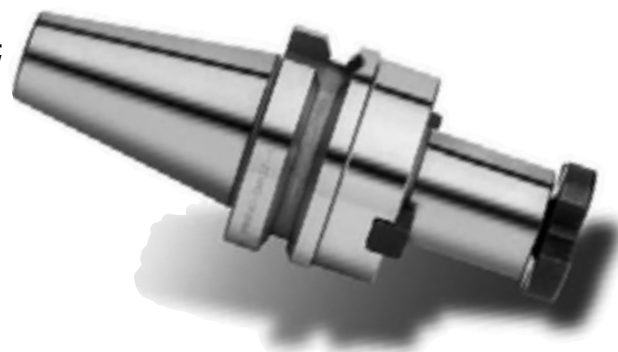
**NEW**

ID D1 (mm)	Gage Length L1 (mm)	Part Number	Major Dia D2 (mm)	Locking Screw 1 Position L2 (mm)	Locking Screw 2 Position L3 (mm)	Coolant Through Type	Number of Side Locking Set Screws	Socket Set Screw Size (dia-pitch x length)	Socket Set Screw Part Number
16	105	8-210-6516	48	2.2	-	AD/B	1	M14 x 2.0 x 16.5L	8-815-214
20	105	8-210-6520	52	23.5	-	AD/B	1	M16 x 2.0 x 16.5L	8-815-216
25	105	8-210-6525	65	21.5	24.5	AD/B	2	M18 x 2.0 x 20.5L	8-815-218
32	105	8-210-6532	72	24	28	AD/B	2	M20 x 2.0 x 20.5L	8-815-220
40	105	8-210-6540	90	32	25	AD/B	2	M20 x 2.0 x 25.5L	8-815-225



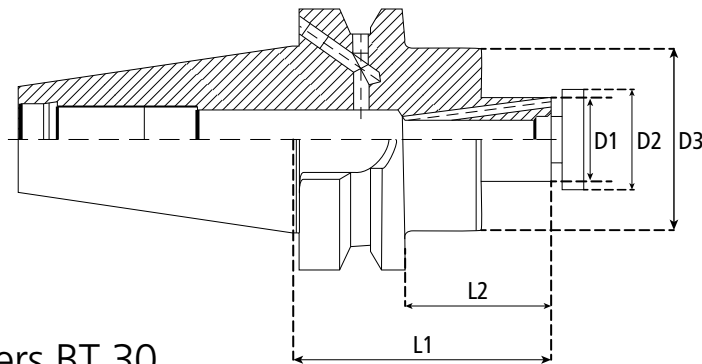
## Shell Mill/Face Mill Arbor Holders **NEW**

- Works with arbor mounted face mills
- DIN AD/B + C Coolant Specifications – allow for coolant delivery at the point of cut for indexable shell mills and face mills
- AD is coolant through the spindle; B is coolant through the flange; C is coolant through exiting at the point of cut.
- AT3 taper accuracy for excellent holder / spindle engagement
- Balance and certified to 15,000 RPM / G6.3
- QA Lab inspected for dimensional accuracy
- Machined and shot blast exterior for surface integrity
- Compatible with standard machines
- Max run out of .0002" (.005mm) TIR
- ANSI B5.50-1994



### Flange Information

Taper Size	Draw Bar Thread	Flange Screw Size	Flange Screw Part Number
30	M12 x 1.75	–	–
40	M16 x 2	M4 -0.7 x 4mm	8-815-180
50	M24 x 3	M5-0.8 x 5 mm	8-815-185



## Shell Mill/Face Mill Arbor Holders BT 30

Arbor/Pilot Diameter D2 (in)	Gage Length L1 (in)	Part Number	Head Diameter D1 (in)	Pilot Length L2 (in)	Major Diameter D3 (in)	Arbor Screw Thread	Arbor Screw Part Number	Key Width (in)	Key Part Number
0.75	1.80	8-220-3015	0.88	0.68	1.69	3/8-24	8-815-807	5/16	8-820-031
1.00	2.43	8-220-3030	1.18	0.68	2.19	3/8-24	8-815-807	5/16	8-820-031

## Shell Mill/Face Mill Arbor Holders BT 40

Arbor/Pilot Diameter D2 (in)	Gage Length L1 (in)	Part Number	Head Diameter D1 (in)	Pilot Length L2 (in)	Major Diameter D3 (in)	Arbor Screw Thread	Arbor Screw Part Number	Key Width (in)	Key Part Number
1/2	2.31	8-220-4005	0.62	0.56	1.44	1/4-28	8-815-805	1/4	8-820-025
3/4	2.43	8-220-4015	0.88	0.68	1.69	3/8-24	8-815-807	5/16	8-820-031
3/4	4.68	8-220-4020	0.88	0.68	1.69	3/8-24	8-815-807	5/16	8-820-031
3/4	6.68	8-220-4025	0.88	0.68	1.69	3/8-24	8-815-807	5/16	8-820-031
1	2.43	8-220-4030	1.18	0.68	2.19	3/8-24	8-815-807	5/16	8-820-031
1	4.68	8-220-4035	1.18	0.68	2.19	3/8-24	8-815-807	5/16	8-820-031
1	6.68	8-220-4040	1.18	0.68	2.19	1/2-20	8-815-810	3/8	8-820-037
1 1/4	2.43	8-220-4045	1.50	0.68	2.75	5/8-18	8-815-812	1/2	8-820-050
1 1/4	4.68	8-220-4050	1.50	0.68	2.75	5/8-18	8-815-812	1/2	8-820-050
1 1/2	3.19	8-220-4060	1.88	0.94	3.81	3/4-16	8-815-815	5/8	8-820-062

## Shell Mill/Face Mill Arbor Holders BT 50

See description and dimensional drawing on previous page.

Arbor/ Pilot Diameter D2 (in)	Gage Length L1 (in)	Part Number	Head Diameter D1 (in)	Pilot Length L2 (in)	Major Diameter D3 (in)	Arbor Screw Thread	Arbor Screw Part Number	Key Width (in)	Key Part Number
3/4	2.43	8-220-5015	0.88	0.68	1.69	3/8-24	8-815-807	5/16	8-820-031
1	2.43	8-220-5030	1.18	0.68	2.19	1/2-20	8-815-810	3/8	8-820-037
1	4.68	8-220-5035	1.18	0.68	2.19	1/2-20	8-815-810	3/8	8-820-037
1 1/4	2.43	8-220-5045	1.50	0.69	2.75	5/8-18	8-815-812	1/2	8-820-050
1 1/4	4.68	8-220-5050	1.50	0.68	2.75	5/8-18	8-815-812	1/2	8-820-050
1 1/2	2.94	8-220-5060	1.88	0.94	3.81	3/4-16	8-815-815	5/8	8-820-062
1 1/2	4.94	8-220-5065	1.88	0.94	3.81	3/4-16	8-815-815	5/8	8-820-062
2	2.50	8-220-5080	2.50	0.94	4.88	1-14	8-815-820	3/4	8-820-075

## Metric Shell Mill/Face Mill Arbor Holders BT 40

Arbor/ Pilot Diameter D2 (mm)	Gage Length L1 (mm)	Part Number	Head Diameter D1 mm(in)	Pilot Length L2 mm(in)	Major Diameter D3 mm(in)	Arbor Screw Thread	Arbor Screw Part Number	Key Width in	Key Part Number
16	45	8-220-6416	20(0.787)	17(0.669)	32(1.259)	M8 x 1.25	8-815-625	0.314	8-820-608
22		8-220-6422	28(1.102)	19(0.748)	40(1.575)	M10 x 1.5	8-815-630	0.393	8-820-610
27		8-220-6427	35(1.377)	21(0.826)	48(1.889)	M12 x 1.75	8-815-635	0.472	8-820-612
32		8-220-6432	42(1.653)	24(0.945)	58(2.283)	M16 x 2.0	8-815-640	0.551	8-820-614

## Jacobs Taper Holders **NEW**

- Produced according to AT3 specifications
- Retention knobs are sold separately
- Draw Bar Threads:
 

BT 30	M12 x 1.75
BT 40	M16 x 2
BT 50	M24 x 3

BT Taper Size	Jacobs Taper	Gage Length L1 (in)	Part Number
30	2	1	8-232-3002
	3		8-232-3003
	33		8-232-3033
40	2	1.75	8-232-4002
	3		8-232-4003
	4		8-232-4004
	6		8-232-4006
	33		8-232-4033
50	3	1.75	8-232-5003
	4		8-232-5004
	6		8-232-5006



For drill chucks, see page 66



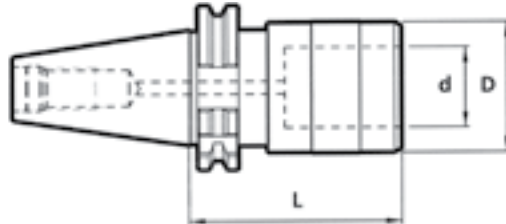
## Rigid Tap Holders

- Series Number 21,080
- Quick Change
- Compatible with BILZ System

- Through spindle coolant capability



For tapping chucks and tap adapters, see page 82



Taper Size	Part Number	L	D inches	d mm	Tap Capacity	Chuck Size	Tap Shank Dia
40	8-245-4010	2.638	1.3	19	M1.6-M14 0-9/16" 1/8" NPT	#1	0.110-0.472
	8-245-4020	3.543	1.97	31	M7-M20 5/16"-7/8" 1/8"-1/2" NPT	#2	0.236-0.866

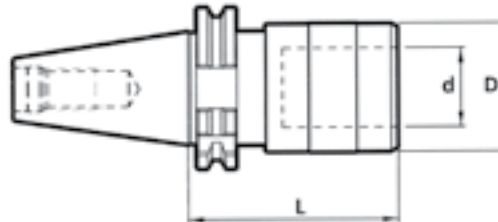
## Tension/Compression Tap Holders

- Series Number 32,000
- Quick Change
- Compatible with BILZ System

- This product does not have through spindle coolant capability



For tapping chucks and tap adapters, see page 83



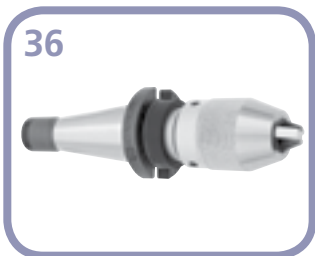
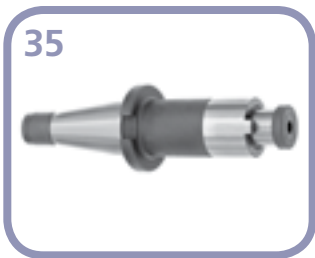
Taper Size	Part Number	L	D inches	d mm	Tap Capacity	Chuck Size	Tap Shank Dia	Tension Compression
40	8-247-4010	2.658	1.30	19	M1.6-M14 0-9/16" 1/8" NPT	#1	0.110-0.472	0.3543
	8-247-4020	3.543	1.97	31	M7-M20 5/16"-7/8" 1/8"-1/2" NPT	#2	0.236-0.866	0.5906
	8-247-4030	4.606	2.83	48	M12-M33 9/16"-1-3/8" 3/4"-1" NPT	#3	0.354-1.417	0.9449



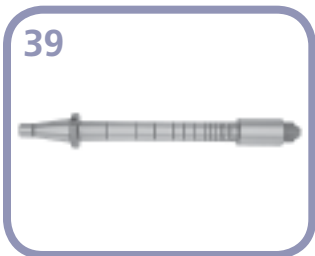
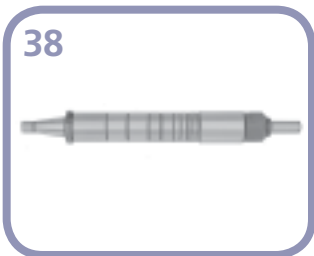
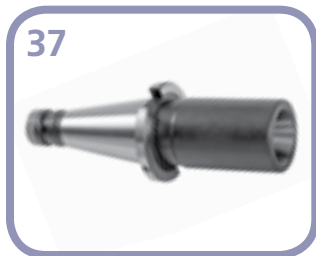
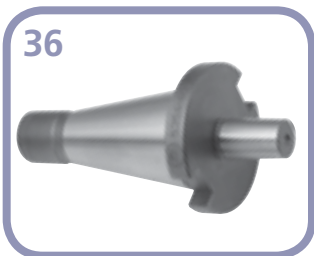




## CONTENTS



- 32 ER Collet Chucks
- 32 TG Collet Chucks
- 33 DA180 Collet Chucks
- 34 End Mill Holders
- 35 Shell Mill Holders
- 35 Shell Mill Holders with 4" Extension
- 36 Face Mill Holders
- 36 Integral Drill Chucks
- 36 Jacobs Taper Adapters
- 37 Morse Taper Adapters
- 37 R8 Adapters
- 37 Reducer NMTB 50 to 40
- 38 Style A Milling Machine Arbors
- 39 Style B Milling Machine Arbors



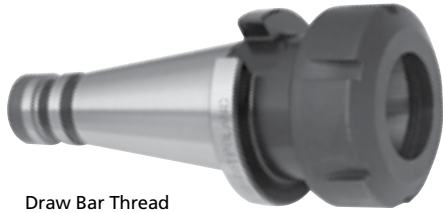


# NMTB/NST Flange Tooling

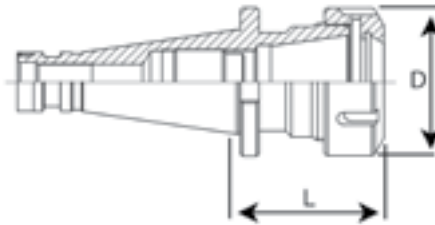
Tooling Systems

## ER Collet Chucks

**MADE IN POLAND**



Draw Bar Thread  
 #30 1/2" - 13  
 #40 5/8" - 11  
 #50 1" - 8



Supplier Model # 7616

ER 16

ER 25 - 40



Collect Chuck sets available on page 68



For ER collets, see page 70

Shank Size	Collet Type	Gage Length L (in)	Part Number	Major Dia D (in)	Shank Type	Nut Part Number	Wrench Part Number
30	ER 16	2	8-300-3016	1.26	NMTB and NST	8-800-016	8-810-016
	ER 32	2-1/2	8-300-3032	1.97	NMTB and NST	8-800-032	8-810-032
	ER 40	3-1/2	8-300-3040	2.48	NMTB and NST	8-800-040	8-810-040
40	ER 16	2-1/2	8-300-4016	1.26	NMTB and NST	8-800-016	8-810-016
	ER 25	2-1/2	8-300-4025	1.65	NMTB and NST	8-800-025	8-810-025
	ER 32	3	8-300-4032	1.97	NMTB and NST	8-800-032	8-810-032
	ER 40	2-1/2	8-300-4040	2.48	NMTB and NST	8-800-040	8-810-040
50	ER 40	2-3/4	8-300-5040	2.48	NMTB and NST	8-800-040	8-810-040

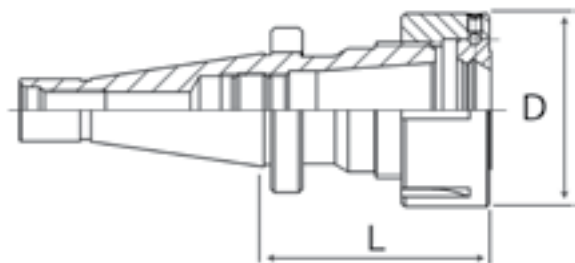
NMTB/NST FLANGE

## TG Collet Chucks

**MADE IN POLAND**



Draw Bar Thread  
 #30 1/2" - 13  
 #40 5/8" - 11  
 #50 1" - 8



For TG Precision Collets, see page 74



Supplier Model #7640

Shank Size	Size	Gage Length L (in)	Part Number	Major Dia D (in)	Nut Part Number	Wrench Part Number
30	TG75	2-1/2	8-302-3075	2-1/8	8-800-2005	8-810-P932
40	TG75	2-1/2	8-302-4075	2-1/8	8-800-2005	8-810-P932
	TG100	3	8-302-4100	2-1/2	8-800-2010	8-810-2010
50	TG100	3-1/2	8-302-5100	2-1/2	8-800-2010	8-810-2010

# NMTB/NST Flange Tooling



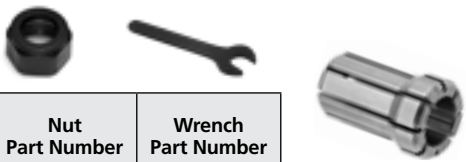
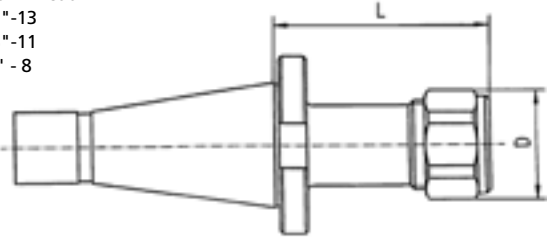
Tooling Systems

## DA180 Collet Chucks

**MADE IN POLAND**



Draw Bar Thread  
 #30 1/2"-13  
 #40 5/8"-11  
 #50 1" - 8



Supplier Model # 7665

Taper Size	Collet Type	Gage Length L (in)	Part Number	Clamping Range	Major Dia D (in)	Nut Part Number	Wrench Part Number
30	DA180	3	8-302-0318	1/4" -3/4"	1.54	8-800-1018	8-810-1018
40		3	8-302-0418				
50		3-1/2	8-302-0518				

For DA Precision Collets, see page 76

NMTB/NST FLANGE



# NMTB/NST Flange Tooling

Tooling Systems

## End Mill Holders

- Made of Alloy Forged Steel for a long durable service life
- Hardened to RC 56-60 and ground to ensure maximum accuracy
- Shell end mill pilot T.I.R. < 0.0004"
- Produced according to AT3 specifications
- Draw bar threads:
  - 30 1/2" - 13
  - 40 5/8" - 11
  - 50 1" - 8
- Compatible with Ericson quick change



Supplier Model # 7620

NST/NMTB Taper	Hole Dia (in)	Gage Length L (in)	Holder Part Number	Set Part Number	Set Screw Thread	Set Screw Part Number
30	3/16	2	8-310-005Q	-	10-32 x 5/16	8-815-110
	1/4	2	8-310-007Q		1/4-28 x 1/4	8-815-115
	3/8*	2	8-310-010Q*		3/8-24 x 5/16	8-815-122
	1/2*	2	8-310-015Q*		7/16-20 x 25/64	8-815-131
	5/8*	2-1/2	8-310-020Q*		9/16-18 x 15/32	8-815-133
	3/4*	2-1/2	8-310-025Q*		5/8-18 x 1/2	8-815-140
40	3/16	2	8-310-030Q	8-310-400Q 9 Pc Set **not included	10-32 x 5/16	8-815-110
	1/4**	2	8-310-032Q**		1/4-28 x 1/4	8-815-115
	3/8	2	8-310-035Q		3/8-24 x 5/16	8-815-122
	1/2*	2	8-310-040Q*	8-310-409Q 10 Pc Set	7/16-20 x 25/64	8-815-131
	5/8*	2-1/2	8-310-045Q*		9/16-18 x 15/32	8-815-133
	3/4*	2-1/2	8-310-050Q*		5/8-18 x 1/2	8-815-140
	7/8*	3-1/2	8-310-055Q*		5/8-18 x 1/2	8-815-140
	1*	3-1/2	8-310-060Q*		3/4-16 x 19/32	8-815-147
	1-1/4*	4	8-310-065Q*		3/4-16 x 19/32	8-815-147
1-1/2*	4	8-310-070Q*	3/4-16 x 19/32	8-815-147		
50	3/16	2-3/4	8-310-073Q	8-310-510Q 10 Pc Set	10-32 x 5/16	8-815-110
	3/8	2-3/4	8-310-075Q		3/8-24 x 5/16	8-815-122
	1/2	2-3/4	8-310-080Q		7/16-20 x 25/64	8-815-131
	5/8	2-3/4	8-310-085Q		9/16-18 x 15/32	8-815-133
	3/4	2-7/8	8-310-090Q		5/8-18 x 1/2	8-815-140
	7/8*	2-7/8	8-310-095Q*		5/8-18 x 1/2	8-815-140
	1*	3-1/2	8-310-100Q*		3/4-16 x 19/32	8-815-147
	1-1/4*	3-1/2	8-310-105Q*		3/4-16 x 19/32	8-815-147
	1-1/2*	4	8-310-110Q*		3/4-16 x 19/32	8-815-147
	2*	4-11/16	8-310-115Q*		1-14 x 7/8	8-815-165

\*Holders are only for single end mills

NMTB/NST FLANGE

# NMTB/NST Flange Tooling



Tooling Systems

## Shell Mill Holders

**MADE IN POLAND**

- Made of Alloy Forged Steel for a long durable service life
- Hardened to RC 56-60 and ground to ensure maximum accuracy
- Shell mill pilot T.I.R. <0.0004"
- Compatible with Ericson quick change



Supplier Model # 7311

NST/NMTB Shank	Arbor Dia (in)	Gage Length (in)	Part Number	Head Length (in)	Key Width (in)	Key Part Number
30	1/2	2	8-320-005Q	.689	1/4	8-820-P025
	3/4		8-320-010Q		5/16	8-820-P031
	1		8-320-015Q	.929	3/8	8-820-P037
	1-1/4		8-320-020Q		1/2	8-820-P050
40	3/4	2	8-320-030Q	.689	5/16	8-820-P031
	1		8-320-035Q		3/8	8-820-P037
	1-1/4		8-320-040Q	.937	1/2	8-820-P050
	1-1/2		8-320-045Q		5/8	8-820-P062
	2	8-320-050Q	3.44		8-820-P075	
50	3/4	1-1/4	8-320-060Q	.752	5/16	8-820-P031
	1	1-7/8	8-320-065Q		3/8	8-820-P037
	1-1/4		8-320-070Q	1.000	1/2	8-820-P050
	1-1/2		8-320-075Q		5/8	8-820-P062
	2		8-320-080Q		7.4	8-820-P075

Draw Bar Thread  
 #30 1/2"-13  
 #40 5/8"-11  
 #50 1" - 8

NMTB/NST FLANGE

## Shell Mill Holders with 4" Extension

**MADE IN POLAND**

- Draw bar threads:  
 NST/NMTB 40 5/8" - 11  
 NST/NMTB 50 1" - 8
- Compatible with Ericson quick change



Supplier Model # 7311

NST/NMTB Shank	Arbor Dia (in)	Gage Length (in)	Part Number	Key Width (in)	Key Part Number
40	3/4	4	8-320-032Q	5/16	8-820-P031
	1		8-320-037Q	3/8	8-820-P037
50	1		8-320-067Q	3/8	8-820-P037
	1-1/4		8-320-072Q	1/2	8-820-P050
	1-1/2		8-320-077Q	5/8	8-820-P062

## Face Mill Holders

- NST Taper is produced according to AT3 specifications
- Made of Alloy Forged Steel for a long durable service life
- Holders have four mounting holes with the thread 5/8-11 on a 4" bolt circle to hold 8" or larger face milling cutters
- Shell mill pilot T.I.R. <0.0004"
- Holders have 1" drive keys

Supplier Model # 7349

Shank	Arbor Dia (in)	Part Number	Arbor Length (in)
NST/NMTB 40	2	8-322-4020	6.20
	2-1/2	8-322-5020	
NST/NMTB 50	2	8-322-4025	7.56
	2-1/2	8-322-5025	

**MADE IN POLAND**



Draw Bar Thread  
#40 5/8"-11  
#50 1" - 8

NMTB/NST FLANGE

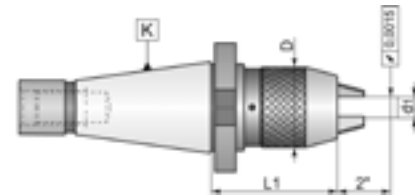
## Integral Drill Chucks

- Draw bar threads: NMTB/NST 40 5/8" - 11
- Compatible with Ericson quick change

Supplier Model # 7657

Taper Size K	Chuck Capacity d1 (in)	Gage Length L1 (in)	Part Number	Major Dia D (in)	Wrench Part Number
40	1/32 - 1/2	3.46	8-330-420Q	2	8-810-932K
	1/8 - 5/8	3.90	8-330-430Q	2-1/4	

**MADE IN POLAND**



## Jacobs Taper Adapters

- Compatible with Ericson quick change

Supplier Model # 5370

Taper Size K	Jacobs Taper	Part Number	Gage Length L (in)
30	JT3	8-332-033Q	1.5
	JT33	8-332-0333Q	
	JT6	8-332-036Q	
40	JT1	8-332-041Q	1.5
	JT2	8-332-042Q	
	JT3	8-332-043Q	
	JT33	8-332-0433Q	
	JT6	8-332-046Q	
50	JT3	8-332-053Q	2
	JT4	8-332-054Q	
	JT5	8-332-055Q	

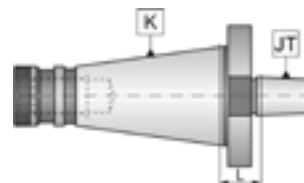
**MADE IN POLAND**



Draw Bar Thread  
#30 1/2"-13  
#40 5/8"-11  
#50 1" - 8



For drill chucks, see page 66



## Morse Taper Adapters

- Compatible with Ericson quick change

Supplier Model # 1657

NST/ NMTB Shank*	MT Socket	Part Number	Gage Length (in)	Draw Bar Thread
40	2	8-336-005Q	1.969	5/8-11
	3	8-336-010Q	2.559	
	4	8-336-015Q	3.740	
	5	8-336-020*	6.693	
50	2	8-336-024Q	0.906	1-8
	3	8-336-025Q	1.299	
	4	8-336-030Q	2.087	
	5	8-336-035Q	3.386	

\*8-336-020 is NST 40 only

MADE IN  
POLAND



## R8 Adapters

- Adapters are provided with the screw (inside) to hold tools with 7/16-20 R8 shank.
- To hold adapter in the spindle, use draw bar with standard thread.

Supplier Model # 1640

NST/ NMTB Shank	Part Number	Gage Length (in)	Draw Bar Thread
40	8-336-805Q	3.41	5/8-11
50	8-336-810Q	2.685	1-8

MADE IN  
POLAND



## Reducer NMTB 50 to 40

- Shanks are produced according to AT3 specifications
- Made of Alloy Forged Steel for a long durable service life
- Taper seat T.I.R. <0.0004"
- Hardened to RC 56-60 and ground to ensure maximum accuracy

Supplier Model # 1650

NST Shank	NST Socket	Part Number
50	40	8-336-5040

MADE IN  
POLAND







# NMTB/NST Flange Tooling

Tooling Systems

## Milling Machine Arbors

- Milling machine arbors are made of top quality one piece forgings
- Carefully heat treated and ground surfaces with extremely narrow tolerances assure a rigid setup and accurate machining operations
- All external threads are ground
- Arbors are equipped with assorted width of solid spacers and the necessary running bushings with standard keyways and threaded arbor nut
- Style "A" arbors are provided with 23/32 x 1-3/4" end pilots



Nuts on page 91



Bushings on page 92

## Style A Milling Machine Arbors

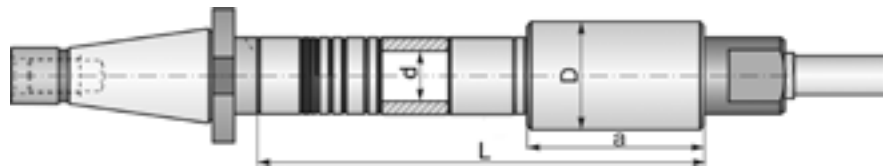
**MADE IN POLAND**

- Draw Bar Threads:  
 #30 1/2" - 13  
 #40 5/8" - 11  
 #50 1" - 8



Style "A"

These arbors have a right-hand thread



Supplier Model # 7170

Taper Size	Part Number	Arbor Number	Arbor Dia d (in)	Length L (in)	Running Bushing D x a	Number of Bushings
30	8-360-A005	30-7/8 - A10-2	7/8	10	1-5/8 x 2-5/8	1
	8-360-A010	31 - A10-2	1			
	8-360-A015	31-1/4 - A10-2	1-1/4		1-7/8 x 3-1/8	
	8-360-A017	31-1/4 - A10-3				
40	8-360-A027	41 - A8	1	8	-	-
	8-360-A028	41 - A10		10	-	-
	8-360-A030	41 - A12		12	-	-
	8-360-A035	41 - A16-3		16	1-7/8 x 3-1/8	1
	8-360-A037	41-1/4 - A8	1-1/4	8	-	-
	8-360-A038	41-1/4 - A10		10	-	-
	8-360-A040	41-1/4 - A12		12	-	-
	8-360-A045	41-1/4 - A16-3		16	1-7/8 x 3-1/8	1
50	8-360-A055	50-7/8 - A18-4	7/8	18	2-1/8 x 3-3/4	1
	8-360-A057	51 - A8	1	8	-	-
	8-360-A060	51 - A12		12	-	-
	8-360-A065	51 - A18-4	1-1/4	18	2-1/8 x 3-3/4	1
	8-360-A070	51-1/4 - A12		12	-	-
	8-360-A075	51-1/4-A18-4	18	2-1/8 x 3-3/4	1	

NMTB/NST FLANGE

# NMTB/NST Flange Tooling



Tooling Systems

## Style B Milling Machine Arbors

- Draw Bar Threads:
  - #30 1/2" - 13
  - #40 5/8" - 11
  - #50 1" - 8

**MADE IN POLAND**



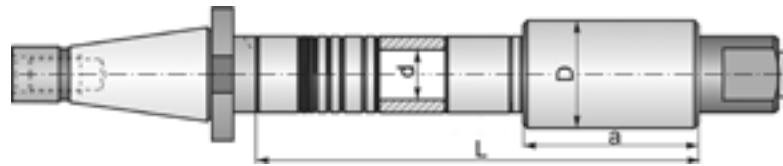
Nuts on page 91



Bushings on page 92



Style "B"



Supplier Model # 7170

Taper Size	Part Number	Arbor Number	Arbor Dia d (in)	Length L (in)	Running Bushing D x a	Number of Bushings
30	8-360-B002	31 - B2	1	2	-	-
40	8-360-B005	40-7/8 - B14-3	7/8	14	1-7/8 x 3-1/8	1
	8-360-B006	40-7/8 - B16-3		16		
	8-360-B008	41 - B3	1	3	-	-
	8-360-B010	41 - B14-3		14	1-7/8 x 3-1/8	1
	8-360-B015	41 - B20-3		20		
	8-360-B017	41-1/4 - B3	1-1/4	3	-	-
	8-360-B020	41-1/4 - B14-3	1-1/4	14	1-7/8 x 3-1/8	1
	8-360-B025	41-1/4 - B20-3	1-1/4	20		
8-360-B030	41-1/2 - B20-4	1-1/2	20	2-1/8 x 3-3/4	-	
50	8-360-B033	51 - B3-1/2	1	3-1/2	-	-
	8-360-B035	51 - B15-4		15	2-1/8 x 3-3/4	1
	8-360-B040	51 - B18-4		18		2
	8-360-B045	51 - B24-4		24		
	8-360-B047	51-1/4 - B3-1/2	1-1/4	3-1/2	-	-
	8-360-B050	51-1/4 - B15-4		15	2-1/8 x 3-3/4	1
	8-360-B055	51-1/4 - B18-4		18		2
	8-360-B060	51-1/4 - B24-4		24		
	8-360-B065	51-1/4 - B30-4	30			
	8-360-B067	51-1/2 - B3-1/2	1-1/2	3-1/2	-	-
	8-360-B070	51-1/2 - B18-4		18	2-1/8 x 3-3/4	2
	8-360-B075	51-1/2 - B24-5		24		
	8-360-B080	51-1/2 - B30-5		30		
	8-360-B090	52 - B24-5	2	24	2-3/4 x 4-1/4	
	8-360-B095	52 - B30-5		30		
	8-360-B100	52 - B36-5		36		
8-360-B105	52-1/2 - B36-6	2-1/2		36		3-3/8 x 4-1/4

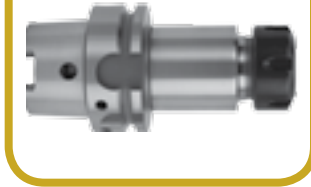
NMTB/NST FLANGE





## CONTENTS

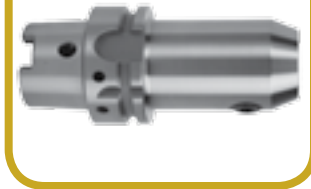
42



42 HSK 63A ER Collet Chucks

42 HSK 63A End Mill Holders

42



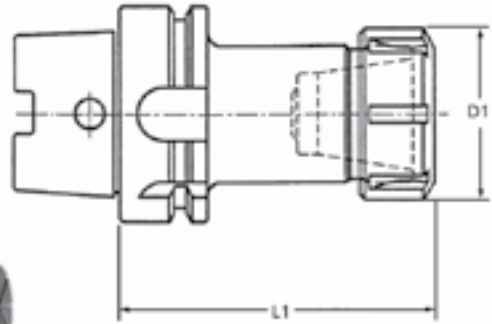
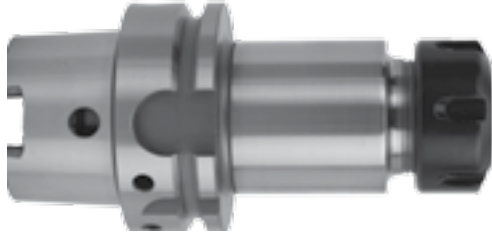


# HSK Flange Tooling

Tooling Systems

## HSK 63A ER Collet Chucks **NEW**

- Balanced to 25,000 RPM/G2.5
- Allows for coolant through the spindle with coolant feeding tube, part number 8-890-063 (sold separately)



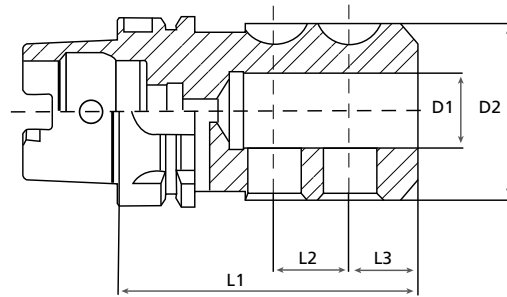
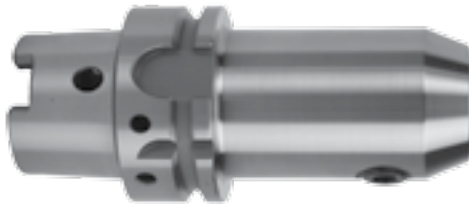
For ER collets, see page 70

Collet Type	Gage Length L1 (in)	Part Number	Clamping Range (in)	Nut Style*	Nut Thread	Nut OD D1	Nut Part Number	Wrench Part Number	Adjusting Screw Size	Adjusting Screw Part Number
ER16	3.15	8-400-1603	1/32–13/32	H	M22 x 1.5	28 mm (1.1in)	8-800-016	8-810-016	7/16-16 x 1/2"	8-815-016
ER20	3.15	8-400-2003	1/16–1/2	H	M25 x 1.5	34 mm (1.34in)	8-800-020	8-810-020	9/16-16 x 1/2"	8-815-020
ER25	3.15	8-400-2503	1/16–5/8	S	M32 x 1.5	42 mm (1.65in)	8-800-025	8-810-025	11/16-16 x 1/2"	8-815-025
ER32	4.00	8-400-3204	3/32–3/4	S	M40 x 1.5	50 mm (1.97in)	8-800-032	8-810-032	7/8-16 x 1/2"	8-815-032
ER40	4.00	8-400-4004	1/8–1	S	M50 x 1.5	63 mm (2.48in)	8-800-040	8-810-040	1-1/8-16 x 1/2"	8-815-040

\*H = Hex Nut, S = Slotted Round Nut

## HSK 63A End Mill Holders **NEW**

- Balanced to 25,000 RPM/G2.5
- Allows for coolant through the spindle with coolant feeding tube, part number 8-890-063 (sold separately)



HSK FLANGE

D1 ID (in)	Gage Length L1 (in)	Part Number	Major Diameter D2 (in)	Locking Screw 1 Position L2 (in)	Locking Screw 2 Position L3 (in)	Number of side locking set screws	Socket Set Screw Size (dia-pitch x length)	Socket Set Screw Part Number
3/8	3.5	8-410-0373	1	.75	–	1	3/8-24 x 25/64	8-815-125
1/2	3.5	8-410-0503	1-1/4	.79	–	1	7/16-20 x 15/32	8-815-130
5/8	3.75	8-410-0623	1-1/2	.88	–	1	9/16-18 x 35/64	8-815-135
3/4	3.75	8-410-0753	1-3/4	.91	–	1	5/8-18 x 1/2	8-815-140
1	4.0	8-410-1004	2.36	1.00	.92	2	3/4-16 x 1/2	8-815-150
1-1/4	4.5	8-410-1254	2-1/2	.90	.83	2	3/4-16 x 45/64	8-815-150



## CONTENTS



- 44 ER Collet Chucks
- 44 TG Collet Chucks
- 45 DA180 Collet Chucks
- 45 End Mill Holders
- 46 Shell Mill Arbors
- 46 Jacobs Taper Adapters
- 46 R8 Shank to MT Socket Adapters
- 47 Stub Milling Arbors
- 47 Precision Slitting Arbor
- 47 Annular Cutter Holders



# R8 Shank Tooling

Tooling Systems

## ER Collet Chucks

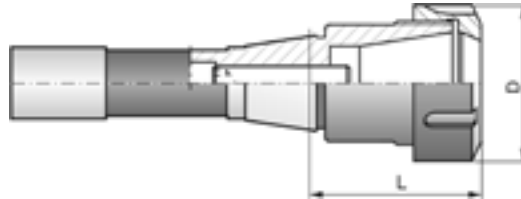
**MADE IN POLAND**

- Draw Bar Thread 7/16" -20
- ER 16: Hex Nut
- ER 20, ER 25, ER32 and ER 40: Round Nut



R8 ER Collet Chuck sets available on page 69

For ER collets, see page 70



Supplier Model #7814

Collet Type	Shank Size	Gage Length L (in)	Part Number	Major Dia D (in)	Nut Part Number	Wrench Part Number
ER 16	R8	1.49	8-500-1608	1.26	8-800-P816	8-810-P916
ER 20		1.77	8-500-2008	1.38	8-800-P820	8-810-P920
ER 25		1.97	8-500-2508	1.65	8-800-P825	8-810-P925
ER 32		2.28	8-500-3008	1.97	8-800-P832	8-810-P9032
ER 40		2.36	8-500-4008	2.48	8-800-P840	8-810-P940

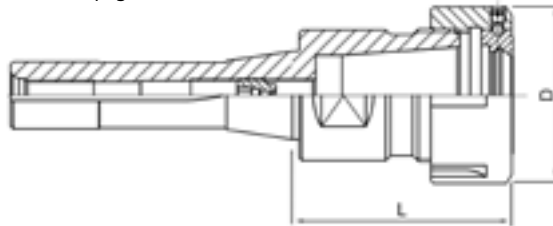
## TG Collet Chucks

**MADE IN POLAND**

- Draw Bar Thread 7/16" -20



For TG Precision Collets, see page 75



Supplier Model #7819

Shank Size	Size	Gage Length L (in)	Part Number	Major Dia D (in)	Nut Part Number	Wrench Part Number
R8	TG100	3-1/8	8-500-1100	2-1/2	8-800-2010	8-810-2010



R8 SHANK



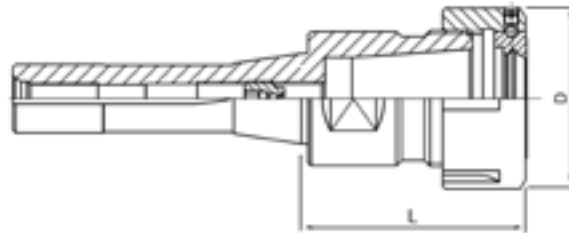
## DA180 Collet Chucks

**MADE IN POLAND**

- Draw Bar Thread 7/16" -20



For DA Precision Collets, see page 76



Supplier Model #7816

Shank Size	Collet Type	Gage Length L (in)	Part Number	Major Dia D (in)	Nut Part Number	Wrench Part Number
R8	DA180	2.78	8-500-0200	1.54	8-800-1018	8-810-1018

## End Mill Holders

**MADE IN POLAND**

- Made of Alloy Forged Steel for a long durable service life
- Hardened to RC 56-60 and ground to ensure maximum accuracy
- Shell End Mill Pilot T.I.R. < 0.0004"
- Each set is provided with a wooden case
- Draw bar thread: 7/16" -20



Supplier Model # 7820

Hole Dia	Shank	Gage Length (in)	Holder Part Number	Set Part Number	Set Screw Thread	Set Screw Part Number
3/16	R8	1.30	8-510-0005	8-510-0105 5 Pc Set 3/16-3/4*	10-32 x 5/16	8-815-110
1/4*		1.30	8-510-0007		1/4-28 x 1/4	8-815-115
3/8		1.30	8-510-0010		3/8-24 x 5/16	8-815-122
1/2		1.30	8-510-0015		7/16-20 x 25/64	8-815-131
5/8		1.50	8-510-0020		9/16-18 x 15/32	8-815-133
3/4		2.36	8-510-0025	5/8-18 x 1/2	8-815-140	
7/8		2.74	8-510-0030	5/8-18 x 1/2	8-815-140	
1		3.23	8-510-0035	8-510-0108 8 Pc Set 3/16-1-1/4*	3/4-16 x 19/32	8-815-147
1-1/4		3.23	8-510-0040		3/4-16 x 19/32	8-815-147
1-1/2		3.74	8-510-0045		3/4-16 x 19/32	8-815-147
					3/4-16 x 19/32	8-815-147



8 Piece Holder Set

\*1/4 not included in sets

**R8 SHANK**





# R8 Shank Tooling

Tooling Systems

## Shell Mill Arbors

**MADE IN POLAND**

- Made of Alloy Forged Steel for a long durable service life
- Hardened to RC 56-60 and ground to ensure maximum accuracy
- Shell end mill pilot T.I.R. <0.0004"
- Draw bar threads: 7/16" - 20



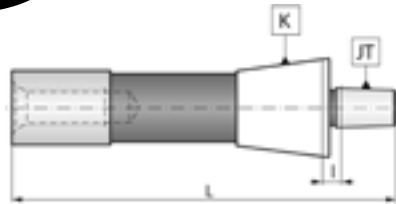
Supplier Model # 7550

Arbor Dia	Shank	Gage Length (in)	Arbor Part Number	Thread Size	Arbor Screw Part Number	Arbor Key Width (in)	Arbor Key Part Number
1/2	R8	1.02	8-520-0005	1/4 - 28	8-815-P805	1/4	8-820-P025
3/4			8-520-0010	3/8 - 24	8-815-P807	5/16	8-820-P031
1		.95	8-520-0015	1/2 - 20	8-815-P810	3/8	8-820-P037
1-1/4			8-520-0020	5/8 - 18	8-815-P812	1/2	8-820-P050
1-1/2			8-520-0025	3/4 - 16	8-815-P815	5/8	8-820-P062

## Jacobs Taper Adapters

**MADE IN POLAND**

- Draw bar threads: 7/16" - 20



Supplier Model # 5355

Taper Size K	Jacobs Taper JT	Part Number	OAL L (in)	Clearance Length (in)
R8	JT1	8-530-0001	5.00	0.27
	JT2	8-530-0002	5.18	0.25
	JT3	8-530-0003	5.57	0.30
	JT4	8-530-0004	5.95	0.23
	JT6	8-530-0005	5.27	0.22
	JT33	8-530-0033	5.35	0.30

R8 SHANK

## R8 Shank to MT Socket Adapters

**MADE IN POLAND**

Supplier Model # 1855

Shank	MT Socket	Part Number	Draw Bar Thread
R8	2	8-530-0050	7/16 - 20
	3	8-530-0100	

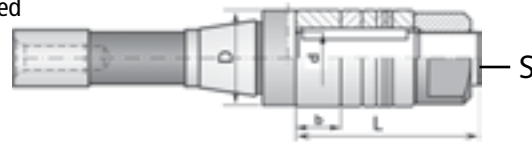




## Stub Milling Arbors

**MADE IN POLAND**

- Made of Alloy Forged Steel for long durable service life
- Hardened to RC 56-60 and ground to ensure maximum accuracy
- Face is held perpendicular to center line within 0.0004"
- Pilot diameter is sized for precision fit with cutter and is keyed for positive drive
- Heavy duty locking LH nut and set of arbor spacers are included
- Draw Bar Thread 7/16" x 20



Spacers available on page 92

Supplier Model # 7560

Shank Dia	Arbor Dia (in)	Part Number	Major Dia D (in)	Wrench Size S	Arbor Length L (in)	Nut Part Number
R8	1	8-560-0005	1.50	1.25	3.5	8-800-610R
R8	1-1/4	8-560-0010	1.75	1.50		8-800-615R

## Precision Slitting Arbor

- This versatile arbor offers flexibility in sawing operations
- The spring loaded mechanism accepts saw blades with hole diameters from 1/2" to 1"
- Saw blades are firmly secured in position with a hex socket screw
- Rust resistant black oxide finish
- Arbors are provided with one hex wrench and one screw



Shank Dia D	Part Number	OAL	Hole Dia	Head Dia	Screw Part Number	Hex Key Part Number
R8	8-560-1005	5-3/32	1/2, 5/8, 3/4, 7/8, 1	1.24	8-815-P900	6-998-162

Please refer to our 2015 TMX Cutting Tools Catalog or [www.tmxtools.com](http://www.tmxtools.com) for a full selection of TMX Slitting Saws.

## Annular Cutter Holders

**MADE IN POLAND**

- R8 shank
- Holder shank allows different machines to drive cutter
- Easily reaches out of the way places
- Select adapter lengths reduce the number of machine set ups



Type	Shank Size	Cutter Shank Size (in)	Gage Length (in)	Part Number	Replacement Spring Part Number
HEN-5	R8	3/4	1-3/4	8-560-0500	8-890-900H



Please refer to our 2015 TMX Cutting Tools Catalog or [www.tmxtools.com](http://www.tmxtools.com) for a full selection of TMX Annular Cutters.





## CONTENTS



- 50 ER Collet Chucks
- 50 Shell Mill Holders with Tanged Arbors
- 51 End Mill Holders
- 52 Face Mill Holders
- 52 Shell Reamer Arbors
- 53 Taper Sleeves
- 54 Annular Cutter Holders
- 54 Morse Taper to Threaded Mount
- 55 Precision Drill Chuck Arbors (MT to JT Adapters)



# Morse Taper Tooling

Tooling Systems

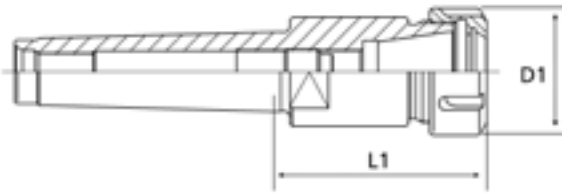
MORSE TAPER

## ER Collet Chucks

**MADE IN  
POLAND**



Draw Bar Thread MT3 3/8"-16



MT3 ER Collet Chuck Set  
available on page 69



For ER collets, see page 70

Supplier Model # 7711

Collet Type	Shank Size	Gage Length L1 (in)	Part Number	Major Dia D1 (in)	Nut Part Number	Wrench Part Number
ER 32	MT 3	2.894	8-501-3203	1.97	8-800-P832	8-810-P9032

## Shell Mill Holders with Tanged Arbors

**MADE IN  
POLAND**

- Made of alloy forged steel for a long durable service life
- Hardened to RC 56-60 and ground to ensure maximum accuracy
- Shell end mill pilot T.I.R. <0.0004"



Supplier Model # 7411

MT Shank	Arbor Dia (in)	Style "A" Part Number	Gage Length (in)	Thread Size	Arbor Screw Part Number	Key Width (in)	Key Part Number
4	3/4	8-521-0010	1.122	3/8 - 24	8-815-P807	5/16	8-820-P031
	1	8-521-0015		1/2 - 20	8-815-P810	3/8	8-820-P037
	1-1/4	8-521-0020		5/8 - 18	8-815-P812	1/2	8-820-P050
	1-1/2	8-521-0025		3/4 - 16	8-815-P815	5/8	8-820-P062
5	1	8-521-0030	1.201	1/2 - 20	8-815-P810	3/8	8-820-P037
	1-1/4	8-521-0035		5/8 - 18	8-815-P812	1/2	8-820-P050
	1-1/2	8-521-0040		3/4 - 16	8-815-P815	5/8	8-820-P062



## End Mill Holders

**MADE IN  
POLAND**

- Made of Alloy Forged Steel for a long durable service life
- Hardened to RC 56-60 and ground to ensure maximum accuracy
- .0002" TIR or better to ensure minimal run-out
- 7/8" holders and larger are provided with two set screws

Draw Bar Threads:  
 MT2 3/8" - 16  
 MT3 3/8" - 16  
 MT4 1/2" - 13  
 MT5 5/8" - 11

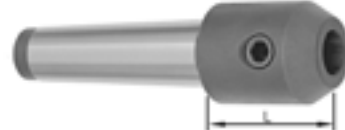
MORSE TAPER

Style "A" Tanged



Supplier Model # 7720

Style "B" Draw Bar



Supplier Model # 7721

MT Shank	Hole Dia	Style "A" Part Number	Style "B" Part Number	Gage Length L	Thread	Set Screw Part Number
2	3/16	-	8-511-1005	2.008	10-32 x 5/16	8-815-110
	1/4	-	8-511-1007	2.008	1/4-28 x 1/4	8-815-110
	3/8	8-511-0010	8-511-1010	2.008	3/8-24 x 5/16	8-815-122
	1/2	8-511-0015	8-511-1015	3.465	7/16-20 x 25/64	8-815-131
	5/8**	8-511-0020	8-511-1020	2.717	9/16-18 x 15/32	8-815-133
3	3/16	-	8-511-1025	2.008	10-32 x 5/16	8-815-110
	1/4	-	8-511-1027	2.008	1/4-28 x 1/4	8-815-115
	3/8	8-511-0030	8-511-1030	2.008	3/8-24 x 5/16	8-815-122
	1/2	8-511-0035	8-511-1035	2.126	7/16-20 x 25/64	8-815-131
	5/8	8-511-0040	8-511-1040	3.976	9/16-18 x 15/32	8-815-133
	3/4**	8-511-0045	8-511-1045	2.835	5/8-18 x 1/2	8-815-140
4	3/8	8-511-0050	8-511-1050	2.067	3/8-24 x 5/16	8-815-122
	1/2	8-511-0055	8-511-1055	2.185	7/16-20 x 25/64	8-815-131
	5/8	8-511-0060	8-511-1060	2.264	9/16-18 x 15/32	8-815-133
	3/4	8-511-0065	8-511-1065	2.420	5/8-18 x 1/2	8-815-140
	7/8	8-511-0070	-	2.500	5/8-18 x 1/2	8-815-140
	1**	8-511-0075	8-511-1075	3.169	3/4-16 x 19/32	8-815-147
5	3/8	8-511-0080	-	2.067	3/8-24 x 5/16	8-815-122
	1/2	8-511-0085	-	2.185	7/16-20 x 25/64	8-815-131
	5/8	8-511-0090	-	2.264	9/16-18 x 15/32	8-815-133
	3/4	8-511-0095	-	2.500	5/8-18 x 1/2	8-815-140
	7/8	8-511-0100	-	2.420	5/8-18 x 1/2	8-815-140
	1	8-511-0105	8-511-1105	2.736	3/4-16 x 19/32	8-815-147
	1-1/4**	8-511-0110	8-511-1110	2.815	3/4-16 x 19/32	8-815-147
	1-1/2**	8-511-0115	8-511-1115	3.500	3/4-16 x 19/32	8-815-147
	2*	8-511-0120	-	-	1-14 x 53/64	8-815-165

\*\* Holders are only for single end mills



# Morse Taper Tooling

Tooling Systems

MORSE TAPER

## Face Mill Holders

MADE IN POLAND

- MT Taper is produced according to AT3 specifications
- Made of Alloy Forged Steel for a long durable service life
- Holders have four mounting holes with the thread 5/8-11 on a 4" bolt circle to hold 8" or larger face milling cutters
- Shell end mill pilot T.I.R. <0.0004"
- Holders have 1" drive keys



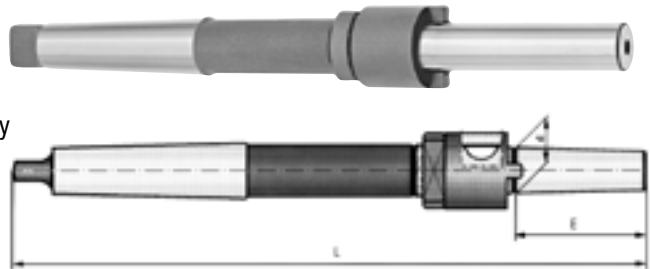
Supplier Model # 2842

Shank	Arbor Dia (in)	Part Number	OAL (in)
MT 5	2	8-522-5020	9.57
	2-1/2	8-522-6020	
MT 6	2	8-522-5025	13.58
	2-1/2	8-522-6025	

## Shell Reamer Arbors

MADE IN POLAND

- Easy eject
- Made of Alloy Forged Steel for a long durable service life
- Hardened to RC 56-60 and ground to ensure maximum accuracy
- Arbors are provided with an ejecting nut, collar, and key
- T.I.R. < 0.0004"



Supplier Model # 5310

Taper Number	Size Number	Arbor Dia d (in)	Fits Shell Reamer	Part Number	Taper Length E (in)	OAL L (in)	Wrench Size	Eject Collar Part Number	Arbor Key Part Number
2	4	3/8	21/32 to 25/32	8-521-1004	2-1/4	9	19/32	8-890-9004	8-820-8004
	5	1/2	13/16 to 1-1/32	8-521-1005	2-1/2	9-1/2	25/32	8-890-9005	
3	6	5/8	1-1/16 to 1-9/32	8-521-1006	2-3/4	10	7/8	8-890-9006	8-820-8006
	7	3/4	1-5/16 to 1-5/8	8-521-1007	3	11	1-1/16	8-890-9007	8-820-8007
4	8	1	1-11/16 to 2	8-521-1008	3-1/2	12	1-7/16	8-890-9008	8-820-8007
	9	1-1/4	2-1/16 to 2-1/2	8-521-1009	3-3/4	13	1-13/16	8-890-9009	8-820-8009
5	10	1-1/2	2-9/16 to 3	8-521-1010	4	14	2-3/16	8-890-9010	8-820-8010
	11	1-3/4	3-1/16 to 3-1/2	8-521-1011	4-1/2	15	2-9/16	8-890-9011	8-820-8011

## Metric Sizes

Taper Number	Arbor Dia d (mm)	Fits Shell Reamer	Part Number	Taper Length E (mm)	OAL L (mm)	Wrench Size	Eject Collar Part Number	Arbor Key Part Number
3	16	31 to 35	8-521-1906	49.1	261	24	8-890-9016	8-820-8006
	22	44 to 50	8-521-1907	61.9	278	32	8-890-9022	8-820-8007
4	27	52 to 60	8-521-1909	69.9	325	36	8-890-9027	8-820-8027

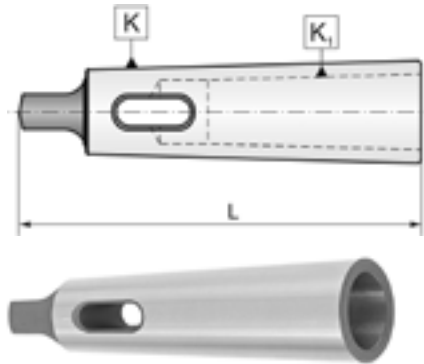


## Taper Sleeves

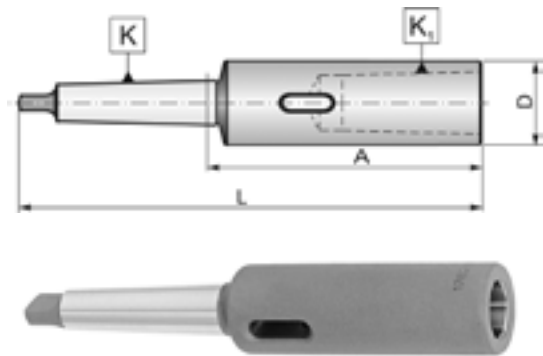
**MADE IN POLAND**

- Sleeves are made of Alloy Forged Steel for long durable service life
- Sleeve Type 1751 is hardened to RC 56-60 and ground throughout to ensure maximum accuracy
- Sleeve Type 1752 is soft with hardened tang only
- Taper seat T.I.R. <0.0004"

Regular Length



Extension Length



Supplier Model # 1751

MT Hole K1	MT Shank K	Hardened and Ground Throughout Part Number	OAL L
1	2	8-531-0005	3-5/8
1	3	8-531-0010	3-7/8
2		8-531-0015	4-3/8
1	4	8-531-0020	4-7/8
2		8-531-0025	5
3	4	8-531-0030	5-1/2
1	5	8-531-0035	6-1/8
2		8-531-0040	6-1/8
3		8-531-0045	6-1/8
4	6	8-531-0050	6-3/4
4		8-531-0055	8-5/8
5	6	8-531-0060	8-5/8

Supplier Model # 1762

MT Hole K1	MT Shank K	Soft, Hardened Tang Only Part Number	OAL L	Extension Length A	Dia D
1	2	8-531-1010	6-1/4	3-11/32	25/32
2		8-531-1015	6-7/8	4	1-3/16
3		8-531-1020	7-3/4	4-3/4	1-13/32
4		8-531-1025	8-1/2	5-3/4	1-7/8
2	3	8-531-1035	7-5/8	4	1-3/16
3		8-531-1040	8-1/2	4-3/4	1-13/32
4		8-531-1045	9-1/2	5-3/4	1-7/8
5	3	8-531-1050	10-1/2	7-1/8	2-1/2
2	4	8-531-1060	8-1/2	3-27/32	1-3/16
3		8-531-1065	9-1/2	4-13/16	1-13/32
4		8-531-1070	10-1/2	5-13/16	1-7/8
5	4	8-531-1075	11-7/8	7-3/16	2-1/2
3	5	8-531-1085	10-1/2	4-24/32	1-13/32
4		8-531-1090	11-7/8	5-15/16	1-7/8
5		8-531-1095	13-1/4	7-5/16	2-1/2
6		8-531-1100	15-3/8	9-23/32	3-7/32
4	6	8-531-1105	14	5-23/32	1-7/8
5		8-531-1110	15-3/8	7-3/32	2-1/2





# Morse Taper Tooling

Tooling Systems

MORSE TAPER

## Annular Cutter Holders

MADE IN POLAND

- MT shank
- Holder shank allows different machines to drive cutter
- Easily reaches out of the way places
- Select adapter lengths reduce the number of machine set ups
- For 1" depth of cut annular cutters



Type	Shank Size	Gage Length (in)	Part Number	Cutter Shank Size (in)	Replacement Spring Part Number
HEN-3	MT2	2"	8-561-3000	3/4	8-890-900H
HEN-3-6		6"	8-561-3006		
HEN-4	MT3	2"	8-561-4000	3/4	
HEN-4-6		6"	8-561-4006		
HEN-4-12		12"	8-561-4012		
HEN-8		2-3/4"	8-561-8000	1-1/4	



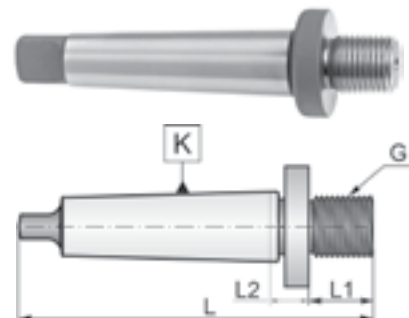
Please refer to our 2015 TMX Cutting Tools Catalog or [www.tmxtools.com](http://www.tmxtools.com) for a full selection of TMX Annular Cutters

## Morse Taper to Threaded Mount

MADE IN POLAND

Supplier Model # 7470

Morse Taper K	Thread G	Thread Length L1 (in)	Part Number	OAL L (in)	Cleanance Length L2 (in)
2	3/8-24	.6	8-531-6010	3.7	.197
	1/2-20	.6	8-531-6013	4.0	.472
	5/8-16	.7	8-531-6016	4.1	.500



# Morse Taper Tooling



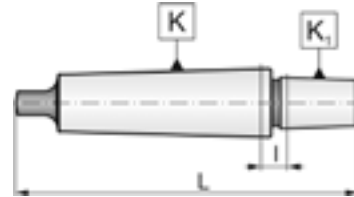
Tooling Systems

## Precision Drill Chuck Arbors (MT to JT Adapters)

**MADE IN  
POLAND**



Morse Taper to Jacobs Taper



MORSE TAPER

### Supplier Model # 5362

Morse Taper K	Jacobs Taper K1	Part Number	OAL L (in)	Clearance Length I (in)
1	1	8-531-1001	3.3	0.2
	2	8-531-1002	3.5	
	3	8-531-1003	4.0	0.3
	6	8-531-1006	3.7	
	33	8-531-1033		
2	1	8-531-2001	4.0	0.4
	2	8-531-2002	4.2	0.3
	3	8-531-2003	4.4	
	6	8-531-2006	4.2	
	33	8-531-2033		
3	2	8-531-3002	5.0	0.4
	3	8-531-3003	5.2	0.3
	4	8-531-3004	5.7	0.4
	5	8-531-3005	6.0	0.5
	6	8-531-3006	5.0	0.4
	33	8-531-3033		0.3
4	3	8-531-4003	6.3	0.5
	4	8-531-4004	6.7	0.4
	5	8-531-4005	6.9	
	6	8-531-4006	6.1	0.5
	33	8-531-4033		
5	3	8-531-5003	7.6	0.5
	4	8-531-5004	8.0	
	5	8-531-5005	8.2	
	6	8-531-5006	7.3	
	33	8-531-5033	7.4	0.6

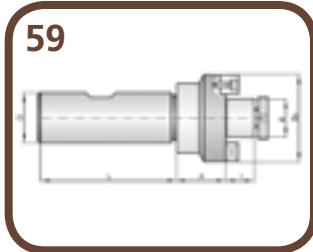


For drill chucks, see page 66





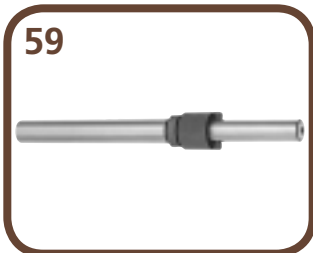
## CONTENTS



58 ER Collet Chucks

59 Shell Mill Arbors

59 Shell Reamer Arbors



60 Jacobs Taper Adapters

60 Rigid Tapping Chucks

61 Tension and Compression

Tapping Chucks

61 Slitting or Slotting Saw Arbors

61 Floating Reamer Holders

62 Slitting and Slotting Saw Arbors

63 Stub Milling Arbors

63 Annular Cutter Holders





# Straight Shank Tooling

Tooling Systems

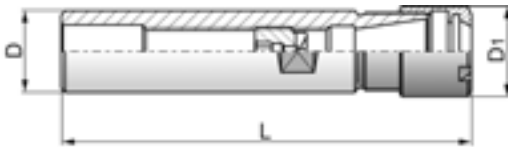
## ER Collet Chucks

**MADE IN  
POLAND**

- Wrench not included



ER11 and ER16



STRAIGHT SHANK

Supplier Model #7812

Collet Type	Shank Size D (in)	OAL L (in)	Part Number	Major Diameter D1 (in)
ER 11	1/2	6.2	8-502-1105	.630
	5/8	6.2	8-502-1106	
ER 16	5/8	6.0	8-502-1606	.875
	3/4	6.5	8-502-1607	
ER 20	3/4	5.5	8-502-2007	1.338
	1	5.5	8-502-2010	
ER 25	3/4	6.5	8-502-2507	1.650
	1	6.5	8-502-2510	
ER 32	1	3.75	8-502-3210	1.97
ER 40	1	4.50	8-502-4010	2.48
	1-1/4	4.75	8-502-4012	



For ER collets, see page 70

Straight Shank ER Collet Chuck sets are available on page 69



Collet Type	Wrenches	
	Part Number	
ER 11	8-800-P961	
ER 16	8-800-P976	
ER 20	8-800-P982	
ER 25	8-810-P925	
ER 32	8-810-P9032	
ER 40	8-810-P940	

Collet Type	Nut	
	Part Number	
ER 11	8-800-P951	
ER 16	8-800-P966	
ER 20	8-800-P821	
ER 25	8-800-P825	
ER 32	8-800-P832	
ER 40	8-800-P840	

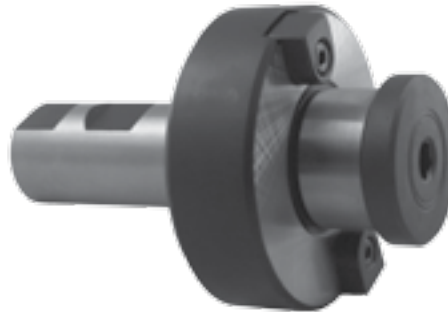
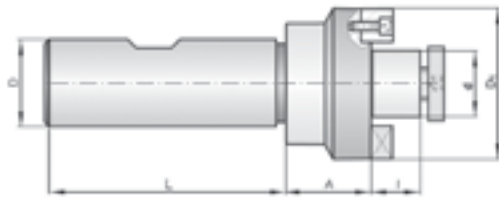
# Straight Shank Tooling



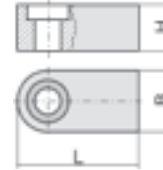
Tooling Systems

## Shell Mill Arbors

**MADE IN POLAND**



Arbor Key



Shank Dia D	Major Dia D1 (in)	Pilot/Arbor Dia d (in)	Shank Length L (in)	Part Number	Head Length A (in)	Pilot/Arbor Length I (in)	Key Height H (in)	Key Length L (in)	Key Width B (in)	Key Part Number	Key Screw Part Number	Arbor Screw Thread	Arbor Screw Part Number
3/4	1.75	.75	2.00	8-522-0005	.703	.672	.27	.40	5/16	8-820-P031	8-815-P155	3/8-24	8-815-P807
1	2.125	1.00	2.28	8-522-0010	.714	.672	.33	.44	3/8	8-820-P037	8-815-P160	1/2-20	8-815-P810
	2.50	1.25	2.28	8-522-0015	.845	.672			1/2	8-820-P050	8-815-P160	5/8-18	8-815-P812
1-1/4	1.77	.75	2.28	8-522-0025	1.00	.690	.39	.56	5/16	8-820-P031	8-815-P155	3/8-24	8-815-P807
	2.28	1.00	2.28	8-522-0030	1.00	.690			3/8	8-820-P037	8-815-P160	1/2-20	8-815-P810

STRAIGHT SHANK

## Shell Reamer Arbors

**MADE IN POLAND**

- Made of Alloy Forged Steel for a long durable service life
- Hardened to RC 56-60 and ground to ensure maximum accuracy
- Arbors are provided with an ejecting nut, collar, and key
- T.I.R. < 0.0004"



Supplier Model #5312

Size Number	Arbor Dia d (in)	Straight Shank		Taper Length E (in)	Fits Shell Reamer	OAL L (in)	Wrench Size (in)	Eject Collar Part Number	Arbor Key Part Number
		Part Number	Shank D (in)						
4	3/8	8-522-1004	1/2	2-1/4	21/32 to 25/32	9	19/32	8-890-9004	8-820-8004
5	1/2	8-522-1005	5/8	2-1/2	13/16 to 1-1/32	9-1/2	25/32	8-890-9005	8-820-8006
6	5/8	8-522-1006	3/4	2-3/4	1-1/16 to 1-9/32	10	7/8	8-890-9006	8-820-8006
7	3/4	8-522-1007	7/8	3	1-5/16 to 1-5/8	11	1-1/16	8-890-9007	8-820-8007
8	1	8-522-1008	1-1/8	3-1/2	1-11/16 to 2	12	1-7/16	8-890-9008	8-820-8007
9	1-1/4	8-522-1009	1-3/8	3-3/4	2-1/16 to 2-1/2	13	1-13/16	8-890-9009	8-820-8009
10	1-1/2	8-522-1010	1-5/8	4	2-9/16 to 3	14	2-3/16	8-890-9010	8-820-8010
11	1-3/4	8-522-1011	2	4-1/2	3-1/16 to 3-1/2	15	2-9/16	8-890-9011	8-820-8011



# Straight Shank Tooling

Tooling Systems

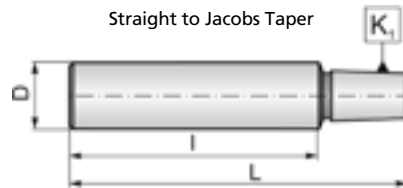
STRAIGHT SHANK

## Jacobs Taper Adapters

**MADE IN POLAND**

Supplier Model # 5353

Straight Shank		Jacobs Taper	OAL L (in)	Part Number
D (in)	I (in)	K1 (in)		
1/2	2-1/2	0	3.1	8-532-7000
		1	3.3	8-532-7001
		2	3.5	8-532-7002
		3	3.9	8-532-7003
		33	3.7	8-532-7033
		6	3.7	8-532-7006
5/8	2-1/2	1	3.3	8-532-7201
		2	3.5	8-532-7202
		3	3.9	8-532-7203
		33	3.5	8-532-7233
		6	3.6	8-532-7206
3/4	3	2	4.0	8-532-7402
		3	4.3	8-532-7403
		33	4.1	8-532-7433
		4	4.8	8-532-7404
		6	4.1	8-532-7406
1	3	2	4.1	8-532-7602
		3	4.3	8-532-7603
		33	4.2	8-532-7633
		4	4.8	8-532-7604
		6	4.2	8-532-7606

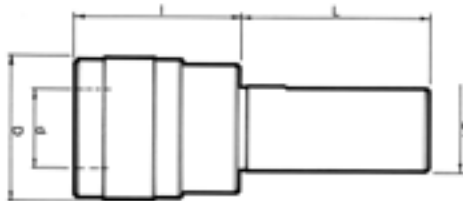


## Rigid Tapping Chucks with Cylindrical Shank

- Coolant through spindle capability
- No float for synchronous tapping



For tap adapters, see page 82

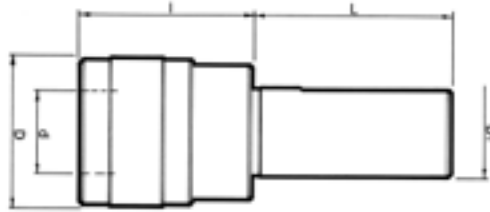


Shank Size D1 (in)	Adapter Size	Part Number	Inside Dia d (in)	Major Dia D (in)	Head Length I (in)	Shank Length L (in)	Tap Capacity
1.00	#1	8-543-1010	.748	1.30	1.60	1.95	#6-9/16"
	#2	8-543-1020	1.220	2.00	2.50	2.00	5/16"-1/2 NPT



## Tension and Compression Tapping Chucks with Cylindrical Shank

- Provides axial float
- Adjustable entry force



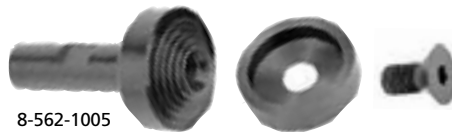
For tap adapters, see page 83



Shank Size D1 (in)	Chuck Size	Part Number	Inside Dia d (in)	Major Dia D (in)	Head Length l (in)	Shank Length L (in)	Tap Capacity	Tension and Compression
1.00	#1	8-544-1010	.748	1.50	1.76	1.95	#6-9/16"	.35
	#2	8-544-1020	1.220	2.17	2.52	2.00	5/16"-1/2 NPT	.59
1.50	#2	8-544-1520	1.220	2.17	2.52	3.50	5/16"-1/2 NPT	.59
	#3	8-544-1530	1.890	3.09	3.85	3.50	1/2"-1-3/8"	.94

STRAIGHT SHANK

## Slitting or Slotting Saw Arbors



8-562-1005



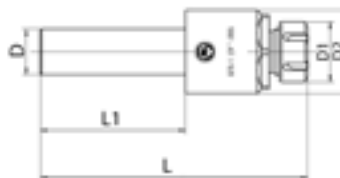
8-562-1010

Shank Type	Shank Dia (in)	Length (in)	Arbor Diameter (in)	Head Dia (in)	Part Number	Arbor Screw Part Number
Weldon	1/2	2-9/16	1/2, 5/8, 3/4, 7/8, 1	1.24	8-562-1005	8-815-P900
Straight	1/2	3-3/4	3/8	.61	8-562-1010	8-815-P901

## Floating Reamer Holders

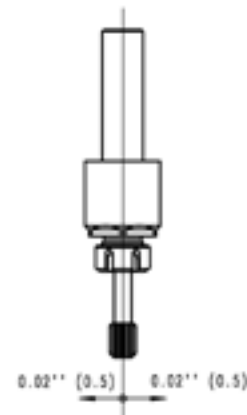
- Through spindle coolant capability

**MADE IN POLAND**



Supplier Model # 5275

Shank Size D (in)	Collet Size	Holder Part Number	OAL L (in)	Shank Length L1 (in)	Nut Dia D1 (in)	Major Dia D2 (in)	Nut Part Number	Wrench Part Number
1	ER 25	8-562-2510	7.35	4	1.650	2.284	8-800-P825	8-810-P925
1-1/14		8-562-2512						



Parallel float +/- 0.002"





# Straight Shank Tooling

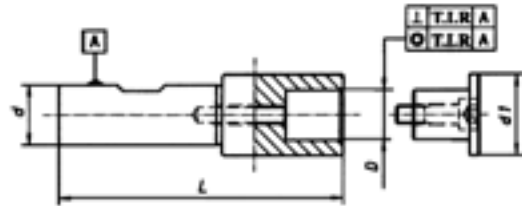
Tooling Systems

## Slitting and Slotting Saw Arbors

- Hardened and precisely ground
- Rigid arbors with extended length reach areas that standard short arbors cannot
- Each arbor is ground for precision within 0.002" or 0.0004" T.I.R. (see drawing and table)
- Super low profile cups allow cutter to get lower and closer to working area
- Plug style cup gives extra support and rigidity when working with larger diameter saws



STRAIGHT SHANK



0.0004" T.I.R.

Shank Dia D	Hole Size d	d1	L	Arbor .002" Part Number	Arbor .0004" Part Number	Arbor Screw Part Number	Hex Key Part Number
.500	.250	.500	2.70	8-562-4005	8-562-4305	8-815-P905	6-999-583
	.375	.625	2.88	8-562-4010	8-562-4310	8-815-P910	6-999-584
	.500	.750	3.07	8-562-4015	8-562-4315	8-815-P915	6-999-585
Set of 3 Arbors .250 - .500	-			8-562-4050	-	-	-
.750	.625	1.00	3.53	8-562-4105	8-562-4405	8-815-P925	6-999-585
	1.000	1.50	3.78	8-562-4110	8-562-4410	8-815-P930	6-999-586
	1.250	1.75	4.03	8-562-4115	8-562-4415	8-815-P935	
Set of 3 Arbors .625 - 1.250	-			8-562-4150	8-562-4450	-	-



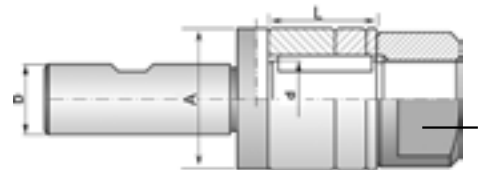
## Stub Milling Arbors

- Weldon shank
- Made of Alloy Forged Steel for long durable service life
- Hardened to RC 56-60 and ground to ensure maximum accuracy
- Face is held perpendicular to center line within 0.0004"
- Pilot diameter is sized for precision fit with cutter and is keyed for positive drive
- Left hand heavy duty locking nut and three arbor spacers are included

**MADE IN  
POLAND**



Additional arbor spacers available. See page 92



STRAIGHT SHANK

Supplier Model # 7565

Shank Dia D (in)	Arbor Dia d (in)	Part Number	Major Dia A (in)	Wrench Size S (in)	Gage Length L (in)
1/2	1/2	8-562-5050	.87	.75	1
	5/8	8-562-5062	1.00	.87	
	3/4	8-562-5075	1.16	1.00	
3/4	1/2	8-562-7550	.87	.75	
	5/8	8-562-7562	1.00	.87	
	3/4	8-562-7575	1.16	1.00	
	7/8	8-562-7587	1.37	1.12	
	1	8-562-7510	1.50		
1-1/4	8-562-7512	1.75	1.50		

## Annular Cutter Holders

- For 1" depth of cut Annular Cutter when using the ejector pilot

**MADE IN  
POLAND**



Straight Shank – 3 Flats				
Type	Cutter Shank Size (in)	Shank Size (in)	Gage Length (in)	Part Number
HEN-1	3/4	1/2	2-1/8"	8-562-9100
HEN-2		3/4	2"	8-562-9200
HEN-2-6			3"	8-562-9206
HEN-2-12			12"	8-562-9212
Spare ejecting spring		–		8-890-900H

Straight Shank – 2 Flats				
Type	Cutter Shank Size (in)	Shank Size (in)	Gage Length (in)	Part Number
HEN-9-6	3/4	3/4	6"	8-562-9006



Please refer to our 2015 TMX Cutting Tools Catalog or [www.tmxtools.com](http://www.tmxtools.com) for a full selection of TMX Annular Cutters





## CONTENTS

66



66 Heavy Duty Keyless Drill Chucks



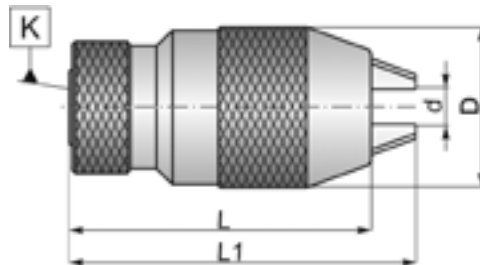
# Drill Chucks

Tooling Systems

## Heavy Duty Keyless Drill Chucks

**MADE IN  
POLAND**

- Numerical Control [NC] quality chucks
- 0.0015 T.I.R.
- Precision Ball Bearings
- Designed to be tightened and released by hand
- Self-tightening features
- Precision designed for high accuracy applications on either conventional or CNC machines in drilling, boring, and counterboring operations

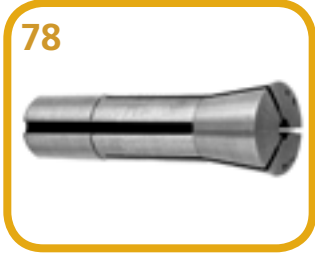


DRILL CHUCKS

Chuck Model	Part Number	Capacity d		Mount K	D (in)	L (in)	L1 (in)	Replacement Jaws (sold in sets of 3) Part Number
		inches	mm					
13/J2	8-600-0335	1/32-1/2	1-13	JT2	2	3.8	4.3	8-600-9013
13/J33	8-600-0337			JT33				
13/J6	8-600-0338			JT6				
16/J6	8-600-0368	1/8-5/8	3-16	JT6	2.3	4.06	4.65	8-600-9016
16/J3	8-600-0369			JT3		4.33	4.9	



## CONTENTS



- 68 CAT ER Collet Chuck Sets
- 68 NMTB ER Collet Chucks Sets
- 69 R8 Shank ER Collet Chuck Sets
- 69 Morse Taper ER Collet Chuck Set
- 69 Straight Shank ER Collet Chuck Sets
- 70 ER Spring Collets & Collet Sets in Fractional & Metric Sizes
- 72 ER Rubber Sealed Collets
- 73 ER Jetstream Sealed Collets
- 74 TG Precision Single Angle Collets
- 76 DA100, DA180, DA200, & DA300 Collets & Sets
- 77 5C Precision Round Collets & Sets
- 78 R8 Precision Round Collets & Sets
- 79 16C Precision Round Collets





# Collets

Tooling Systems

## CAT ER Collet Chuck Sets

- Each ER Collet Chuck Set Includes:
- CAT40 or CAT50 Collet Chuck
  - Assortment of ER Collets
  - Spanner Wrench
  - Collet Nut



Taper Size	Collet Type	Set Part Number	Number of Pcs in Set	Collet Sizes	Included Collet Chuck Part Number
40	ER 16	8-100-4162	9	1/8, 3/16, 1/4, 5/16, 3/8	8-100-4010
	ER 32	8-100-4323	13	1/8, 3/16, 1/4, 5/16, 3/8, 7/16, 1/2, 9/16, 5/8, 11/16, 3/4	8-100-4070
		8-100-4324			8-100-4075
ER 40	8-100-4404	17	1/8, 3/16, 1/4, 5/16, 3/8, 7/16, 1/2, 9/16, 5/8, 11/16, 3/4, 13/16, 7/8, 15/16, 1	8-100-4095	
50	ER 40	8-100-5404	17	1/8, 3/16, 1/4, 5/16, 3/8, 7/16, 1/2, 9/16, 5/8, 11/16, 3/4, 13/16, 7/8, 15/16, 1	8-100-5095

COLLETS

## NMTB ER Collet Chucks Sets

- Each ER Collet Chuck Set Includes:
- TMX Made In Poland Collet Chuck
  - ER Collets
  - Spanner Wrench
  - Collet Nut



Shank Size	Overall Length	Collet Type	Set Part Number	Collet Sizes	Included Chuck Part Number	Nut Part Number	Wrench Part Number
NMTB 30	5-1/16	ER 32	8-300-3032KIT	1/8, 3/16, 1/4, 5/16, 3/8, 7/16, 1/2, 9/16, 5/8, 11/16, 3/4	8-300-3032	8-800-P832	8-810-P932
NMTB 40	6-1/16		8-300-4032KIT		8-300-4032	8-800-P832	8-810-P932
NMTB 40	6-1/16	ER 40	8-300-4040KIT	1/8, 3/16, 1/4, 5/16, 3/8, 7/16, 1/2, 9/16, 5/8, 11/16, 3/4, 13/16, 7/8, 15/16, 1	8-300-4040	8-800-P840	8-810-2010
NMTB 50	7-3/4		8-300-5040KIT		8-300-5040	8-800-P840	8-810-2010



## R8 Shank ER Collet Chuck Sets

Set Includes:

- TMX Made In Poland Collet Chuck
- ER Collets
- Spanner Wrench
- Collet Nut



Collet Type	Shank Size	Overall Length	Set Part Number	Collet Sizes	Included Chuck Part Number	Nut Part Number	Wrench Part Number
ER 32	R8	6-1/4	8-500-3298	1/8, 3/16, 1/4, 5/16, 3/8, 7/16, 1/2, 9/16, 5/8, 11/16, 3/4	8-500-3008	8-800-P832	8-810-P932
ER 40	R8	6-1/2	8-500-4098	1/8, 3/16, 1/4, 5/16, 3/8, 7/16, 1/2, 9/16, 5/8, 11/16, 3/4, 13/16, 7/8, 15/16, 1	8-500-4008	8-800-P840	8-810-2010

## Morse Taper ER Collet Chuck Set

Set Includes:

- TMX Made In Poland Collet Chuck
- ER Collets
- Spanner Wrench
- Collet Nut



Shank Size	Overall Length	Collet Type	Set Part Number	Collet Sizes	Included Chuck Part Number	Nut Part Number	Wrench Part Number
MT-3	6-1/16	ER 32	8-501-3198	1/8, 3/16, 1/4, 5/16, 3/8, 7/16, 1/2, 9/16, 5/8, 11/16, 3/4	8-501-3203	8-800-P832	8-810-P932

## Straight Shank ER Collet Chuck Sets

Each ER Collet Chuck Set Includes:

- TMX Made In Poland Collet Chuck
- ER Collets
- Spanner Wrench
- Collet Nut



Collet Type	Shank Size	Overall Length	Set Part Number	Collet Sizes	Included Chuck Part Number	Nut Part Number	Wrench Part Number
ER 11	1/2	6.2	8-502-1195	1/32, 1/16, 3/32, 1/8, 3/16, 7/32, 1/4	8-502-1105	8-800-P951	8-800-P961
	5/8		8-502-1196		8-502-1106		8-800-P961
ER 16	5/8	6.0	8-502-1696	1/8, 3/16, 7/32, 1/4, 5/16, 11/32, 3/8	8-502-1606	8-800-P966	8-800-P976
	3/4	6.5	8-502-1697		8-502-1607		8-800-P966



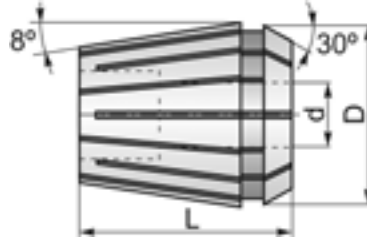


# Collets

Tooling Systems

## ER Spring Collets & Collet Sets in Fractional & Metric Sizes

- Wide holding range of each collet requires fewer collets and changes
- ER Collets collapse approximately 1/32" while maintaining full accuracy
- Unique self-releasing system eliminates sticking
- Concentricity to 0.0004"



Collet Style	D		L	
	(in)	(mm)	(in)	(mm)
ER 11	0.45	11.51	0.71	18.00
ER 16	0.67	16.99	1.06	26.98
ER 20	0.82	20.98	1.22	30.99
ER 25	1.02	26.01	1.38	35.00
ER 32	1.30	33.00	1.57	39.98
ER 40	1.61	41.00	1.81	46.00

**Collet Installation:** Squeeze the collet and snap the collet into the nut. You will feel the collet seat in the nut. Insert the collet into the holder. Insert cutting tool into the collet then tighten the nut with the wrench.

## ER Spring Collets, Fractional Sizes

Nominal Size d (in)	ER 11 Part Number	ER 16 Part Number	ER 20 Part Number	ER 25 Part Number	ER 32 Part Number	ER 40 Part Number
1/32	8-700-1112	8-700-1612*	–	–	–	–
1/16	8-700-1114	8-700-1614*	8-700-2014*	8-700-2514*	–	–
3/32	8-700-1116	8-700-1616*	8-700-2016*	8-700-2516*	8-700-3216*	–
1/8	8-700-1118	8-700-1618	8-700-2018	8-700-2518	8-700-3218	8-700-4018
5/32	–	8-700-1620*	8-700-2020*	8-700-2520*	8-700-3220*	8-700-4020*
3/16	8-700-1122	8-700-1622	8-700-2022	8-700-2522	8-700-3222	8-700-4022
7/32	8-700-1124	8-700-1624	8-700-2024	8-700-2524	8-700-3224*	8-700-4024*
1/4	8-700-1126	8-700-1626	8-700-2026	8-700-2526	8-700-3226	8-700-4026
9/32	–	8-700-1628*	8-700-2028*	8-700-2528*	8-700-3228*	8-700-4028*
5/16	–	8-700-1630	8-700-2030	8-700-2530	8-700-3230	8-700-4030
11/32	–	8-700-1632	8-700-2032	8-700-2532	8-700-3232*	8-700-4032*
3/8	–	8-700-1634	8-700-2034	8-700-2534	8-700-3234	8-700-4034
13/32	–	–	8-700-2036	8-700-2536	8-700-3236*	8-700-4036*
7/16	–	–	8-700-2038	8-700-2538	8-700-3238	8-700-4038
15/32	–	–	8-700-2040*	8-700-2540*	8-700-3240*	8-700-4040*
1/2	–	–	8-700-2042	8-700-2542	8-700-3242	8-700-4042
17/32	–	–	–	8-700-2544	8-700-3244*	8-700-4044*
9/16	–	–	–	8-700-2546	8-700-3246	8-700-4046
19/32	–	–	–	8-700-2548*	8-700-3248*	8-700-4048*
5/8	–	–	–	8-700-2550*	8-700-3250	8-700-4050
21/32	–	–	–	–	8-700-3252*	8-700-4052*
11/16	–	–	–	–	8-700-3254	8-700-4054
23/32	–	–	–	–	8-700-3256*	8-700-4056*
3/4	–	–	–	–	8-700-3258	8-700-4058
25/32	–	–	–	–	–	8-700-4060*
13/16	–	–	–	–	–	8-700-4062
27/32	–	–	–	–	–	8-700-4064*
7/8	–	–	–	–	–	8-700-4066
29/32	–	–	–	–	–	8-700-4068*
15/16	–	–	–	–	–	8-700-4070
31/32	–	–	–	–	–	8-700-4072*
1	–	–	–	–	–	8-700-4074
Collet Sets	7 Pc. Set	7 Pc. Set	10 Pc. Set	12 Pc. Set	11 Pc. Set	15 Pc. Set
	8-700-1195	8-700-1695	8-700-2095	8-700-2595	8-700-3295	8-700-4095

\*Collet sizes not contained in set. See following page for more information about ER collet sets.

COLLETS



## ER Spring Collets & Collet Sets, Metric Sizes

Nominal Size d (mm)	Clamping Range	Clamping Range	ER 11 Part Number	ER 16 Part Number	ER 20 Part Number	ER 25 Part Number	ER 32 Part Number	ER 40 Part Number
	mm	inches						
1	1-0.5	.019-.039	8-700-5001	8-700-5201	–	–	–	–
2	2-1	.039-.078	8-700-5002	8-700-5202	8-700-6002*	8-700-7002	–	–
3	3-2	.078-.118	8-700-5003	8-700-5203	8-700-6003	8-700-7003	8-700-8003	–
4	4-3	.118-.157	8-700-5004	8-700-5204	8-700-6004	8-700-7004	8-700-8004	8-700-9004
5	5-4	.157-.196	8-700-5005	8-700-5205	8-700-6005	8-700-7005	8-700-8005	8-700-9005
6	6-5	.196-.236	8-700-5006	8-700-5206	8-700-6006	8-700-7006	8-700-8006	8-700-9006
7	7-6	.236-.275	8-700-5007	8-700-5207	8-700-6007	8-700-7007	8-700-8007	8-700-9007
8	8-7	.275-.314	–	8-700-5208	8-700-6008	8-700-7008	8-700-8008	8-700-9008
9	9-8	.314-.354	–	8-700-5209	8-700-6009	8-700-7009	8-700-8009	8-700-9009
10	10-9	.354-.393	–	8-700-5210	8-700-6010	8-700-7010	8-700-8010	8-700-9010
11	11-10	.393-.433	–	–	8-700-6011	8-700-7011	8-700-8011	8-700-9011
12	12-11	.433-.472	–	–	8-700-6012	8-700-7012	8-700-8012	8-700-9012
13	13-12	.472-.511	–	–	8-700-6013	8-700-7013	8-700-8013	8-700-9013
14	14-13	.511-.551	–	–	–	8-700-7014	8-700-8014	8-700-9014
15	15-14	.551-.590	–	–	–	8-700-7015	8-700-8015	8-700-9015
16	16-15	.590-.629	–	–	–	8-700-7016	8-700-8016	8-700-9016
17	17-16	.629-.669	–	–	–	–	8-700-8017	8-700-9017
18	18-17	.669-.708	–	–	–	–	8-700-8018	8-700-9018
19	19-18	.708-.748	–	–	–	–	8-700-8019	8-700-9019
20	20-19	.748-.787	–	–	–	–	8-700-8020	8-700-9020
21	21-20	.787-.826	–	–	–	–	–	8-700-9021
22	22-21	.826-.866	–	–	–	–	–	8-700-9022
23	23-22	.866-.905	–	–	–	–	–	8-700-9023
24	24-23	.905-.944	–	–	–	–	–	8-700-9024
25	25-24	.944-.984	–	–	–	–	–	8-700-9025
26	26-25	.984-1.023	–	–	–	–	–	8-700-9026
Collet Sets			7 pc set	10 pc set	11 pc set	14 pc set	18 pc set	23 pc set
			8-700-5095	8-700-5295	8-700-6095	8-700-7095	8-700-8095	8-700-9095

\*Size not included in set

## ER Spring Collet Sets, Fractional & Metric Sizes

Collet Style	Part Number	# of Pcs	Included Size Range	Included Collet Sizes [*does not include]
<b>FRACTIONAL SIZES (in)</b>				
ER 11	8-700-1195	7	1/32 – 1/4 by 32nds	1/32, 1/16, 3/32, 1/8, 3/16, 7/32, 1/4 [*5/32]
ER 16	8-700-1695	7	1/8 – 3/8 by 32nds	1/8, 3/16, 7/32, 1/4, 5/16, 11/32, 3/8 [*5/32, *9/32]
ER 20	8-700-2095	10	1/8 – 1/2 by 32nds	1/8, 3/16, 7/32, 1/4, 5/16, 11/32, 3/8, 13/32, 7/16, 1/2 [*5/32, *9/32, *15/32]
ER 25	8-700-2595	12	1/8 – 9/16 by 32nds	1/8, 3/16, 7/32, 1/4, 5/16, 11/32, 3/8, 13/32, 7/16, 1/2, 17/32, 9/16 [*5/32, *9/32, *15/32]
ER 32	8-700-3295	11	1/8 – 3/4 by 16ths	1/8, 3/16, 1/4, 5/16, 3/8, 7/16, 1/2, 9/16, 5/8, 11/16, 3/4
ER 40	8-700-4095	15	1/8 – 1 by 16ths	1/8, 3/16, 1/4, 5/16, 3/8, 7/16, 1/2, 9/16, 5/8, 11/16, 3/4, 13/16, 7/8, 15/16, 1
<b>METRIC SIZES (mm)</b>				
ER 11	8-700-5095	7	1 – 7 by 1mm	
ER 16	8-700-5295	10	1 – 10 by 1mm	
ER 20	8-700-6095	11	3 – 13 by 1mm	
ER 25	8-700-7095	14	2 – 16 by 1mm	
ER 32	8-700-8095	18	3 – 20 by 1mm	
ER 40	8-700-9095	23	4 – 26 by 1mm	





# Collets

Tooling Systems

## ER Rubber Sealed Collets

- Designed for Coolant through tools
- 600 PSI Max Coolant Pressure
- All Collets are exact size



### Fractional Sizes

Size Inches	Part Numbers				
	ER16	ER20	ER25	ER32	ER40
1/8	8-701-1618	–	–	–	–
3/16	8-701-1622	8-701-2022	–	–	–
1/4	8-701-1626	8-701-2026	8-701-2526	8-701-3226	–
5/16	8-701-1630	8-701-2030	8-701-2530	8-701-3230	8-701-4030
3/8	8-701-1634	8-701-2034	8-701-2534	8-701-3234	8-701-4034
7/16	–	8-701-2038	8-701-2538	8-701-3238	8-701-4038
1/2	–	8-701-2042	8-701-2542	8-701-3242	8-701-4042
9/16	–	–	8-701-2546	8-701-3250	8-701-4046
5/8	–	–	8-701-2550	8-701-3258	8-701-4050
3/4	–	–	–	–	8-701-4058
7/8	–	–	–	–	8-701-4066
1	–	–	–	–	8-701-4074

### Metric Sizes

Size Metric	Part Numbers				
	ER16	ER20	ER25	ER32	ER40
3	8-701-6503	8-701-6603	8-701-6703	8-701-6803	–
4	8-701-6504	8-701-6604	8-701-6704	8-701-6804	–
5	8-701-6505	8-701-6605	8-701-6705	8-701-6805	–
6	8-701-6506	8-701-6606	8-701-6706	8-701-6806	8-701-6906
7	8-701-6507	8-701-6607	8-701-6707	8-701-6807	–
8	8-701-6508	8-701-6608	8-701-6708	8-701-6808	8-701-6908
9	–	8-701-6609	8-701-6709	8-701-6809	–
10	–	8-701-6610	8-701-6710	8-701-6810	8-701-6910
11	–	8-701-6611	8-701-6711	8-701-6811	8-701-6911
12	–	–	8-701-6712	8-701-6812	8-701-6912
13	–	–	8-701-6713	8-701-6813	8-701-6913
14	–	–	8-701-6714	8-701-6814	8-701-6914
15	–	–	–	8-701-6815	–
16	–	–	–	8-701-6816	8-701-6916
17	–	–	–	8-701-6817	–
18	–	–	–	8-701-6818	8-701-6918
19	–	–	–	8-701-6819	–
20	–	–	–	8-701-6820	8-701-6920
25	–	–	–	–	8-701-6925

COLLETS



## ER Jetstream Sealed Collets

- Designed for Non Coolant through tools
- Coolant is directed to the cutting edge
- 600 PSI Max Coolant Pressure
- All Collets are exact size



### Fractional Sizes

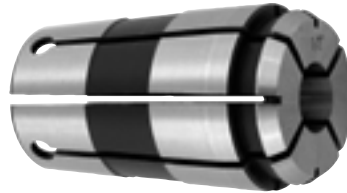
Size Inches	Part Numbers				
	ER16	ER20	ER25	ER32	ER40
1/8	8-702-5163	–	–	–	–
3/16	8-702-5164	8-702-5207	–	–	–
1/4	8-702-5166	8-702-5211	8-702-5238	8-702-5338	–
5/16	–	8-702-5213	8-702-5242	8-702-5340	8-702-5442
3/8	–	8-702-5217	8-702-5246	8-702-5346	8-702-5446
7/16	–	8-702-5221	8-702-5250	8-702-5350	8-702-5450
1/2	–	8-702-5223	8-702-5254	8-702-5354	8-702-5454
9/16	–	–	8-702-5258	–	8-702-5458
5/8	–	–	8-702-5262	8-702-5362	8-702-5462
3/4	–	–	–	8-702-5370	8-702-5470
7/8	–	–	–	–	8-702-5478
1	–	–	–	–	8-702-5486

### Metric Sizes

Size Metric	Part Numbers				
	ER16	ER20	ER25	ER32	ER40
3	8-702-7503	8-702-7603	8-702-7703	8-702-7803	–
4	8-702-7504	8-702-7604	8-702-7704	8-702-7804	–
5	8-702-7505	8-702-7605	8-702-7705	8-702-7805	–
6	8-702-7506	8-702-7606	8-702-7706	8-702-7806	8-702-7906
7	8-702-7507	8-702-7607	8-702-7707	8-702-7807	–
8	8-702-7508	8-702-7608	8-702-7708	8-702-7808	8-702-7908
9	–	8-702-7609	8-702-7709	8-702-7809	–
10	–	8-702-7610	8-702-7710	8-702-7810	8-702-7910
11	–	8-702-7611	8-702-7711	8-702-7811	8-702-7911
12	–	–	8-702-7712	8-702-7812	8-702-7912
13	–	–	8-702-7713	8-702-7813	8-702-7913
14	–	–	8-702-7714	8-702-7814	8-702-7914
15	–	–	–	8-702-7815	–
16	–	–	–	8-702-7816	8-702-7916
17	–	–	–	8-702-7817	–
18	–	–	–	8-702-7818	8-702-7918
19	–	–	–	8-702-7819	–
20	–	–	–	8-702-7820	8-702-7920
25	–	–	–	–	8-702-7925

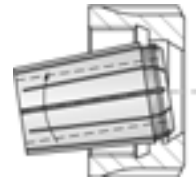
## TG Precision Single Angle Collets TG75 & TG100

- TG collets collapse approximately 1/64"
- Completely interchangeable with all leading brands
- Hardened and ground to ensure maximum accuracy



Fractional	TG75	TG100
d (in)	Part Number	Part Number
3/32	8-703-1108	8-703-1308
7/64	8-703-1110	8-703-1310
1/8	8-703-1112	8-703-1312
9/64	8-703-1114	8-703-1314
5/32	8-703-1116	8-703-1316
11/64	8-703-1118	8-703-1318
3/16	8-703-1120	8-703-1320
13/64	8-703-1122	8-703-1322
7/32	8-703-1124	8-703-1324
15/64	8-703-1126	8-703-1326
1/4	8-703-1128	8-703-1328
17/64	8-703-1130	8-703-1330
9/32	8-703-1132	8-703-1332
19/64	8-703-1134	8-703-1334
5/16	8-703-1136	8-703-1336
21/64	8-703-1138	8-703-1338
11/32	8-703-1140	8-703-1340
23/64	8-703-1142	8-703-1342
3/8	8-703-1144	8-703-1344
25/64	8-703-1146	8-703-1346
13/32	8-703-1148	8-703-1348
27/64	8-703-1150	8-703-1350
7/16	8-703-1152	8-703-1352
29/64	8-703-1154	8-703-1354
15/32	8-703-1156	8-703-1356
31/64	8-703-1158	8-703-1358
1/2	8-703-1160	8-703-1360
33/64	8-703-1162	8-703-1362
17/32	8-703-1164	8-703-1364
35/64	8-703-1166	8-703-1366
9/16	8-703-1168	8-703-1368
37/64	8-703-1170	8-703-1370
19/32	8-703-1172	8-703-1372
39/64	8-703-1174	8-703-1374
5/8	8-703-1176	8-703-1376

Fractional	TG75	TG100
d (in)	Part Number	Part Number
41/64	8-703-1178	8-703-1378
21/32	8-703-1180	8-703-1380
43/64	8-703-1182	–
11/16	8-703-1184	8-703-1384
45/64	8-703-1186	8-703-1386
23/32	8-703-1188	8-703-1388
47/64	8-703-1190	8-703-1390
3/4	8-703-1192	8-703-1392
49/64	–	8-703-1394
25/32	–	8-703-1396
51/64	–	8-703-1398
13/16	–	8-703-1400
53/64	–	8-703-1402
27/32	–	8-703-1404
7/8	–	8-703-1408
57/64	–	8-703-1410
29/32	–	8-703-1412
59/64	–	8-703-1414
15/16	–	8-703-1416
61/64	–	8-703-1418
31/32	–	8-703-1420
63/64	–	8-703-1422
1	–	8-703-1424



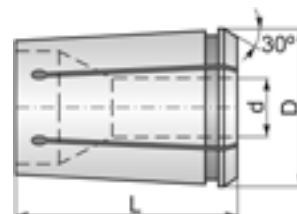
Collet must be inserted into the nose piece before it is put into the chuck

### TG Collet Sets

Collet Type	Part Number	Number of Pieces	Collet Sizes Included
TG75	8-703-1195	11	1/8 -3/4 x 16ths
	8-703-1197	43	3/32 -3/4 x 64ths
TG100	8-703-1515	15	1/8 -1 x 16ths
	8-703-1530	30	3/32 -1 x 32nds
TG150	8-703-1693	17	1/2 -1-1/2 x 16ths
	8-703-1695	33	1/2 -1-1/2 x 32nds

### Dimensions

Collet Type	Diameter D (in)	Length L (in)	Clamping Range
TG75	1.062	1.844	3/32 to 3/4
TG100	1.379	2.375	3/32 to 1
TG150	2.001	3.000	1/2 to 1-1/2



## TG Precision Single Angle Collets TG 150

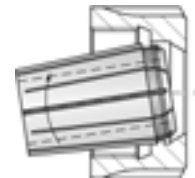
- Concentricity to 0.0004"
- TG collets collapse approximately 1/64"
- Completely interchangeable with all leading brands
- Hardened and ground to ensure maximum accuracy



Fractional	TG150
d (in)	Part Number
1/2	8-703-1560
33/64	8-703-1562
17/32	8-703-1564
35/64	8-703-1566
9/16	8-703-1568
37/64	8-703-1570
19/32	8-703-1572
39/64	8-703-1574
5/8	8-703-1576
41/64	8-703-1578
21/32	8-703-1580
43/64	8-703-1582
11/16	8-703-1584
45/64	8-703-1586
23/32	8-703-1588
47/64	8-703-1590
3/4	8-703-1592
49/64	8-703-1594
25/32	8-703-1596
51/64	8-703-1598
13/16	8-703-1600
53/64	8-703-1602
27/32	8-703-1604
55/64	8-703-1606
7/8	8-703-1608
57/64	8-703-1610
29/32	8-703-1612
59/64	8-703-1614
15/16	8-703-1616
61/64	8-703-1618
31/32	8-703-1620
63/64	8-703-1622
1	8-703-1624

Fractional	TG150
d (in)	Part Number
1-1/64	8-703-1626
1-1/32	8-703-1628
1-3/64	8-703-1630
1-1/16	8-703-1632
1-5/64	8-703-1634
1-7/64	8-703-1638
1-1/8	8-703-1640
1-9/64	8-703-1642
1-5/32	8-703-1644
1-11/64	8-703-1646
1-3/16	8-703-1648
1-13/64	8-703-1650
1-7/32	8-703-1652
1-15/64	8-703-1654
1-1/4	8-703-1656
1-9/32	8-703-1660
1-19/64	8-703-1662
1-5/16	8-703-1664
1-21/64	8-703-1666
1-11/32	8-703-1668
1-23/64	8-703-1670
1-3/8	8-703-1672
1-25/64	8-703-1674
1-13/32	8-703-1676
1-27/64	8-703-1678
1-7/16	8-703-1680
1-29/64	8-703-1682
1-15/32	8-703-1684
1-31/64	8-703-1686
1-1/2	8-703-1688

Collet must be inserted into the nose piece before it is put into the chuck

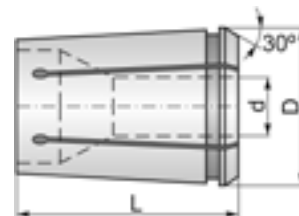


### TG Collet Sets

Collet Type	Part Number	Number of Pieces	Collet Sizes Included
TG75	8-703-1195	11	1/8 -3/4 x 16ths
	8-703-1197	43	3/32 -3/4 x 64ths
TG100	8-703-1515	15	1/8 -1 x 16ths
	8-703-1530	30	3/32 -1 x 32nds
TG150	8-703-1693	17	1/2 -1-1/2 x 16ths
	8-703-1695	33	1/2 -1-1/2 x 32nds

### Dimensions

Collet Type	Diameter D (in)	Length L (in)	Clamping Range
TG75	1.062	1.844	3/32 to 3/4
TG100	1.379	2.375	3/32 to 1
TG150	2.001	3.000	1/2 to 1-1/2





# Collets

Tooling Systems

## DA100, DA180, DA200, & DA300 Collets & Sets



### Fractional Sizes

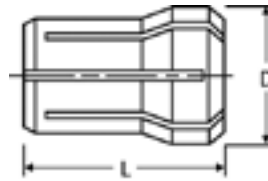
Size	Part Numbers			
	DA100	DA180	DA200	DA300
3/64	8-704-1030	–	8-704-1234	8-704-1324
1/16	8-704-1031	8-704-1106	8-704-1235	8-704-1325
5/64	8-704-1032	8-704-1107	8-704-1236	8-704-1326
3/32	8-704-1033	8-704-1108	8-704-1237	8-704-1327
7/64	8-704-1034	8-704-1109	8-704-1238	8-704-1328
1/8	8-704-1035	8-704-1110	8-704-1240	8-704-1330
9/64	8-704-1036	8-704-1111	8-704-1241	8-704-1331
5/32	8-704-1037	8-704-1112	8-704-1242	8-704-1332
11/64	8-704-1038	8-704-1113	8-704-1243	8-704-1333
3/16	8-704-1039	8-704-1114	8-704-1244	8-704-1334
13/64	8-704-1040	8-704-1115	8-704-1245	8-704-1335
7/32	8-704-1041	8-704-1116	8-704-1246	8-704-1336
15/64	8-704-1042	8-704-1117	8-704-1247	8-704-1337
1/4	8-704-1043	8-704-1118	8-704-1248	8-704-1338
17/64	8-704-1044	8-704-1119	8-704-1249	–
9/32	8-704-1045	8-704-1120	8-704-1250	–
19/64	8-704-1046	8-704-1121	8-704-1251	–
5/16	8-704-1047	8-704-1122	8-704-1252	–
21/64	8-704-1048	8-704-1123	8-704-1253	–
11/32	8-704-1049	8-704-1124	8-704-1254	–
23/64	8-704-1050	8-704-1125	8-704-1255	–
3/8	8-704-1051	8-704-1126	8-704-1256	–
25/64	8-704-1052	8-704-1127	8-704-1257	–
13/32	8-704-1053	8-704-1128	–	–
27/64	8-704-1054	8-704-1129	–	–
7/16	8-704-1055	8-704-1130	–	–
29/64	8-704-1056	8-704-1131	–	–
15/32	8-704-1057	8-704-1132	–	–
31/64	8-704-1058	8-704-1133	–	–
1/2	8-704-1059	8-704-1134	–	–
33/64	–	8-704-1135	–	–
17/32	–	8-704-1136	–	–
35/64	–	8-704-1137	–	–
9/16	8-704-1063	8-704-1138	–	–
37/64	–	8-704-1139	–	–
19/32	–	8-704-1140	–	–
39/64	–	8-704-1141	–	–
5/8	–	8-704-1142	–	–
21/32	–	8-704-1144	–	–
11/16	–	8-704-1146	–	–
23/32	–	8-704-1148	–	–
47/64	–	8-704-1149	–	–
3/4	–	8-704-1150	–	–

### Metric Sizes

Size	DA180 Part Number	Collet Range
3 mm	8-704-1503	3-2
6 mm	8-704-1506	6-5
7 mm	8-704-1507	7-6
8 mm	8-704-1508	8-7
10 mm	8-704-1510	10-9
11 mm	8-704-1511	11-10
12 mm	8-704-1512	12-11
14 mm	8-704-1514	14-13

### Fractional Size Sets

Collet Series	Part Number	No of Pieces	Range
DA 100	8-704-1070	11	1/4 - 9/16 by 32nds
	8-704-1075	21	1/4 - 9/16 by 64ths
DA 200	8-704-1270	9	1/8 - 3/8 by 32nds
	8-704-1275	17	1/8 - 3/8 by 64ths
DA 180	8-704-1192	17	1/4 - 3/4 by 32nds
	8-704-1194	33	1/4 - 3/4 by 64ths
DA 300	8-704-1340	5	1/8 - 1/4 by 32nds
	8-704-1344	9	1/8 - 1/4 by 64ths



### Dimensions

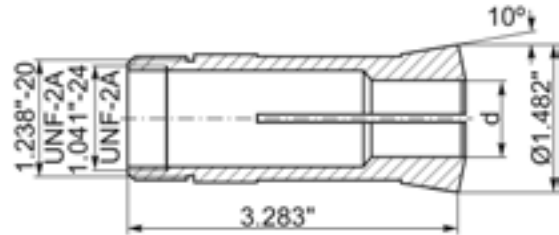
Collet Type	Collet Range	Body Dia D	OAL L
DA300	1/8 - 1/4	.375	1.000
DA200	1/8 - 25/64	.531	1.188
DA100	1/8 - 9/16	.769	1.438
DA180	1/4 - 3/4	0.873-1.035	1.637



## 5C Precision Round Collets & Sets

- Concentricity to 0.0004"

External Thread: 1.238" x 20 RH  
Internal Thread: 1.047" x 24 RH



### Fractional Sizes

Size	Part Number	Size	Part Number	Size	Part Number
3/64	8-705-5002	27/64	8-705-5050	51/64	8-705-5098
1/16	8-705-5004	7/16	8-705-5052	13/16	8-705-5100
5/64	8-705-5006	29/64	8-705-5054	53/64	8-705-5102
3/32	8-705-5008	15/32	8-705-5056	27/32	8-705-5104
7/64	8-705-5010	31/64	8-705-5058	55/64	8-705-5106
1/8	8-705-5012	1/2	8-705-5060	7/8	8-705-5108
9/64	8-705-5014	33/64	8-705-5062	57/64	8-705-5110
5/32	8-705-5016	17/32	8-705-5064	29/32	8-705-5112
11/64	8-705-5018	35/64	8-705-5066	59/64	8-705-5114
3/16	8-705-5020	9/16	8-705-5068	15/16	8-705-5116
13/64	8-705-5022	37/64	8-705-5070	61/64	8-705-5118
7/32	8-705-5024	19/32	8-705-5072	31/32	8-705-5120
15/64	8-705-5026	39/64	8-705-5074	63/64	8-705-5122
1/4	8-705-5028	5/8	8-705-5076	1	8-705-5124
17/64	8-705-5030	41/64	8-705-5078	1-1/64	8-705-5126
9/32	8-705-5032	21/32	8-705-5080	1-1/32	8-705-5128
19/64	8-705-5034	43/64	8-705-5082	1-3/64	8-705-5130
5/16	8-705-5036	11/16	8-705-5084	1-1/16	8-705-5132
21/64	8-705-5038	45/64	8-705-5086	1-5/64	8-705-5134
11/32	8-705-5040	23/32	8-705-5088	1-3/32	8-705-5136
23/64	8-705-5042	47/64	8-705-5090	1-7/64	8-705-5138
3/8	8-705-5044	3/4	8-705-5092	1-1/8	8-705-5140
25/64	8-705-5046	49/64	8-705-5094		
13/32	8-705-5048	25/32	8-705-5096		

### Metric Sizes

Size (mm)	Part Number
3	8-705-5603
4	8-705-5604
5	8-705-5605
6	8-705-5606
7	8-705-5607
8	8-705-5608
9	8-705-5609
10	8-705-5610
11	8-705-5611
12	8-705-5612
13	8-705-5613
14	8-705-5614
15	8-705-5615
16	8-705-5616
17	8-705-5617
18	8-705-5618
19	8-705-5619
20	8-705-5620
21	8-705-5621
22	8-705-5622
23	8-705-5623
24	8-705-5624
25	8-705-5625
26	8-705-5626

COLLETS



### 5C Emergency Collet

Description	Part Number
Steel 1/16"	8-705-5404

### 5C Collet Sets

Collet Sizes	No of Pieces	Collet Sets	Part Number
5C Fractional	18	18 piece 1/16 - 1-1/8 by 16ths	8-705-5168
5C Metric	24	24 Piece 3mm - 26mm by 1mm	8-705-5674





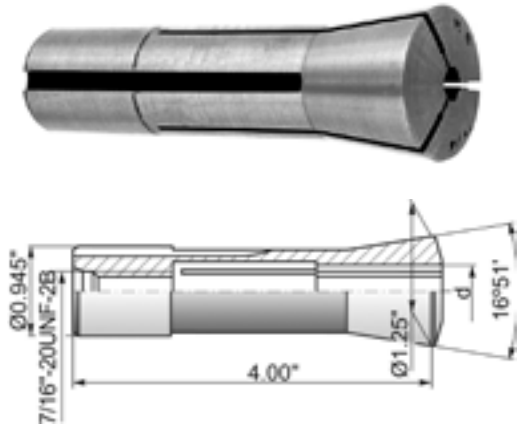


# Collets

Tooling Systems

## R8 Precision Round Collets & Sets

- Concentricity to 0.0004"



### Fractional Sizes

Size (in)	Part Number
1/16	8-708-8005
3/32	8-708-8010
1/8	8-708-8012
5/32	8-708-8015
3/16	8-708-8018
7/32	8-708-8021
1/4	8-708-8025
9/32	8-708-8028
5/16	8-708-8031
11/32	8-708-8034
3/8	8-708-8037
13/32	8-708-8040
7/16	8-708-8043
15/32	8-708-8046
1/2	8-708-8050
17/32	8-708-8053
9/16	8-708-8056
19/32	8-708-8059
5/8	8-708-8062
21/32	8-708-8065
11/16	8-708-8068
23/32	8-708-8071
3/4	8-708-8075
25/32	8-708-8078
13/16	8-708-8081
27/32	8-708-8084
7/8	8-708-8087
1	8-708-8099

### Metric Sizes

Size (mm)	Part Number
2	8-708-8602
3	8-708-8603
4	8-708-8604
5	8-708-8605
6	8-708-8606
7	8-708-8607
8	8-708-8608
9	8-708-8609
10	8-708-8610
11	8-708-8611
12	8-708-8612
13	8-708-8613
14	8-708-8614
15	8-708-8615
16	8-708-8616
17	8-708-8617
18	8-708-8618
19	8-708-8619
20	8-708-8620

COLLETS

### R8 Collet Sets

Collet Sizes	No of Pieces	Range	Part Number
R8 Metric	19	2 mm - 20 mm by 1 mm	8-708-8669
R8 Fractional	13	1/8 - 7/8 by 16ths	8-708-8113
R8 Fractional	27	1/16 - 7/8 by 32nds	8-708-8127



13 Piece Collet Set 1/8" - 7/8" by 16ths  
Part Number: 8-708-8113



27 Piece Collet Set 1/16" - 7/8" by 32nds  
Part Number: 8-708-8127



## 16C Precision Round Collets

- Concentricity to 0.0004"
- External thread: M47.5" x 1.75 RH
- Internal Thread: 1-11/16 x 20 RH



Size	Part Number
5/64	8-716-1006
3/32	8-716-1008
1/8	8-716-1012
9/64	8-716-1014
5/32	8-716-1016
11/64	8-716-1018
3/16	8-716-1020
13/64	8-716-1022
7/32	8-716-1024
15/64	8-716-1026
1/4	8-716-1028
17/64	8-716-1030
9/32	8-716-1032
19/64	8-716-1034
5/16	8-716-1036
21/64	8-716-1038
11/32	8-716-1040
23/64	8-716-1042
3/8	8-716-1044
25/64	8-716-1046
13/32	8-716-1048
27/64	8-716-1050
7/16	8-716-1052

Size	Part Number
29/64	8-716-1054
15/32	8-716-1056
31/64	8-716-1058
1/2	8-716-1060
33/64	8-716-1062
17/32	8-716-1064
35/64	8-716-1066
9/16	8-716-1068
37/64	8-716-1070
19/32	8-716-1072
39/64	8-716-1074
5/8	8-716-1076
41/64	8-716-1078
21/32	8-716-1080
43/64	8-716-1082
11/16	8-716-1084
45/64	8-716-1086
23/32	8-716-1088
47/64	8-716-1090
3/4	8-716-1092
49/64	8-716-1094
25/32	8-716-1096
51/64	8-716-1098

Size	Part Number
13/16	8-716-1100
53/64	8-716-1102
27/32	8-716-1104
55/64	8-716-1106
7/8	8-716-1108
57/64	8-716-1110
29/32	8-716-1112
59/64	8-716-1114
15/16	8-716-1116
61/64	8-716-1118
31/32	8-716-1120
63/64	8-716-1122
1	8-716-1124
1-1/16	8-716-1132
1-1/8	8-716-1140
1-3/16	8-716-1142
1-1/4	8-716-1144
1-5/16	8-716-1146
1-3/8	8-716-1148
1-7/16	8-716-1150
1-1/2	8-716-1152
1-9/16	8-716-1154
1-5/8	8-716-1156





## CONTENTS



82 Quick Change Positive Drive Tap Adapters

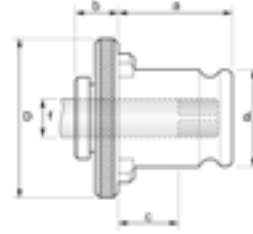
83 Quick Change Torque Control Tap Adapters



# Tap Adapters

## Quick Change Positive Drive Tap Adapters for Rigid Tap Holders

- Tap Shank ANSI B94.9-1999



\* Long Shank  
\*\* Short Shank

Adapter Size	Tap Size		Part Number	Tap Shank Dia f	Drive Square Size	a	b	c	d	D
	inches	mm		inches						
#1	#6	M1.6-M3.5	8-722-1036	0.141	0.110	21.5	7	11	19	30
	#8	M4	8-722-1041	0.168	0.131					
	#10	M4.5, M5	8-722-1048	0.194	0.152					
	#12	–	8-722-1054	0.220	0.165					
	1/4	M6, M6.3	8-722-1063	0.255	0.191					
	5/16	M7, M8	8-722-1079	0.318	0.238					
	3/8	M10	8-722-1095	0.381	0.286					
	1/8 NPT(LS)*	–	8-722-1097	0.437	0.328					
	1/8 NPT(SS)**	–	8-722-1098	0.313	0.234					
	7/16	M11	8-722-1111	0.323	0.242					
1/2	M12, M12.5	8-722-1127	0.367	0.275						
9/16	M14	8-722-1142	0.429	0.322						
#2	5/16	M7, M8	8-722-2079	0.318	0.238	35	9	19	31	46
	3/8	M10	8-722-2095	0.381	0.286					
	7/16	M11	8-722-2111	0.323	0.242					
	1/2	M12, M12.5	8-722-2127	0.367	0.275					
	9/16	M14	8-722-2142	0.429	0.322					
	5/8	M16	8-722-2158	0.480	0.360					
	11/16	M18	8-722-2174	0.542	0.406					
	3/4	–	8-722-2190	0.590	0.442					
	13/16	M20	8-722-2205	0.652	0.489					
	7/8 UNF	–	8-722-2222	0.697	0.523					
	1/4 NPT	–	8-722-2131	0.562	0.421					
	3/8 NPT	–	8-722-2166	0.700	0.531					
	1/2 NPT	–	8-722-2209	0.6875	0.515					
#3	1/2	M12, M12.5	8-722-3127	0.367	0.275	55.5	10	17	48	48
	9/16	M14	8-722-3142	0.429	0.322					
	5/8	M16	8-722-3158	0.480	0.360					
	3/8 NPT	–	8-722-3166	0.700	0.531					
	11/16	M18	8-722-3174	0.542	0.406					
	3/4	–	8-722-3190	0.590	0.442					
	13/16	M20	8-722-3206	0.652	0.489					
	1/2 NPT	–	8-722-3209	0.6875	0.515					
	7/8	M22	8-722-3222	0.697	0.523					
	15/16	M24	8-722-3238	0.760	0.570					
	1	M25	8-722-3254	0.800	0.600					
	3/4 NPT	–	8-722-3264	0.9063	0.679					
	1-1/8	M27	8-722-3286	0.896	0.672					
	1-1/4	M30	8-722-3317	1.021	0.766					
	1 NPT	–	8-722-3332	1.1250	0.843					
1-3/8	M33	8-722-3349	1.108	0.831	63	12	27	60	83	
#4	1-1/2	M36	8-722-4381	1.233	0.925	63	38	4	60	83
	1-5/8	M39	8-722-4412	1.305	0.925					
	1-3/4	M42	8-722-4444	1.430	1.072					
	1-7/8	–	8-722-4476	1.519	1.139					
	1-1/4 NPT	–	8-722-4485	1.3125	0.984					
	1-1/2 NPT	–	8-722-4490	1.5000	1.125					

TAP ADAPTERS

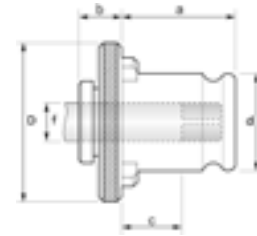
# Tap Adapters



Tooling Systems

## Quick Change Torque Control Tap Adapters for Tension/Compression Tap Holders

- Tap Shank ANSI B94.9-1999



Adapter Size	Tap Size		Part Number	Tap Shank Dia f	Square Drive Size	a	b	c	d	D
	inches	mm		inches						
#1	#6	M1.6-M3.5	8-725-1036	0.141	0.110	21.5	25	8	19	32
	#8	M4	8-725-1041	0.168	0.131					
	#10	M4.5,M5	8-725-1048	0.194	0.152					
	#12	-	8-725-1054	0.220	0.165					
	1/4	-	8-725-1063	0.255	0.191					
	5/16	M7, M8	8-725-1079	0.318	0.238					
	3/8	M10	8-725-1095	0.381	0.286					
	1/8 NPT(LS)*	-	8-725-1097	0.437	0.328					
	1/8 NPT(SS)**	-	8-725-1098	0.313	0.234					
	7/16	M11	8-725-1111	0.323	0.242					
#2	1/2	M12, M12.5	8-725-1127	0.367	0.275	35	33	4	31	50
	9/16	M14	8-725-1142	0.429	0.322					
	5/16	M7, M8	8-725-2079	0.318	0.238					
	3/8	M10	8-725-2095	0.381	0.286					
	7/16	M11	8-725-2111	0.323	0.242					
	1/2	M12, M12.5	8-725-2127	0.367	0.275					
	9/16	M14	8-725-2142	0.429	0.322					
	5/8	M16	8-725-2158	0.480	0.360					
	3/4	-	8-725-2190	0.590	0.442					
	13/16	M20	8-725-2205	0.652	0.489					
	7/8	M22	8-725-2222	0.697	0.523					
	1/4 NPT	-	8-725-2135	0.562	0.421					
#3	3/8 NPT	-	8-725-2168	0.700	0.531	55.5	42	1	48	72
	1/2 NPT	-	8-725-2212	0.6875	0.515					
	1/2	M12, M12.5	8-725-3127	0.367	0.275					
	3/4	-	8-725-3166	0.700	0.531					
	13/16	M20	8-725-3206	0.652	0.489					
	1/2 NPT	-	8-725-3209	0.6875	0.515					
	7/8	M22	8-725-3222	0.697	0.523					
	15/16	M24	8-725-3238	0.760	0.570					
	1	M25	8-725-3254	0.800	0.600					
	3/4 NPT	-	8-725-3264	0.9063	0.679					
	1-1/8	M27	8-725-3286	0.896	0.672					
	1-1/4	M30	8-725-3317	1.021	0.766					
1 NPT	-	8-725-3332	1.1250	0.843						
1-3/8	M33	8-725-3349	1.108	0.831						

TAP ADAPTERS





## CONTENTS



86 Retention Knobs



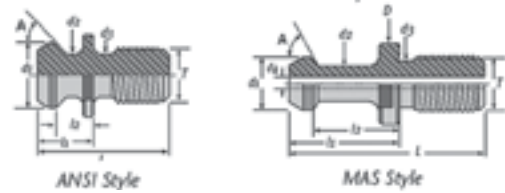


# Retention Knobs

Tooling Systems

RETENTION KNOBS

## Retention Knobs

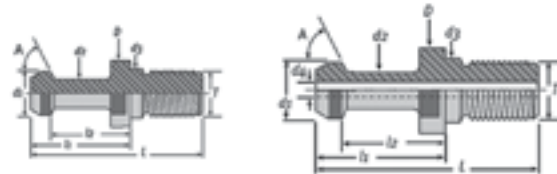


### CAT Solid

Part Number	Type	A	d1	d2	d3	L	I1	I2	T
8-750-006	CAT 40-ANSI Solid	45°	0.740	0.490	0.490	1.500	0.640	.4400	5/8 - 11
8-750-008	CAT 40-MAS-I Solid	45°	0.590	0.394	0.512	2.250	1.266	.9900	5/8 - 11
8-750-010	CAT 40-MAS-II Solid	60°	0.590	0.394	0.512	2.250	1.266	.9900	5/8 - 11
8-750-012	CAT 40-MAS-III Solid	90°	0.590	0.394	0.512	2.250	1.266	.9900	5/8 - 11
8-750-014	CAT 50-MAS-I Solid	45°	0.906	0.669	0.827	3.346	1.772	1.378	1 - 8
8-750-016	CAT 50-MAS-II Solid	60°	0.906	0.669	0.827	3.346	1.772	1.378	1 - 8
8-750-018	CAT 50-MAS-III Solid	90°	0.906	0.669	0.827	3.346	1.772	1.378	1 - 8
8-750-022	CAT 50-ANSI Solid	45°	1.140	0.820	0.820	2.300	1.000	.700	1 - 8

### CAT Coolant

Part Number	Type	A	d1	d2	d3	d4	L	I1	I2	T
8-750-028	CAT 40-ANSI-C	45°	0.740	0.490	0.490	0.157	1.500	0.640	.440	5/8 - 11
8-750-030	CAT 40-Coolant-I	45°	0.590	0.394	0.512	0.157	2.250	1.266	.990	5/8 - 11
8-750-032	CAT 40-Coolant-II	60°	0.590	0.394	0.512	0.157	2.250	1.266	.990	5/8 - 11
8-750-034	CAT 40-Coolant-III	90°	0.590	0.394	0.512	0.157	2.250	1.266	.990	5/8 - 11
8-750-036	CAT 50-Coolant-I	45°	0.906	0.669	0.827	0.197	3.346	1.772	1.378	1 - 8
8-750-038	CAT 50-Coolant-II	60°	0.906	0.669	0.827	0.197	3.346	1.772	1.378	1 - 8
8-750-040	CAT 50-Coolant-III	90°	0.906	0.669	0.827	0.197	3.346	1.772	1.378	1 - 8
8-750-044	CAT 50-ANSI-C	45°	1.140	0.820	0.820	0.197	2.300	1.000	.700	1 - 8



### BT Solid

Part Number	Type	A	D	d1	d2	d3	L	I1	I2	T
8-750-402	BT 30 - 45° Metric, Solid	45°	16.5	11	7	12.5	43	23	18	M12
8-750-404	BT 40 - 45° Metric, Solid	45°	23	15	10	17	60	35	28	M16
8-750-410	BT 50 - 45° Metric, Solid	45°	38	23	17	25	85	45	35	M24
8-750-412	BT 30 - 60° Metric, Solid	60°	16.5	11	7	12.5	43	23	18	M12
8-750-414	BT 40 - 60° Metric, Solid	60°	23	15	10	17	60	35	28	M16
8-750-416	BT 50 - 60° Metric, Solid	60°	38	23	17	25	85	45	35	M24
8-750-418	BT 30 - 90° Metric, Solid	90°	16.5	11	7	12.5	43	23	8	M12
8-750-420	BT 40 - 90° Metric, Solid	90°	23	15	10	17	60	35	28	M16
8-750-422	BT 50 - 90° Metric, Solid	90°	38	23	17	25	85	45	35	M24

### BT Coolant

Part Number	Type	A	D	d1	d2	d3	d4	L	I1	I2	T
8-750-426	BT 40 - 45° Metric, Coolant	45°	23	15	10	17	4	60	35	28	M16
8-750-428	BT 40 - 60° Metric, Coolant	60°	23	15	10	17	4	60	35	28	M16
8-750-430	BT 40 - 90° Metric, Coolant	90°	23	15	10	17	4	60	35	28	M16
8-750-432	BT 50 - 45° Metric, Coolant	45°	38	23	17	25	5	85	45	35	M24
8-750-434	BT 50 - 60° Metric, Coolant	60°	38	23	17	25	5	85	45	35	M24
8-750-436	BT 50 - 90° Metric, Coolant	90°	38	23	17	25	5	85	45	35	M24



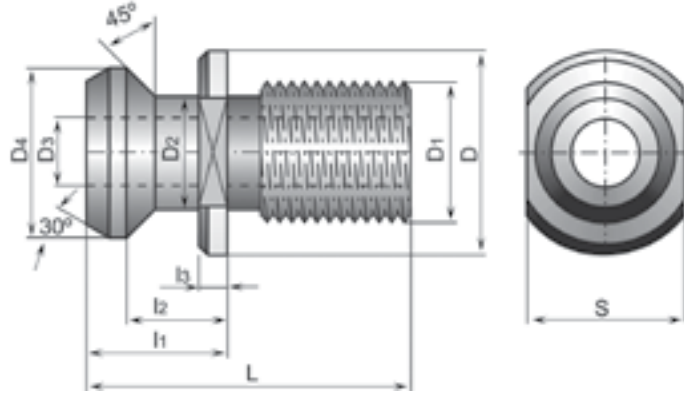
# Retention Knobs

Tooling Systems

## Retention Knobs

- Through the spindle coolant capability

**MADE IN POLAND**



RETENTION KNOBS

Supplier Model # 9886

Taper Size	Part Number	Thread D1	D	D2	D3	D4	L	I1	I2	I3	S
CAT 40	8-750-P905	5/8 - 11UNC	.898	.492	.280	.744	1.496	.640	.437	.118	.748
CAT 50	8-750-P950	1 x 8	1.400	.823	.500	1.146	2.244	1.000	.700	.197	1.185
HAAS 40	8-750-P941	5/8 - 11UNC	.875	.394	.118	.591	2.299	1.260	.984	.236	.748





## CONTENTS



90



91



91



92



92



93



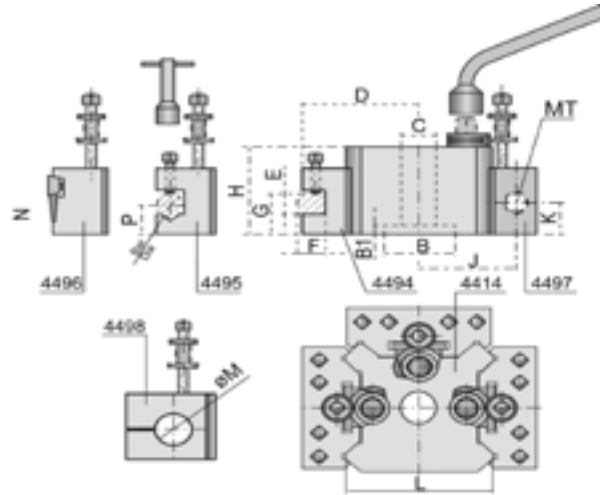
93

- 90 Quick Change Toolposts
- 91 Solid Sockets with MT Hole
- 91 Right Hand Nuts
- 92 Solid Spacers with Keyways
- 92 Running Bushings
- 93 Drill Drifts, Hardened and Zinc Plated
- 93 Universal HV CNC Tool Tightening Fixtures



## Quick Change Toolposts

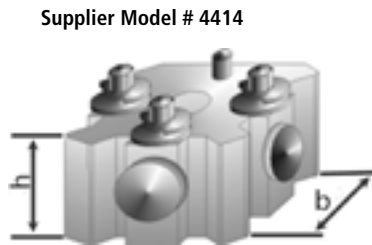
- Easy to set up on the lathe
- Three different quick change tool holders can be mounted on the toolpost



### Principal Dimensions

Toolpost Size	H	B	B1	C	D	E	F	G max	G min	Bar Dia	P max	P min	MT	J	K max	K min	L	N	M
T.2	2.81	1.75	.315	1.00	2.93	.748	.748	2.07	1.44	.748	1.81	.945	2	2.56	1.87	1.06	3.82	1.32	1.00
T.2.T	2.99				3.31	1.00	2.30	1.56	1.97		2.76			2.01	4.17				
T.3	3.76	2.00	.386		4.00	1.24	1.00	2.93	2.01	1.00	2.01	1.12	3	3.37	2.29	1.44	4.94	1.56	1.50

## Toolpost Sets and Individual Tool Holders



Supplier Model # 4414

Supplier Model # 4494

Supplier Model # 4495

Supplier Model # 4496

Supplier Model # 4497



Our full selection of tool holders and boring bars can be found in the 2015 TMX Cutting Tool catalog

Tool Set	Part Number	Set Part Number	Lathe Capacity	Description	b x h	MT Hole	d	Hole Dia D	Wt lbs	
T.2	8-656-9482	8-656-01T2	5" to 8"	T and F, Type 4494	3.88 x 1.97	-	-	-	2.20	
	8-656-9582			V-Grove, Type 4495	-	-	.748	-		
	8-656-9782			MT, Type 4497	-	2	-	-		2.65
	8-656-9882			B. Bar, Type 4498	-	-	-	1.00		3.31
T.2.T	8-657-0T2T	8-657-1T2T	5" to 8"	Tool Post, Type 4414	3.23 x 3.00	-	-	-	12.8	
	8-657-9582			V-Grove, Type 4495	-	-	.748	-		
	8-657-9782			MT, Type 4497	-	2	-	1.00		2.65
T.3	8-658-00T3	8-658-01T3	8" to 11.5"	Tool Post, Type 4414	3.94 x 3.62	-	-	-	24.0	
	8-658-9410			T and F, Type 4494	4.88 x 2.76	-	-	-		4.40
	8-658-9510			V-Grove, Type 4495	-	-	1.00	-		
	8-658-9610			Cut Off, Type 4496	4.88 x 2.76	-	-	-		5.51



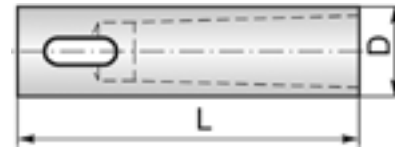
**MADE IN POLAND**

## Solid Sockets with MT Hole

- Sockets are made of Alloy Forged Steel for a long durable service life
- Morse taper seat T.I.R. <0.0004"
- Hardened to RC 56-60 and ground to ensure maximum accuracy

Supplier Model #1875

Socket Number	MT Hole	Part Number	OAL L	OD D
1	1	8-532-005	3-1/2	1
2		8-532-010		1-1/4
3		8-532-015		1-1/2
4	2	8-532-020	4	1
5		8-532-025		1-1/4
6		8-532-030		1-1/2
7		8-532-035		1-3/4
8		8-532-040		2
9	3	8-532-045	4-3/4	1-1/4
10		8-532-050		1-1/2
11		8-532-055		1-3/4
12		8-532-060		2
13	4	8-532-065	6	1-1/2
14		8-532-070		1-3/4
15		8-532-075		2
16	5	8-532-080	7-3/8	2-1/4
17		8-532-085		2-1/2
18	6	8-532-090	10-1/8	3-1/4
19		8-532-095		3-1/2



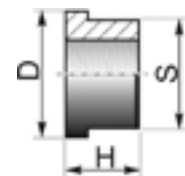
ACCESSORIES

## Right Hand Nuts

**MADE IN POLAND**

- RH nuts are hardened with a ground thread and shoulder
- To be used with milling machine arbors

Arbor Dia	Part Number	Thread Size	Height H	Flat S	OD D
7/8	8-800-605R	7/8 - 14RH	0.75	1-1/8	1.38
1	8-800-610R	1-14RH	0.88	1-1/4	1.62
1-1/4	8-800-615R	1-1/4 - 12RH			
1-1/2	8-800-620R	1-1/2 - 12RH	1.31	1-13/16	2.10
2	8-800-625R	2 - 12RH	1.75	2-3/8	2.72
2-1/2	8-800-603R	2-1/2 - 12RH			





# Accessories & Specials

Tooling Systems

ACCESSORIES

## Solid Spacers with Keyways

**MADE IN POLAND**



- Spacers are hardened and have parallel and perpendicular surfaces precisely ground to ensure precise operation of cutters on milling machine arbors

Width of Spacer b	d = 7/8 D = 1-3/8 Part Number	d = 1 D = 1-1/2 Part Number	d = 1-1/4 D = 1-3/4 Part Number	d = 1-1/2 D = 2-1/8 Part Number	d = 2 D = 2-3/4 Part Number
1/16	8-825-0005	8-825-0090	8-825-0175	8-825-0260	–
3/32	–	8-825-0095	–	8-825-0265	–
1/8	8-825-0015	8-825-0100	8-825-0185	8-825-0270	8-825-0325
3/16	–	8-825-0105	8-825-0190	–	8-825-0330
1/4	–	8-825-0110	8-825-0195	8-825-0280	8-825-0335
5/16	–	–	8-825-0200	8-825-0285	–
3/8	8-825-0035	8-825-0120	8-825-0205	8-825-0290	8-825-0340
7/16	–	–	–	–	–
1/2	8-825-0045	8-825-0130	8-825-0215	8-825-0295	8-825-0345
5/8	8-825-0050	8-825-0135	–	–	–
3/4	–	8-825-0140	8-825-0225	8-825-0300	8-825-0350
7/8	–	–	–	–	–
1	8-825-0065	8-825-0150	8-825-0235	8-825-0305	8-825-0355
1-1/4	–	–	8-825-0240	8-825-0310	–
1-1/2	–	–	–	–	–
2	8-825-0080	8-825-0165	8-825-0250	8-825-0315	–
3	–	8-825-0170	8-825-0255	8-825-0320	–
<b>Width of keyway</b>	<b>1/8</b>	<b>1/4</b>	<b>5/16</b>	<b>3/8</b>	<b>1/2</b>



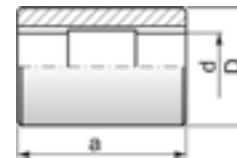
## Running Bushings

**MADE IN POLAND**

- Bushings are hardened and have parallel and perpendicular surfaces precisely ground to ensure maximum holding power, rigid setup, and accurate machining operations
- Bushings have standard keyways which allow fixed mounting on milling machine arbor and prevent rotation



OD of bushing D	Part Number	Hole Dia d	Length of Bushing a	Width of Keyway
1-5/8	8-825-1010	1	2-5/8	1/4
1-7/8	8-825-1015	1-1/4	2-5/8	5/16
	8-825-1025	1	3-1/8	1/4
	8-825-1030	1-1/4		5/16
2-1/8	8-825-1040	1	3-3/4	1/4
	8-825-1045	1-1/4		5/16
	8-825-1050	1-1/2		3/8
	8-825-1060	1		1/4
2-3/4	8-825-1065	1-1/4	4-1/4	5/16
	8-825-1070	1-1/2		3/8
	8-825-1075	2		1/2





## Drill Drifts, Hardened and Zinc Plated

- Used for removing MT shanks from MT sleeves or spindles
- Use drill drift size #1 for MT 1, size #2 for MT2, etc.
- Fully drop forged



Size	Part Number	H	Length L	Fits MT Sockets and Sleeves Number
1	8-840-1001	.80	4.6	1
2	8-840-1002		5.6	2
3	8-840-1003	1.0	6.2	3
4	8-840-1004	1.25	7.0	4-5-6
Set of 4	8-840-1010	Set of 4		1-6

## Universal H/V CNC Tool Tightening Fixtures

- Multiple usage on tool holder tapers NMTB/NST, ISO, CAT, BT, and DIN
- Efficiently designed for maximum protection of tool holder
- Enables strong gripping power of cutting tools in horizontal and vertical positions
- Light weight and compact design for mounting on work table or tool cart

Taper Size	Part Number	H (in)	L (in)	W (in)
CAT/BT 30	8-890-0730	4.25	7.09	3.73
CAT/BT 40	8-890-0740	4.25	7.09	3.73
CAT/BT 50	8-890-0750	5.91	9.84	4.72









## CONTENTS

- 96 Index By Product Group
- 98 TMX Made In Poland Supplier  
Model # Cross Reference
- 100 Part Number Conversion 7s to 8s



# Index

Tooling Systems

INDEX

## Index By Product Group

Product Group & P/N Prefix	Description	Page #
8-100	CAT Collet Holders, ER	16
8-102	CAT Collet Holders, DA, TG, others	6
8-110	CAT End Mill Holders	8
8-120	CAT Shell Mill Holders	12
8-122	CAT Face Mill Holders	14
8-130	CAT Integral Shank Drill Chucks	14
8-132	CAT Jacobs Taper Holders	15
8-136	CAT V-Flange MT Adapters	15
8-140	CAT Tap Holders	18
8-145	CAT Rigid Tap Holders	18
8-147	CAT Tension/Compression Tap Holders	19
8-162	CAT Saw Arbors	16
8-200	BT Collet Holders, ER	22
8-202	BT Collet Holders, DA, TG, others	23
8-210	BT End Mill Holders, NEW Style, AD/B	25
8-220	BT Shell Mill Holders, NEW Style, AD/B + C	27
8-230	BT Flange Drill Chucks	24
8-232	BT Jacobs Taper Holders, NEW	28
8-240	BT Tap Holders	29
8-245	BT Rigid Tap Holders	29
8-247	BT Tension/Compression Tap Holders	29
8-300	NMTB Collet Chucks	32
8-302	NMTB DA & TG Collet Chucks	32
8-310	NMTB End Mill Holders	34
8-320	NMTB Shell End Mill Holders	35
8-322	NMTB Face Mill Holders	36
8-330	NMTB Keyless Drill Chucks	36
8-332	NMTB Drill Chuck Arbors, NMTB to JT	36
8-360	Milling Machine Arbors	38
8-400	HSK ER Collet Holders	42
8-410	HSK End Mill Holders	42

*continued on next page*



## Index by Product Group (continued)

<b>Product Group &amp; P/N Prefix</b>	<b>Description</b>	<b>Page #</b>
8-500	R8 Collet Chucks	44
8-501	MT Collet Chucks	50
8-502	Straight Collet Holders, ER	63
8-510	R8 End Mill Holders	45
8-511	MT End Mill Holders	51
8-520	R8 Shell Mill Arbors	46
8-521	MT Shell Mill Arbors/Shell Reamer Arbors	46
8-522	Straight Shell Mill Holders/ Shell Reamer Arbors	59
8-530	R8 Drill Chuck Arbor Adapters	46
8-531	MT Drill Chuck Arbors, MT to JT	55
8-532	Straight Drill Chuck Arbors, Straight to JT	60
8-543	Straight Rigid Tapping Chucks with Straight Shank	60
8-544	Tension & Compression Tapping Chucks with Straight Shank	61
8-560	R8 Misc Arbors	47
8-561	MT Misc Arbors	54
8-562	Straight Misc Arbors	61
8-600	Keyless Drill Chucks	66
8-650	Quick Change Toolposts & Holders	90
8-700	ER Collets	70
8-701	ER Collets Sealed	72
8-702	ER Jetstream Collets	73
8-703	TG Collets	75
8-704	DA Collets	76
8-705	5C Collets	77
8-708	R8 Collets	78
8-716	16C Collets	79
8-720	Tap Adapters	83
8-750	Retention Knobs	86
8-825	Spacers	92
8-840	Drill Drifts	93



# Index

Tooling Systems

INDEX

## TMX Made In Poland Supplier Model # Cross Reference

Supplier Model Number	Product Group & P/N Prefix	Description	Page #
1640	8-336	NMTB to R8 Adapter	37
1650	8-336	NMTB 50 to 40	37
1657	8-336	NTMB to MT Adapter	37
1684	8-136	CAT 50 to CAT 40 Adapter	16
1691	8-136	CAT V-Flange MT Adapters	15
1751	8-531	MT Taper Sleeves, Regular Length	53
1762	8-531	MT Taper Sleeves, Extension Length	53
1855	8-530	R8 Drill Chuck Arbors, R8 to MT	46
1875	8-532	Solid Sockets with MT Hole	91
2842	8-522	MT Face Mill Holder	52
4414	8-650	Quick Change Toolposts & Holders	90
4494	8-650	Quick Change Toolposts & Holders	90
4495	8-650	Quick Change Toolposts & Holders	90
4496	8-650	Quick Change Toolposts & Holders	90
4497	8-650	Quick Change Toolposts & Holders	90
5275	8-562	Straight Floating Reamer Holders	61
5310	8-521	MT Shell Reamer Arbors	52
5312	8-522	Straight Shell Reamer Arbors	59
5353	8-532	Straight Drill Chuck Arbors, Straight to JT	60
5355	8-530	R8 Drill Chuck Arbors, R8 to JT	46
5362	8-531	MT Drill Chuck Arbors, MT to JT	55
5370	8-332	NMTB Drill Chuck Arbors, NMTB to JT	36
7020	8-562	Straight Stub Milling Machine Arbors	63
7170	8-360	Milling Machine Arbors	38
7311	8-320	NMTB Shell End Mill Holders	35
7318	8-162	CAT Stub Arbor Holders	16
7349	8-322	NMTB Face Mill Holders	36
7374	8-162	CAT Slitting Saw Holders	17
7382	8-122	CAT Face Mill Holders	14
7411	8-521	MT Shell Mill Holders with Tanged Arbors	50
7470	8-531	MT Drill Chuck Arbors, MT to Threaded	54

*continued on next page*



## TMX Made In Poland Supplier Model # Cross Reference (continued)

Supplier Model Number	Product Group & P/N Prefix	Description	Page #
7550	8-520	R8 Shell Mill Arbors	46
7560	8-560	R8 Slitting Saw Stub Mill Arbors	47
7614	8-102	CAT TG Collet Holders	7
7616	8-300	NMTB Collet Chucks	32
7619	8-202	BT TG Collet Chucks	23
7620	8-310	NMTB End Mill Holders	34
7640	8-302	NMTB TG Collet Chucks	32
7652	8-102	CAT DA Collet Holders	6
7655	8-130	CAT Integral Shank Drill Chucks	14
7656	8-230	BT Flange Drill Chucks	24
7657	8-330	NMTB Keyless Drill Chucks	36
7665	8-302	NMTB DA Collet Chucks	33
7711	8-501	MT ER Collet Chucks	50
7720	8-511	MT End Mill Holders, Style A Tanged	51
7721	8-511	MT End Mill Holders, Style B Draw Bar	51
7812	8-502	Straight Collet Holders, ER	63
7814	8-500	R8 ER Collet Chucks	44
7816	8-500	R8 TG Collet Chucks	45
7819	8-500	R8 TG Collet Chucks	44
7820	8-510	R8 End Mill Holders	45
9886	8-750	Retention Knobs	86



# Index

Tooling Systems

INDEX

## Part Number Conversion 7s to 8s

Original P/N Prefix	New P/N Prefix	Description	Page #
7-010	8-360	NST/NMTB Misc Arbors	38
7-015	8-360	NST/NMTB Misc Arbors	39
7-020	8-825	Arbor Spacers	92
7-025	8-825	Arbor Spacers	92
7-048	8-330	NMTB/NST Int Shank Drill Chuck Holders	36
7-050	8-521	MT Shell Mill Arbors	50
7-051	8-600	Keyless Drill Chucks	66
7-052	8-332	NST/NMTB to JT Drill Chuck Arbors	36
7-052	8-530	R8 to JT Drill Chuck Arbors	46
7-052	8-531	MT Drill Chuck Adapters (MT to JT)	55
7-052	8-532	Solid Sockets Hardened	91
7-060	8-320	NST/NMTB Shell Mill Holders	35
7-064	8-522	Straight Shell Mill Holders	59
7-065	8-520	R8 Shell Mill Arbors	46
7-070	8-560	R8 Misc Arbors	47
7-072	8-562	Straight Misc Arbors	61
7-100	8-336	Draw Bar Adapters, NST to MT	37
7-105	8-336	Draw Bar Adapters, NST to MT	37
7-110	8-336	Draw Bar Adapters, NST to MT	37
7-132	8-302	NST/NMTB TG Collet Chucks	32
7-150	8-511	MT End Mill Holders	51
7-155	8-511	MT End Mill Holders	51
7-160	8-510	R8 End Mill Holders	45
7-161	8-500	R8 Collet Chucks	44
7-164	8-716	16C Collets	79
7-165	8-310	NST/NMTB End Mill Holders	34
7-166	8-703	TG Collets	75
7-167	8-704	DA Collets	76
7-168	8-705	5C Collets	77
7-169	8-708	R8 Collets	78
7-170	8-322	Face Mill Holders w NST & MT Shanks	36, 52
7-171	8-300	NST/NMTB Collet Holders, ER	32

*continued on next page*



## Part Number Conversion 7s to 8s (continued)

Original P/N Prefix	New P/N Prefix	Description	Page #
7-171	8-501	MT Collet Chucks	50
7-171	8-502	Straight Collet Holders, ER	63
7-171	8-700	ER Collets	70
7-172	8-202	BT Collet Holders, TG	23
7-174	8-230	BT Integral Shank Drill Chuck Holders	24
7-175	8-232	BT Jacobs Taper Holders	28
7-176	8-220	BT Shell Mill Holders	27
7-178	8-200	BT Collet Holders, ER	22
7-179	8-210	BT End Mill Holders	25
7-180	8-102	CAT Collet Holders, DA, TG, others	6
7-181	8-132	CAT Integral Shank Drill Chuck Holders, JT	15
7-182	8-122	CAT Face Mill Holders	14
7-183	8-136	CAT V-Flange MT Adapters	15
7-185	8-110	CAT End Mill Holders	8
7-186	8-120	CAT Shell Mill Holders	12
7-187	8-130	CAT Integral Shank Drill Chuck Holders	14
7-188	8-100	CAT Collet Holders, ER	16
7-189	8-750	Retention Knobs	86
7-192	8-162	CAT Saw Arbors	16
7-192	8-830	CAT V-Flange Slitting Saw Holder	17
7-194	8-654	QC Toolposts & Holders, 114mm to 127mm	90
7-279	8-657	Quick Change Toolposts & Holders	90
7-305	8-400	HSK Collet Holders, ER	42
7-306	8-410	HSK End Mill Holders	42
7-338	8-147	CAT Tension/Compression Tap Holders	19
7-339	8-145	CAT V-Flange Rigid Tap Holders	18
7-340	8-722	Quick Chg Pos Drive Tap Adapters	82
7-341	8-725	Quick Chg Torque Cntrl Tap Adapters	83
7-343	8-543	Rigid Tapping Chucks, Cyl Shank.	60
7-451	8-840	Drill Drifts, Hardened & Zinc Plated	93
7-981	8-561	MT Misc Arbors	54





# Item Quick Find



**Tooling Systems**

	CAT	BT	NMTB	HSK	R8	MT	STRAIGHT
Adapter: Jacobs Taper	15	28	36	-	46	55	60
Adapter: Morse Taper	15	-	37	-	46	-	-
Annular Cutter Holders	-	-	-	-	47	54	63
Collet Chuck: DA (Double Angle)	6	-	33	-	45	-	-
Collet Chuck: ER	16	22	32	42	44	50	63
Collet Chuck: TG	7	23	32	-	44	-	-
Drill Chuck	14	24	36	-	-	55	-
End Mill Holder	8, 10	25	34	42	45	51	-
Face Mill Holder	14	-	36	-	-	52	-
Milling Machine Arbor	-	-	38, 39	-	-	-	63
Shell Mill/Face Mill Arbor Holder	12	27	35	-	46	50	59
Shell Reamer Arbor	-	-	-	-	-	52	59
Slitting Saw Holder	17	-	-	-	47	-	-
Stub Milling Arbor	16	-	-	-	47	-	-
Tap Holder: Rigid	18	29	-	-	-	-	60
Tap Holder: Tension/Compression	18	29	-	-	-	-	61



## ***Rotary Tool Holders***



### ***Tooling Systems***

***TMX Tooling Systems by Toolmex Industrial Solutions***

**TOOLMEX**  
*Industrial Solutions*

**AHB**  
**TOOLING & MACHINERY**

**COMPLETE  
METALWORKING  
SOLUTIONS**

**(800) 991-4225**

[www.ahbinc.com](http://www.ahbinc.com)

ISO Certified

[customerservice@ahbinc.com](mailto:customerservice@ahbinc.com)