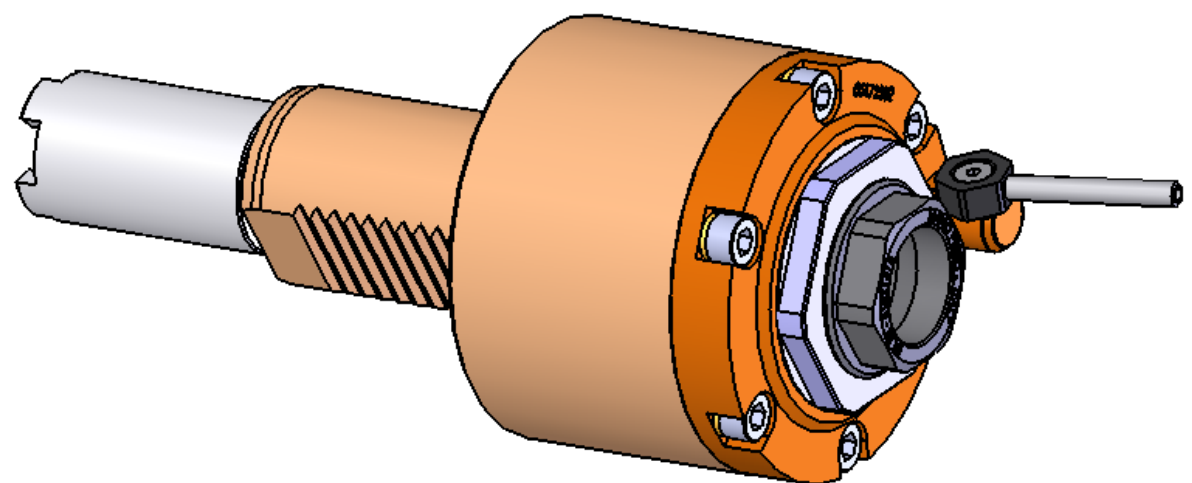
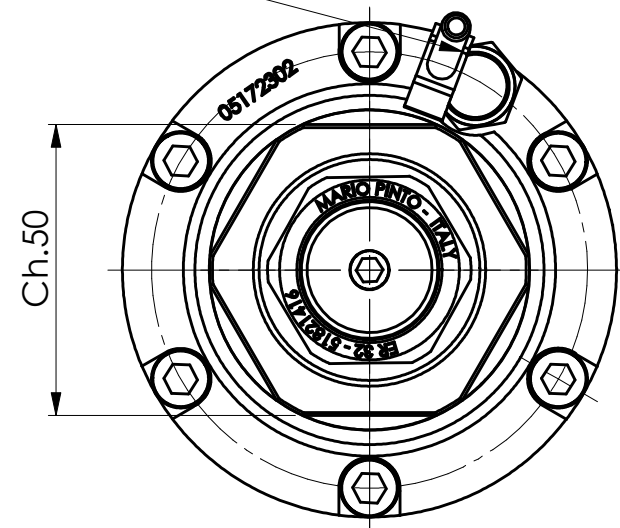
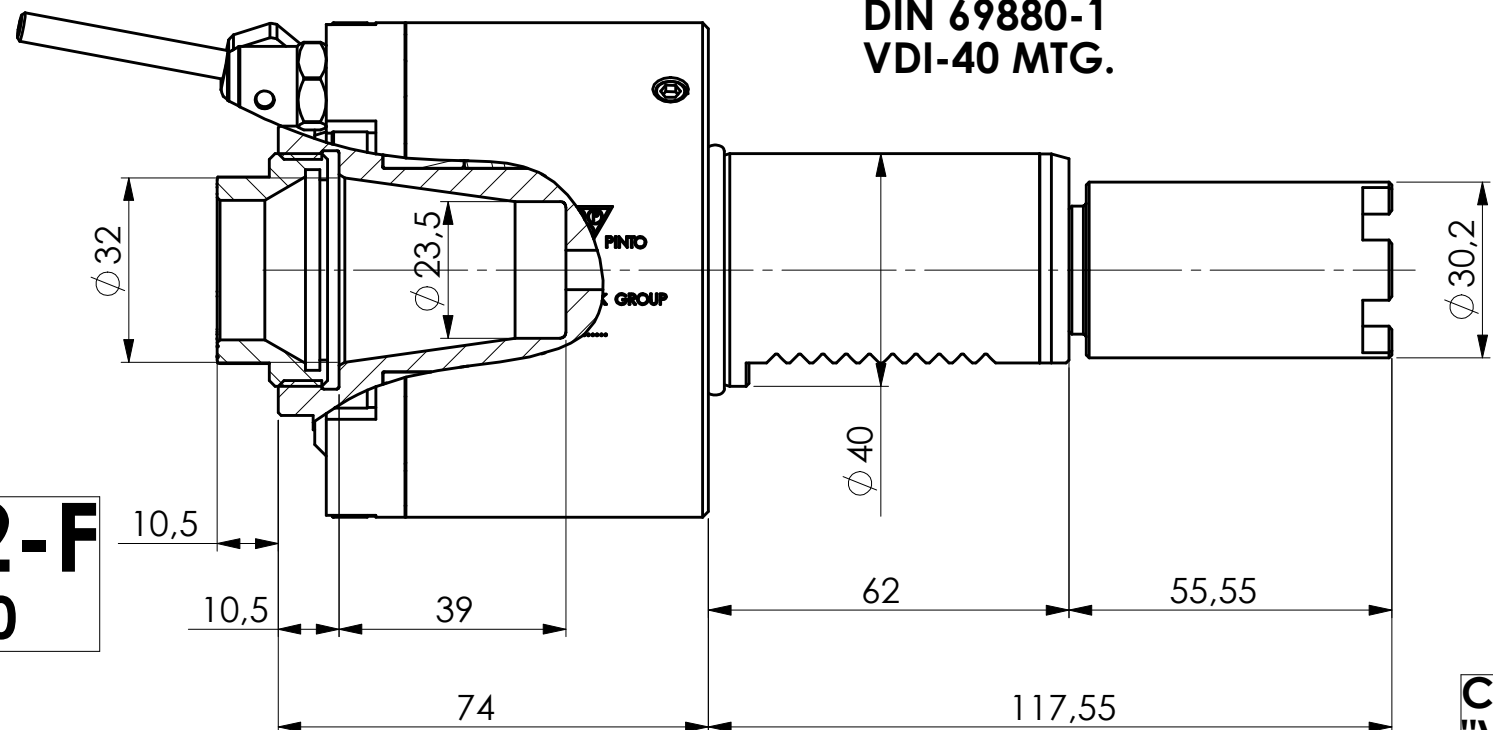


ENTRATA LIQUIDO REFRIGERANTE
COOLANT ENTRY

ATTACCO VDI-40
DIN 69880-1
VDI-40 MTG.

USCITA LIQUIDO REFRIGERANTE
COOLANT WAY-OUT

ER 32-F
Ø 3-20



CARATTERISTICHE TECNICHE
"Velocita' max 6000 RPM per 3 min"
Coppia max 63 N.m per 4 min
Rapporto 1:1
Modello DRITTO VDI-40
Tipo Pinza ER-32F

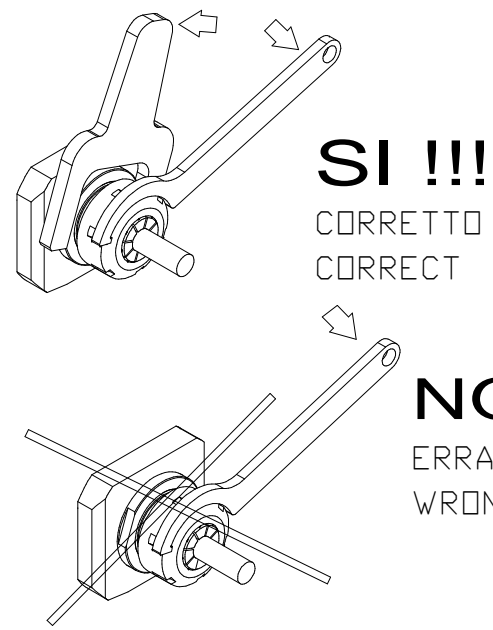
**HAAS
VB (HYBRID TURRET)
SL-20/30
TL-15/25**

TECHNICAL FEATURES
Max. speed 6000 min⁻¹ FOR 3 min
Max torque 63 N.m FOR 4 min
Ratio 1:1
Model AXIAL VDI40
Collet ER-32F

**HAAS
STANDARD VDI TURRET
SL-40
ST-20
DS-30 YSSY**

AXIAL TOOLHOLDER

Designazione/Description : **LT-S VDI40 ER32F H74/117 HA**



MARIO PINTO TORINO
SMW AUTOBLOK GROUP
LT-S VDI-40
ER 32F
H74/117 HA
05112000 R.....

SMW AUTOBLOK GROUP

PROPRIETA' RISERVATA - Il presente disegno e' di proprieta' della MARIO PINTO SpA e non potra' essere comunicato a terzi o riprodotto in tutto o in parte senza il consenso scritto della stessa.
NOTICE - This drawing is property of MARIO PINTO SpA ITALY and shall not be reproduced, duplicated or copied in whole or in part, nor shall it be released to others without the written permission of the owner.
Diese Zeichnung darf ohne schriftliche Genehmigung von MARIO PINTO SpA ITALIEN weder kopiert noch dritten Personen mitgeteilt werden

| | | | | | |
|--|-------------------------|---|---------------|--------------------|------------------|
| MARIO PINTO TORINO MARIO PINTO S.p.A. | | PORTAUTENSILE PER TORRETTE MOT DRITTO LT-S - ER32F - ATT VDI40 PER TORRETTA HAAS SL-20/30/40 TL-15/25 | | HAAS | |
| SCALE/SCALA A3 1:2 | DATE/DATA 27-09-2011 | DRAWN BY/DISEGN. TORAZZA | CHECKED/VISTO | N. | REVISED/MODIFICA |
| WEIGHT/PESO Raw Greggio | | Machined Finito 3.053 Kg | | ASSEMBLY/COMPLESS. | |
| THE COMPANY GUARDS ITS DRAWINGS ACCORDING TO THE LAW | | | | 05112000 | 05112000-R011 |