



MODULO



Could your business benefit from up to 40% reduction in waste?

MODULO can provide:

- 24/7 availability of items
- Substantial operational cost savings
- Optimized inventory levels
- Minimized production downtime

Modulo incorporates industry leading and award winning ToolBOSS™ technology to provide a higher capacity machine at a very competitive cost.



TOUCH SCREEN TECHNOLOGY

High quality, reliable, low cost 10 inch resistive screen or the standard 15 inch capacitive screen options available.



SECURE LOCATIONS

Up to 120 secure locations in a single frame managing 1,440 components, system can be expanded to manage up to 14,400 components.



EASY SCOOP DESIGN

“Easy Scoop” design of compartments in a drawer ensure a smooth retrieval of contents. Made from strong ABS plastic and housed in a steel frame, MODULO is a robust and reliable product.



ACCOUNTABILITY

The unique ToolBOSS™ software provides a complete audit trail on who, when, where, and why about the usage on any component within the systems.

AHB Tooling & Machinery, Inc.
 Complete Metalworking Solutions
 Roseville Saginaw & Jackson, MI

ISO Certified
 (800) 991-4225
 www.ahbinc.com
 customerservice@ahbinc.com





MODULO

Combined with our powerful ToolBOSS™ inventory management software the MODULO provides a high capacity solution to meet the unpredictable challenges of logistics and supply chain management.

CONFIGURABLE

MODULO can be configured to provide different size drawers and compartments. Up to 10 MODULO frames/machines can be connected to provide 1,200 locations.

UNIQUE MANUAL OVERRIDE FACILITY

In an ideal world a manual override would never be needed, but if required MODULO, ensures 24/7 availability with a unique front accessible manual override capability, which is simple and easy to use and requires no tools. The override can be selectively activated allowing access only to the required items.

FUTURE-PROOF

MODULO incorporates a USB interface and a DCS expansion port for use with RFID and other similar ancillary equipment.

DRAWER OPTIONS

MODULO currently supports three different drawer sizes. Additional sizes may be available on request.

HIGH SPEED ACCESS

Rapid search and selection of items via the ToolBOSS™ software is further enhanced with a complete LED identification system which guides users directly to the drawer containing their items.

COMPATIBILITY

The MODULO is fully compatible with all existing ToolBOSS™ machines running V3.1 or greater of the software.

SECURITY

Access to the contents of items in the MODULO can be restricted by the use of: user name, password, biometric identification, card readers, or a combination of these options. The drawer locks are of a high strength and cannot be forced open in normal or aggressive use without the assistance of tools. The items held within the MODULO are hidden from view and can be randomly distributed around the machine, reducing the risk of the unauthorized removal of contents.

EFFICIENCY

Multiple drawers can be selected in one transaction minimizing the time required to manage large volumes of stock.

USER INTERFACE

Two user interfaces are available, a low cost 10" resistive screen and the standard 15" capacitive screen provide competitive price levels to meet demanding budgets.

SPECIFICATION

Capacity

120 locations (max)
1440 compartments (max)

Dimensions (D x W x H)

510 x 545 x 2000 mm
20.1 x 21.5 x 78.7 inches

Construction

Steel frame
ABS plastic drawers

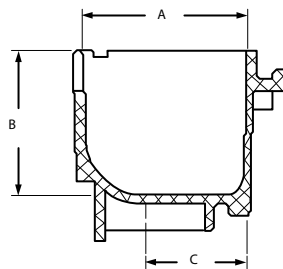
User Interface

10 inch Resistive touchscreen

or

15 inch Standard capacitive touchscreen

DRAWER DIMENSIONS



Drawer	A		B		C	
	mm	in	mm	in	mm	in
1 x 1	47.5	1.8	41.5	1.6	29	1
2 x 1	120	4.7	41.5	1.6	118	4.6
3 x 2	194	7.6	96	3.7	181	7.1

DRAWER OPTIONS

Drawer type	No. of compartments	Drawers per POD
1 x 1 type drawer	12	24
2 x 1 type drawer*	12 or 6	12
3 x 2 type drawer*	12 or 6	4

* Please contact office for availability