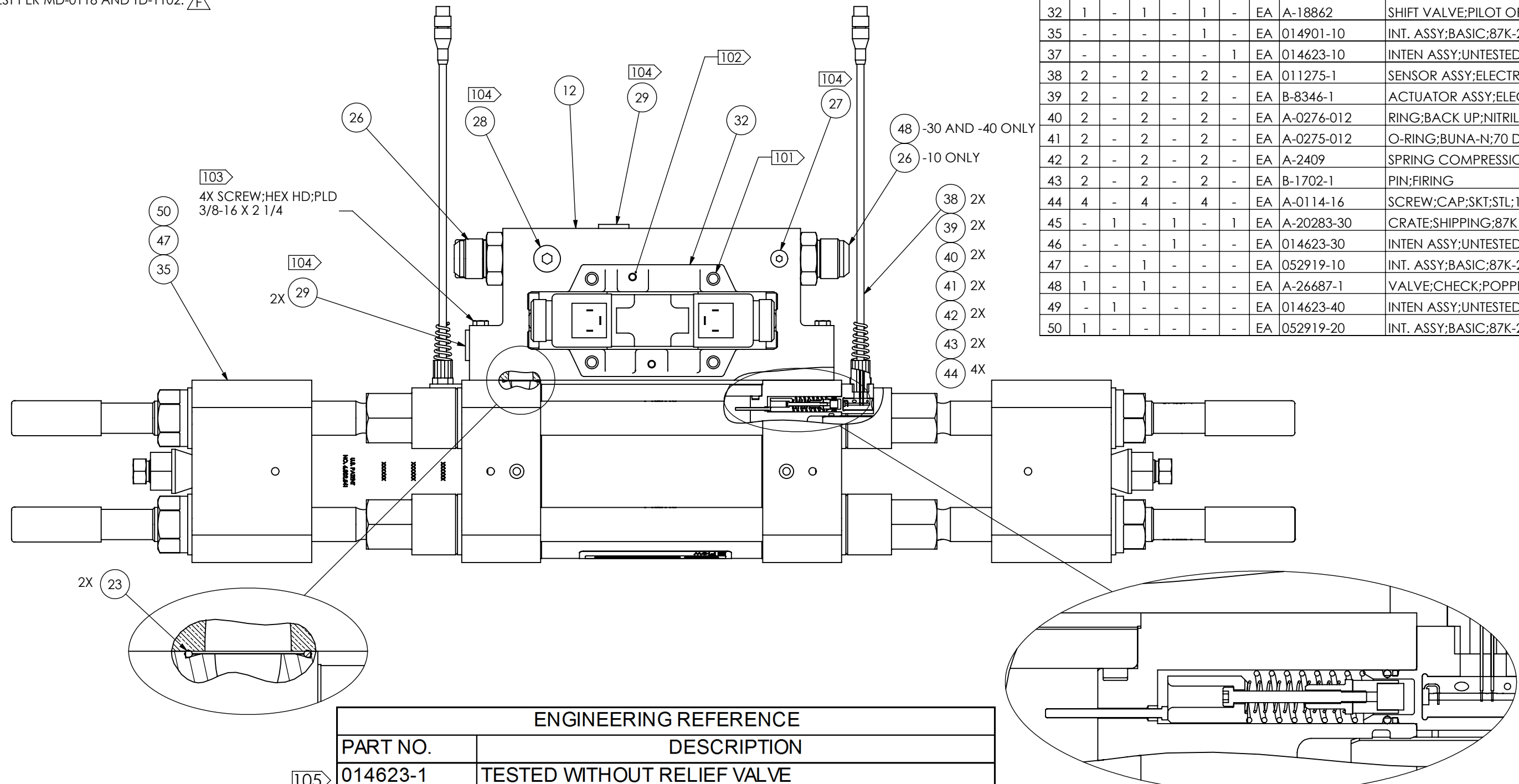


NOTES:

- 101 TORQUE RANGE: 55 FT/LBS.
- 102 TORQUE RANGE: 138 IN/LBS.
- 103 TORQUE RANGE: 25-30 FT/LBS.
- 104 USE LOCKTITE 545 ON THREADS.
- 105 TEST PER MD-0118 AND TD-1102.

ITEM	-40	-4	-30	-3	-10	-1	U/M	PART NUMBER	DESCRIPTION
12	1	-	1	-	1	-	EA	013403-1	MANIFOLD;SINGLE INTENSIFIER
23	2	-	2	-	2	-	EA	A-00633-023	O-RING;90 DUR;BUNA-N;1.051 ID
26	1	-	1	-	2	-	EA	A-0636-23	CONNECTOR;STR THD;STL;1" OD
27	1	-	1	-	1	-	EA	A-0641-3	PLUG;HOLLOW HEX;STR HD;1/4"OD
28	1	-	1	-	1	-	EA	A-0641-6	PLUG;HOLLOW HEX;STR HD;1/2" OD
29	3	-	3	-	3	-	EA	A-0641-7	PLUG;HOLLOW HEX;STR HD;5/8" OD
32	1	-	1	-	1	-	EA	A-18862	SHIFT VALVE;PILOT OPERATED
35	-	-	-	-	1	-	EA	014901-10	INT. ASSY;BASIC;87K-2.0;UNTES
37	-	-	-	-	-	1	EA	014623-10	INTEN ASSY;UNTESTED;87K-2.0
38	2	-	2	-	2	-	EA	011275-1	SENSOR ASSY;ELECTRIC SHIFT;24V
39	2	-	2	-	2	-	EA	B-8346-1	ACTUATOR ASSY;ELECTRONIC SHIFT
40	2	-	2	-	2	-	EA	A-0276-012	RING;BACK UP;NITRILE;.390 DIA
41	2	-	2	-	2	-	EA	A-0275-012	O-RING;BUNA-N;70 DUR;NO.2-012
42	2	-	2	-	2	-	EA	A-2409	SPRING COMPRESSION;P/N CO480-0
43	2	-	2	-	2	-	EA	B-1702-1	PIN;FIRING
44	4	-	4	-	4	-	EA	A-0114-16	SCREW;CAP;SKT;STL;10-32;1
45	-	1	-	1	-	1	EA	A-20283-30	CRATE;SHIPPING;87K INT;SHT BLK
46	-	-	-	1	-	-	EA	014623-30	INTEN ASSY;UNTESTED;87K-2.0
47	-	-	1	-	-	-	EA	052919-10	INT. ASSY;BASIC;87K-2.0;UNTES
48	1	-	1	-	-	-	EA	A-26687-1	VALVE;CHECK;POPPET;STL;1 5/16-12
49	-	1	-	-	-	-	EA	014623-40	INTEN ASSY;UNTESTED;87K-2.0
50	1	-	-	-	-	-	EA	052919-20	INT. ASSY;BASIC;87K-2.0;UNTES



ENGINEERING REFERENCE		
PART NO.	DESCRIPTION	
105 014623-1	TESTED WITHOUT RELIEF VALVE	
014623-10	UNTESTED WITHOUT RELIEF VALVE	
105 014623-3	TESTED WITHOUT RELIEF VALVE	
014623-30	UNTESTED WITHOUT RELIEF VALVE	
105 014623-4	TESTED (FOOD GRADE) WITHOUT RELIEF VALVE	
014623-40	UNTESTED (FOOD GRADE) WITHOUT RELIEF VALVE	

THIRD ANGLE PROJECTION

Flow INTERNATIONAL CORPORATION AND IS NOT TO BE COPIED OR REPRODUCED WITHOUT THE WRITTEN CONSENT OF FLOW INTERNATIONAL CORPORATION.

MATERIAL SEE BOM

DRAWN BY K.MADDEN	STARTED 4/30/2003	ENG J.HOPKINS	EST WEIGHT N/A	MODELED IN SOLIDWORKS
----------------------	----------------------	------------------	-------------------	--------------------------

TITLE **INTENSIFIER ASSY;87 KSI;LONG BLOCK**

REVISION G	SCALE 1:3.5	BASE PART NUMBER	014623	1 OF 1
---------------	----------------	------------------	---------------	--------