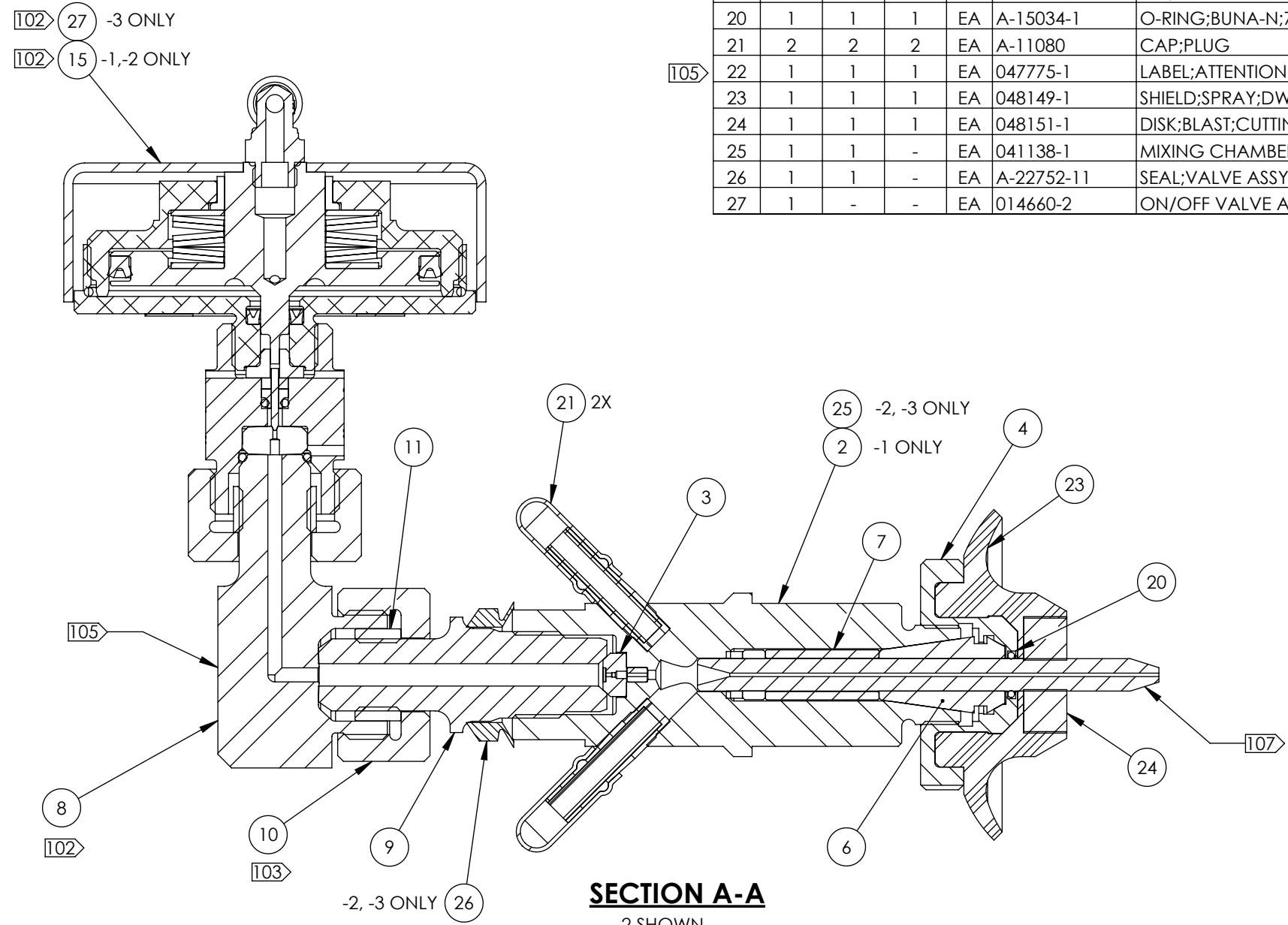
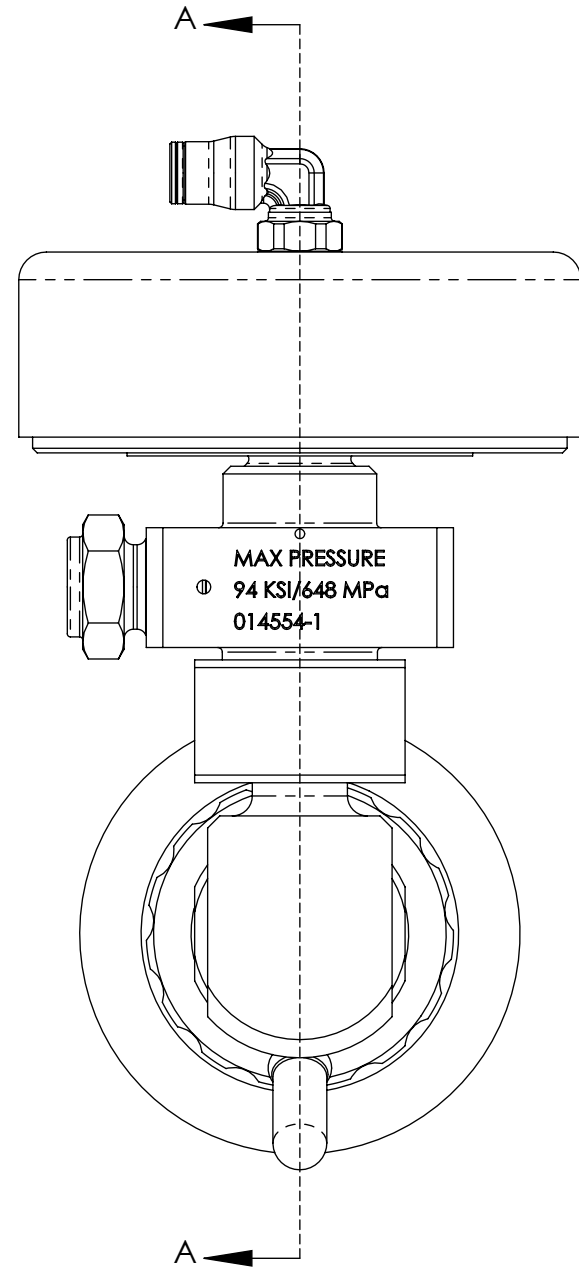


NOTES:

- [102] APPLY AIR PRESSURE OF 60 PSI MINIMUM BEFORE TIGHTENING HP ELBOW (ITEM 8) TO THE ACTUATOR (ITEM 15 OR 27). TORQUE TO 35-40 FT/LBS.
- [103] TORQUE TO 35- 40 FT/LBS.
- 104. APPLY BLUE LUBE TO ALL THREADS.
- [105] ATTACH LABEL TO NOZZLE BODY AT TIME OF MANUFACTURE - TO BE REMOVED BEFORE USE.
- [107] ITEM SHOWN AS REFERENCE ONLY. MIXING TUBE (1000003-XX-XX) NOT SUPPLIED WITH ASSEMBLY. ⚠

ITEM	-3	-2	-1	U/M	PART NUMBER	DESCRIPTION
2	-	-	1	EA	020694-1	MIXING CHAMBER ASSY;87K;DYNAMIC
3	1	1	1	EA	041760-1	MOUNT;MACH 4;ORIFICE
4	1	1	1	EA	711589-1	NOZZLE NUT;DYNAMIC WATERJET
6	1	1	1	EA	710806-1	COLLET;NOZZLE;PRECISION
7	1	1	1	EA	712265-1	SPACER;CYL;MIXING TUBE;PASER ECL;SST
8	1	1	1	EA	044866-1	HP ELBOW;ON/OFF VALVE ADAPTER
9	1	1	1	EA	044837-1	NOZZLE BODY;SHORT
10	1	1	1	EA	710867-1	GLAND; 60K MINI VALVE
11	1	1	1	EA	710869-1	COLLAR; WATER BODY
15	-	1	1	EA	014660-1	ON/OFF VALVE ASSY;LOW PROFILE
20	1	1	1	EA	A-15034-1	O-RING;BUNA-N;70A;1.5 X 7 MM ID
21	2	2	2	EA	A-11080	CAP;PLUG
[105] 22	1	1	1	EA	047775-1	LABEL;ATTENTION
23	1	1	1	EA	048149-1	SHIELD;SPRAY;DWJ;PUR;YEL
24	1	1	1	EA	048151-1	DISK;BLAST;CUTTING HD;25 MM OD
25	1	1	-	EA	041138-1	MIXING CHAMBER ASSY; PASER4
26	1	1	-	EA	A-22752-11	SEAL;VALVE ASSY;LOW PROFILE
27	1	-	-	EA	014660-2	ON/OFF VALVE ASSY;LOW PROFILE



SECTION A-A
-2 SHOWN

ENGINEERING REFERENCE		
DASH NO.	DESCRIPTION	REF. AIR LINE
-1	DYNAMIC MIXING CHAMBER	6MM
-2	PASER 4 MIXING CHAMBER	6MM
-3	PASER 4 MIXING CHAMBER, M4C XD	4MM



COMPLETE METALWORKING SOLUTIONS
 (800) 991-4225
 www.ahbinc.com
 ISO Certified
 customerservice@ahbinc.com

THIRD ANGLE PROJECTION		THIS DRAWING IS THE PROPERTY OF FLOW INTERNATIONAL CORPORATION AND IS NOT TO BE COPIED OR REPRODUCED WITHOUT THE WRITTEN CONSENT OF FLOW INTERNATIONAL CORPORATION.		
DRAWN BY R.MANN		STARTED 9/13/2012	ENG S.SCHRAMM	EST WEIGHT N/A
TITLE CUTTING HEAD ASSY;ABR JET;XD WRIST				
REVISION J	SCALE 1:1.25	BASE PART NUMBER	045160	1 OF 1