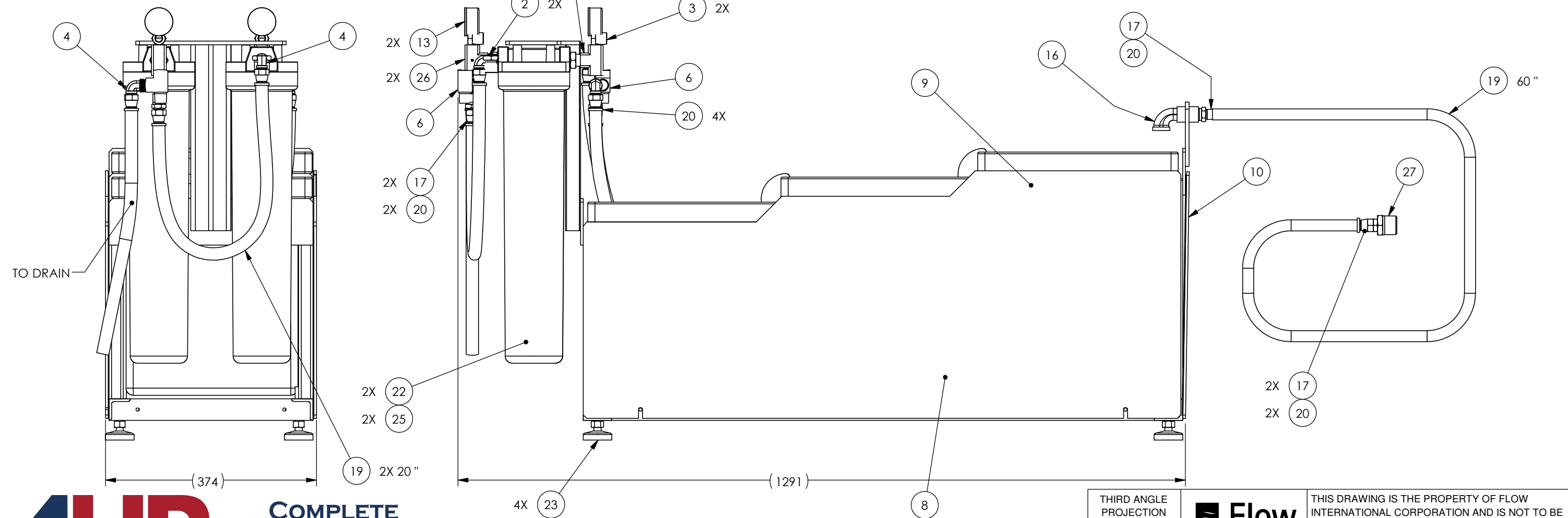


NOTES:

101 ITEM NOT SHOWN

8X M8 X 1.25 BHCS X 25 LONG, SST

TAP MOUNTAIN BOSES IN FILTER HEAD WITH M8 X 1.25 TAP



ITEM	QTY	U/M	PART NUMBER	DESCRIPTION
101	1	EA	202719-24	REDUCER;HEX;IRON;GALV;1 1/2NPT;1/2NPT
2	2	EA	A-0656-13	REDUCER;HEX;BRS;3/4NPT;1/2NPT
3	2	EA	A-0656-8	REDUCER;HEX;BRS;1/2NPT;1/4NPT
4	4	EA	A-00049-15	ELBOW;90D;BRS;-8 JIC;1/2NPT
6	2	EA	A-7293	TEE;ST;BRS;1/2NPT;1/2NPT
7	1	EA	A-19737-1	PUMP;CENTRIFUGAL;10PSI;1550 RPM
8	1	EA	020213-1	FRAME WELDMENT;WASTEWATER FILTER
9	1	EA	R34025-4B	COVER ASSY;SIDE;WASTEWATER FILTER
10	1	EA	R34026-4B	COVER ASSY;END;WASTEWATER FILTER
12	2	EA	R34975-4	TANK;MOD;WEIR
13	2	EA	A-10489-2	GAUGE;LOWER MT;15KSI;GLYCERIN;2 IN
15	1	EA	A-19665-1	TANK;PET;7 GAL;12X12X12 IN
16	1	EA	A-0676-4	ELBOW;BANDED;90D;IRON;GALV;1/2NPT;1/2NPT
17	5	EA	A-00044-17	ADAPTER;HEX;BRS;-8 JIC;1/2NPT
18	2	EA	A-0665-13	NIPPLE;HEX;BRS;3/4NPT;1/2NPT;1.96 IN LG
19	144	IN	A-0796-3	HOSE;PUSH-LOK;RBR;GRA;200 PSI;1/2 IN
20	9	EA	A-0817-5	ADAPTER;PUSHLOK;SWVL;BRS;1/2 IN;-8 JIC
22	2	EA	A-10112-3	FILTER HOUSING;ECONOMY;20 IN LG
23	4	EA	A-9518-2	LEVELING PAD;1/2-13;2 IN;700 LBS
25	2	EA	A-00750-6	FILTER ELEMENT;50 MIC;20 IN LG
26	2	EA	A-7292	TEE;BRS;1/2NPT
27	1	EA	A-0656-16	REDUCER;HEX;BRS;1NPT;1/2NPT
28	4	EA	A-23688-2	SCREW;SKT HD;SHLDR;SST;M6X1.0;8 MM

**COMPLETE METALWORKING SOLUTIONS**

(800) 991-4225  
www.ahbinc.com  
ISO Certified  
customerservice@ahbinc.com

TOOLING & MACHINERY

UNCONTROLLED COPY. USER IS RESPONSIBLE FOR VERIFYING THE CURRENT REVISION LEVEL.

THIRD ANGLE PROJECTION

**Flow** MATERIAL SEE BOM

THIS DRAWING IS THE PROPERTY OF FLOW INTERNATIONAL CORPORATION AND IS NOT TO BE COPIED OR REPRODUCED WITHOUT THE WRITTEN CONSENT OF FLOW INTERNATIONAL CORPORATION.

DRAWN BY H.STACEY	STARTED 4/1/2016	ENG D.BADER	EST WEIGHT N/A	MODELED IN SOLIDWORKS
TITLE <b>FILTER ASSY;WASTE WATER</b>				
REVISION J	SCALE 1:10	BASE PART NUMBER	<b>R34022</b>	1 OF 1