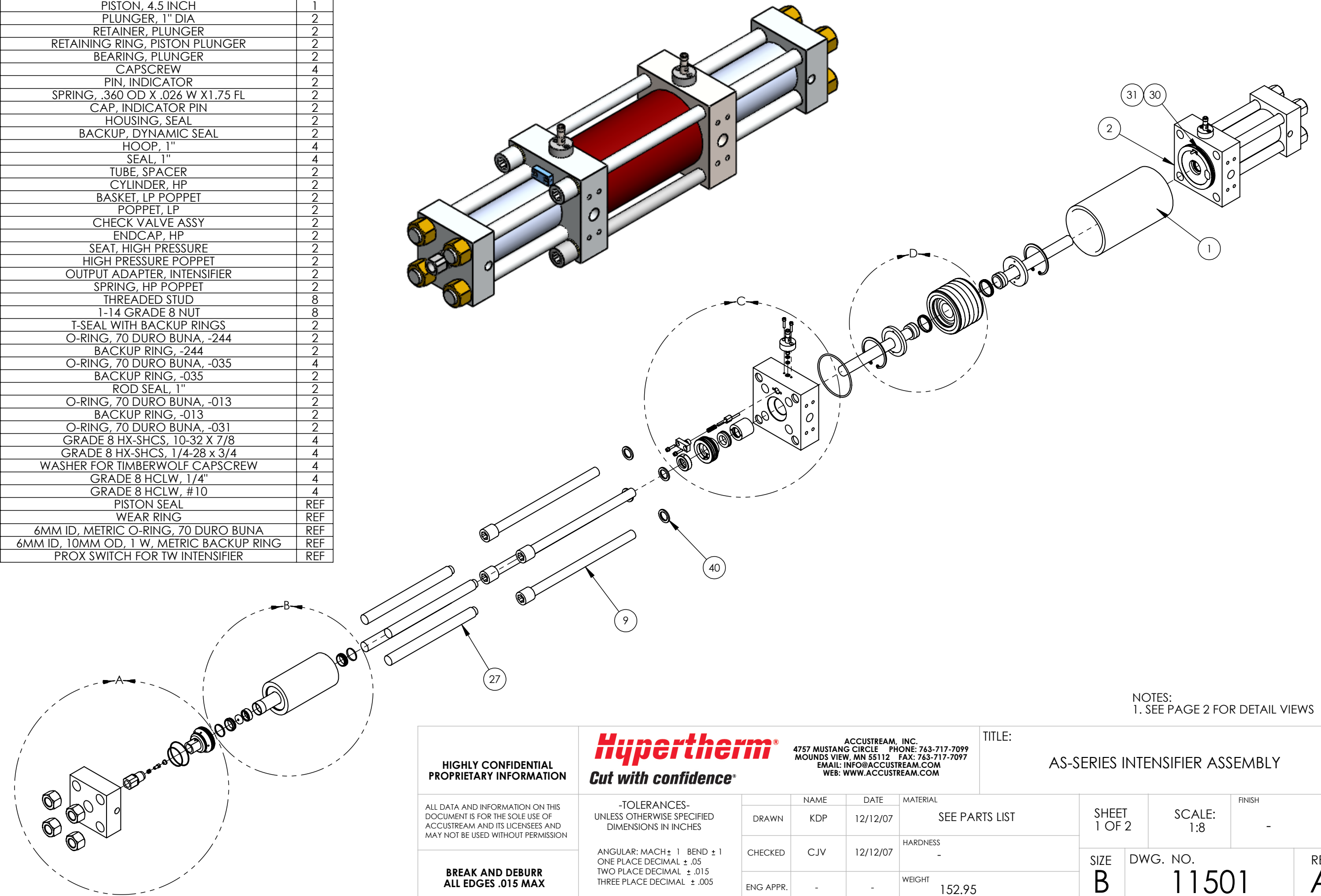


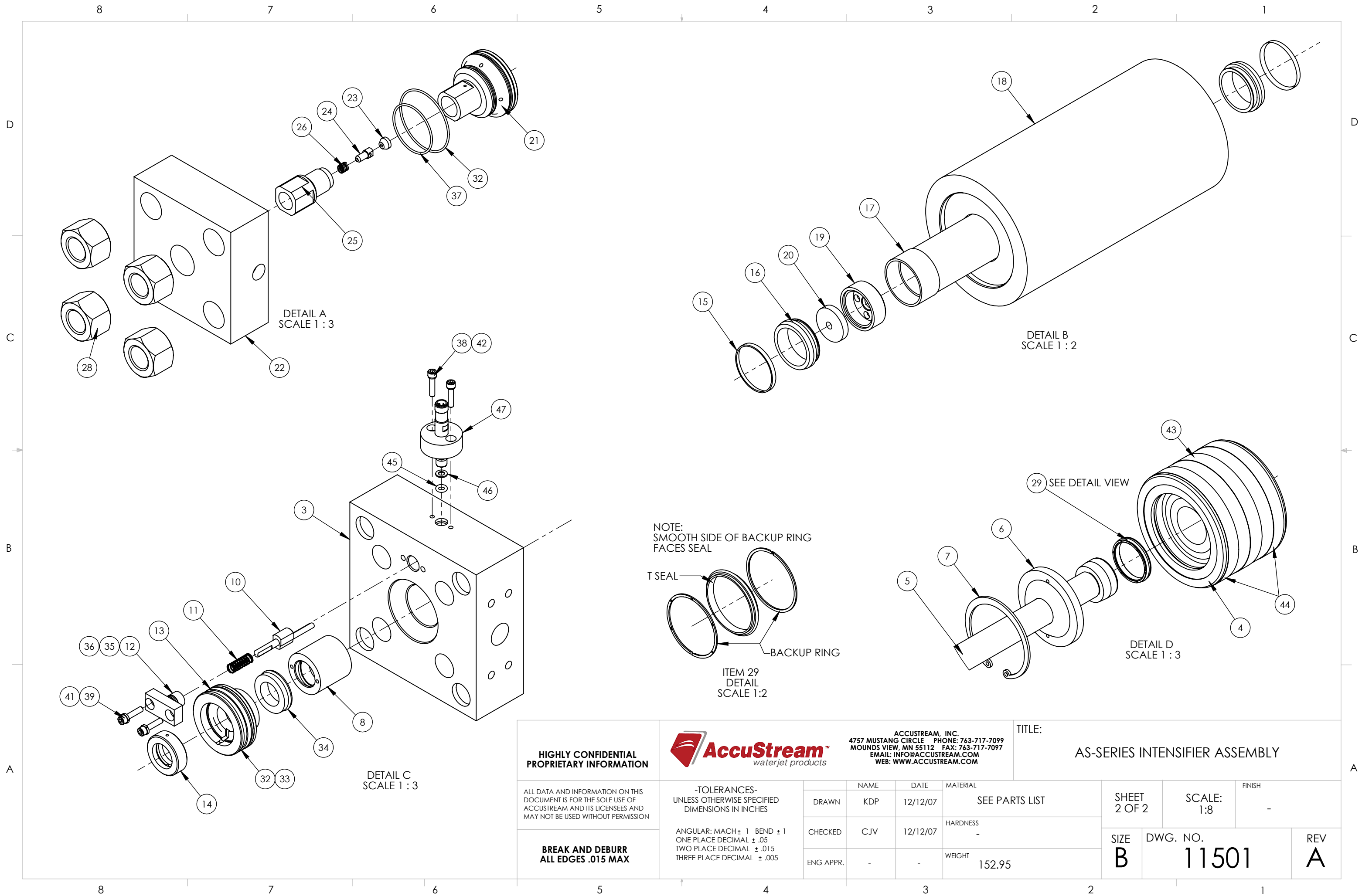
ITEM NO.	PART NUMBER	DESCRIPTION	QTY.
1	11502	HYDRAULIC CYLINDER, 4.5 IN BORE	1
2	11505	HYDRAULIC ENDCAP, LEFT HAND	1
3	11506	END CAP, RIGHT HAND	1
4	11508	PISTON, 4.5 INCH	1
5	11613	PLUNGER, 1" DIA	2
6	11593	RETAINER, PLUNGER	2
7	11310	RETAINING RING, PISTON PLUNGER	2
8	11608	BEARING, PLUNGER	2
9	11553	CAPSCREW	4
10	11518	PIN, INDICATOR	2
11	11669	SPRING, .360 OD X .026 W X 1.75 FL	2
12	11519	CAP, INDICATOR PIN	2
13	11609	HOUSING, SEAL	2
14	11610	BACKUP, DYNAMIC SEAL	2
15	11018	HOOP, 1"	4
16	11024	SEAL, 1"	4
17	11521	TUBE, SPACER	2
18	11522	CYLINDER, HP	2
19	11520	BASKET, LP POPPET	2
20	11526	POPPET, LP	2
21	11523	CHECK VALVE ASSY	2
22	11529	ENDCAP, HP	2
23	11015	SEAT, HIGH PRESSURE	2
24	11014	HIGH PRESSURE POPPET	2
25	11530	OUTPUT ADAPTER, INTENSIFIER	2
26	11126	SPRING, HP POPPET	2
27	11554	THREADED STUD	8
28	11672	1-14 GRADE 8 NUT	8
29	11675	T-SEAL WITH BACKUP RINGS	2
30	11679-244	O-RING, 70 DURO BUNA, -244	2
31	11680-244	BACKUP RING, -244	2
32	11679-035	O-RING, 70 DURO BUNA, -035	4
33	11680-035	BACKUP RING, -035	2
34	11090	ROD SEAL, 1"	2
35	11679-013	O-RING, 70 DURO BUNA, -013	2
36	11680-013	BACKUP RING, -013	2
37	11679-031	O-RING, 70 DURO BUNA, -031	2
38	13662	GRADE 8 HX-SHCS, 10-32 X 7/8	4
39	13663	GRADE 8 HX-SHCS, 1/4-28 X 3/4	4
40	13559	WASHER FOR TIMBERWOLF CAPSCREW	4
41	13665	GRADE 8 HCLW, 1/4"	4
42	13664	GRADE 8 HCLW, #10	4
43	11673	PISTON SEAL	REF
44	11674	WEAR RING	REF
45	11797	6MM ID, METRIC O-RING, 70 DURO BUNA	REF
46	11798	6MM ID, 10MM OD, 1 W, METRIC BACKUP RING	REF
47	11670	PROX SWITCH FOR TW INTENSIFIER	REF

REVISIONS			
REV.	DESCRIPTION	DATE	APPROVED
A	RELEASED.	6/23/2008	CJV



NOTES:
1. SEE PAGE 2 FOR DETAIL VIEWS

<p>HIGHLY CONFIDENTIAL PROPRIETARY INFORMATION</p> <p>ALL DATA AND INFORMATION ON THIS DOCUMENT IS FOR THE SOLE USE OF ACCUSTREAM AND ITS LICENSEES AND MAY NOT BE USED WITHOUT PERMISSION</p> <p>BREAK AND DEBURR ALL EDGES .015 MAX</p>	<p>Hypertherm®</p> <p><i>Cut with confidence®</i></p>		<p>ACCUSTREAM, INC. 4757 MUSTANG CIRCLE PHONE: 763-717-7099 MOUNDS VIEW, MN 55112 FAX: 763-717-7097 EMAIL: INFO@ACCUSTREAM.COM WEB: WWW.ACCUSTREAM.COM</p>		<p>TITLE: AS-SERIES INTENSIFIER ASSEMBLY</p>			
	<p>-TOLERANCES- UNLESS OTHERWISE SPECIFIED DIMENSIONS IN INCHES</p> <p>ANGULAR: MACH ± 1 BEND ± 1 ONE PLACE DECIMAL ± .05 TWO PLACE DECIMAL ± .015 THREE PLACE DECIMAL ± .005</p>		<p>NAME</p> <p>DRAWN KDP</p> <p>CHECKED CJV</p> <p>ENG APPR. -</p>	<p>DATE</p> <p>12/12/07</p> <p>12/12/07</p> <p>-</p>	<p>MATERIAL</p> <p>SEE PARTS LIST</p> <p>HARDNESS -</p> <p>WEIGHT 152.95</p>	<p>SHEET 1 OF 2</p> <p>SCALE: 1:8</p> <p>FINISH -</p>	<p>SIZE B</p> <p>DWG. NO. 11501</p>	<p>REV A</p>
	<p>REV. DESCRIPTION DATE APPROVED</p> <p>A RELEASED. 6/23/2008 CJV</p>							



**HIGHLY CONFIDENTIAL
PROPRIETARY INFORMATION**

AccuStream™
waterjet products

ACCUSTREAM, INC.
4757 MUSTANG CIRCLE PHONE: 763-717-7099
MOUNDS VIEW, MN 55112 FAX: 763-717-7097
EMAIL: INFO@ACCUSTREAM.COM
WEB: WWW.ACCUSTREAM.COM

TITLE:
AS-SERIES INTENSIFIER ASSEMBLY

ALL DATA AND INFORMATION ON THIS DOCUMENT IS FOR THE SOLE USE OF ACCUSTREAM AND ITS LICENSEES AND MAY NOT BE USED WITHOUT PERMISSION

**-TOLERANCES-
UNLESS OTHERWISE SPECIFIED
DIMENSIONS IN INCHES**

ANGULAR: MACH ± 1 BEND ± 1
ONE PLACE DECIMAL ± .05
TWO PLACE DECIMAL ± .015
THREE PLACE DECIMAL ± .005

	NAME	DATE	MATERIAL
DRAWN	KDP	12/12/07	SEE PARTS LIST
CHECKED	CJV	12/12/07	HARDNESS -
ENG APPR.	-	-	WEIGHT 152.95

SHEET 2 OF 2	SCALE: 1:8	FINISH -
-----------------	---------------	-------------

**BREAK AND DEBURR
ALL EDGES .015 MAX**

SIZE B	DWG. NO. 11501	REV A
------------------	--------------------------	-----------------