

5th AXIS. FIXTURES

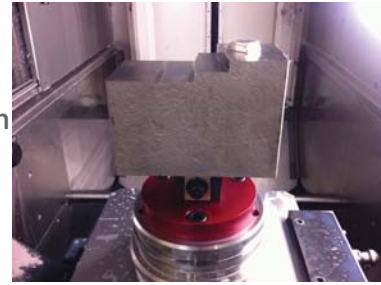


Innovative solutions for your 3, 4, and 5 axis machines

Benefits

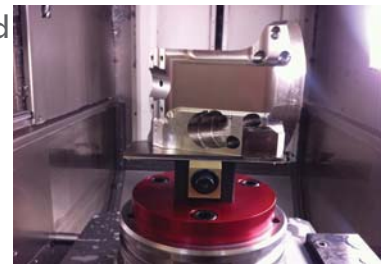
Simple Design

5th Axis Fixtures are manufactured from hardened alloy steel to exacting standards. Our innovative fixtures are lighter, stronger, and more efficient than any traditional vise on the market. With machining access to 5 surfaces of the work piece, parts can be completed in the least number of operations.



Precise Repeatability

The locating pin repeats within .001", meaning that parts can be easily located and removed from the fixture without the worry that parts will be relocated in the wrong position.



Positive Clamping Force

The 45° gives our fixtures tremendous clamping force, ensuring 1 to 1 positive clamping.

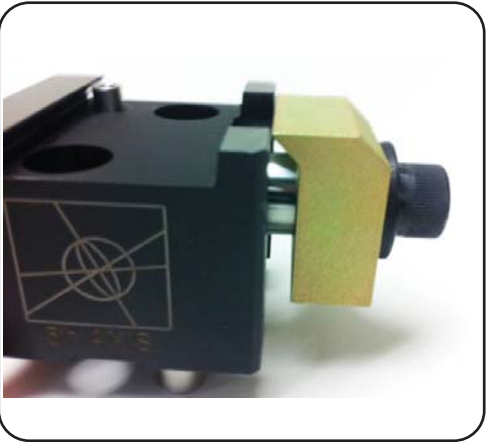
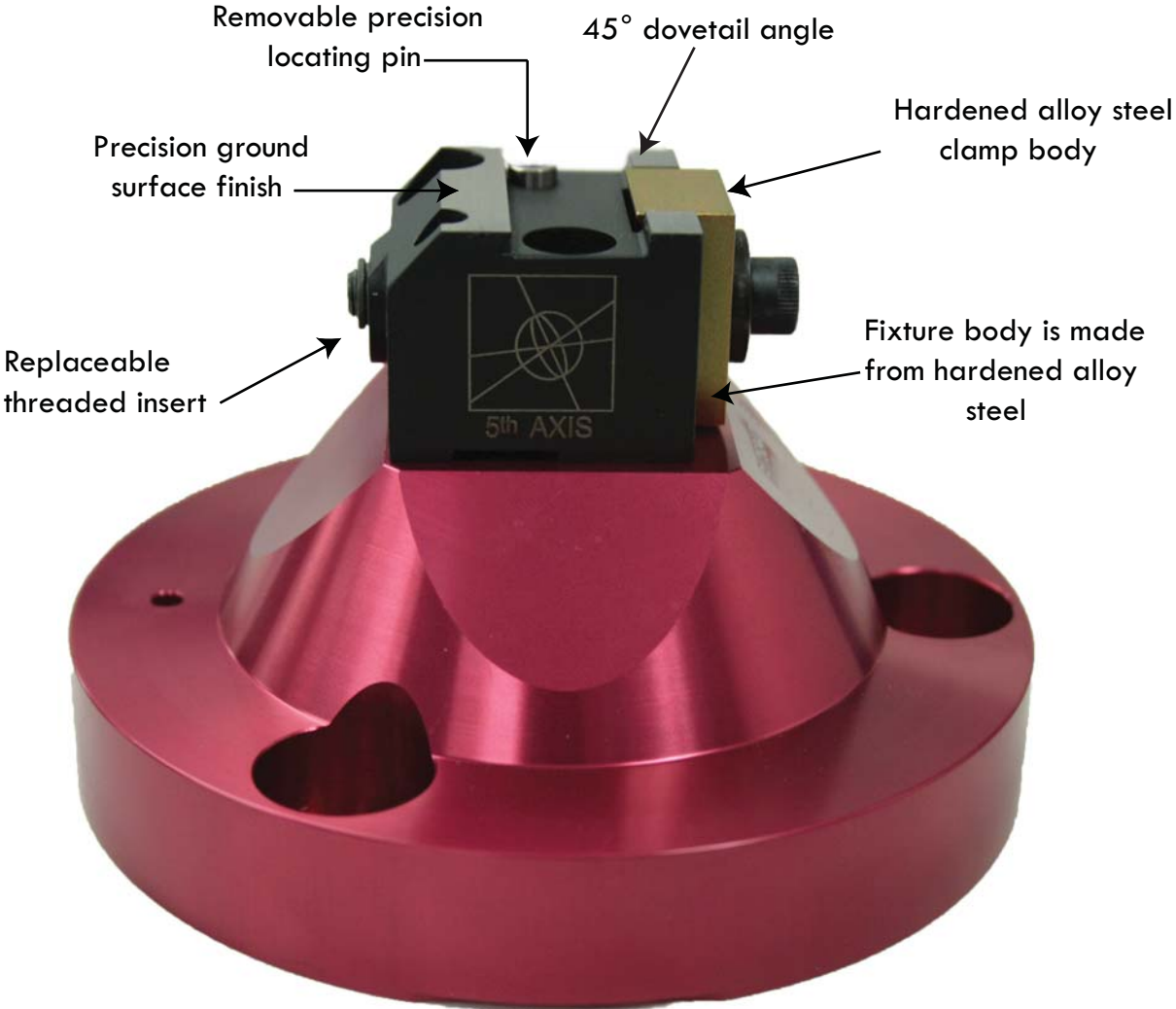
Reduce Material Size and Waste

Our dovetail fixtures hold onto as little as .06" of material. This will reduce your material cost by allowing you to utilize smaller stock sizes and having less material that you need to machine away.

A recent study showed that the savings gained from utilizing our dovetail fixtures out weighted the cost of adding the dovetail prep operation 2 to 1.



Design



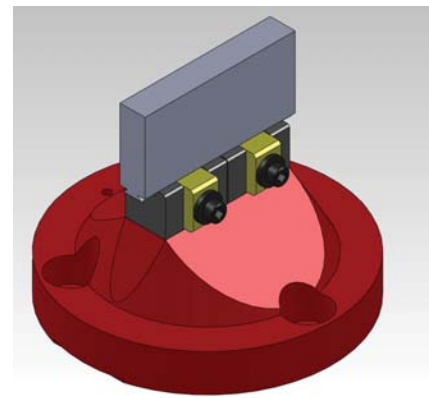
D051251WM / D1151S

For stock under 1"



The D051251WM is a simple and robust .5"x.5" dovetail fixture designed for stock under 1". It features a wedge clamp for superior clamping force and a low profile design that optimizes tool clearance. This micro dovetail fixture is the perfect choice for multi-axis work on smaller parts of all shapes and sizes. Do not let its small size fool you, this dovetail fixture packs some serious clamping force.

Price: \$199.00



For 1"-3" stock

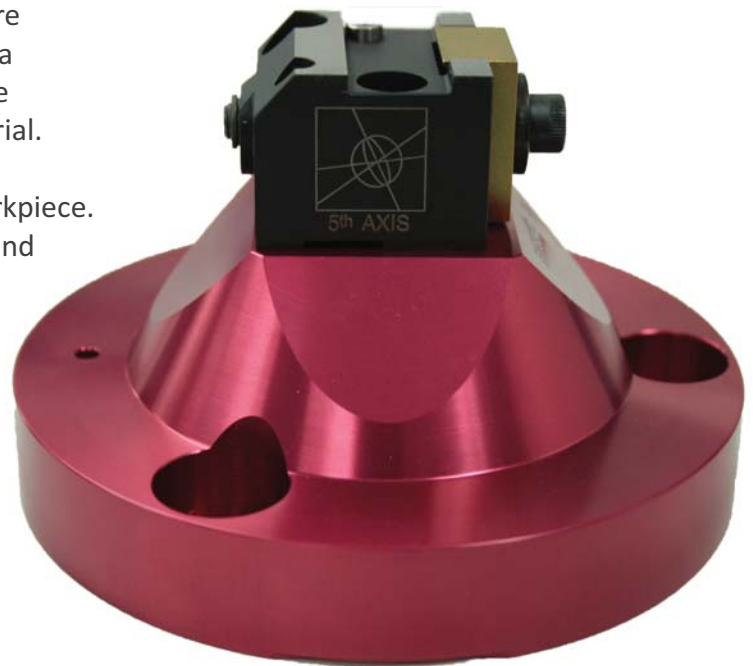
The D1151S is a simple and robust 1" x 1.5" dovetail fixture designed for all 3, 4, and 5-axis cnc machines. It features a low profile design to optimize tool clearance and minimize second operation cleanup: saving time, money, and material.

The D1151S allows machining access to 5 sides of the workpiece. It is manufactured from hardened alloy steel for rigidity and wear resistance.

The precision locating pin repeats within .001" so parts can be roughed on lower cost machines and relocated on high precision machines for finishing, speeding shop through-put.

Price: \$275.00

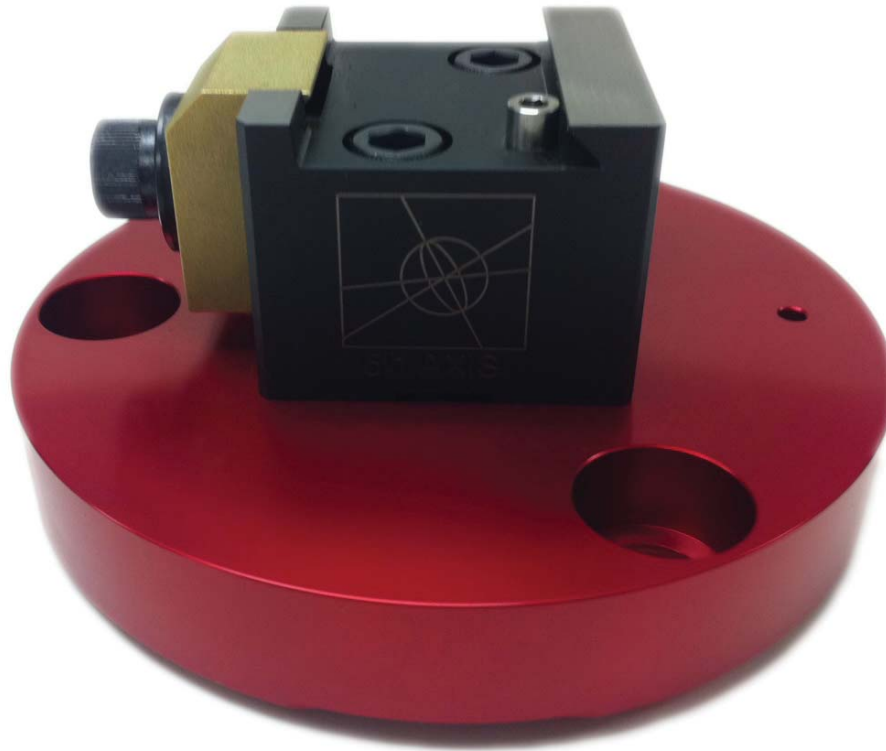
*Adapter not included.



Part Number	D05152WS	D051251WM	D1151S	D221M	D362M
Compatible Stock Size	.50 up to 1.00	.50 up to 1.00	1.00 up to 3.00	2.00 up to 4.00	3.00 and up
Fixture Dimensions (LxW)	1.00 x .70	1.25 x .80	1.50 x 1.00	2.00 x 2.00	6.00 x 3.00
Fixture Height	.50	.72	1.05	1.50	1.36
Dovetail Width	.42	.42	.66	1.34	1.94
*All measurements are in inches					

D221M

For 2" to 4" stock



The D221M is a simple and robust 2" x 2" dovetail fixture designed for all 3, 4, and 5-axis cnc machines. It features a low profile design to optimize tool clearance and minimize second operation cleanup: saving time, money, and material.

The D221M allows machining access to 5 sides of the workpiece. It is manufactured from hardened alloy steel for rigidity and wear resistance.

The fixture utilizes a 45° and features: a removable precision locating pin, removable dowel pins, and a precision ground surface finish.

The precision locating pin repeats within .001" so parts can be roughed on lower cost machines and relocated on high precision machines for finishing, speeding shop through-put.

Price: \$325.00

*Adapter not included

Part Number	D05152WS	D051251WM	D1151S	D221M	D362M
Compatible Stock Size	.50 up to 1.00	.50 up to 1.00	1.00 up to 3.00	2.00 up to 4.00	3.00 and up
Fixture Dimensions (LxW)	1.00 x .70	1.25 x .80	1.50 x 1.00	2.00 x 2.00	6.00 x 3.00
Fixture Height	.50	.72	1.05	1.50	1.36
Dovetail Width	.42	.42	.66	1.34	1.94
*All measurements are in inches					

G12146



The G12146 is a precision rail mount system for mounting up to six 2" dovetail fixtures. The fixtures can be spaced for part clearance or placed next to each other for increased clamping force on longer parts.

The rail easily attaches with 1/2" bolts spaced for direct mounting on 2" grid pattern commonly found on tombstones, tooling plates, and T-slot tables.

This system allows for increased part density and can allow you to run lights out with out complicated robotics on your 3-axis mill or run your horizontal the entire night on a single tombstone.

The precision rail is manufactured from anodized 6061 aluminum. The G12146 is compatible with our D221M 2" x 2" fixture.

Price: \$250.00

*Price does not include fixtures.

D362M

For 3" stock and larger



*Actual size

The D362M is a simple and robust 3" x 6" dovetail fixture designed for all 3, 4, and 5-axis cnc machines. It features a low profile design to optimize tool clearance and minimize second operation cleanup: saving time, money, and material.

The D362M allows machining access to 5 sides of the work piece. It is manufactured from hardened alloy steel for rigidity and wear resistance.

The fixture utilizes a 45° and features a removable precision locating pin, removable dowel pins, and a precision ground surface finish.

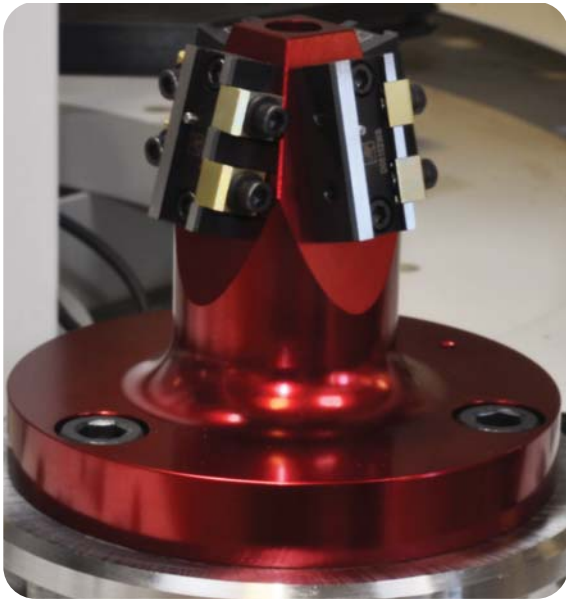
The precision locating pin repeats within .001" so parts can be roughed on lower cost machines and relocated for finishing, speeding shop through-put.

Price: \$495.00

Part Number	D05152WS	D051251WM	D1151S	D221M	D362M
Compatible Stock Size	.50 up to 1.00	.50 up to 1.00	1.00 up to 3.00	2.00 up to 4.00	3.00 and up
Fixture Dimensions (LxW)	1.00 x .70	1.25 x .80	1.50 x 1.00	2.00 x 2.00	6.00 x 3.00
Fixture Height	.50	.72	1.05	1.50	1.36
Dovetail Width	.42	.42	.66	1.34	1.94
*All measurements are in inches					

Automated Production

Perfect for lights out machining.



The P4344 is a pyramid fixture that utilizes four of our D05152WS micro dovetail fixtures. The orientation of the fixtures allows for excellent tool clearance in a compact unit.

Machine 4 parts in the same area that you would normally only be able to machine one.

Perfect for stock under 1", the P4344 is the ultimate solution for machining small parts in large quantities.

Price: \$995.00

*Price includes 4 D05152WS dovetail fixtures

Maximize pallet efficiency!

The PY6420 is a pyramid fixture that utilizes four of our D1151S dovetail fixtures. The orientation of the fixtures optimize tool clearance and minimize second operation cleanup: saving time, money, and material.

Space is money and with the small footprint of this pyramid, no space is wasted, allowing you to machine 4 parts simultaneously in a small area.

Run more parts per cycle and minimize pallet and tool change time per part. The PY6420 is the perfect solution for running lights out. It can be mounted on trunnions, pallets, machine table, etc.

The PY6420 is manufactured in the USA from hardened alloy steel for rigidity and wear resistance.

Price: \$1250.00

*Price includes 4 D1151S dovetail fixtures



CER40/ DC2253VCMT

Using roundbar stock? We have you covered.

The CER40 is a round bar fixture that utilizes an ER40 collet. ER40 collets are available in all sizes.

This fixture is the ultimate solution for machining with round stock.

The CER40 is very popular with our dental customers as well as many others who commonly use roundbar stock.

Price: \$225.00

*Adapter not included



Prep your stock in no time with our indexable dovetail cutter.



The DC2253VCMT is a custom indexable cutter that cuts a 45° in your stock. Replace inserts not expensive end mills!

Uses standard, replaceable, V-type inserts.

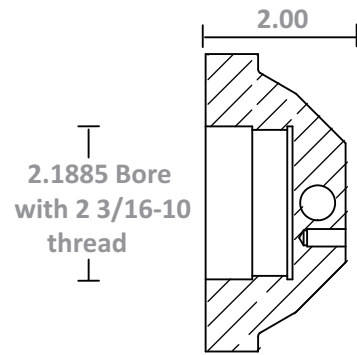
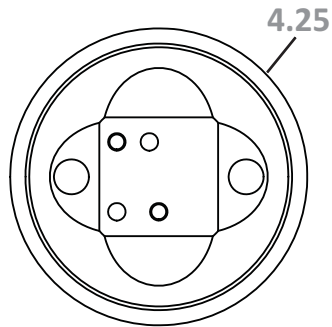
- Comes with dovetail stock instructions to ensure the stock is prepped correctly everytime.
- Also included is a quality control kit for checking dovetails: Gauge pin set and allen wrench.
- $\varnothing 1"$ H6 shank for set screw, collet, and shrink fit holders.

Price: \$295.00

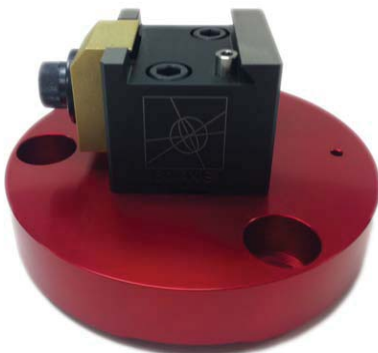
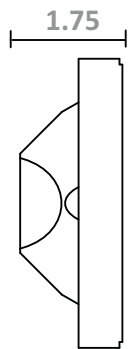
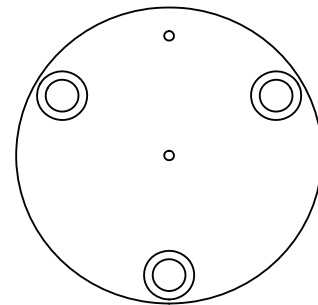
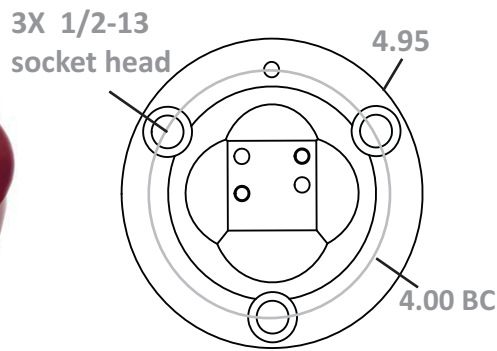
Adapters



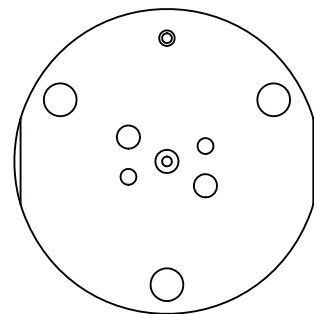
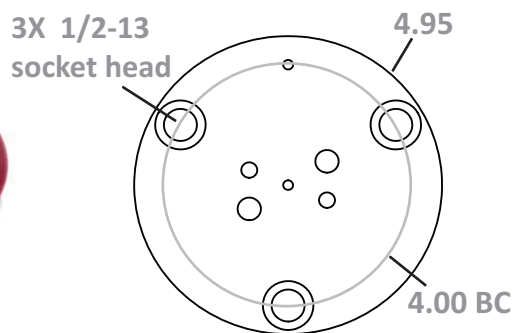
ADPHA5CD115



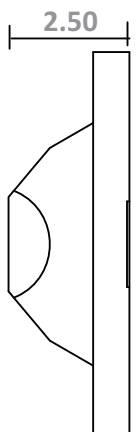
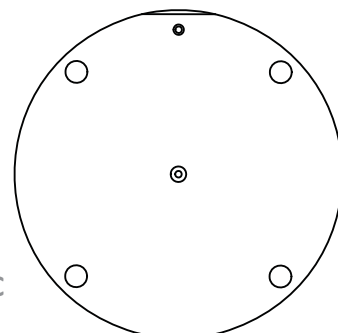
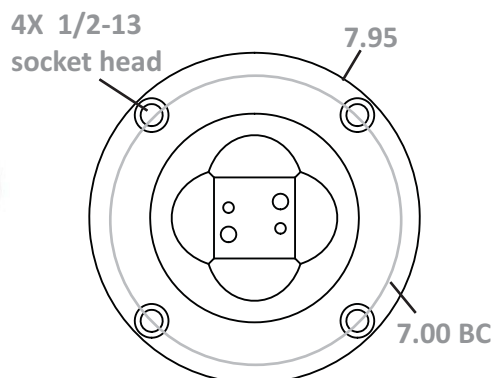
P17534D115



P7534D22



P2547D22



Pricing

Dovetail Fixtures

Part Number	Description	Price
D05152WS	.50" X .50" Dovetail Fixture	\$199.00
D051251WM	.80" x 1.25" Dovetail Fixture	\$199.00
D1151S	1" x 1.5" Dovetail Fixture	\$275.00
D221M	2" x 2" Dovetail Fixture	\$325.00
D362M	3" x 6" Dovetail Fixture	\$495.00
D3103M	3" x 10" Dovetail Fixture	\$650.00

Pedestals and Base Plates

ADPHA5CD115	Collet adapter for D1151S	\$250.00
P17534D115	5" diameter base for D1151S	\$200.00
P2547D221	8" diameter base for D221M	\$225.00
P7534D221	5" diameter base for D221M	\$150.00
P7534CER40	5" diameter base for CER40 roundbar	\$150.00

Dovetail Cutter

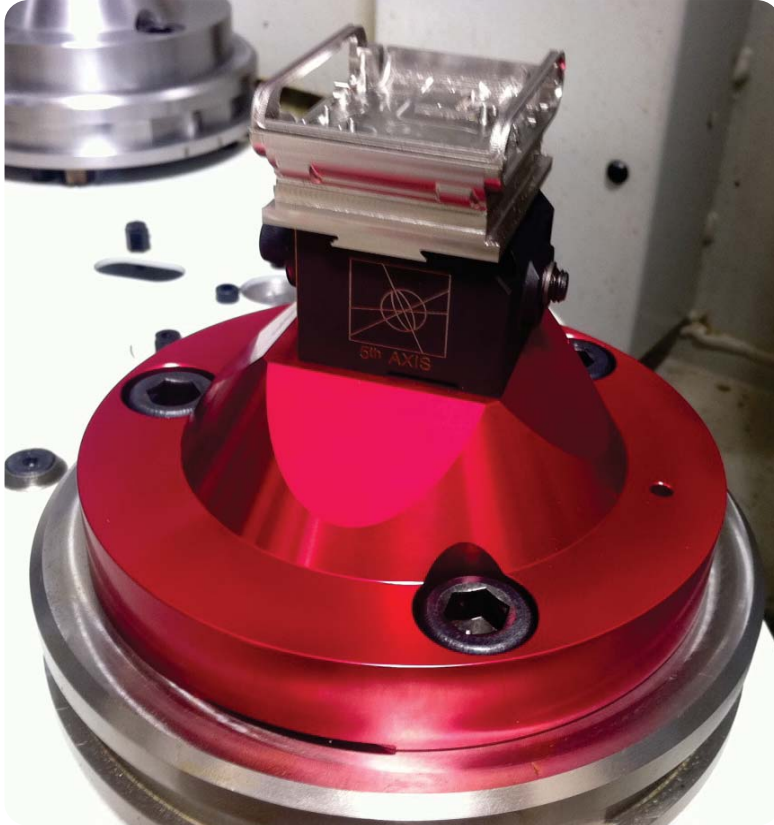
DC2253VCMT	Dovetail Cutter with 1 set of inserts and QC kit	\$295.00
------------	--	----------

Roundbar Fixture

CER40	Roundbar Fixture	\$225.00
-------	------------------	----------

Automated Production Solutions

P4344	Pyramid w/4 D05152WS fixtures	\$995.00
PY6420	Pyramid w/4 D1151S fixtures	\$1250.00
PY6415	Pyramid w/4 CER40 roundbar fixtures	\$1250.00



www.5axisfixtures.com

 **5th AXIS[®] FIXTURES**

Innovative solutions for your 3, 4, and 5 axis machines

7140 Engineer Rd. San Diego, CA 92111

Tel: 858-505-0432

Fax: 858-505-9344

Email: sales@5axisfixtures.com

