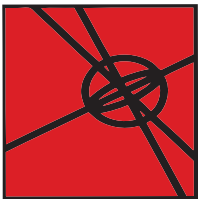


The worlds most innovative
workholding built specifically
for Haas Automation.

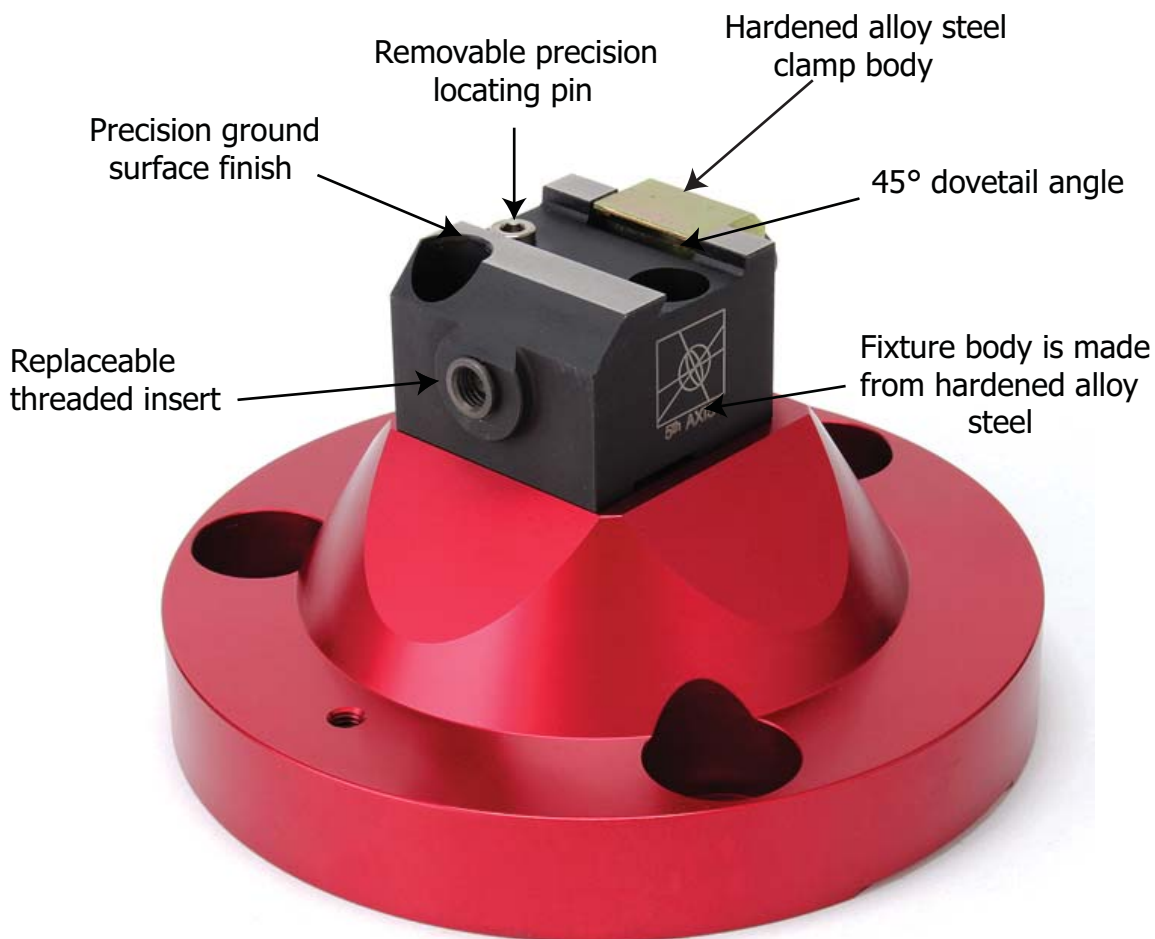
5th AXIS[®]



HAAS CATALOG



BENEFITS



1

TOOL CLEARANCE

- Machine multiple features in one operation.
- Maintain part accuracy by limiting setups.
- Allows machining access to 5 sides of the workpiece.

2

UNSURPASSED CLAMPING STRENGTH

- Unbeatable security for unattended operation.
- Clamp securely onto as little as .080" of stock.
- 45° dovetail mechanically locks stock in place.

3

PRECISE REPEATIBILITY

- Precision locating pins (1 top, 2 bottom).
- Parts relocate within +/- .001 from fixture to fixture.

4

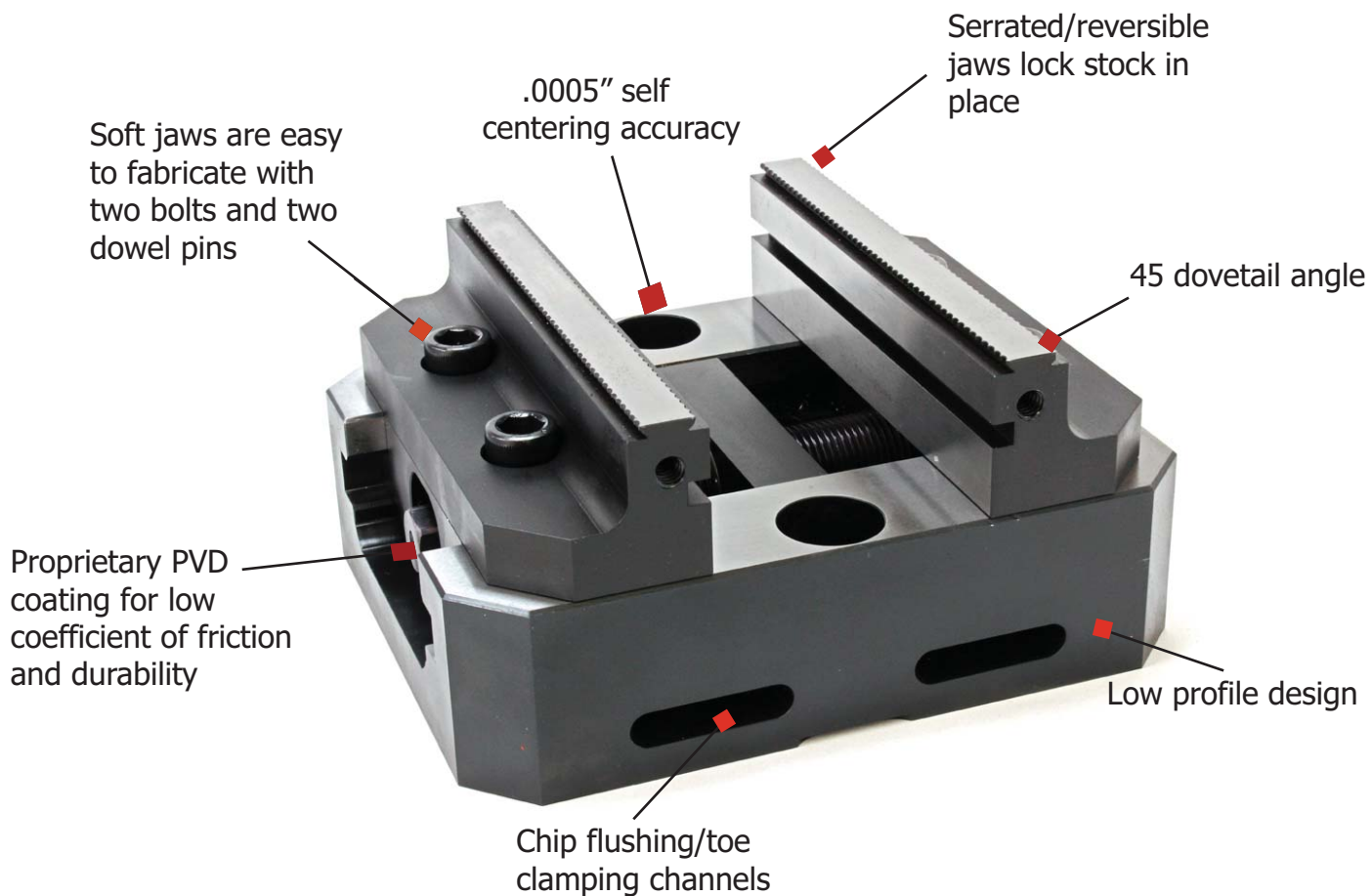
PART DENSITY

- Small footprint allows for more parts per cycle.
- Minimize pallet and tool change time per part.

BENEFITS

- 1 Low profile self-centering vise
- 2 .0005" centering accuracy
- 3 Direct mounting with standard 2" spacing to rotary, t-slot, and tombstones.

- 4 Built in dovetail can be utilized for increased clamping force
- 5 Compatible with all horizontal and vertical 3, 4, and 5 axis cnc machines
- 6 Largest leadscrew in its class



TR 160



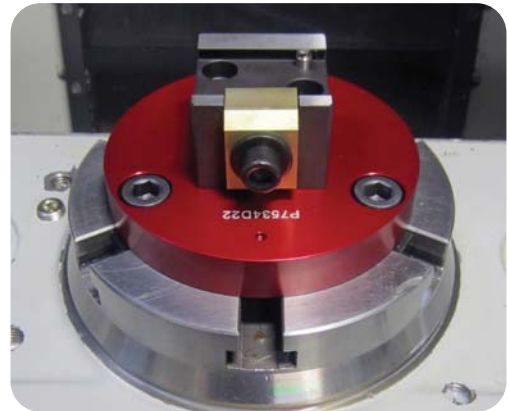
AVAILABLE OPTIONS FOR TR160 / TR210

D1151S ON P17534



- For 1"-3" stock.
- Minimum stock size: 1 in.
- Base dimensions: 5" diameter.
- Direct mounts to TR-160 / TR-210.
- All locating hardware is included.

D221M ON P7534



- For 2"-4" stock.
- Minimum stock size: 2 in.
- Base dimensions: 5" diameter.
- Direct mounts to TR-160 / TR-210.
- All locating hardware is included.

D362M



- For 3" stock and larger.
- Minimum stock size: 3 in.
- Direct mounts to TR-160 / TR-210.
- All locating hardware is included.

V562



Base length x width	Clamping Range	Clamping Force (lbs)
6" x 5"	0-5"	6,000

TR 210

HA5C



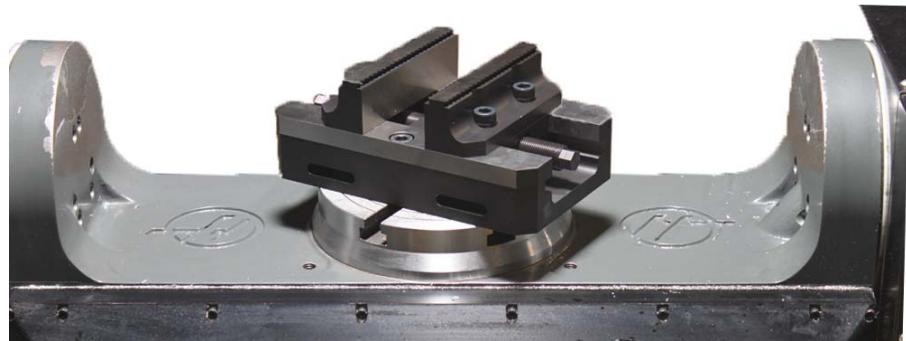
AVAILABLE OPTIONS FOR TR210



D221M ON P2547

- For 2"-4" stock.
- Minimum stock size: 2 in.
- Base dimensions: 5" diameter.
- Direct mounts to TR-160 / TR-210.
- All locating hardware is included.

Base length x width	Clamping Range	Clamping Force (lbs)
6" x 10"	0-10"	10,000



V5610

HA5C ROTARY



- Threads directly onto Haas 5C Collet.
- Available with D1151S or D051251WM dovetail fixture.

D051251WM

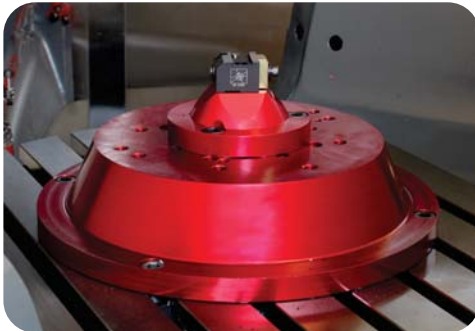


D1151S ON ADPHA5C

UMC 750

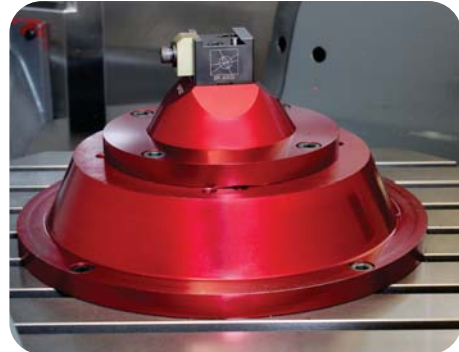


D1151S ON P17534D115



- For 1"-3" stock.
- Minimum stock size: 1 in.
- Base dimensions: 14" diameter.
- Direct mounts to UMC750 with 5XUMC adapter.

D221M ON P2547D22



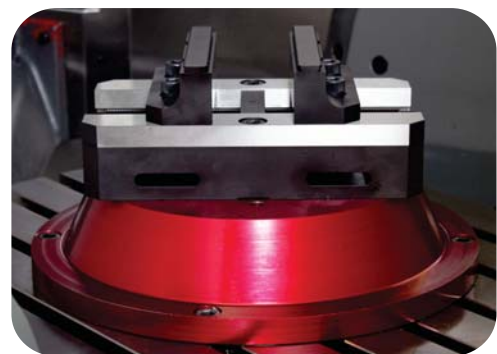
- For 2"-4" stock.
- Minimum stock size: 2 in.
- Base dimensions: 14" diameter.
- Direct mounts to UMC750 with 5XUMC adapter.

V562



- 5"x6" self centering vise.
- Dovetail features built into jaw.
- 0-5" clamping range.
- Direct mounts to UMC750 with VXUMC adapter.

V6105

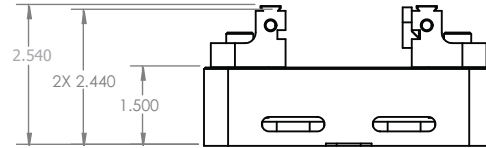
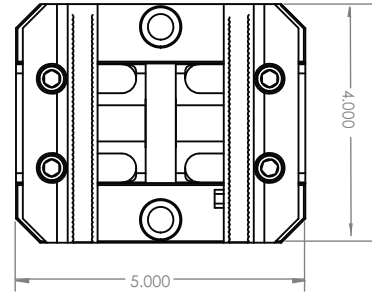


- 6" x 10" self centering vise.
- Dovetail feature built into jaw.
- 0-9" clamping range.
- Direct mounts to UMC750 with 5XUMC adapter.

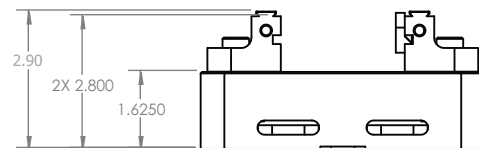
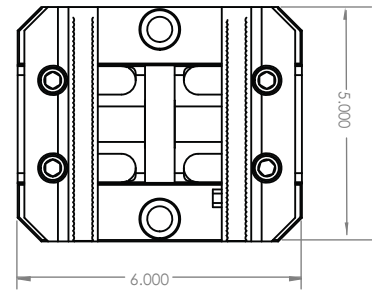
Available
2013



V453 4" X 5" VISE



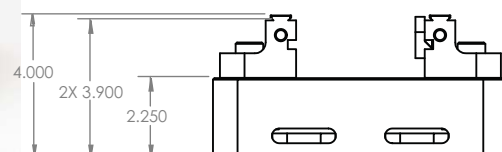
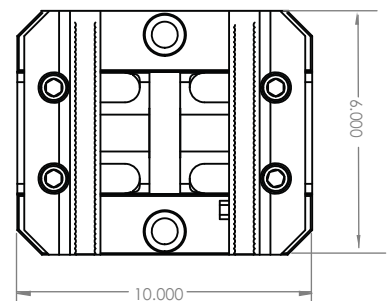
V562 5" X 6" VISE



Available
2013



V6105 6" X 10" VISE



EC 400



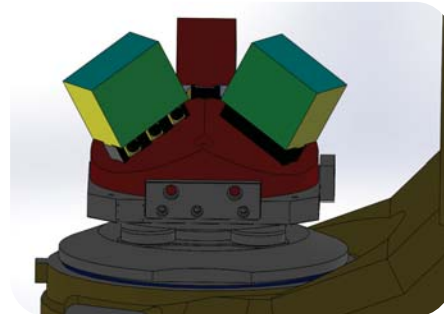
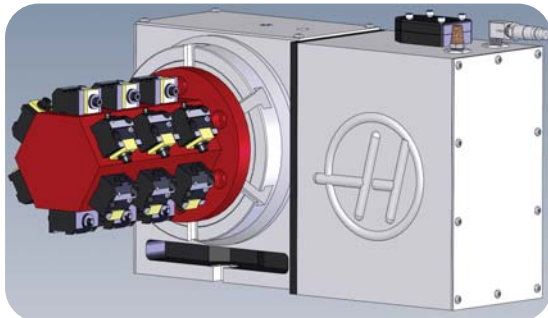
3 AXIS
4 AXIS
HORIZONTAL

G SERIES GANG PLATES

- Modular gang fixture plate.
- Available for D051251WM, D1151S, D221M.
- Plate features standard 2" bolt spacing for direct mounting onto tombstones.



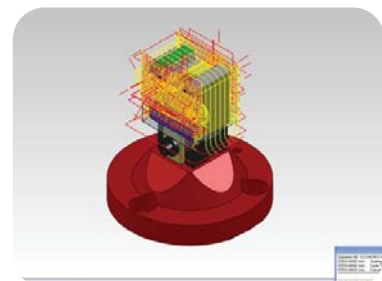
CUSTOM FIXTURING AVAILABLE



SOLID MODELS AVAILABLE

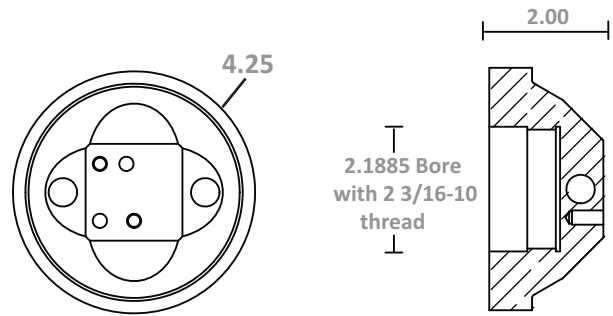


- Please visit fifthaxis.com to download solid models of all the products we offer.
- See an application for our fixtures that is not listed in the catalog? Contact us, we will work with you to create a solution that fits your needs.

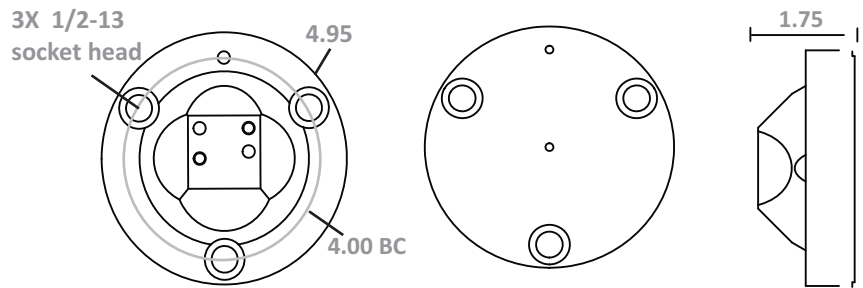




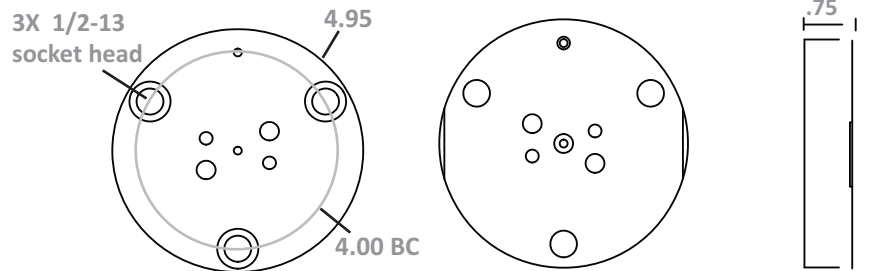
ADPHA5CD115



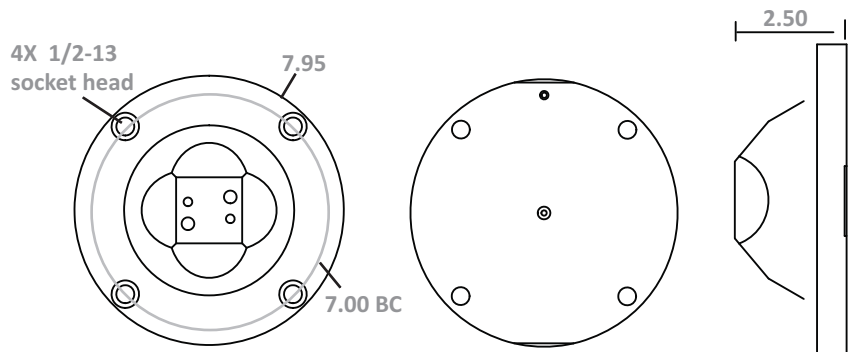
P17534D115



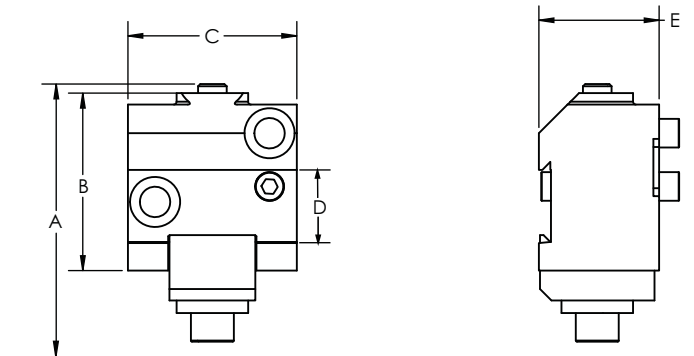
P7534D22



P2547D22



	A	B	C	D	E
D051251WM	1.250	.800	1.230	.420	.750
D1151S	2.250	1.550	1.475	.660	1.05
D221M	2.875	1.950	1.950	1.341	1.50
D362M	3.950	3.00	6.00	1.94	1.36



NOTES

NOTES

5th AXIS[®]



FIFTHAXIS.COM

7140 Engineer Rd. San Diego, CA 92111

Tel: 858-505-0432

Fax: 858-505-9344

Email: sales@fifthaxis.com

