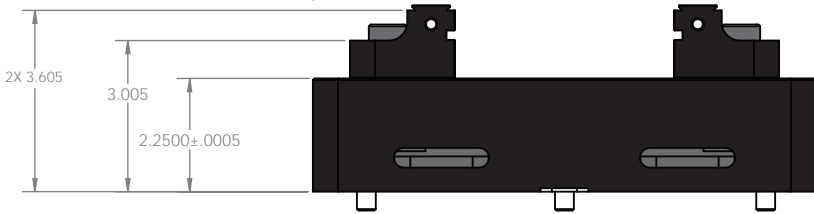
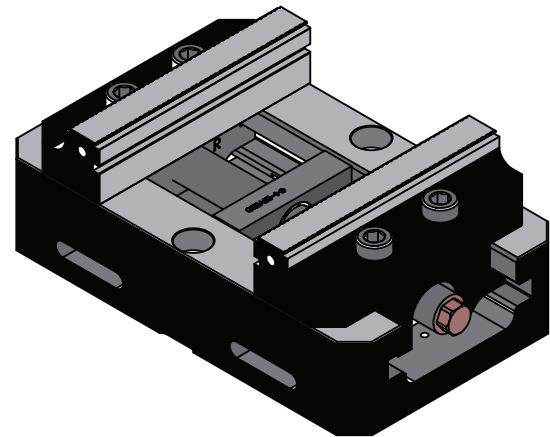
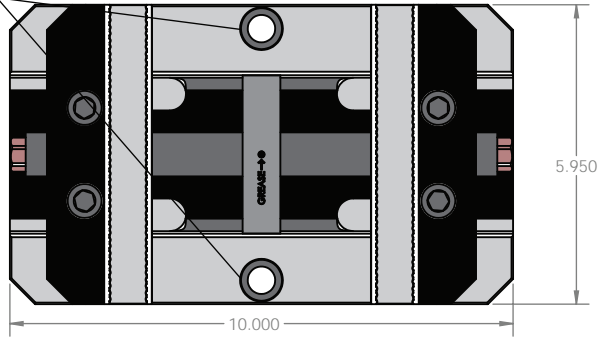


V6105

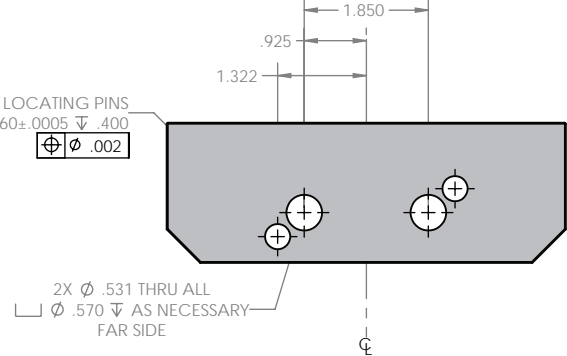


Technical Data	V6105
Jaw Length	6"
Clamping Force (10-60ft. lbs)	800-6600 Lbs.
Jaw Opening	0-8.5"
Step Depth	.100"
Jaw Height	1.450"
Centering Accuracy	.0005"

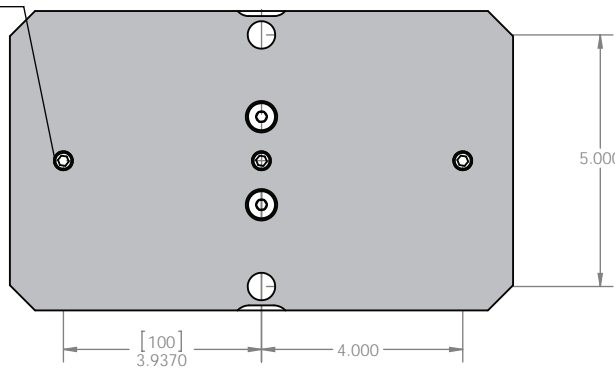
DRILLED AND COUNTERBORED FOR STANDARD 1/2" SOCKET HEAD CAP SCREWS



RECOMMENDED DIMENSIONS AND HOLE LOCATIONS FOR CUTTING SOFT JAWS - BOTTOM SIDE SHOWN



LOCATION BORES MEASURE .3760 +/- .0005 2 PL SHOWN WITH OPTIONAL .375 LOCATING PINS



WHEN USING REMOVABLE LOCATING PINS
2X Ø .3760 ± .0005 ∇ .400