

- Chucks are mounted to universal base plates
- Reduced chuck diameters support tight work envelopes
- Base plate functions as a reference edge
- Air supply is through the base plate
- Pallet timing pin feature is integrated into chuck face
- 120mm chuck also has a manual option

### ASM 90

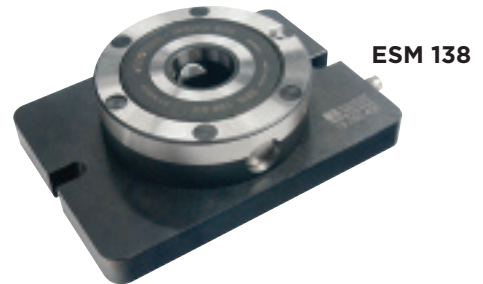
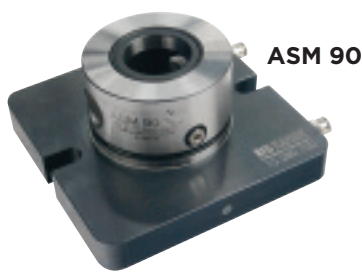
Clamping Force M10 (non turbo)	7,868 lbs
Clamping Force M12 (turbo)	11,240 lbs

### ASM 120 & ESM 138

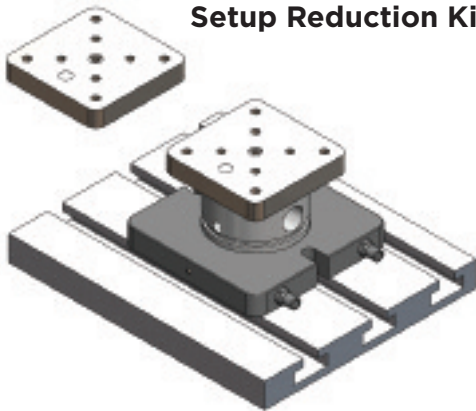
Clamping Force M10	7,868 lbs
Clamping Force M12	11,240 lbs

### All Chucks

Repeatability	.0001"
Air Pressure (open & turbo lock)	75 PSI

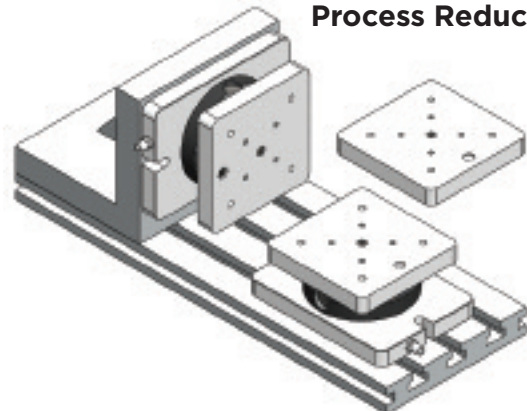


### Setup Reduction Kits



Setup Reduction Kits allow users to prep one job while another is running. These kits come with one chuck for the work cell and 2 pallets. One pallet can be loaded into the cell while the other is available for loading and unloading of fixtures or workpieces. When the job is completed simply change pallets and hit Cycle Start.

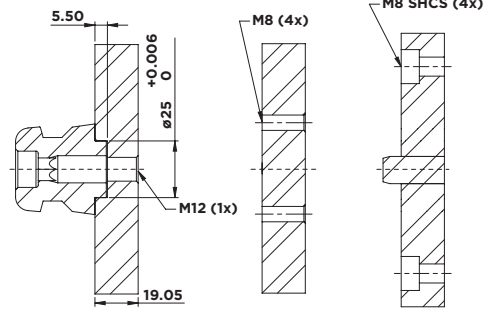
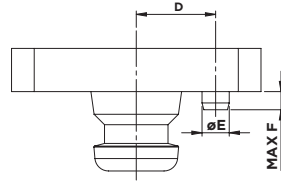
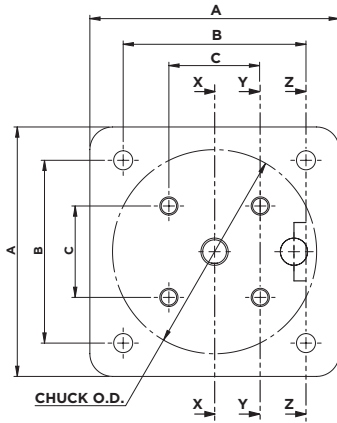
### Process Reduction Kits



Process Reduction Kits allow users to transfer parts between operations without unclamping the parts. A single pallet moves through multiple orientations while others follow as each operation is completed. Additional pallets are prepared while as the others are being processed.

Part Number	Description
15.280.110	ASM 90 one-chuck two-pallet kit with air
15.280.210	ASM 120 one-chuck two-pallet kit with air
15.280.310	ASM 120 Manual one-chuck two-pallet kit
15.280.410	ESM 138 one-chuck two-pallet kit with air

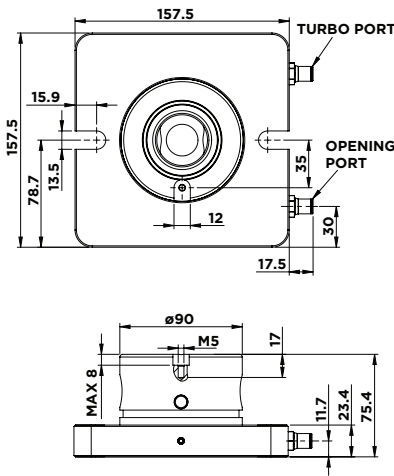
Part Number	Description
15.280.112	ASM 90 two-chuck three-pallet kit with air
15.280.212	ASM 120 two-chuck three-pallet kit with air
15.280.312	ASM 120 manual two-chuck three-pallet kit
15.280.412	ESM 138 two-chuck three-pallet kit with air



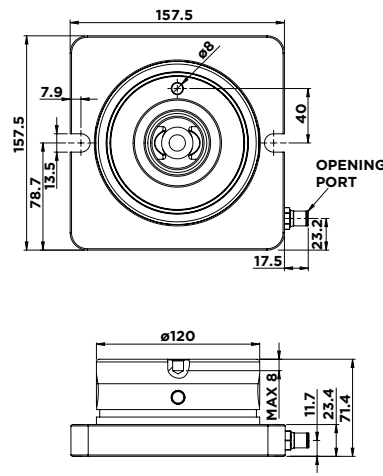
SECTION X-X      SECTION Y-Y      SECTION Z-Z

Part Number	Chuck O.D.	A	B	C	D	E	F
15.280.101	90mm	110mm	81mm	40mm	35mm	12mm	8mm
15.280.201	120mm	140mm	100mm	50mm	40mm	8mm	7mm
15.280.401	138mm	160mm	100mm	50mm	62mm	14mm	7mm

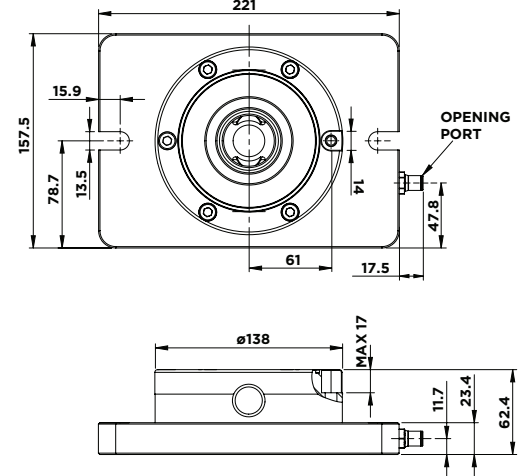
### 90mm chuck with base plate



### 120mm chuck with base plate



### 138mm chuck with base plate



#### Part Number      Description

- 15.280.100 90mm chuck with base plate
- 15.280.200 120mm chuck with base plate
- 15.280.300 120mm manual chuck with base plate
- 15.280.400 138mm chuck with base plate

#### Part Number      Description

- 15.280.101 Pallet - 90mm chuck
- 15.280.201 Pallet - 120mm chuck
- 15.280.401 Pallet - 138mm chuck
- 15.352.000 One-chuck air kit
- 15.311.030 Turbo Valve