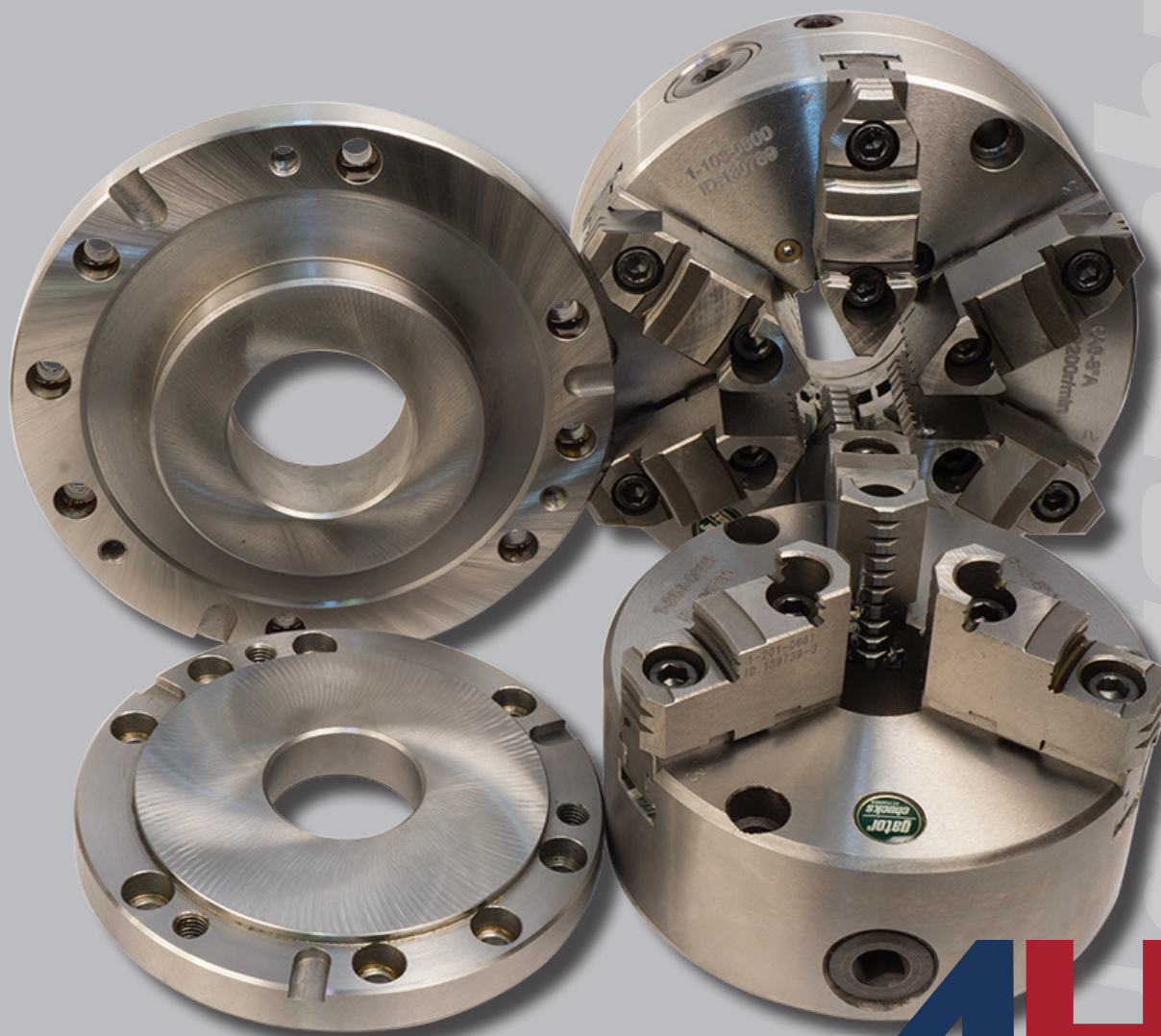


BASEPLATES

For use on indexers & rotary tables



- Ideal for use on CNC or manual rotary tables and indexers with 3/6 and 4/8 T-Slots.
- Mounting bolts and T-Nuts included.
- Made of hardened steel.

AHB

TOOLING & MACHINERY

COMPLETE METALWORKING SOLUTIONS

(800) 991-4225

ISO Certified

www.ahbinc.com

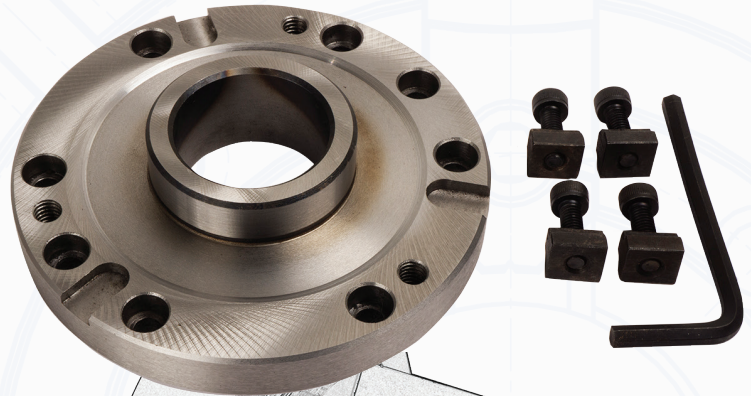
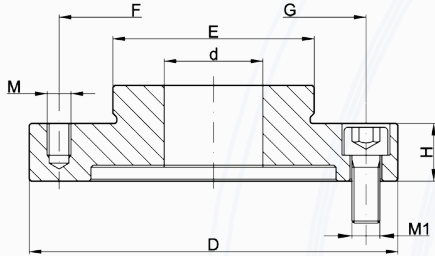
customerservice@ahbinc.com



For Adjustable Scroll Chucks

(PA Series - TechTru™)

- Designed for use with 3 & 6 jaw scroll front mount adjustable body chucks with 0.0004" T.I.R.

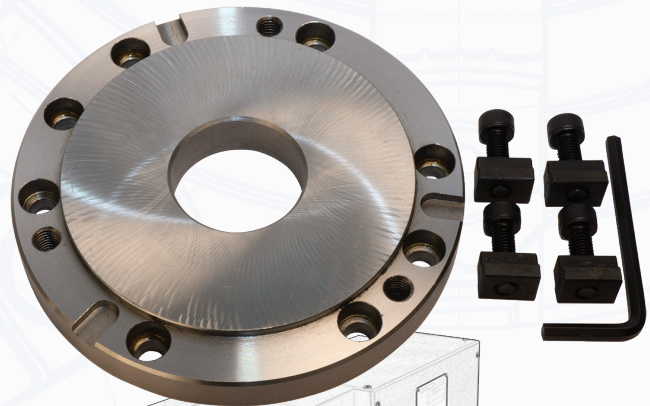
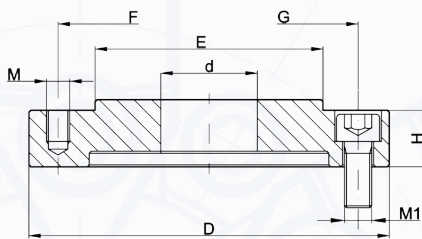


Part No.	Chuck Dia.	D	E	F	G	H	M-UNC	M1	d
F-BPA-125	5"	4.921	2.164	4.25	4.252	0.551	5/16"-18	M6	1.875
F-BPA-160	6-1/4"	6.299	3.385	5.512	5.512	0.630	3/8"-16	M8	1.850
F-BPA-200	8"	7.874	4.330	6.929	6.929	0.709	3/8"-16	M8	2.362
F-BPA-250	10"	9.843	5.708	8.819	8.819	0.787	1/2"-13	M10	3.189
F-BPA-315	12-1/2"	12.402	7.086	11.26	11.26	0.984	5/8"-11	M10	4.252
F-BPA-400	15-3/4"	11.75	11.750	6.748	10.236	1.181	5/8"-11	M12	5.551
F-BPA-500	20"	16.024	16.020	9.252	14.173	1.378	3/4"-10	M16	7.677

For Semi Steel Universal and Precision Forged Steel Scroll Chucks

(PO & PS Series)

- Designed for use with 3 & 4 jaw scroll; front mount plain back chucks.



Part No.	Chuck Dia.	D	E	F	G	H	M-UNC	M1	d
F-BPD-125	5"	4.921	3.740	4.252	4.252	0.551	5/16"-18	M6	1.875
F-BPD-160	6-1/4"	6.299	4.921	5.512	5.512	0.636	3/8"-16	M8	1.850
F-BPD-200	8"	7.874	6.299	6.929	6.929	0.709	3/8"-16	M8	2.362
F-BPD-250	10"	9.843	7.874	8.819	8.819	0.787	1/2"-13	M10	3.189
F-BPD-315	12-1/2"	12.402	10.236	11.260	11.260	0.984	5/8"-11	M10	4.252
F-BPD-400	15-3/4"	15.748	12.992	14.252	14.252	1.063	5/8"-11	M12	5.551
F-BPD-500	20"	19.685	16.535	18.031	18.031	1.181	3/4"-10	M16	7.677