



GATOR HAS A WORKHOLDING SOLUTION FOR YOUR TABLE APPLICATION.

# *gator chucks* KITS FOR TABLES



# AHB

TOOLING & MACHINERY

COMPLETE METALWORKING SOLUTIONS

(800) 991-4225

[www.ahbinc.com](http://www.ahbinc.com)

ISO Certified

[customerservice@ahbinc.com](mailto:customerservice@ahbinc.com)

- 3, 4, & 6 JAW SCROLL CHUCKS, WITH OR WITHOUT CENTERING DEVICES
- ADJUSTABLE STYLE CHUCKS (TECH-TRU) IN FORGED OR SEMI-STEEL BODIES
- UNIVERSAL AND PRECISION CHUCKS
- 5C CHUCKS
- PNEUMATIC POWER CHUCKS

ALL MATCHED WITH FULLY MACHINED BASEPLATES FOR 3/6 AND 4/8 SLOT CONFIGURATIONS. HAVE A TABLE WITH NON-STANDARD PLATE CONFIGURATION? WE CAN SUPPORT YOU WITH THESE APPLICATIONS AS WELL.

KITS ARE SUPPLIED WITH ALL HARDWARE TO MOUNT THE CHUCK AND BASEPLATE EFFORTLESSLY TO YOUR CHOSEN TABLE.

INTEGRATED

**BASEPLATES WITH INTEGRATED CENTERING RING**  
MADE SPECIALLY FOR HAAS ROTARY TABLES (FOR ADJUSTABLE STYLE CHUCKS)

INSERTED

**BASEPLATES WITH INSERTED CENTERING RING**  
MADE SPECIFICALLY FOR HAAS ROTARY TABLES (FOR UNIVERSAL & PRECISION STYLE CHUCKS)

NONE

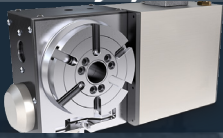
**BASEPLATES WITHOUT A CENTERING RING**  
AVAILABLE FOR ALL STYLE CHUCKS



*gator chucks*



# *gator chucks*



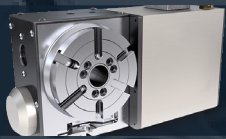
## 5" Chuck Diameter



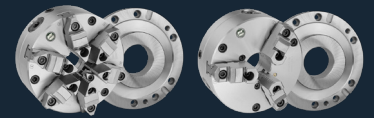
CHUCK DIA	# JAWS	CHUCK TYPE	THRU-HOLE	BASEPLATE CENTERING DEVICE	STEEL	SEMI-STEEL
5"	3-Jaw	Adjustable	1.378"	Insert	1-101-05BP-C	1-151-05BP-C
				None	1-101-05BP	1-151-05BP
	6-Jaw	Adjustable	1.378"	Insert	1-103-05BP-C	1-153-05BP-C
				None	1-103-05BP	1-153-05BP
	3-Jaw	Precision	1.2598"	Insert	1-105-05BP-C	-
				None	1-105-05BP	-
	3-Jaw	Universal	1.2598"	Insert	-	1-201-05BP-C
				None	-	1-201-05BP
	4-Jaw	Universal	1.2598"	Insert	-	1-203-05BP-C
				None	-	1-203-05BP
5C	5C	-	None	1-401-99BP	-	
			Insert	1-401-99BP-C	-	
<b>HAAS HRT-160</b>						
5"	3-Jaw	Adjustable	1.378"	Integrated	1-101-05H16	1-151-05H16
	6-Jaw	Adjustable	1.378"	Integrated	1-103-05H16	-
	5C	5C	-	Integrated	1-401-99H16	-



**HRT-160**



## 6" Chuck Diameter



CHUCK DIA	# JAWS	CHUCK TYPE	THRU-HOLE	BASEPLATE CENTERING DEVICE	STEEL	SEMI-STEEL
6"	3-Jaw	Adjustable	1.654"	Insert	1-101-06BP-C	1-151-06BP-C
				None	1-101-06BP	1-151-06BP
	6-Jaw	Adjustable	1.654"	Insert	1-103-06BP-C	1-153-06BP-C
				None	1-103-06BP	1-153-06BP
	3-Jaw	Precision	1.654"	Insert	1-105-06BP-C	-
				None	1-105-06BP	-
	3-Jaw	Universal	1.654"	Insert	-	1-201-06BP-C
				None	-	1-201-06BP
	4-Jaw	Universal	1.654"	Insert	-	1-203-06BP-C
				None	-	1-203-06BP
3-Jaw	Pneumatic	0.984"	Insert	RAP-06-C	-	
<b>HAAS HRT-160</b>						
6"	3-Jaw	Adjustable	1.654"	Integrated	1-101-06H16	1-151-06H16
	6-Jaw	Adjustable	1.654"	Integrated	1-103-06H16	1-153-06H16
	3-Jaw	Pneumatic	0.984"	Integrated	RAP-06-H16	-



**HRT-160**



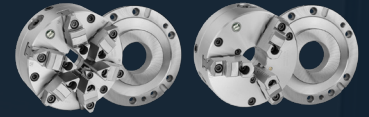
# *gator chucks*



# *gator chucks*



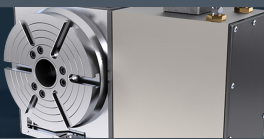
## 8" Chuck Diameter



CHUCK DIA	# JAWS	CHUCK TYPE	THRU-HOLE	BASEPLATE CENTERING DEVICE	STEEL	SEMI-STEEL
8"	3-Jaw	Adjustable	2.165"	Insert	1-101-08BP-C	1-151-08BP-C
				None	1-101-08BP	1-151-08BP
	6-Jaw	Adjustable	2.165"	Insert	1-103-08BP-C	1-153-08BP-C
				None	1-103-08BP	1-153-08BP
	3-Jaw	Precision	2.165"	Insert	1-105-08BP-C	-
				None	1-105-08BP	-
	3-Jaw	Universal	2.165"	Insert	-	1-201-08BP-C
				None	-	1-201-08BP
	4-Jaw	Universal	2.165"	Insert	-	1-203-08BP-C
				None	-	1-203-08BP
3-Jaw	Pneumatic	0.984"	Insert	RAP-08-C	-	
<b>HAAS HRT-210</b>						
8"	3-Jaw	Adjustable	2.165"	Integrated	1-101-08H21	1-151-08H21
	6-Jaw	Adjustable	2.165"	Integrated	1-103-08H21	1-153-08H21
	3-Jaw	Pneumatic	0.984"	Integrated	RAP-08-H21	-



**HRT-210**



## 10" Chuck Diameter



CHUCK DIA	# JAWS	CHUCK TYPE	THRU-HOLE	BASEPLATE CENTERING DEVICE	STEEL	SEMI-STEEL
10"	3-Jaw	Adjustable	2.992"	Insert	1-101-10BP-C	1-151-10BP-C
				None	1-101-10BP	1-151-10BP
	6-Jaw	Adjustable	2.992"	Insert	1-103-10BP-C	1-153-10BP-C
				None	1-103-10BP	1-153-10BP
	3-Jaw	Precision	2.992"	Insert	1-105-10BP-C	-
				None	1-105-10BP	-
	3-Jaw	Universal	2.992"	Insert	-	1-201-10BP-C
				None	-	1-201-10BP
	4-Jaw	Universal	2.992"	Insert	-	1-203-10BP-C
				None	-	1-203-10BP
3-Jaw	Pneumatic	2.126"	Insert	RAP-10-C	-	
<b>HAAS HRT-210</b>						
10"	3-Jaw	Adjustable	2.992"	Integrated	1-101-10H21	1-151-10H21
	6-Jaw	Adjustable	2.992"	Integrated	1-103-10H21	1-153-10H21
	3-Jaw	Pneumatic	2.126"	Integrated	RAP-10-H21	-
<b>HAAS HRT-310</b>						
10"	3-Jaw	Adjustable	2.992"	Integrated	1-101-10H31	1-151-10H31
	6-Jaw	Adjustable	2.992"	Integrated	1-103-10H31	1-153-10H31
	3-Jaw	Pneumatic	2.126"	Integrated	RAP-10-H31	-



**HRT-210**

**HRT-310**



# *gator chucks*





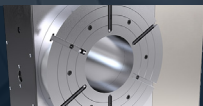
# 12" Chuck Diameter



CHUCK DIA	# JAWS	CHUCK TYPE	THRU-HOLE	BASEPLATE CENTERING DEVICE	STEEL	SEMI-STEEL
12"	3-Jaw	Adjustable	4.055"	Insert	1-101-12BP-C	1-151-12BP-C
				None	1-101-12BP	1-151-12BP
	6-Jaw	Adjustable	4.055"	Insert	1-103-12BP-C	1-153-12BP-C
				None	1-103-12BP	1-153-12BP
	3-Jaw	Precision	4.055"	Insert	1-105-12BP-C	-
				None	1-105-12BP	-
3-Jaw	Universal	4.055"	Insert	-	1-201-12BP-C	
			None	-	1-201-12BP	
4-Jaw	Universal	4.055"	Insert	-	1-203-12BP-C	
			None	-	1-203-12BP	
<b>HAAS HRT-310</b>						
12"	3-Jaw	Adjustable	4.055"	Integrated	1-101-12H31	1-151-12H31
	6-Jaw	-	-	-	1-103-12H31	1-153-12H31



HRT-310



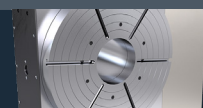
# 16" Chuck Diameter



CHUCK DIA	# JAWS	CHUCK TYPE	THRU-HOLE	BASEPLATE CENTERING DEVICE	STEEL	SEMI-STEEL
16"	3-Jaw	Adjustable	5.354"	Insert	1-101-16BP-C	1-151-16BP-C
				None	1-101-16BP	1-151-16BP
	6-Jaw	Adjustable	5.354"	Insert	1-103-16BP-C	1-153-16BP-C
				None	1-103-16BP	1-153-16BP
	3-Jaw	Precision	5.354"	Insert	1-105-16BP-C	-
				None	1-105-16BP	-
3-Jaw	Universal	5.354"	Insert	-	1-201-16BP-C	
			None	-	1-201-16BP	
4-Jaw	Universal	5.354"	Insert	-	1-203-16BP-C	
			None	-	1-203-16BP	
3-Jaw	Large Thru-Hole	8.66"	None	None	1-207-16BP	-
					<b>HAAS HRT-450</b>	
16"	3-Jaw	Adjustable	5.354"	Integrated	1-101-16H45	1-151-16H45
	6-Jaw	Adjustable	5.354"	Integrated	1-103-16H45	1-153-16H45



HRT-450



# 20" Chuck Diameter



CHUCK DIA	# JAWS	CHUCK TYPE	THRU-HOLE	BASEPLATE CENTERING DEVICE	STEEL	SEMI-STEEL
20"	3-Jaw	Adjustable	7.48"	Insert	1-101-20BP-C	1-151-20BP-C
				None	1-101-20BP	1-151-20BP
	6-Jaw	Adjustable	7.48"	Insert	1-103-20BP-C	1-153-20BP-C
None				1-103-20BP	1-153-20BP	
3-Jaw	Large Thru-Hole	12.6"	None	None	1-207-20BP	-
					<b>HAAS HRT-600</b>	
20"	3-Jaw	Adjustable	7.48"	Integrated	1-101-20H60	1-151-20H60
	6-Jaw	Adjustable	7.48"	Integrated	1-103-20H60	1-153-20H60



HRT-600

