



**Automated Jaw Pallet System  
Makes Lower Volume Automation  
Projects Flexible & Profitable**



**COMPLETE  
METALWORKING  
SOLUTIONS**

**(800) 991-4225**

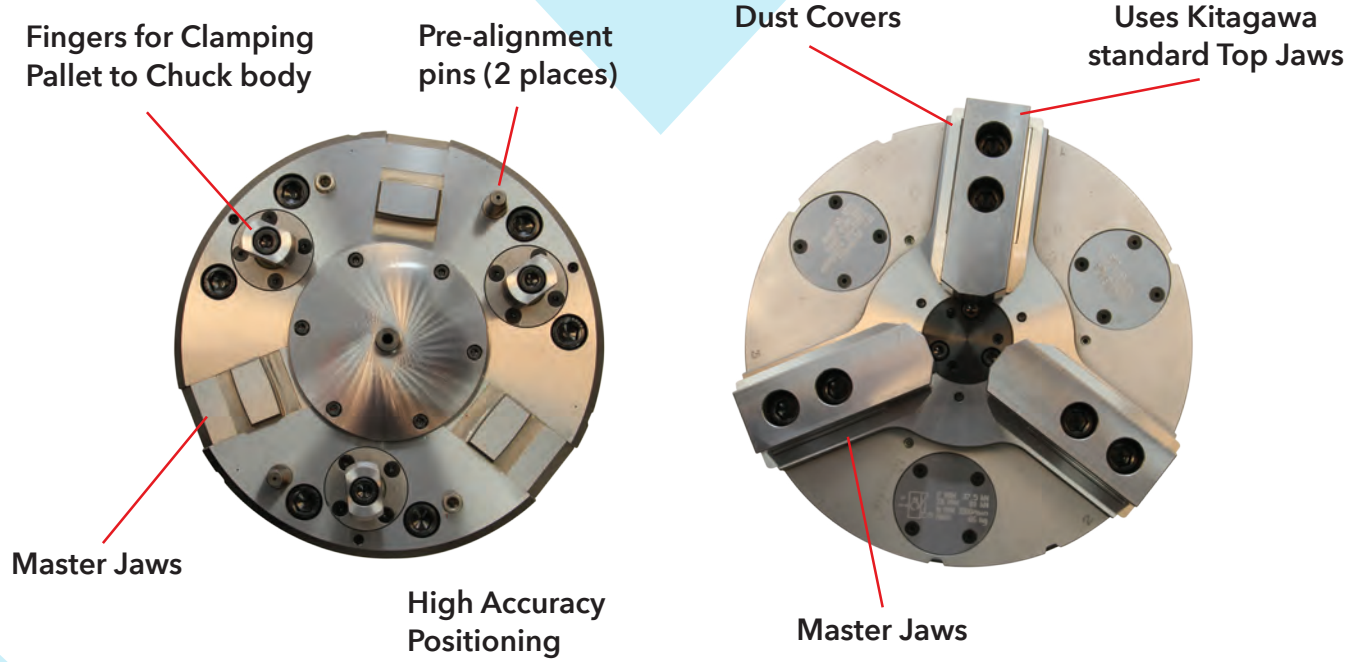
[www.ahbinc.com](http://www.ahbinc.com)

ISO Certified

[customerservice@ahbinc.com](mailto:customerservice@ahbinc.com)



# AJPS is Engineered with Kitagawa Quality & Workmanship



- Precision high accuracy positioning and repeatability of pallet to chuck body
- Designed for protection from chips and contaminants
- Compact design uses less Z axis space


## Superior Gripping Solutions Available



*Kitagawa NorthTech and Our Automation Partners  
are Moving Forward*

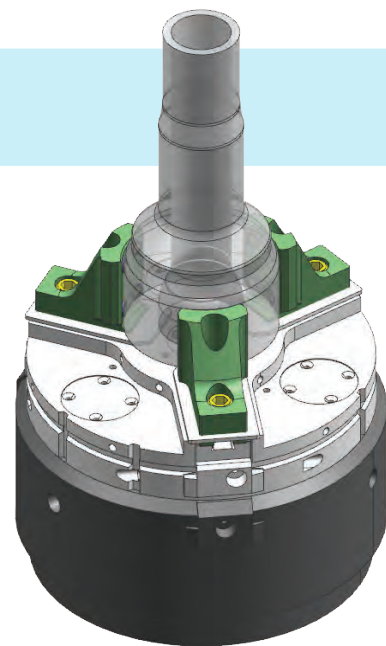


Susie is **Happy** Because Bob Just Told Her She **Doesn't** Have to Work **Overtime** on a **Low Volume**, High Mix **Job** for a Customer.



**6:00 PM** - With Kitagawa's AJPS and an Automated Robot Cell, lights out, unattended machining operations are made possible

**Parts Produced:** 180 Pieces  
**Type:** Spindles



# Robotic Automation is Finally a Viable Solution for Your Low to Moderate Machining Operations

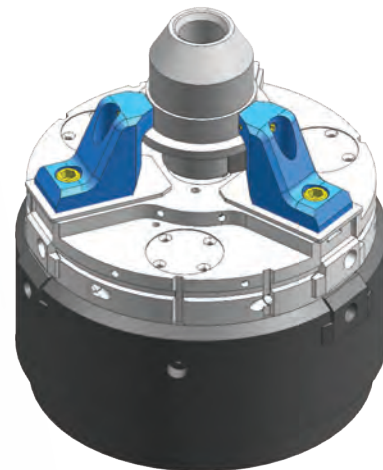


- Jaw Pallet replacing method allows you to change all 3 jaws at once by replacing entire Pallet
- Deliver your work-pieces and Jaw Pallets by Robot or Shuttle
- Flexible capabilities for automated robotic systems and continuous operations unattended
- Ideal for high mix, low volume production



**9:56 PM** - The AJPS automates workholding changeovers, providing flexibility and maximizing machining productivity

**Parts Produced: 112 Pieces**  
**Type: Nozzles**



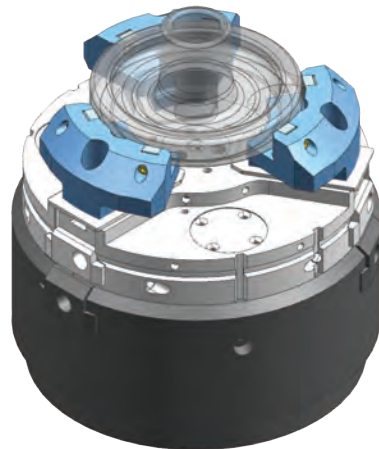


Bob Was Able to **Meet**  
His **Deadline** Thanks to  
Kitagawa's **AJPS**.  
**Bob is Very Happy.**



**2:20 AM** - AJPS continues to  
run multiple jobs consecutively  
overnight, from one to another  
for higher profits

**Parts Produced: 36 Pieces**  
**Type: Clutch Plates**



# AHB

**TOOLING & MACHINERY, INC.**

**COMPLETE METALWORKING SOLUTIONS**

**(800) 991-4225**

**[www.ahbinc.com](http://www.ahbinc.com)**

**ISO Certified**

**[customerservice@ahbinc.com](mailto:customerservice@ahbinc.com)**



301 E. Commerce Drive, Schaumburg, IL 60173

800.991.4225 | [www.kitagawa.com](http://www.kitagawa.com)