

*Productivity Multiplier . . .*  
*PMC Series*  
*Production Milling Chucks*



## PMC Production Milling Chucks

MicroCentric PMC chucks are a low profile manually actuated concentric clamping system for vertical and horizontal machining centers, milling machines, and grinders. PMC chucks integrate with tombstones and pallets to provide the ultimate in high productivity and high precision workholding.

PMC chucks are clamped and unclamped on the top face enabling more chucks to be ganged together compared to side actuated models.



### PMC Design & Features

- Concentric clamping
- Low profile square body design
- Two stage clamping - fast initial jaw stroke for large opening and primary stage to provide high clamping force
- 3.00" (80mm), 4.00" (100mm), 5.00" (125mm), and 6.00" (150mm) sizes
- 3 and 2 jaw configurations
- OD and ID clamping models



*Three Jaw Models:  
OD or ID Clamping*



*Two Jaw Models:  
OD or ID Clamping*



*Accessories: Top Jaws,  
T-wrenches, Jaw Boring Rings*



## PMC Chuck Models & Specifications

Chuck Model	Chuck Size	No Jaws	Clamp Stroke	Opening Capacity	Total Jaw Stroke	Max Input Torque	Max Clamp Force	Chuck Weight
PMC-080-3	3.15" 80mm	3	.063" 1.6mm	.252" 6.4mm	.315" 8mm	14.8 ft-lb 20 N-m	1,012 lb 4.5 kN	2.4 lb 1.1 kg
PMC-080-3/ID	3.15" 80mm	3	.063" 1.6mm	.252" 6.4mm	.315" 8mm	14.8 ft-lb 20 N-m	1,012 lb 4.5 kN	2.4 lb 1.1 kg
PMC-080-2	3.15" 80mm	2	.063" 1.6mm	.252" 6.4mm	.315" 8mm	7.4 ft-lb 10 N-m	506 lb 2.3 kN	2.4 lb 1.1 kg
PMC-100-3	3.93" 100mm	3	.071" 1.8mm	.323" 8.2mm	.394" 10mm	18.4 ft-lb 25 N-m	1,461 lb 6.5 kN	4.5 lb 2.0 kg
PMC-100-3/ID	3.93" 100mm	3	.071" 1.8mm	.323" 8.2mm	.394" 10mm	18.4 ft-lb 25 N-m	1,461 lb 6.5 kN	4.5 lb 2.0 kg
PMC-100-2	3.93" 100mm	2	.071" 1.8mm	.323" 8.2mm	.394" 10mm	11.1 ft-lb 15 N-m	877 lb 3.9 kN	4.5 lb 2.0 kg
PMC-125-3	4.92" 125mm	3	.158" 4mm	.472" 12mm	.630" 16mm	18.4 ft-lb 25 N-m	2,585 lb 11.5 kN	8.2 lb 3.7 kg
PMC-125-3/ID	4.92" 125mm	3	.158" 4mm	.472" 12mm	.630" 16mm	18.4 ft-lb 25 N-m	2,585 lb 11.5 kN	8.2 lb 3.7 kg
PMC-125-2	4.92" 125mm	2	.158" 4mm	.472" 12mm	.630" 16mm	11.1 ft-lb 15 N-m	1,550 lb 6.9 kN	8.2 lb 3.7 kg
PMC-150-3	5.91" 125mm	3	.217" 5.5mm	.571" 14.5mm	.787" 20mm	22.1 ft-lb 30 N-m	3,260 lb 14.5 kN	12.7 lb 5.8 kg
PMC-150-3/ID	5.91" 125mm	3	.217" 5.5mm	.571" 14.5mm	.787" 20mm	22.1 ft-lb 30 N-m	3,260 lb 14.5 kN	12.7 lb 5.8 kg
PMC-150-2	5.91" 125mm	2	.217" 5.5mm	.571" 14.5mm	.787" 20mm	14.8 ft-lb 20 N-m	2,170 lb 9.7 kN	12.7 lb 5.8 kg

PMC chucks include mounting screws and locating bushings.  
Top jaws and other accessories sold separately.

## PMC Top Jaws

Jaw Model	Jaws/set	Height	Width	Material
PMC/TJ-080-3	3	1.00" (25mm)	1.00" (25mm)	AISI 1018
PMC/TJ-080-2	2	1.00" (25mm)	1.00" (25mm)	AISI 1018
PMC/TJ-100-3	3	1.50" (38mm)	1.25" (32mm)	AISI 1018
PMC/TJ-100-2	2	1.50" (38mm)	1.25" (32mm)	AISI 1018
PMC/TJ-125-3	3	1.50" (38mm)	1.50" (38mm)	AISI 1018
PMC/TJ-125-2	2	1.50" (38mm)	1.50" (38mm)	AISI 1018
PMC/TJ-150-3	3	1.50" (38mm)	2.00" (51mm)	AISI 1018
PMC/TJ-150-2	2	1.50" (38mm)	2.00" (51mm)	AISI 1018

Top jaws are sold in sets.



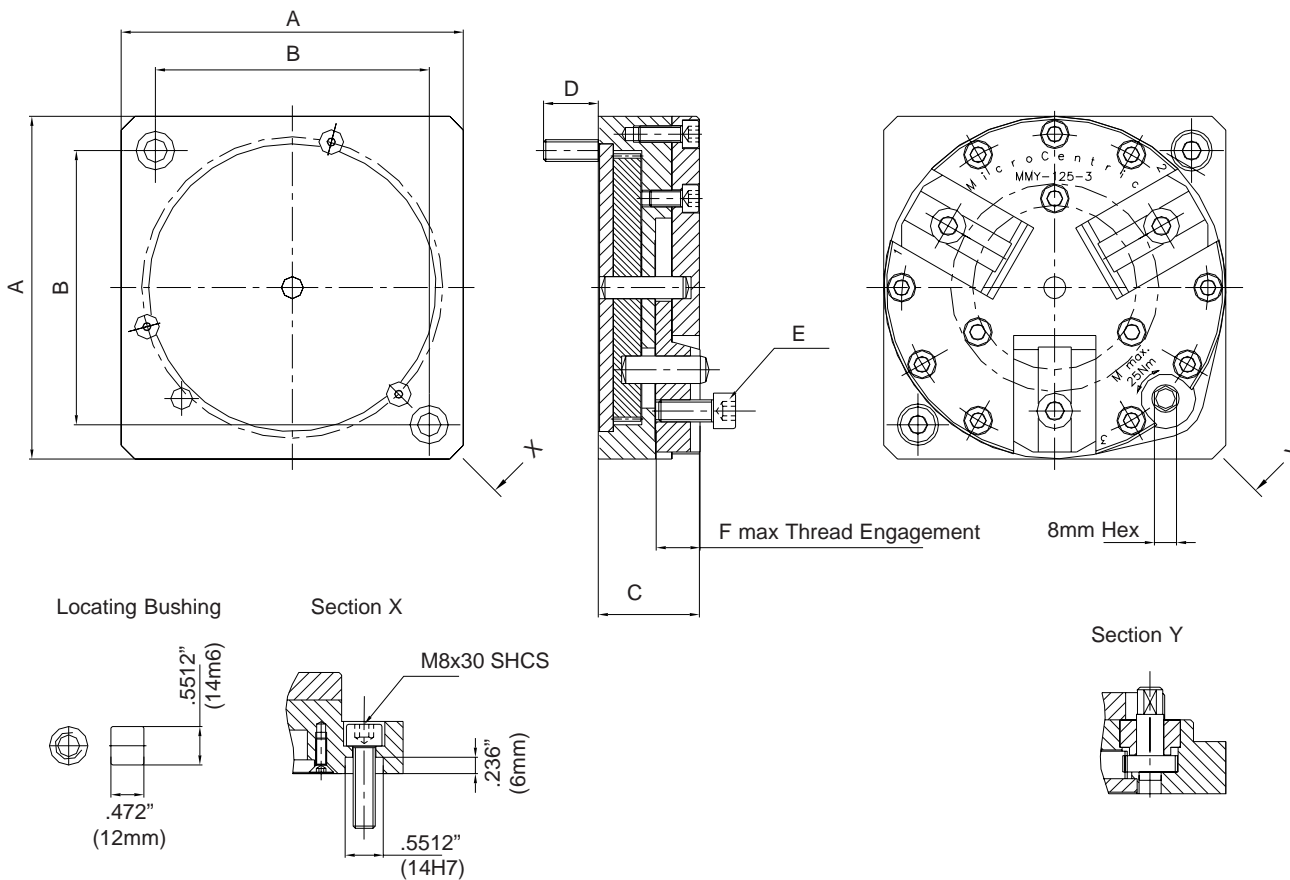
## PMC Accessories

Item	Chuck Model	Description
PMC/LR-080-3	PMC-080-3	3 Jaw Loading Ring
PMC/LR-080-2	PMC-080-2	2 Jaw Loading Ring
PMC/LR-100-3	PMC-100-3	3 Jaw Loading Ring
PMC/LR-100-2	PMC-100-2	2 Jaw Loading Ring
PMC/LR-125-3	PMC-125-3	3 Jaw Loading Ring
PMC/LR-125-2	PMC-125-2	2 Jaw Loading Ring
PMC/LR-150-3	PMC-150-3	3 Jaw Loading Ring
PMC/LR-150-2	PMC-150-2	2 Jaw Loading Ring
PMC/MB-080	PMC-080	Mounting Screw & Locating Bushing set
PMC/MB-100	PMC-100	Mounting Screw & Locating Bushing set
PMC/MB-125	PMC-125	Mounting Screw & Locating Bushing set
PMC/MB-150	PMC-150	Mounting Screw & Locating Bushing set
PMC/TW-8	PMC-080 to 150	T Handle Wrench



## Chuck Dimensions

Chuck Model	A	B	C	D	E	F
PMC-080	3.15" 80mm	2.36" 60mm	1.067" 27.1mm	.748" 19mm	M6x16mm SHCS	.394" 10mm
PMC-100	3.94" 100mm	3.15" 80mm	1.266" 32.15mm	.772" 19.6mm	M8x20mm SHCS	.512" 13mm
PMC-125	4.92" 125mm	3.94" 100mm	1.463" 37.15mm	.787" 20mm	M8x20mm SHCS	.630" 16mm
PMC-150	5.91" 150mm	4.72" 120mm	1.589" 40.1mm	.795" 20.2mm	M10x25mm SHCS	.787" 20mm



 **MicroCentric**

MicroCentric Corp • 25 So. Terminal Drive, Plainview, NY 11803 • USA  
Tel: 516-349-7220 • Fax: 516-349-9354 • e-mail: sales@MicroCentric.com

**1-800-573-1139**

[www.MicroCentric.com](http://www.MicroCentric.com)

PMC-03/09