



# ACCU-FLEX

## PUSH-ON ARBORS & CHUCKS



### VARIETY & VERSATILITY

The Push-On Arbor is an economical, durable, and accurate chucking mechanism. The simplicity of its construction provides a greater measure of accuracy at a lower cost. The piece part is simply pushed onto the arbor and gripped by its own inherent forces. There are no actuating components and therefore not subject to influences from cylinder or wrench tightening forces.

**\*Guaranteed repeatability .0002**

**IDEAL FOR INSPECTION, LOCATING, AND LIGHT MACHINING APPLICATIONS!**



**COMPLETE  
METALWORKING  
SOLUTIONS**

**(800) 991-4225**

[www.ahbinc.com](http://www.ahbinc.com)

ISO Certified

[customerservice@ahbinc.com](mailto:customerservice@ahbinc.com)

# PUSH-ON / ACCU-FLEX CHUCKS & ARBORS

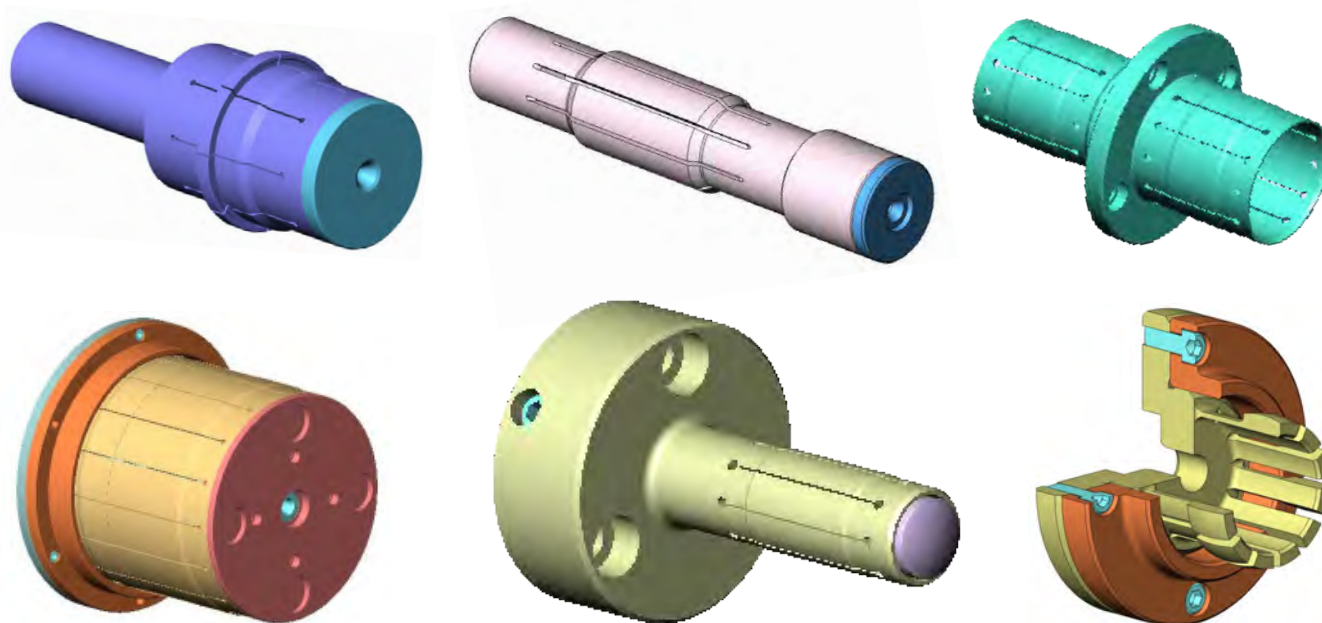
The push-on arbor is a simple slotted thin sleeve sized slightly larger than the part ID. When the part is pushed onto it, it will collapse and hold by its own inner tension.



Built of one-piece construction, ground between centers, and no moving parts proved to be an extremely accurate yet inexpensive inspection arbor. Conforming to the part is excellent for checking the ID to OD, parallelism of the part faces, and perpendicularity.

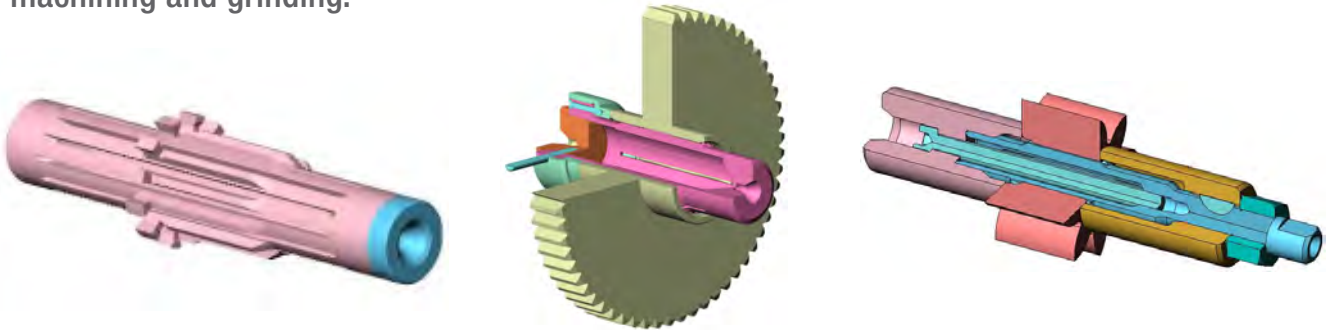
Engineered with a controlled wall thickness and number and width of slots, the grip pressure could be light or much tighter allowing for grinding or light machining in certain cases.

Designed for a specific part size, however, the tolerance of the part can vary .002 or more depending on the basic size and weight of the part.

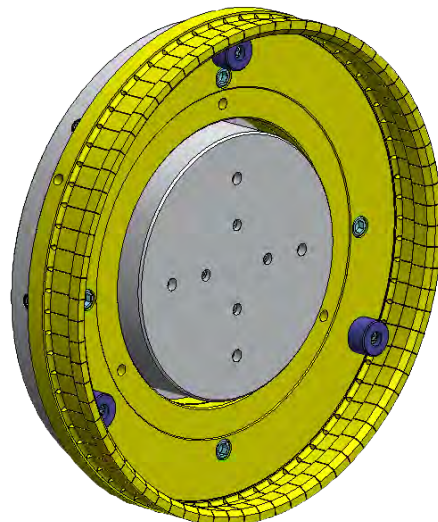
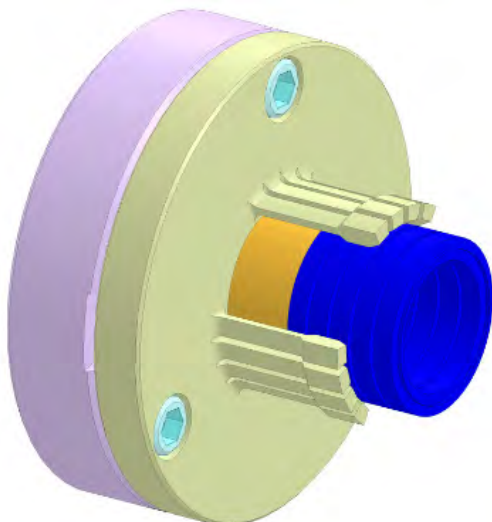
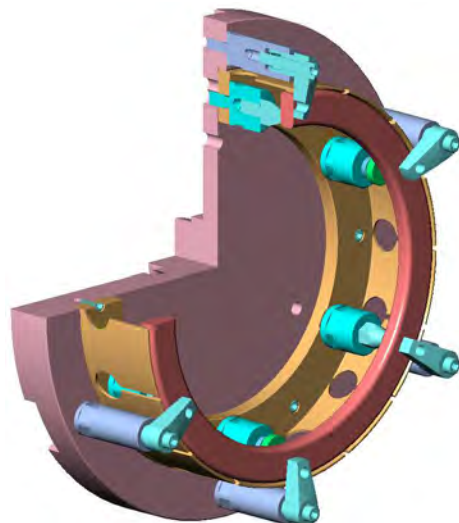
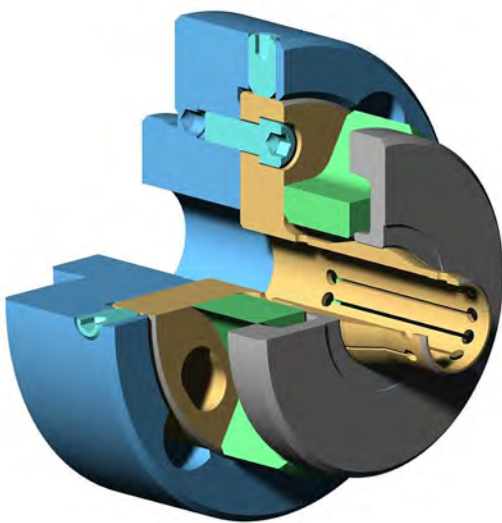


# PUSH-ON / ACCU-FLEX CHUCKS & ARBORS

The arbors can be spline ground to grip in the pitch diameter of the part for inspection to other splined areas, diameters, and faces of the part. This also provides a natural drive for light machining and grinding.



Using this same technology, arbors and chucks have been designed to grip not only in the ID but also on the OD, between centers, or flange mount. They are used to centralize with clamping devices, for part transfer, and more.

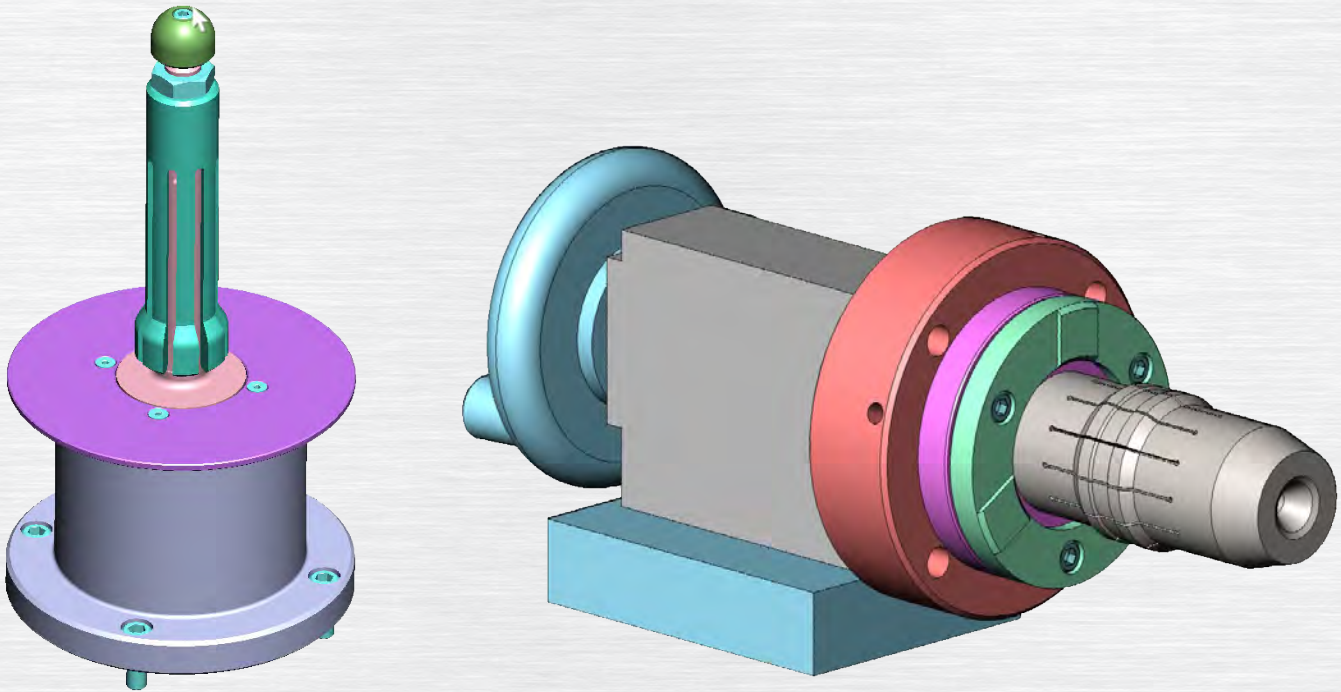


---

## PUSH-ON / ACCU-FLEX CHUCKS & ARBORS

---

Needing no air or hydraulics to operate, push-on chucks and arbors are a great value for the level of accuracy provided and are the most cost-effective to implement and maintain.



---

**Speedgrip** offers a full line of stocked standard chucks, collets, mandrels, adapters, actuators, face drivers, and pins for immediate delivery.

We also custom design solutions for your special workholding applications. We offer internal and external gripping collet chucks, diaphragm and finger chucks, between center mandrels, **Cameron** hydraulic chucks and arbors, collet chucks from our **Sabertooth** line, and standard or special drivers from our **Madison Face Driver** line.

Our workholding is versatile and ideal for turning, drilling and milling operations, gear cutting and finishing, balancing, inspection equipment, and various operations on fixture plates and tombstones.

Many applications can be fully accommodated using our off the shelf standard items.

Our engineers will custom design solutions for your special workholding applications and have a multitude of existing drawings available for your review.

---

2000 Industrial Parkway Elkhart, IN 46516 • (574) 294-1506 • [salesweb@speedgrip.com](mailto:salesweb@speedgrip.com)