



**T. Friedl Enterprises Inc.**

***TFE* LATHE WORKHOLDING ACCESSORIES**



**TOOLING & MACHINERY**

**COMPLETE METALWORKING SOLUTIONS**

**(800) 991-4225**

**[www.ahbinc.com](http://www.ahbinc.com)**

**ISO Certified**

**[customerservice@ahbinc.com](mailto:customerservice@ahbinc.com)**



## SOFT JAWS

### 1.5MM X 60° SERRATIONS

For Kitagawa, Howa, Samchully, Suga, Nikko, Matsumoto & other Chucks.

**FEATURES:**

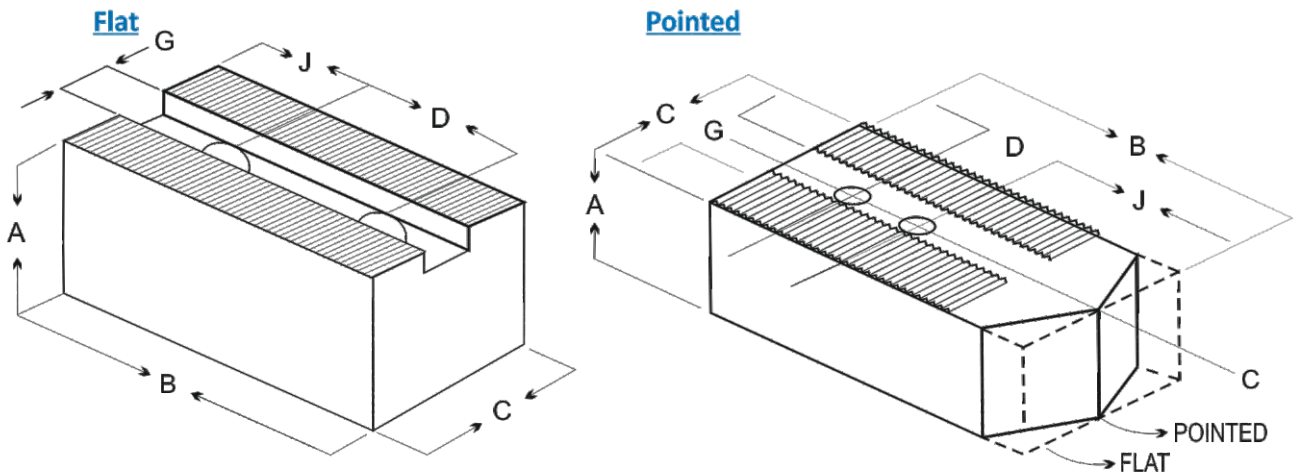
General-purpose blank top Jaws, also referred to as “long” or “offset” Jaws.

Standard steel Jaws can be case hardened after machining or left soft.

All Steel Jaws are fully ground.

Optional aluminum material reduces surface marring, ideal for chucking on finished surfaces /

Non ferrous material. All Steel Jaws are fully ground.



Critical Dimensions				(All Dimensions are in Inch)				STEEL
Chuck Dia Inch	Groove Width G	Bolt Size	Center to Center D	Hole to Front J	Width C	Length B	Height A	Part Number
4"	0.394	8MM	0.551	1.000	1.000	2.000	1.00	SCC-TF-4C-1.5
	0.394	8MM	0.551	1.000	1.000	2.000	2.00	SCC-TF-4C-2.05
5"	0.394	8MM	0.748	1.250	1.000	2.375	1.50	SCC-TF-5C-1.5
	0.394	8MM	0.713	1.250	1.000	2.375	1.50	SCC-TF-5C-1.53
6"	0.472	10MM	0.787	1.625	1.250	3.000	1.00	SCC-TF-6C-1.0
	0.472	10MM	0.787	1.625	1.250	3.000	1.50	SCC-TF-6C-1.5
	0.472	10MM	0.787	1.625	2.000	3.000	1.50	SCC-TF-6C-1.52
	0.472	10MM	0.787	1.625	1.250	3.000	2.00	SCC-TF-6C-2.0
	0.472	10MM	0.787	1.625	1.250	3.000	2.50	SCC-TF-6C-2.5
	0.472	10MM	0.787	1.625	1.250	3.000	3.00	SCC-TF-6C-3.0
	0.472	10MM	0.787	1.625	1.250	3.000	4.00	SCC-TF-6C-4.0

When ordering Steel specify “SP” for Pointed or “SF” for Flat at the end of part number.  
(example: SCC-TF-6C-1.5-SP)

When ordering Aluminum specify “AP” for Pointed or “AF” for Flat at the end of part number.  
(example: SCC-TF-6C-1.5-AP)

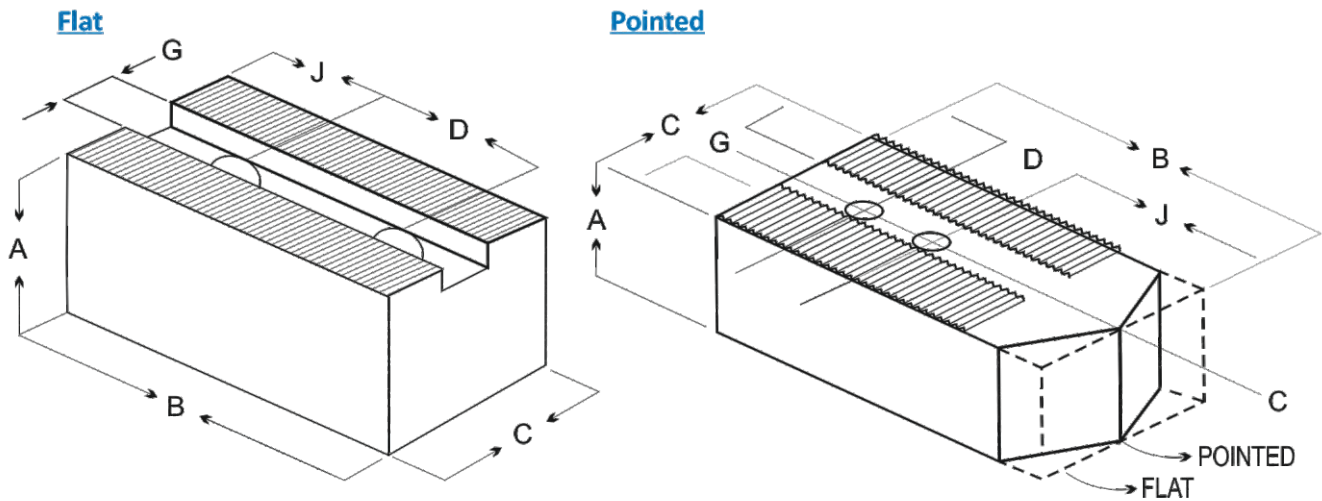
**Steel Material: AISI 1018**

**Aluminum Material: 6061-T6 Bar Stock**

## SOFT JAWS

### 1.5MM X 60° SERRATIONS

For Kitagawa, Howa, Samchully, Suga, Nikko, Matsumoto & other Chucks.



Chuck Dia Inch	Critical Dimensions			(All Dimensions are in Inch)				STEEL
	Groove Width G	Bolt Size	Center to Center D	Hole to Front J	Width C	Length B	Height A	Part Number
8"	0.551	12MM	0.984	2.000	1.500	3.75	1.50	SCC-TF-8C-1.5
	0.551	12MM	0.984	2.000	1.500	3.75	2.00	SCC-TF-8C- 2.0
	0.551	12MM	0.984	2.000	1.500	3.75	3.00	SCC-TF-8C-3.0
	0.551	12MM	0.984	2.000	1.500	3.75	4.00	SCC-TF-8C-4.0
	0.551	12MM	0.984	2.000	1.500	3.75	5.00	SCC-TF-8C-5.0
	0.551	12MM	0.984	2.250	1.500	4.00	2.00	SCC-TF-8C-2.01
	0.551	12MM	0.984	2.250	1.500	4.00	3.00	SCC-TF-8C-3.01
	0.551	12MM	0.984	2.250	1.500	4.00	4.00	SCC-TF-8C-4.01

When ordering Steel specify "SP" for Pointed or "SF" for Flat at the end of part number.  
(example: SCC-TF-8C-1.5-SP)

When ordering Aluminum specify "AP" for Pointed or "AF" for Flat at the end of part number.  
(example: SCC-TF-8C-1.5-AP)

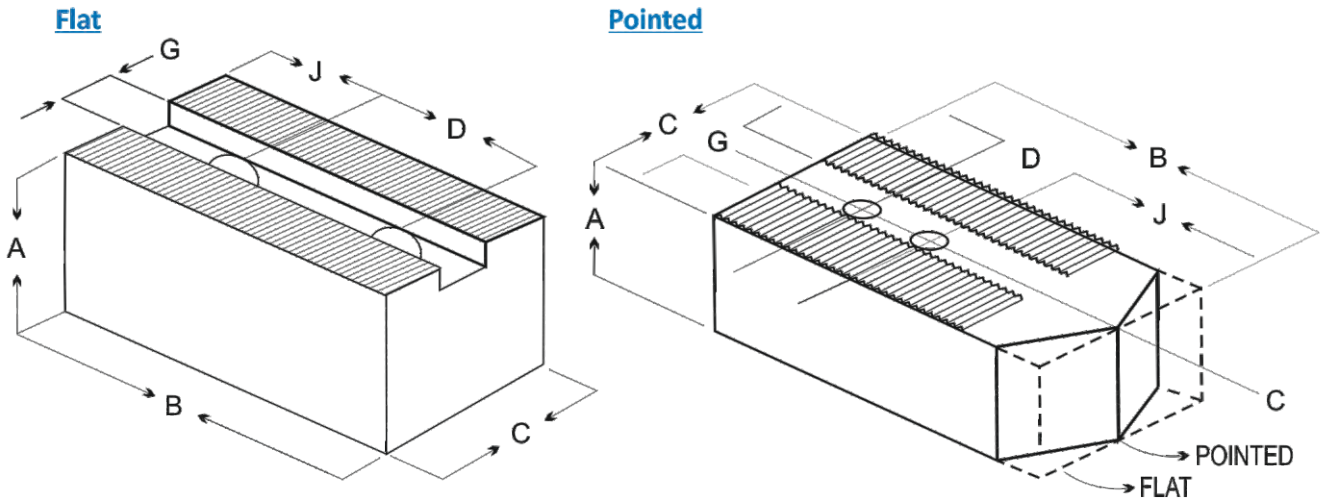
Steel Material: AISI 1018

Aluminium Material: 6061-T6 Bar Stock

## SOFT JAWS

### 1.5MM X 60° SERRATIONS

For Kitagawa, Howa, Samchully, Suga, Nikko, Matsumoto & other Chucks.



Chuck Dia Inch	Critical Dimensions			(All Dimensions are in Inch)				STEEL
	Groove Width G	Bolt Size	Center to Center D	Hole to Front J	Width C	Length B	Height A	Part Number
10"	0.630	12MM	1.181	2.375	1.50	4.50	2.00	SCC-TF-10C-2.0
	0.630	12MM	1.181	2.375	1.50	4.50	3.00	SCC-TF-10C-3.0
	0.630	12MM	1.181	2.375	1.50	4.50	4.00	SCC-TF-10C-4.0
	0.630	12MM	1.181	2.375	1.50	4.50	6.00	SCC-TF-10C-6.0
	0.630	12MM	1.181	2.875	1.50	5.00	2.00	SCC-TF-10C-2.01
	0.630	12MM	1.181	2.875	1.50	5.00	3.00	SCC-TF-10C-3.01
	0.630	12MM	1.181	2.875	2.00	5.25	2.00	SCC-TF-10C-2.05
	0.630	12MM	1.181	2.875	2.00	5.25	3.00	SCC-TF-10C-3.05
	0.630	12MM	1.181	2.875	2.00	5.25	4.00	SCC-TF-10C-4.05

When ordering Steel specify "SP" for Pointed or "SF" for Flat at the end of part number.

(example: SCC-TF-10C-3.0-SP)

When ordering Aluminum specify "AP" for Pointed or "AF" for Flat at the end of part number.

(example: SCC-TF-10C-3.0-AP)

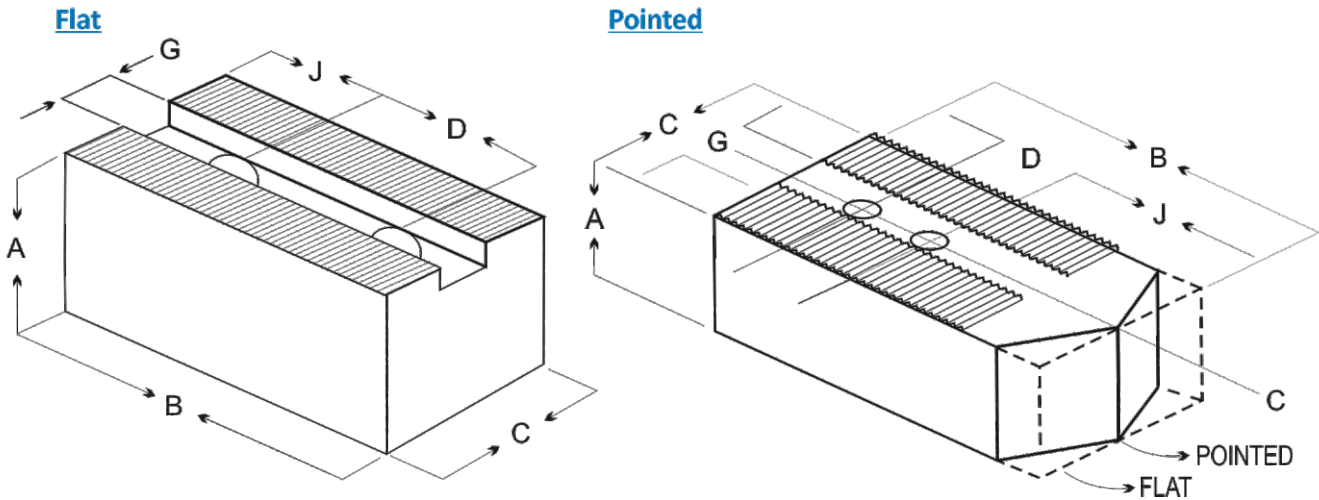
Steel Material: AISI 1018

Aluminum Material: 6061-T6 Bar Stock

## SOFT JAWS

### 1.5MM X 60° SERRATIONS

For Kitagawa, Howa, Samchully, Suga, Nikko, Matsumoto & other Chucks.



Chuck Dia Inch	Critical Dimensions			(All Dimensions are in Inch)				STEEL
	Groove Width G	Bolt Size	Center to Center D	Hole to Front J	Width Inch C	Length Inch B	Height Inch A	Part Number
12"	0.709	14MM	1.181	3.125	2.00	5.50	2.00	SCC-TF-12C-2.0
	0.709	14MM	1.181	3.125	2.00	5.50	2.50	SCC-TF-12C-2.5
	0.709	14MM	1.181	3.125	2.00	5.50	3.00	SCC-TF-12C-3.0
	0.709	14MM	1.181	3.125	2.00	5.50	4.00	SCC-TF-12C-4.0
	0.709	14MM	1.181	3.125	2.00	5.50	5.00	SCC-TF-12C-5.01
	0.709	14MM	1.181	3.125	2.00	5.50	6.00	SCC-TF-12C-6.0
	0.827	16MM	1.181	3.125	2.00	5.50	2.00	SCC-TF-12C-2.08
	0.827	16MM	1.181	3.125	2.00	5.50	2.50	SCC-TF-12C-2.58
	0.827	16MM	1.181	3.125	2.00	5.50	3.00	SCC-TF-12C-3.08
	0.827	16MM	1.181	3.125	2.00	5.50	4.00	SCC-TF-12C-4.08

When ordering Steel specify "SP" for Pointed or "SF" for Flat at the end of part number.  
(example: SCC-TF-12C-2.0-SP)

When ordering Aluminum specify "AP" for Pointed or "AF" for Flat at the end of part number.  
(example: SCC-TF-12C-2.0-AP)

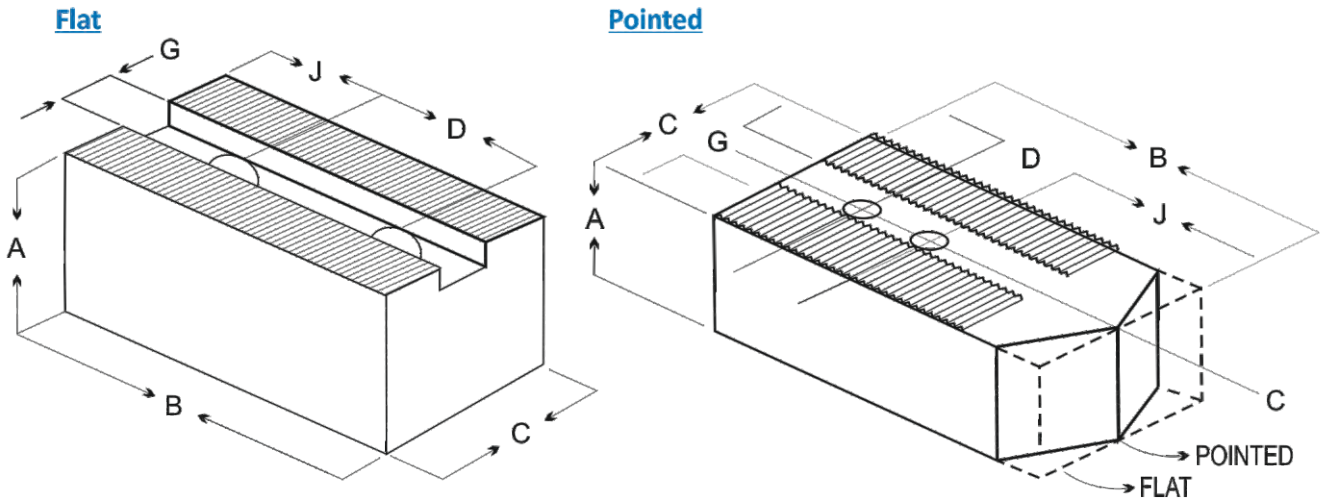
**Steel Material: AISI 1018**

**Aluminum Material: 6061-T6 Bar Stock**

## SOFT JAWS

### 1.5MM X 60° SERRATIONS

For Kitagawa, Howa, Samchully, Suga, Nikko, Matsumoto & other Chucks.



Chuck Dia Inch	Critical Dimensions			(All Dimensions are in Inch)				STEEL
	Groove Width G	Bolt Size	Center to Center D	Hole to Front J	Width Inch C	Length Inch B	Height Inch A	Part Number
15"	0.866	20MM	1.693	3.437	2.50	6.50	2.50	SCC-TF-15C-2.5
	0.866	20MM	1.693	3.437	2.50	6.50	3.00	SCC-TF-15C-3.0
	0.866	20MM	1.693	3.437	2.50	6.50	4.00	SCC-TF-15C-4.0
	0.866	20MM	1.693	3.437	2.50	6.50	6.00	SCC-TF-15C-6.0
	0.866	20MM	2.360	2.750	2.50	6.50	2.50	SCC-TF-15C-2.52
	0.866	20MM	1.693	4.437	2.50	7.50	2.50	SCC-TF-15C-2.55
	1.005	20MM	1.693	3.437	2.50	6.50	3.00	SCC-TF-15C-3.01

When ordering Steel specify "SP" for Pointed or "SF" for Flat at the end of part number.  
(example: SCC-TF-15C-2.5-SP)

When ordering Aluminum specify "AP" for Pointed or "AF" for Flat at the end of part number.  
(example: SCC-TF-15C-2.5-AP)

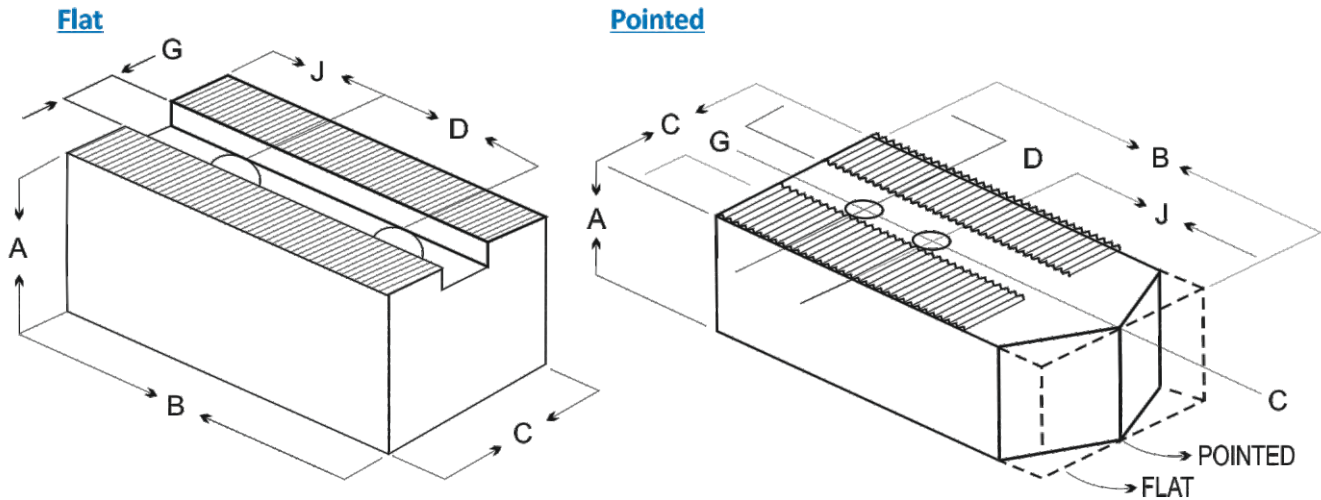
Steel Material: AISI 1018

Aluminum Material: 6061-T6 Bar Stock

## SOFT JAWS

### 1.5MM X 60° SERRATIONS

For Howa, Kitagawa & other Chucks.



Chuck Dia Inch	Critical Dimensions			(All Dimensions are in Inch)				STEEL
	Groove Width G	Bolt Size	Center to Center D	Hole to Front J	Width C	Length B	Height A	Part Number
8"	0.630	12MM	0.984	2.000	1.50	3.750	2.00	SCC-TF-HO-8C-2.0
	0.630	12MM	0.984	2.000	1.50	3.750	3.00	SCC-TF-HO-8C-3.0
10"	0.709	14MM	1.181	2.375	1.50	4.500	2.00	SCC-TF-HO-10C-2.0
12"	0.827	16MM	1.378	3.125	2.00	5.500	2.00	SCC-TF-HO-12C-2.0
	0.827	16MM	1.378	3.125	2.00	5.500	2.50	SCC-TF-HO-12C-2.50
	0.827	16MM	1.378	3.125	2.00	5.500	4.00	SCC-TF-HO-12C-4.0

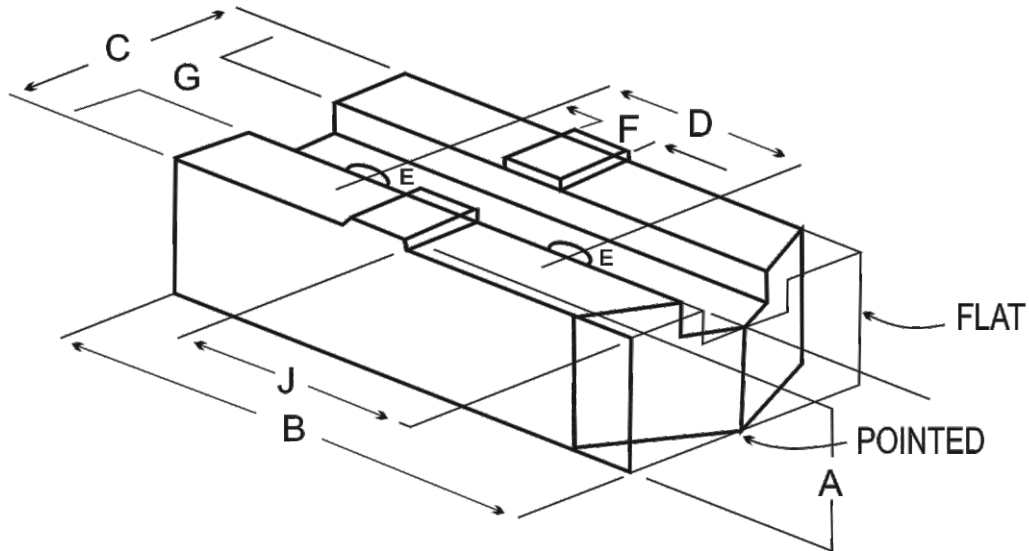
When ordering Steel specify "SP" for Pointed or "SF" for Flat at the end of part number.  
(example: SCC-TF-HO-8C-2.0-SP)

Steel Material: AISI 1018

## SOFT JAWS

### TONGUE & GROOVE (TG)

For Kitagawa, Bison, Buck, BTC, Cushman, Rohm, SMW, TMX & Yuassa Chucks



Chuck Dia Inch	Critical Dimensions				(All Dimensions are in Inch)				STEEL
	Tongue to Front J	Groove Width G	Tongue Width F	Bolt Size	Center to Center D	Width C	Length B	Height A	Part Number
6"	1.360	0.312	0.499	3/8	1.500	1.000	2.750	1.500	SCC-TF-TG-6C-1.5
	1.360	0.312	0.499	3/8	1.500	1.000	2.750	2.000	SCC-TF-TG-6C-2.0
	1.360	0.312	0.499	3/8	1.500	1.000	2.750	3.000	SCC-TF-TG-6C-3.0
	1.360	0.312	0.499	3/8	1.500	1.000	2.750	4.000	SCC-TF-TG-6C-4.0
8"	2.000	0.312	0.499	3/8	1.750	1.250	3.750	2.000	SCC-TF-TG-8C-2.0
	2.000	0.312	0.499	3/8	1.750	1.250	3.750	2.500	SCC-TF-TG-8C-2.5
	2.000	0.312	0.499	3/8	1.750	1.250	3.750	3.000	SCC-TF-TG-8C-3.0
10"	2.300	0.501	0.749	1/2	2.125	1.500	3.750	2.000	SCC-TF-TG-10C-2.0
	2.300	0.501	0.749	1/2	2.125	1.500	4.500	2.500	SCC-TF-TG-10C-2.5
	2.300	0.501	0.749	1/2	2.125	1.500	4.500	3.000	SCC-TF-TG-10C-3.0
	2.300	0.501	0.749	1/2	2.125	1.500	4.500	4.000	SCC-TF-TG-10C-4.0

When ordering Steel specify "SP" for Pointed or "SF" for Flat at the end of part number.  
(example: SCC-TF-TG-1.5-SP)

When ordering Aluminum specify "AP" for Pointed or "AF" for Flat at the end of part number.  
(example: SCC-TF-TG-1.5-AP)

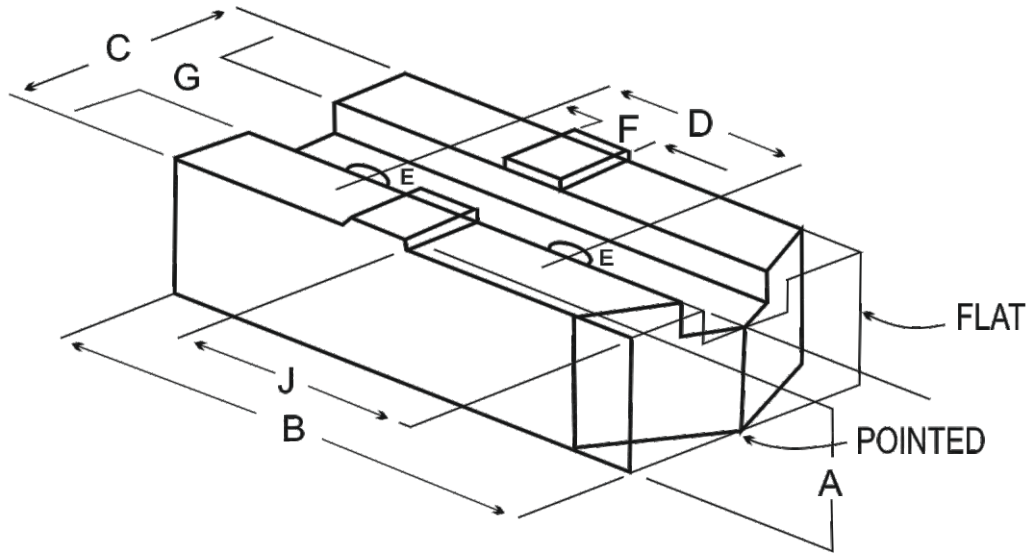
**Steel Material: AISI 1018**

**Aluminum Material: 6061-T6 Bar Stock**

## SOFT JAWS

# TONGUE & GROOVE (TG)

For Bison, Buck, BTC, Cushman, Rohm, SMW, TMX & Yuassa Chucks



Chuck Dia Inch	Critical Dimensions				(All Dimensions are in Inch)				STEEL
	Tongue to Front J	Groove Width G	Tongue Width F	Bolt Size	Center to Center D	Width Inch C	Length Inch B	Height Inch A	Part Number
12"	2.900	0.501	0.749	1/2	2.500	1.750	5.250	2.000	SCC-TF-12C-2.0
	2.900	0.501	0.749	1/2	2.500	1.750	5.250	2.500	SCC-TF-12C-2.5
	2.900	0.501	0.749	1/2	2.500	1.750	5.250	3.000	SCC-TF-12C-3.0
	2.900	0.501	0.749	1/2	2.500	1.750	5.250	4.000	SCC-TF-12C-4.0
15"	2.900	0.501	0.749	5/8	3.000	1.750	5.750	2.500	SCC-TF-15C-2.5
	3.200	0.501	0.749	3/4	3.000	2.500	6.000	4.000	SCC-TF-15C-4.06
18"	3.660	0.501	0.749	3/4	3.000	2.250	6.500	2.500	SCC-TF-18C-2.5
	3.660	0.501	0.749	3/4	3.000	2.500	6.500	2.500	SCC-TF-18C-2.52

When ordering Steel specify "SP" for Pointed or "SF" for Flat at the end of part number.  
(example: SCC-TF-12C-2.0-SP)

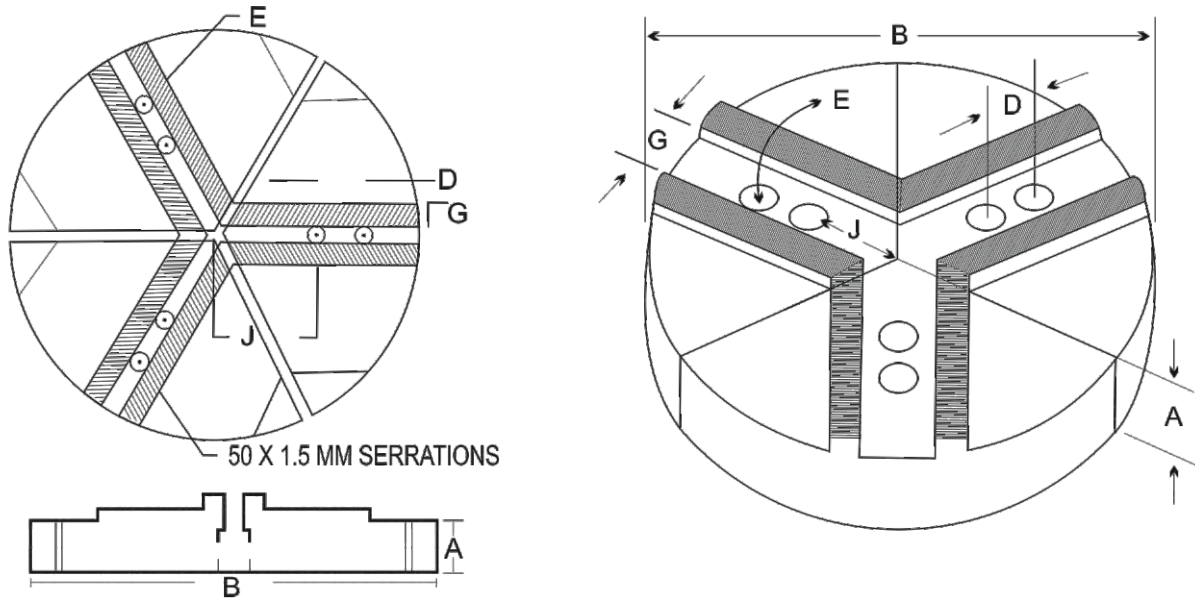
When ordering Aluminum specify "AP" for Pointed or "AF" for Flat at the end of part number.  
(example: SCC-TF-12C-2.0-AP)

Steel Material: AISI 1018

Aluminum Material: 6061-T6 Bar Stock

## FULL GRIP SOFT JAWS (ROUND JAWS)

### 1.5MM X 60° SERRATIONS



Height Inch A	Critical Dimensions			(All Dimensions are in Inch)		
	Pie Diameter B	Center to Center D	Screw Size E	Groove Width G	Hole to Front J	Part Number
2.000	6	0.787	10MM	0.472	1.625	SCC-RTF-6C-2.0
3.000	6	0.787	10MM	0.472	1.625	SCC-RTF-6C-3.0
2.000	8	0.984	12MM	0.551	2.250	SCC-RTF-8C-2.0
3.000	8	0.984	12MM	0.551	2.250	SCC-RTF-8C-3.0
4.000	8	0.984	12MM	0.551	2.250	SCC-RTF-8C-4.0
2.000	10	1.181	12MM	0.630	2.375	SCC-RTF-10C-2.0
3.000	10	1.181	12MM	0.630	2.375	SCC-RTF-10C-3.0
4.000	10	1.181	12MM	0.630	2.375	SCC-RTF-10C-4.0
2.000	12	1.181	14MM	0.709	2.875	SCC-RTF-12C-2.0
3.000	12	1.181	14MM	0.709	2.875	SCC-RTF-12C-3.0
4.000	12	1.181	14MM	0.709	2.875	SCC-RTF-12C-4.0
2.500	15	1.693	20MM	0.866	3.750	SCC-RTF-15C-2.5
4.000	15	1.693	20MM	0.866	3.750	SCC-RTF-15C-4.0

Available in Aluminum & Steel material specify "SR" for Steel & "AR" for Aluminum at the end of part number.

(example: SCC-RTF-10C-2.0-SR)

(example: SCC-RTF-10C-2.0- AR)

**Steel : AISI 1018**

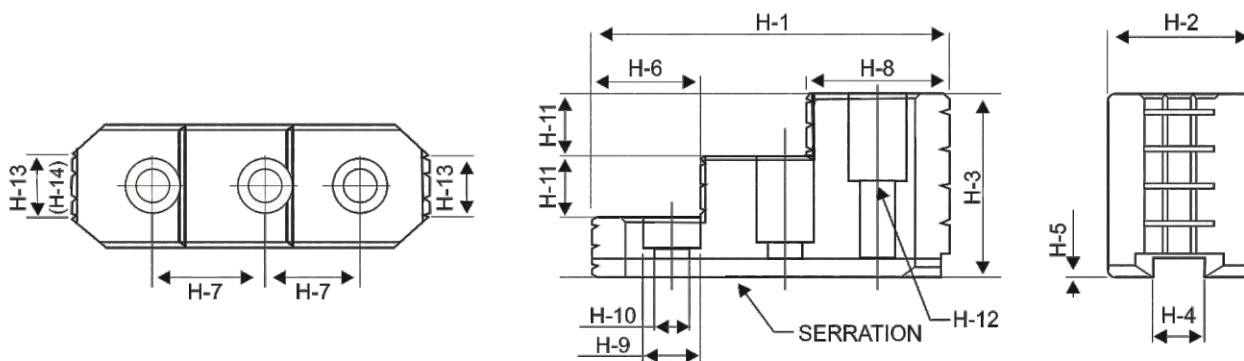
**Aluminum Mat.: 6061-T6 Round Bar Stock.**

## HARD STEP JAWS

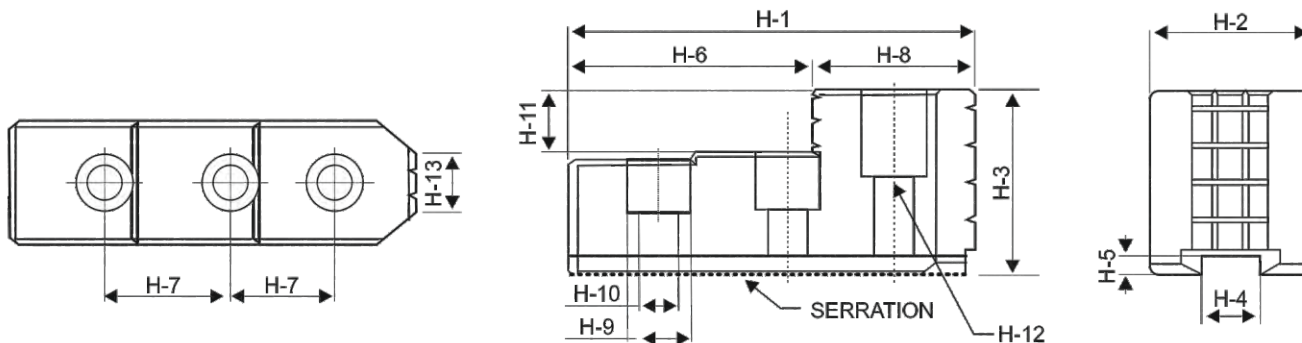
### 1.5MM X 60° SERRATIONS

For Howa, Kitagawa & other Chucks.

**A**



**B**

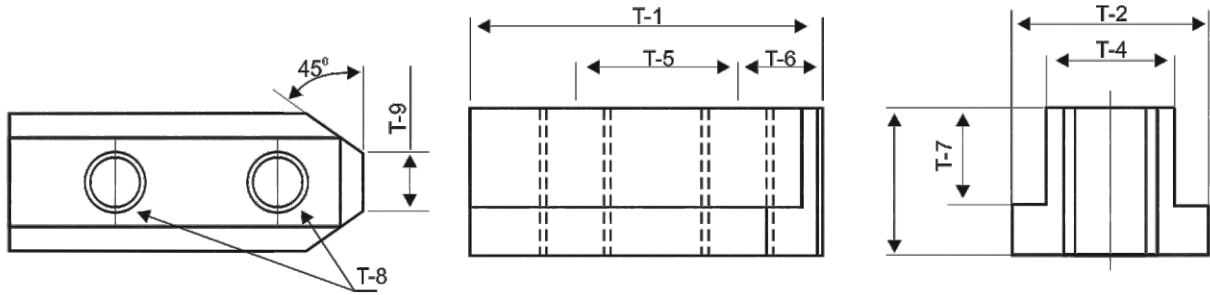


Critical Dimensions					(All Dimensions are in Inch)								STEEL		FIG	Model
H-1	H-2	H-3	H-4	H-5	H-6	H-7	H-8	H-9	H-10	H-11	H-12	H-13	Serration Pitch			
2.125	0.905	1.417	0.393	0.157	1.181	0.551	0.905	0.570	0.354	0.630	M8	0.236	1.5mm x 60°	B	SCC-5C-HJ	
2.952	1.259	1.771	0.472	0.196	1.890	0.787	1.060	0.670	0.433	0.748	M10	0.275	1.5mm x 60°	B	SCC-6C-HJ (One Step)	
2.952	1.259	1.970	0.472	0.196	1.102	0.787	1.060	0.670	0.433	0.472	M10	0.472	1.5mm x 60°	A	SCC-6CD-HJ (Two Step)	
3.740	1.380	2.204	0.551	0.196	1.496	0.984	1.380	0.787	0.531	0.590	M12	0.500	1.5mm x 60°	A	SCC-8C-HJ	
3.937	1.574	2.362	0.630	0.216	1.535	1.181	1.380	0.787	0.531	0.600	M12	0.590	1.5mm x 60°	A	SCC-10C-HJ	
4.133	1.960	2.480	0.709	0.236	1.574	1.181	1.384	0.905	0.630	0.630	M14	0.826	1.5mm x 60°	A	SCC-12C-HJ	
4.133	1.960	2.480	0.827	0.236	1.574	1.181	1.384	1.023	0.708	0.630	M16	0.826	1.5mm x 60°	A	SCC-212C-HJ	
5.866	2.440	3.285	0.866	0.315	2.480	1.693	2.047	1.260	0.827	0.787	M20	1.574	1.5mm x 60°	A	SCC-15C-HJ	
6.300	3.150	3.543	0.984	0.354	4.134	1.969	2.165	1.260	0.827	1.574	M20	2.165	3.0mm x 60°	B	SCC-21C-HJ	

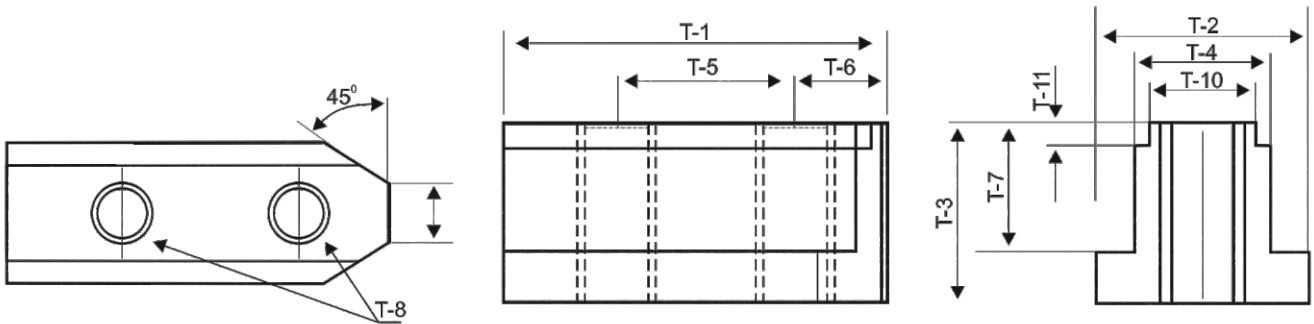
Steel Material: FORGED 20MNCR5

## T - NUTS

### A



### B



Critical Dimensions						(All Dimensions are in Inch)				
T-1	T-2	T-3	T-4	T-5	T-6	T-7	T-8	T-9	FIG	Model
1.023	0.590	0.590	0.393	0.551	0.236	0.374	M8	0.196	A	SCC-5C-TN
1.417	0.689	0.728	0.472	0.787	0.325	0.433	M10	0.315	A	SCC-6C-TN
1.850	0.807	0.807	0.551	0.984	0.433	0.472	M12	0.472	A	SCC-8C-TN
2.086	0.905	0.866	0.630	1.181	0.472	0.531	M12	0.472	A	SCC-10C-TN
2.165	1.161	1.102	0.826	1.181	0.472	0.630	M16	0.512	A	SCC-212C-TN
2.165	1.161	1.102	0.709	1.181	0.472	0.630	M14	0.512	A	SCC-12C-TN
3.150	1.320	1.811	0.826	1.693	0.709	1.141	M20	0.590	B	SCC-15CD-TN
3.937	1.476	1.771	0.984	2.362	0.787	1.023	M20	0.630	A	SCC-21CS-TN For Soft Jaw
3.543	1.476	1.771	0.984	1.968	0.787	1.023	M20	0.630	A	SCC-21CH-TN For Hard Jaw

Steel Material : AISI 1045

## TYPE C TURRET BUSHING

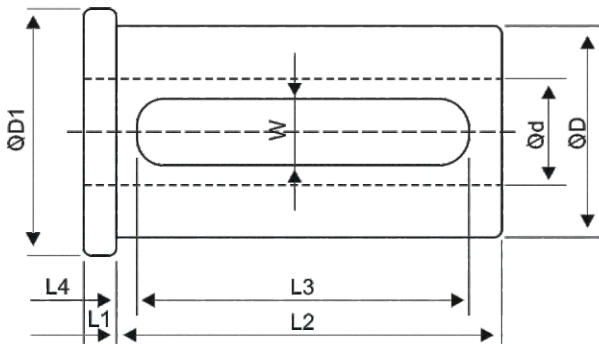


FIG. 1

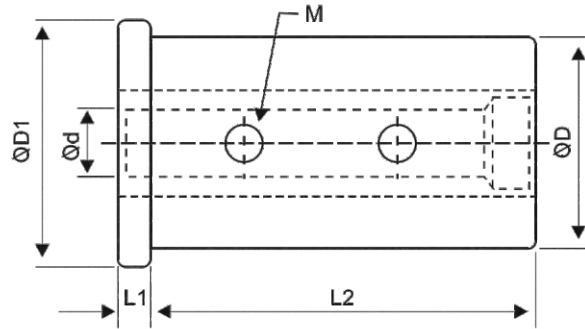


FIG. 2

(All Dimensions are in Inch)

Part No.	Size	ODØD	Bore ØD	ØD1	W	L1	L2	L3	M (Tread)	FIG
SCC-TSLI0340516225	Ø3/4" X ID 5/16"	3/4"	5/16"	1"	-	1/4"	2"	-	3/16"	1
SCC-TSLI0340038225	Ø3/4" X ID 3/8"	3/4"	3/8"	1"	-	1/4"	2"	-	3/16"	1
SCC-TSLI0340012225	Ø3/4" X ID 1/2"	3/4"	1/2"	1"	3/8"	1/4"	2"	1 1/2"	-	21
SCC-TSLI0015160300	Ø1" X ID 5/16"	1"	5/16"	1 1/4"	-	1/4"	2 3/4"	-	1/4"	1
SCC-TSLI0010380300	Ø1" X ID 3/8"	1"	3/8"	1 1/4"	-	1/4"	2 3/4"	-	1/4"	1
SCC-TSLI0010120300	Ø1" X ID 1/2"	1"	1/2"	1 1/4"	-	1/4"	2 3/4"	-	1/4"	1
SCC-TSLI0010580300	Ø1" X ID 5/8"	1"	5/8"	1 1/4"	7/16"	1/4"	2 3/4"	2 3/8"	-	2
SCC-TSLI0010340300	Ø1" X ID 3/4"	1"	3/4"	1 1/4"	7/16"	1/4"	2 3/4"	2 3/8"	-	2
SCC-TSLI1250380350	Ø1 1/4" X ID 3/8"	1 1/4"	3/8"	1.5"	-	1/4"	3 1/4"	-	1/4"	1
SCC-TSLI1250120350	Ø1 1/4" X ID 1/2"	1 1/4"	1/2"	1.5"	-	1/4"	3 1/4"	-	5/16"	1
SCC-TSLI1250580380	Ø1 1/4" X ID 5/8"	1 1/4"	5/8"	1.5"	7/16"	1/4"	3 1/4"	2 3/4"	-	2
SCC-TSLI1250340350	Ø1 1/4" X ID 3/4"	1 1/4"	3/4"	1.5"	7/16"	1/4"	3 1/4"	2 3/4"	-	2
SCC-TSLI1250780350	Ø1 1/4" X ID 7/8"	1 1/4"	7/8"	1.5"	7/16"	1/4"	3 1/4"	2 3/4"	-	2
SCC-TSLI1250010350	Ø1 1/4" X ID 1"	1 1/4"	1"	1.5"	7/16"	1/4"	3 1/4"	2 3/4"	-	2
SCC-TSLI1500383625	Ø1 1/2" X ID 3/8"	1 1/2"	3/8"	1 7/8"	-	1/4"	3 3/8"	3"	1/4"	1
SCC-TSLI1500123625	Ø1 1/2" X ID 1/2"	1 1/2"	1/2"	1 7/8"	-	1/4"	3 3/8"	3"	5/16"	1
SCC-TSLI1500583625	Ø1 1/2" X ID 5/8"	1 1/2"	5/8"	1 7/8"	1/2"	1/4"	3 3/8"	3"	-	2
SCC-TSLI1500343625	Ø1 1/2" X ID 3/4"	1 1/2"	3/4"	1 7/8"	1/2"	1/4"	3 3/8"	3"	-	2
SCC-TSLI1500783625	Ø1 1/2" X ID 7/8"	1 1/2"	7/8"	1 7/8"	1/2"	1/4"	3 3/8"	3"	-	2
SCC-TSLI1500013625	Ø1 1/2" X ID 1"	1 1/2"	1"	1 7/8"	1/2"	1/4"	3 3/8"	3"	-	2
SCC-TSLI1501253625	Ø1 1/2" X ID 1/4"	1 1/2"	1 1/4"	1 7/8"	1/2"	1/4"	3 3/8"	3"	-	2
SCC-TSLI0201243125	Ø2" X ID 1/2"	2"	1/2"	2 1/4"	-	5/16"	4"	-	5/16"	1
SCC-TSLI0205843125	Ø2" X ID 3/8"	2"	5/8"	2 1/4"	1/2"	5/16"	4"	3 5/8"	-	2
SCC-TSLI0203443125	Ø2" X ID 3/4"	2"	3/4"	2 1/4"	1/2"	5/16"	4"	3 5/8"	-	2
SCC-TSLI0207843125	Ø2" X ID 7/8"	2"	7/8"	2 1/4"	1/2"	5/16"	4"	3 5/8"	-	2
SCC-TSLI0200143125	Ø2" X ID 1"	2"	1"	2 1/4"	1/2"	5/16"	4"	3 5/8"	-	2
SCC-TSLI0212543125	Ø2" X ID 1/2"	2"	1 1/4"	2 1/4"	1/2"	5/16"	4"	3 5/8"	-	2
SCC-TSLI0215043125	Ø2" X ID 1/2"	2"	1 1/2"	2 1/4"	1/2"	5/16"	4"	3 5/8"	-	2
SCC-TSLI0217543125	Ø2" X ID 3/4"	2"	1 3/4"	2 1/4"	1/2"	5/16"	4"	3 5/8"	-	2
SCC-TSLI02503448125	Ø2 1/2" X ID 3/4"	2 1/2"	3/4"	2 11/16"	9/16"	5/16"	4 1/2"	4 1/8"	-	2
SCC-TSLI02507848125	Ø2 1/2" X ID 7/8"	2 1/2"	7/8"	2 11/16"	9/16"	5/16"	4 1/2"	4 1/8"	-	2
SCC-TSLI02500148125	Ø2 1/2" X ID 1"	2 1/2"	1"	2 11/16"	9/16"	5/16"	4 1/2"	4 1/8"	-	2
SCC-TSLI02512548125	Ø2 1/2" X ID 1 1/4"	2 1/2"	1 1/4"	2 11/16"	9/16"	5/16"	4 1/2"	4 1/8"	-	2
SCC-TSLI02515048125	Ø2 1/2" X ID 1 1/2"	2 1/2"	1 1/2"	2 11/16"	9/16"	5/16"	4 1/2"	4 1/8"	-	2
SCC-TSLI02517548125	Ø2 1/2" X ID 1 3/4"	2 1/2"	1 3/4"	2 11/16"	9/16"	5/16"	4 1/2"	4 1/8"	-	2
SCC-TSLI02500248125	Ø2 1/2" X ID 2"	2 1/2"	2"	2 11/16"	9/16"	5/16"	4 1/2"	4 1/8"	-	2
SCC-TSLI02522548125	Ø2 1/2" X ID 2 1/4"	2 1/2"	2 1/2"	2 11/16"	9/16"	5/16"	4 1/2"	4 1/8"	-	2

Steel Material: 20MNCRS

## JAW BORING RINGS (BR - TYPE)

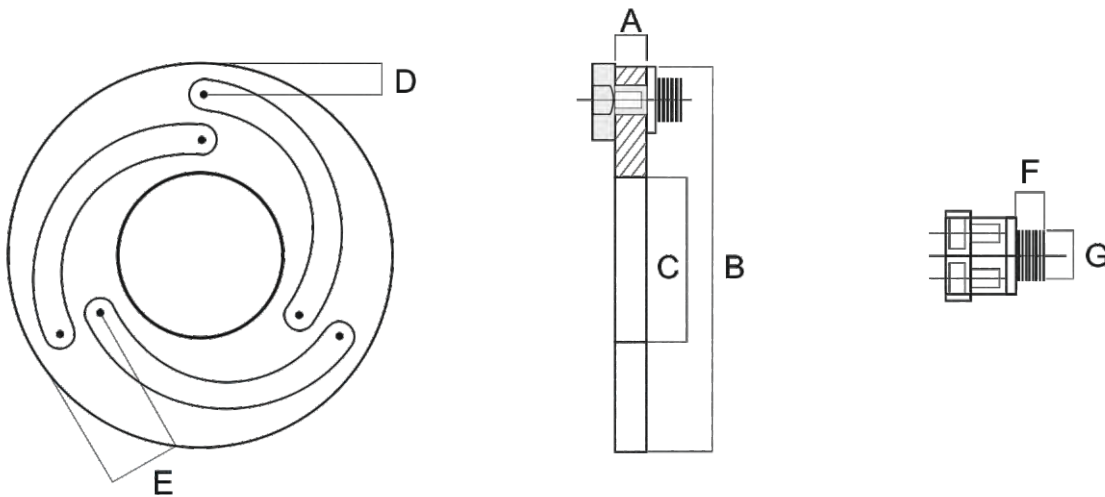


**FEATURE:**

For Precision Boring of Soft Jaws

**The Operation process is as under :**

1. Set the Jaw for correct position
2. Adjust the Jaw Boring Rings to fit the bolt holes
3. Lock the chuck to clamp the Jaw Boring rings
4. Machine the required size
5. Unlock the chuck

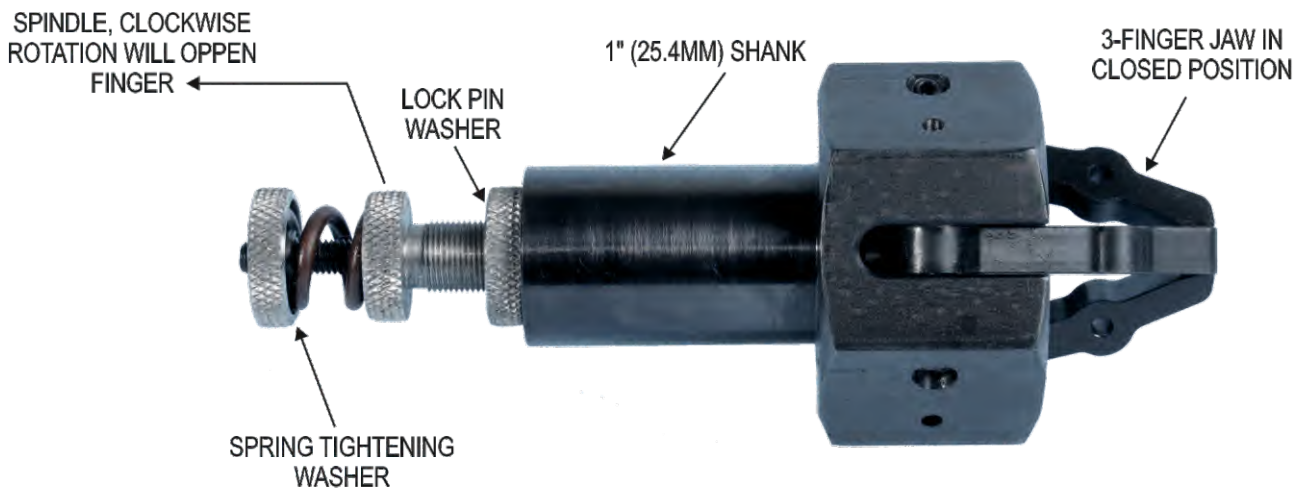


Product	Dimensions in MM							Weight (kg)
	A	B	C	D	E	F	G	
SCC-TF-BR-5"	12	140	60	12	28	9	13	1.2
SCC-TF-BR-6"	12	168	80	12	32	9	16.5	1.5
SCC-TF-BR-8"	12	218	115	15	36	9	18.5	2.4
SCC-TF-BR-10"	12	258	150	17	40	9	18.5	3.1
SCC-TF-BR-12"	15	316	188	21	50	9	22.5	5.4
SCC-TF-BR-15"	20	380	230	23	52	16	31	10.1

**Steel Material : AISI 1045**

## SMART BAR PULLER

- Assume 3 fingers Jaws in closed position.
  - Open lock pin washer in an anti clockwise direction.
  - Spindle is to be rotated in clockwise direction to open 3 fingers Jaws for desire dia. (Slightly lower then clamping diameter)
  - Spring and spring tightening washer is used for increasing clamping pressure. (Apply enough pressure by Human finger only)
  - Finally tight lock pin washer with shank.
- 
- Shank dia is available in 3/4", 20 mm, 25 mm and 1".
  - Easy to use.
  - Light in weight.
  - Hardened Jaws are self centred.
  - Gripping range is from 4 mm to 40 mm
  - Compact design specially for smaller machines
  - Jaw hardness is 52 to 55 HRC



**Steel Material : AISI 1045**



**T Friedl Enterprises Inc.**

E-mail: [cnctools@tfriedl.com](mailto:cnctools@tfriedl.com)

Ph No:# 416-321-0770

## HEAVY DUTY BAR PULLERS

### SQUARE SHANK TYPE



**SIZE:**

19MM Square,

20MM Square,

25MM Square.

---

**STANDARD BAR** Pulling range is Diameter 4 mm to 70 mm

**JUMBO BAR** Pulling range is Diameter 55 mm to 118 mm

**MAXIMUM BAR** length recommended 1 meter.

---

**ADVANTAGES OF OUR BAR PULLERS:**

1. Gripping Jaws are replaceable when worn out
  2. Easy to set up on CNC Lathe machine
  3. Increase productivity
  4. Large spring provides strong gripping force
- 

Steel Material : AISI 1045

**ROUND SHANK AVAILABLE ON REQUEST**



**T Friedl Enterprises Inc.**

📍 2235 Hammond Drive, Unit A  
Schaumburg, IL 60173 | USA

☎ 416-321-0770

✉ [cnctools@tfriedl.com](mailto:cnctools@tfriedl.com)

🌐 [www.tfriedl.com](http://www.tfriedl.com)