

AHB

TOOLING & MACHINERY

COMPLETE METALWORKING SOLUTIONS

(800) 991-4225

www.ahbinc.com

ISO Certified

customerservice@ahbinc.com



PROMOTIONS

Valid from July 1st to December 15th, 2025

2nd half
2025



3D PRESSED-IN CHIPBREAKER SERIES DEDICATED FOR TURNING SMALL PARTS

JP Chipbreaker, first choice chipbreaker for high precision finishing

JS Chipbreaker, first choice chipbreaker for finish cutting

BUY 30 inserts

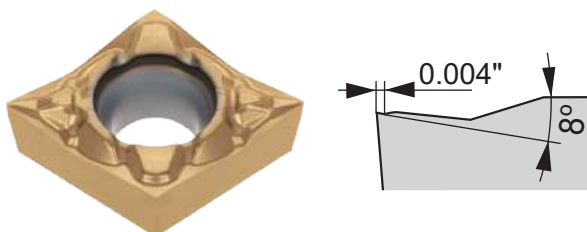
AND

GET 10 corresponding
inserts

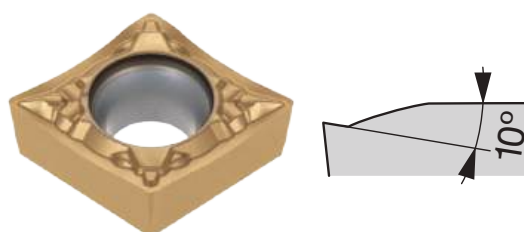
FREE
of charge!
Promo Code: TG239

Available Grades: SH7025, SH725, SH730, AH6225,
AH8015, AH725, NS9530, KS05F and AT9530

JP Chipbreaker



JS Chipbreaker



- Stable chip control across wide feed and D.O.C. ranges
- Prevents chip nesting, vibration, and burrs
- Enhances part quality and shop productivity
- Versatile geometry for broad application use

- Light cutting action with excellent chip control
- Steep edge angle reduces cutting load
- Unique protrusion manages chip flow across all depths

e-catalog



INNOVATIVE GROOVING TOOLS WITH 4 CUTTING-EDGE INSERTS

The ground insert clamps securely into a unique insert pocket, ensuring high rigidity and repeatability. It is paired with high-productivity PVD grades such as AH7025, AH8005, and AH6235

BUY 10 inserts

AND

GET 1 corresponding toolholder at

60 %
additional discount!
Promo Code: TG241

BUY 10 inserts

AND

GET 1 corresponding CHP toolholder at

40 %
additional discount!
Promo Code: TG241

Inserts (Grades AH7025, AH8005 and AH6235):

TCL27/38

TCS27

TCM27

Toolholder:

STCR/L

STCR/L-CHP



e-catalog



NEW SMALL-SIZE DOUBLE-ENDED INSERTS FOR INTERNAL GROOVING

Optimized screw placement boosts clamping strength and chatter resistance, while larger pockets improve chip evacuation and internal coolant enhances performance.

BUY 20 inserts

AND

GET 1 modular head or toolholder

FREE
of charge!
Promo Code: TG240

BUY 20 inserts

AND

GET 1 corresponding CHP toolholder at

50 %
additional discount!
Promo Code: TG240

Inserts:

DGS*S (AH725, SH7025)

DTR*S (AH7025)

STV*S (AH725)

Toolholder:

CTIR**S

Modular head:

S-CTIRS-H (BoreMeister)

QC-JTTER/LS (ModuMiniTurn)

CTIR**S

S-CTIRS-H

QC-JTTER/LS



DGS*S

Lower cutting force and superior sharpness
CW = 0.079" - 0.118"
(2 - 3 mm)



DTR*S

Full radius type
CW = 0.079" - 0.118"
(2 - 3 mm)



STV*S

For profiling applications

e-catalog



VERSATILE SHOULDER MILLING CUTTER WITH UNIQUE V-SHAPED INSERT BOTTOM FOR MAXIMUM PRODUCTIVITY

Unmatched stability across all materials, with an innovative clamping system

BUY 10 inserts per
AND pocket UP TO MAX 50 INSERTS
GET 1 Cutter

FREE
of charge!

Size 12 Promo Code: TG246
Size 18 Promo Code: TG247

Limited up to diameter 5" (125 mm)

Inserts (Grades: AH3225, AH3135, AH8015,
AH120, AH130, T1215, T3225 and KS05F):

AV*T12, AV*T18

Cutter bodies:

Bore type:

TPAV**

DC = $\varnothing 1.5''$ - $\varnothing 5''$
($\varnothing 40$ - $\varnothing 125$ mm)

Shank type:

EPAV**

DC = $\varnothing 0.625''$ - $\varnothing 1.250''$
($\varnothing 12$ - $\varnothing 32$ mm)

Modular type:

HPAV**-M (TungFlex connection)

DC = $\varnothing 10$ - $\varnothing 40$ mm

HPAV06-S (TungMeister connection)

DC = $\varnothing 10$ - $\varnothing 16$ mm



AV*T12
APMX:
0.453" (11.5 mm)



AV*T18
APMX:
0.650" (16.5 mm)



e-catalog



Member MC Group
Tungaloy

HIGH PRODUCTIVE AND COST-EFFECTIVE SHOULDER MILLING CUTTER

Economical shoulder mill with an innovative 6-edged geometry offers maximum performance in various applications

BUY 10 inserts per pocket
AND pocket UP TO MAX 50 INSERTS
GET 1 Cutter

FREE
of charge!

Size 07 Promo Code: T6248
Size 12 Promo Code: T6249

Limited up to diameter 5" (125 mm)

Insert (Grades: AH3225, AH3135, AH120, T1215, T3225):

TN MU07-MJ, TN*U12-MJ, TN MU12-NMJ

Cutter bodies:

Bore type:

TPTN07/12

DCX = $\varnothing 2''$ - $\varnothing 5''$

($\varnothing 40$ - $\varnothing 125$ mm)

Shank type:

EPTN07/12

DCX = $\varnothing 0.750''$ - $\varnothing 1.50''$

($\varnothing 18$ - $\varnothing 40$ mm)



TN MU07-MJ
with built-in wipers
APMX = 0.256"
(6.5 mm)



TN GU12-MJ
with built-in wipers
APMX = 0.433"
(11 mm)



TN MU12-R-MJ
Radius insert
APMX = 0.433"
(11 mm)



TN MU12-NMJ
Serrated insert
APMX = 0.433"
(11 mm)



e-catalog



Member IMC Group
Tungaloy

HIGH FEED MILLING CUTTERS ENABLING LONG OVERHANG APPLICATIONS AND EXTENDED TOOL LIFE

Optimal depth of cut can be selected in machining various work materials

BUY 10 inserts per
AND pocket UP TO MAX 50 INSERTS
GET 1 Cutter

FREE
of charge!
Promo Code: TG243

Limited up to diameter 5" (125 mm)

Inserts (Grades: AH3225, AH3135, AH120, AH130 AH8015):

SWMT09/15ZER
SWMT09/15UER
SWMW09ZSR
SWMW09/15USR

Cutter bodies:

Bore type:

TXSW09/15

DCX = $\phi 1.50$ " - $\phi 5$ " ($\phi 40$ - $\phi 125$ mm)

Shank type:

EXSW09

DCX = $\phi 1.00$ " - $\phi 1.25$ " ($\phi 25$ - $\phi 32$ mm)

Modular type:

HXSW09 (TungFlex connection)

DCX = $\phi 25$ - $\phi 32$ mm



SWMT09/15ZER**
APMX:
SWMT09**ZER: 0.059"
(1.5 mm)
SWMT15**ZER: 0.098"
(2.5 mm)



SWMW09ZSR
APMX: 0.059"
(1.5mm)



SWMT09/15UER**
APMX:
SWMT09**UER: 0.039"
(1 mm)
SWMT15**UER: 0.078"
(2 mm)



SWMW09/15USR
APMX:
SWMW09**USR : 0.039"
(1 mm)
SWMW15**USR : 0.078"
(2 mm)



e-catalog



EXCHANGEABLE HEAD DRILL SYSTEM FOR SUPERIOR DRILLING PERFORMANCE AND LONG TOOL LIFE

Quick drill tip change for reduced machine downtime.

Tool inventory and management costs are significantly reduced as there is no need for regrinding.

BUY 4 drill heads

AND

GET 1 drill body at
UP TO 3.5xD

50 %
additional discount!

Promo Codes:

1.5-2xD: TG251

3-3.5xD: TG252

5-6xD: TG253

8xD: TG254

Modular: TG255

Inch Chamfering: TG256

BUY 6 drill heads

AND

GET 1 drill body at
UP TO 6xD

50 %
additional discount!

Drill heads (Grades: AH725, AH9130, KS15F):

DMP, DMC, DMF, DMH, DMN, DMM

Drill bodies:

TID-F (1.5xD, 3xD, 5xD, 8xD)

TID-R (2xD, 3.5xD, 6xD, 8xD)

TIDC (3xD, 5xD)

BUY 8 drill heads

AND

GET 1 drill body at
UP TO 8xD

50 %
additional discount!

Modular drill bodies:

TID-M (2xD, 3xD)

TID-S (2xD)

TID-L-A-M

e-catalog



DRILL HEADS LINEUP



DMP

Drill dia.:
ø0.236" - ø1.020"
(ø6 - ø25.9 mm)

General purpose drilling
head ideal for various drilling
applications



DMC

Drill dia.:
ø0.236" - ø1.020"
(ø6 - ø25.9 mm)

High-precision head with double
margin and self-centering edge



DMF

Drill dia.:
ø0.236" - ø1.020"
(ø6 - ø25.9 mm)

180° flat edges for
counterboring and flat bottoms



DMH

Drill dia.:
ø0.236" - ø1.020"
(ø6 - ø25.9 mm)

General purpose head with
enhanced cutting edge



DMN

Drill dia.:
ø0.268" - ø0.768"
(ø6.8 - ø19.5 mm)
Drill head with sharp
edges for non-ferrous
materials



DMM

Drill dia.:
ø0.393" - ø0.657"
(ø10 - ø16.7 mm)
General purpose drilling
head for Stainless Steel
materials

DRILL BODIES LINEUP



TIDC

Drill dia.:
ø0.295" - ø0.783"
(ø7.5 - ø19.9 mm)
3xD and 5xD



TID-F

Drill dia.:
ø0.236" - ø1.020"
(ø6 - ø25.9 mm)
1.5xD, 3xD, 5xD, 8xD



TID-R / TID-R-E

Drill dia.:
ø0.236" - ø0.783"
(ø6 - ø19.9 mm)
2xD, 3.5xD, 6xD, 8xD

MODULAR DRILL BODIES LINEUP

video



TID-M

Drill dia.:
ø0.236" - ø0.744"
(ø6 - ø18.9 mm)
2xD and 3xD
TungFlex connection



TID-S

Drill dia.:
ø0.256" - ø0.429"
(ø6.5 - ø10.9 mm)
2xD
TungMeister connection

video



TID-L-A-M

Drill dia.:
ø0.256" - ø0.665"
(ø6.5 - ø16.9 mm)
TungFlex connection
Drilling+Chamfering /
pre-thread Drilling

INDEXABLE DRILL WITH ECONOMICAL 6 CUTTING EDGED INSERT

AH7020 and AH7030 insert grades developed specifically for drilling applications for prolonged insert tool life.

BUY 20 inserts

AND

GET 1 drill body at

**50 %
additional
discount!**
Promo Code: TG258

Inserts (Grades: AH7020, AH7030):

WWMU-DJ / -DS

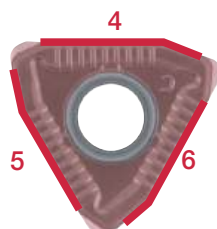
Drill bodies:

TDS-F (2xD, 3xD, 4xD)

Peripheral cutting edges



Center cutting edges



TDS-F
Drill dia.:
ø0.750" - ø2.000"
(ø20 - ø54 mm)
2xD, 3xD, 4xD

learn more



A WIDE RANGE OF INDEXABLE DRILLS FOR VARIOUS APPLICATIONS

AH7020 and AH7030 insert grades developed specifically for drilling applications for prolonged insert tool life.

BUY 20 inserts

AND

GET 1 drill body at

**50 %
additional
discount!**
Promo Code: TG257

Inserts (Grades: AH7020, AH7030):

XPMT-DJ / -DS / -DW

Drill bodies:

TDX-F (2xD, 3xD, 4xD, 5xD)



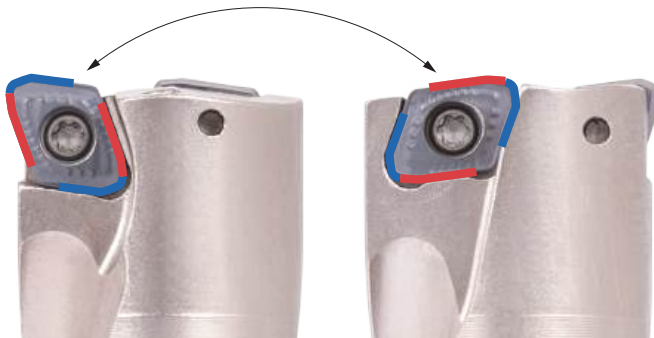
TDX-F

Drill dia.:

ø0.500" - ø2.125"

ø12.5 - ø54 mm

2xD, 3xD, 4xD, 5xD



One insert fits both center and peripheral edges,
reducing inventory and cost.

learn more



TMV chipbreaker wiper inserts

Valid from July 1st to December 15th, 2025

NTK

TURNING & MINIATURE

OUTSTANDING CHIPBREAKER FOR CONVENTIONAL AND VIBRATION MACHINING

TMV-wiper insert delivers superior surface finish even at high feed rates, contributing to longer tool life by enabling increased feed.

BUY 20 inserts

AND

GET 10 Corresponding inserts

FREE
of charge!
Promo Code: NW006

Inserts (Grades NTK650, ST4):
DCGT



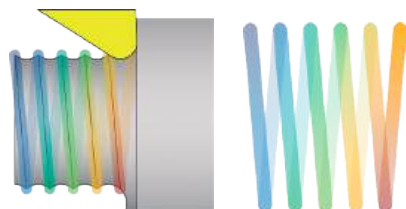
DCGT

Shape to prevent cutting edge damage from chipping

Rake face shape to withstand high cutting feeds

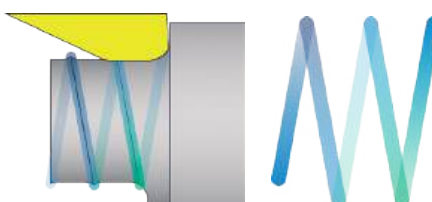
Controls chip flow reliably

Conventional Tool Path Length



Conventional feed: **0.00197 in/rev (0.05 mm/rev)**
Tool path length: **1,236" (31.4 m)**

TMV-WP Halves Your Tool-Path Length at High Feeds



TMV-WP feed: **0.00394 in/rev (0.10 mm/rev)**
Tool path length: **618" (15.7 m)**

Faster cycle times thanks to higher feed rates

Wiper geometry preserves a fine surface finish

Higher feed = shorter tool-path length = longer tool life

web



The Front Max

Valid from July 1st to December 15th, 2025

NTK

TURNING & MINIATURE

EFFICIENT SINGLE-PASS TURNING WITH DEPTHS OF CUT UP TO 0.196" (5.0 MM)

Achieve up to 0.196" (5.0 mm) depth of cut with TFX advanced insert geometry and coolant-through holders for superior chip control, surface finish, and stability.

BUY 20 inserts

AND

GET 1 Corresponding toolholder

FREE
of charge!

Promo Code: NW007

BUY 20 inserts

AND

GET 1 Corresponding coolant through toolholder

50 %
additional discount!

Promo Code: NW007

Inserts (Grades DM4, ST4):

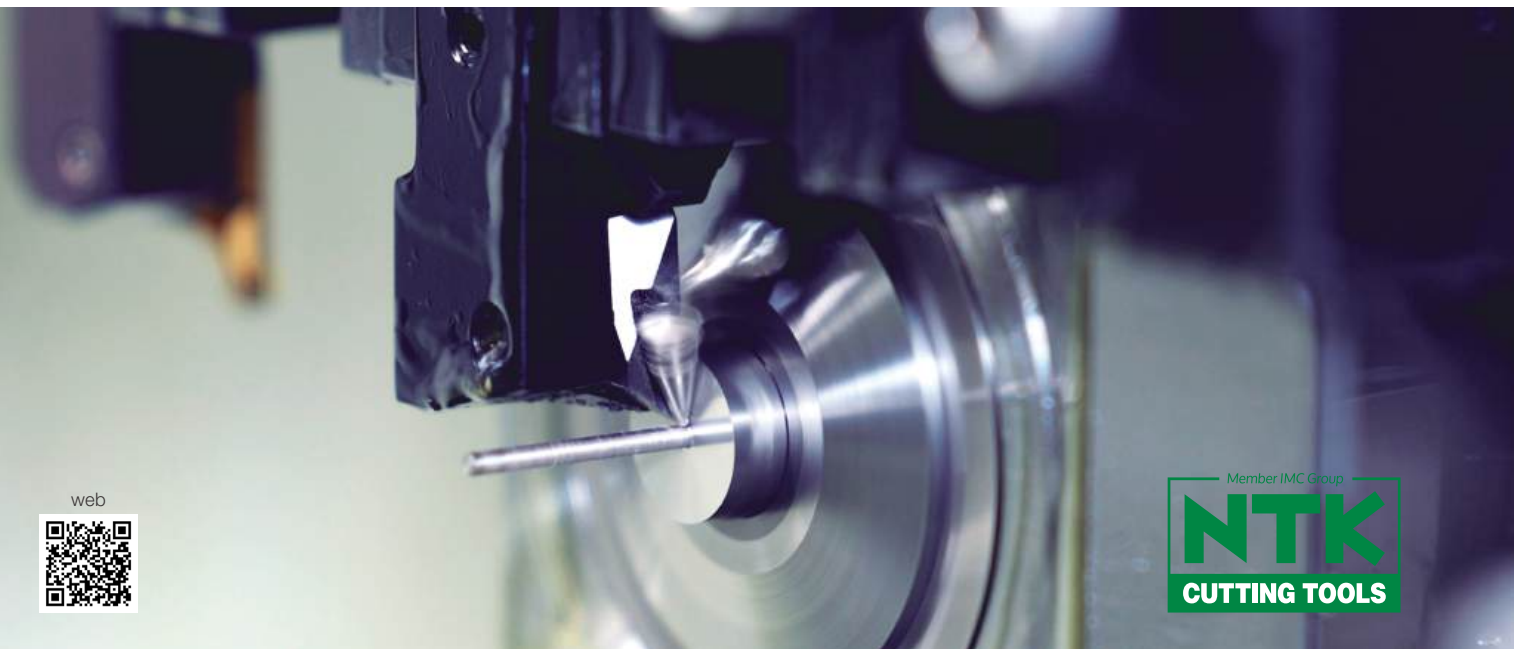
TFX

Toolholders:

TFT

TFT-OH2

TFTR-OH3



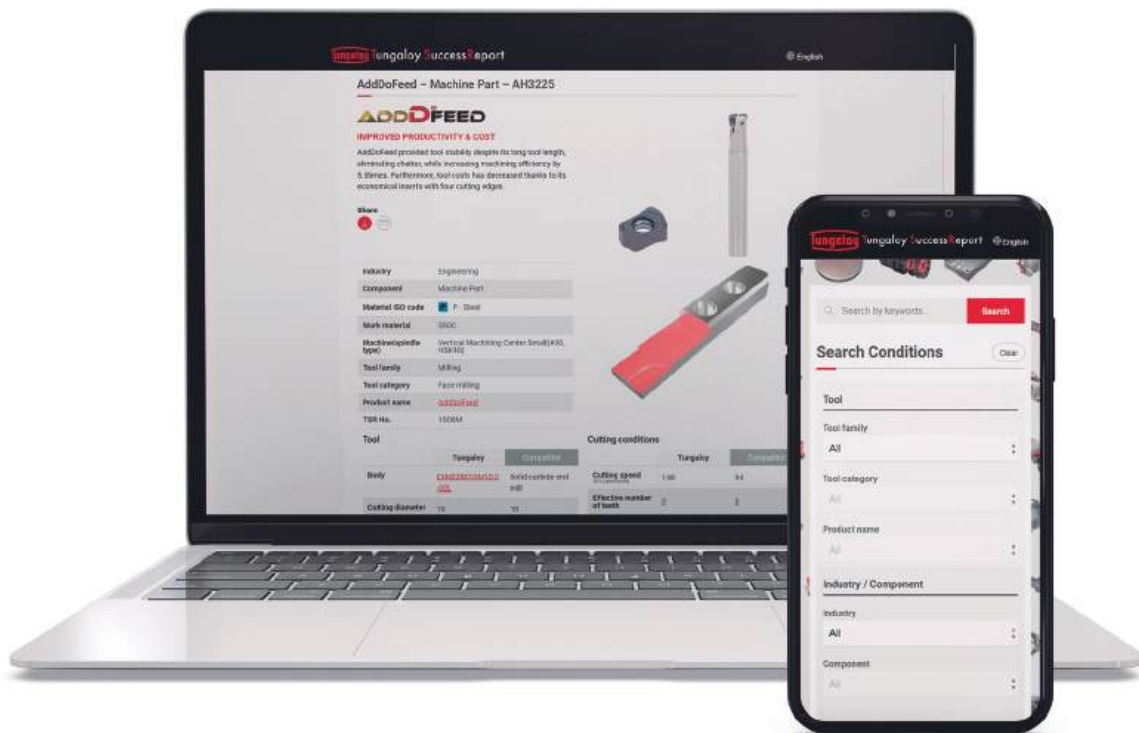
web



YOUR GATEWAY TO TUNGALOY & NTK SUCCESS REPORTS!

We invite you to visit the updated TSR platform and discover how Tungaloy and NTK's products have successfully met diverse challenges and delivered outstanding results. These reports can provide insights and inspiration for your own applications and projects, offering detailed solutions to succeed in various industrial fields.

Find applications that fit your current needs, elevate your productivity, and solve your production bottlenecks.



tsr.tungaloy.com

MEMO



Tungaloy-NTK America, Inc.
3726 N Ventura Drive,
Arlington Heights, IL 60004, U.S.A
tungaloy.com/us
ntkcuttingtools.com/us

Leading in Innovation

Distributed by:



**COMPLETE
METALWORKING
SOLUTIONS**

(800) 991-4225

www.ahbinc.com

ISO Certified

customerservice@ahbinc.com



FIND US ON THE CLOUD!
machiningcloud.com

Jun. 2025 (TA)